

Coronavirus Disease 2019 (COVID-19)

[Analysis of COVID-19 Cases in Montana as of 9/4/2020](#)

[Archive of COVID-19 Montana Analyses](#)



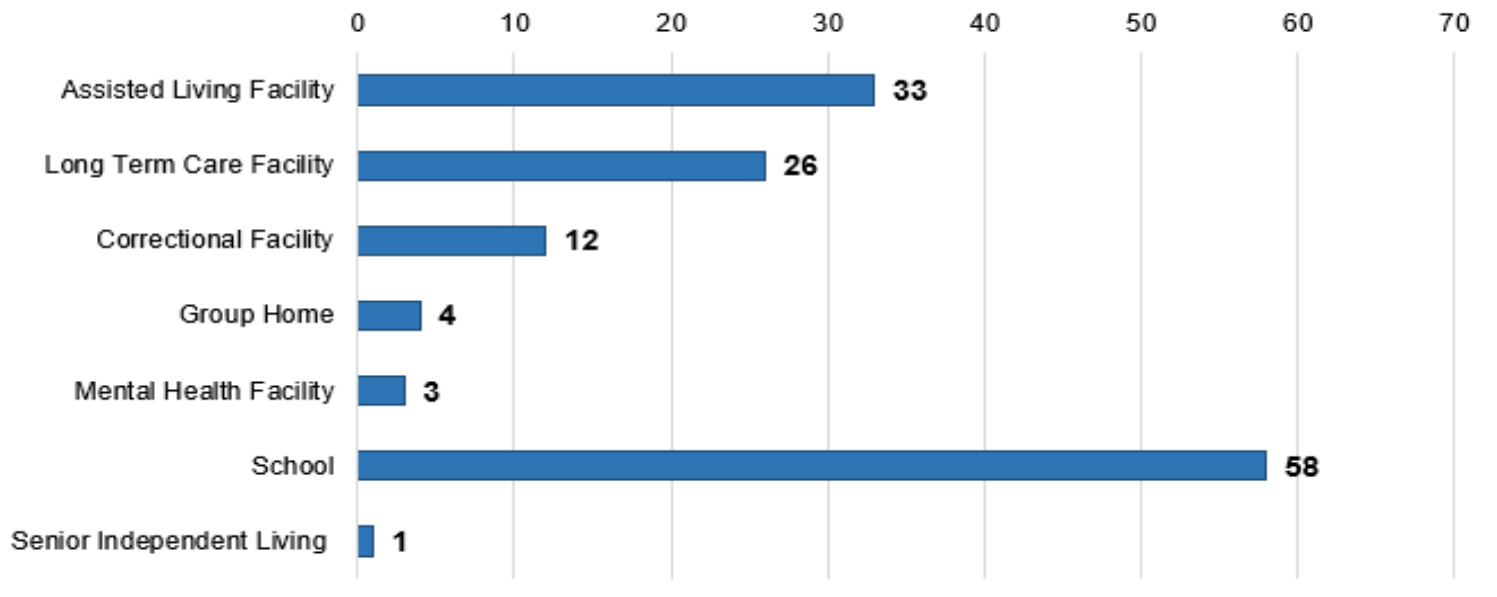
Demographic Information for Confirmed Cases

COVID-19 Cases in Montana	
Total Number of Cases	9871
- Number of Deaths	146

** Tables and charts are updated by 10 am every morning.*



Number of congregate settings with COVID-19 cases by type in Montana (n=137)



[Additional information on COVID-19 in Montana Long Term Care and Assisted Living Facilities](#)

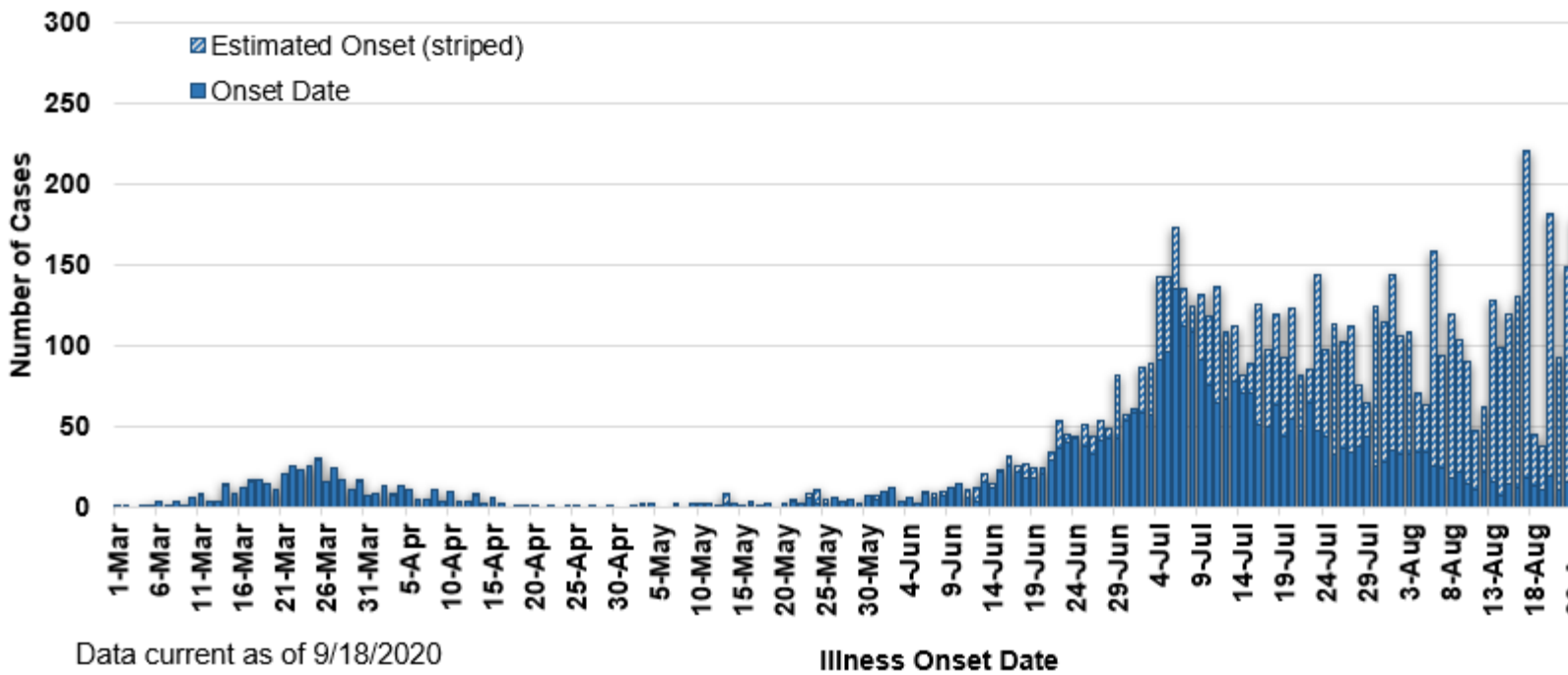
[Additional information on COVID-19 in Montana schools](#)

County of Residence	Number of Cases	Number of Deaths	Community Transmission*
Beaverhead	76	1	Yes
Big Horn	823	21	Yes
Blaine	16		
Broadwater	17		
Carbon	106		
Cascade	500	5	Yes
Chouteau	18		
Custer	92	2	
Daniels	3		
Dawson	67	1	
Deer Lodge	88		
Fallon	5		
Fergus	53	1	
Flathead	782	13	Yes
Gallatin	1185	4	Yes
Garfield	16		
Glacier	175	1	Yes
Golden Valley	3		
Granite	22		
Hill	129	3	
Jefferson	52		
Judith Basin	6		
Lake	254	1	
Lewis and Clark	221	3	Yes
Liberty	16		
Lincoln	104	3	
Madison	97	1	Yes
McCone	19		
Meagher	24	1	
Mineral	2		
Missoula	553	3	Yes

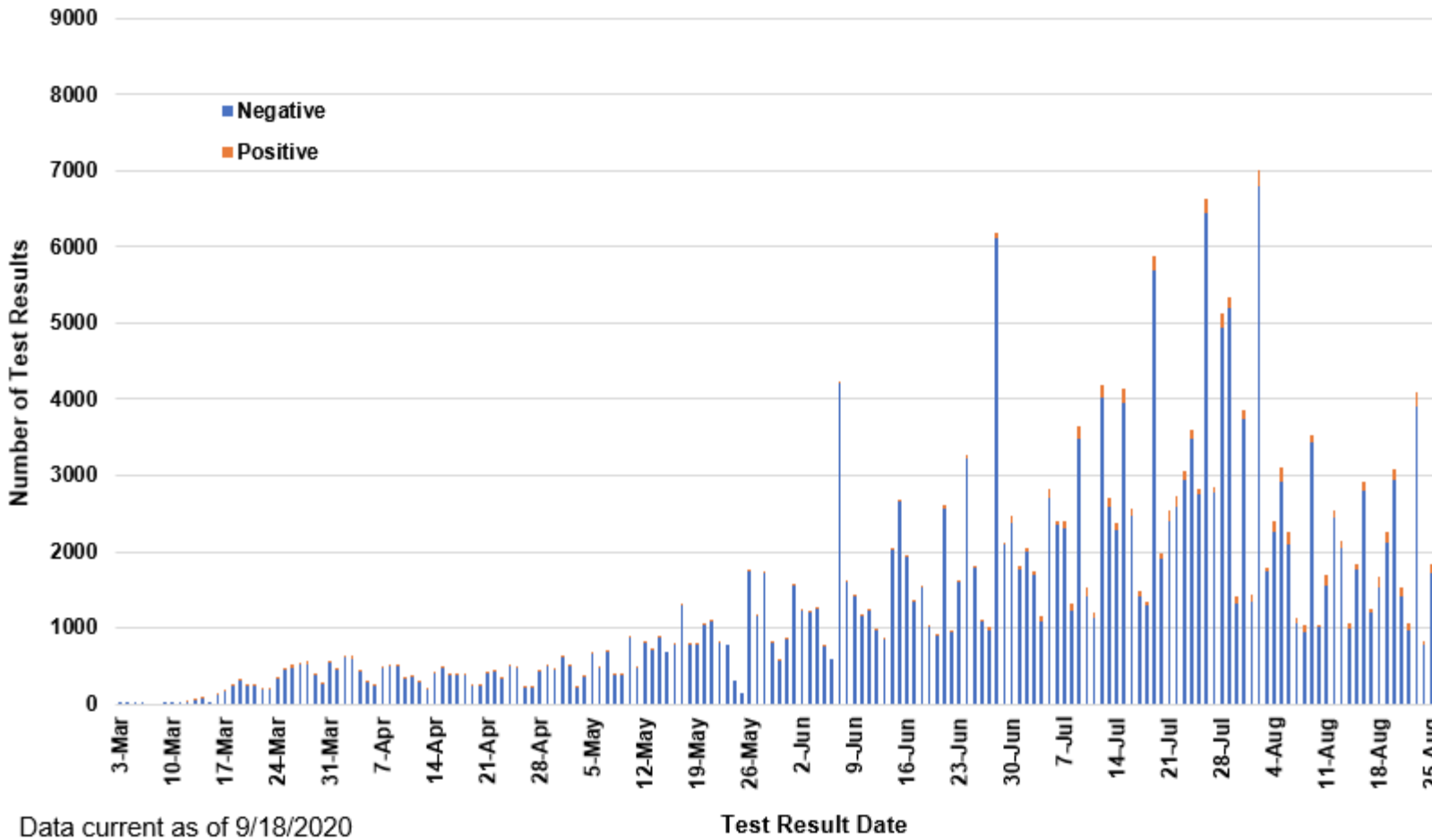
County of Residence	Number of Cases	Number of Deaths	Community Transmission*
Musselshell	32	1	
Park	86		
Phillips	117		
Pondera	20		
Powder River	3		
Powell	10		
Prairie	1		
Ravalli	122	2	Yes
Richland	71	2	
Roosevelt	126	1	
Rosebud	554	10	Yes
Sanders	44	1	
Sheridan	7		
Silver Bow	197		Yes
Stillwater	51	2	
Sweet Grass	37	1	
Teton	20		
Toole	69	6	
Treasure	3		
Valley	53		
Wheatland	8		
Wibaux	8		
Yellowstone	2708	56	Yes
Total	9871	146	

* Community transmission - a community has identified cases who are unable to be linked with other known cases or travel. This status has been determined after consultation between state and local health departments.

COVID-19 Cases in Montana by Date of Illness Onset, 2020 [N=9,871]



SARS-Cov-2 PCR Testing at Montana Public Health Laboratory and Reference Laboratories, Montana 2020 [n=298,555]



View your county's test positivity rate at the [Center for Medicare and Medicaid Services' \(CMS\) webpage](#).

Hospitalization Status	Number of Cases (percent of total)
Ever hospitalized	555 (6%)
Not Hospitalized	9316 (94%)
Total	9871

Age Group	Number of Cases (percent of total)
0-9 years	426 (4%)
10-19 years	1025 (10%)
20-29 years	2222 (22%)
30-39 years	1680 (17%)
40-49 years	1305 (13%)
50-59 years	1222 (13%)
60-69 years	1043 (10%)
70-79 years	603 (6%)
80-89 years	274 (3%)
90-99 years	68 (<1%)
100+	3 (<1%)
Total	9871

Sex	Number of Cases (percent of total)
Female	4940 (50%)
Male	4931 (50%)
Total	9871

Race and Ethnicity	Number of Cases (percent of total)
White	5223 (53%)
American Indian, Alaska Native, Native Hawaiian, and Pacific Islander	1706 (17%)
Asian	34 (<1%)
Black or African American	66 (<1%)
Other Race	96 (1%)
Undetermined/Under investigation	2746 (28%)
Total	9871
Among those with ethnicity specified:	
Hispanic/Latino	363 (4%)
Not Hispanic/Latino	6489 (67%)
Undetermined/Under investigation	3019 (30%)
Total	9871

Current Status of Cases	Number of Cases (percent of total)
Hospitalized	105 (1.1%)
Deceased	146 (1.5%)
Recovering	2120 (21%)
Recovered and released from isolation	7500 (76%)
Total number of cases	9871

Location (at time of testing) of individuals diagnosed but not residing or counted in Montana:

County	Number of Cases (percent of total)
Beaverhead	3 (1%)
Big Horn	1 (<1%)
Carbon	3 (1%)
Cascade	20 (9%)
Custer	4 (2%)
Dawson	2 (1%)
Deer Lodge	1 (<1%)
Fallon	1 (<1%)
Fergus	2 (1%)
Flathead	46 (19%)
Gallatin	49 (20%)
Glacier	1 (<1%)
Granite	1 (<1%)
Lake	10 (4%)
Lewis and Clark	5 (2%)
Lincoln	3 (1%)
Madison	25 (11%)
Meagher	1 (<1%)
Missoula	14 (5%)
Park	10 (3%)
Powell	1 (<1%)
Ravalli	8 (3%)
Silver Bow	5 (2%)
Stillwater	2 (1%)
Sweet Grass	3 (1%)
Toole	2 (1%)
Yellowstone	20 (9%)
Total	243

Cases reported in the tables above include 13 residents of other states who were tested, isolated and/or hospitalized in Montana during the early phases of the pandemic. As COVID-19 is now widespread across the United States, data no longer include out-of-state residents who test positive in Montana in order to align with Council of State and Territorial Epidemiologists guidelines that classify cases by the individual's usual state of residence. This is standard practice for all communicable diseases to ensure accurate case reporting for Montana and the US. Additional individuals were diagnosed in

Montana but are not included due to residency and/or the transient nature of their visit to the state: data for these individuals are reflected in the table immediately above.