

### Coronavirus Disease 2019 (COVID-19)

#### [Analysis of COVID-19 Cases in Montana as of 9/4/2020](#)

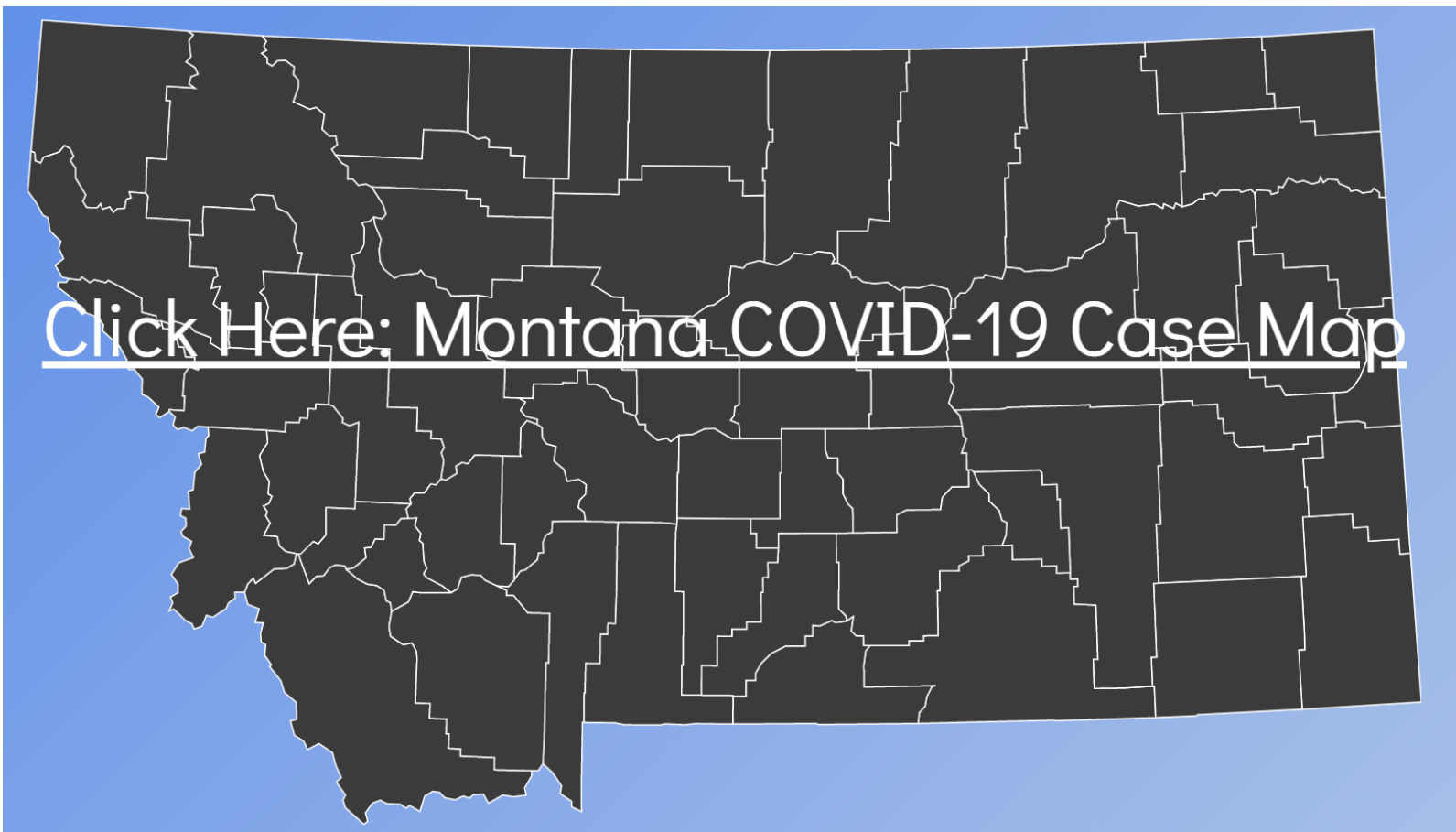
#### [Archive of COVID-19 Montana Analyses](#)



#### Demographic Information for Confirmed Cases

COVID-19 Cases in Montana	
Total Number of Cases	10,163
- Number of Deaths	156

*\* Tables and charts are updated by 10 am every morning.*



## Number of congregate settings with COVID-19 cases by type in Montana (n=137)



[Additional information on COVID-19 in Montana Long Term Care and Assisted Living Facilities](#)

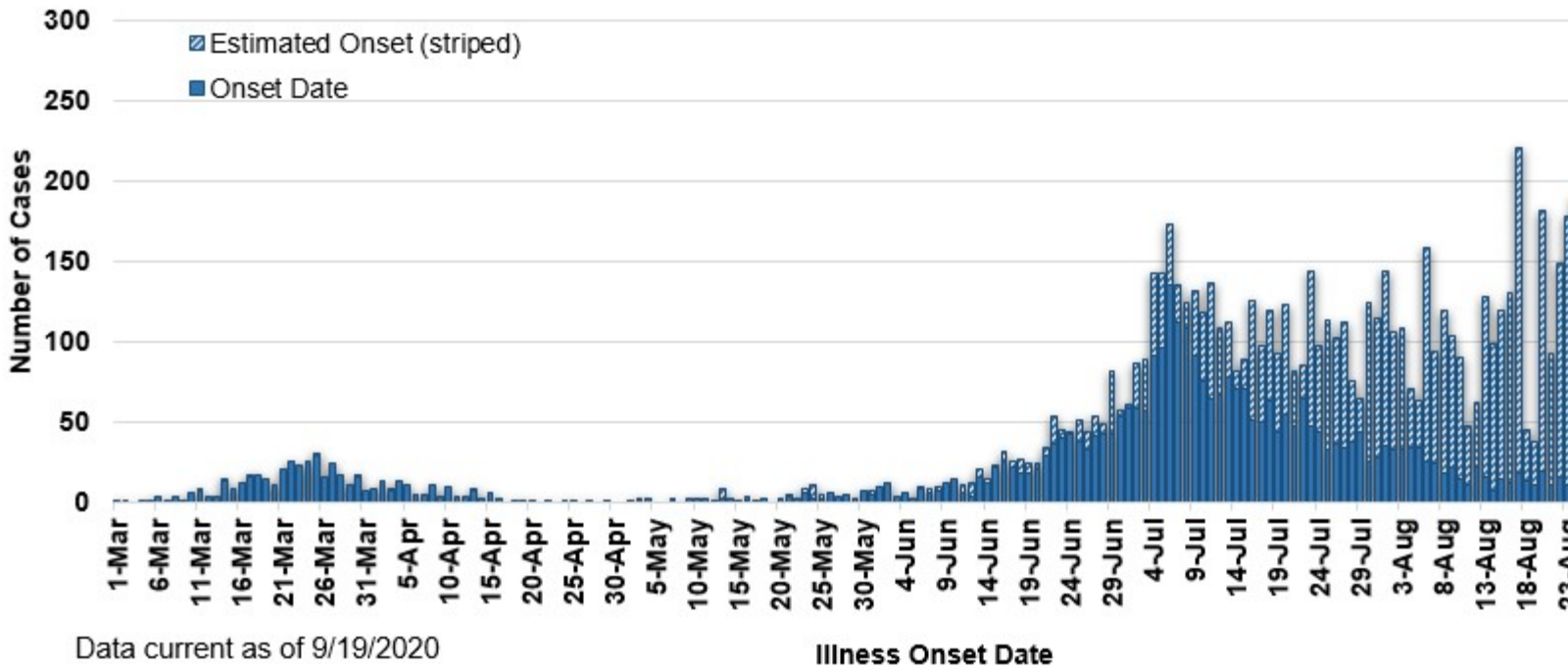
[Additional information on COVID-19 in Montana schools](#)

County of Residence	Number of Cases	Number of Deaths	Community Transmission*
Beaverhead	76	1	Yes
Big Horn	832	21	Yes
Blaine	16		
Broadwater	17		
Carbon	107		
Cascade	522	5	Yes
Chouteau	18		
Custer	101	2	
Daniels	3		
Dawson	67	1	
Deer Lodge	113		
Fallon	5		
Fergus	54	1	
Flathead	826	16	Yes
Gallatin	1200	4	Yes
Garfield	16		
Glacier	176	1	Yes
Golden Valley	3		
Granite	22		
Hill	131	3	
Jefferson	55		
Judith Basin	6		
Lake	251	1	
Lewis and Clark	222	3	Yes
Liberty	16		
Lincoln	105	3	
Madison	97	1	Yes
McCone	19		
Meagher	24	1	
Mineral	2		
Missoula	571	3	Yes

County of Residence	Number of Cases	Number of Deaths	Community Transmission*
Musselshell	32	1	
Park	86		
Phillips	117		
Pondera	21		
Powder River	3		
Powell	10		
Prairie	1		
Ravalli	126	2	Yes
Richland	73	2	
Roosevelt	147	1	
Rosebud	558	17	Yes
Sanders	44	1	
Sheridan	9		
Silver Bow	209		Yes
Stillwater	51	2	
Sweet Grass	37	1	
Teton	20		
Toole	70	6	
Treasure	3		
Valley	58		
Wheatland	9		
Wibaux	9		
Yellowstone	2797	56	Yes
Total	10,163	156	

\* Community transmission - a community has identified cases who are unable to be linked with other known cases or travel. This status has been determined after consultation between state and local health departments.

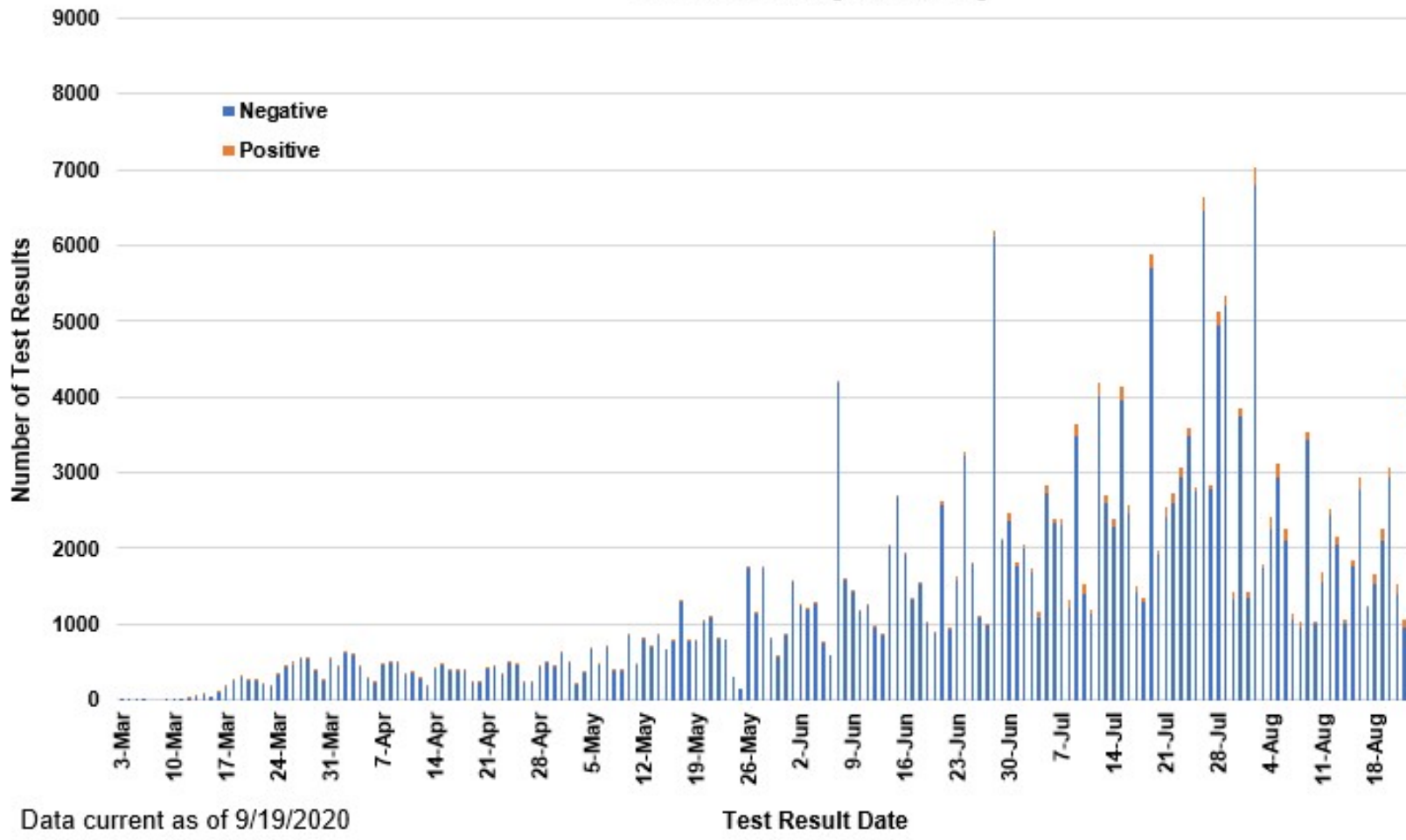
**COVID-19 Cases in Montana by Date of Illness Onset, 2020 [N=10,163]**



Data current as of 9/19/2020

Illness Onset Date

# SARS-Cov-2 PCR Testing at Montana Public Health Laboratory and Reference Laboratories Montana 2020 [n=300,840]



View your county's test positivity rate at the [Center for Medicare and Medicaid Services' \(CMS\) webpage](#).

Hospitalization Status	Number of Cases (percent of total)
Ever hospitalized	567 (6%)
Not Hospitalized	9596 (94%)
Total	10,163

Age Group	Number of Cases (percent of total)
0-9 years	435 (4%)
10-19 years	1068 (11%)
20-29 years	2296 (23%)
30-39 years	1763 (17%)
40-49 years	1336 (13%)
50-59 years	1255 (12%)
60-69 years	1062 (10%)
70-79 years	619 (6%)
80-89 years	284 (3%)
90-99 years	69 (<1%)
100+	3 (<1%)
Total	10,163

Sex	Number of Cases (percent of total)
Female	5095 (50%)
Male	5068 (50%)
Total	10,163

Race and Ethnicity	Number of Cases (percent of total)
White	5285 (52%)
American Indian, Alaska Native, Native Hawaiian, and Pacific Islander	1739 (17%)
Asian	35 (<1%)
Black or African American	69 (<1%)
Other Race	96 (1%)
Undetermined/Under investigation	2939 (29%)
Total	10,163
<b>Among those with ethnicity specified:</b>	
Hispanic/Latino	363 (4%)
Not Hispanic/Latino	6546 (64%)
Undetermined/Under investigation	3254 (32%)
Total	10,163

Current Status of Cases	Number of Cases (percent of total)
Hospitalized	104 (1.0%)
Deceased	156 (1.5%)
Recovering	2350 (23%)
Recovered and released from isolation	7553 (74%)
Total number of cases	10,163

**Location (at time of testing) of individuals diagnosed but not residing or counted in Montana:**

County	Number of Cases (percent of total)
Beaverhead	3 (1%)
Big Horn	1 (<1%)
Carbon	3 (1%)
Cascade	20 (9%)
Custer	4 (2%)
Dawson	2 (1%)
Deer Lodge	1 (<1%)
Fallon	1 (<1%)
Fergus	2 (1%)
Flathead	46 (19%)
Gallatin	49 (20%)
Glacier	1 (<1%)
Granite	1 (<1%)
Lake	10 (4%)
Lewis and Clark	6 (2%)
Lincoln	3 (1%)
Madison	26 (11%)
Meagher	1 (<1%)
Missoula	14 (5%)
Park	10 (3%)
Powell	1 (<1%)
Ravalli	8 (3%)
Silver Bow	5 (2%)
Stillwater	2 (1%)
Sweet Grass	3 (1%)
Toole	2 (1%)
Yellowstone	20 (9%)
Total	245

*Cases reported in the tables above include 13 residents of other states who were tested, isolated and/or hospitalized in Montana during the early phases of the pandemic. As COVID-19 is now widespread across the United States, data no longer include out-of-state residents who test positive in Montana in order to align with Council of State and Territorial Epidemiologists guidelines that classify cases by the individual's usual state of residence. This is standard practice for all communicable diseases to ensure accurate case reporting for Montana and the US. Additional individuals were diagnosed in*

*Montana but are not included due to residency and/or the transient nature of their visit to the state: data for these individuals are reflected in the table immediately above.*