

Sheila Hogan, Director

Children/Families

Disabilities

Seniors

Health

[Home](#) » [Public Health & Safety](#) » [Communicable Disease Epidemiology](#) » [Diseases A to Z](#) » [Coronavirus](#) » [Demographics](#)

Coronavirus Disease 2019 (COVID-19)

[Analysis of COVID-19 Cases in Montana as of 9/4/2020](#)

[Archive of COVID-19 Montana Analyses](#)



Demographic Information for Confirmed Cases

COVID-19 Cases in Montana	
Total Number of Cases	10,299
- Number of Deaths	157

** Tables and charts are updated by 10 am every morning.*



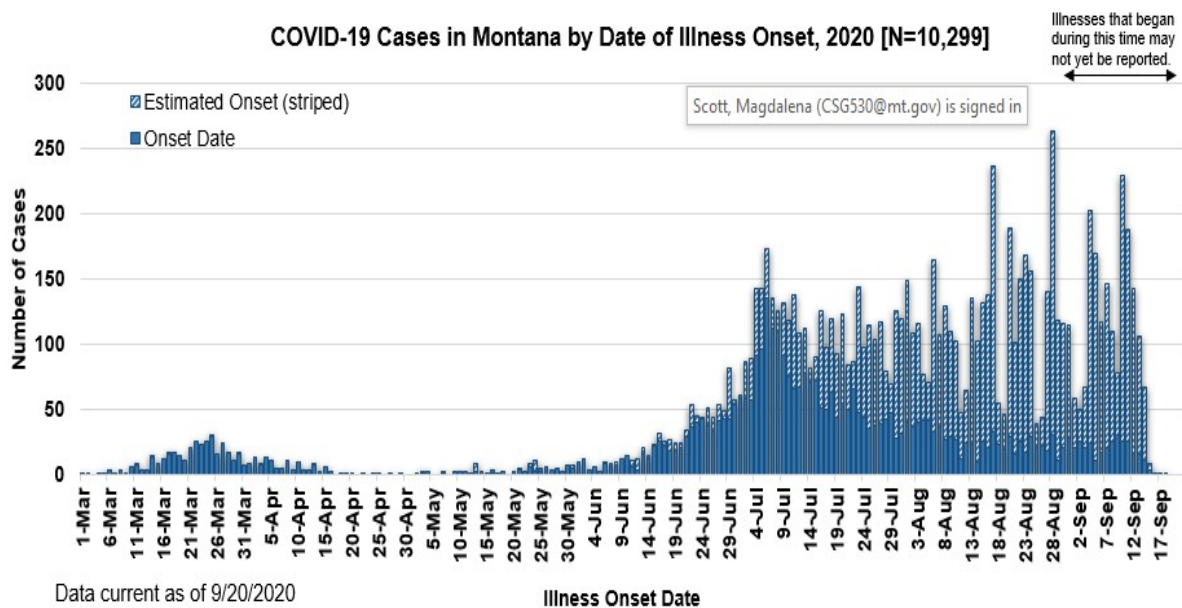
[Additional information on COVID-19 in Montana Long Term Care and Assisted Living Facilities](#)

[Additional information on COVID-19 in Montana schools](#)

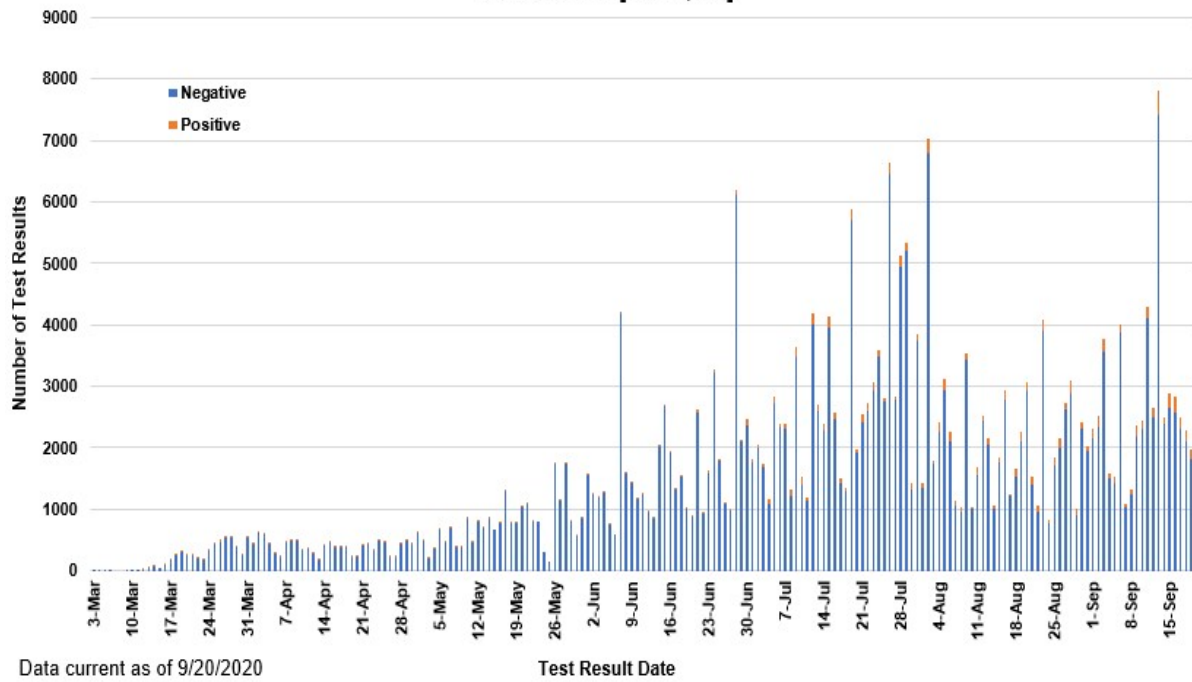
County of Residence	Number of Cases	Number of Deaths	Community Transmission*
Beaverhead	76	1	Yes
Big Horn	832	21	Yes
Blaine	16		
Broadwater	17		
Carbon	107		
Cascade	526	5	Yes
Chouteau	18		
Custer	102	2	
Daniels	3		
Dawson	67	1	
Deer Lodge	113		
Fallon	5		
Fergus	55	1	
Flathead	863	16	Yes
Gallatin	1204	4	Yes
Garfield	16		
Glacier	182	1	Yes
Golden Valley	3		
Granite	22		
Hill	131	3	
Jefferson	55		
Judith Basin	6		
Lake	251	1	
Lewis and Clark	223	3	Yes
Liberty	16		
Lincoln	105	3	
Madison	97	1	Yes
McCone	19		
Meagher	25	1	
Mineral	2		
Missoula	571	3	Yes
Musselshell	33	1	
Park	88		
Phillips	117		
Pondera	21		
Powder River	3		
Powell	10		

County of Residence	Number of Cases	Number of Deaths	Community Transmission*
Prairie	1		
Ravalli	126	2	Yes
Richland	73	2	
Roosevelt	151	1	
Rosebud	584	17	Yes
Sanders	45	1	
Sheridan	9		
Silver Bow	210		Yes
Stillwater	51	2	
Sweet Grass	37	1	
Teton	20		
Toole	70	6	
Treasure	3		
Valley	60		
Wheatland	9		
Wibaux	9		
Yellowstone	2841	57	Yes
Total	10,299	157	

* Community transmission - a community has identified cases who are unable to be linked with other known cases or travel. This status has been determined after consultation between state and local health departments.



**SARS-Cov-2 PCR Testing at Montana Public Health Laboratory and Reference Laboratories,
Montana 2020 [n=302,813]**



View your county's test positivity rate at the [Center for Medicare and Medicaid Services' \(CMS\) webpage](#).

Hospitalization Status	Number of Cases (percent of total)
Ever hospitalized	570 (6%)
Not Hospitalized	9729 (94%)
Total	10,299

Age Group	Number of Cases (percent of total)
0-9 years	442 (4%)
10-19 years	1080 (11%)
20-29 years	2324 (23%)
30-39 years	1766 (17%)
40-49 years	1358 (13%)
50-59 years	1266 (12%)
60-69 years	1081 (10%)
70-79 years	621 (6%)

Age Group	Number of Cases (percent of total)
80-89 years	289 (3%)
90-99 years	69 (<1%)
100+	3 (<1%)
Total	10,299

Sex	Number of Cases (percent of total)
Female	5158 (50%)
Male	5141 (50%)
Total	10,299

Race and Ethnicity	Number of Cases (percent of total)
White	5306 (52%)
American Indian, Alaska Native, Native Hawaiian, and Pacific Islander	1772 (17%)
Asian	35 (<1%)
Black or African American	69 (<1%)
Other Race	96 (1%)
Undetermined/Under investigation	3021 (29%)
Total	10,299
Among those with ethnicity specified:	
Hispanic/Latino	364 (4%)
Not Hispanic/Latino	6601 (64%)
Undetermined/Under investigation	3334 (32%)
Total	10,299

Current Status of Cases	Number of Cases (percent of total)
Hospitalized	104 (1.0%)
Deceased	157 (1.5%)
Recovering	2231 (22%)
Recovered and released from isolation	7807 (76%)
Total number of cases	10,299

Location (at time of testing) of individuals diagnosed but not residing or counted in

Montana:

County	Number of Cases (percent of total)
Beaverhead	3 (1%)
Big Horn	1 (<1%)
Carbon	3 (1%)
Cascade	20 (9%)
Custer	4 (2%)
Dawson	2 (1%)
Deer Lodge	1 (<1%)
Fallon	1 (<1%)
Fergus	2 (1%)
Flathead	46 (19%)
Gallatin	49 (20%)
Glacier	1 (<1%)
Granite	1 (<1%)
Lake	10 (4%)
Lewis and Clark	6 (2%)
Lincoln	3 (1%)
Madison	26 (11%)
Meagher	1 (<1%)
Missoula	14 (5%)
Park	10 (3%)
Powell	1 (<1%)
Ravalli	8 (3%)
Silver Bow	5 (2%)
Stillwater	2 (1%)
Sweet Grass	3 (1%)
Toole	2 (1%)
Yellowstone	20 (9%)
Total	245

*Cases reported in the tables above include **13** residents of other states who were tested, isolated and/or hospitalized in Montana during the early phases of the pandemic. As COVID-19 is now widespread across the United States, data no longer include out-of-state residents who test positive in Montana in order to align with Council of State and Territorial Epidemiologists guidelines that classify cases by the individual's usual state of residence. This is standard practice for all communicable diseases to ensure accurate case reporting for Montana and the US. Additional individuals were diagnosed in Montana but are not included due to residency and/or the transient nature of their visit to the state: data for these individuals are reflected in the table immediately above.*

Communicable Disease Epidemiology Staff Listing



To submit a question or comment to the Communicable Disease Epidemiology Program, please click on the suggestion box to access our online form.

 [Diseases A-Z](#)

 [Disease Reporting](#)

 [Data and Reports](#)

 [Contact Us](#)

Other Program Areas

 [Tuberculosis \(TB\)](#)

 [Healthcare Associated Infections \(HAI\)](#)

 [Sexually Transmitted Diseases \(HIV/STD\)](#)

 [Antimicrobial Resistance](#)

 [Follow DPHHS](#)

The DPHHS CDEpi Section mission is to create, maintain, support, and strengthen routine surveillance and detection systems and epidemiological investigation processes, as well as to expand these systems and processes in response to incidents of public health significance.

[Nondiscrimination Notice/Policy](#)

[Notice of Use of Protected Health Information](#)

[Disclaimer](#)

[Contact Webmaster](#)

[Language Assistance Available](#)

[Español](#) | [Deutsch](#) | [繁體中文](#) | [日本語](#) | [Tagalog](#) | [Français](#) | [Русский](#) | [한국어](#) | [العربية](#) | [ไทย](#) | [Norsk](#) | [Tiếng Việt](#) | [український](#) | [Pennsilfaanisch Deutsch](#) | [Italiano](#)