

Coronavirus Disease 2019 (COVID-19)

[Analysis of COVID-19 Cases in Montana as of 9/4/2020](#)

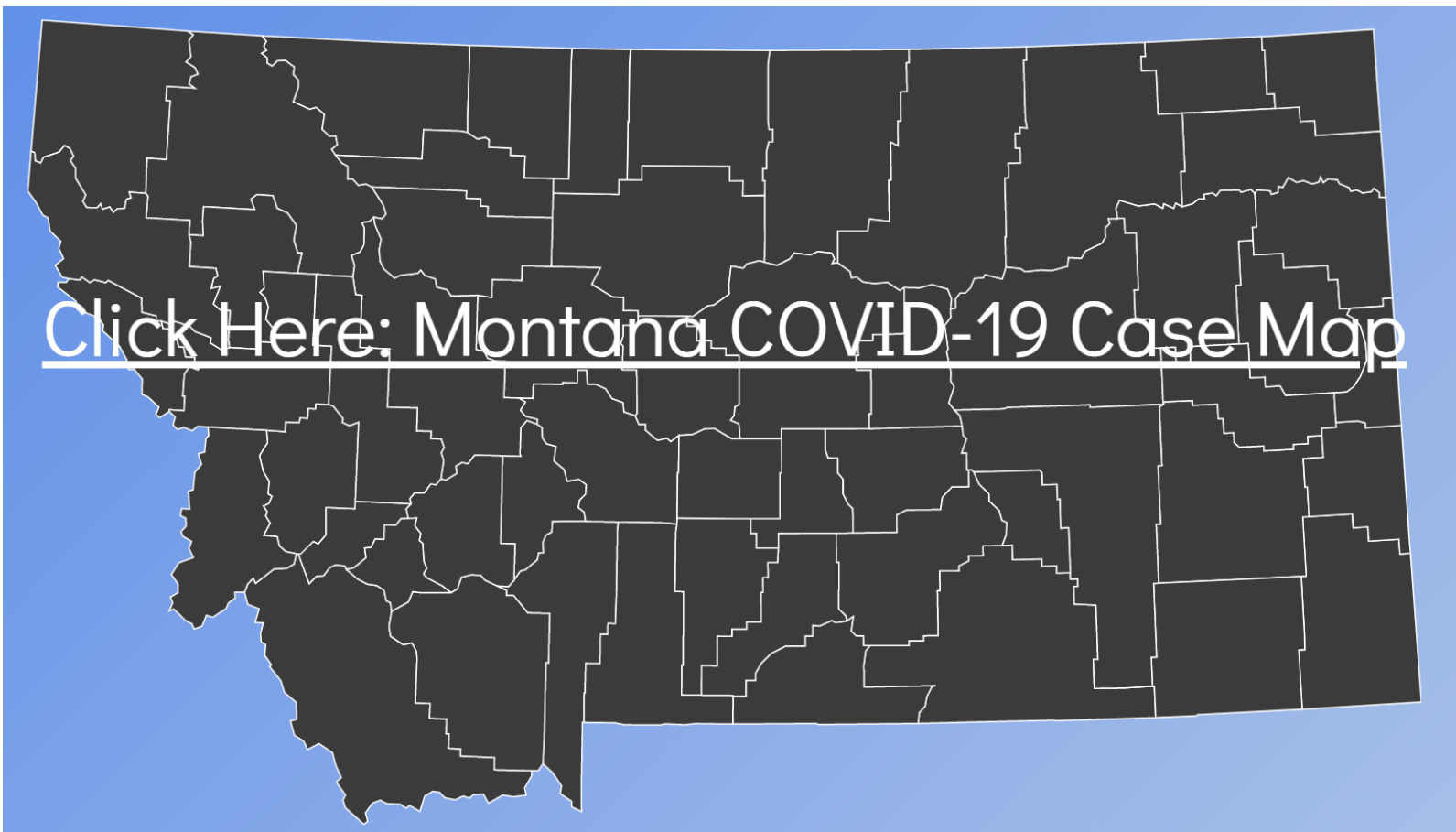
[Archive of COVID-19 Montana Analyses](#)



Demographic Information for Confirmed Cases

COVID-19 Cases in Montana	
Total Number of Cases	10,429
- Number of Deaths	160

** Tables and charts are updated by 10 am every morning.*



Number of congregate settings with COVID-19 cases by type in Montana (n=137)



[Additional information on COVID-19 in Montana Long Term Care and Assisted Living Facilities](#)

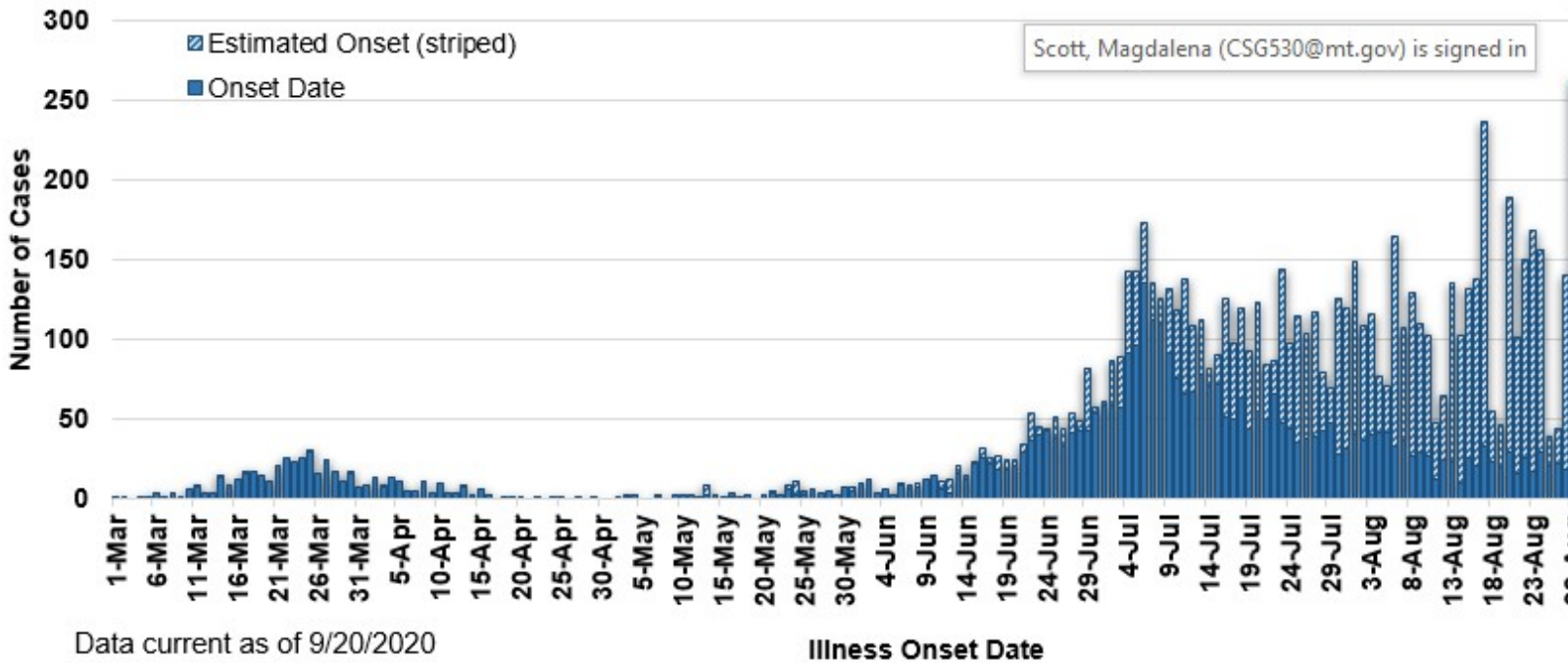
[Additional information on COVID-19 in Montana schools](#)

County of Residence	Number of Cases	Number of Deaths	Community Transmission*
Beaverhead	77	1	Yes
Big Horn	832	21	Yes
Blaine	16		
Broadwater	17		
Carbon	111		
Cascade	544	5	Yes
Chouteau	18		
Custer	103	2	
Daniels	4		
Dawson	70	1	
Deer Lodge	113		
Fallon	5		
Fergus	56	1	
Flathead	865	16	Yes
Gallatin	1207	4	Yes
Garfield	16		
Glacier	198	1	Yes
Golden Valley	3		
Granite	22		
Hill	134	3	
Jefferson	55		
Judith Basin	6		
Lake	254	1	
Lewis and Clark	226	3	Yes
Liberty	16		
Lincoln	105	3	
Madison	97	1	Yes
McCone	19		
Meagher	25	2	
Mineral	2		
Missoula	581	3	Yes

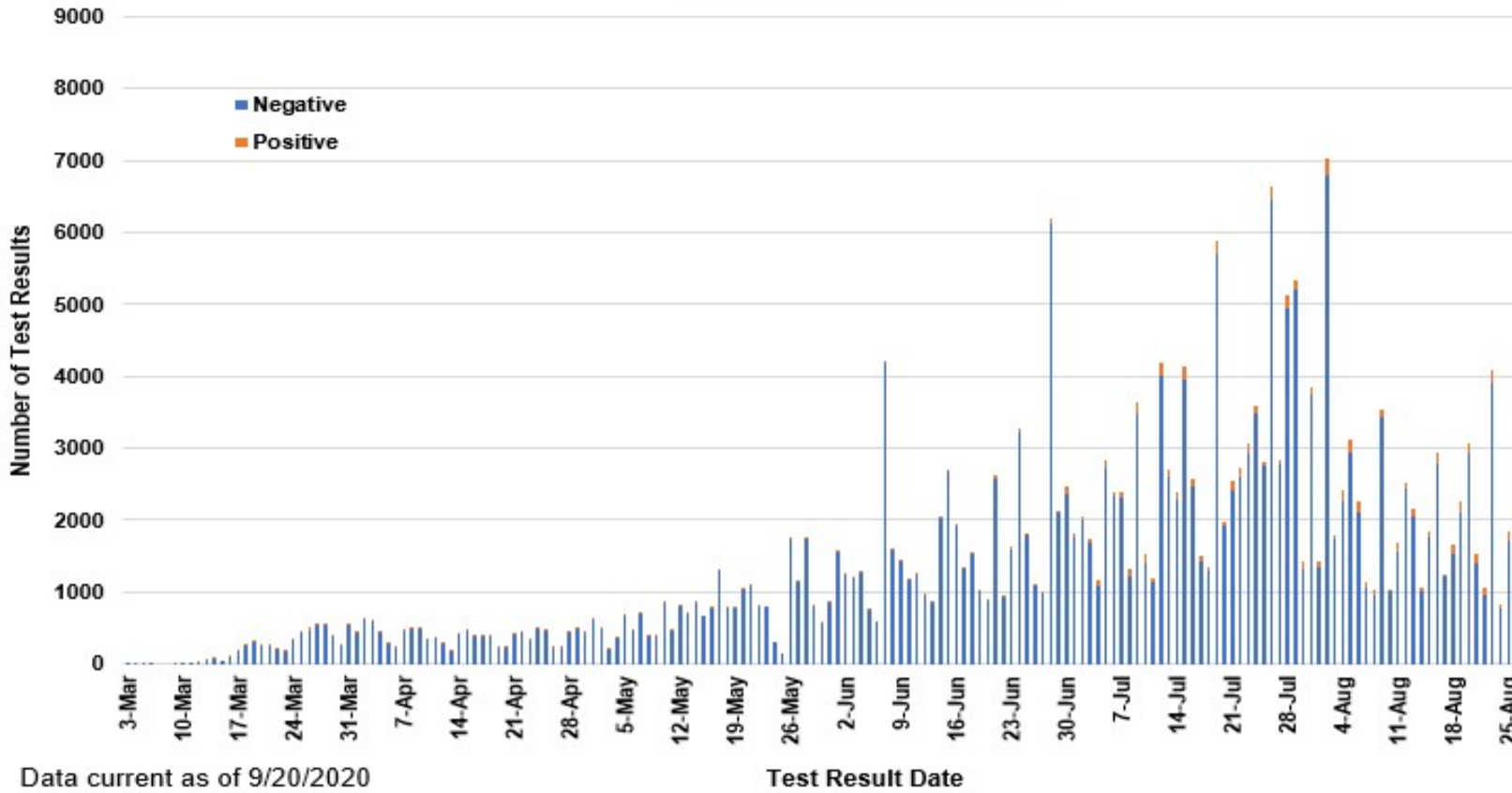
County of Residence	Number of Cases	Number of Deaths	Community Transmission*
Musselshell	35	1	
Park	88		
Phillips	117		
Pondera	21		
Powder River	3		
Powell	10		
Prairie	1		
Ravalli	126	2	Yes
Richland	74	2	
Roosevelt	168	1	
Rosebud	592	17	Yes
Sanders	45	1	
Sheridan	12		
Silver Bow	217		Yes
Stillwater	51	2	
Sweet Grass	37	1	
Teton	20		
Toole	71	6	
Treasure	3		
Valley	60		
Wheatland	9		
Wibaux	9		
Yellowstone	2863	59	Yes
Total	10,429	160	

* Community transmission - a community has identified cases who are unable to be linked with other known cases or travel. This status has been determined after consultation between state and local health departments.

COVID-19 Cases in Montana by Date of Illness Onset, 2020 [N=10,299]



**SARS-Cov-2 PCR Testing at Montana Public Health Laboratory and Reference Laboratories
Montana 2020 [n=302,813]**



View your county's test positivity rate at the [Center for Medicare and Medicaid Services' \(CMS\) webpage](#).

Hospitalization Status	Number of Cases (percent of total)
Ever hospitalized	576 (6%)
Not Hospitalized	9853 (94%)
Total	10,429

Age Group	Number of Cases (percent of total)
0-9 years	450 (4%)
10-19 years	1103 (11%)
20-29 years	2353 (23%)
30-39 years	1786 (17%)
40-49 years	1371 (13%)
50-59 years	1279 (12%)
60-69 years	1093 (10%)
70-79 years	627 (6%)
80-89 years	295 (3%)
90-99 years	69 (<1%)
100+	3 (<1%)
Total	10,429

Sex	Number of Cases (percent of total)
Female	5226 (50%)
Male	5203 (50%)
Total	10,429

Race and Ethnicity	Number of Cases (percent of total)
White	5310 (52%)
American Indian, Alaska Native, Native Hawaiian, and Pacific Islander	1772 (17%)
Asian	35 (<1%)
Black or African American	69 (<1%)
Other Race	96 (1%)
Undetermined/Under investigation	3103 (29%)
Total	10,429
Among those with ethnicity specified:	
Hispanic/Latino	364 (4%)
Not Hispanic/Latino	6605 (64%)
Undetermined/Under investigation	3460 (32%)
Total	10,429

Current Status of Cases	Number of Cases (percent of total)
Hospitalized	108 (1.0%)
Deceased	160 (1.5%)
Recovering	2285 (22%)
Recovered and released from isolation	7876 (76%)
Total number of cases	10,429

Location (at time of testing) of individuals diagnosed but not residing or counted in Montana:

County	Number of Cases (percent of total)
Beaverhead	3 (1%)
Big Horn	1 (<1%)
Carbon	3 (1%)
Cascade	20 (9%)
Custer	4 (2%)
Dawson	2 (1%)
Deer Lodge	1 (<1%)
Fallon	1 (<1%)
Fergus	2 (1%)
Flathead	46 (19%)
Gallatin	49 (20%)
Glacier	1 (<1%)
Granite	1 (<1%)
Lake	10 (4%)
Lewis and Clark	6 (2%)
Lincoln	3 (1%)
Madison	26 (11%)
Meagher	1 (<1%)
Missoula	14 (5%)
Park	10 (3%)
Powell	1 (<1%)
Ravalli	8 (3%)
Silver Bow	5 (2%)
Stillwater	2 (1%)
Sweet Grass	3 (1%)
Toole	2 (1%)
Yellowstone	20 (9%)
Total	245

Cases reported in the tables above include 13 residents of other states who were tested, isolated and/or hospitalized in Montana during the early phases of the pandemic. As COVID-19 is now widespread across the United States, data no longer include out-of-state residents who test positive in Montana in order to align with Council of State and Territorial Epidemiologists guidelines that classify cases by the individual's usual state of residence. This is standard practice for all communicable diseases to ensure accurate case reporting for Montana and the US. Additional individuals were diagnosed in Montana but are not included due to residency and/or the transient nature of their visit to the state: data for these individuals are reflected in the table immediately above.