

Sheila Hogan, Director

Children/Families

Disabilities

Seniors

Health

[Home](#) » [Public Health & Safety](#) » [Communicable Disease Epidemiology](#) » [Diseases A to Z](#) » [Coronavirus](#) » [Demographics](#)

Coronavirus Disease 2019 (COVID-19)

[Analysis of COVID-19 Cases in Montana as of 9/18/2020](#)

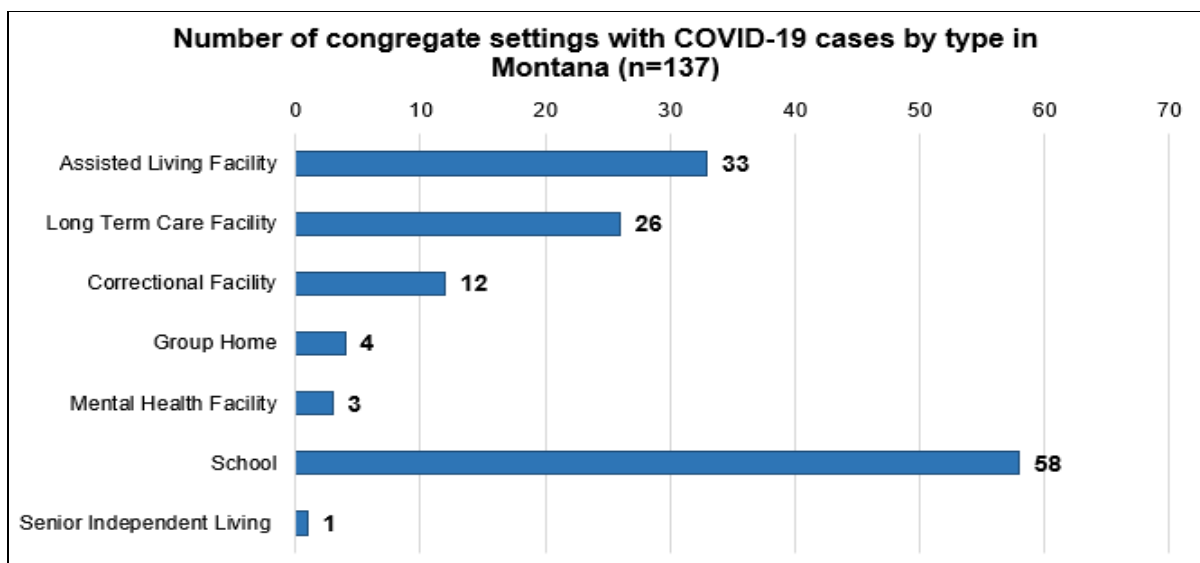
[Archive of COVID-19 Montana Analyses](#)



Demographic Information for Confirmed Cases

COVID-19 Cases in Montana	
Total Number of Cases	10,700
- Number of Deaths	163

** Tables and charts are updated by 10 am every morning.*



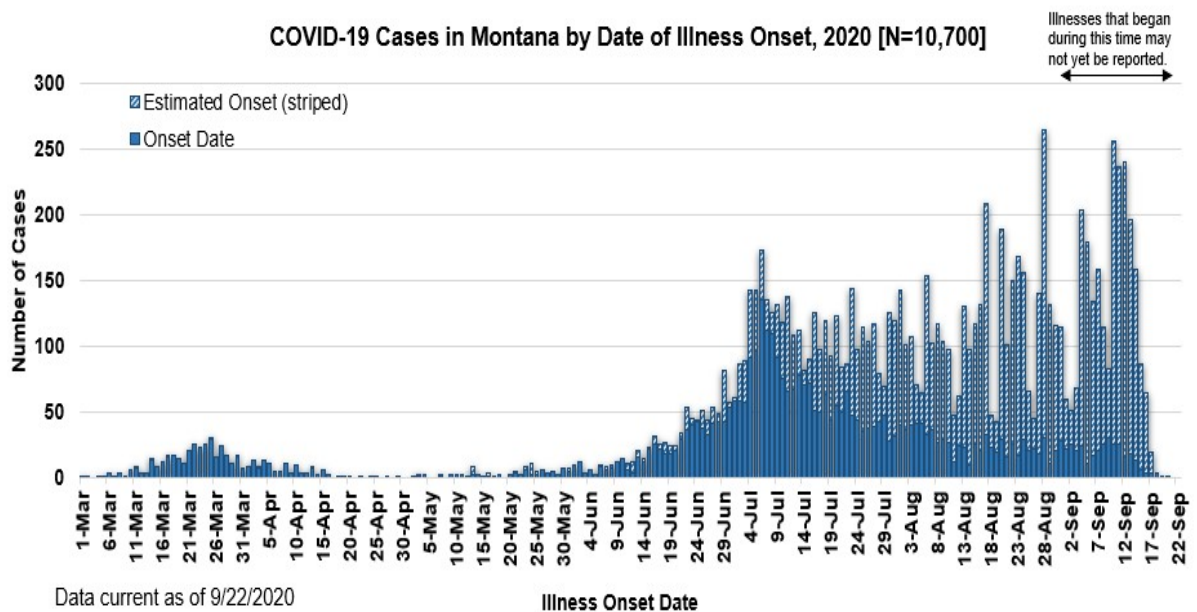
[Additional information on COVID-19 in Montana Long Term Care and Assisted Living Facilities](#)

[Additional information on COVID-19 in Montana schools](#)

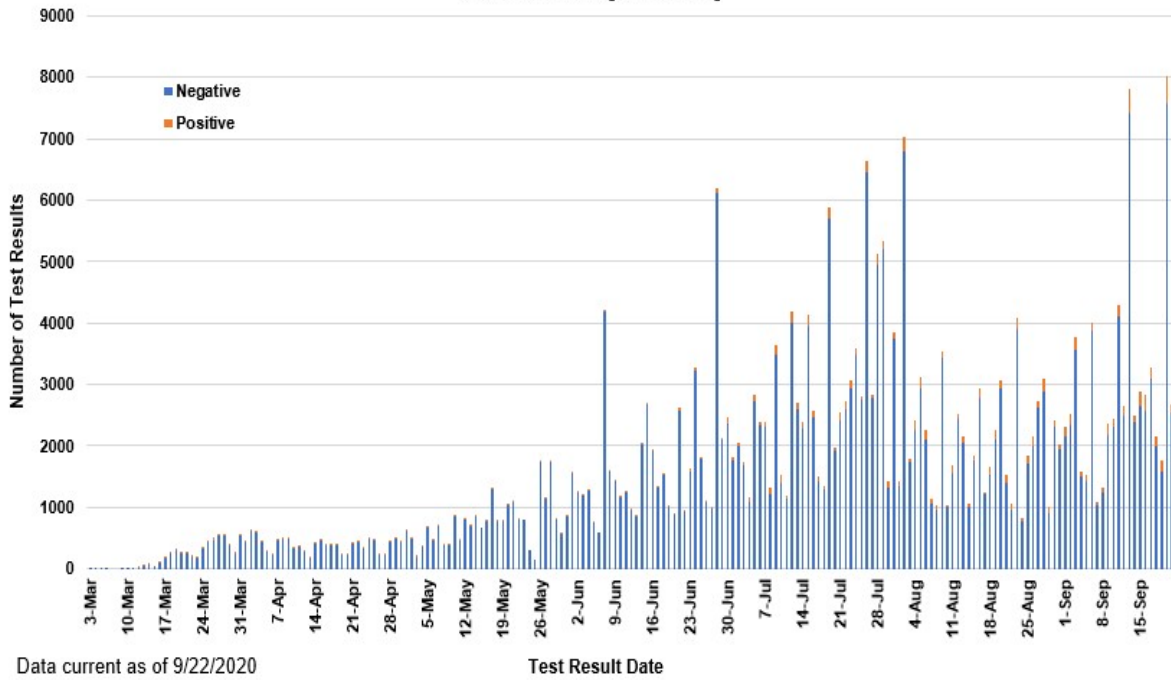
County of Residence	Number of Cases	Number of Deaths	Community Transmission*
Beaverhead	77	1	Yes
Big Horn	875	21	Yes
Blaine	16		
Broadwater	17		
Carbon	112		
Cascade	603	5	Yes
Chouteau	18		
Custer	104	2	
Daniels	4		
Dawson	75	1	
Deer Lodge	113		
Fallon	5		
Fergus	58	1	
Flathead	903	16	Yes
Gallatin	1234	4	Yes
Garfield	16		
Glacier	209	1	Yes
Golden Valley	3		
Granite	22		
Hill	135	3	
Jefferson	65		
Judith Basin	6		
Lake	255	1	
Lewis and Clark	227	3	Yes
Liberty	16		
Lincoln	106	3	
Madison	97	1	Yes
McCone	19		
Meagher	25	2	
Mineral	2		
Missoula	583	3	Yes
Musselshell	35	1	
Park	88		
Phillips	118		
Pondera	23		
Powder River	3		
Powell	10		

County of Residence	Number of Cases	Number of Deaths	Community Transmission*
Prairie	1		
Ravalli	129	2	Yes
Richland	77	2	
Roosevelt	199	1	
Rosebud	593	18	Yes
Sanders	45	1	
Sheridan	14		
Silver Bow	234		Yes
Stillwater	55	2	
Sweet Grass	38	1	
Teton	20		
Toole	71	6	
Treasure	3		
Valley	61		
Wheatland	10		
Wibaux	9		
Yellowstone	2882	61	Yes
Total	10,700	163	

* Community transmission - a community has identified cases who are unable to be linked with other known cases or travel. This status has been determined after consultation between state and local health departments.



**SARS-Cov-2 PCR Testing at Montana Public Health Laboratory and Reference Laboratories,
Montana 2020 [n=314,009]**



View your county's test positivity rate at the [Center for Medicare and Medicaid Services' \(CMS\) webpage](#).

Hospitalization Status	Number of Cases (percent of total)
Ever hospitalized	584 (5%)
Not Hospitalized	10,116 (95%)
Total	10,700

Age Group	Number of Cases (percent of total)
0-9 years	462 (4%)
10-19 years	1144 (11%)
20-29 years	2408 (23%)
30-39 years	1842 (17%)
40-49 years	1411 (13%)
50-59 years	1307 (12%)
60-69 years	1116 (10%)
70-79 years	641 (6%)

Age Group	Number of Cases (percent of total)
80-89 years	296 (3%)
90-99 years	70 (<1%)
100+	3 (<1%)
Total	10,700

Sex	Number of Cases (percent of total)
Female	5373 (50%)
Male	5327 (50%)
Total	10,700

Race and Ethnicity	Number of Cases (percent of total)
White	5420 (51%)
American Indian, Alaska Native, Native Hawaiian, and Pacific Islander	1823 (17%)
Asian	35 (<1%)
Black or African American	69 (<1%)
Other Race	101 (1%)
Undetermined/Under investigation	3208 (30%)
Total	10,700
Among those with ethnicity specified:	
Hispanic/Latino	368 (3%)
Not Hispanic/Latino	6767 (63%)
Undetermined/Under investigation	3565 (33%)
Total	10,700

Current Status of Cases	Number of Cases (percent of total)
Hospitalized	111 (1.0%)
Deceased	163 (1.5%)
Recovering	2489 (23%)
Recovered and released from isolation	7937 (74%)
Total number of cases	10,700

Location (at time of testing) of individuals diagnosed but not residing or counted in

Montana:

County	Number of Cases (percent of total)
Beaverhead	3 (1%)
Big Horn	1 (<1%)
Carbon	3 (1%)
Cascade	20 (9%)
Custer	4 (2%)
Dawson	2 (1%)
Deer Lodge	1 (<1%)
Fallon	1 (<1%)
Fergus	2 (1%)
Flathead	46 (19%)
Gallatin	49 (20%)
Glacier	1 (<1%)
Granite	1 (<1%)
Lake	10 (4%)
Lewis and Clark	6 (2%)
Lincoln	3 (1%)
Madison	26 (11%)
Meagher	1 (<1%)
Missoula	14 (5%)
Park	10 (3%)
Powell	1 (<1%)
Ravalli	8 (3%)
Silver Bow	5 (2%)
Stillwater	2 (1%)
Sweet Grass	3 (1%)
Toole	2 (1%)
Yellowstone	20 (9%)
Total	245

*Cases reported in the tables above include **13** residents of other states who were tested, isolated and/or hospitalized in Montana during the early phases of the pandemic. As COVID-19 is now widespread across the United States, data no longer include out-of-state residents who test positive in Montana in order to align with Council of State and Territorial Epidemiologists guidelines that classify cases by the individual's usual state of residence. This is standard practice for all communicable diseases to ensure accurate case reporting for Montana and the US. Additional individuals were diagnosed in Montana but are not included due to residency and/or the transient nature of their visit to the state: data for these individuals are reflected in the table immediately above.*

Communicable Disease Epidemiology Staff Listing



To submit a question or comment to the Communicable Disease Epidemiology Program, please click on the suggestion box to access our online form.

 [Diseases A-Z](#)

 [Disease Reporting](#)

 [Data and Reports](#)

 [Contact Us](#)

Other Program Areas

 [Tuberculosis \(TB\)](#)

 [Healthcare Associated Infections \(HAI\)](#)

 [Sexually Transmitted Diseases \(HIV/STD\)](#)

 [Antimicrobial Resistance](#)

 [Follow DPHHS](#)

The DPHHS CDEpi Section mission is to create, maintain, support, and strengthen routine surveillance and detection systems and epidemiological investigation processes, as well as to expand these systems and processes in response to incidents of public health significance.

[Nondiscrimination Notice/Policy](#)

[Notice of Use of Protected Health Information](#)

[Disclaimer](#)

[Contact Webmaster](#)

[Language Assistance Available](#)

[Español](#) | [Deutsch](#) | [繁體中文](#) | [日本語](#) | [Tagalog](#) | [Français](#) | [Русский](#) | [한국어](#) | [العربية](#) | [ไทย](#) | [Norsk](#) | [Tiếng Việt](#) | [український](#) | [Pennsilfaanisch Deutsch](#) | [Italiano](#)