

Coronavirus Disease 2019 (COVID-19)

[Analysis of COVID-19 Cases in Montana as of 9/18/2020](#)

[Archive of COVID-19 Montana Analyses](#)



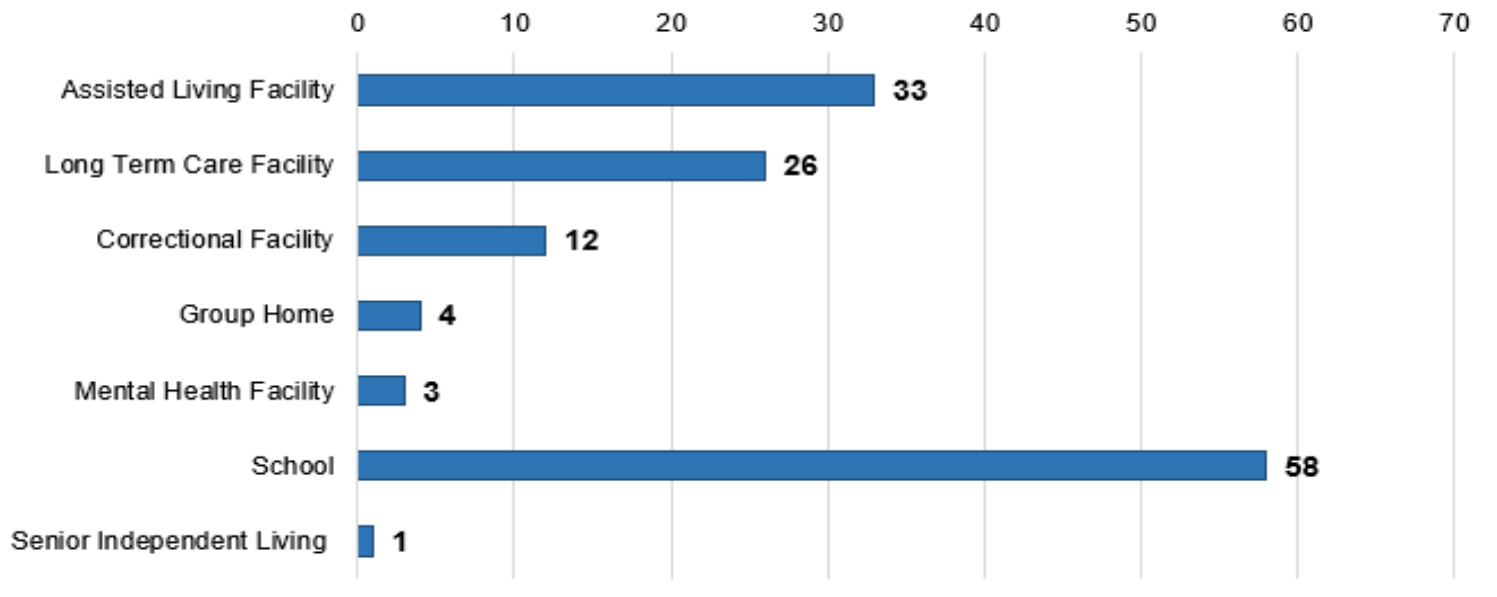
Demographic Information for Confirmed Cases

COVID-19 Cases in Montana	
Total Number of Cases	10,912
- Number of Deaths	165

*\* Tables and charts are updated by 10 am every morning.*



## Number of congregate settings with COVID-19 cases by type in Montana (n=137)



[Additional information on COVID-19 in Montana Long Term Care and Assisted Living Facilities](#)

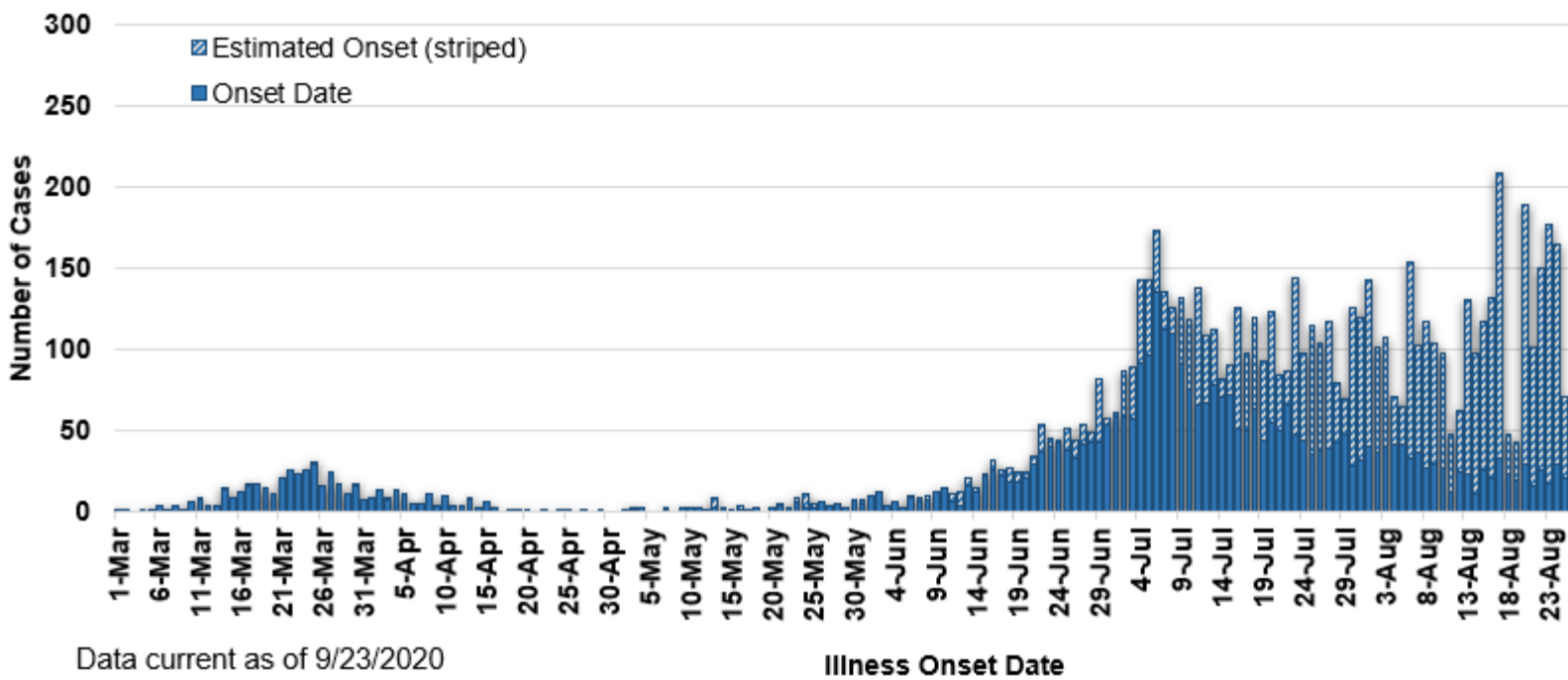
[Additional information on COVID-19 in Montana schools](#)

County of Residence	Number of Cases	Number of Deaths	Community Transmission*
Beaverhead	78	1	Yes
Big Horn	866	22	Yes
Blaine	21		
Broadwater	17		
Carbon	115		
Cascade	624	5	Yes
Chouteau	26		
Custer	110	2	
Daniels	5		
Dawson	76	1	
Deer Lodge	114		
Fallon	5		
Fergus	60	1	
Flathead	923	16	Yes
Gallatin	1247	4	Yes
Garfield	16		
Glacier	208	1	Yes
Golden Valley	3		
Granite	22		
Hill	143	3	
Jefferson	67		
Judith Basin	6		
Lake	260	1	
Lewis and Clark	235	3	Yes
Liberty	16		
Lincoln	106	3	
Madison	97	1	Yes
McCone	19		
Meagher	25	2	
Mineral	2		
Missoula	584	3	Yes

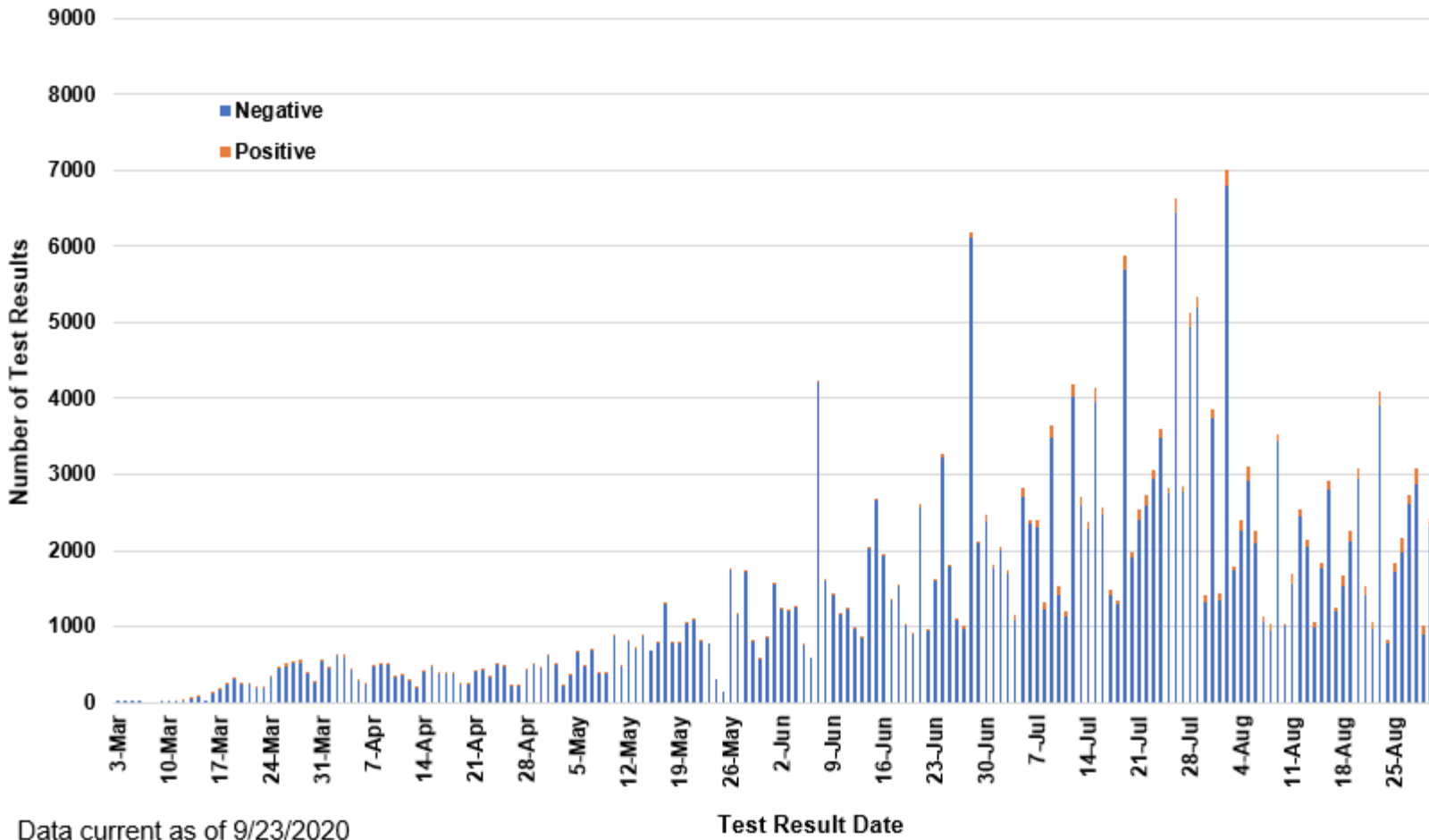
County of Residence	Number of Cases	Number of Deaths	Community Transmission*
Musselshell	35	1	
Park	92		
Phillips	119		
Pondera	23		
Powder River	5		
Powell	10		
Prairie	1		
Ravalli	129	2	Yes
Richland	77	2	
Roosevelt	213	1	
Rosebud	614	18	Yes
Sanders	45	1	
Sheridan	13		
Silver Bow	241		Yes
Stillwater	56	2	
Sweet Grass	40	1	
Teton	21		
Toole	71	6	
Treasure	3		
Valley	61		
Wheatland	11		
Wibaux	9		
Yellowstone	2927	62	Yes
Total	10,912	165	

\* Community transmission - a community has identified cases who are unable to be linked with other known cases or travel. This status has been determined after consultation between state and local health departments.

**COVID-19 Cases in Montana by Date of Illness Onset, 2020 [N=10,912]**



# SARS-Cov-2 PCR Testing at Montana Public Health Laboratory and Reference Laboratories, Montana 2020 [n=317,160]



View your county's test positivity rate at the [Center for Medicare and Medicaid Services' \(CMS\) webpage](#).

Hospitalization Status	Number of Cases (percent of total)
Ever hospitalized	601 (5%)
Not Hospitalized	10,311 (95%)
Total	10,912

Age Group	Number of Cases (percent of total)
0-9 years	468 (4%)
10-19 years	1178 (11%)
20-29 years	2454 (23%)
30-39 years	1873 (17%)
40-49 years	1444 (13%)
50-59 years	1328 (12%)
60-69 years	1149 (10%)
70-79 years	648 (6%)
80-89 years	297 (3%)
90-99 years	70 (<1%)
100+	3 (<1%)
Total	10,912

Sex	Number of Cases (percent of total)
Female	5507 (50%)
Male	5405 (50%)
Total	10,912

Race and Ethnicity	Number of Cases (percent of total)
White	5477 (50%)
American Indian, Alaska Native, Native Hawaiian, and Pacific Islander	1871 (17%)
Asian	35 (<1%)
Black or African American	69 (<1%)
Other Race	102 (1%)
Undetermined/Under investigation	3358 (31%)
Total	10,912
<b>Among those with ethnicity specified:</b>	
Hispanic/Latino	368 (3%)
Not Hispanic/Latino	6833 (63%)
Undetermined/Under investigation	3611 (33%)
Total	10,912

Current Status of Cases	Number of Cases (percent of total)
Hospitalized	124 (1.1%)
Deceased	165 (1.5%)
Recovering	2113 (19%)
Recovered and released from isolation	8510 (78%)
Total number of cases	10,912

**Location (at time of testing) of individuals diagnosed but not residing or counted in Montana:**

County	Number of Cases (percent of total)
Beaverhead	3 (1%)
Big Horn	1 (<1%)
Carbon	3 (1%)
Cascade	20 (9%)
Custer	4 (2%)
Dawson	2 (1%)
Deer Lodge	1 (<1%)
Fallon	1 (<1%)
Fergus	2 (1%)
Flathead	46 (19%)
Gallatin	49 (20%)
Glacier	1 (<1%)
Granite	1 (<1%)
Lake	10 (4%)
Lewis and Clark	6 (2%)
Lincoln	3 (1%)
Madison	26 (11%)
Meagher	1 (<1%)
Missoula	14 (5%)
Park	10 (3%)
Powell	1 (<1%)
Ravalli	8 (3%)
Silver Bow	5 (2%)
Stillwater	2 (1%)
Sweet Grass	3 (1%)
Toole	2 (1%)
Yellowstone	20 (9%)
Total	245

*Cases reported in the tables above include 13 residents of other states who were tested, isolated and/or hospitalized in Montana during the early phases of the pandemic. As COVID-19 is now widespread across the United States, data no longer include out-of-state residents who test positive in Montana in order to align with Council of State and Territorial Epidemiologists guidelines that classify cases by the individual's usual state of residence. This is standard practice for all communicable diseases to ensure accurate case reporting for Montana and the US. Additional individuals were diagnosed in*

*Montana but are not included due to residency and/or the transient nature of their visit to the state: data for these individuals are reflected in the table immediately above.*