

Coronavirus Disease 2019 (COVID-19)

[Analysis of COVID-19 Cases in Montana as of 9/18/2020](#)

[Archive of COVID-19 Montana Analyses](#)



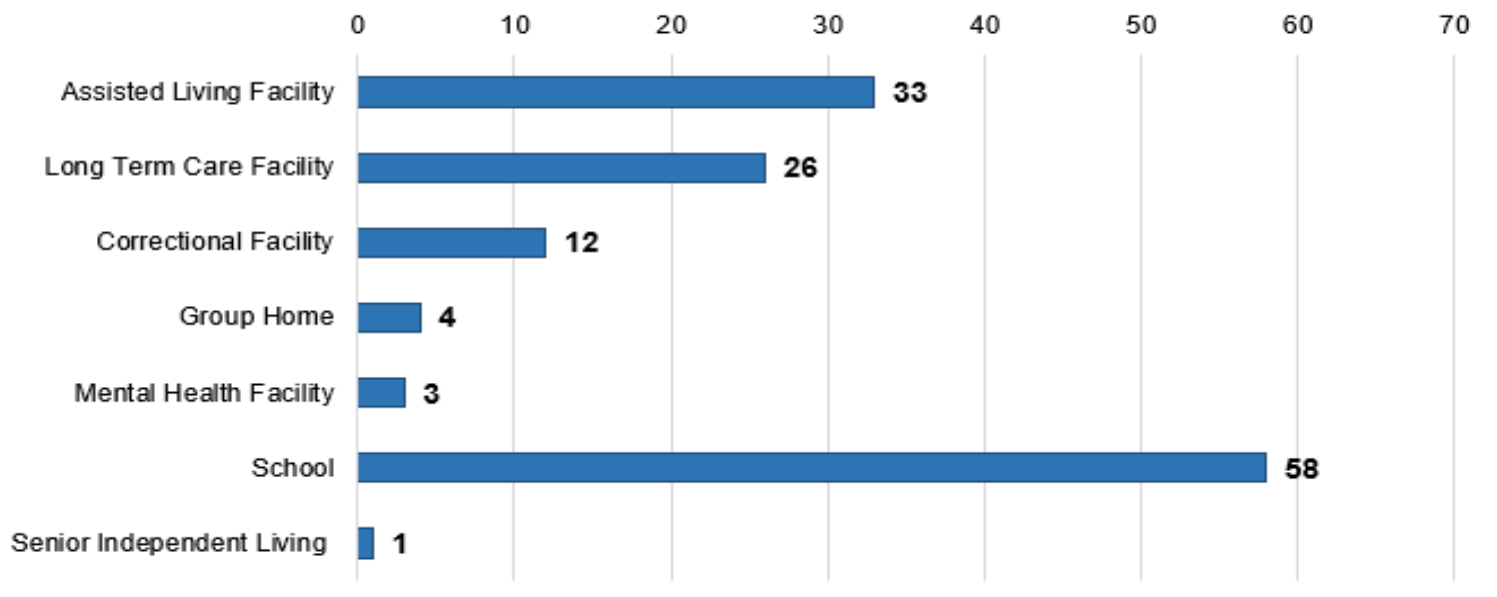
Demographic Information for Confirmed Cases

COVID-19 Cases in Montana	
Total Number of Cases	11,564
- Number of Deaths	170

** Tables and charts are updated by 10 am every morning.*



Number of congregate settings with COVID-19 cases by type in Montana (n=137)



[Additional information on COVID-19 in Montana Long Term Care and Assisted Living Facilities](#)

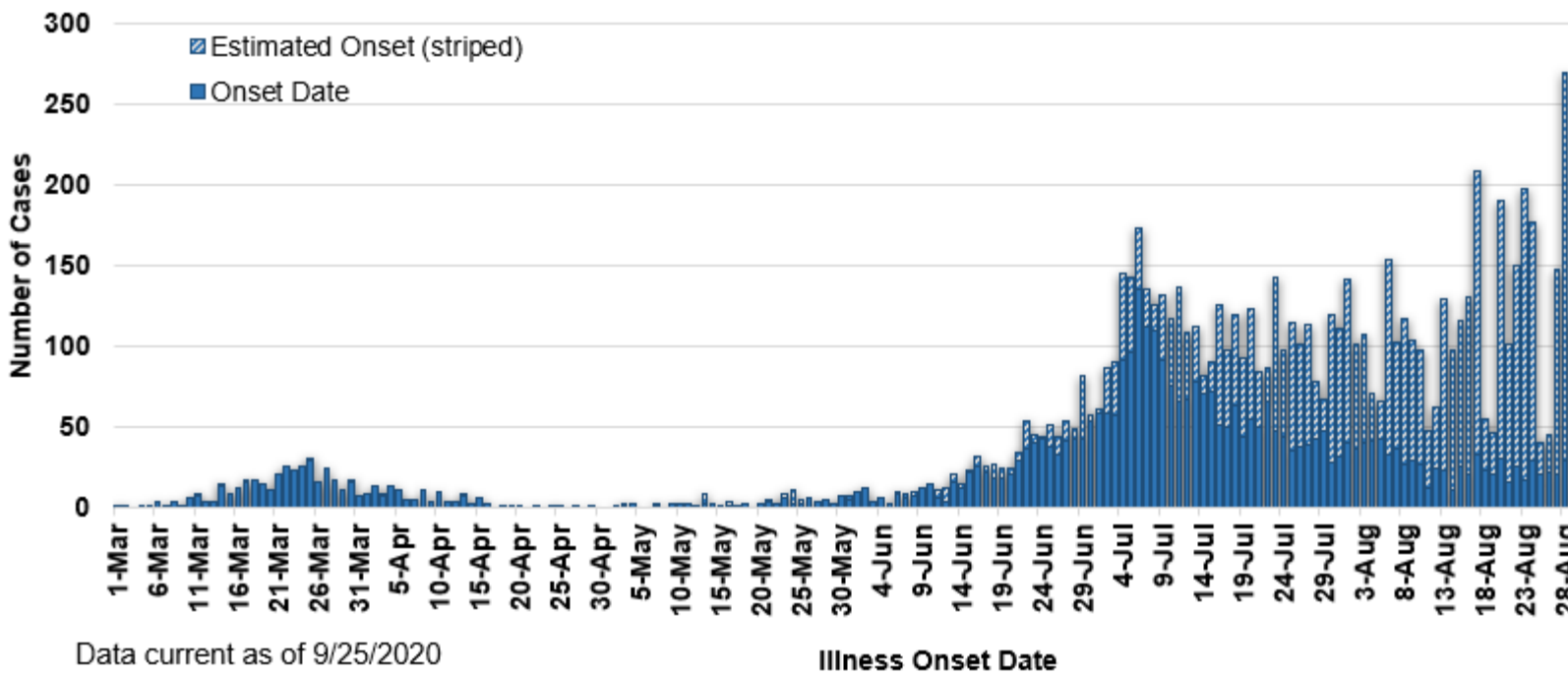
[Additional information on COVID-19 in Montana schools](#)

County of Residence	Number of Cases	Number of Deaths	Community Transmission*
Beaverhead	85	1	Yes
Big Horn	881	22	Yes
Blaine	21		
Broadwater	17		
Carbon	115		
Carter	3		
Cascade	658	5	Yes
Chouteau	28		
Custer	112	2	
Daniels	5		
Dawson	77	1	
Deer Lodge	114		
Fallon	5		
Fergus	64	1	
Flathead	956	16	Yes
Gallatin	1313	4	Yes
Garfield	17		
Glacier	250	1	Yes
Golden Valley	4		
Granite	22		
Hill	147	3	
Jefferson	74		
Judith Basin	6		
Lake	274	1	
Lewis and Clark	248	3	Yes
Liberty	18		
Lincoln	109	3	
Madison	100	1	Yes
McCone	19		
Meagher	25	2	
Mineral	2		

County of Residence	Number of Cases	Number of Deaths	Community Transmission*
Missoula	706	3	Yes
Musselshell	35	1	
Park	95		
Phillips	121		
Pondera	24		
Powder River	8		
Powell	12		
Prairie	1		
Ravalli	135	2	Yes
Richland	78	2	
Roosevelt	287	4	
Rosebud	630	18	Yes
Sanders	46	1	
Sheridan	13		
Silver Bow	249		Yes
Stillwater	62	2	
Sweet Grass	43	1	
Teton	21		
Toole	76	6	
Treasure	3		
Valley	79		
Wheatland	16	1	
Wibaux	9		
Yellowstone	3046	63	Yes
Total	11,564	170	

* Community transmission - a community has identified cases who are unable to be linked with other known cases or travel. This status has been determined after consultation between state and local health departments.

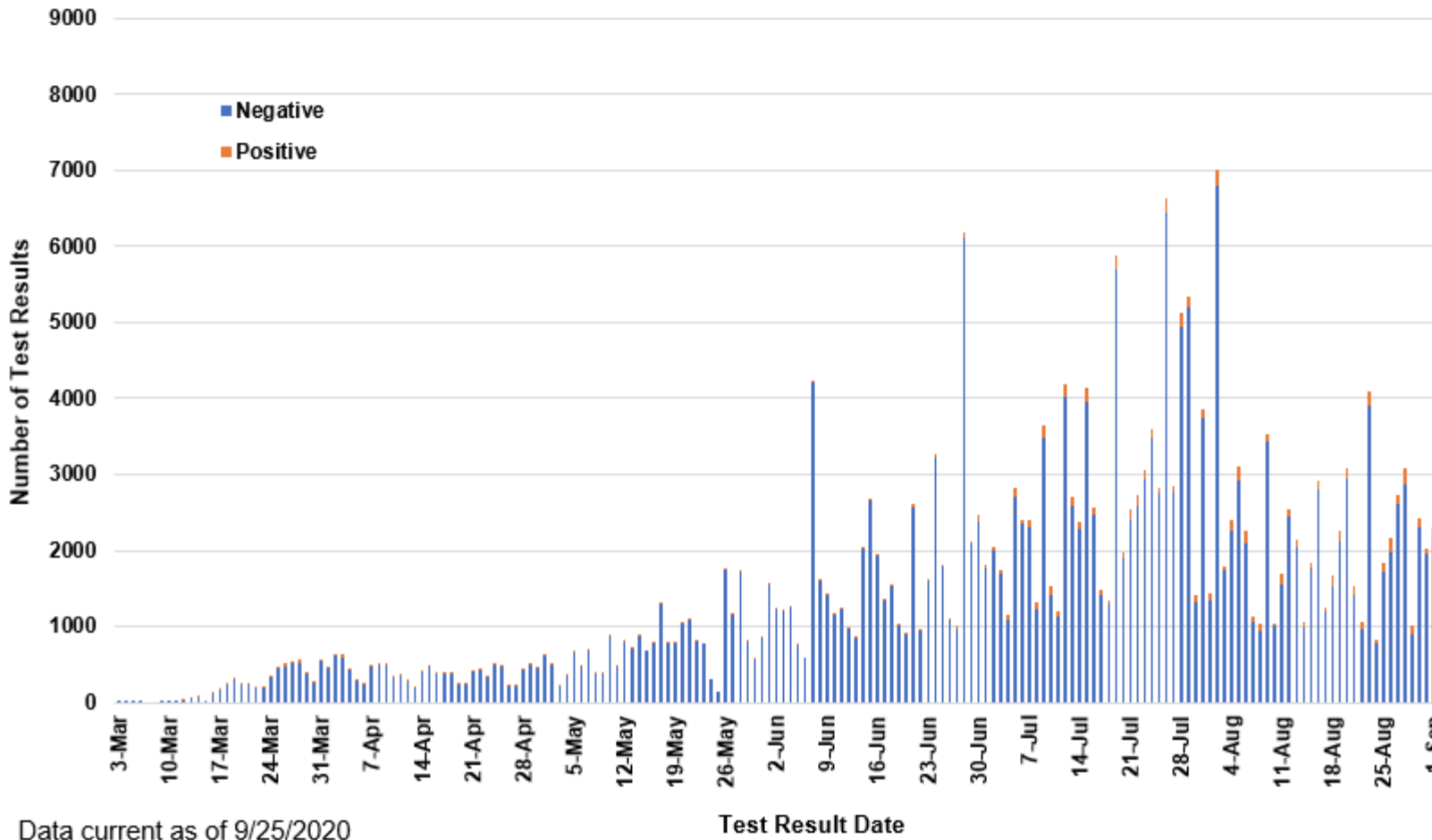
COVID-19 Cases in Montana by Date of Illness Onset, 2020 [N=11,564]



Data current as of 9/25/2020

Illness Onset Date

SARS-Cov-2 PCR Testing at Montana Public Health Laboratory and Reference Laboratories, Montana 2020 [n=326,116]



View your county's test positivity rate at the [Center for Medicare and Medicaid Services' \(CMS\) webpage](#).

Hospitalization Status	Number of Cases (percent of total)
Ever hospitalized	675 (6%)
Not Hospitalized	10,889 (94%)
Total	11,564

Age Group	Number of Cases (percent of total)
0-9 years	506 (4%)
10-19 years	1,278 (9%)
20-29 years	2,632 (24%)
30-39 years	1,976 (17%)
40-49 years	1,509 (13%)
50-59 years	1,406 (12%)
60-69 years	1,195 (10%)
70-79 years	679 (6%)
80-89 years	308 (3%)
90-99 years	72 (<1%)
100+	3 (<1%)
Total	11,564

Sex	Number of Cases (percent of total)
Female	5826 (50%)
Male	5738 (50%)
Total	11,564

Race and Ethnicity	Number of Cases (percent of total)
White	5682 (49%)
American Indian, Alaska Native, Native Hawaiian, and Pacific Islander	1989 (17%)
Asian	38 (<1%)
Black or African American	71 (<1%)
Other Race	109 (1%)
Undetermined/Under investigation	3,675 (32%)
Total	11,564
Among those with ethnicity specified:	
Hispanic/Latino	377 (3%)
Not Hispanic/Latino	7,076 (63%)
Undetermined/Under investigation	4,111 (34%)
Total	11,564

Current Status of Cases	Number of Cases (percent of total)
Hospitalized	140 (1.2%)
Deceased	170 (1.5%)
Recovering	2,573 (22%)
Recovered and released from isolation	8,681 (75%)
Total number of cases	11,564

Location (at time of testing) of individuals diagnosed but not residing or counted in Montana:

County	Number of Cases (percent of total)
Beaverhead	3 (1%)
Big Horn	1 (<1%)
Carbon	3 (1%)
Cascade	20 (9%)
Custer	4 (2%)
Dawson	3 (1%)
Deer Lodge	1 (<1%)
Fallon	1 (<1%)
Fergus	2 (1%)
Flathead	46 (19%)
Gallatin	49 (20%)
Glacier	1 (<1%)
Granite	1 (<1%)
Lake	10 (4%)
Lewis and Clark	6 (2%)
Lincoln	3 (1%)
Madison	26 (11%)
Meagher	1 (<1%)
Missoula	14 (5%)
Park	10 (3%)
Powell	1 (<1%)
Ravalli	8 (3%)
Silver Bow	5 (2%)
Stillwater	2 (1%)
Sweet Grass	3 (1%)
Toole	2 (1%)
Yellowstone	20 (9%)
Total	246

Cases reported in the tables above include **13** residents of other states who were tested, isolated and/or hospitalized in Montana during the early phases of the pandemic. As COVID-19 is now widespread across the United States, data no longer include out-of-state residents who test positive in Montana in order to align with Council of State and Territorial Epidemiologists guidelines that classify cases by the individual's usual state of residence. This is standard practice for all communicable diseases to ensure accurate case reporting for Montana and the US. Additional individuals were diagnosed in Montana but are not included due to residency and/or the transient nature of their visit to the state: data for these individuals are reflected in the table immediately above.