

Sheila Hogan, Director

Children/Families

Disabilities

Seniors

Health

[Home](#) » [Public Health & Safety](#) » [Communicable Disease Epidemiology](#) » [Diseases A to Z](#) » [Coronavirus](#) » [Demographics](#)

Coronavirus Disease 2019 (COVID-19)

[Analysis of COVID-19 Cases in Montana as of 9/18/2020](#)

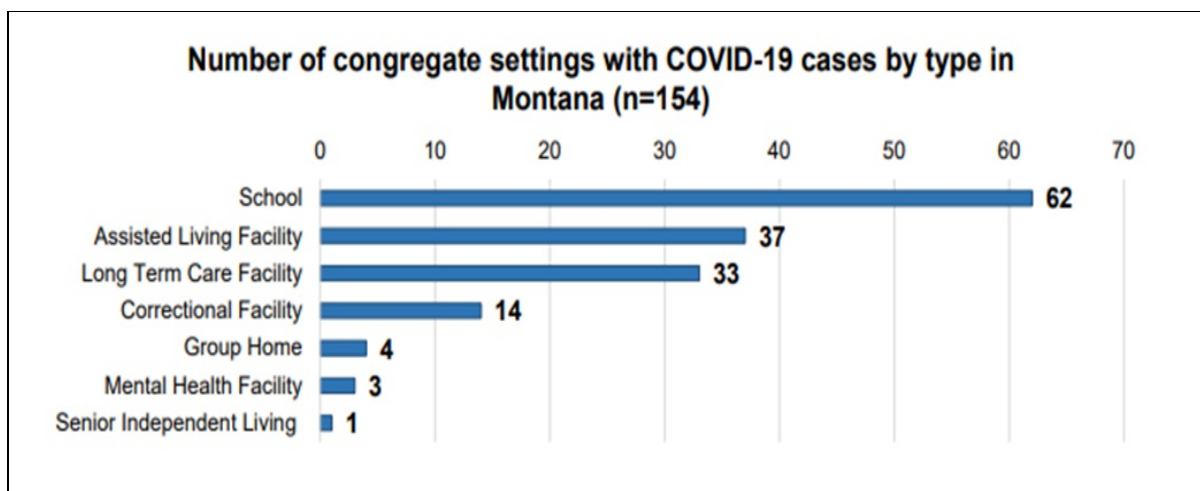
[Archive of COVID-19 Montana Analyses](#)



Demographic Information for Confirmed Cases

COVID-19 Cases in Montana	
Total Number of Cases	12,724
- Number of Deaths	177

** Tables and charts are updated by 10 am every morning.*



[Additional information on COVID-19 in Montana Long Term Care and Assisted Living Facilities](#)

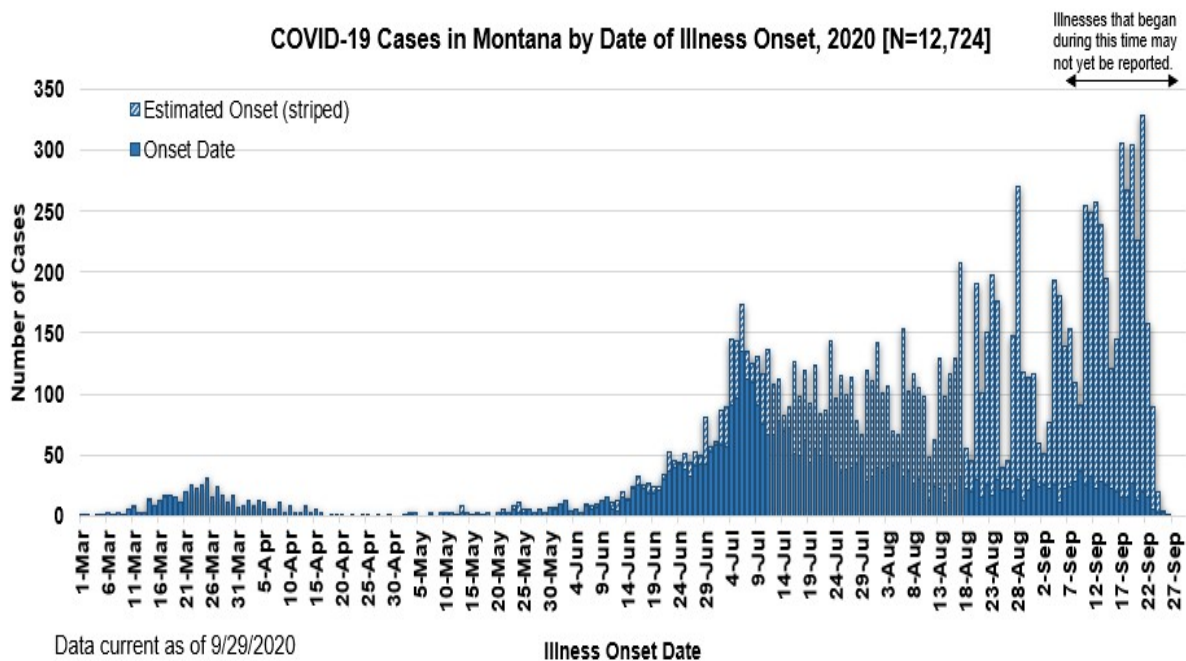
[Additional information on COVID-19 in Montana schools](#)

County of Residence	Number of Cases	Number of Deaths	Community Transmission*
---------------------	-----------------	------------------	-------------------------

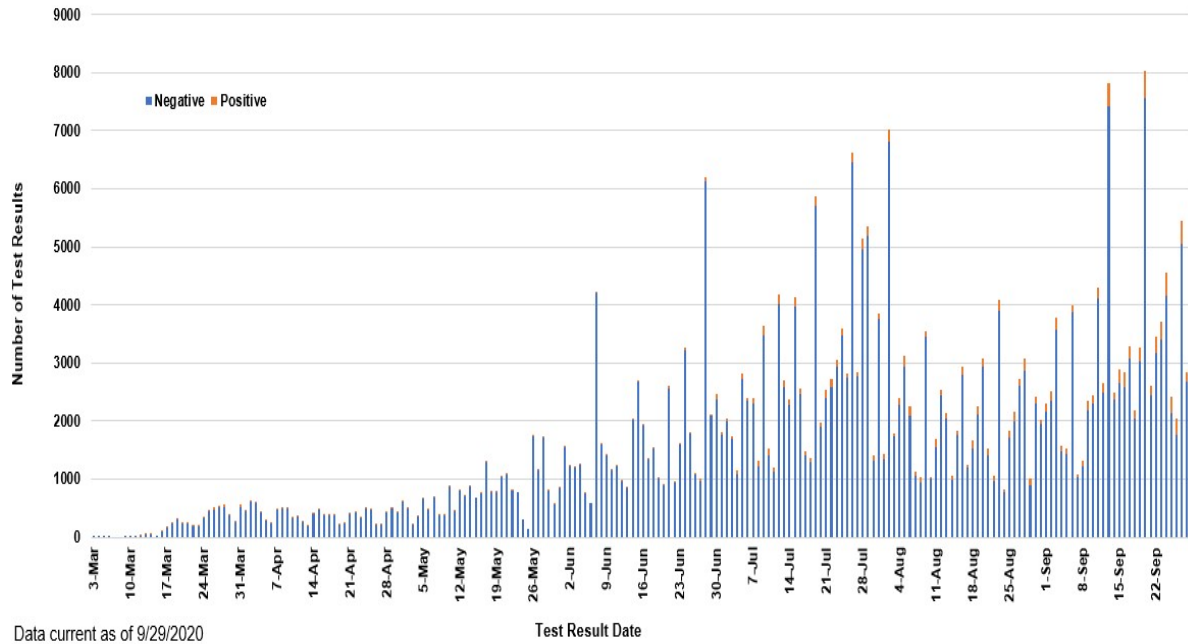
County of Residence	Number of Cases	Number of Deaths	Community Transmission*
Beaverhead	94	1	Yes
Big Horn	928	22	Yes
Blaine	31		
Broadwater	18		
Carbon	119		
Carter	6		
Cascade	729	5	Yes
Chouteau	29		
Custer	116	2	
Daniels	5		
Dawson	78	1	
Deer Lodge	115		
Fallon	5		
Fergus	65	1	
Flathead	1112	18	Yes
Gallatin	1380	4	Yes
Garfield	17		
Glacier	340	1	Yes
Golden Valley	5		
Granite	22		
Hill	179	3	
Jefferson	83		
Judith Basin	8		
Lake	281	1	
Lewis and Clark	308	3	Yes
Liberty	20		
Lincoln	126	3	
Madison	110	1	Yes
McCone	23		
Meagher	25	2	
Mineral	4		
Missoula	794	3	Yes
Musselshell	37	1	
Park	100		
Phillips	122		
Pondera	49		
Powder River	10		
Powell	12		

County of Residence	Number of Cases	Number of Deaths	Community Transmission*
Prairie	4		
Ravalli	149	2	Yes
Richland	83	2	
Roosevelt	384	4	
Rosebud	639	19	Yes
Sanders	47	1	
Sheridan	16		
Silver Bow	267		Yes
Stillwater	77	2	
Sweet Grass	47	1	
Teton	25		
Toole	107	6	
Treasure	3		
Valley	86		
Wheatland	20	1	
Wibaux	9		
Yellowstone	3,256	67	Yes
Total	12,724	177	

* Community transmission - a community has identified cases who are unable to be linked with other known cases or travel. This status has been determined after consultation between state and local health departments.



SARS-Cov-2 PCR Testing at Montana Public Health Laboratory and Reference Laboratories, Montana 2020 [n=339,926]



Data current as of 9/29/2020

[View your county's test positivity rate at the Center for Medicare and Medicaid Services' \(CMS\) webpage.](#)

Hospitalization Status	Number of Cases (percent of total)
Ever hospitalized	709 (6%)
Not Hospitalized	12,015 (94%)
Total	12,724

Age Group	Number of Cases (percent of total)
0-9 years	556 (4%)
10-19 years	1,428 (11%)
20-29 years	2,881 (23%)
30-39 years	2,141 (17%)
40-49 years	1,646 (13%)
50-59 years	1,566 (12%)
60-69 years	1,305 (10%)
70-79 years	754 (6%)
80-89 years	362 (3%)

Age Group	Number of Cases (percent of total)
90-99 years	81 (<1%)
100+	4 (<1%)
Total	12,724

Sex	Number of Cases (percent of total)
Female	6,429 (50.5%)
Male	6,295 (49.5%)
Total	12,724

Race and Ethnicity	Number of Cases (percent of total)
White	5,968 (47%)
American Indian, Alaska Native, Native Hawaiian, and Pacific Islander	2,109 (17%)
Asian	40 (<1%)
Black or African American	75 (<1%)
Other Race	121 (1%)
Undetermined/Under investigation	4,379 (35%)
Total	12,724
Among those with ethnicity specified:	
Hispanic/Latino	387 (3%)
Not Hispanic/Latino	7,371 (58%)
Undetermined/Under investigation	4,966 (39%)
Total	12,724

Current Status of Cases	Number of Cases (percent of total)
Hospitalized	166 (1.3%)
Deceased	177 (1.4%)
Recovering	3,288 (27%)
Recovered and released from isolation	9,093 (71%)
Total number of cases	12,724

Location (at time of testing) of individuals diagnosed but not residing or counted in Montana:

County	Number of Cases (percent of total)
Beaverhead	3 (1%)
Big Horn	1 (<1%)
Carbon	3 (1%)
Cascade	20 (9%)
Custer	4 (2%)
Dawson	3 (1%)
Deer Lodge	1 (<1%)
Fallon	1 (<1%)
Fergus	2 (1%)
Flathead	46 (19%)
Gallatin	49 (20%)
Glacier	1 (<1%)
Granite	1 (<1%)
Lake	10 (4%)
Lewis and Clark	6 (2%)
Lincoln	3 (1%)
Madison	27 (11%)
Meagher	1 (<1%)
Missoula	15 (5%)
Park	10 (3%)
Powell	1 (<1%)
Ravalli	8 (3%)
Silver Bow	5 (2%)
Stillwater	2 (1%)
Sweet Grass	3 (1%)
Toole	2 (1%)
Yellowstone	20 (9%)
Total	248

*Cases reported in the tables above include **13** residents of other states who were tested, isolated and/or hospitalized in Montana during the early phases of the pandemic. As COVID-19 is now widespread across the United States, data no longer include out-of-state residents who test positive in Montana in order to align with Council of State and Territorial Epidemiologists guidelines that classify cases by the individual's usual state of residence. This is standard practice for all communicable diseases to ensure accurate case reporting for Montana and the US. Additional individuals were diagnosed in Montana but are not included due to residency and/or the transient nature of their visit to the state: data for these individuals are reflected in the table immediately above.*



Communicable Disease Epidemiology Staff Listing



To submit a question or comment to the Communicable Disease Epidemiology Program, please click on the suggestion box to access our online form.

 [Diseases A-Z](#)

 [Disease Reporting](#)

 [Data and Reports](#)

 [Contact Us](#)

Other Program Areas

 [Tuberculosis \(TB\)](#)

 [Healthcare Associated Infections \(HAI\)](#)

 [Sexually Transmitted Diseases \(HIV/STD\)](#)

 [Antimicrobial Resistance](#)

 [Follow DPHHS](#)

The DPHHS CDEpi Section mission is to create, maintain, support, and strengthen routine surveillance and detection systems and epidemiological investigation processes, as well as to expand these systems and processes in response to incidents of public health significance.

[Nondiscrimination Notice/Policy](#)

[Notice of Use of Protected Health Information](#)

[Disclaimer](#)

[Contact Webmaster](#)

[Language Assistance Available](#)

[Español](#) | [Deutsch](#) | [繁體中文](#) | [日本語](#) | [Tagalog](#) | [Français](#) | [Русский](#) | [한국어](#) | [العربية](#) | [ไทย](#) | [Norsk](#) | [Tiếng Việt](#) | [український](#) | [Pennsilfaanisch Deitsch](#) | [Italiano](#)

