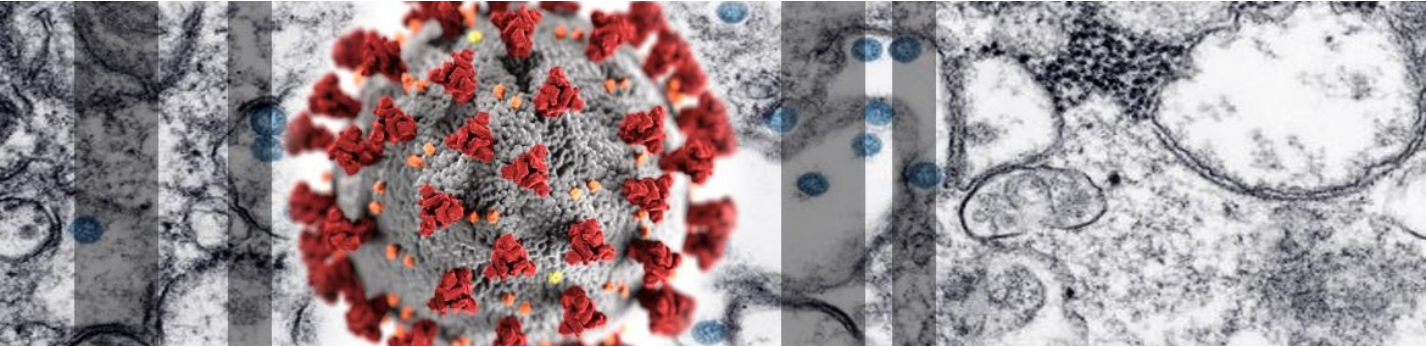


New Hampshire Department of Health and Human ServicesCOVID-19

- ☐ [Home](#)
- ☐ [Resources & Guidance](#)Resources & Guidance
 - [Residents](#)
 - [Healthcare Providers](#)
 - [Schools](#)
 - [Parents](#)
 - [Businesses](#)
 - [Other Guidance](#)
 - [Volunteers](#)
- ☐ [FAQs](#)
- ☐ [News](#)News
 - [Updates](#)
 - [Press Releases](#)
 - [Emergency Orders](#)

☐ [DHHS Website](#)



Novel Coronavirus 2019 (COVID-19)

All Information on the Coronavirus COVID-19 in New Hampshire

Emergency Order #17 [Essential Business List](#) 



Have questions about COVID-19?

Call 2-1-1

Phone dial: 1-866-444-4211

TTY: 603-634-3388

Federal/State Resources

- [COVID-19 The Future of the Epidemic in NH](#) 
- [NH DHHS Bureau of Infectious Disease Control](#)
- [NH DOJ COVID-19 Scam Alerts](#)
- [CDC Situation Summary](#)
- [CDC 2019 Novel Coronavirus \(COVID-19\), Wuhan, China](#)
- [World Health Organization - Coronavirus](#)
- [Civil Rights, HIPAA, and COVID-19](#) 
- [CDC-ASL: 10 Things You Can do to Manage COVID-19 at Home](#)

[Notices Regarding Potential Community Exposures](#)

New Hampshire 2019 Novel Coronavirus (COVID-19) Summary Report

(data updated as of April 11, 2020, 9:00 AM)

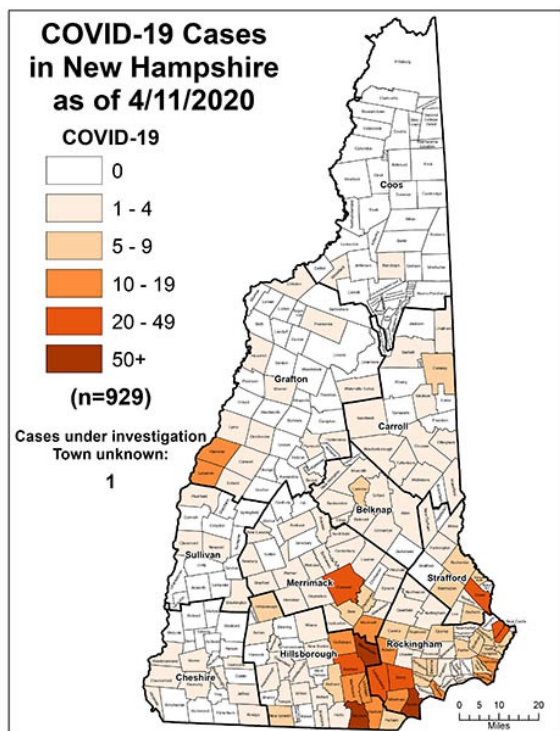
Number of Persons with COVID-19 ¹	929
Recovered	236 (25%)
Deaths Attributed to COVID-19	23 (2%)
Total Current COVID-19 Cases	670
Persons Who Have Been Hospitalized for COVID-19	146 (16%)

Persons Tested Negative at Selected Laboratories ²	9,996
Persons with Specimens Submitted to NH PHL	4,952
Persons with Test Pending at NH PHL ³	119
Persons Being Monitored in NH (approximate point in time)	2,275

¹ Includes specimens presumptive-positive at any laboratory and those confirmed by CDC confirmatory testing.

² Includes specimens tested at the NH Public Health Laboratories (PHL), LabCorp, Quest, Dartmouth-Hitchcock Medical Center, and those sent to CDC prior to NH PHL testing capacity.

³ Includes specimens received and awaiting testing at NH PHL. Does not include tests pending at commercial laboratories.




Cases by County

County	Cases
Belknap	21
Carroll	28
Cheshire	18
Coos	2
Grafton	43
Hillsborough - Other	134
Hillsborough - Manchester	147
Hillsborough - Nashua	86
Merrimack	71
Rockingham	314
Strafford	58
Sullivan	6
County TBD	1
Grand Total	929

- [Emergency Orders](#)
- [Explanation of Public Health Monitoring and Movement Restriction Terms](#) 
- [Emergency Responders Unprotected Exposure Guidance](#) 

Social Media

- [DHHS Facebook](#) 
- [DHHS Twitter](#) 
- [Public Health Facebook](#) 
- [Public Health Twitter](#) 

 Portable Document Format (.pdf). Visit nh.gov for a list of [free .pdf readers](#) for a variety of operating systems.

Select Language

New Hampshire Department of Health and Human Services
129 Pleasant Street | Concord, NH | 03301-3852

[NH.gov](#) | [privacy policy](#) | [accessibility policy](#) | [webmaster](#) | [DHHS Non-Discrimination Policy](#)
copyright . State of New Hampshire