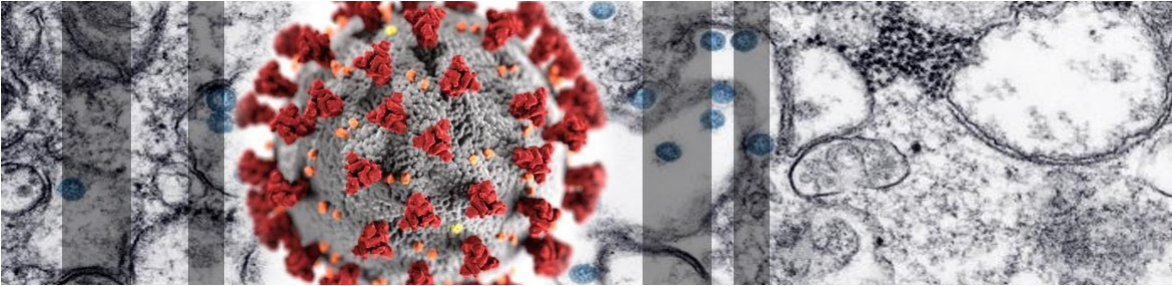


New Hampshire Department of Health and Human ServicesCOVID-19

- ☐ [Home](#)
- ☐ [Resources & Guidance](#)Resources & Guidance
 - [Residents](#)
 - [Healthcare Providers](#)
 - [Schools](#)
 - [Parents](#)
 - [Businesses](#)
 - [Other Guidance](#)
 - [Volunteers](#)

- ☐ [FAQs](#)
- ☐ [News](#)News
 - [Updates](#)
 - [Weekly Summary Reports](#)
 - [Press Releases](#)
 - [Emergency Orders](#)

- ☐ [DHHS Website](#)



searchable

Novel Coronavirus 2019 (COVID-19)

All Information on the Coronavirus COVID-19 in New Hampshire

Emergency Order #17 [Essential Business List](#)

Have questions about COVID-19?

Call 2-1-1

Phone dial: 1-866-444-4211

TTY: 603-634-3388

Federal/State Resources

- COVID-19 The Future of the Epidemic in NH
- NH DHHS Bureau of Infectious Disease Control
- NH DOJ COVID-19 Scam Alerts
- CDC Situation Summary
- CDC 2019 Novel Coronavirus (COVID-19), Wuhan, China
- World Health Organization - Coronavirus
- Civil Rights, HIPAA, and COVID-19
- CDC-ASL: 10 Things You Can do to Manage COVID-19 at Home

Notices Regarding Potential Community Exposures

COVID-19 Weekly Summary Reports (New)

New Hampshire 2019 Novel Coronavirus (COVID-19) Summary Report

(data updated as of April 13, 2020, 9:00 AM)

Number of Persons with COVID-19 ¹	1,020
Recovered	249 (24%)
Deaths Attributed to COVID-19	23 (2%)
Total Current COVID-19 Cases	748
Persons Who Have Been Hospitalized for COVID-19	152 (15%)
Current Hospitalizations ²	72
Persons Tested Negative at Selected Laboratories ³	10,590
Persons with Specimens Submitted to NH PHL	5,139
Persons with Test Pending at NH PHL ⁴	25
Persons Being Monitored in NH (approximate point in time)	2,250

¹ Includes specimens presumptive-positive at any laboratory and those confirmed by CDC confirmatory testing.

² Number of patients currently hospitalized with COVID-19 as reported by hospitals.

³ Includes specimens tested at the NH Public Health Laboratories (PHL), LabCorp, Quest, Dartmouth-Hitchcock Medical Center, and those sent to CDC prior to NH PHL testing capacity.

⁴ Includes specimens received and awaiting testing at NH PHL. Does not include tests pending at commercial laboratories.

COVID-19 Cases in New Hampshire as of 4/13/2020

COVID-19



0



1 - 4



5 - 9



10 - 19



20 - 49



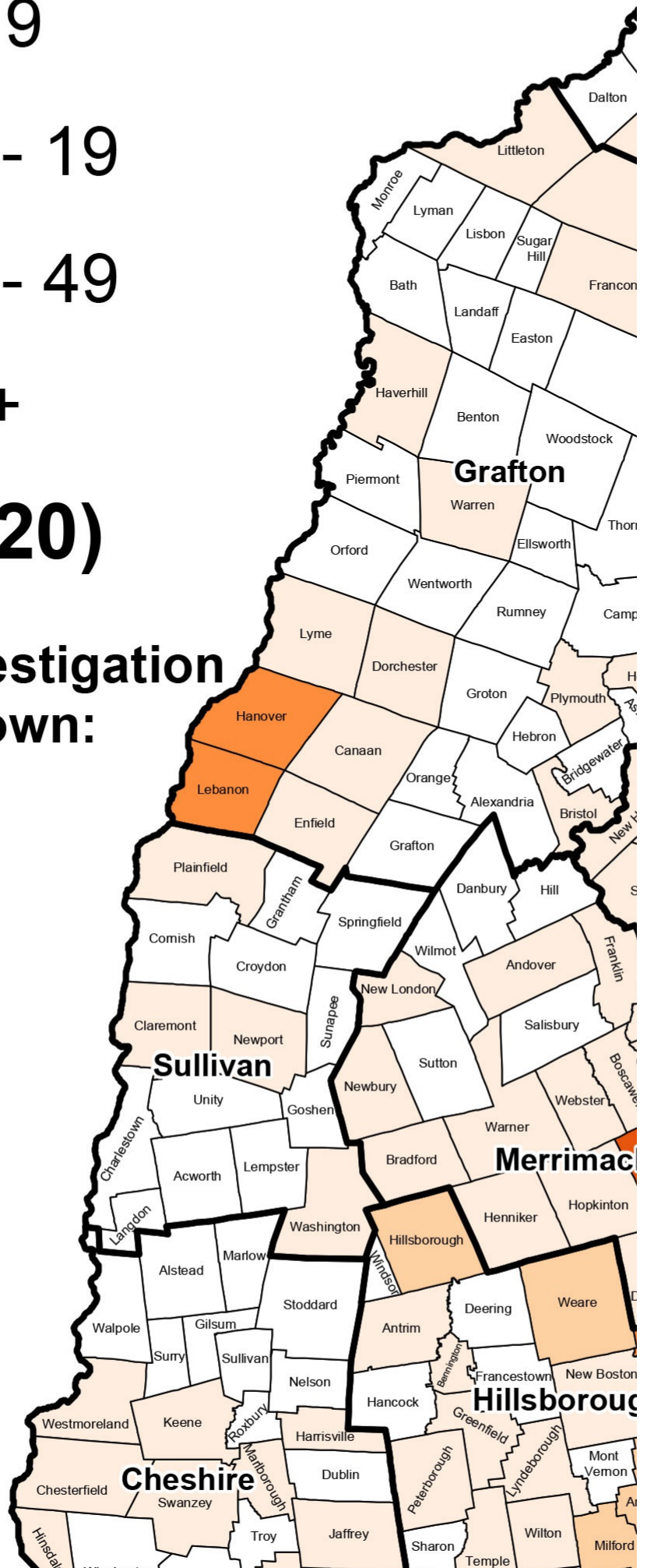
50+

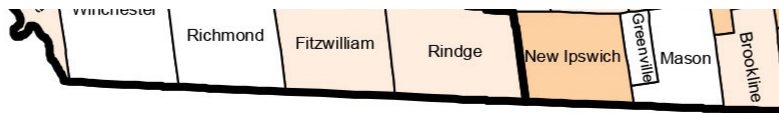
(n=1,020)

Cases under investigation

Town unknown:

1






Cases by County	
County	Cases
Belknap	22
Carroll	30
Cheshire	20
Coos	2
Grafton	45
Hillsborough - Other	153
Hillsborough - Manchester	156
Hillsborough - Nashua	89
Merrimack	75
Rockingham	360
Strafford	61
Sullivan	6
County TBD	1
Grand Total	1020

- [Emergency Orders](#)
- [Explanation of Public Health Monitoring and Movement Restriction Terms](#)
- [Emergency Responders Unprotected Exposure Guidance](#)

Social Media

- [DHHS Facebook](#) 
- [DHHS Twitter](#) 
- [Public Health Facebook](#) 
- [Public Health Twitter](#) 

 Portable Document Format (.pdf). Visit [nh.gov](https://www.nh.gov) for a list of [free .pdf readers](#) for a variety of operating systems.

Select Language

Powered by [Google Translate](#)

New Hampshire Department of Health and Human Services
129 Pleasant Street | Concord, NH | 03301-3852

[NH.gov](#) | [privacy policy](#) | [accessibility policy](#) | [webmaster](#) | [DHHS Non-Discrimination Policy](#)
copyright . State of New Hampshire