

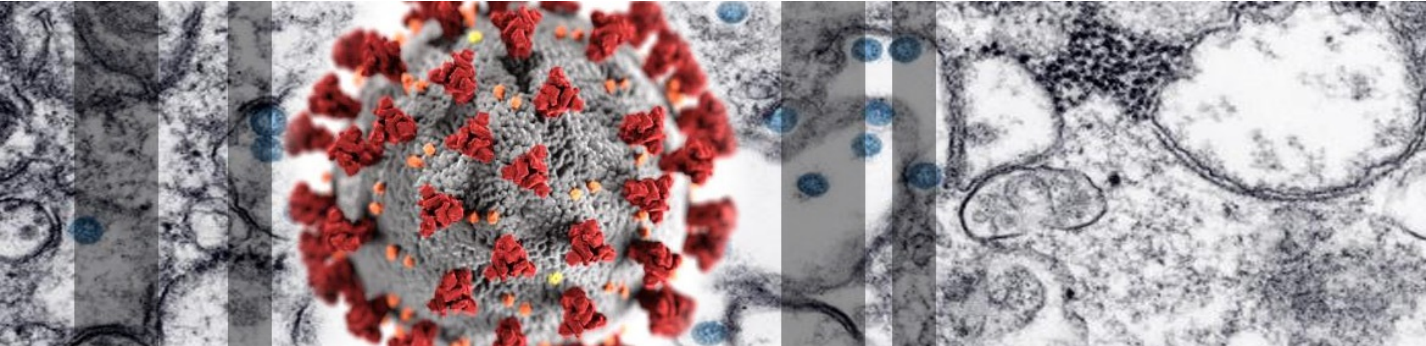
New Hampshire Department of Health and Human ServicesCOVID-19

- ☐ [Home](#)
- ☐ [Resources & Guidance](#)Resources & Guidance

- [Residents](#)
- [Healthcare Providers](#)
- [Schools](#)
- [Parents](#)
- [Businesses](#)
- [Other Guidance](#)
- [Volunteers](#)

- ☐ [FAQs](#)
- ☐ [News](#)News
 - [Updates](#)
 - [Weekly Summary Reports](#)
 - [Press Releases](#)
 - [Emergency Orders](#)
 - [Public Notices](#)

- ☐ [DHHS Website](#)



Novel Coronavirus 2019 (COVID-19)

All Information on the Coronavirus COVID-19 in New Hampshire

**MASK FOR BUSINESSES
REQUEST FORM**

Emergency Order #17 [Essential Business List](#) 



Have questions about COVID-19?

Call 2-1-1

Phone dial: 1-866-444-4211

TTY: 603-634-3388

Federal/State Resources

- [COVID-19 The Future of the Epidemic in NH](#) 
- [NH DHHS Bureau of Infectious Disease Control](#)
- [NH DOJ COVID-19 Scam Alerts](#)
- [CDC Coronavirus \(COVID-19\)](#)
- [World Health Organization - Coronavirus](#)
- [Civil Rights, HIPAA, and COVID-19](#) 
- [CDC-ASL: 10 Things You Can do to Manage COVID-19 at Home](#)
- [American Sign Language Videos](#)

[COVID-19 Weekly Summary Reports](#) *(New)*

[Proper Use of Cloth Face Coverings](#)

New Hampshire 2019 Novel Coronavirus (COVID-19) Summary Report

(data updated as of May 2, 2020, 9:00 AM)

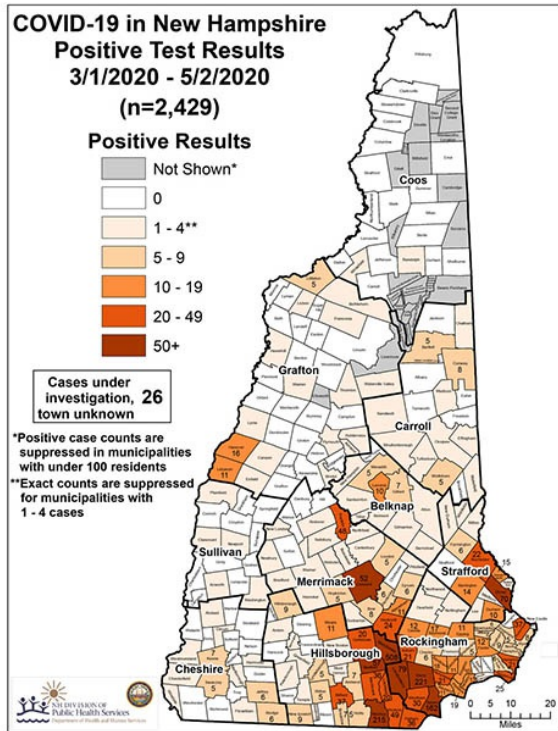
Number of Persons with COVID-19¹	2,429
Recovered	1,017 (46%)
Deaths Attributed to COVID-19	84 (3%)
Total Current COVID-19 Cases	1,238
Persons Who Have Been Hospitalized for COVID-19	277 (11%)
Current Hospitalizations²	103
Persons Tested Negative at Selected Laboratories³	25,964
Persons with Specimens Submitted to NH PHL	10,097
Persons with Test Pending at NH PHL⁴	220
Persons Being Monitored in NH (approximate point in time)	2,800

¹ Includes specimens presumptive-positive at any laboratory and those confirmed by CDC confirmatory testing.

² Number of patients currently hospitalized with COVID-19 as reported by hospitals.

³ Includes specimens tested at the NH Public Health Laboratories (PHL), LabCorp, Quest, Dartmouth-Hitchcock Medical Center, and those sent to CDC prior to NH PHL testing capacity.

⁴ Includes specimens received and awaiting testing at NH PHL. Does not include tests pending at commercial laboratories.




Cases by County	
County	Cases
Belknap	38
Carroll	32
Cheshire	40
Coos	2
Grafton	3
Hillsborough - Other	335
Hillsborough - Manchester	508
Hillsborough - Nashua	215
Merrimack	119
Rockingham	828
Strafford	149
Sullivan	12
Unknown	26
Grand Total	2,429

- [Crisis Standards of Care State Disaster Medical Advisory Committee](#)
- [Explanation of Public Health Monitoring and Movement Restriction Terms](#) 
- [Emergency Responders Unprotected Exposure Guidance](#) 

Social Media

- [DHHS Facebook](#) 
- [DHHS Twitter](#) 
- [Public Health Facebook](#) 
- [Public Health Twitter](#) 

 Portable Document Format (.pdf). Visit nh.gov for a list of [free .pdf readers](#) for a variety of operating systems.

New Hampshire Department of Health and Human Services
129 Pleasant Street | Concord, NH | 03301-3852

[NH.gov](#) | [privacy policy](#) | [accessibility policy](#) | [webmaster](#) | [DHHS Non-Discrimination Policy](#)
copyright . State of New Hampshire