

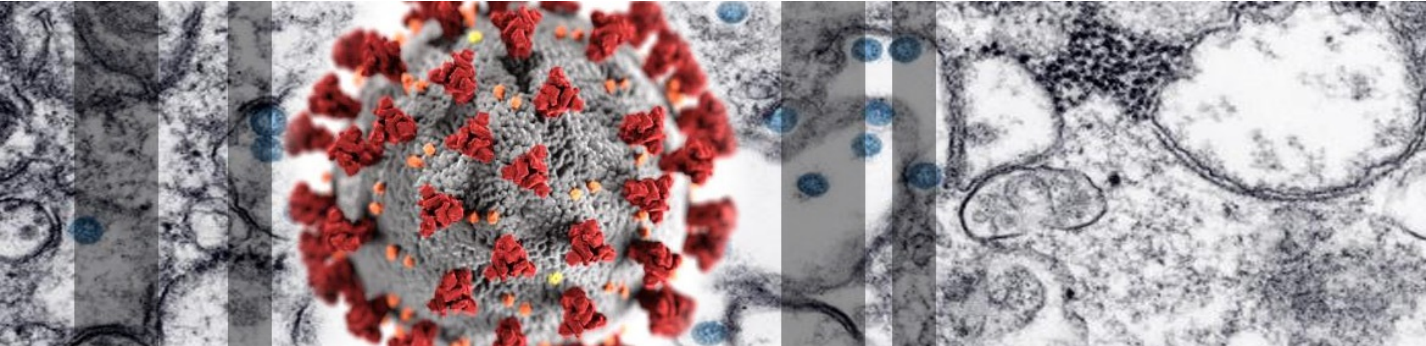
New Hampshire Department of Health and Human ServicesCOVID-19

- ☐ [Home](#)
- ☐ [Resources & Guidance](#)Resources & Guidance

- [Residents](#)
- [Healthcare Providers](#)
- [Schools](#)
- [Parents](#)
- [Businesses](#)
- [Other Guidance](#)
- [Volunteers](#)

- ☐ [FAQs](#)
- ☐ [News](#)News
 - [Updates](#)
 - [Weekly Summary Reports](#)
 - [Press Releases](#)
 - [Emergency Orders](#)
 - [Public Notices](#)

- ☐ [DHHS Website](#)



Novel Coronavirus 2019 (COVID-19)

All Information on the Coronavirus COVID-19 in New Hampshire

[COVID Testing
Registration Form](#)
[Masks for Businesses
Request Form](#)

Emergency Order #17 [Essential Business List](#) 



Have questions about COVID-19?

Call 2-1-1

Phone dial: 1-866-444-4211

TTY: 603-634-3388

Federal/State Resources

- [COVID-19 The Future of the Epidemic in NH](#) 
- [NH DHHS Bureau of Infectious Disease Control](#)
- [NH DOJ COVID-19 Scam Alerts](#)
- [CDC Coronavirus \(COVID-19\)](#)
- [World Health Organization - Coronavirus](#)
- [Civil Rights, HIPAA, and COVID-19](#) 
- [CDC-ASL: 10 Things You Can do to Manage COVID-19 at Home](#)
- [American Sign Language Videos](#)

[COVID-19 Weekly Summary Reports](#) *(New)*

[Proper Use of Cloth Face Coverings](#)

New Hampshire 2019 Novel Coronavirus (COVID-19) Summary Report

(data updated as of May 5, 2020, 9:00 AM)

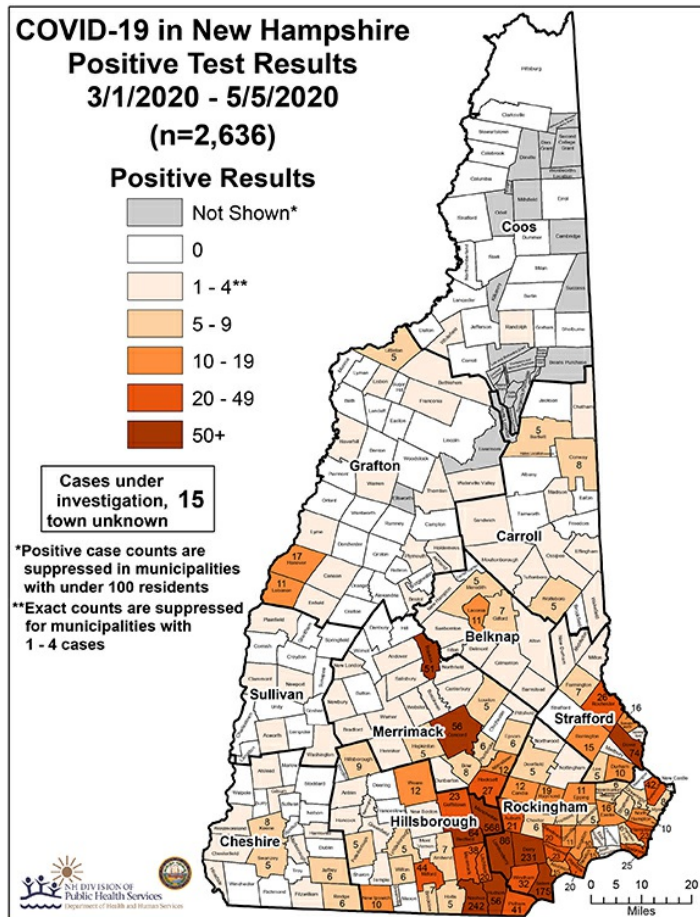
| | |
|---|-------------|
| Number of Persons with COVID-19¹ | 2,636 |
| Recovered | 1,105 (42%) |
| Deaths Attributed to COVID-19 | 92 (4%) |
| Total Current COVID-19 Cases | 1,439 |
| Persons Who Have Been Hospitalized for COVID-19 | 295 (11%) |
| Current Hospitalizations² | 115 |
| Persons Tested Negative at Selected Laboratories³ | 25,097 |
| Persons with Specimens Submitted to NH PHL | 10,619 |
| Persons with Test Pending at NH PHL⁴ | 79 |
| Persons Being Monitored in NH (approximate point in time) | 2,875 |

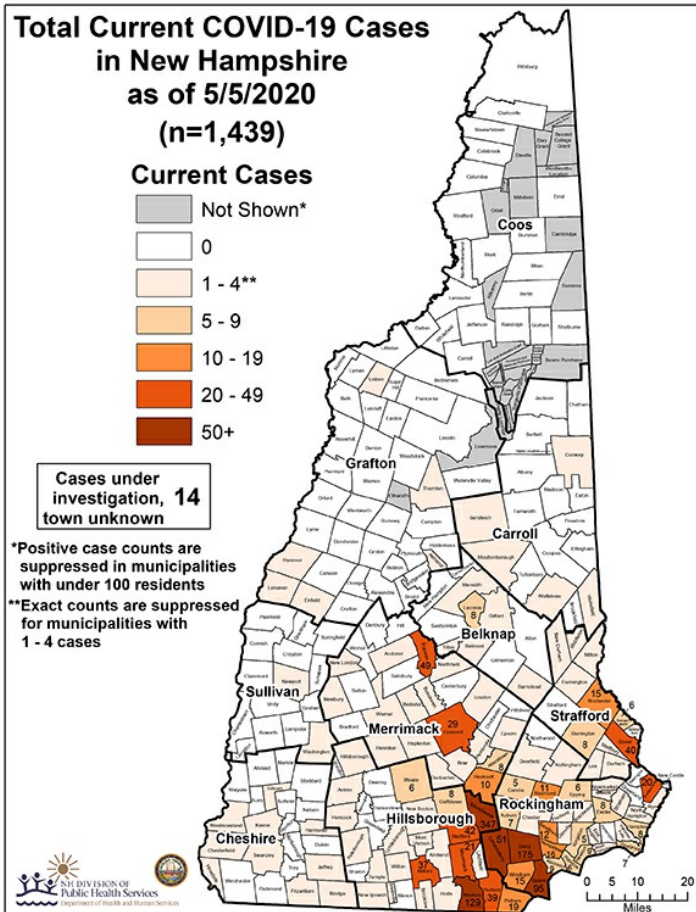
¹ Includes specimens presumptive-positive at any laboratory and those confirmed by CDC confirmatory testing.

² Number of patients currently hospitalized with COVID-19 as reported by hospitals.

³ Includes specimens tested at the NH Public Health Laboratories (PHL), LabCorp, Quest, Dartmouth-Hitchcock Medical Center, and those sent to CDC prior to NH PHL testing capacity.

⁴ Includes specimens received and awaiting testing at NH PHL. Does not include tests pending at commercial laboratories.






Cases by County

| County | Cases |
|---------------------------|--------------|
| Belknap | 40 |
| Carroll | 34 |
| Cheshire | 41 |
| Coos | 2 |
| Grafton | 54 |
| Hillsborough - Other | 371 |
| Hillsborough - Manchester | 568 |
| Hillsborough - Nashua | 242 |
| Merrimack | 206 |
| Rockingham | 888 |
| Strafford | 163 |
| Sullivan | 12 |
| Unknown | 15 |
| Grand Total | 2,636 |

- [Crisis Standards of Care State Disaster Medical Advisory Committee](#)
- [Explanation of Public Health Monitoring and Movement Restriction Terms](#) PDF
- [Emergency Responders Unprotected Exposure Guidance](#) PDF

Social Media

- [DHHS Facebook](#) 
- [DHHS Twitter](#) 
- [Public Health Facebook](#) 
- [Public Health Twitter](#) 

 Portable Document Format (.pdf). Visit nh.gov for a list of [free .pdf readers](#) for a variety of operating systems.

New Hampshire Department of Health and Human Services
 129 Pleasant Street | Concord, NH | 03301-3852

NH.gov | [privacy policy](#) | [accessibility policy](#) | [webmaster](#) | [DHHS Non-Discrimination Policy](#)

