

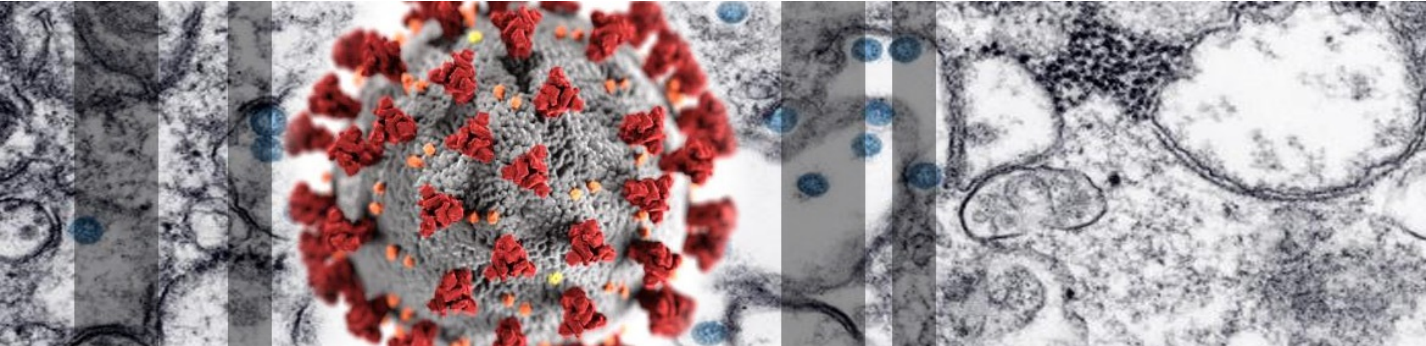
New Hampshire Department of Health and Human ServicesCOVID-19

- ☐ [Home](#)
- ☐ [Resources & Guidance](#)Resources & Guidance

- [Residents](#)
- [Healthcare Providers](#)
- [Schools](#)
- [Parents](#)
- [Businesses](#)
- [Other Guidance](#)
- [Volunteers](#)

- ☐ [FAQs](#)
- ☐ [News](#)News
 - [Updates](#)
 - [Weekly Summary Reports](#)
 - [Press Releases](#)
 - [Emergency Orders](#)
 - [Public Notices](#)

- ☐ [DHHS Website](#)



Novel Coronavirus 2019 (COVID-19)

All Information on the Coronavirus COVID-19 in New Hampshire

[COVID Testing
Registration Form](#)
[Masks for Businesses
Request Form](#)

Emergency Order #17 [Essential Business List](#) 



Have questions about COVID-19?

Call 2-1-1

Phone dial: 1-866-444-4211

TTY: 603-634-3388

Federal/State Resources

- [COVID-19 The Future of the Epidemic in NH](#) 
- [NH DHHS Bureau of Infectious Disease Control](#)
- [NH DOJ COVID-19 Scam Alerts](#)
- [CDC Coronavirus \(COVID-19\)](#)
- [World Health Organization - Coronavirus](#)
- [Civil Rights, HIPAA, and COVID-19](#) 
- [CDC-ASL: 10 Things You Can do to Manage COVID-19 at Home](#)
- [American Sign Language Videos](#)

[COVID-19 Weekly Summary Reports](#) *(New)*

[Proper Use of Cloth Face Coverings](#)

New Hampshire 2019 Novel Coronavirus (COVID-19) Summary Report

(data updated as of May 12, 2020, 9:00 AM)

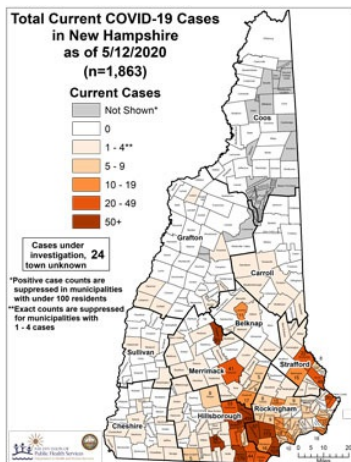
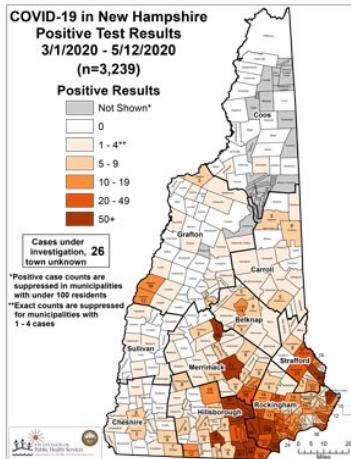
Number of Persons with COVID-19¹	3,239
Recovered	1,234 (38%)
Deaths Attributed to COVID-19	142 (4%)
Total Current COVID-19 Cases	1,863
Persons Who Have Been Hospitalized for COVID-19	319 (10%)
Current Hospitalizations²	121
Persons Tested Negative at Selected Laboratories³	33,977
Persons with Specimens Submitted to NH PHL	12,969
Persons with Test Pending at NH PHL⁴	51
Persons Being Monitored in NH (approximate point in time)	3,325

¹ Includes specimens presumptive-positive at any laboratory and those confirmed by CDC confirmatory testing.

² Number of patients currently hospitalized with COVID-19 as reported by hospitals.

³ Includes specimens tested at the NH Public Health Laboratories (PHL), LabCorp, Quest, Dartmouth-Hitchcock Medical Center, and those sent to CDC prior to NH PHL testing capacity.

⁴ Includes specimens received and awaiting testing at NH PHL. Does not include tests pending at commercial laboratories.




Cases by County	
County	Cases
Belknap	47
Carroll	37
Cheshire	44
Coos	2
Grafton	57
Hillsborough - Other	518
Hillsborough - Manchester	732
Hillsborough - Nashua	301
Merrimack	252
Rockingham	1010
Strafford	199
Sullivan	14
County TBD	26
Grand Total	3,239

- [Crisis Standards of Care State Disaster Medical Advisory Committee](#)
- [Explanation of Public Health Monitoring and Movement Restriction Terms](#) 
- [Emergency Responders Unprotected Exposure Guidance](#) 

Social Media

- [DHHS Facebook](#) 
- [DHHS Twitter](#) 
- [Public Health Facebook](#) 
- [Public Health Twitter](#) 

 Portable Document Format (.pdf). Visit nh.gov for a list of [free .pdf readers](#) for a variety of operating systems.

New Hampshire Department of Health and Human Services
129 Pleasant Street | Concord, NH | 03301-3852

[NH.gov](#) | [privacy policy](#) | [accessibility policy](#) | [webmaster](#) | [DHHS Non-Discrimination Policy](#)
copyright . State of New Hampshire