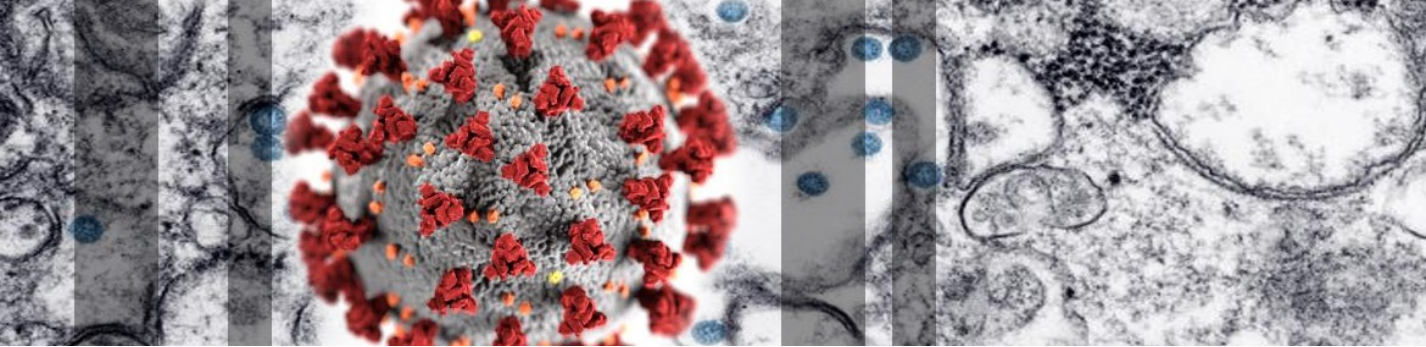


New Hampshire Department of Health and Human ServicesCOVID-19

- ☐ [Home](#)
- ☐ [Resources & Guidance](#)Resources & Guidance
 - [Testing](#)
 - [Residents](#)
 - [Healthcare Providers](#)
 - [Schools](#)
 - [Parents](#)
 - [Businesses](#)
 - [Other Guidance](#)
 - [Volunteers](#)
- ☐ [FAQs](#)
- ☐ [News](#)News
 - [Updates](#)
 - [Weekly Summary Reports](#)
 - [Press Releases](#)
 - [Emergency Orders](#)
 - [Public Notices](#)
- ☐ [DHHS Website](#)



Novel Coronavirus 2019 (COVID-19)

All Information on the Coronavirus COVID-19 in New Hampshire

[Stay At Home 2.0](#)
[COVID Testing](#)
[Registration Form](#)



Have questions about COVID-19?

Call 2-1-1

Phone dial: 1-866-444-4211

TTY: 603-634-3388

Federal/State Resources

- [COVID-19 The Future of the Epidemic in NH](#) 
- [NH DHHS Bureau of Infectious Disease Control](#)
- [NH DOJ COVID-19 Scam Alerts](#)
- [CDC Coronavirus \(COVID-19\)](#)
- [World Health Organization - Coronavirus](#)
- [Civil Rights, HIPAA, and COVID-19](#) 
- [CDC-ASL: 10 Things You Can do to Manage COVID-19 at Home](#)
- [American Sign Language Videos](#)

[COVID-19 Weekly Summary Reports](#) *(New)*

[Proper Use of Cloth Face Coverings](#)

New Hampshire 2019 Novel Coronavirus (COVID-19) Summary Report

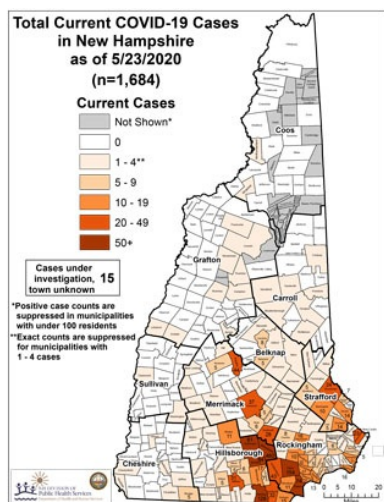
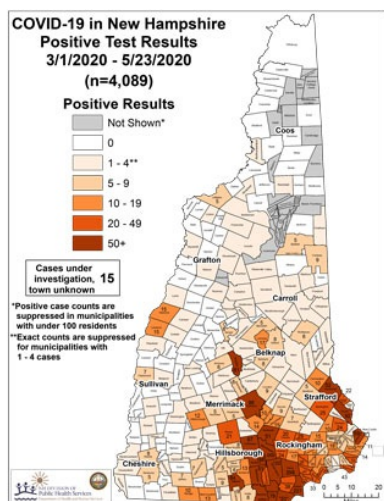
(data updated as of May 23, 2020, 9:00 AM)

Number of Persons with COVID-19 ¹	4,089
Recovered	2,197 (54%)
Deaths Attributed to COVID-19	208 (5%)
Total Current COVID-19 Cases	1,684
Persons Who Have Been Hospitalized for COVID-19	419 (10%)
Current Hospitalizations	93
Total Persons Tested at Selected Laboratories, Polymerase Chain Reaction (PCR) ²	59,539
Total Persons Tested at Selected Laboratories, Antibody Laboratory Tests ²	9,062
Persons with Specimens Submitted to NH PHL	20,729
Persons with Test Pending at NH PHL ³	1,844
Persons Being Monitored in NH (approximate point in time)	4,100

¹ Includes specimens positive at any laboratory and those confirmed by CDC confirmatory testing.

² Includes specimens tested at the NH Public Health Laboratories (PHL), LabCorp, Quest, Dartmouth-Hitchcock Medical Center, and those sent to CDC prior to NH PHL testing capacity.

³ Includes specimens received and awaiting testing at NH PHL. Does not include tests pending at commercial laboratories.




Cases by County

County	Cases
Belknap	55
Carroll	46
Cheshire	51
Coos	4
Grafton	69
Hillsborough - Other	679
Hillsborough - Manchester	1,000
Hillsborough - Nashua	370
Merrimack	312
Rockingham	1,218
Strafford	253
Sullivan	17
County TBD	15
Grand Total	4,089

- [Crisis Standards of Care State Disaster Medical Advisory Committee](#)
- [Explanation of Public Health Monitoring and Movement Restriction Terms](#) 
- [Emergency Responders Unprotected Exposure Guidance](#) 

Social Media

- [DHHS Facebook](#) 
- [DHHS Twitter](#) 
- [Public Health Facebook](#) 
- [Public Health Twitter](#) 

 Portable Document Format (.pdf). Visit nh.gov for a list of [free .pdf readers](#) for a variety of operating systems.

New Hampshire Department of Health and Human Services
129 Pleasant Street | Concord, NH | 03301-3852

[NH.gov](#) | [privacy policy](#) | [accessibility policy](#) | [webmaster](#) | [DHHS Non-Discrimination Policy](#)

copyright . State of New Hampshire