

[Skip to Main Content](#)



New Hampshire Department of Health and Human ServicesCOVID-19

☐ [Home](#)

☐ [Resources & Guidance](#)Resources & Guidance

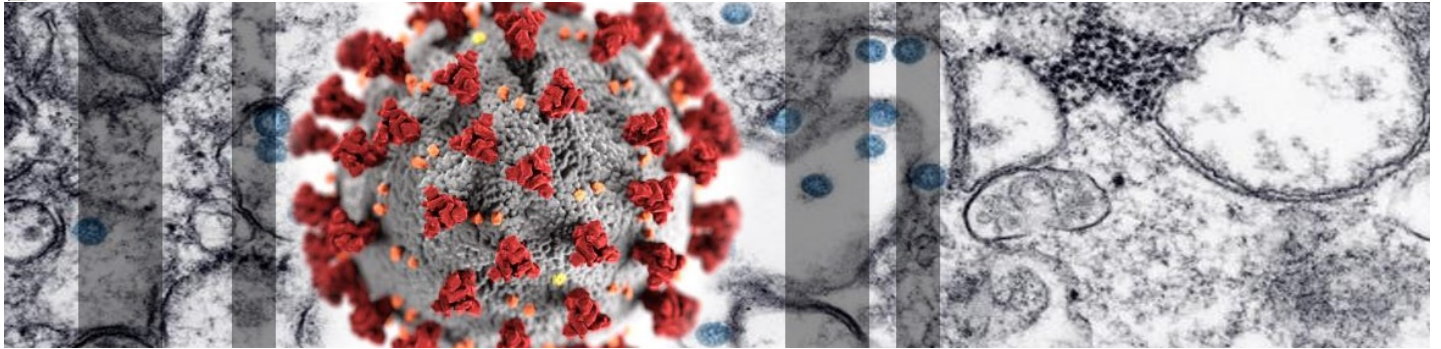
- [Testing](#)
- [Residents](#)
- [Healthcare Providers](#)
- [Long Term Care Facilities](#)
- [Schools](#)
- [Parents](#)
- [Businesses](#)
- [Other Guidance](#)
- [Volunteers](#)

☐ [FAQs](#)

☐ [News](#)News

- [Updates](#)
- [Weekly Summary Reports](#)
- [Press Releases](#)
- [Emergency Orders](#)
- [Public Notices](#)

☐ [DHHS Website](#)



Novel Coronavirus 2019 (COVID-19)

All Information on the Coronavirus COVID-19 in New Hampshire

[Safer at Home](#)
[COVID Testing](#)
[Registration Form](#)



Have questions about COVID-19?

Call 2-1-1

Phone dial: 1-866-444-4211

TTY: 603-634-3388

Federal/State Resources

- [COVID-19 The Future of the Epidemic in NH](#) 
- [NH DHHS Bureau of Infectious Disease Control](#)
- [NH DOJ COVID-19 Scam Alerts](#)
- [CDC Coronavirus \(COVID-19\)](#)
- [World Health Organization - Coronavirus](#)
- [Civil Rights, HIPAA, and COVID-19](#) 
- [CDC-ASL: 10 Things You Can do to Manage COVID-19 at Home](#)
- [American Sign Language Videos](#)

[COVID-19 Summary Dashboard](#)

[COVID-19 Weekly Summary Reports](#) *(archive)*

[Proper Use of Cloth Face Coverings](#)

New Hampshire 2019 Novel Coronavirus (COVID-19) Summary Report

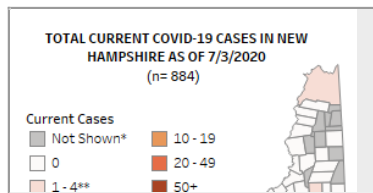
(data updated as of July 3, 2020, 9:00 AM)

Number of Persons with COVID-19 ¹	5,857
Recovered	4,597 (78%)
Deaths Attributed to COVID-19	376 (6%)
Total Current COVID-19 Cases	884
Persons Who Have Been Hospitalized for COVID-19	569 (10%)
Current Hospitalizations	27
Total Persons Tested at Selected Laboratories, Polymerase Chain Reaction (PCR) ²	123,749
Total Persons Tested at Selected Laboratories, Antibody Laboratory Tests ²	20,057
Persons with Specimens Submitted to NH PHL	32,359
Persons with Test Pending at NH PHL ³	727
Persons Being Monitored in NH (approximate point in time)	3,475

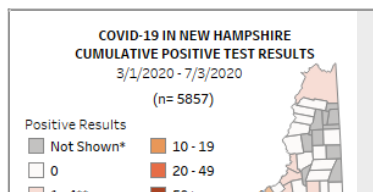
¹ Includes specimens positive at any laboratory and those confirmed by CDC confirmatory testing.

² Includes specimens tested at the NH Public Health Laboratories (PHL), LabCorp, Quest, Dartmouth-Hitchcock Medical Center, and those sent to CDC prior to NH PHL testing capacity.

³ Includes specimens received and awaiting testing at NH PHL. Does not include tests pending at commercial laboratories.



[Active Cases Dashboard](#) | [Active Cases Map](#) 




[Cumulative Cases Dashboard](#) | [Cumulative Cases Map](#) 

- [Governor's COVID-19 Equity Response Team](#)
- [Crisis Standards of Care State Disaster Medical Advisory Committee](#)
- [Explanation of Public Health Monitoring and Movement Restriction Terms](#) 
- [Emergency Responders Unprotected Exposure Guidance](#) 

Social Media

- [DHHS Facebook](#) 
- [DHHS Twitter](#) 
- [Public Health Facebook](#) 
- [Public Health Twitter](#) 

 Portable Document Format (.pdf). Visit nh.gov for a list of [free .pdf readers](#) for a variety of operating systems.

New Hampshire Department of Health and Human Services
129 Pleasant Street | Concord, NH | 03301-3852

[NH.gov](http://nh.gov) | [privacy policy](#) | [accessibility policy](#) | [webmaster](#) | [DHHS Non-Discrimination Policy](#)
copyright . State of New Hampshire