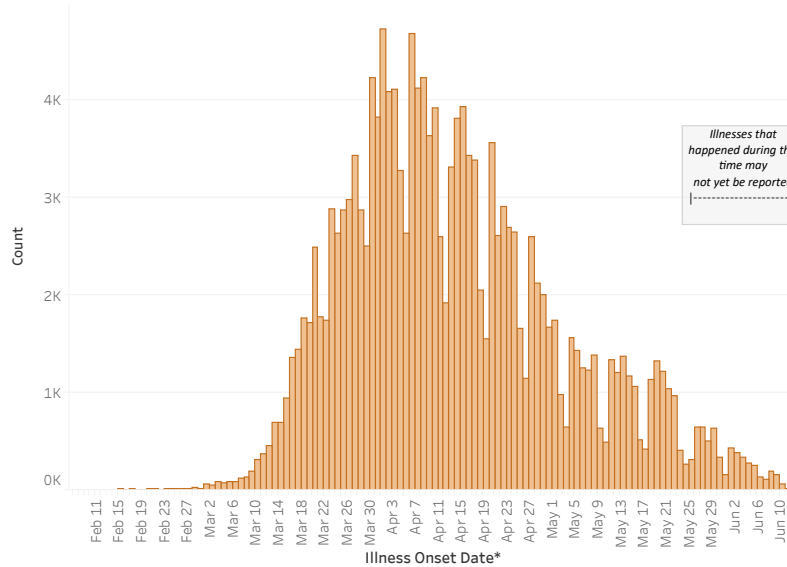


### Lab Confirmed Cases: All Positives

**166,164**

**Rate per 100,000: 1,890**



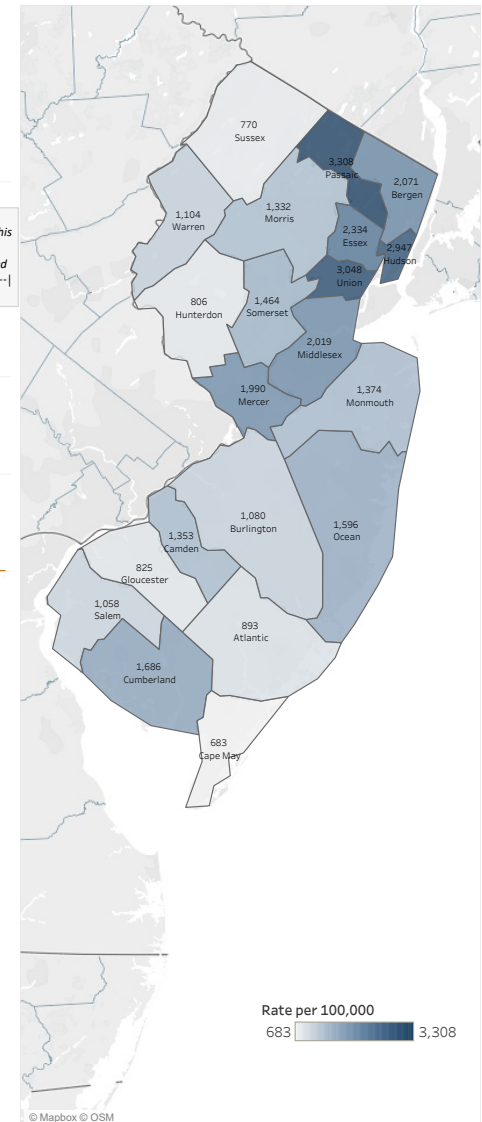
**Notable Dates:**

- March 4: Announcement of first NJ COVID-19 case
- March 6: Start of commercial lab testing
- March 9: EO 103, State of Emergency issued
- March 12: Cancellation of public gatherings >250
- March 16: EO 104, aggressive social distancing measures issued
- March 18: Schools closed; cessation of in-person instruction at institutions of higher education
- March 20: Start of mass-scale testing
- March 21: EO 107, statewide stay-at-home order, closure of non-essential retail
- May 2: Reopening of state parks and golf courses
- May 14: Reopening of non-essential construction and curbside pick up at non-essential businesses
- May 14: Reopening of beaches

\*If illness onset date unknown the date of specimen collection or the date of NJDOH notification is used, whichever is earlier.

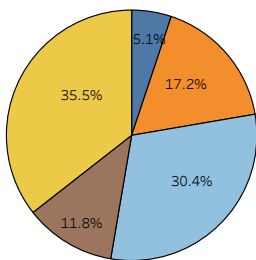
\*This dashboard shows laboratory confirmed COVID-19 positive cases.

Rate per 100,000 by County

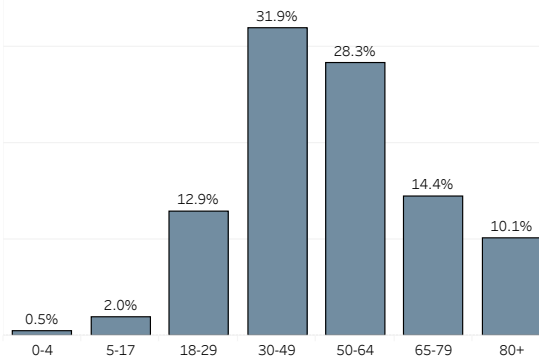


All Cases by Race/Ethnicity

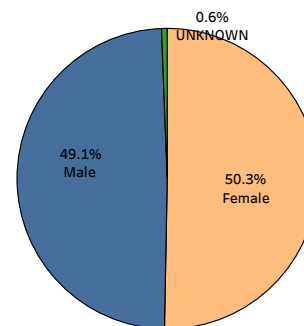
- ASIAN(NON-HISPANIC)
- BLACK(NON-HISPANIC)
- HISPANIC
- OTHER(NON-HISPANIC)
- WHITE(NON-HISPANIC)



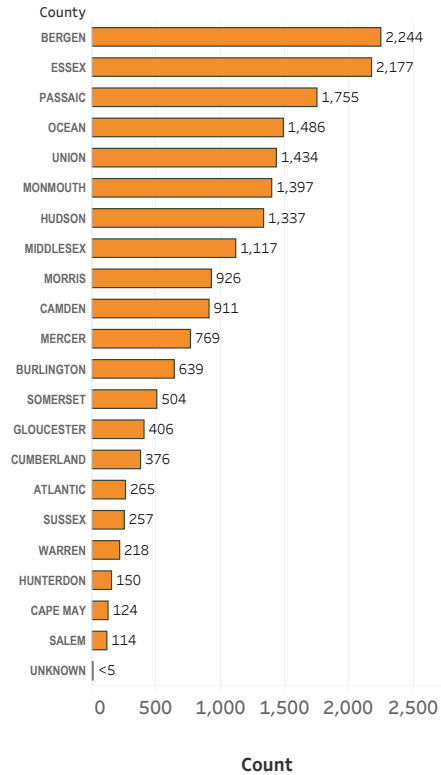
All Cases by Age Group



All Cases by Gender



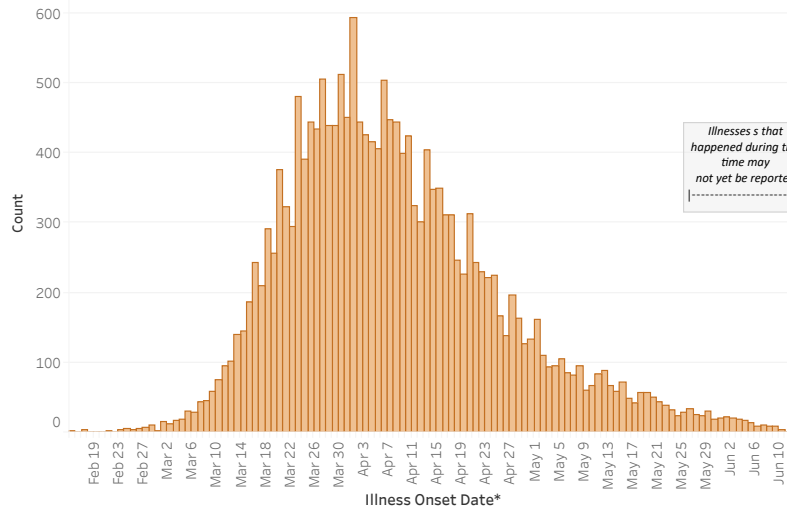
Rate per 100,000  
683 3,308



### Ever Hospitalized Cases

**18,607**

**Rate per 100,000: 212**



**Notable Dates:**

**March 4:** Announcement of first NJ COVID-19 case

**March 6:** Start of commercial lab testing

**March 9:** EO 103, State of Emergency issued

**March 12:** Cancellation of public gatherings >250

**March 16:** EO 104, aggressive social distancing measures issued

**March 18:** Schools closed; cessation of in-person instruction at institutions of higher education

**March 20:** Start of mass-scale testing

**March 21:** EO 107, statewide stay-at-home order, closure of non-essential retail

**May 2:** Reopening of state parks and golf courses

**May 14:** Reopening of non-essential construction and curbside pick up at non-essential businesses

**May 14:** Reopening of beaches

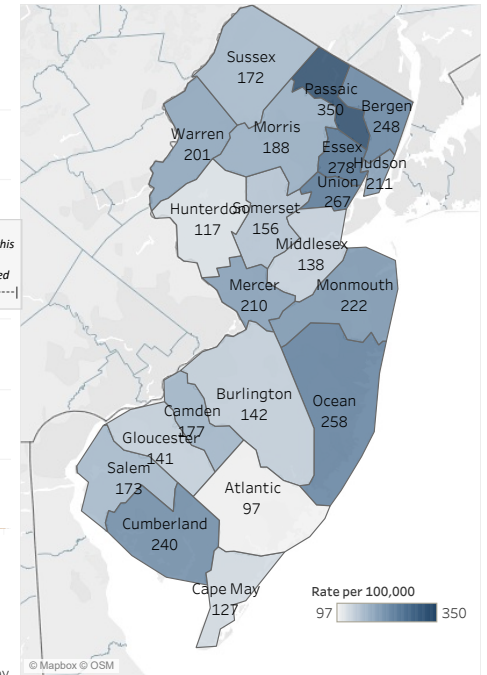
\*If illness onset date unknown the date of specimen collection or the date of NJDOH notification is used, whichever is earlier.

\*Due to the time required to investigate a case, the numbers may not match with other data sources (e.g. hospital survey or registry data).

\*Data shows cumulative number of laboratory confirmed cases who were ever hospitalized.

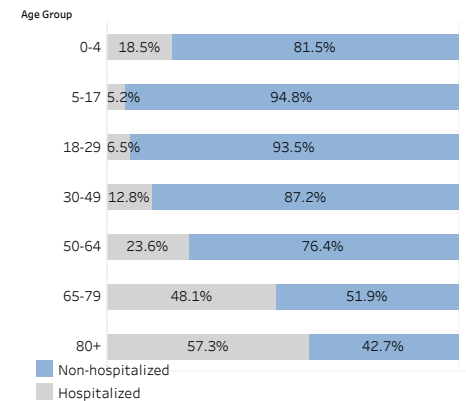
\*Information on persons ever hospitalized is obtained through public health investigation and may not match other data sources.

### Rate per 100,000 by County



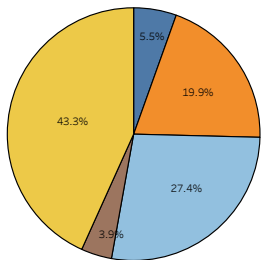
Rate per 100,000  
97 350

### Percentage of each age group who have been hospitalized

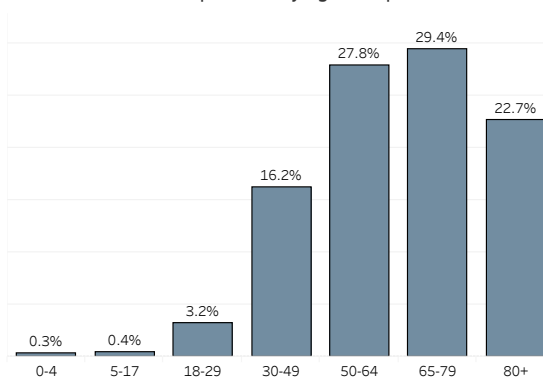


### Hospitalized by Race/Ethnicity

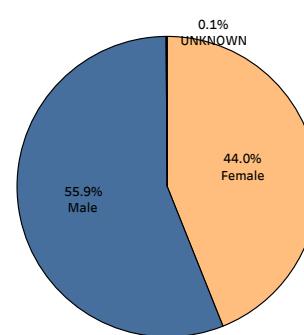
ASIAN(NON-HISPANIC) OTHER(NON-HISPANIC)  
BLACK(NON-HISPANIC) WHITE(NON-HISPANIC)  
HISPANIC

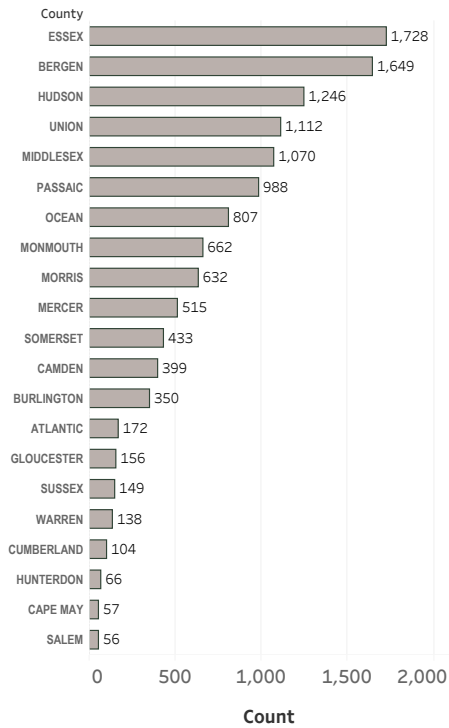


### Hospitalized by Age Group



### Hospitalized by Gender



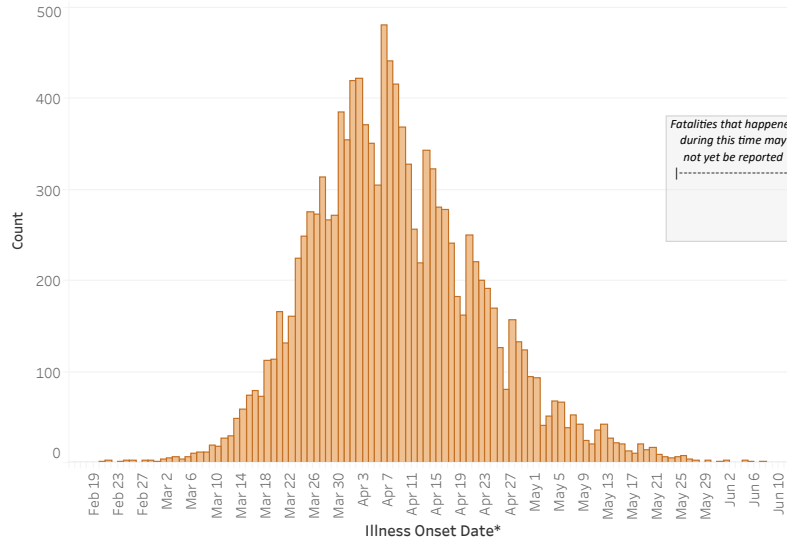


**Notable Dates:**  
**March 4:** Announcement of first NJ COVID-19 case  
**March 6:** Start of commercial lab testing  
**March 9:** EO 103, State of Emergency issued  
**March 12:** Cancellation of public gatherings >250  
**March 16:** EO 104, aggressive social distancing measures issued  
**March 18:** Schools closed; cessation of in-person instruction at institutions of higher education  
**March 20:** Start of mass-scale testing  
**March 21:** EO 107, statewide stay-at-home order, closure of non-essential retail  
**May 2:** Reopening of state parks and golf courses  
**May 14:** Reopening of non-essential construction and curbside pick up at non-essential businesses  
**May 22:** Reopening of beaches

### Lab Confirmed Cases: Deceased

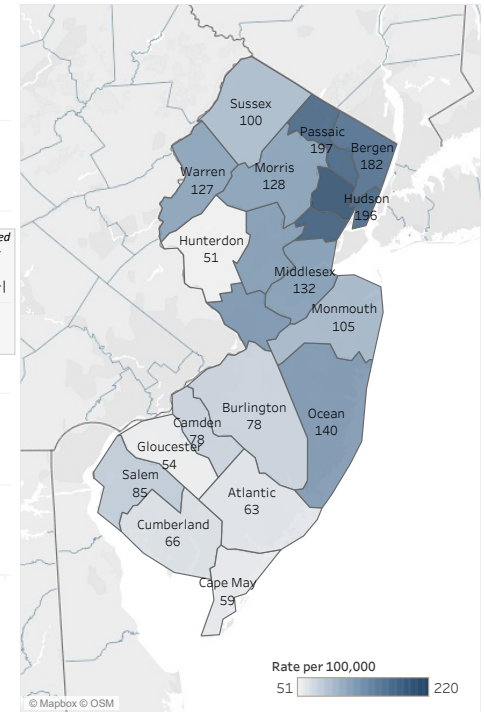
**12,489**

**Rate per 100,000: 142**

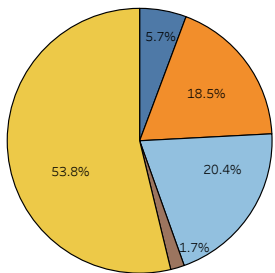


\*If illness onset date unknown the date of specimen collection or the date of NJDOH notification is used, whichever is earlier.  
 \*This dashboard shows persons with laboratory-confirmed COVID-19 who have died. Some reports may be delayed due to when death certificates are finalized.

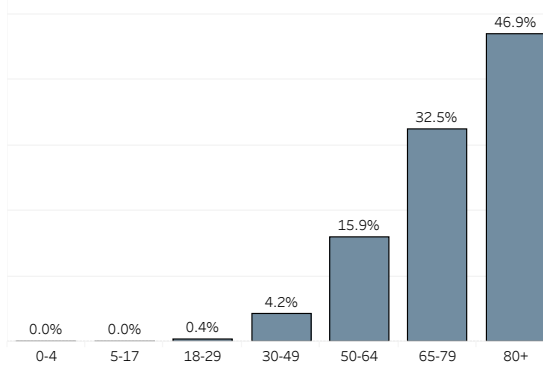
Rate per 100,000 by County



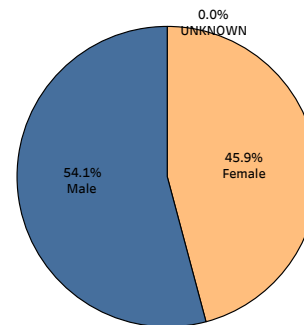
**Race/Ethnicity**  
 ■ ASIAN(NON-HISPANIC) ■ OTHER(NON-HISPANIC)  
 ■ BLACK(NON-HISPANIC) ■ WHITE(NON-HISPANIC)  
 ■ HISPANIC



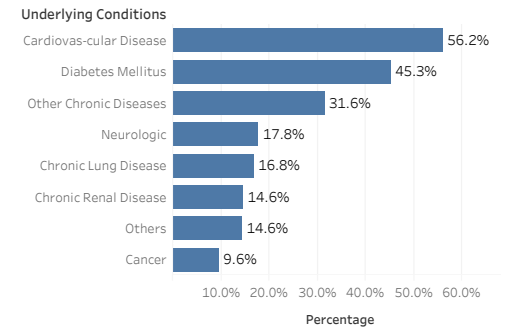
Deaths by Age Group



Deaths by Gender

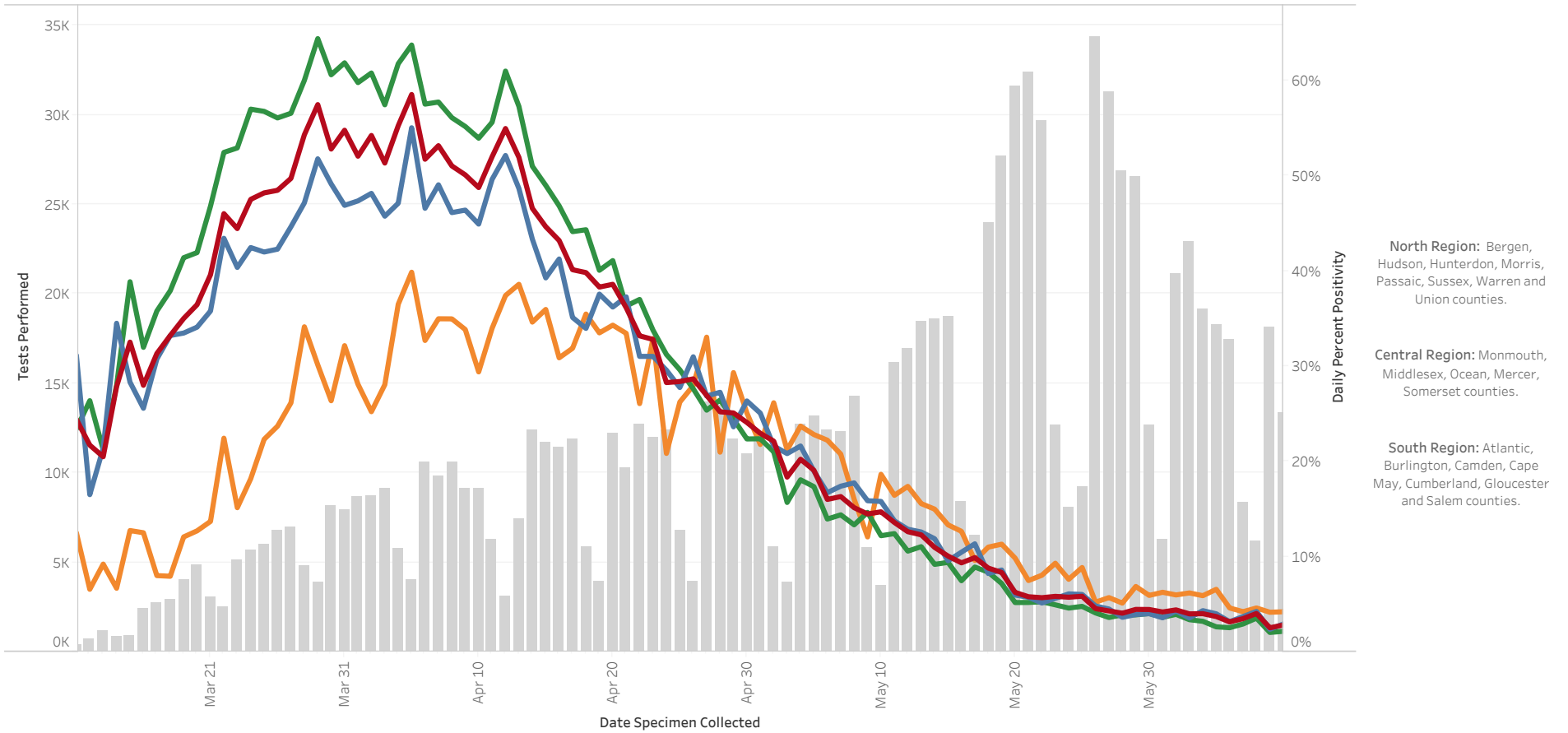


Underlying conditions for Lab-confirmed COVID-19 associated deaths



\*Other includes: mental, vision, speech, hearing and immunocompromised conditions.  
 Note: Each case may have multiple conditions; thus, the sum of all condition counts is greater than the total number of deaths.

Covid-19 Daily Percent Positivity Reported by All Labs by Region



\*\*The data are summarized based on specimen collection date using all PCR lab results.

■ NJ- Percent Positivity     
 ■ Central- Percent Positivity     
 ■ North-Percent Positivity     
 ■ South-Percent Positivity     
 ■ Total Tests-New Jersey

# New and Cumulative Total Number of COVID-19 Cases in New Jersey

