

Lab Confirmed Cases: All Positives

167,103

Rate per 100,000: 1,901

Notable Dates:

March 4: Announcement of first NJ COVID-19 case

March 6: Start of commercial lab testing

March 9: EO 103, State of Emergency issued

March 12: Cancellation of public gatherings >250

March 16: EO 104, aggressive social distancing measures issued

March 18: Schools closed; cessation of in-person instruction at institutions of higher education

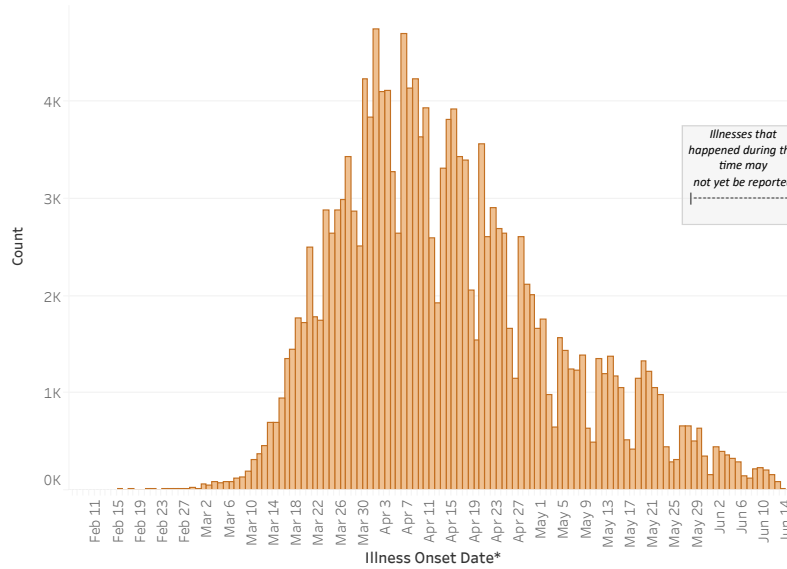
March 20: Start of mass-scale testing

March 21: EO 107, statewide stay-at-home order, closure of non-essential retail

May 2: Reopening of state parks and golf courses

May 14: Reopening of non-essential construction and curbside pick up at non-essential businesses

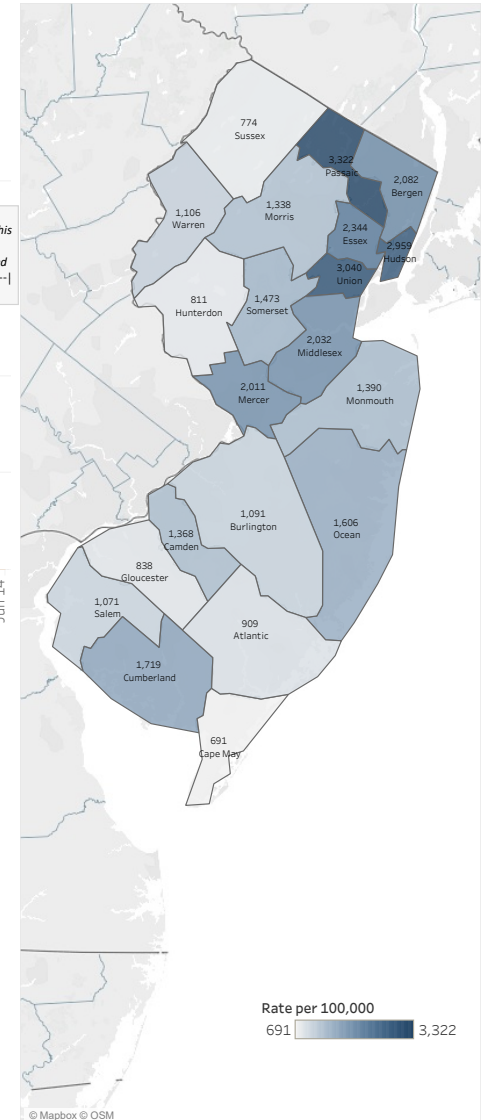
May 14: Reopening of beaches



*If illness onset date unknown the date of specimen collection or the date of NJDOH notification is used, whichever is earlier.

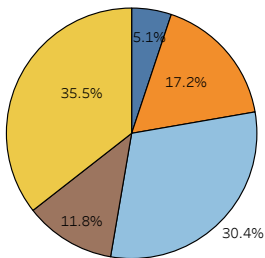
*This dashboard shows laboratory confirmed COVID-19 positive cases.

Rate per 100,000 by County

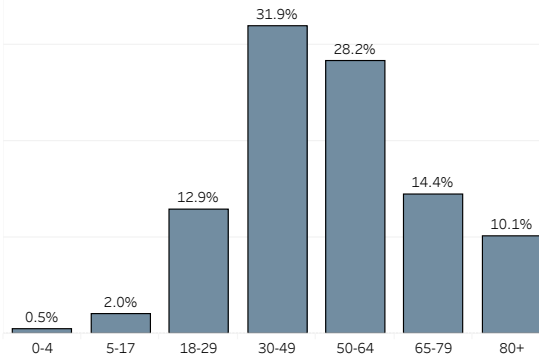


All Cases by Race/Ethnicity

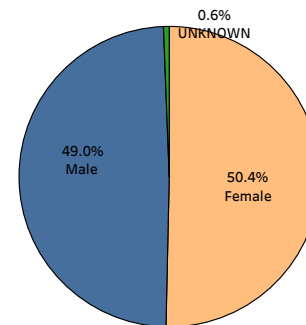
- ASIAN(NON-HISPANIC)
- BLACK(NON-HISPANIC)
- HISPANIC
- OTHER(NON-HISPANIC)
- WHITE(NON-HISPANIC)

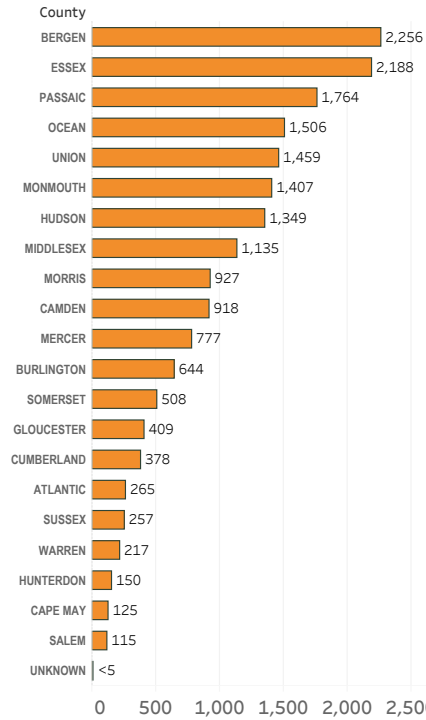


All Cases by Age Group



All Cases by Gender

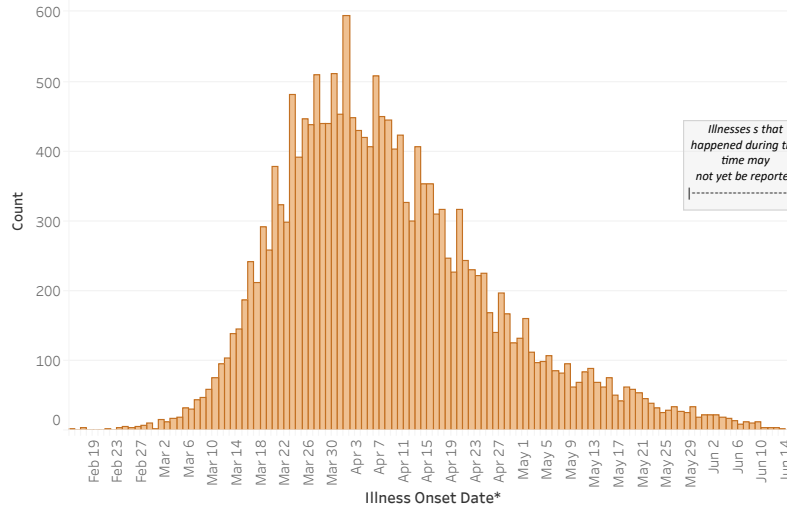




Ever Hospitalized Cases

18,755

Rate per 100,000: 213



Notable Dates:

March 4: Announcement of first NJ COVID-19 case

March 6: Start of commercial lab testing

March 9: EO 103, State of Emergency issued

March 12: Cancellation of public gatherings >250

March 16: EO 104, aggressive social distancing measures issued

March 18: Schools closed; cessation of in-person instruction at institutions of higher education

March 20: Start of mass-scale testing

March 21: EO 107, statewide stay-at-home order, closure of non-essential retail

May 2: Reopening of state parks and golf courses

May 14: Reopening of non-essential construction and curbside pick up at non-essential businesses

May 14: Reopening of beaches

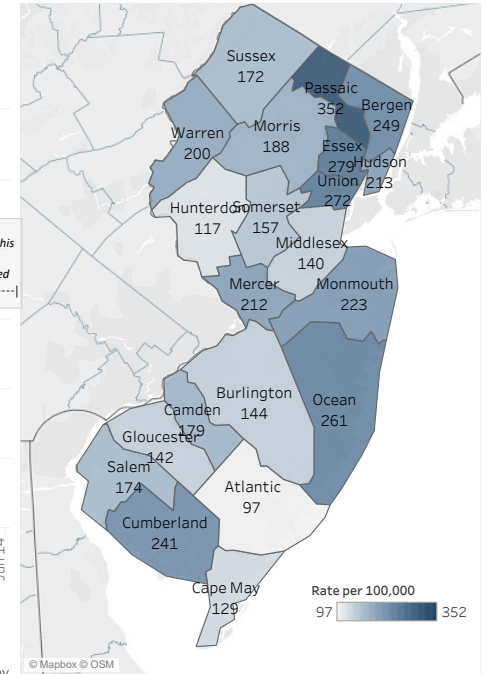
*If illness onset date unknown the date of specimen collection or the date of NJDOH notification is used, whichever is earlier.

*Due to the time required to investigate a case, the numbers may not match with other data sources (e.g. hospital survey or registry data).

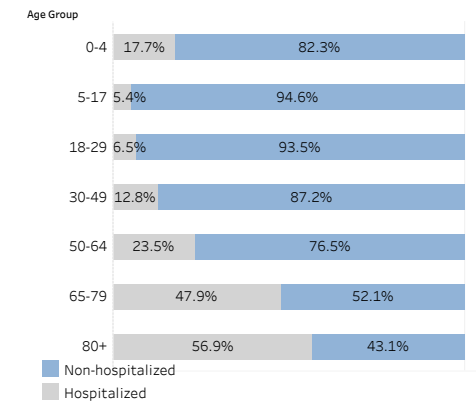
*Data shows cumulative number of laboratory confirmed cases who were ever hospitalized.

*Information on persons ever hospitalized is obtained through public health investigation and may not match other data sources.

Rate per 100,000 by County

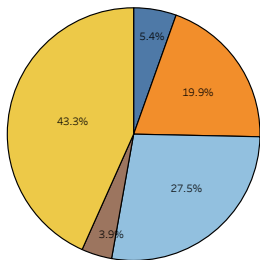


Percentage of each age group who have been hospitalized

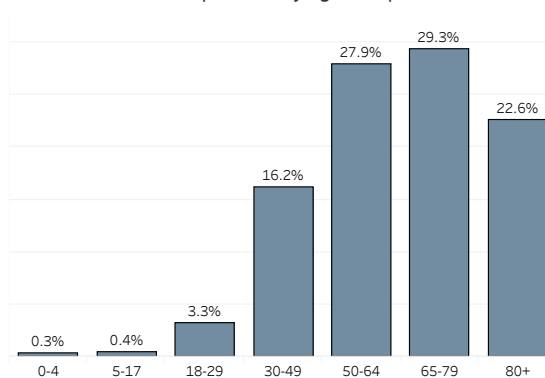


Hospitalized by Race/Ethnicity

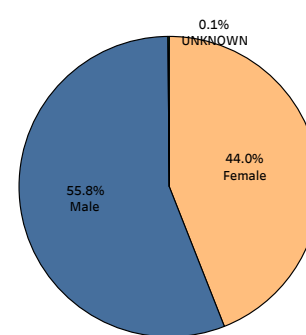
- ASIAN(NON-HISPANIC)
- BLACK(NON-HISPANIC)
- HISPANIC
- OTHER(NON-HISPANIC)
- WHITE(NON-HISPANIC)

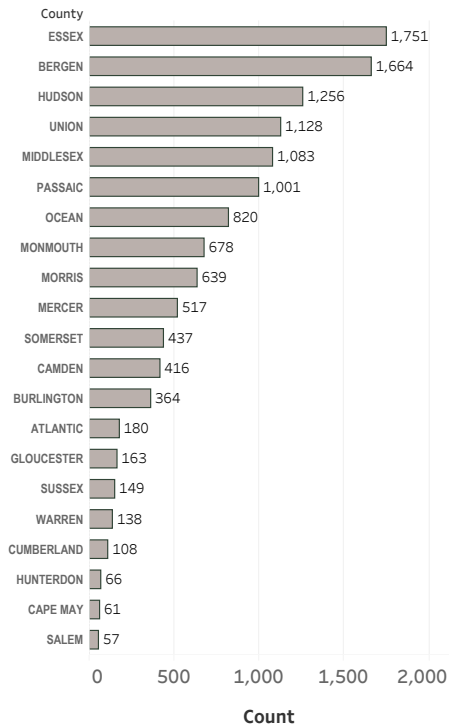


Hospitalized by Age Group



Hospitalized by Gender



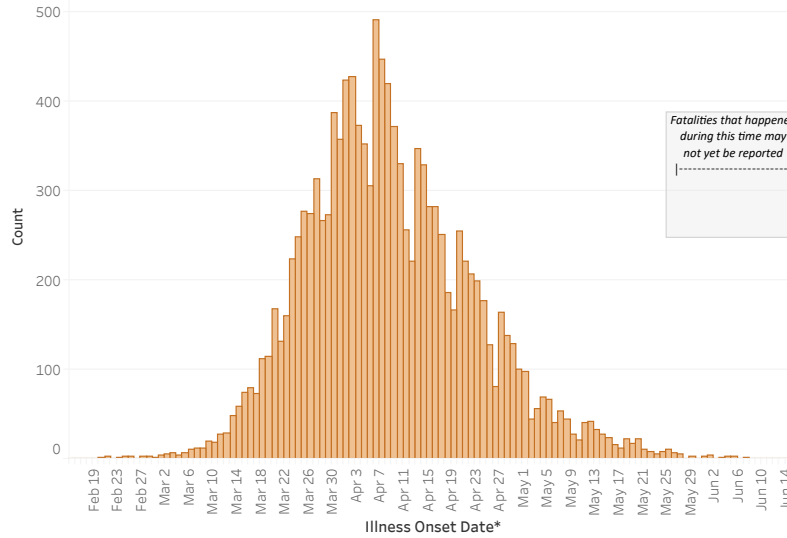


Notable Dates:
March 4: Announcement of first NJ COVID-19 case
March 6: Start of commercial lab testing
March 9: EO 103, State of Emergency issued
March 12: Cancellation of public gatherings >250
March 16: EO 104, aggressive social distancing measures issued
March 18: Schools closed; cessation of in-person instruction at institutions of higher education
March 20: Start of mass-scale testing
March 21: EO 107, statewide stay-at-home order, closure of non-essential retail
May 2: Reopening of state parks and golf courses
May 14: Reopening of non-essential construction and curbside pick up at non-essential businesses
May 22: Reopening of beaches

Lab Confirmed Cases: Deceased

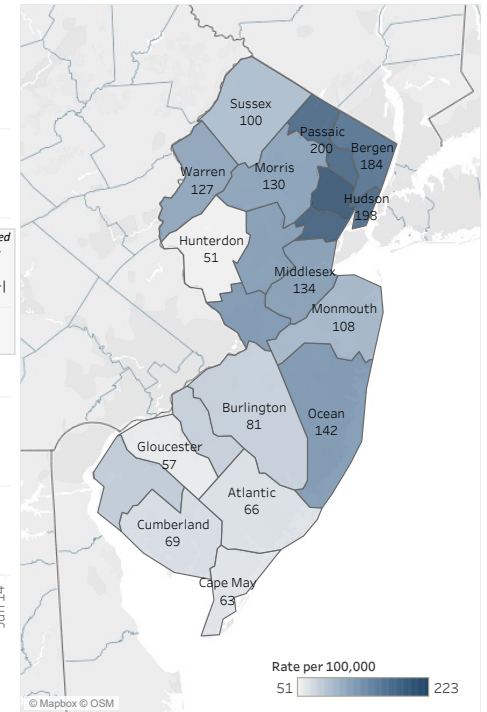
12,676

Rate per 100,000: 144



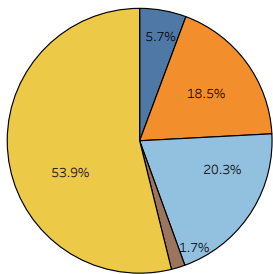
*If illness onset date unknown the date of specimen collection or the date of NJDOH notification is used, whichever is earlier.
 *This dashboard shows persons with laboratory-confirmed COVID-19 who have died. Some reports may be delayed due to when death certificates are finalized.

Rate per 100,000 by County

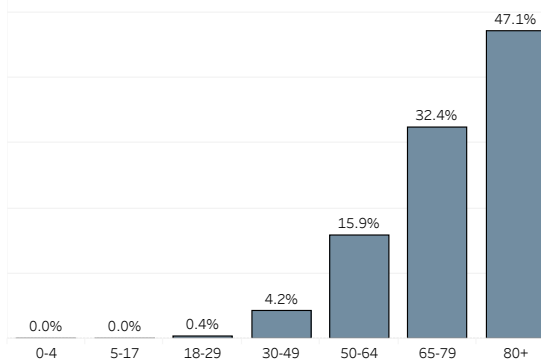


Race/Ethnicity

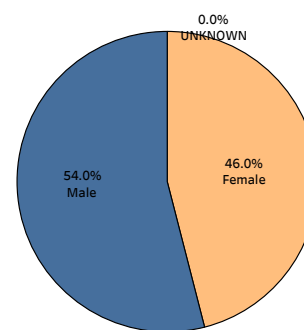
- ASIAN(NON-HISPANIC)
- BLACK(NON-HISPANIC)
- HISPANIC
- OTHER(NON-HISPANIC)
- WHITE(NON-HISPANIC)



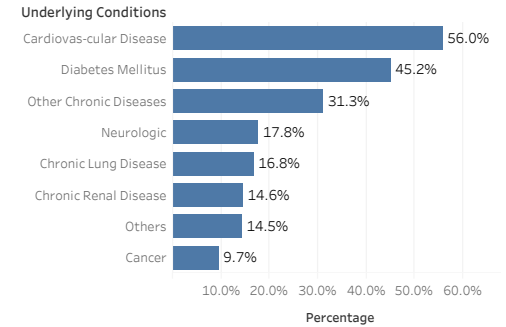
Deaths by Age Group



Deaths by Gender

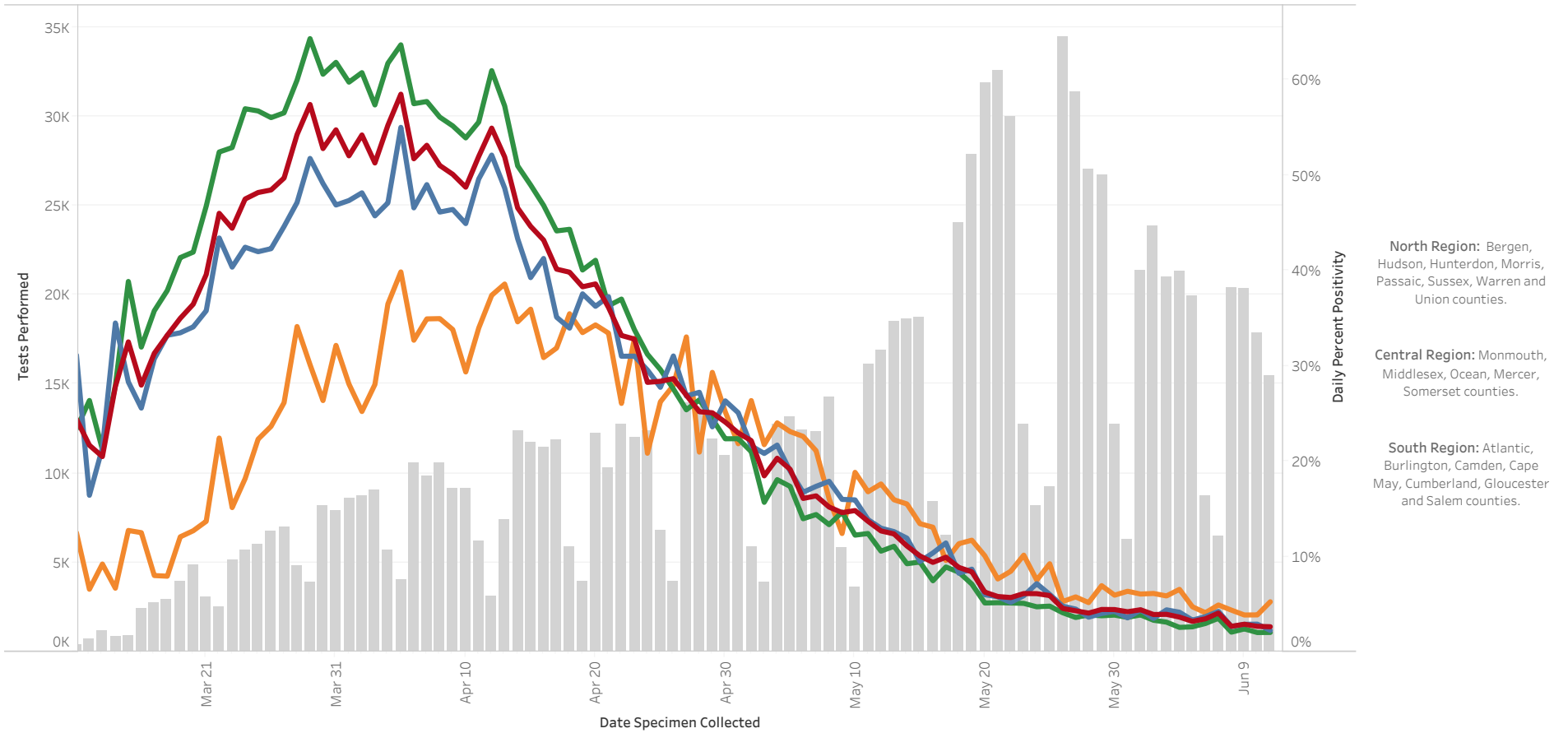


Underlying conditions for Lab-confirmed COVID-19 associated deaths



*Other includes: mental, vision, speech, hearing and immunocompromised conditions.
 Note: Each case may have multiple conditions; thus, the sum of all condition counts is greater than the total number of deaths.

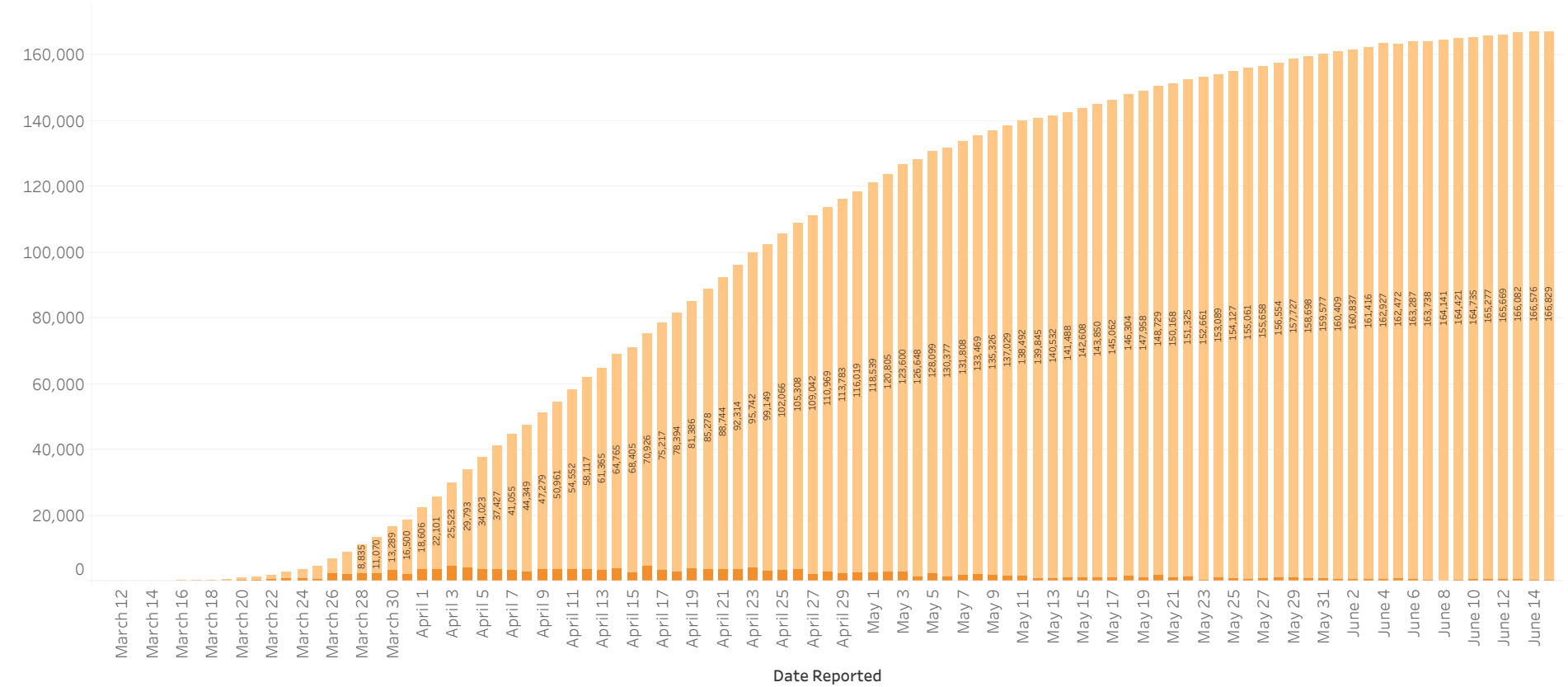
Covid-19 Daily Percent Positivity Reported by All Labs by Region



**The data are summarized based on specimen collection date using all PCR lab results.

■ NJ- Percent Positivity
 ■ Central- Percent Positivity
 ■ North-Percent Positivity
 ■ South-Percent Positivity
 ■ Total Tests-New Jersey

New and Cumulative Total Number of COVID-19 Cases in New Jersey



■ Previously reported
■ New Cases