

Lab Confirmed Cases: All Positives

169,734

Rate per 100,000: 1,931

Notable Dates:
March 4: Announcement of first NJ COVID-19 case
March 6: Start of commercial lab testing
March 9: EO 103, State of Emergency issued

March 12: Cancellation of public gatherings >250
March 16: EO 104, aggressive social distancing measures issued
March 18: Schools closed; cessation of in-person instruction at institutions of higher education

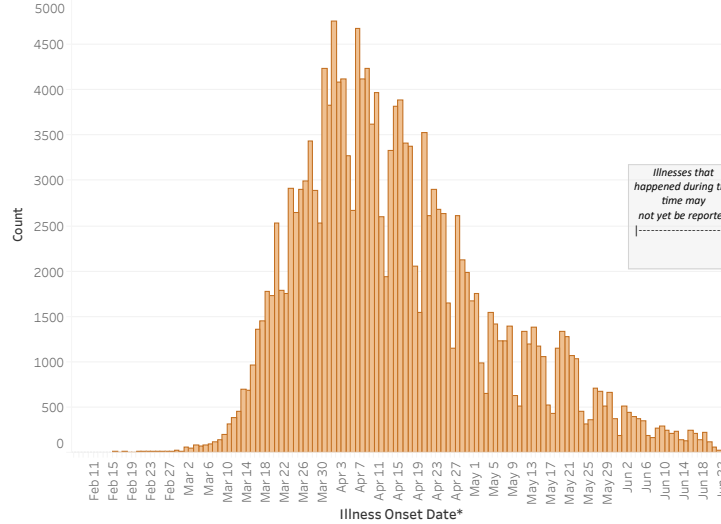
March 20: Start of mass-scale testing

March 21: EO 107, statewide stay-at-home order, closure of non-essential retail

May 2: Reopening of state parks and golf courses

May 14: Reopening of non-essential construction and curbside pick up at non-essential businesses

May 14: Reopening of beaches

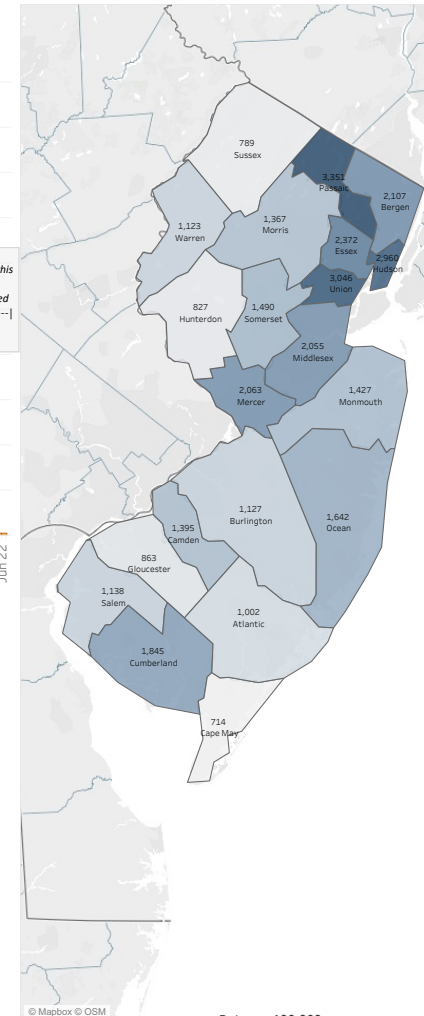


Illnesses that happened during this time may not yet be reported

*If illness onset date unknown the date of specimen collection or the date of NJDOH notification is used, whichever is earlier.

*This dashboard shows laboratory confirmed COVID-19 positive cases.

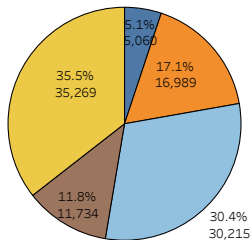
Rate per 100,000 by County



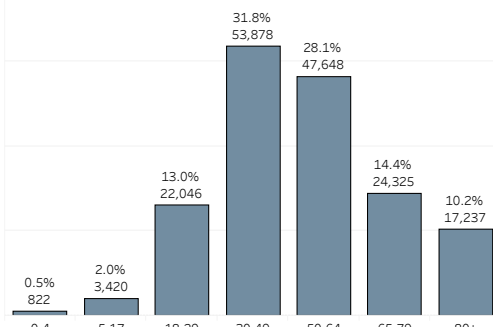
Rate per 100,000
714 3,351

All Cases by Race/Ethnicity

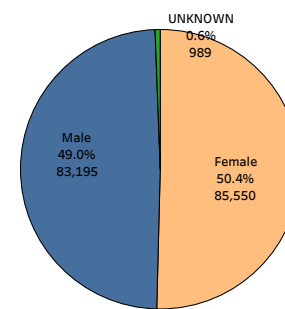
ASIAN(NON-HISPANIC) OTHER(NON-HISPANIC)
 BLACK(NON-HISPANIC) WHITE(NON-HISPANIC)
 HISPANIC



All Cases by Age Group

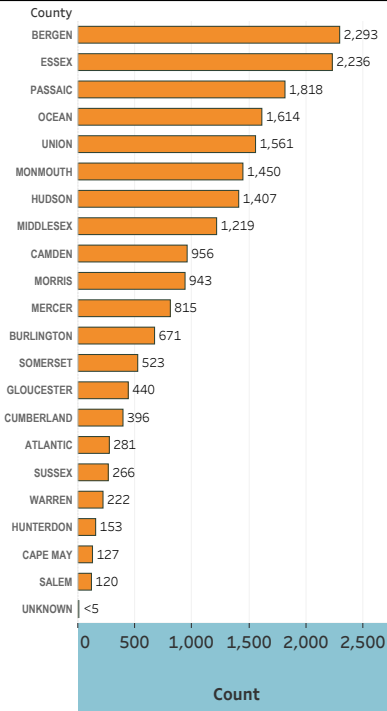


All Cases by Gender



Notable Dates in New Jersey's COVID-19 Outbreak and Road to Recovery

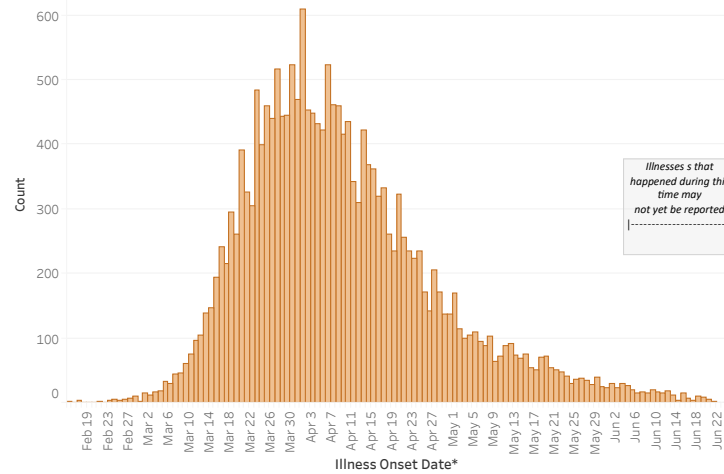
March 4: Announcement of first NJ COVID-19 case	March 20: Start of mass-scale testing	May 20: In-person sales at car and motorcycle dealerships and at bicycle shops resumes.	June 9: Stay-at-home order lifted. Outdoor recreational and entertainment businesses reopen.	June 29: Motor Vehicle Commission agencies resume issuing new licenses and permits.
March 6: Start of commercial lab testing	March 21: EO 107, statewide stay-at-home order, closure of non-essential retail	May 22: Campgrounds, some outdoor recreational businesses and public and private beaches, boardwalks, lakes, and lakeshores reopen. Outdoor gatherings limit increases from 10 to 25. Personal sports teams can start practice	June 15: Childcare centers reopen, outdoor dining reopens, non-essential retail stores reopen, motor vehicle Commission agencies reopen, libraries reopen for curbside pickup.	July 3: Outdoor gatherings limit increases to 500 people (anticipated).
March 9: EO 103, State of Emergency issued	May 2: State Parks, Forests, Golf courses reopen	May 17: Charter fishing and watercraft rental businesses reopen.	June 22: Organized sports activities resume, personal care businesses reopen, swimming pools reopen, limit on outdoor gatherings increases to 250 people (anticipated).	July 6: Youth day camps and summer programs can operate, modified outdoor graduation ceremonies begin.
March 12: Cancellation of public gatherings >250	March 16: EO 104, aggressive social distancing measures issued	May 18: Non-essential construction resumes. Non-essential retail reopens for curbside pickup.		
March 18: Schools closed; cessation of in-person instruction at institutions of higher education		June 1: Horse racetracks reopen		



Ever Hospitalized Cases

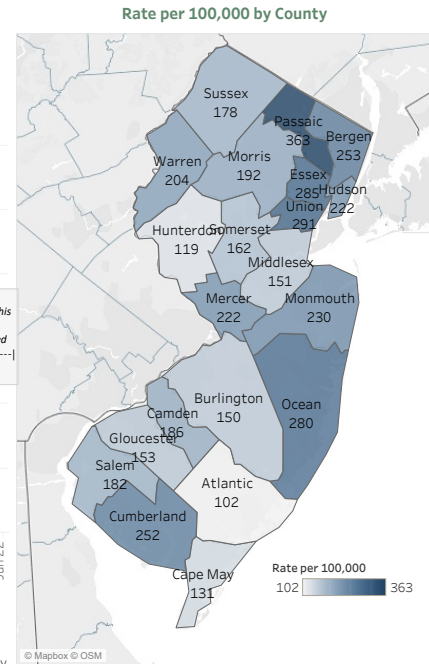
19,512

Rate per 100,000: 222



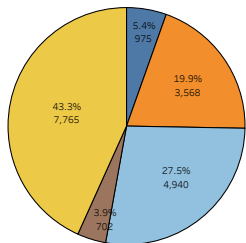
Notable Dates:
March 4: Announcement of first NJ COVID-19 case
March 6: Start of commercial lab testing
March 9: EO 103, State of Emergency issued
March 12: Cancellation of public gatherings >250
March 16: EO 104, aggressive social distancing measures issued
March 18: Schools closed; cessation of in-person instruction at institutions of higher education
March 20: Start of mass-scale testing
March 21: EO 107, statewide stay-at-home order, closure of non-essential retail
May 2: Reopening of state parks and golf courses
May 14: Reopening of non-essential construction and curbside pickup at non-essential businesses
May 14: Reopening of beaches

*If illness onset date unknown the date of specimen collection or the date of NJDOH notification is used, whichever is earlier.
 *Due to the time required to investigate a case, their numbers may not match with other data sources (e.g. hospital survey or registry data).
 *Data shows cumulative number of laboratory confirmed cases who were ever hospitalized.
 *Information on persons ever hospitalized is obtained through public health investigation and may not match other data sources.

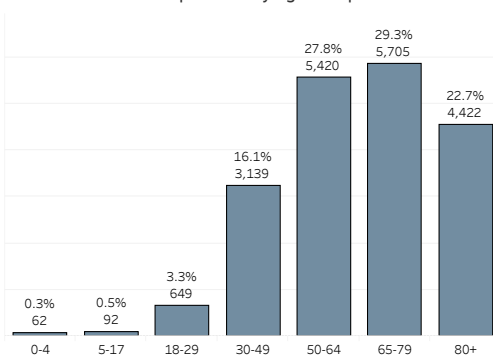


Hospitalized by Race/Ethnicity

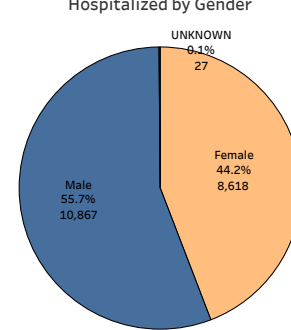
ASIAN(NON-HISPANIC) OTHER(NON-HISPANIC)
 BLACK(NON-HISPANIC) WHITE(NON-HISPANIC)
 HISPANIC



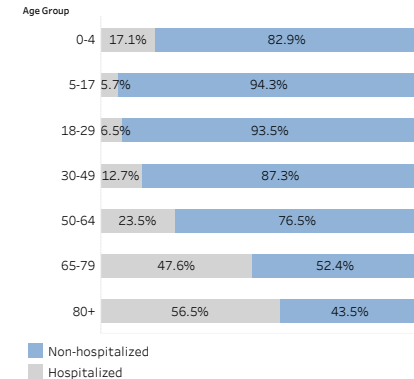
Hospitalized by Age Group



Hospitalized by Gender



Percentage of each age group who have been hospitalized



Notable Dates in New Jersey's COVID-19 Outbreak and Road to Recovery

March 4: Announcement of first NJ COVID-19 case
March 6: Start of commercial lab testing
March 9: EO 103, State of Emergency issued
March 12: Cancellation of public gatherings >250
March 16: EO 104, aggressive social distancing measures issued
March 18: Schools closed; cessation of in-person instruction at institutions of higher education

March 20: Start of mass-scale testing
March 21: EO 107, statewide stay-at-home order, closure of non-essential retail
May 2: State Parks, Forests, Golf courses reopen
May 17: Charter fishing and watercraft rental businesses reopen.
May 18: Non-essential construction resumes. Non-essential retail reopens for curbside pickup.

Further information on New Jersey's phased restart can be found here: <https://covid19.nj.gov/NJfaqs?query=phases+&Facets.filterbox.filter0=%5B%5D>

May 20: In-person sales at car and motorcycle dealerships and at bicycle shops resumes.
May 22: Campgrounds, some outdoor recreational businesses and public and private beaches, boardwalks, lakes, and lakeshores reopen. Outdoor gatherings limit increases from 10 to 25. Professional sports teams can start practice
May 26: Elective surgeries and invasive procedures resume.
June 1: Horse racetracks reopen

June 9: Stay-at-home order lifted. Outdoor recreational and entertainment businesses reopen.
June 15: Childcare centers reopen, outdoor dining reopens, non-essential retail stores reopen, motor vehicle Commission agencies reopen, libraries reopen for curbside pickup.
June 22: Organized sports activities resume, personal care businesses reopen, swimming pools reopen, limit on outdoor gatherings increases to 250 people (anticipated).

June 29: Motor Vehicle Commission agencies resume issuing new licenses and permits.
July 3: Outdoor gatherings limit increases to 500 people (anticipated).
July 6: Youth day camps and summer programs can operate, modified outdoor graduation ceremonies begin.

Lab Confirmed Cases: Deceased

12,949

Rate per 100,000: 147

Notable Dates:

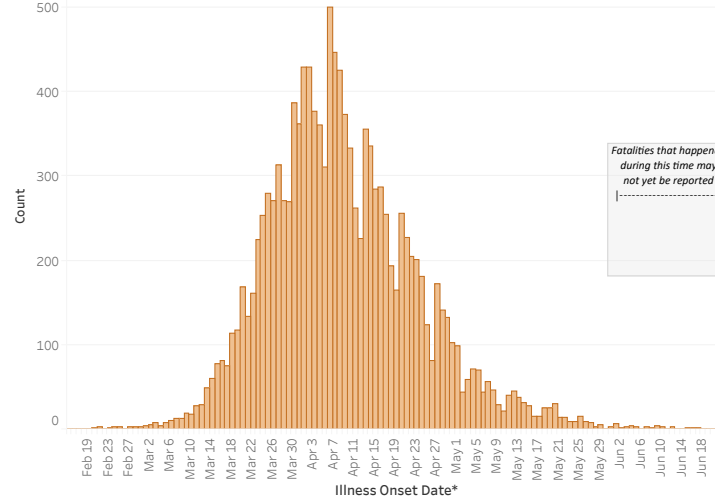
March 4: Announcement of first NJ COVID-19 case
March 6: Start of commercial lab testing
March 9: EO 103, State of Emergency issued

March 12: Cancellation of public gatherings >250
March 16: EO 104, aggressive social distancing measures issued
March 18: Schools closed; cessation of in-person instruction at institutions of higher education

March 20: Start of mass-scale testing

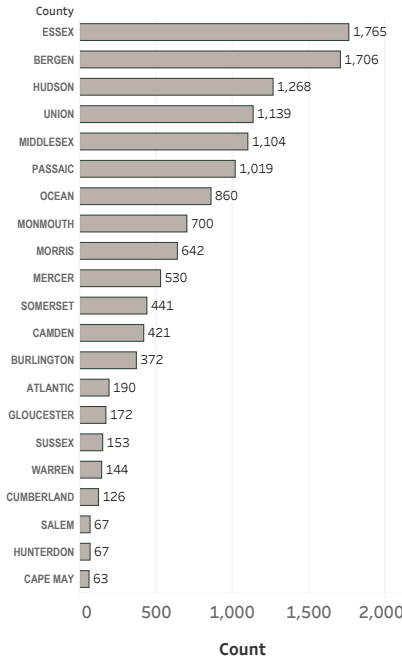
March 21: EO 107, statewide stay-at-home order, closure of non-essential retail

May 2: Reopening of state parks and golf courses
May 14: Reopening of non-essential construction and curbside pick up at non-essential businesses
May 22: Reopening of beaches

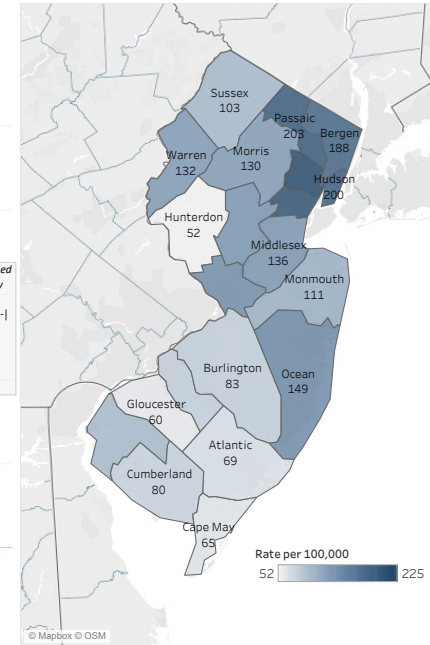


Fatalities that happened during this time may not yet be reported

*If illness onset date unknown the date of specimen collection or the date of NJDOH notification is used, whichever is earlier.
 *This dashboard shows persons with laboratory-confirmed COVID-19 who have died. Some reports may be delayed due to when death certificates are finalized.

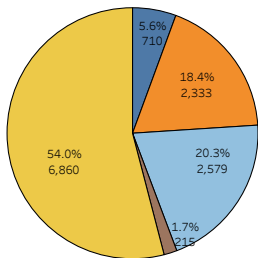


Rate per 100,000 by County

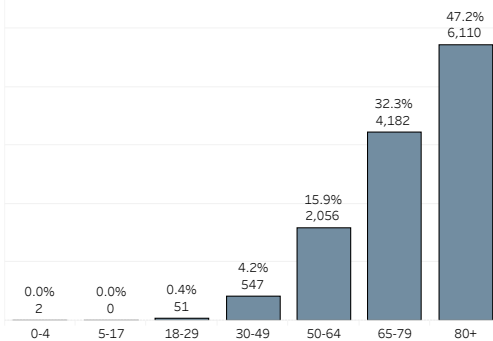


Race/Ethnicity

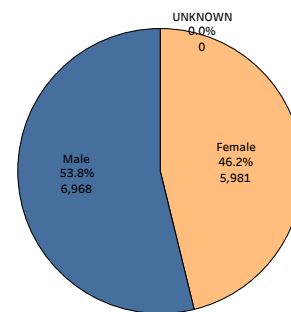
- ASIAN(NON-HISPANIC)
- BLACK(NON-HISPANIC)
- HISPANIC
- OTHER(NON-HISPANIC)
- WHITE(NON-HISPANIC)



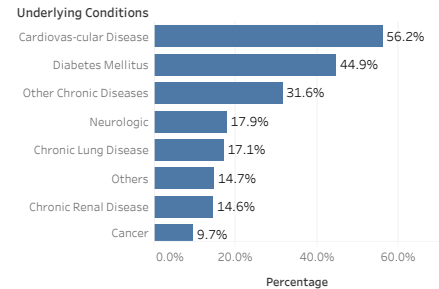
Deaths by Age Group



Deaths by Gender



Underlying conditions for Lab-confirmed COVID-19 associated deaths



*Other includes: mental, vision, speech, hearing and immunocompromised conditions. Note: Each case may have multiple conditions; thus, the sum of all condition counts is greater than the total number of deaths.

Notable Dates in New Jersey's COVID-19 Outbreak and Road to Recovery

March 4: Announcement of first NJ COVID-19 case
March 6: Start of commercial lab testing
March 9: EO 103, State of Emergency issued
March 12: Cancellation of public gatherings >250
March 16: EO 104, aggressive social distancing measures issued
March 18: Schools closed; cessation of in-person instruction at institutions of higher education

March 20: Start of mass-scale testing
March 21: EO 107, statewide stay-at-home order, closure of non-essential retail
May 2: State Parks, Forests, Golf courses reopen
May 17: Charter fishing and watercraft rental businesses reopen.
May 18: Non-essential construction resumes. Non-essential retail reopens for curbside pickup.

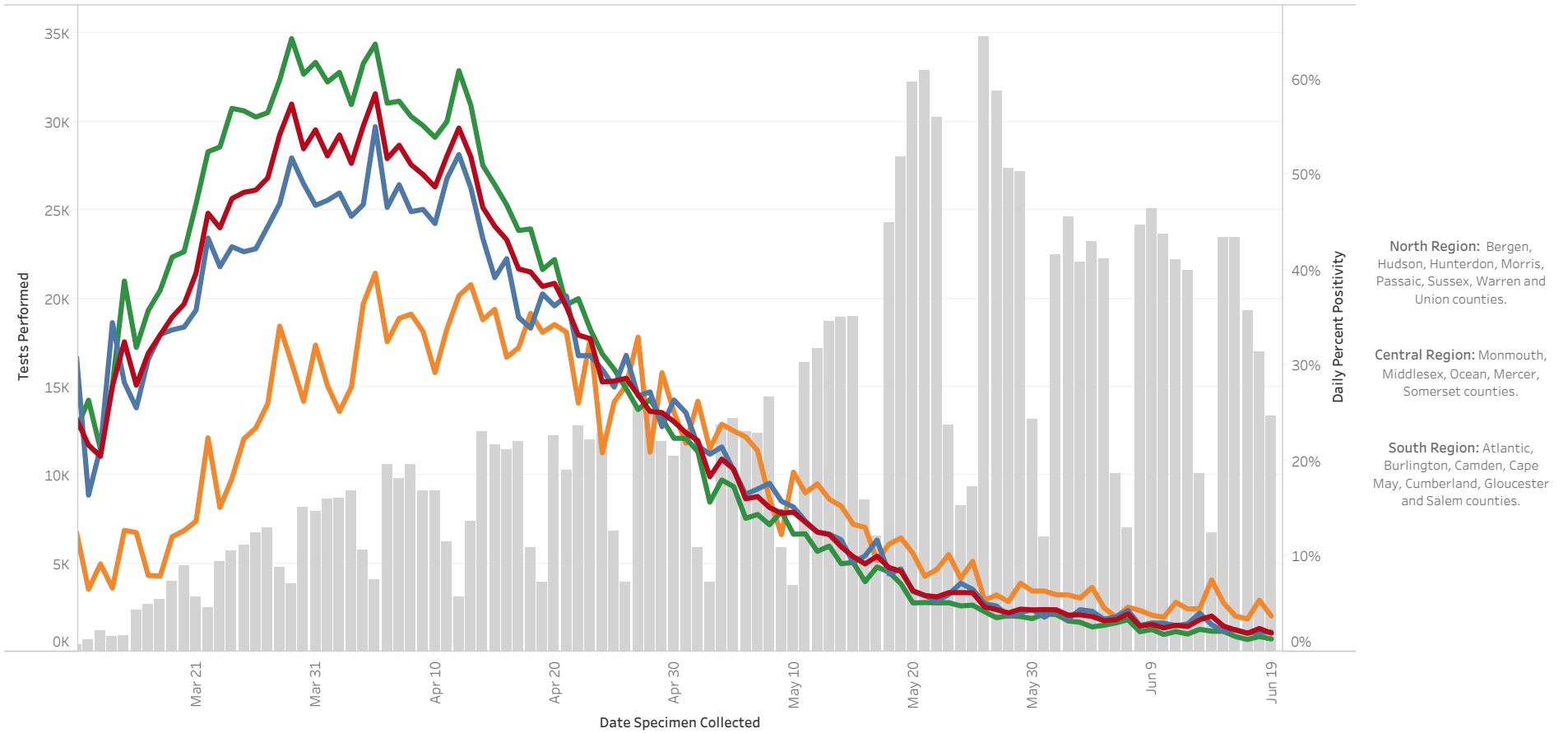
May 20: In-person sales at car and motorcycle dealerships and at bicycle shops resumes.
May 22: Campgrounds, some outdoor recreational businesses and public and private beaches, boardwalks, lakes, and lakeshores reopen. Outdoor gatherings limit increases from 10 to 25. Professional sports teams can start practice
May 26: Elective surgeries and invasive procedures resume.
June 1: Horse racetracks reopen

June 9: Stay-at-home order lifted. Outdoor recreational and entertainment businesses reopen.
June 15: Childcare centers reopen, outdoor dining reopens, non-essential retail stores reopen, motor Vehicle Commission agencies reopen, libraries reopen for curbside pickup.
June 22: Organized sports activities resume, personal care businesses reopen, swimming pools reopen, limit on outdoor gatherings increases to 250 people (anticipated).

June 29: Motor Vehicle Commission agencies resume issuing new licenses and permits.
July 3: Outdoor gatherings limit increases to 500 people (anticipated).
July 6: Youth day camps and summer programs can operate, modified outdoor graduation ceremonies begin.

Further information on New Jersey's phased restart can be found here: <https://covid19.nj.gov/NJ-faqs?query=phases+&facets.filterbox.filter0=%5B%5D>

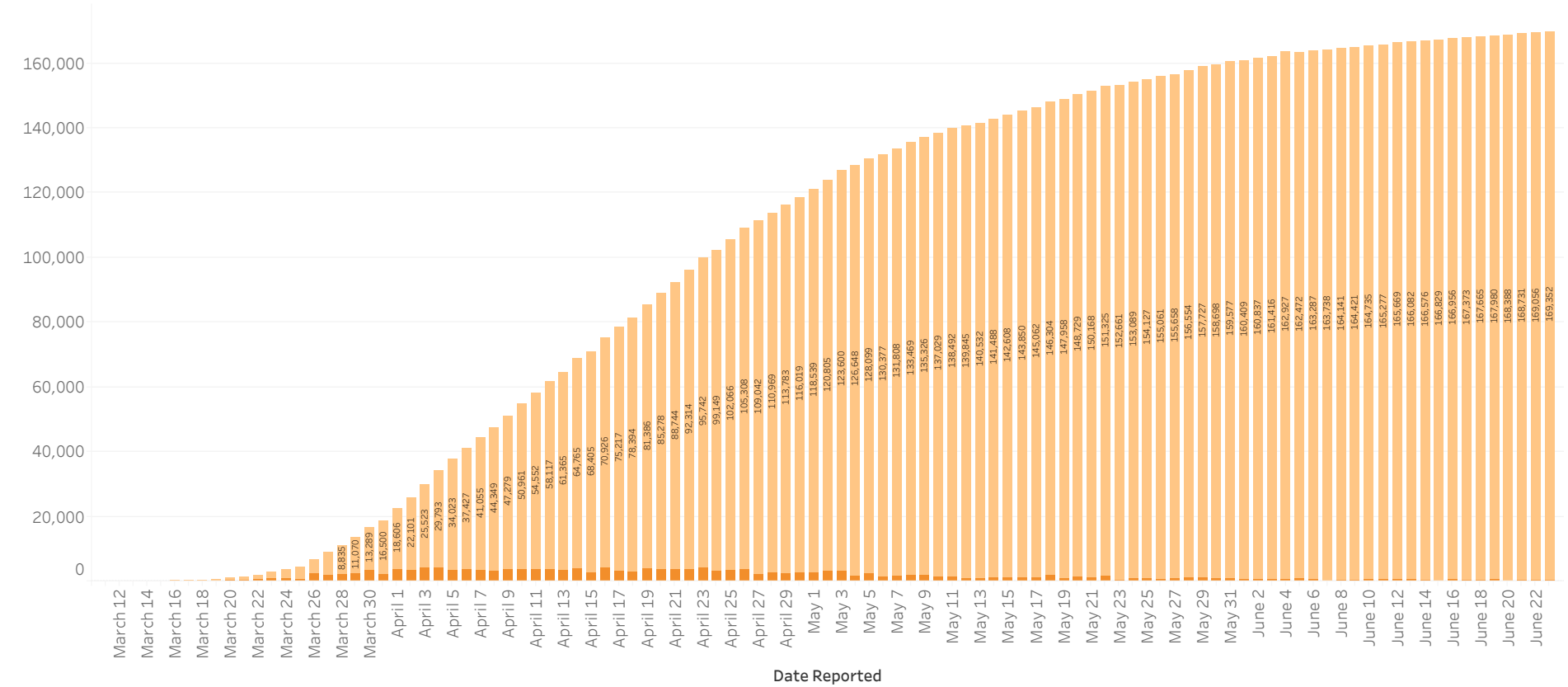
Covid-19 Daily Percent Positivity Reported by All Labs by Region



**The data are summarized based on specimen collection date using all PCR lab results.

■ NJ- Percent Positivity
 ■ Central- Percent Positivity
 ■ North-Percent Positivity
 ■ South-Percent Positivity
 ■ Total Tests-New Jersey

New and Cumulative Total Number of COVID-19 Cases in New Jersey



■ Previously reported
■ New Cases