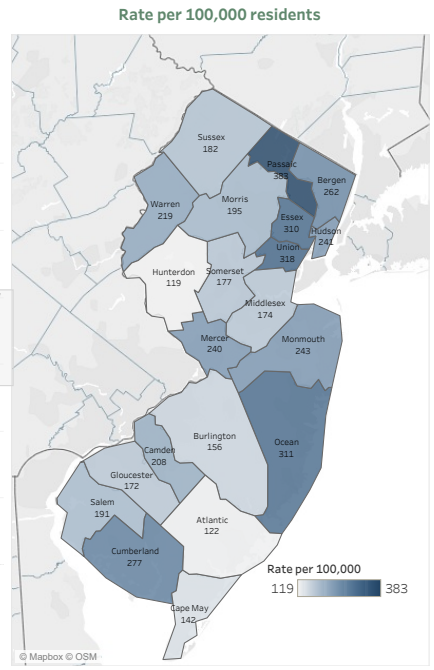
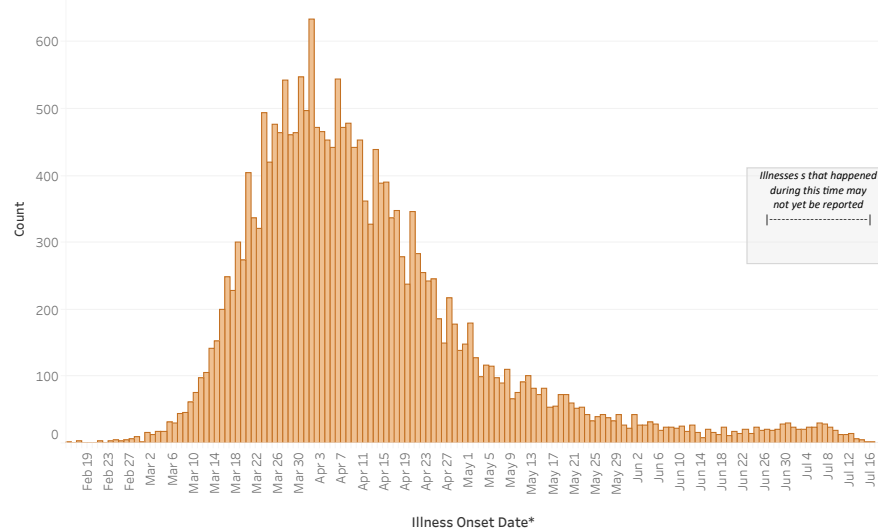


**Ever Hospitalized Cases**

**21,064**

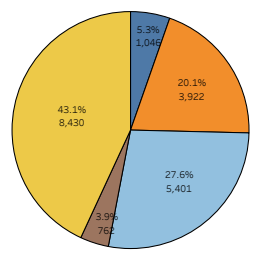
**Rate per 100,000: 240**



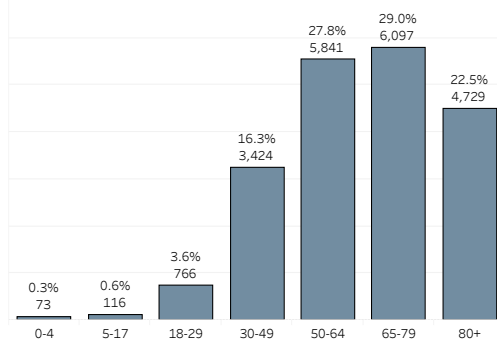
\*If illness onset date is unknown the date of specimen collection or the date of NJDOH notification is used, whichever is earlier.  
 \*Data show cumulative number of laboratory confirmed cases who were ever hospitalized.  
 \*Information on persons ever hospitalized is obtained through public health investigation and may not match other data sources (e.g., hospital survey or registry data).

**Hospitalized by Race/Ethnicity**

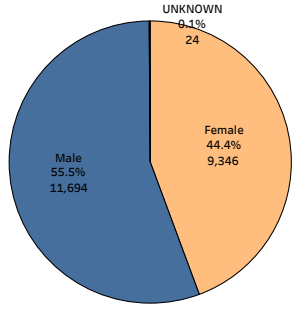
- ASIAN(NON-HISPANIC)
- BLACK(NON-HISPANIC)
- HISPANIC
- OTHER(NON-HISPANIC)
- WHITE(NON-HISPANIC)



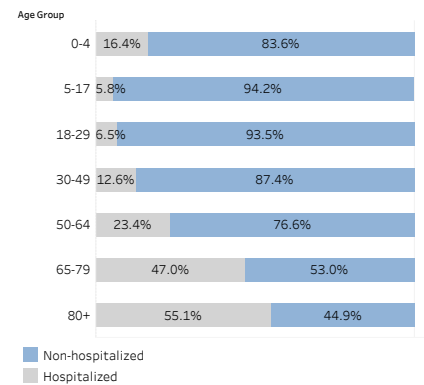
**Hospitalized by Age Group**



**Hospitalized by Gender**



**Percentage of each age group who have been hospitalized**



**Notable Dates in New Jersey's COVID-19 Outbreak and Road to Recovery**

**March 4:** Announcement of first NJ COVID-19 case  
**March 6:** Start of commercial lab testing  
**March 9:** EO 103, State of Emergency issued  
**March 12:** Cancellation of public gatherings >250  
**March 16:** EO 104, aggressive social distancing measures issued  
**March 18:** Schools closed; cessation of in-person instruction at institutions of higher education

**March 20:** Start of mass-scale testing  
**March 21:** EO 107, statewide stay-at-home order, closure of non-essential retail  
**May 2:** State Parks, Forests, Golf courses reopen  
**May 17:** Charter fishing and watercraft rental businesses reopen.  
**May 18:** Non-essential construction resumes. Non-essential retail reopens for curbside pickup.

Further information on New Jersey's phased restart can be found here: <https://covid19.nj.gov/NJfaqs?query=phases+&Facets.filterbox.filter0=%5B%5D>

**May 20:** In-person sales at car and motorcycle dealerships and at bicycle shops resumes.  
**May 22:** Campgrounds, some outdoor recreational businesses and public and private beaches, boardwalks, lakes, and lakeshores reopen. Outdoor gatherings limit increases from 10 to 25. Professional sports teams can start practice  
**May 26:** Elective surgeries and invasive procedures resume.  
**June 1:** Horse racetracks reopen

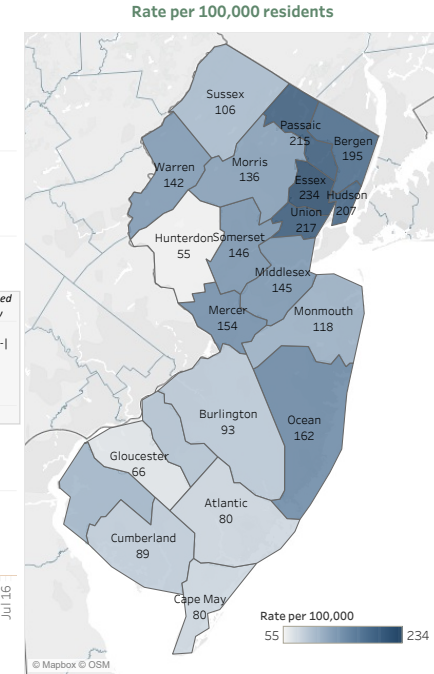
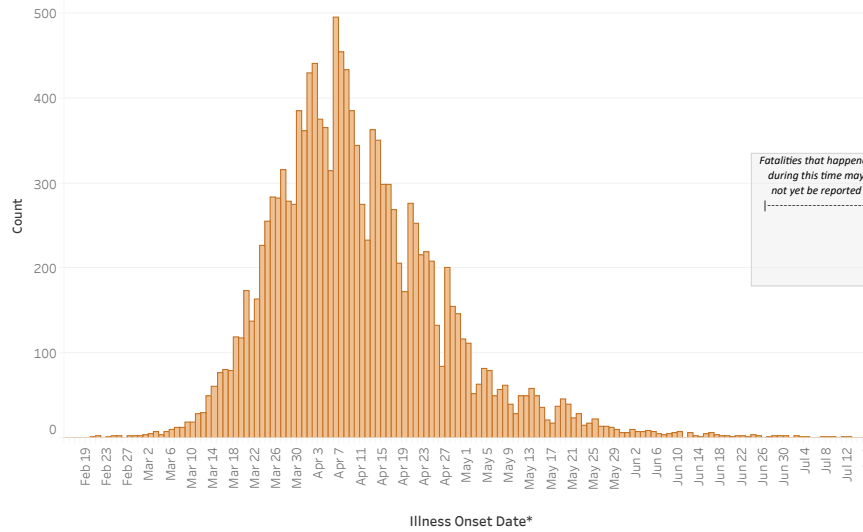
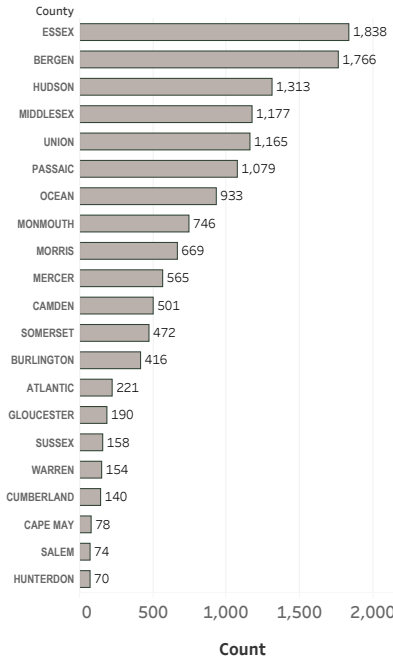
**June 9:** Stay-at-home order lifted. Outdoor recreational and entertainment businesses reopen.  
**June 15:** Childcare centers reopen, outdoor dining reopens, non-essential retail stores reopen, motor Vehicle Commission agencies reopen, libraries reopen for curbside pickup.  
**June 22:** Organized sports activities resume, personal care businesses reopen, swimming pools reopen, limit on outdoor gatherings increases to 250 people (anticipated).

**June 29:** Motor Vehicle Commission agencies resume issuing new licenses and permits.  
**July 3:** Outdoor gatherings limit increases to 500 people (anticipated).  
**July 6:** Youth day camps and summer programs can operate, modified outdoor graduation ceremonies begin.

### Lab Confirmed Cases: Deceased

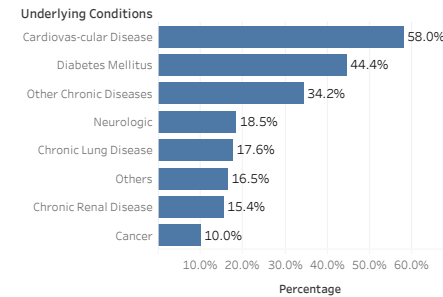
**13,725**

Rate per 100,000: **156**



\*If illness onset date is unknown the date of specimen collection or the date of NJDOH notification is used, whichever is earlier.  
 \*This dashboard shows persons with laboratory-confirmed COVID-19 who have died. Some reports may be delayed due to when death certificates are finalized.

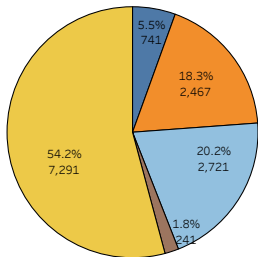
### Underlying conditions for Lab-confirmed COVID-19 associated deaths



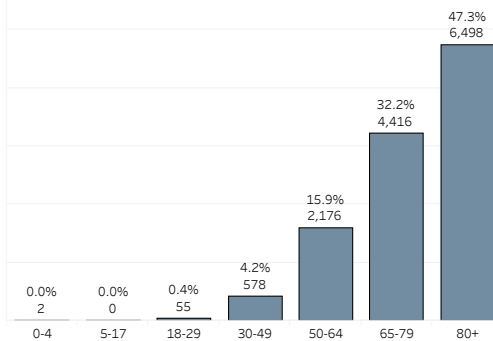
\*Other includes: mental, vision, speech, hearing and immunocompromised conditions. Note: Each case may have multiple conditions; thus, the sum of all condition counts is greater than the total number of deaths.

### Race/Ethnicity

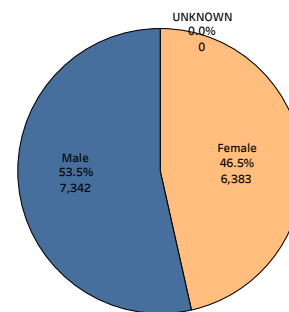
- ASIAN(NON-HISPANIC)
- BLACK(NON-HISPANIC)
- HISPANIC
- OTHER(NON-HISPANIC)
- WHITE(NON-HISPANIC)



### Deaths by Age Group



### Deaths by Gender

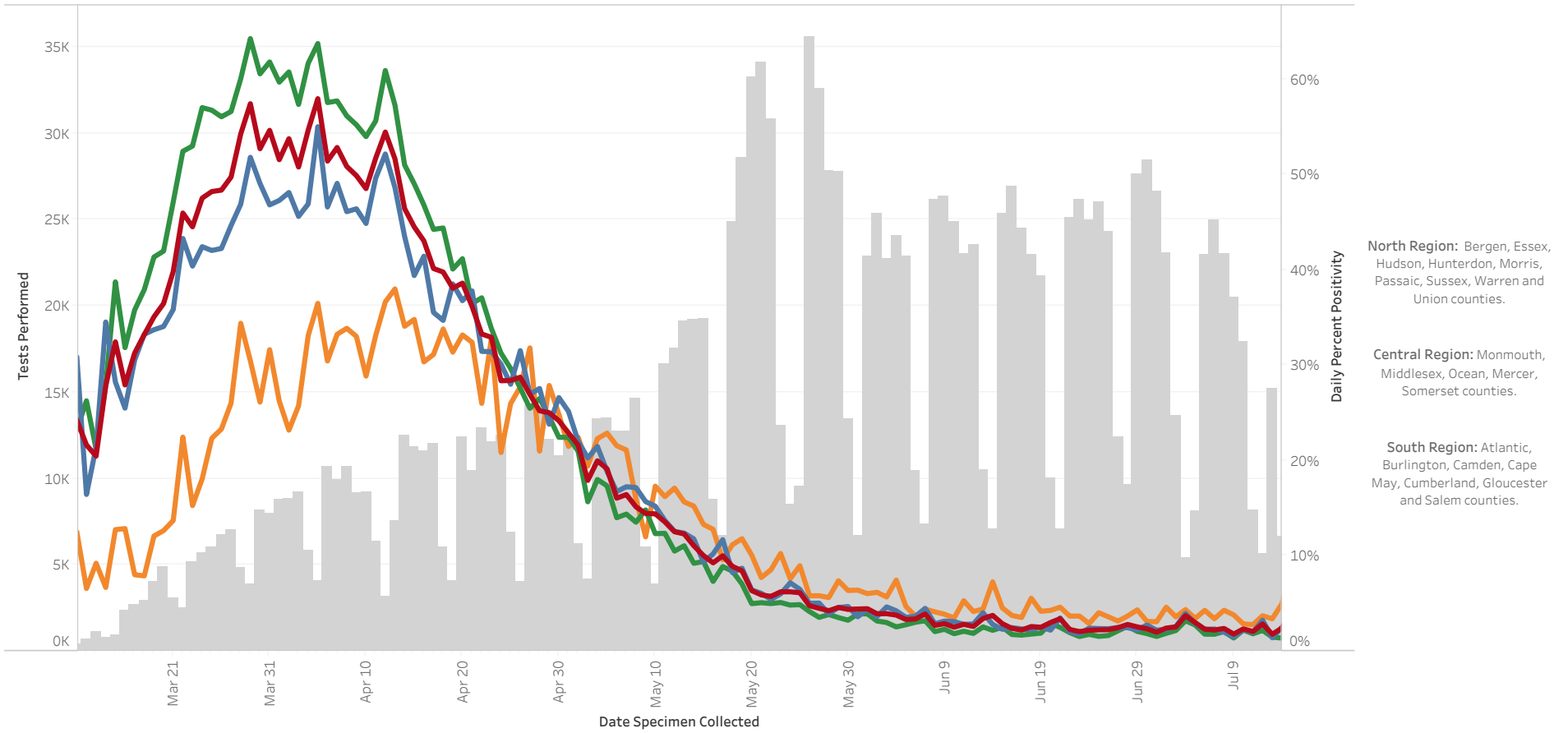


### Notable Dates in New Jersey's COVID-19 Outbreak and Road to Recovery

<b>March 4:</b> Announcement of first NJ COVID-19 case	<b>March 20:</b> Start of mass-scale testing	<b>May 20:</b> In-person sales at car and motorcycle dealerships and at bicycle shops resumes.	<b>June 9:</b> Stay-at-home order lifted. Outdoor recreational and entertainment businesses reopen.	<b>June 29:</b> Motor Vehicle Commission agencies resume issuing new licenses and permits.
<b>March 6:</b> Start of commercial lab testing	<b>March 21:</b> EO 107, statewide stay-at-home order, closure of non-essential retail	<b>May 22:</b> Campgrounds, some outdoor recreational businesses and public and private beaches, boardwalks, lakes, and lakeshores reopen. Outdoor gatherings limit increases from 10 to 25. Professional sports teams can start practice	<b>June 15:</b> Childcare centers reopen, outdoor dining reopens, non-essential retail stores reopen, motor Vehicle Commission agencies reopen, libraries reopen for curbside pickup.	<b>July 3:</b> Outdoor gatherings limit increases to 500 people (anticipated).
<b>March 9:</b> EO 103, State of Emergency issued	<b>May 17:</b> State Parks, Forests, Golf courses reopen	<b>May 18:</b> Non-essential construction resumes. Non-essential retail reopens for curbside pickup.	<b>June 22:</b> Organized sports activities resume, personal care businesses reopen, swimming pools reopen, limit on outdoor gatherings increases to 250 people (anticipated).	<b>July 6:</b> Youth day camps and summer programs can operate, modified outdoor graduation ceremonies begin.
<b>March 12:</b> Cancellation of public gatherings >250	<b>May 2:</b> Charter fishing and watercraft rental businesses reopen.			
<b>March 16:</b> EO 104, aggressive social distancing measures issued				
<b>March 18:</b> Schools closed; cessation of in-person instruction at institutions of higher education				

Further information on New Jersey's phased restart can be found here: <https://covid19.nj.gov/NJ-faqs?query=phas-es+%26Facets.filterbox.filter0=%5B%5D>

Covid-19 Daily Percent Positivity Reported by All Labs by Region



\*\*The data are summarized based on specimen collection date using all PCR lab results.

■ NJ- Percent Positivity     
 ■ Central- Percent Positivity     
 ■ North-Percent Positivity     
 ■ South-Percent Positivity     
 ■ Total Tests-New Jersey

# New and Cumulative Total Number of COVID-19 Cases in New Jersey

