



## [COVID-19 Home](#)

- ▶ [COVID-19 Home](#)
- ▶ [About COVID-19 Disease](#)
- ▶ [Customer Service Changes at RIDOH](#)
- ▶ [Healthcare Providers](#)
- ▶ [American Sign Language \(ASL\)](#)
- ▶ [Food Sites for Children](#)
- ▶ [Rhode Island Data](#)
- ▶ [Emergency Regulations](#)
- ▶ [Publications & Resources](#)
- ▶ [Programs](#)



☰ COVID-19

## [COVID-19 Home](#)

- ▶ [About COVID-19 Disease](#)
- ▶ [Customer Service Changes at RIDOH](#)
- ▶ [Healthcare Providers](#)
- ▶ [American Sign Language \(ASL\)](#)
- ▶ [Food Sites for Children](#)
- ▶ [Rhode Island Data](#)
- ▶ [Emergency Regulations](#)
- ▶ [Publications & Resources](#)
- ▶ [Programs](#)



Help for those in

# RIDELIVERS

quarantine or isolation

## Get Data

---

 [Data Table](#)

### Data Source

 [Acute Infectious Disease Epidemiology, Center for State Laboratories and Medical Examiners, Division of](#)

## Contact

---

 [RIDOH.COVID19Questions](mailto:RIDOH.COVID19Questions)

## COVID-19 Disease Data

### Purpose

---

To track and monitor COVID-19 disease within the state of Rhode Island.

### Key Information

---

Number of Rhode Island COVID-19 positive and presumptive positive cases, number of people who had negative

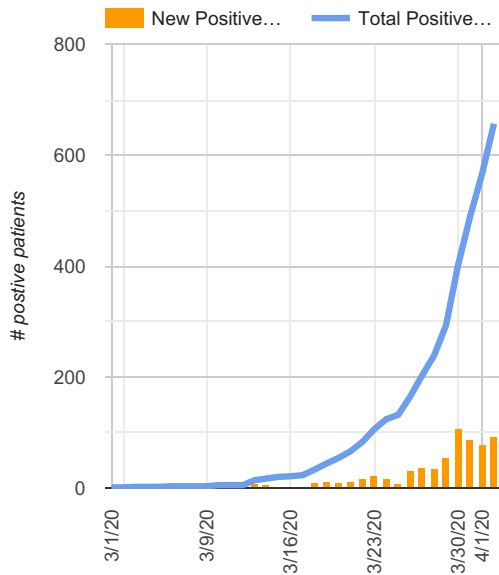
test results at RIDOH's State Health Laboratory, number of pending test results, and approximate number of people who are currently instructed to self-quarantine in Rhode Island.

## Collection Period

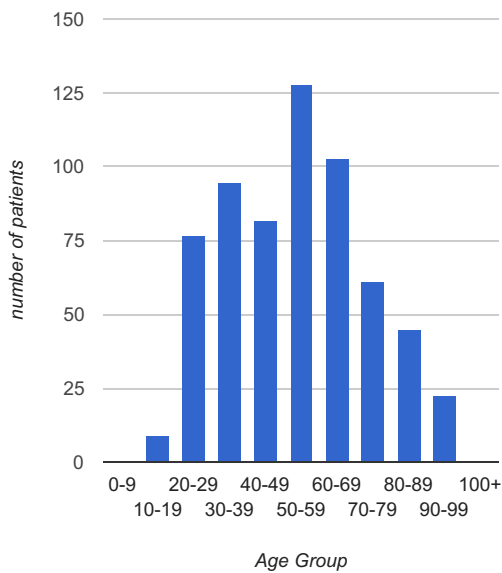
February 2020 - current

## Rhode Island Numbers

### Rhode Island COVID-19 Positive Patients

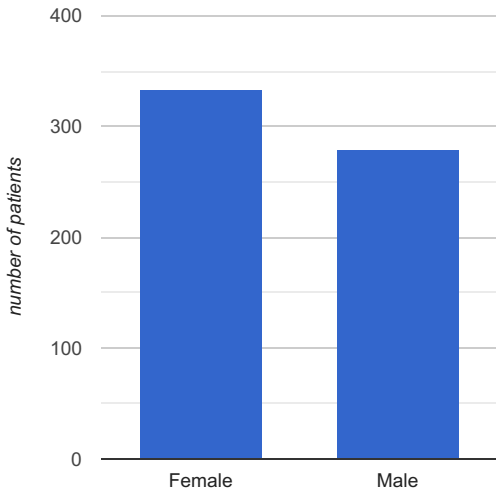


### Rhode Island COVID-19 Patients by Age



Note: Zero in an age category indicates either zero patients or less than five patients.

## Rhode Island COVID-19 Patients by Sex



total and the data at the city and town level because additional time is of some COVID-19 patients.

[Public Records Requests](#) [Programs](#) [Topics](#) [News](#)

### CONTACT

#### Department of Health

3 Capitol Hill  
Providence, RI 02908

[Email us](#)

[Directions](#)

 Phone: 401-222-5960

 After Hours Phone: 401-276-8046

RI Relay 711

[Phonebook](#)

### OFFICE HOURS

Monday - Friday  
8:30 AM - 4:30 PM

Vital Records 7:30 AM - 3:30 PM

Food Protection 8:30 AM - 4 PM

Parking restrictions until 3 PM

### PUBLICATIONS CENTER

[Order Materials](#)

### COVID-19 INFO LINE

Every day (weekend included)

8:30 AM - 4:30 PM

Phone:  401-222-8022

After hours: Call **211**

 [RIDOH.COVID19Questions@health.ri.gov](mailto:RIDOH.COVID19Questions@health.ri.gov)

### OTHER LANGUAGES

[Español](#)  
[Português](#)

 [FOR EMPLOYEES](#)

### WEBSITE POLICIES

