



Search...



How likely am I to get COVID-19?

You are more likely to get sick if you are near an infected person for long periods of time. For example, if the sick person:



Lives with you.



Works closely with you.



Carpools with you.



Is near you in a healthcare facility.



Hangs out with you.



Is in your class.

Who's more likely to get seriously ill?



Adults aged 60 and older.



People with **weakened immune systems** from medical conditions or their treatment.

Help prevent the spread of germs if someone near you is sick.
Learn steps to stay healthy at tpchd.org/coronavirus.

[Healthy People](#) » [Diseases](#) »

Human Coronavirus

[Print](#) [Feedback](#)

[Share & Bookmark](#) [Font Size:](#)



Frequently Asked Questions



COVID-19 case numbers



Information for Schools and Childcare Providers



Information for Healthcare Providers

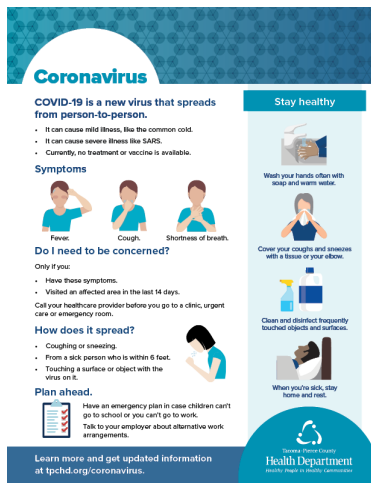


Information for Businesses



Information for Human Services Providers

Decisive steps to contain COVID-19.



Your family's health is our top priority as we work to prevent the spread of COVID-19 in Pierce County.

Public health follows a playbook for viral outbreaks.

COVID-19 transmission is widespread in our region. Decisive action is required.

Social distancing and basic hygiene are the best steps you can take to protect yourself.

Gov. Inslee [ordered schools to close for 6 weeks](#) and [canceled gatherings of 250 or more people](#).

View this flyer in [Korean](#), [Spanish](#), [Chinese](#), [Tagalog](#), [Vietnamese](#) or [Russian](#).

Cases in Pierce County

We confirmed 2 more cases in Pierce County on March 13, bringing our total to 19. You can [learn basic information about each case](#).

Answers to your questions

This outbreak is fluid. Our staff and the Washington State Department of Health are working to answer your questions:

- DOH's call center is open 6 a.m.-10 p.m., 7 days a week. Call (800) 525-0127 and press #.
- What to do you if you:
 - [Have suspected or confirmed COVID-19](#).
 - [Might have been exposed](#).
 - [Have symptoms but weren't around someone who was diagnosed](#).

Our FAQs answer dozens of your most-asked questions. You can find some of our more-asked answers below or [visit our FAQ page for many more](#).

What should I do if an employee or someone I know is being tested?

What are COVID-19 symptoms?

How does COVID-19 spread?

Who should get tested for COVID-19?

What type of cleaning and disinfecting products should I use?

Where can I get tested for COVID-19?

How will you make sure people don't gather in large groups?

Schools are closed and I have to work. Where can I find out information for childcare?

Stay up to date

We offer [several ways for you to stay informed](#):

- Check this page often. We update it regularly.
- [Subscribe to the Your Reliable Source blog.](#)
- [Track the statewide investigation.](#)
- Follow us on [Facebook](#), [Twitter](#) and [Instagram](#).

Learn more

- [CDC travel advisories page.](#)
- [Operation Suds handwashing education materials.](#)
- [Blog: Yes it's still safe to dine out during the COVID-19 outbreak.](#)
- [Blog: Help us protect our most vulnerable populations.](#)
- [Blog: Simple steps to prevent COVID-19.](#)
- [Blog: Social distancing is good right now. Social isolation is not.](#)
- [Blog: Skip the trip to our office—use our online resources instead.](#)
- [Blog: How we investigate COVID-19.](#)



3629 S. D St.
Tacoma, WA 98418-6813



(253) 798-6500
(800) 992-2456
TDD (253) 798-6050

Stay Connected



Website Design by Granicus - Connecting People and Government