



Search...



How likely am I to get COVID-19?

You are more likely to get sick if you are near an infected person for long periods of time. For example, if the sick person:



Lives with you.



Works closely with you.



Carpools with you.



Is near you in a healthcare facility.



Hangs out with you.



Is in your class.

Who's more likely to get seriously ill?



Adults aged 60 and older.



People with **weakened immune systems** from medical conditions or their treatment.

Help prevent the spread of germs if someone near you is sick.
Learn steps to stay healthy at tpchd.org/coronavirus.

[Healthy People](#) » [Diseases](#) »

Human Coronavirus

[Print](#) [Feedback](#)

[Share & Bookmark](#) [Font Size:](#)



Frequently Asked Questions



COVID-19 case numbers



Information for Schools and Childcare Providers



Information for Healthcare Providers

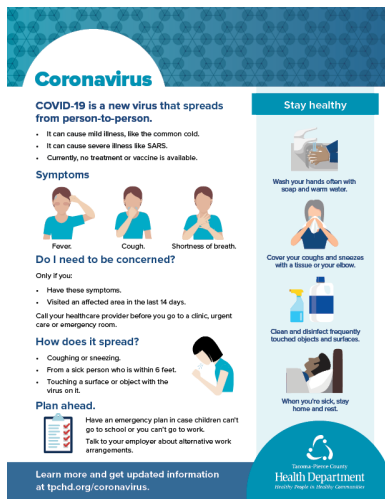


Information for Businesses



Information for Human Services Providers

Decisive steps to contain COVID-19.



Your family's health is our top priority as we work to prevent the spread of COVID-19 in Pierce County.

Public health follows a playbook for viral outbreaks.

COVID-19 transmission is widespread in our region. Decisive action is required.

Social distancing and basic hygiene are the best steps you can take to protect yourself.

Gov. Inslee [ordered schools to close for 6 weeks](#) and [canceled gatherings of 250 or more people](#).

View this flyer in [Korean](#), [Spanish](#), [Chinese](#), [Tagalog](#), [Vietnamese](#) or [Russian](#).

Cases in Pierce County

We confirmed 7 new cases in Pierce County on March 14, bringing our total to 26. The University of Washington virology lab and the state Public Health Laboratories have tested 457 of our residents. You can [learn basic information about each positive case](#).

Answers to your questions

This outbreak is fluid. Our staff and the Washington State Department of Health are working to answer your questions:

- DOH's call center is open 6 a.m.-10 p.m., 7 days a week. Call (800) 525-0127 and press #.
- What to do you if you:
 - [Have suspected or confirmed COVID-19](#).
 - [Might have been exposed](#).
 - [Have symptoms but weren't around someone who was diagnosed](#).

Our FAQs answer dozens of your most-asked questions. You can find some of our more-asked answers below or [visit our FAQ page for many more](#).

FAQS

What should I do if an employee or someone I know is being tested?

What are COVID-19 symptoms?

How does COVID-19 spread?

Who should get tested for COVID-19?

What type of cleaning and disinfecting products should I use?

Where can I get tested for COVID-19?

How will you make sure people don't gather in large groups?

Schools are closed and I have to work. Where can I find out information for childcare?

Stay up to date

We offer [several ways for you to stay informed](#):

- Check this page often. We update it regularly.
- [Subscribe to the Your Reliable Source blog.](#)
- [Track the statewide investigation.](#)
- Follow us on [Facebook](#), [Twitter](#), [Instagram](#) and [YouTube](#).

Learn more

- [CDC travel advisories page.](#)
- [Operation Suds handwashing education materials.](#)
- [Blog: Yes it's still safe to dine out during the COVID-19 outbreak.](#)

- [Blog: Help us protect our most vulnerable populations.](#)
- [Blog: Simple steps to prevent COVID-19.](#)
- [Blog: Social distancing is good right now. Social isolation is not.](#)
- [Blog: Skip the trip to our office—use our online resources instead.](#)
- [Blog: How we investigate COVID-19.](#)



3629 S. D St.
Tacoma, WA 98418-6813



(253) 798-6500
(800) 992-2456
TDD (253) 798-6050

Stay Connected



Website Design by Granicus - Connecting People and Government