

# Coronavirus disease 2019 (COVID-19) Situation Report – 47

Data as reported by national authorities by 10AM CET 07 March 2020

## HIGHLIGHTS

- 5 new countries/territories/areas (Colombia, Holy See, Peru, Serbia, and Togo) have reported cases of COVID-19 in the past 24 hours.
- The global number of reported cases of COVID-19 has surpassed 100,000.
- OpenWHO has reached 161, 000 learners in COVID-19 courses. The introductory course on COVID-19 has been partially or fully translated into 17 national languages. For more information, and to enroll in these free courses, please visit OpenWHO's [COVID-19 channel](#).

## SITUATION IN NUMBERS total and new cases in last 24 hours

### Globally

101 927 confirmed (3735 new)

### China

80 813 confirmed (102 new)

3073 deaths (28 new)

### Outside of China

21 110 confirmed (3633 new)

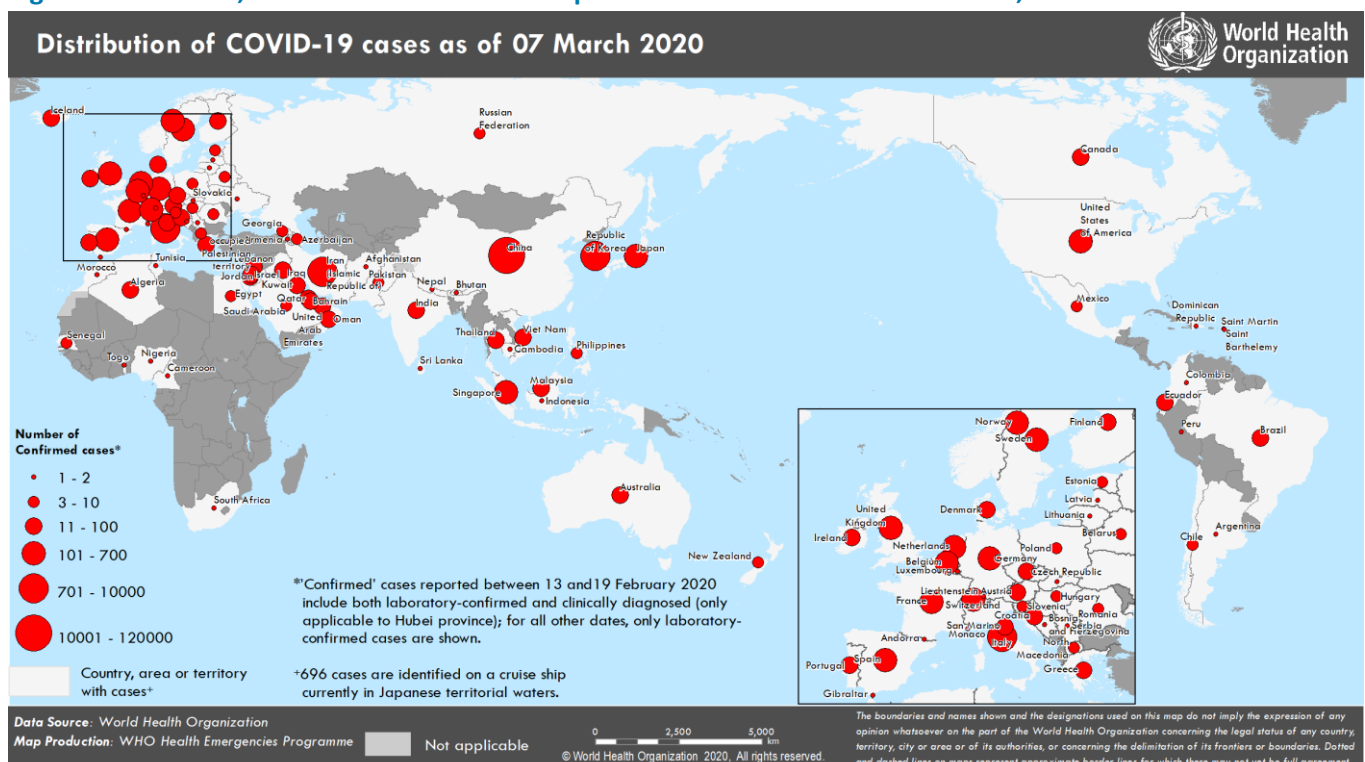
413 deaths (78 new)

93 Countries/territories/  
areas (5 new)

## WHO RISK ASSESSMENT

China	Very High
Regional Level	Very High
Global Level	Very High

Figure 1. Countries, territories or areas with reported confirmed cases of COVID-19, 07 March 2020



## SURVEILLANCE

**Table 1. Confirmed and suspected cases of COVID-19 acute respiratory disease reported by provinces, regions and cities in China, Data as of 07 March 2020**

Province/ Region/ City	Population (10,000s)	In last 24 hours			Cumulative	
		Confirmed cases	Suspected cases	Deaths	Confirmed cases	Deaths
Hubei	5917	74	47	28	67666	2959
Guangdong	11346	1	0	0	1352	7
Henan	9605	0	0	0	1272	22
Zhejiang	5737	0	0	0	1215	1
Hunan	6899	0	0	0	1018	4
Anhui	6324	0	0	0	990	6
Jiangxi	4648	0	0	0	935	1
Shandong	10047	0	0	0	758	6
Jiangsu	8051	0	0	0	631	0
Chongqing	3102	0	4	0	576	6
Sichuan	8341	0	0	0	539	3
Heilongjiang	3773	0	0	0	481	13
Beijing	2154	4	13	0	426	8
Shanghai	2424	3	16	0	342	3
Hebei	7556	0	0	0	318	6
Fujian	3941	0	0	0	296	1
Guangxi	4926	0	0	0	252	2
Shaanxi	3864	0	0	0	245	1
Yunnan	4830	0	0	0	174	2
Hainan	934	0	0	0	168	6
Guizhou	3600	0	0	0	146	2
Tianjin	1560	0	12	0	136	3
Shanxi	3718	0	0	0	133	0
Liaoning	4359	0	4	0	125	1
Gansu	2637	17	0	0	119	2
Hong Kong SAR	745	3	0	0	107	2
Jilin	2704	0	3	0	93	1
Xinjiang	2487	0	0	0	76	3
Inner Mongolia	2534	0	0	0	75	1
Ningxia	688	0	0	0	75	0
Taipei and environs	2359	0	0	0	45	1
Qinghai	603	0	0	0	18	0
Macao SAR	66	0	0	0	10	0
Xizang	344	0	0	0	1	0
<b>Total</b>	<b>142823</b>	<b>102</b>	<b>99</b>	<b>28</b>	<b>80813</b>	<b>3073</b>

**Table 2. Countries, territories or areas outside China with reported laboratory-confirmed COVID-19 cases and deaths. Data as of 07 March 2020\***

Reporting Country/ Territory/Area <sup>†</sup>	Total confirmed <sup>‡</sup> cases	Total confirmed new cases	Total deaths	Total new deaths	Transmission classification <sup>§</sup>	Days since last reported case
<b>Western Pacific Region</b>						
Republic of Korea	6767	483	44	2	Local transmission	0
Japan	408	59	6	0	Local transmission	0
Singapore	130	13	0	0	Local transmission	0
Malaysia	83	28	0	0	Local transmission	1
Australia	62	5	2	0	Local transmission	0
Viet Nam	17	1	0	0	Local transmission	0
New Zealand	5	1	0	0	Local transmission	0
Philippines	5	0	1	0	Local transmission	1
Cambodia	1	0	0	0	Imported cases only	39
<b>European Region</b>						
Italy	4636	778	197	49	Local transmission	0
Germany	639	105	0	0	Local transmission	0
France	613	193	9	3	Local transmission	0
Spain	374	117	5	2	Local transmission	0
Switzerland	209	123	1	0	Local transmission	0
The United Kingdom	167	49	1	1	Local transmission	0
Sweden	137	76	0	0	Local transmission	0
Netherlands	128	46	1	1	Local transmission	0
Norway	113	27	0	0	Local transmission	0
Belgium	109	59	0	0	Local transmission	0
Austria	66	19	0	0	Imported cases only	0
Iceland	45	19	0	0	Local transmission	0
Greece	32	0	0	0	Local transmission	2
San Marino	24	3	0	0	Local transmission	0
Denmark	23	5	0	0	Local transmission	0
Finland	19	7	0	0	Local transmission	0
Israel	19	4	0	0	Local transmission	0
Ireland	18	4	0	0	Local transmission	0
Portugal	13	4	0	0	Local transmission	0
Czechia	12	0	0	0	Local transmission	1
Croatia	11	1	0	0	Local transmission	0
Estonia	10	7	0	0	Imported cases only	0
Azerbaijan	9	6	0	0	Imported cases only	0
Georgia	9	0	0	0	Imported cases only	1
Slovenia	9	3	0	0	Local transmission	0
Romania	7	1	0	0	Local transmission	0
Russian Federation	7	3	0	0	Imported cases only	0
Belarus	6	0	0	0	Local transmission	2
Poland	5	4	0	0	Imported cases only	0
Hungary	5	3	0	0	Imported cases only	0
North Macedonia	3	2	0	0	Imported cases only	0
Bosnia and Herzegovina	2	0	0	0	Local transmission	2
Luxembourg	2	1	0	0	Imported cases only	0
Andorra	1	0	0	0	Imported cases only	4
Armenia	1	0	0	0	Imported cases only	5
Holy See	1	1	0	0	Under investigation	1

Latvia	1	0	0	0	Imported cases only	4
Liechtenstein	1	0	0	0	Imported cases only	1
Lithuania	1	0	0	0	Imported cases only	8
Monaco	1	0	0	0	Under investigation	6
Serbia	1	0	0	0	Under investigation	1
Slovakia	1	1	0	0	Local transmission	0
Ukraine	1	0	0	0	Imported cases only	3
<b>Territories**</b>						
Gibraltar	1	0	0	0	Under investigation	3
<b>South-East Asia Region</b>						
Thailand	48	1	1	0	Local transmission	0
India	31	1	0	0	Local transmission	0
Indonesia	2	0	0	0	Local transmission	5
Bhutan	1	0	0	0	Imported cases only	1
Nepal	1	0	0	0	Imported cases only	43
Sri Lanka	1	0	0	0	Imported cases only	40
<b>Eastern Mediterranean Region</b>						
Iran (Islamic Republic of)	4747	1234	124	17	Local transmission	0
Kuwait	58	0	0	0	Imported cases only	2
Bahrain	49	0	0	0	Imported cases only	4
United Arab Emirates	45	18	0	0	Local transmission	0
Iraq	44	8	4	2	Imported cases only	0
Lebanon	22	6	0	0	Local transmission	0
Oman	16	0	0	0	Imported cases only	1
Qatar	11	3	0	0	Imported cases only	0
Saudi Arabia	8	0	0	0	Imported cases only	1
Pakistan	5	0	0	0	Imported cases only	4
Egypt	3	0	0	0	Imported cases only	1
Morocco	2	0	0	0	Imported cases only	2
Afghanistan	1	0	0	0	Imported cases only	12
Jordan	1	0	0	0	Imported cases only	4
Tunisia	1	0	0	0	Imported cases only	4
<b>Territories**</b>						
Occupied Palestinian Territory	16	9	0	0	Local transmission	0
<b>Region of the Americas</b>						
United States of America	213	65	11	1	Local transmission	0
Canada	51	6	0	0	Local transmission	0
Ecuador	14	1	0	0	Local transmission	0
Brazil	13	6	0	0	Local transmission	0
Chile	5	4	0	0	Imported cases only	0
Mexico	5	0	0	0	Imported cases only	5
Argentina	2	1	0	0	Imported cases only	0
Colombia	1	1	0	0	Imported cases only	0
Dominican Republic	1	0	0	0	Imported cases only	5
Peru	1	1	0	0	Imported cases only	0
<b>Territories**</b>						
Saint Martin	2	0	0	0	Under investigation	4
Saint Barthelemy	1	0	0	0	Under investigation	4
<b>African Region</b>						

Algeria	17	5	0	0	Local transmission	0
Senegal	4	0	0	0	Imported cases only	2
Cameroon	2	1	0	0	Local transmission	0
Nigeria	1	0	0	0	Imported cases only	8
South Africa	1	0	0	0	Imported cases only	1
Togo	1	1	0	0	Imported cases only	0
<b>Subtotal for all regions</b>	<b>20418</b>	<b>3633</b>	<b>407</b>	<b>78</b>		
International conveyance (Diamond Princess)	696	0	6	0	Clusters of cases	1
<b>Grand total</b>	<b>21114</b>	<b>3633</b>	<b>413</b>	<b>78</b>		

\*Numbers include both domestic and repatriated cases

†The designations employed and the presentation of the material in this publication do not imply the expression of any opinion whatsoever on the part of WHO concerning the legal status of any country, territory, city or area or of its authorities, or concerning the delimitation of its frontiers or boundaries. Dotted and dashed lines on maps represent approximate border lines for which there may not yet be full agreement.

‡Case classifications are based on [WHO case definitions](#) for COVID-19.

§Transmission classification is based on WHO analysis of available official data and may be subject to reclassification as additional data become available. Countries/territories/areas experiencing multiple types of transmission are classified in the highest category for which there is evidence; they may be removed from a given category if interruption of transmission can be demonstrated. It should be noted that even within categories, different countries/territories/areas may have differing degrees of transmission as indicated by the differing numbers of cases and other factors. Not all locations within a given country/territory/area are equally affected.

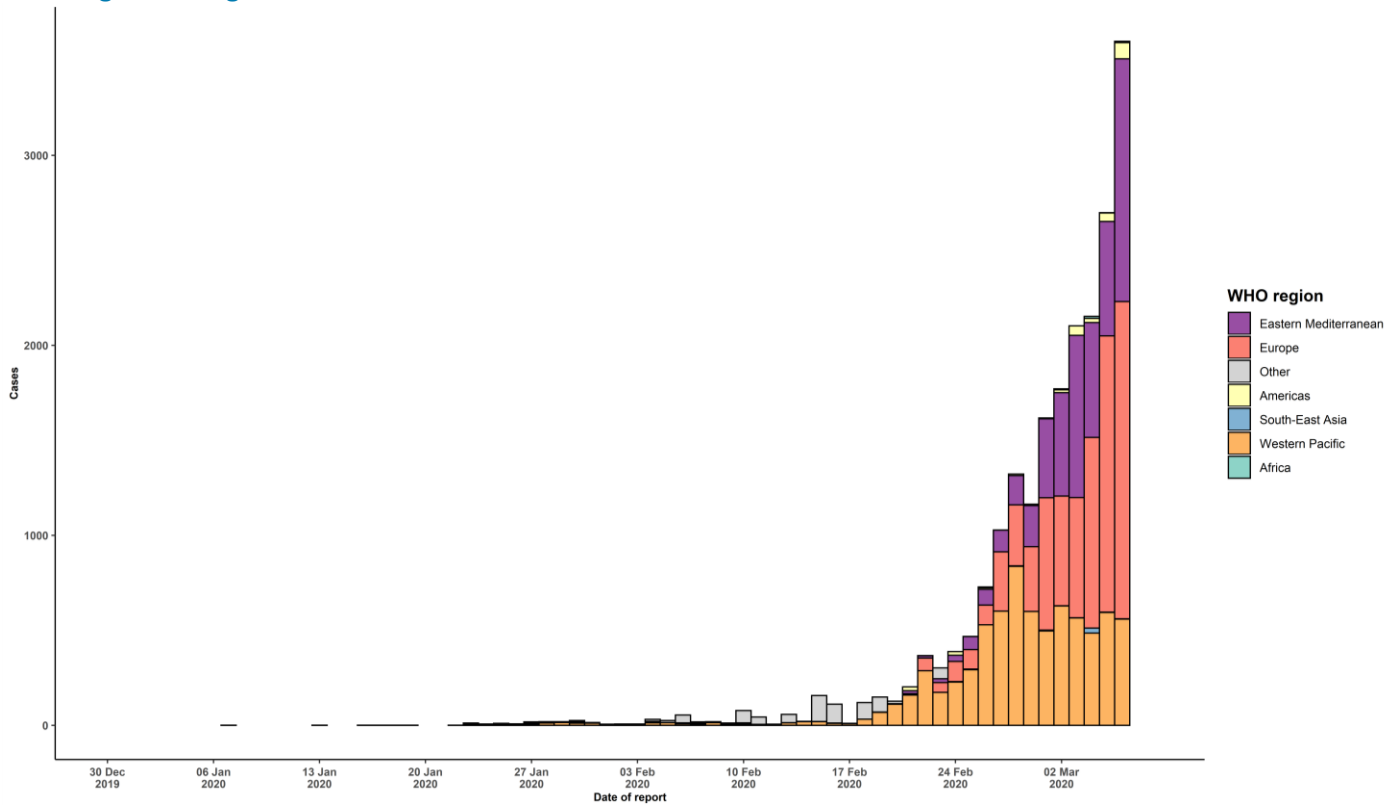
Terms:

- **Community transmission** is evidenced by the inability to relate confirmed cases through chains of transmission for a large number of cases, or by increasing positive tests through sentinel samples (routine systematic testing of respiratory samples from established laboratories).
- **Local transmission** indicates locations where the source of infection is within the reporting location.
- **Imported cases only** indicates locations where all cases have been acquired outside the location of reporting.
- **Under investigation** indicates locations where type of transmission has not been determined for any cases.
- **Interrupted transmission** indicates locations where interruption of transmission has been demonstrated (details to be determined)

\*\* "Territories" include territories, areas, overseas dependencies and other jurisdictions of similar status

Erratum: The transmission classification for Brazil has been corrected.

**Figure 2. Epidemic curve of confirmed COVID-19 cases reported outside of China (n=21,110), by date of report and WHO region through 07 March 2020**



## STRATEGIC OBJECTIVES

WHO's strategic objectives for this response are to:

- Interrupt human-to-human transmission including reducing secondary infections among close contacts and health care workers, preventing transmission amplification events, and preventing further international spread\*;
- Identify, isolate and care for patients early, including providing optimized care for infected patients;
- Identify and reduce transmission from the animal source;
- Address crucial unknowns regarding clinical severity, extent of transmission and infection, treatment options, and accelerate the development of diagnostics, therapeutics and vaccines;
- Communicate critical risk and event information to all communities and counter misinformation;
- Minimize social and economic impact through multisectoral partnerships.

\*This can be achieved through a combination of public health measures, such as rapid identification, diagnosis and management of the cases, identification and follow up of the contacts, infection prevention and control in health care settings, implementation of health measures for travelers, awareness-raising in the population and risk communication.

## PREPAREDNESS AND RESPONSE

- To view all technical guidance documents regarding COVID-19, please go to [this webpage](#).
- WHO has developed interim guidance for laboratory diagnosis, advice on the use of masks during home care and in health care settings in the context of the novel coronavirus (2019-nCoV) outbreak, clinical management, infection prevention and control in health care settings, home care for patients with suspected novel coronavirus, risk communication and community engagement and Global Surveillance for human infection with novel coronavirus (2019-nCoV).
- WHO is working closely with International Air Transport Association (IATA) and have jointly developed a guidance document to provide advice to cabin crew and airport workers, based on country queries. The guidance can be found on the [IATA webpage](#).
- WHO has been in regular and direct contact with Member States where cases have been reported. WHO is also informing other countries about the situation and providing support as requested.
- WHO is working with its networks of researchers and other experts to coordinate global work on surveillance, epidemiology, mathematical modelling, diagnostics and virology, clinical care and treatment, infection prevention and control, and risk communication. WHO has issued interim guidance for countries, which are updated regularly.
- WHO has prepared a [disease commodity package](#) that includes an essential list of biomedical equipment, medicines and supplies necessary to care for patients with 2019-nCoV.
- WHO has provided recommendations to reduce risk of [transmission from animals to humans](#).
- WHO has published an [updated advice for international traffic in relation to the outbreak of the novel coronavirus 2019-nCoV](#).
- WHO has activated the R&D blueprint to accelerate diagnostics, vaccines, and therapeutics.
- OpenWHO is an interactive, web-based, knowledge-transfer platform offering online courses to improve the response to health emergencies. [COVID-19 courses can be found here](#). Specifically, WHO has developed online courses on the following topics: A general introduction to emerging respiratory viruses, including novel coronaviruses (available in Arabic, English, French, Chinese, Spanish, Portuguese, and Russian); Critical Care of Severe Acute Respiratory Infections (available in English and French); Health and safety briefing for respiratory diseases - ePROTECT (available in English, French, and Russian); Infection Prevention and Control for Novel Coronavirus (COVID-19) (available in English and Russian); and COVID-19 Operational Planning Guidelines and COVID-19 Partners Platform to support country preparedness and response.
- WHO is providing guidance on early investigations, which are critical in an outbreak of a new virus. The data collected from the protocols can be used to refine recommendations for surveillance and case definitions, to characterize the key epidemiological transmission features of COVID-19, help understand spread, severity, spectrum of disease, impact on the community and to inform operational models for implementation of countermeasures such as case isolation, contact tracing and isolation. Several protocols are available [here](#). One such protocol is for the investigation of early COVID-19 cases and contacts (the "[First Few X \(FFX\) Cases and contact investigation protocol for 2019-novel coronavirus \(2019-nCoV\) infection](#)"). The protocol is designed to gain an early understanding of the key clinical, epidemiological and virological characteristics of the first cases of COVID-19 infection detected in any individual country, to inform the development and updating of public health guidance to manage cases and reduce the potential spread and impact of infection.

## RECOMMENDATIONS AND ADVICE FOR THE PUBLIC

If you are not in an area where COVID-19 is spreading or have not travelled from an area where COVID-19 is spreading or have not been in contact with an infected patient, your risk of infection is low. It is understandable that you may feel anxious about the outbreak. Get the facts from reliable sources to help you accurately determine your risks so that you can take reasonable precautions (see [Frequently Asked Questions](#)). Seek guidance from WHO, your

healthcare provider, your national public health authority or your employer for accurate information on COVID-19 and whether COVID-19 is circulating where you live. It is important to be informed of the situation and take appropriate measures to protect yourself and your family (see [Protection measures for everyone](#)).

If you are in an area where there are cases of COVID-19 you need to take the risk of infection seriously. Follow the advice of WHO and guidance issued by national and local health authorities. For most people, COVID-19 infection will cause mild illness however, it can make some people very ill and, in some people, it can be fatal. Older people, and those with pre-existing medical conditions (such as cardiovascular disease, chronic respiratory disease or diabetes) are at risk for severe disease (See [Protection measures for persons who are in or have recently visited \(past 14 days\) areas where COVID-19 is spreading](#)).

## CASE DEFINITIONS

WHO periodically updates the [Global Surveillance for human infection with coronavirus disease \(COVID-19\)](#) document which includes case definitions.

For easy reference, case definitions are included below.

### **Suspect case**

A. A patient with acute respiratory illness (fever and at least one sign/symptom of respiratory disease (e.g., cough, shortness of breath), AND with no other etiology that fully explains the clinical presentation AND a history of travel to or residence in a country/area or territory reporting local transmission (See [situation report](#)) of COVID-19 disease during the 14 days prior to symptom onset.

**OR**

B. A patient with any acute respiratory illness AND having been in contact with a confirmed or probable COVID-19 case (see definition of contact) in the last 14 days prior to onset of symptoms;

**OR**

C. A patient with severe acute respiratory infection (fever and at least one sign/symptom of respiratory disease (e.g., cough, shortness breath) AND requiring hospitalization AND with no other etiology that fully explains the clinical presentation.

### **Probable case**

A suspect case for whom testing for COVID-19 is inconclusive.

- Inconclusive being the result of the test reported by the laboratory

### **Confirmed case**

A person with laboratory confirmation of COVID-19 infection, irrespective of clinical signs and symptoms.

- Information regarding laboratory guidance can be found [here](#).