

# Coronavirus disease (COVID-19)

## Situation Report – 145

Data as received by WHO from national authorities by 10:00 CEST, 13 June 2020

### Highlights

As of 13 June 10am (CEST), Chinese authorities reported to WHO 12 new confirmed cases, among them 6 in Beijing. After 10am (CEST), Chinese authorities reported additional information about an ongoing investigation of further cases in Beijing. Information about the investigation in Beijing will be made available separately and additional cases reported in subsequent Situation Reports.

[Blood donations are vital during the current COVID-19 pandemic](#). The WHO Regional Director for the Americas, Dr Carissa F. Etienne said “The safest blood comes through voluntary unpaid donation from people like you and me. Donation is an act of solidarity and altruism, which the world needs now more than ever in the context of the COVID-19 pandemic”.

A COVID-19 survivor, a Stress Counsellor and a WHO Mental Health officer in Nigeria [share their experiences with stigma associated with COVID-19 and approaches to curb stigma associated with the disease](#).

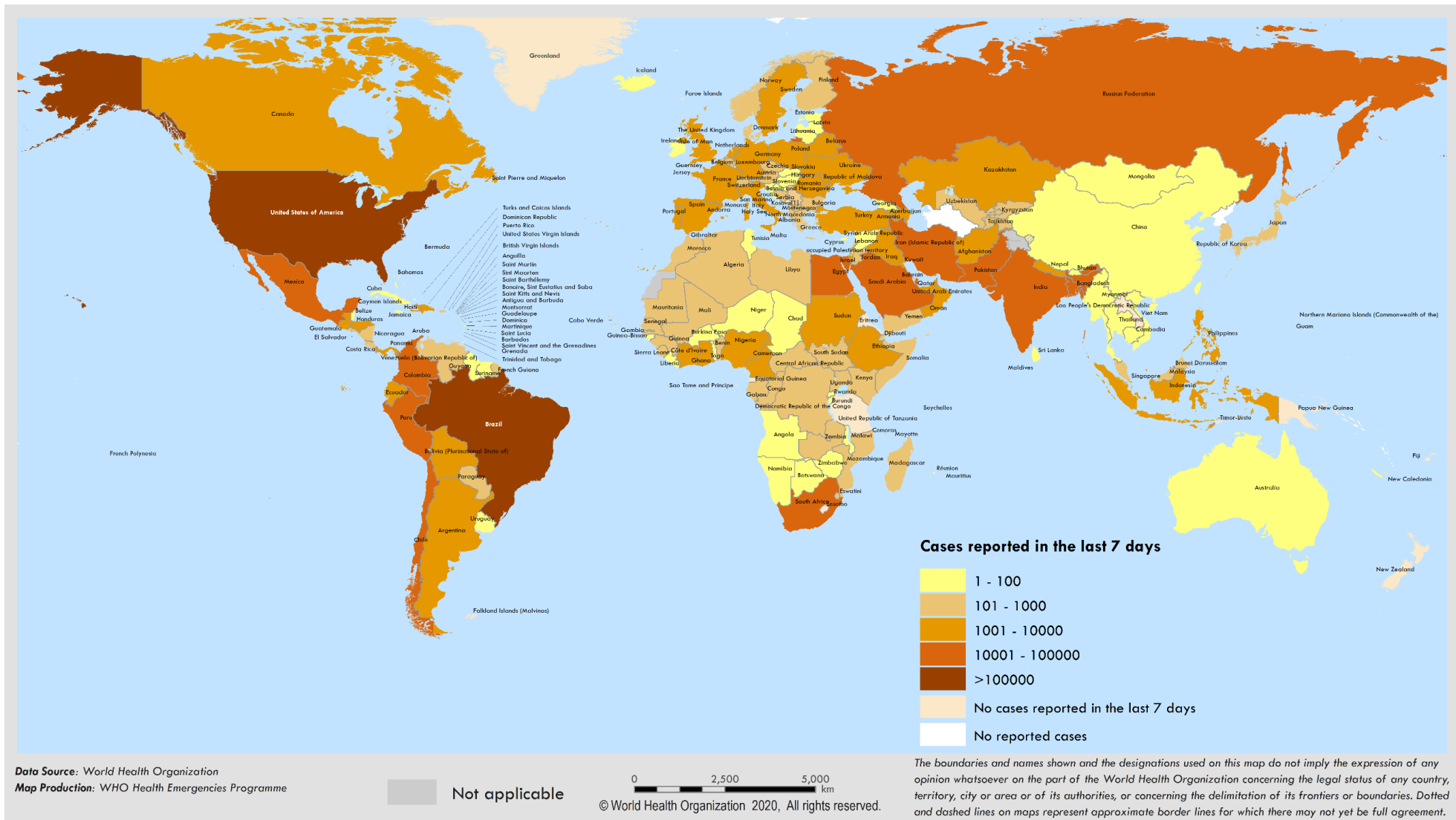
### Situation in numbers (by WHO Region)

Total (new cases in last 24 hours)

<b>Globally</b>	7 553 182 cases (142 672)	423 349 deaths (5 055)
<b>Africa</b>	161 254 cases (5 492)	3 867 deaths (167)
<b>Americas</b>	3 638 525 cases (77 934)	196 440 deaths (3 496)
<b>Eastern Mediterranean</b>	737 641 cases (21 490)	16 260 deaths (313)
<b>Europe</b>	2 378 958 cases (20 005)	187 468 deaths (579)
<b>South-East Asia</b>	439 348 cases (16 523)	12 126 deaths (481)
<b>Western Pacific</b>	196 715 cases (1 228)	7 175 deaths (19)

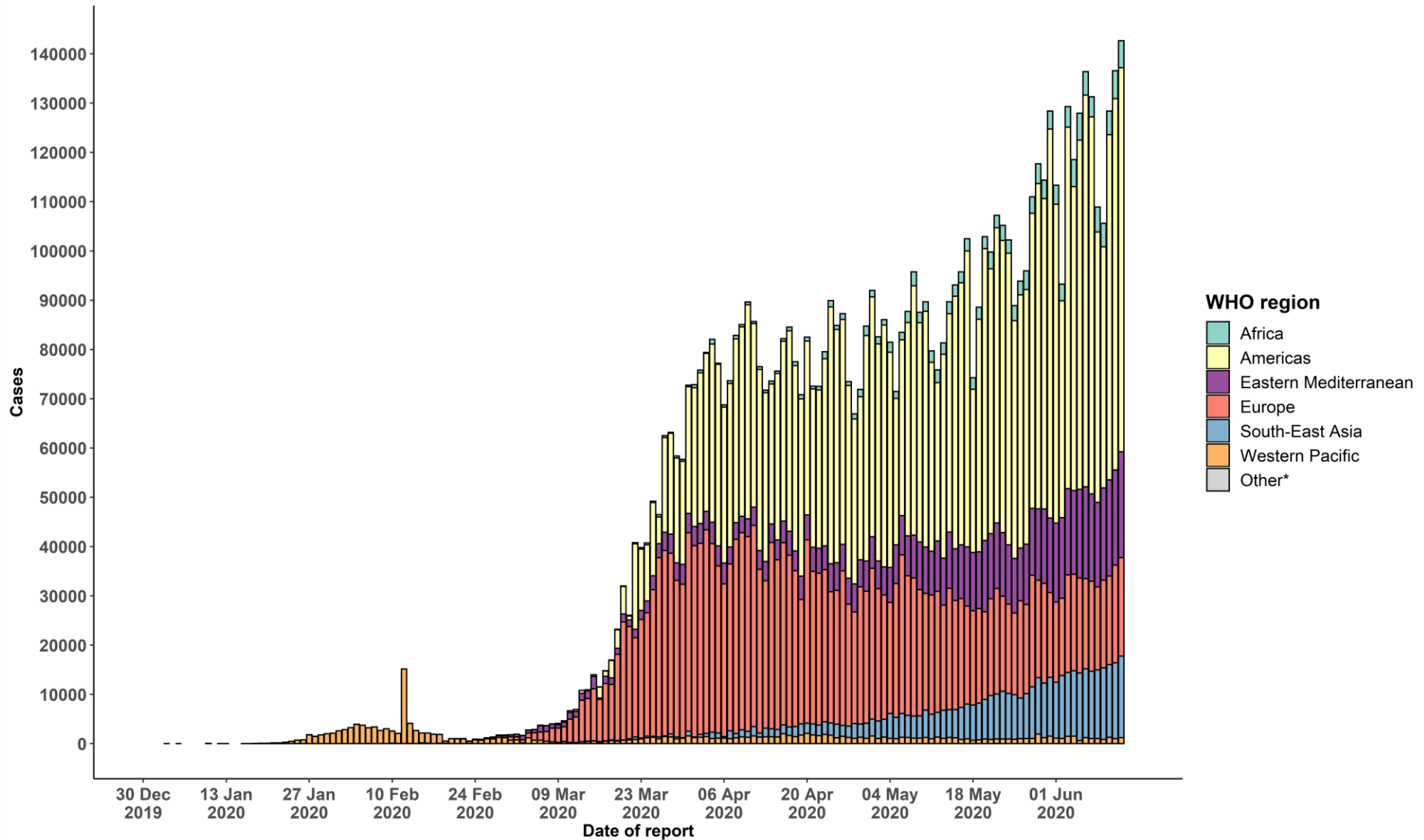
# Surveillance

Figure 1. Number of confirmed COVID-19 cases reported in the last seven days by country, territory or area, 07 June to 13 June\*\*



\*\*See [Annex 1](#) for data, table and figure notes.

Figure 2. Number of confirmed COVID-19 cases, by date of report and WHO region, 30 December through 13 June\*\*



\*\*See [Annex 1](#) for data, table and figure notes.

**Table 1. Countries, territories or areas with reported laboratory-confirmed COVID-19 cases and deaths, by WHO region. Data as of 10 AM CEST, 13 June 2020\*\***

Reporting Country/Territory/Area	Total confirmed cases	Total confirmed new cases	Total deaths	Total new deaths	Transmission classification <sup>i</sup>	Days since last reported case
<b>Africa</b>						
South Africa	61 927	3 359	1 354	70	Community transmission	0
Nigeria	14 554	0	387	0	Community transmission	1
Ghana	10 856	498	48	0	Community transmission	0
Algeria	10 698	109	751	10	Community transmission	0
Cameroon	8 743	62	270	55	Community transmission	0
Senegal	4 851	92	56	1	Community transmission	0
Côte d'Ivoire	4 684	280	45	4	Community transmission	0
Democratic Republic of the Congo	4 636	122	100	3	Community transmission	0
Guinea	4 426	54	24	1	Community transmission	0
Gabon	3 463	0	23	0	Community transmission	1
Kenya	3 305	90	96	4	Community transmission	0
Ethiopia	2 915	245	47	7	Clusters of cases	0
Central African Republic	2 057	13	7	2	Clusters of cases	0
Mali	1 752	30	101	4	Community transmission	0
South Sudan	1 670	64	22	0	Clusters of cases	0
Mauritania	1 439	156	74	3	Clusters of cases	0
Guinea-Bissau	1 389	0	12	0	Community transmission	4
Zambia	1 321	69	10	0	Community transmission	0
Madagascar	1 230	27	10	0	Clusters of cases	0
Sierra Leone	1 103	18	51	1	Community transmission	0
Equatorial Guinea	1 043	0	12	0	Community transmission	20

Reporting Country/Territory/Area	Total confirmed cases	Total confirmed new cases	Total deaths	Total new deaths	Transmission classification <sup>1</sup>	Days since last reported case
Niger	978	4	65	0	Community transmission	0
Burkina Faso	892	1	53	0	Community transmission	0
Chad	848	0	72	0	Community transmission	1
Uganda	808	0	0	0	Sporadic cases	1
Congo	745	0	25	0	Community transmission	1
Cabo Verde	697	40	6	0	Clusters of cases	0
Togo	524	2	13	0	Community transmission	0
Rwanda	510	16	2	0	Sporadic cases	0
Mozambique	509	20	2	0	Clusters of cases	0
United Republic of Tanzania	509	0	21	0	Community transmission	36
Malawi	481	0	4	0	Clusters of cases	1
Eswatini	472	23	3	0	Clusters of cases	0
Liberia	421	11	32	1	Community transmission	0
Benin	412	22	6	1	Community transmission	0
São Tomé and Príncipe	388	0	10	0	Clusters of cases	2
Zimbabwe	343	11	4	0	Sporadic cases	0
Mauritius	337	0	10	0	Clusters of cases	7
Comoros	163	1	2	0	Community transmission	0
Angola	130	12	5	0	Clusters of cases	0
Burundi	94	0	1	0	Clusters of cases	1
Botswana	60	12	1	0	Clusters of cases	0
Eritrea	41	0	0	0	Sporadic cases	8
Namibia	31	0	0	0	Sporadic cases	4

Reporting Country/Territory/Area	Total confirmed cases	Total confirmed new cases	Total deaths	Total new deaths	Transmission classification <sup>1</sup>	Days since last reported case
Gambia	28	0	1	0	Sporadic cases	4
Seychelles	11	0	0	0	Clusters of cases	67
Lesotho	4	0	0	0	Sporadic cases	9
<b>Territories<sup>ii</sup></b>						
Mayotte	2 268	28	28	0	Clusters of cases	0
Réunion	488	1	1	0	Clusters of cases	0
<b>Americas</b>						
United States of America	2 010 391	21 745	113 757	947	Community transmission	0
Brazil	802 828	30 412	40 919	1 239	Community transmission	0
Peru	214 788	5 965	6 109	206	Community transmission	0
Chile	160 846	6 754	2 870	222	Community transmission	0
Mexico	133 974	4 790	15 944	587	Community transmission	0
Canada	97 530	405	7 994	34	Community transmission	0
Ecuador	45 778	1 338	3 828	108	Community transmission	0
Colombia	45 212	1 530	1 488	55	Community transmission	0
Argentina	27 373	1 386	772	31	Community transmission	0
Dominican Republic	22 008	571	568	7	Community transmission	0
Panama	18 586	697	418	5	Community transmission	0
Bolivia (Plurinational State of)	16 165	884	533	21	Community transmission	0
Guatemala	8 561	340	334	18	Community transmission	0
Honduras	7 669	309	294	4	Community transmission	0
Haiti	3 941	145	64	6	Community transmission	0
El Salvador	3 481	108	68	4	Community transmission	0
Venezuela (Bolivarian Republic of)	2 814	76	23	0	Community transmission	0

Reporting Country/Territory/Area	Total confirmed cases	Total confirmed new cases	Total deaths	Total new deaths	Transmission classification <sup>i</sup>	Days since last reported case
Cuba	2 233	14	84	0	Clusters of cases	0
Nicaragua	1 655	0	55	0	Community transmission	2
Costa Rica	1 538	77	12	0	Clusters of cases	0
Paraguay	1 254	24	11	0	Community transmission	0
Uruguay	847	0	23	0	Clusters of cases	1
Jamaica	611	13	10	0	Clusters of cases	0
Suriname	168	24	2	0	Clusters of cases	0
Guyana	158	2	12	0	Clusters of cases	0
Trinidad and Tobago	117	0	8	0	Sporadic cases	12
Bahamas	103	0	11	0	Clusters of cases	6
Barbados	96	0	7	0	Clusters of cases	2
Saint Vincent and the Grenadines	27	0	0	0	Sporadic cases	4
Antigua and Barbuda	25	0	3	0	Clusters of cases	40
Grenada	23	0	0	0	Clusters of cases	17
Belize	20	0	2	0	Sporadic cases	2
Saint Lucia	19	0	0	0	Sporadic cases	7
Dominica	18	2	0	0	Clusters of cases	0
Saint Kitts and Nevis	15	0	0	0	Sporadic cases	53
<b>Territories<sup>ii</sup></b>						
Puerto Rico	5 536	184	146	2	Community transmission	0
French Guiana	1 043	126	2	0	Clusters of cases	0
Martinique	202	0	14	0	Clusters of cases	6
Cayman Islands	186	6	1	0	Clusters of cases	0
Guadeloupe	171	7	14	0	Clusters of cases	0

Reporting Country/Territory/Area	Total confirmed cases	Total confirmed new cases	Total deaths	Total new deaths	Transmission classification <sup>1</sup>	Days since last reported case
Bermuda	141	0	9	0	Clusters of cases	10
Aruba	101	0	3	0	No cases	38
Sint Maarten	77	0	15	0	Sporadic cases	7
United States Virgin Islands	72	0	6	0	Clusters of cases	2
Saint Martin	41	0	3	0	Sporadic cases	13
Curaçao	22	0	1	0	Sporadic cases	2
Falkland Islands (Malvinas)	13	0	0	0	Clusters of cases	48
Turks and Caicos Islands	12	0	1	0	Sporadic cases	46
Montserrat	11	0	1	0	Sporadic cases	60
British Virgin Islands	8	0	1	0	Sporadic cases	28
Bonaire, Sint Eustatius and Saba	7	0	0	0	No cases	18
Saint Barthélemy	6	0	0	0	Sporadic cases	74
Anguilla	3	0	0	0	Sporadic cases	70
Saint Pierre and Miquelon	1	0	0	0	Sporadic cases	66
<b>Eastern Mediterranean</b>						
Iran (Islamic Republic of)	182 545	2 369	8 659	75	Community transmission	0
Pakistan	132 405	6 884	2 551	88	Clusters of cases	0
Saudi Arabia	119 942	3 921	893	36	Clusters of cases	0
Qatar	76 588	1 517	70	1	Community transmission	0
United Arab Emirates	41 499	513	287	1	Pending	0
Egypt	41 303	1 577	1 422	27	Clusters of cases	0
Kuwait	34 952	520	285	6	Clusters of cases	0
Afghanistan	24 102	556	451	5	Clusters of cases	0
Oman	21 071	1 117	96	7	Clusters of cases	0



Reporting Country/Territory/Area	Total confirmed cases	Total confirmed new cases	Total deaths	Total new deaths	Transmission classification <sup>i</sup>	Days since last reported case
Iraq	17 770	1 095	496	39	Clusters of cases	0
Bahrain	17 713	1 046	36	2	Clusters of cases	0
Morocco	8 610	73	212	1	Clusters of cases	0
Sudan	6 879	149	433	20	Community transmission	0
Djibouti	4 441	43	38	1	Clusters of cases	0
Somalia	2 513	0	85	0	Sporadic cases	1
Lebanon	1 422	20	31	0	Clusters of cases	0
Tunisia	1 093	6	49	0	Community transmission	0
Jordan	915	25	9	0	Clusters of cases	0
Yemen	636	41	140	3	Pending	0
Libya	409	16	6	1	Clusters of cases	0
Syrian Arab Republic	164	0	6	0	Community transmission	1
<b>Territories<sup>ii</sup></b>						
occupied Palestinian territory	669	2	5	0	Clusters of cases	0
<b>Europe</b>						
Russian Federation	520 129	8 706	6 829	114	Clusters of cases	0
The United Kingdom	292 954	1 541	41 481	202	Community transmission	0
Spain	243 209	502	27 136	0	Community transmission	0
Italy	236 305	163	34 223	56	Community transmission	0
Germany	186 022	348	8 781	18	Community transmission	0
Turkey	175 218	1 195	4 778	15	Community transmission	0
France	152 067	564	29 312	28	Community transmission	0
Belgium	59 819	108	9 646	10	Community transmission	0
Belarus	52 520	704	298	5	Community transmission	0

Reporting Country/Territory/Area	Total confirmed cases	Total confirmed new cases	Total deaths	Total new deaths	Transmission classification <sup>1</sup>	Days since last reported case
Sweden	49 684	1 396	4 854	40	Community transmission	0
Netherlands	48 461	210	6 053	9	Community transmission	0
Portugal	36 180	270	1 505	1	Community transmission	0
Switzerland	30 980	19	1 676	2	Community transmission	0
Ukraine	30 506	753	880	10	Community transmission	0
Poland	28 577	376	1 222	7	Community transmission	0
Ireland	25 250	12	1 705	2	Community transmission	0
Romania	21 404	222	1 380	11	Community transmission	0
Israel	18 701	240	300	0	Pending	0
Austria	16 994	30	675	1	Community transmission	0
Armenia	16 004	723	264	6	Community transmission	0
Kazakhstan	14 238	366	70	3	Clusters of cases	0
Serbia	12 175	73	252	0	Pending	0
Denmark	12 099	64	594	1	Community transmission	0
Republic of Moldova	11 093	366	395	20	Community transmission	0
Czechia	9 938	52	329	0	Clusters of cases	0
Azerbaijan	9 218	336	113	5	Clusters of cases	0
Norway	8 606	12	242	0	Clusters of cases	0
Finland	7 073	9	325	0	Pending	0
Tajikistan	4 902	68	49	0	Pending	0
Uzbekistan	4 901	82	19	0	Clusters of cases	0
Luxembourg	4 055	3	110	0	Clusters of cases	0
Hungary	4 053	14	555	2	Community transmission	0
North Macedonia	3 706	164	171	2	Clusters of cases	0

Reporting Country/Territory/Area	Total confirmed cases	Total confirmed new cases	Total deaths	Total new deaths	Transmission classification <sup>i</sup>	Days since last reported case
Bulgaria	3 191	105	172	4	Clusters of cases	0
Greece	3 108	20	183	0	Clusters of cases	0
Bosnia and Herzegovina	2 892	61	162	2	Community transmission	0
Croatia	2 249	0	107	1	Sporadic cases	2
Kyrgyzstan	2 207	41	27	1	Clusters of cases	0
Estonia	1 970	5	69	0	Sporadic cases	0
Iceland	1 807	0	10	0	Community transmission	5
Lithuania	1 756	4	74	0	Community transmission	0
Slovakia	1 542	1	28	0	Clusters of cases	0
Slovenia	1 490	2	109	0	Clusters of cases	0
Albania	1 464	48	36	0	Clusters of cases	0
Latvia	1 096	2	27	1	Clusters of cases	0
Cyprus	980	5	18	0	Clusters of cases	0
Andorra	853	1	51	0	Community transmission	0
Georgia	851	14	13	0	Community transmission	0
San Marino	695	0	42	0	Community transmission	8
Malta	645	5	9	0	Sporadic cases	0
Montenegro	324	0	9	0	Clusters of cases	38
Monaco	99	0	1	0	Sporadic cases	6
Liechtenstein	83	0	1	0	Pending	48
Holy See	12	0	0	0	Sporadic cases	37
<b>Territories<sup>ii</sup></b>						
Kosovo <sup>[1]</sup>	1 326	0	31	0	Community transmission	1
Isle of Man	336	0	24	0	Pending	22

Reporting Country/Territory/Area	Total confirmed cases	Total confirmed new cases	Total deaths	Total new deaths	Transmission classification <sup>1</sup>	Days since last reported case
Jersey	313	0	30	0	Community transmission	3
Guernsey	252	0	13	0	Community transmission	41
Faroe Islands	187	0	0	0	Pending	50
Gibraltar	176	0	0	0	Clusters of cases	4
Greenland	13	0	0	0	Pending	15
<b>South-East Asia</b>						
India	308 993	11 458	8 884	386	Clusters of cases	0
Bangladesh	81 523	3 471	1 095	46	Community transmission	0
Indonesia	36 406	1 111	2 048	48	Community transmission	0
Nepal	5 062	448	16	1	Sporadic cases	0
Thailand	3 134	5	58	0	Clusters of cases	0
Maldives	2 003	27	8	0	Clusters of cases	0
Sri Lanka	1 880	3	11	0	Clusters of cases	0
Myanmar	261	0	6	0	Clusters of cases	1
Bhutan	62	0	0	0	Sporadic cases	2
Timor-Leste	24	0	0	0	Clusters of cases	50
<b>Western Pacific</b>						
China	84 671	12	4 645	0	Clusters of cases	0
Singapore	39 850	463	25	0	Clusters of cases	0
Philippines	24 787	612	1 052	16	Community transmission	0
Japan	17 382	50	924	2	Clusters of cases	0
Republic of Korea	12 051	48	277	0	Clusters of cases	0
Malaysia	8 402	33	119	1	Clusters of cases	0

Reporting Country/Territory/Area	Total confirmed cases	Total confirmed new cases	Total deaths	Total new deaths	Transmission classification <sup>i</sup>	Days since last reported case
Australia	7 290	5	102	0	Clusters of cases	0
New Zealand	1 154	0	22	0	Clusters of cases	22
Viet Nam	332	0	0	0	Clusters of cases	4
Mongolia	197	3	0	0	Sporadic cases	0
Brunei Darussalam	141	0	2	0	Clusters of cases	36
Cambodia	126	0	0	0	Sporadic cases	6
Lao People's Democratic Republic	19	0	0	0	Sporadic cases	61
Fiji	18	0	0	0	Sporadic cases	53
Papua New Guinea	8	0	0	0	Sporadic cases	51
<b>Territories<sup>ii</sup></b>						
Guam	176	2	5	0	Clusters of cases	0
French Polynesia	60	0	0	0	Sporadic cases	38
Northern Mariana Islands (Commonwealth of the)	30	0	2	0	Pending	3
New Caledonia	21	0	0	0	Sporadic cases	3
<b>Subtotal for all regions</b>	<b>7 552 441</b>	<b>142 672</b>	<b>423 336</b>	<b>5 055</b>		
Other*	741	0	13	0	Not applicable	-
<b>Grand total</b>	<b>7 553 182</b>	<b>142 672</b>	<b>423 349</b>	<b>5 055</b>		

\*\*See [Annex 1](#) for data, table and figure notes.

---

## Technical guidance and other resources

- To view all technical guidance documents regarding COVID-19, please go to [this webpage](#).
- Updates from WHO regional offices
  - [WHO AFRO](#)
  - [WHO EMRO](#)
  - [WHO EURO](#)
  - [WHO PAHO](#)
  - [WHO SEARO](#)
  - [WHO WPRO](#)
- [Research and Development](#)
- [Online courses on COVID-19](#) and in [additional national languages](#)
- [The Strategic Preparedness and Response Plan](#) (SPRP) outlining the support the international community can provide to all countries to prepare and respond to the virus
- [WHO Coronavirus Disease \(COVID-19\) Dashboard](#)
- [Weekly COVID-19 Operations Updates](#)

---

## Recommendations and advice for the public

- [Protect yourself](#)
- [Questions and answers](#)
- [Travel advice](#)
- [EPI-WIN](#): tailored information for individuals, organizations and communities

---

## Case definitions

WHO periodically updates the [Global Surveillance for human infection with coronavirus disease \(COVID-19\)](#) document which includes surveillance definitions.

### Definition of COVID-19 death

A COVID-19 death is defined for surveillance purposes as a death resulting from a clinically compatible illness in a probable or confirmed COVID-19 case, unless there is a clear alternative cause of death that cannot be related to COVID-19 disease (e.g. trauma). There should be no period of complete recovery between the illness and death.

Further guidance for certification and classification (coding) of COVID-19 as cause of death is available [here](#) and [here](#).

---

## Annex 1: Data, table and figure notes

Caution must be taken when interpreting all data presented. Differences are to be expected between information products published by WHO, national public health authorities, and other sources using different inclusion criteria and different data cut-off times. While steps are taken to ensure accuracy and reliability, all data are subject to continuous verification and change. Case detection, definitions, testing strategies, reporting practice, and lag times differ between countries/territories/areas. These factors, amongst others, influence the counts presented, with variable underestimation of true case and death counts, and variable delays to reflecting these data at global level.

The designations employed, and the presentation of these materials do not imply the expression of any opinion whatsoever on the part of WHO concerning the legal status of any country, territory or area or of its authorities, or concerning the delimitation of its frontiers or boundaries. Dotted and dashed lines on maps represent approximate border lines for which there may not yet be full agreement. Countries, territories and areas are arranged under the administering WHO region.

The mention of specific companies or of certain manufacturers' products does not imply that they are endorsed or recommended by WHO in preference to others of a similar nature that are not mentioned. Errors and omissions excepted, the names of proprietary products are distinguished by initial capital letters.

<sup>[1]</sup> All references to Kosovo should be understood to be in the context of the United Nations Security Council resolution 1244 (1999). In the map, number of cases of Serbia and Kosovo (UNSCR 1244, 1999) have been aggregated for visualization purposes.

Counts reflect laboratory-confirmed cases and deaths, based on [WHO case definitions](#), unless stated otherwise (see Country, territory, or area-specific updates and errata), and include both domestic and repatriated cases.

Other\*: includes cases reported from international conveyances.

Due to the recent trend of countries conducting data reconciliation exercises which remove large numbers of cases or deaths from their total counts, WHO will now display such data as negative numbers in the "new cases" / "new deaths" columns as appropriate. This will aid readers in identifying when such adjustments occur. When additional details become available that allow the subtractions to be suitably apportioned to previous days, graphics will be updated accordingly. Prior situation reports will not be edited; see [covid19.who.int](https://covid19.who.int) for the most up-to-date data.

### Additional table notes

<sup>i</sup> Transmission classification is based on a process of country/territory/area self-reporting. Classifications are reviewed on a weekly basis and may be revised as new information becomes available. Differing degrees of transmission may be present within countries/territories/areas; classification is based on the highest category reported within a country/territory/area. Categories:

- No cases: with no confirmed cases
- Sporadic cases: with one or more cases, imported or locally detected
- Clusters of cases: experiencing cases, clustered in time, geographic location and/or by common exposures

- Community transmission: experiencing larger outbreaks of local transmission defined through an assessment of factors including, but not limited to: large numbers of cases not linkable to transmission chains; large numbers of cases from sentinel lab surveillance; and/or multiple unrelated clusters in several areas of the country/territory/area
- Pending: transmission classification has not been reported to WHO

ii “Territories” include territories, areas, overseas dependencies and other jurisdictions of similar status.

**Country, territory, or area-specific updates and errata**

- None