

Coronavirus disease (COVID-19)

Situation Report – 149

Data as received by WHO from national authorities by 10:00 CEST, 17 June 2020

Highlights

WHO welcomes [initial clinical trial results from the United Kingdom that show dexamethasone, a corticosteroid, can be lifesaving for patients who are critically ill with COVID-19](#). According to preliminary findings shared with WHO, for patients on ventilators, the treatment was shown to reduce mortality by about one third, and for patients who only require oxygen, mortality was cut by about one fifth.

[Older people have been severely affected](#) by the COVID-19 pandemic. Leaders from around the world have expressed their concern, and called for a response that addresses the needs and rights of older people.

Dr. Carissa F. Etienne, Director of the WHO Regional Office for the Americas (PAHO), has called on countries to “[work together to strengthen the health response within their territories and across frontiers](#),” in order to contain the spread of COVID-19 among migrant and vulnerable populations in border areas.

[PAHO has extended its alliance with Twitter](#) to provide factual, reliable information on the COVID-19 pandemic in the Americas. An agreement recently signed with the platform will enable it to continue training public health social media managers and provide advertising credits to PAHO for the dissemination of evidence-based information.

In today’s ‘[Subject in Focus](#)’ below, we provide an update on operations support and logistics supplies.

Situation in numbers (by WHO Region)

Total (new cases in last 24 hours)

Globally	8 061 550 cases (119 759)	440 290 deaths (5 494)
Africa	187 625 cases (5 722)	4 346 deaths (111)
Americas	3 899 859 cases (58 250)	205 555 deaths (1 981)
Eastern Mediterranean	817 458 cases (20 699)	18 057 deaths (499)
Europe	2 452 247 cases (18 063)	189 582 deaths (803)
South-East Asia	503 034 cases (16 361)	15 498 deaths (2 089)
Western Pacific	200 586 cases (664)	7 239 deaths (11)

Subject in Focus: WHO support to the COVID-19 response in Africa

Since the first COVID-19 case was reported in Africa in mid-February, the pace of the outbreak has accelerated, taking 98 days to reach the first 100 000 cases and only 19 days to rise to 200 000 cases.

As of 11 June, more than 200 000 cases of COVID-19 and more than 5600 deaths have been reported from Africa – a nearly 30% increase in cases as compared to the previous week.

Many countries have put in place lockdowns and public health measures to promote physical distancing, good hand hygiene and isolating cases and testing and tracing of contacts of people with COVID-19. With the support of WHO and other partners, governments also rapidly scaled up health workforce and laboratory capacities, and set up points-of-entry screening at airports and border crossings.

Over the past week, WHO Regional Office for Africa has supported the rollout of a Partnership to Accelerate Testing in Africa (PACT) to increase testing, tracing and treatment in the region. The initiative aims to train 100 000 health workers, test up to 15 million people per month for next six months and support provision of supportive care to patients.

Since the start of the COVID-19 outbreak, WHO has partnered with the Africa Centres for Disease Control and Prevention (CDC) to provide technical support and coordinate the distribution of medical supplies for the COVID-19 response across Africa.

Africa CDC is also an active partner in the diagnostics purchasing consortium convened by WHO to approach markets through a pooled procurement process in order to access and secure testing supplies amidst unprecedented global demand in response to the COVID-19 pandemic.

Through the consortium, WHO Operations Support and Logistics (OSL) has secured from a number of manufacturers of manual polymerase chain reaction (PCR) tests and has begun shipping to Africa the following diagnostic supplies:

- 227 752 polymerase chain reaction (PCR) tests
- 104 000 sample collection kits

An additional 857 100 PCR tests and 780 300 sample collection kits have been prepared and are awaiting shipment.

WHO, in collaboration with the World Food Programme (WFP), which is distributing personal protective equipment (PPE) cargo for the global COVID-19 response, is in the process of shipping to countries across Africa massive volumes of PPE, including:

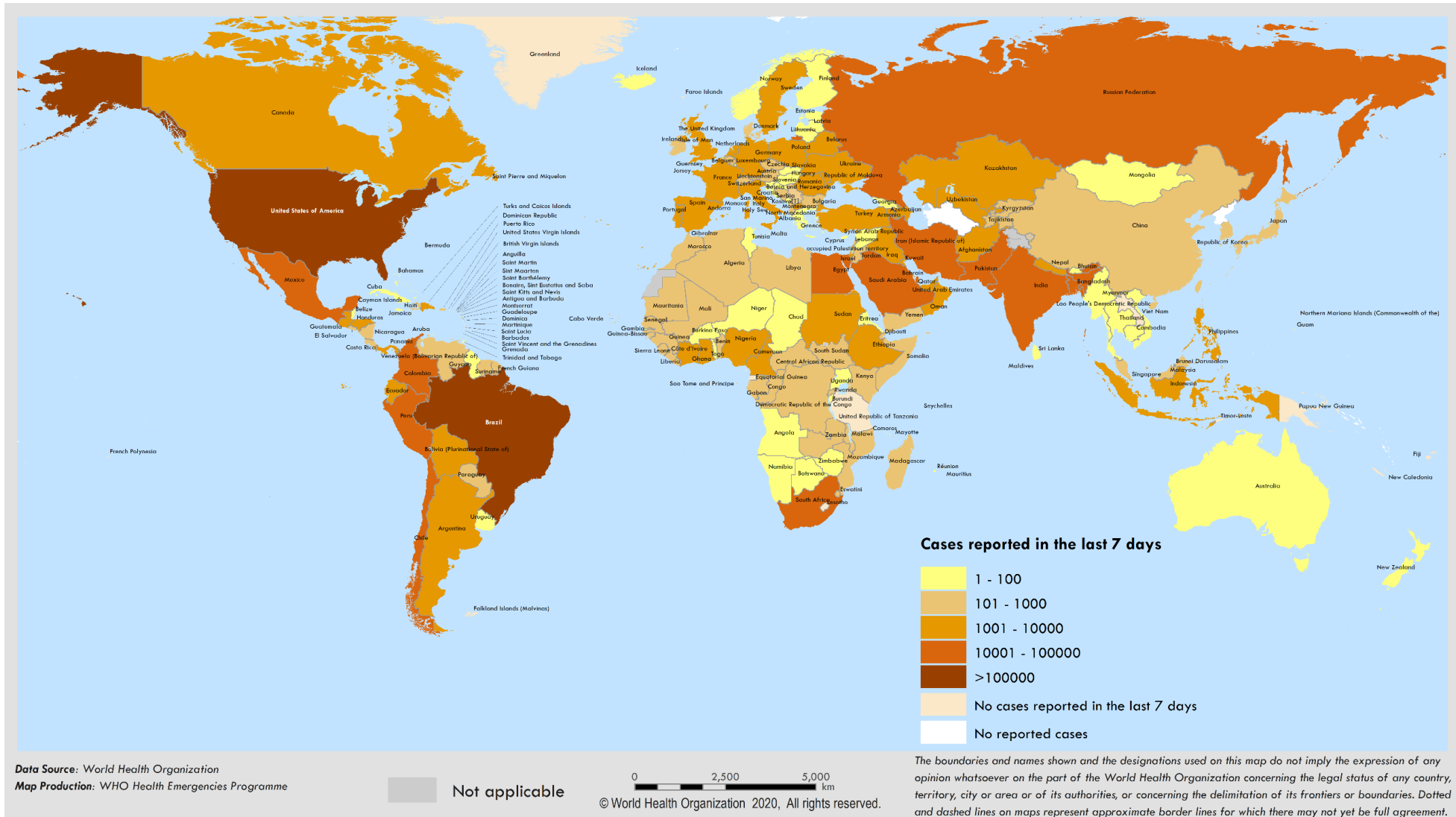
- 10.8 million medical masks
- 1.3 million N95 respirator masks
- 938 157 gowns
- 103 544 goggles
- 7.5 million examination gloves
- 741 334 face shields

WHO's pooled procurement process to secure biomedical equipment for clinical care, which has been especially difficult to procure amidst a global shortage, has also yielded results in recent weeks. WHO has procured 2,522 oxygen concentrators and 487 ventilators, for WFP to deliver across the region.

WHO's OSL unit, with the voluntary support of a technical network of architects and engineers, is also supporting the design of COVID-19 treatment centres in a number of countries in Africa. Working with Ministry of Health and other UN partners, the OSL's technical HelpDesk has supported the establishment of COVID-19 treatment centres in Senegal, Tanzania, Burkina Faso, Sao Tome and Principe, Nigeria, Republic of Congo, Ivory Coast, Tanzania, Mauritius and Ghana. Presently, OSL is working with to support a 26-bed facility in Chad, a 30-bed facility in Burkina Faso, and a 500-bed facility in Equatorial Guinea.

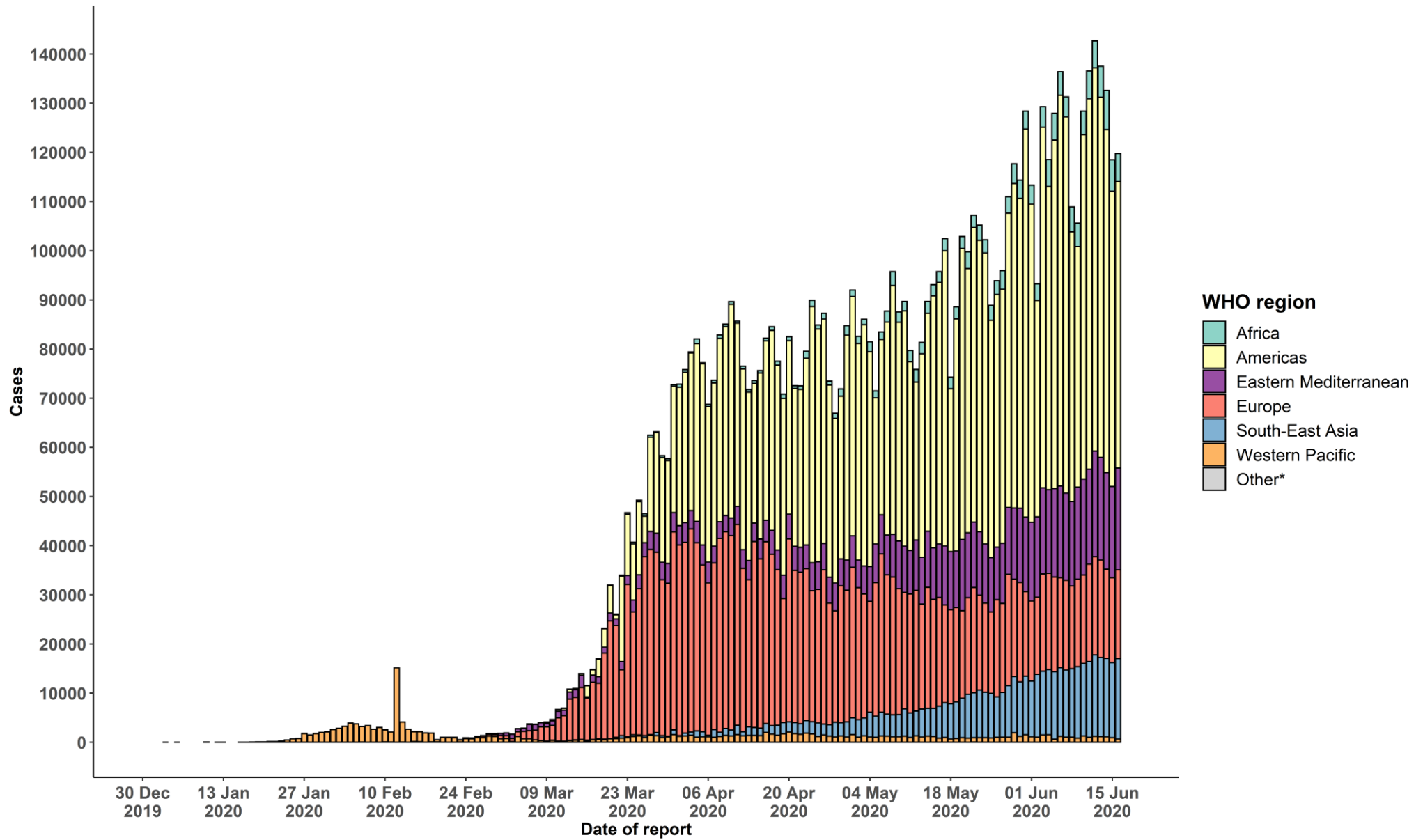
Surveillance

Figure 1. Number of confirmed COVID-19 cases reported in the last seven days by country, territory or area, 11 June to 17 June**



**See [Annex 1](#) for data, table and figure notes.

Figure 2. Number of confirmed COVID-19 cases, by date of report and WHO region, 30 December through 17 June**



**See [Annex 1](#) for data, table and figure notes.

Table 1. Countries, territories or areas with reported laboratory-confirmed COVID-19 cases and deaths, by WHO region. Data as of 10 AM CEST, 17 June 2020**

Reporting Country/ Territory/Area	Total confirmed cases	Total confirmed new cases	Total deaths	Total new deaths	Transmission classification ⁱ	Days since last reported case
Africa						
South Africa	76 334	2 801	1 625	57	Community transmission	0
Nigeria	17 148	490	424	0	Community transmission	0
Ghana	12 193	229	58	4	Community transmission	0
Algeria	11 147	116	788	11	Community transmission	0
Cameroon	9 864	0	276	0	Community transmission	1
Côte d'Ivoire	5 679	595	46	1	Community transmission	0
Senegal	5 247	157	70	10	Community transmission	0
Democratic Republic of the Congo	4 973	196	111	5	Community transmission	0
Guinea	4 639	67	26	0	Community transmission	0
Gabon	4 114	81	29	2	Community transmission	0
Kenya	3 860	133	105	1	Community transmission	0
Ethiopia	3 630	109	61	1	Community transmission	0
Central African Republic	2 410	188	14	7	Community transmission	0
Mauritania	1 887	104	91	4	Clusters of cases	0
Mali	1 885	25	106	2	Community transmission	0
South Sudan	1 776	21	30	0	Clusters of cases	0
Guinea-Bissau	1 492	32	15	0	Community transmission	0
Zambia	1 405	23	11	0	Community transmission	0
Madagascar	1 317	27	12	2	Clusters of cases	0
Sierra Leone	1 225	49	51	0	Community transmission	0
Equatorial Guinea	1 043	0	12	0	Community transmission	24

Reporting Country/ Territory/Area	Total confirmed cases	Total confirmed new cases	Total deaths	Total new deaths	Transmission classification ¹	Days since last reported case
Niger	1 016	36	66	0	Community transmission	0
Burkina Faso	895	1	53	0	Community transmission	0
Congo	883	0	27	0	Community transmission	1
Chad	853	3	74	1	Community transmission	0
Uganda	823	0	0	0	Sporadic cases	3
Cabo Verde	781	21	7	0	Clusters of cases	0
Mozambique	638	29	4	1	Clusters of cases	0
Rwanda	636	24	2	0	Sporadic cases	0
Malawi	564	8	6	0	Clusters of cases	0
Togo	537	6	13	0	Community transmission	0
Benin	532	49	9	0	Community transmission	0
Eswatini	520	14	4	0	Clusters of cases	0
Liberia	509	11	33	0	Community transmission	0
United Republic of Tanzania	509	0	21	0	Community transmission	40
Sao Tome and Principe	398	10	10	0	Clusters of cases	0
Zimbabwe	391	4	4	0	Sporadic cases	0
Mauritius	337	0	10	0	Clusters of cases	11
Comoros	197	21	3	1	Community transmission	0
Angola	142	0	6	0	Clusters of cases	1
Eritrea	121	12	0	0	Sporadic cases	0
Burundi	104	0	1	0	Clusters of cases	1
Botswana	60	0	1	0	Clusters of cases	4
Gambia	34	6	1	0	Sporadic cases	0

Reporting Country/ Territory/Area	Total confirmed cases	Total confirmed new cases	Total deaths	Total new deaths	Transmission classification ⁱ	Days since last reported case
Namibia	34	2	0	0	Sporadic cases	0
Seychelles	11	0	0	0	Clusters of cases	71
Lesotho	4	0	0	0	Sporadic cases	13
Territoriesⁱⁱ						
Mayotte	2 333	23	29	1	Clusters of cases	0
Réunion	495	- 1	1	0	Clusters of cases	0
Americas						
United States of America	2 098 106	18 514	115 980	496	Community transmission	0
Brazil	888 271	20 647	43 959	627	Community transmission	0
Peru	232 992	3 256	6 860	172	Community transmission	0
Chile	184 449	5 013	3 383	21	Community transmission	0
Mexico	150 264	3 427	17 580	439	Community transmission	0
Canada	99 147	360	8 175	29	Community transmission	0
Colombia	53 063	2 124	1 726	59	Community transmission	0
Ecuador	47 943	621	3 970	41	Community transmission	0
Argentina	32 785	1 208	862	20	Community transmission	0
Dominican Republic	23 686	415	615	10	Community transmission	0
Panama	21 422	736	448	11	Community transmission	0
Bolivia (Plurinational State of)	19 073	614	632	21	Community transmission	0
Guatemala	10 272	427	399	15	Community transmission	0
Honduras	9 178	320	322	10	Community transmission	0
Haiti	4 441	132	76	3	Community transmission	0
El Salvador	3 941	115	76	2	Community transmission	0
Venezuela (Bolivarian Republic of)	3 062	84	26	1	Community transmission	0

Reporting Country/ Territory/Area	Total confirmed cases	Total confirmed new cases	Total deaths	Total new deaths	Transmission classification ⁱ	Days since last reported case
Cuba	2 273	11	84	0	Clusters of cases	0
Costa Rica	1 744	29	12	0	Clusters of cases	0
Nicaragua	1 655	0	55	0	Community transmission	6
Paraguay	1 303	7	12	0	Community transmission	0
Uruguay	848	0	23	0	Clusters of cases	1
Jamaica	621	4	10	0	Clusters of cases	0
Suriname	236	28	6	2	Clusters of cases	0
Guyana	159	0	12	0	Clusters of cases	3
Trinidad and Tobago	123	0	8	0	Sporadic cases	1
Bahamas	104	0	11	0	Clusters of cases	1
Barbados	97	0	7	0	Clusters of cases	1
Saint Vincent and the Grenadines	27	0	0	0	Sporadic cases	8
Antigua and Barbuda	26	0	3	0	Clusters of cases	3
Grenada	23	0	0	0	Clusters of cases	21
Belize	21	0	2	0	Sporadic cases	2
Saint Lucia	19	0	0	0	Sporadic cases	11
Dominica	18	0	0	0	Clusters of cases	4
Saint Kitts and Nevis	15	0	0	0	Sporadic cases	57
Territoriesⁱⁱ						
Puerto Rico	5 951	61	147	0	Community transmission	0
French Guiana	1 421	95	5	2	Community transmission	0
Martinique	202	0	14	0	Clusters of cases	10
Cayman Islands	187	0	1	0	Clusters of cases	3
Guadeloupe	171	0	14	0	Clusters of cases	4

Reporting Country/ Territory/Area	Total confirmed cases	Total confirmed new cases	Total deaths	Total new deaths	Transmission classification ¹	Days since last reported case
Bermuda	144	0	9	0	Clusters of cases	2
Aruba	101	0	3	0	No cases	42
Sint Maarten	77	0	15	0	Sporadic cases	11
United States Virgin Islands	73	1	6	0	Clusters of cases	0
Saint Martin	42	1	3	0	Sporadic cases	0
Curaçao	22	0	1	0	Sporadic cases	6
Falkland Islands (Malvinas)	13	0	0	0	Clusters of cases	52
Turks and Caicos Islands	12	0	1	0	Sporadic cases	50
Montserrat	11	0	1	0	Sporadic cases	64
British Virgin Islands	8	0	1	0	Sporadic cases	32
Bonaire, Sint Eustatius and Saba	7	0	0	0	No cases	22
Saint Barthélemy	6	0	0	0	No cases	78
Anguilla	3	0	0	0	Sporadic cases	74
Saint Pierre and Miquelon	1	0	0	0	No cases	70
Eastern Mediterranean						
Iran (Islamic Republic of)	192 439	2 563	9 065	115	Community transmission	0
Pakistan	154 760	5 839	2 975	136	Clusters of cases	0
Saudi Arabia	136 315	4 267	1 052	41	Clusters of cases	0
Qatar	82 077	1 201	80	4	Community transmission	0
Egypt	47 856	1 567	1 766	94	Clusters of cases	0
United Arab Emirates	42 982	346	293	2	Pending	0
Kuwait	36 958	527	303	5	Clusters of cases	0
Afghanistan	26 874	1 241	504	20	Clusters of cases	0
Oman	25 269	745	114	6	Clusters of cases	0

Reporting Country/ Territory/Area	Total confirmed cases	Total confirmed new cases	Total deaths	Total new deaths	Transmission classification ⁱ	Days since last reported case
Iraq	22 700	1 385	712	60	Clusters of cases	0
Bahrain	19 553	540	47	1	Clusters of cases	0
Morocco	8 931	46	212	0	Clusters of cases	0
Sudan	7 740	305	477	9	Community transmission	0
Djibouti	4 539	38	43	0	Clusters of cases	0
Somalia	2 658	16	88	0	Sporadic cases	0
Lebanon	1 473	9	32	0	Clusters of cases	0
Tunisia	1 125	15	49	0	Community transmission	0
Jordan	981	2	9	0	Clusters of cases	0
Yemen	889	41	215	6	Pending	0
Libya	467	0	10	0	Clusters of cases	1
Syrian Arab Republic	177	0	6	0	Community transmission	2
Territoriesⁱⁱ						
occupied Palestinian territory	695	6	5	0	Clusters of cases	0
Europe						
Russian Federation	553 301	7 843	7 478	194	Clusters of cases	0
The United Kingdom	298 140	1 279	41 969	233	Community transmission	0
Spain	244 328	219	27 136	0	Community transmission	0
Italy	237 500	210	34 405	34	Community transmission	0
Germany	187 184	345	8 830	30	Community transmission	0
Turkey	181 298	1 467	4 842	17	Community transmission	0
France	153 045	226	29 481	108	Community transmission	0
Belgium	60 155	55	9 663	2	Community transmission	0
Belarus	55 369	689	318	6	Community transmission	0

Reporting Country/ Territory/Area	Total confirmed cases	Total confirmed new cases	Total deaths	Total new deaths	Transmission classification ¹	Days since last reported case
Sweden	53 323	940	4 939	48	Community transmission	0
Netherlands	49 087	304	6 070	11	Community transmission	0
Portugal	37 336	300	1 522	2	Community transmission	0
Ukraine	33 234	758	943	30	Community transmission	0
Switzerland	31 063	15	1 677	1	Community transmission	0
Poland	30 195	407	1 272	16	Community transmission	0
Ireland	25 334	13	1 709	3	Community transmission	0
Romania	22 415	250	1 437	10	Community transmission	0
Israel	19 121	0	302	0	Pending	1
Armenia	18 033	544	302	9	Community transmission	0
Austria	17 098	33	681	3	Community transmission	0
Kazakhstan	15 542	350	88	7	Clusters of cases	0
Serbia	12 426	59	256	1	Pending	0
Republic of Moldova	12 254	375	427	10	Community transmission	0
Denmark	12 250	33	598	0	Community transmission	0
Azerbaijan	10 662	338	126	4	Clusters of cases	0
Czechia	10 111	47	331	1	Clusters of cases	0
Norway	8 631	0	242	0	Clusters of cases	1
Finland	7 112	4	326	0	Pending	0
Uzbekistan	5 561	268	19	0	Clusters of cases	0
Tajikistan	5 160	63	50	0	Pending	0
North Macedonia	4 289	132	201	8	Clusters of cases	0
Hungary	4 078	1	567	2	Community transmission	0
Luxembourg	4 075	3	110	0	Clusters of cases	0

Reporting Country/ Territory/Area	Total confirmed cases	Total confirmed new cases	Total deaths	Total new deaths	Transmission classification ⁱ	Days since last reported case
Bulgaria	3 453	112	181	5	Clusters of cases	0
Greece	3 148	14	185	1	Clusters of cases	0
Bosnia and Herzegovina	3 084	45	167	3	Community transmission	0
Kyrgyzstan	2 562	90	30	1	Clusters of cases	0
Croatia	2 255	1	107	0	Sporadic cases	0
Estonia	1 975	1	69	0	Clusters of cases	0
Iceland	1 812	2	10	0	Community transmission	0
Lithuania	1 776	3	76	0	Community transmission	0
Albania	1 722	50	38	1	Clusters of cases	0
Slovakia	1 552	0	28	0	Clusters of cases	1
Slovenia	1 509	13	109	0	Clusters of cases	0
Latvia	1 098	1	28	0	Clusters of cases	0
Cyprus	985	0	18	0	Clusters of cases	1
Georgia	888	9	14	0	Community transmission	0
Andorra	854	1	52	1	Community transmission	0
San Marino	695	0	42	0	Community transmission	12
Malta	656	7	9	0	Sporadic cases	0
Montenegro	326	0	9	0	Clusters of cases	1
Monaco	99	0	1	0	Sporadic cases	10
Liechtenstein	83	0	1	0	Pending	52
Holy See	12	0	0	0	Sporadic cases	41
Territoriesⁱⁱ						
Kosovo ^[1]	1 713	141	24	1	Community transmission	0
Isle of Man	336	0	24	0	Pending	26

Reporting Country/ Territory/Area	Total confirmed cases	Total confirmed new cases	Total deaths	Total new deaths	Transmission classification ¹	Days since last reported case
Jersey	316	3	30	0	Community transmission	0
Guernsey	252	0	13	0	Community transmission	45
Faroe Islands	187	0	0	0	Pending	54
Gibraltar	176	0	0	0	Clusters of cases	8
Greenland	13	0	0	0	Pending	19
South-East Asia						
India	354 065	10 974	11 903	2 003	Clusters of cases	0
Bangladesh	94 481	3 862	1 262	53	Community transmission	0
Indonesia	40 400	1 106	2 231	33	Community transmission	0
Nepal	6 591	380	19	0	Sporadic cases	0
Thailand	3 135	0	58	0	Clusters of cases	3
Maldives	2 094	29	8	0	Clusters of cases	0
Sri Lanka	1 915	10	11	0	Clusters of cases	0
Myanmar	262	0	6	0	Clusters of cases	2
Bhutan	67	0	0	0	Sporadic cases	1
Timor-Leste	24	0	0	0	Clusters of cases	54
Western Pacific						
China	84 867	44	4 645	0	Clusters of cases	0
Singapore	40 969	151	26	0	Clusters of cases	0
Philippines	26 781	361	1 103	5	Community transmission	0
Japan	17 628	41	931	4	Clusters of cases	0
Republic of Korea	12 198	43	279	1	Clusters of cases	0
Malaysia	8 505	11	121	0	Clusters of cases	0

Reporting Country/ Territory/Area	Total confirmed cases	Total confirmed new cases	Total deaths	Total new deaths	Transmission classification ⁱ	Days since last reported case
Australia	7 347	12	102	0	Clusters of cases	0
New Zealand	1 156	0	22	0	Clusters of cases	1
Viet Nam	335	1	0	0	Clusters of cases	0
Mongolia	197	0	0	0	Sporadic cases	4
Brunei Darussalam	141	0	3	1	Clusters of cases	40
Cambodia	128	0	0	0	Sporadic cases	2
Lao People's Democratic Republic	19	0	0	0	Sporadic cases	65
Fiji	18	0	0	0	Sporadic cases	57
Papua New Guinea	8	0	0	0	Sporadic cases	55
Territoriesⁱⁱ						
Guam	178	0	5	0	Clusters of cases	1
French Polynesia	60	0	0	0	Sporadic cases	42
Northern Mariana Islands (Commonwealth of the)	30	0	2	0	Pending	7
New Caledonia	21	0	0	0	Sporadic cases	7
Subtotal for all regions	8 060 809	119 759	440 277	5 494		
Other*	741	0	13	0	Not applicable	-
Grand total	8 061 550	119 759	440 290	5 494		

**See [Annex 1](#) for data, table and figure notes.

Technical guidance and other resources

- To view all technical guidance documents regarding COVID-19, please go to [this webpage](#).
- Updates from WHO regional offices
 - [WHO AFRO](#)
 - [WHO EMRO](#)
 - [WHO EURO](#)
 - [WHO PAHO](#)
 - [WHO SEARO](#)
 - [WHO WPRO](#)
- [Research and Development](#)
- [Online courses on COVID-19](#) and in [additional national languages](#)
- [The Strategic Preparedness and Response Plan](#) (SPRP) outlining the support the international community can provide to all countries to prepare and respond to the virus
- [WHO Coronavirus Disease \(COVID-19\) Dashboard](#)
- [Weekly COVID-19 Operations Updates](#)

Recommendations and advice for the public

- [Protect yourself](#)
- [Questions and answers](#)
- [Travel advice](#)
- [EPI-WIN](#): tailored information for individuals, organizations and communities

Case definitions

WHO periodically updates the [Global Surveillance for human infection with coronavirus disease \(COVID-19\)](#) document which includes surveillance definitions.

Definition of COVID-19 death

A COVID-19 death is defined for surveillance purposes as a death resulting from a clinically compatible illness in a probable or confirmed COVID-19 case, unless there is a clear alternative cause of death that cannot be related to COVID-19 disease (e.g. trauma). There should be no period of complete recovery between the illness and death.

Further guidance for certification and classification (coding) of COVID-19 as cause of death is available [here](#) and [here](#).

Annex 1: Data, table and figure notes

Caution must be taken when interpreting all data presented. Differences are to be expected between information products published by WHO, national public health authorities, and other sources using different inclusion criteria and different data cut-off times. While steps are taken to ensure accuracy and reliability, all data are subject to continuous verification and change. Case detection, definitions, testing strategies, reporting practice, and lag times differ between countries/territories/areas. These factors, amongst others, influence the counts presented, with variable underestimation of true case and death counts, and variable delays to reflecting these data at global level.

The designations employed, and the presentation of these materials do not imply the expression of any opinion whatsoever on the part of WHO concerning the legal status of any country, territory or area or of its authorities, or concerning the delimitation of its frontiers or boundaries. Dotted and dashed lines on maps represent approximate border lines for which there may not yet be full agreement. Countries, territories and areas are arranged under the administering WHO region.

The mention of specific companies or of certain manufacturers' products does not imply that they are endorsed or recommended by WHO in preference to others of a similar nature that are not mentioned. Errors and omissions excepted, the names of proprietary products are distinguished by initial capital letters.

[1] All references to Kosovo should be understood to be in the context of the United Nations Security Council resolution 1244 (1999). In the map, number of cases of Serbia and Kosovo (UNSCR 1244, 1999) have been aggregated for visualization purposes.

Counts reflect laboratory-confirmed cases and deaths, based on [WHO case definitions](#), unless stated otherwise (see Country, territory, or area-specific updates and errata), and include both domestic and repatriated cases.

Other*: includes cases reported from international conveyances.

Due to the recent trend of countries conducting data reconciliation exercises which remove large numbers of cases or deaths from their total counts, WHO will now display such data as negative numbers in the “new cases” / “new deaths” columns as appropriate. This will aid readers in identifying when such adjustments occur. When additional details become available that allow the subtractions to be suitably apportioned to previous days, graphics will be updated accordingly. Prior situation reports will not be edited; see covid19.who.int for the most up-to-date data.

Additional table notes

ⁱ Transmission classification is based on a process of country/territory/area self-reporting. Classifications are reviewed on a weekly basis and may be revised as new information becomes available. and. Differing degrees of transmission may be present within countries/territories/areas; classification is based on the highest category reported within a country/territory/area. Categories:

- No cases: with no confirmed cases
- Sporadic cases: with one or more cases, imported or locally detected
- Clusters of cases: experiencing cases, clustered in time, geographic location and/or by common exposures

- Community transmission: experiencing larger outbreaks of local transmission defined through an assessment of factors including, but not limited to: large numbers of cases not linkable to transmission chains; large numbers of cases from sentinel lab surveillance; and/or multiple unrelated clusters in several areas of the country/territory/area
- Pending: transmission classification has not been reported to WHO

ii “Territories” include territories, areas, overseas dependencies and other jurisdictions of similar status.

Country, territory, or area-specific updates and errata

- **Update 17 June 2020, Réunion:** Counts adjusted retrospectively by national authorities: 1 case has been excluded.
- Note: India has reported a large increase in deaths in the last 24 hours, possibly due to a data reconciliation process. WHO is monitoring the situation and is in close contact with the national authorities.