

Coronavirus disease (COVID-19)

Situation Report – 167

Data as received by WHO from national authorities by 10:00 CEST, 5 July 2020

Highlights

WHO has accepted the recommendation from the Solidarity Trial's International Steering Committee to [discontinue the trial's hydroxychloroquine and lopinavir/ritonavir treatment arms for COVID-19](#).

WHO Regional Director for the Western Pacific, Dr Takeshi Kasai spoke of a ['new normal', one that improves both health and livelihoods](#) during a virtual press conference with the World Economic Forum on COVID-19. He added "This 'new future' is the dividend of COVID-19 which WHO hopes for."

[The Regional Office for the Americas/PAHO has launched a new site for donations to its COVID-19 Response Fund](#). The resources will help PAHO support countries and territories throughout the Americas. More details available [here](#).

The Regional Office for Europe is launching a new podcast service entitled: [Health in Europe](#). WHO works with thousands of inspiring individuals and groups, and this podcast series highlights their stories and how they might impact your day-to-day life.

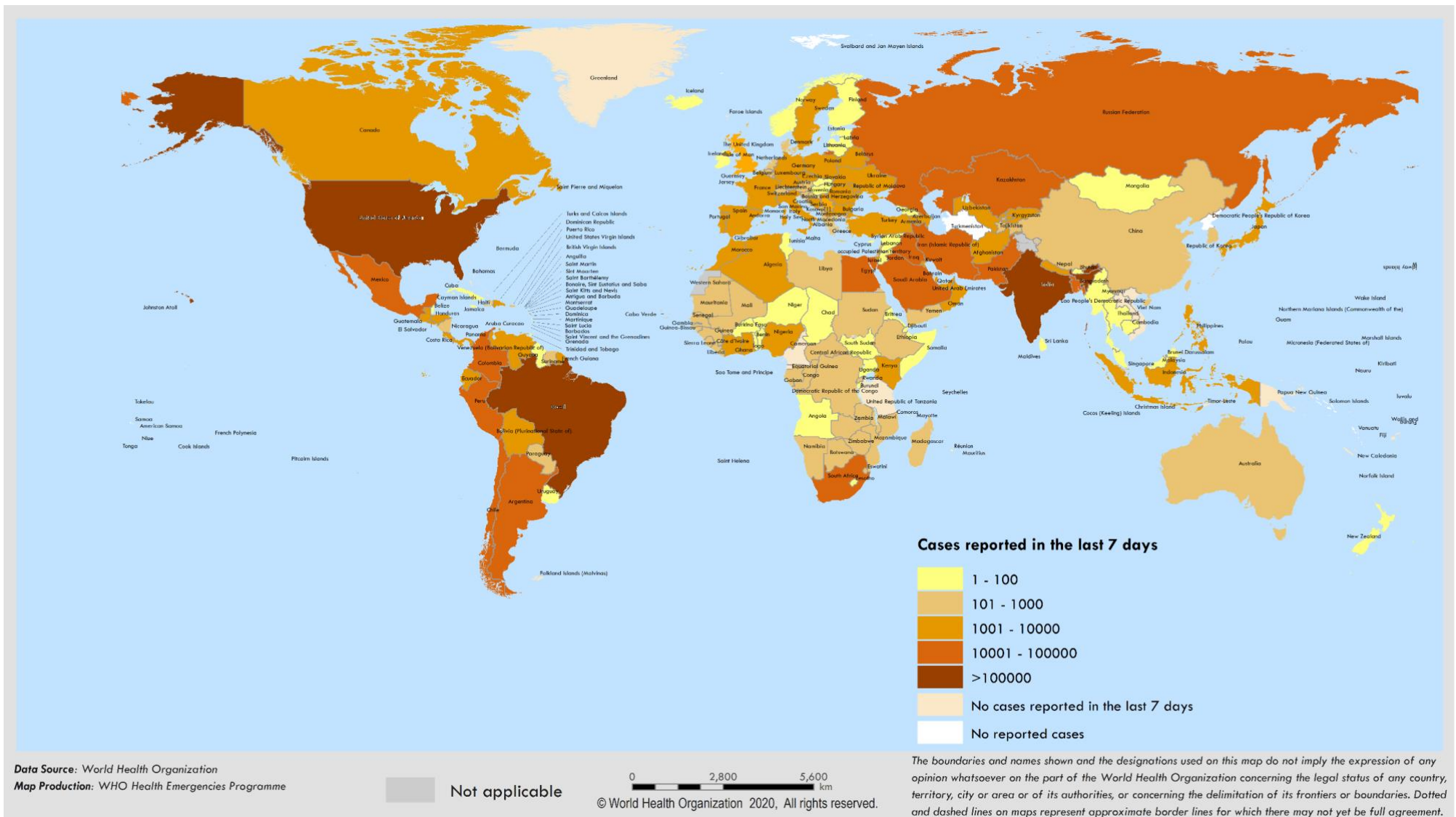
Situation in numbers (by WHO Region)

Total (new cases in last 24 hours)

Globally	11 125 245 cases (203 836)	528 204 deaths (5 195)
Africa	356 666 cases (14 251)	6 746 deaths (118)
Americas	5 697 954 cases (122 472)	262 538 deaths (3 444)
Eastern Mediterranean	1 153 157 cases (18 468)	27 074 deaths (555)
Europe	2 774 221 cases (16 665)	199 879 deaths (369)
South-East Asia	918 591 cases (29 859)	24 473 deaths (699)
Western Pacific	223 915 cases (2 121)	7 481 deaths (10)

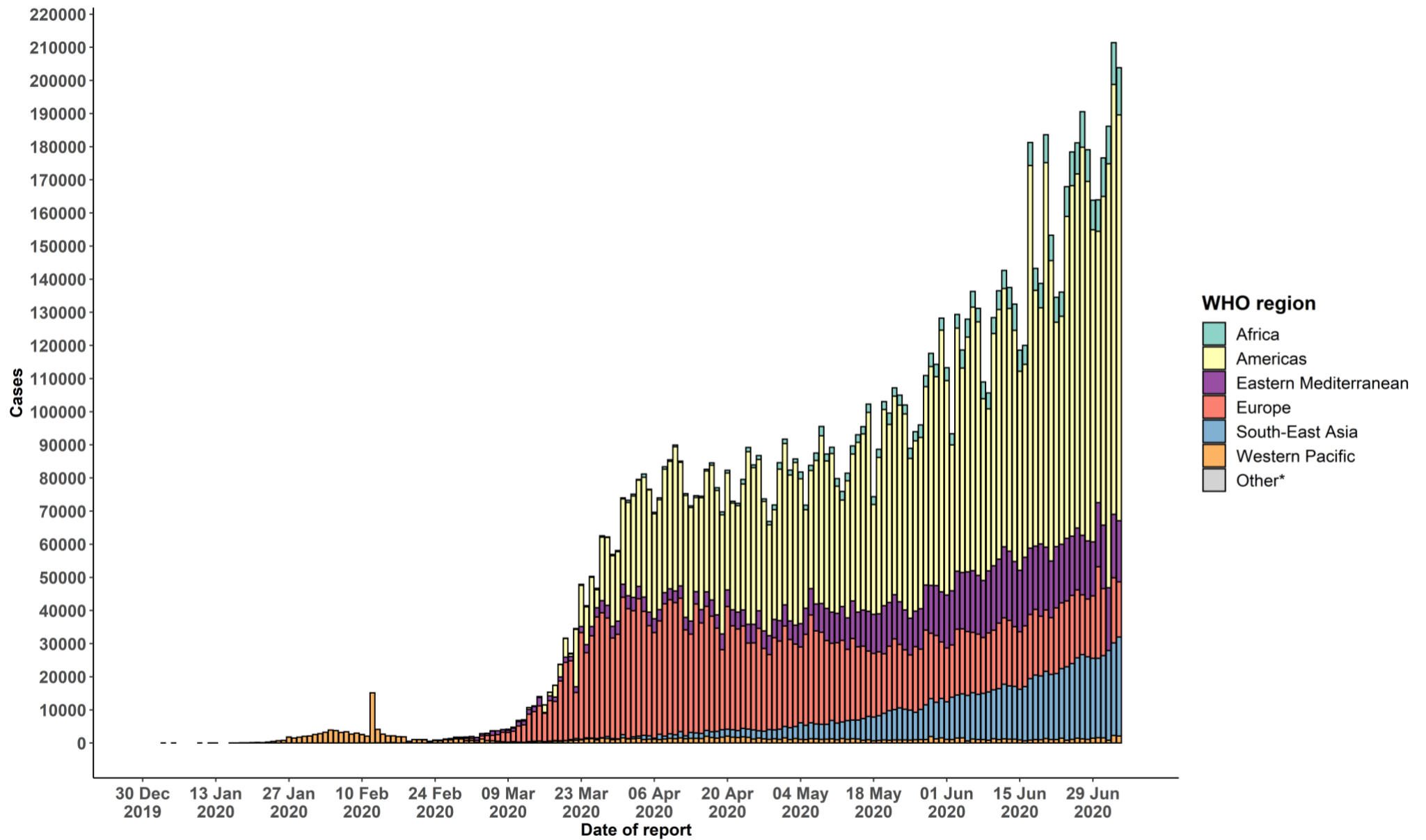
Surveillance

Figure 1. Number of confirmed COVID-19 cases reported in the last seven days by country, territory or area, 29 June to 5 July **



**See [Annex 1](#) for data, table and figure notes.

Figure 2. Number of confirmed COVID-19 cases, by date of report and WHO region, 30 December through 5 July**



**See [Annex 1](#) for data, table and figure notes.

Table 1. Countries, territories or areas with reported laboratory-confirmed COVID-19 cases and deaths, by WHO region. Data as of 10 AM CEST, 5 July 2020**

Reporting Country/ Territory/Area	Total confirmed cases	Total confirmed new cases	Total deaths	Total new deaths	Transmission classification ⁱ	Days since last reported case
Africa						
South Africa	187 977	10 853	3 026	74	Community transmission	0
Nigeria	28 167	603	634	6	Community transmission	0
Ghana	19 388	496	117	0	Community transmission	0
Algeria	15 500	430	946	9	Community transmission	0
Cameroon	12 592	0	313	0	Community transmission	9
Côte d'Ivoire	10 244	252	70	2	Community transmission	0
Kenya	7 577	389	159	5	Community transmission	0
Democratic Republic of the Congo	7 378	68	181	3	Community transmission	0
Senegal	7 272	108	129	4	Community transmission	0
Ethiopia	6 386	169	116	2	Community transmission	0
Gabon	5 620	107	44	2	Community transmission	0
Guinea	5 570	49	34	1	Community transmission	0
Mauritania	4 705	0	129	0	Clusters of cases	1
Central African Republic	3 969	51	48	0	Community transmission	0
Madagascar	2 728	216	29	3	Clusters of cases	0
Mali	2 303	18	118	1	Community transmission	0
South Sudan	2 058	22	38	0	Clusters of cases	0
Guinea-Bissau	1 765	0	25	0	Community transmission	1
Zambia	1 632	0	30	0	Community transmission	3
Malawi	1 613	115	17	1	Clusters of cases	0
Congo	1 557	0	44	0	Community transmission	1

Reporting Country/ Territory/Area	Total confirmed cases	Total confirmed new cases	Total deaths	Total new deaths	Transmission classification ¹	Days since last reported case
Sierra Leone	1 533	9	62	0	Community transmission	0
Cabo Verde	1 420	38	16	1	Clusters of cases	0
Benin	1 199	0	21	0	Community transmission	4
Rwanda	1 092	11	3	0	Sporadic cases	0
Niger	1 082	0	68	0	Community transmission	1
Equatorial Guinea	1 043	0	12	0	Community transmission	42
Burkina Faso	987	7	53	0	Community transmission	0
Mozambique	969	30	7	1	Clusters of cases	0
Eswatini	954	45	13	0	Clusters of cases	0
Uganda	927	16	0	0	Sporadic cases	0
Chad	871	0	74	0	Community transmission	1
Liberia	833	0	37	0	Community transmission	1
Zimbabwe	698	73	8	1	Sporadic cases	0
Togo	676	5	15	1	Community transmission	0
United Republic of Tanzania	509	0	21	0	Community transmission	58
Sao Tome and Principe	399	0	11	0	Clusters of cases	1
Namibia	375	25	0	0	Sporadic cases	0
Angola	346	18	19	1	Clusters of cases	0
Mauritius	341	0	10	0	Clusters of cases	10
Comoros	309	0	7	0	Community transmission	1
Botswana	275	0	1	0	Clusters of cases	1
Eritrea	215	0	0	0	Sporadic cases	2
Burundi	191	0	1	0	Clusters of cases	1

Reporting Country/ Territory/Area	Total confirmed cases	Total confirmed new cases	Total deaths	Total new deaths	Transmission classification ¹	Days since last reported case
Seychelles	81	0	0	0	Clusters of cases	5
Lesotho	79	16	0	0	Sporadic cases	0
Gambia	57	2	2	0	Sporadic cases	0
Territories ⁱⁱ						
Mayotte	2 668	7	36	0	Clusters of cases	0
Réunion	536	3	2	0	Clusters of cases	0
Americas						
United States of America	2 776 366	51 933	129 226	745	Community transmission	0
Brazil	1 539 081	42 223	63 174	1 290	Community transmission	0
Peru	295 599	3 595	10 226	181	Community transmission	0
Chile	291 847	3 758	6 192	141	Community transmission	0
Mexico	245 251	6 740	29 843	654	Community transmission	0
Colombia	109 505	3 395	3 777	136	Community transmission	0
Canada	10 5091	319	8 663	21	Community transmission	0
Argentina	72 786	2 845	1 453	50	Community transmission	0
Ecuador	61 535	878	4 769	69	Community transmission	0
Bolivia (Plurinational State of)	36 818	1 290	1 320	49	Community transmission	0
Dominican Republic	36 184	1 036	786	11	Community transmission	0
Panama	35 995	758	698	31	Community transmission	0
Honduras	22 116	996	605	14	Community transmission	0
Guatemala	21 293	1 221	880	37	Community transmission	0
El Salvador	7 507	240	210	8	Community transmission	0
Venezuela (Bolivarian Republic of)	6 537	264	59	2	Community transmission	0
Haiti	6 230	129	110	0	Community transmission	0

Reporting Country/ Territory/Area	Total confirmed cases	Total confirmed new cases	Total deaths	Total new deaths	Transmission classification ⁱ	Days since last reported case
Costa Rica	4 311	288	18	0	Clusters of cases	0
Paraguay	2 385	36	20	1	Community transmission	0
Cuba	2 369	8	86	0	Clusters of cases	0
Nicaragua	2 182	0	83	0	Community transmission	3
Uruguay	952	5	28	0	Clusters of cases	0
Jamaica	721	6	10	0	Clusters of cases	0
Suriname	565	18	14	1	Clusters of cases	0
Guyana	256	6	14	0	Clusters of cases	0
Trinidad and Tobago	130	0	8	0	Sporadic cases	4
Bahamas	104	0	11	0	Clusters of cases	19
Barbados	97	0	7	0	Clusters of cases	19
Antigua and Barbuda	68	0	3	0	Clusters of cases	2
Belize	30	2	2	0	Sporadic cases	0
Saint Vincent and the Grenadines	29	0	0	0	Sporadic cases	17
Grenada	23	0	0	0	Clusters of cases	39
Saint Lucia	22	0	0	0	Sporadic cases	1
Dominica	18	0	0	0	Clusters of cases	22
Saint Kitts and Nevis	15	0	0	0	No cases	75
Territoriesⁱⁱ						
Puerto Rico	7 787	104	155	1	Community transmission	0
French Guiana	4 913	355	16	0	Community transmission	0
Martinique	249	7	14	0	Clusters of cases	0
Cayman Islands	201	0	1	0	Clusters of cases	2
Guadeloupe	184	2	16	2	Clusters of cases	0

Reporting Country/ Territory/Area	Total confirmed cases	Total confirmed new cases	Total deaths	Total new deaths	Transmission classification ¹	Days since last reported case
Bermuda	146	0	9	0	Sporadic cases	14
United States Virgin Islands	111	13	6	0	Clusters of cases	0
Aruba	104	0	3	0	No cases	1
Sint Maarten	78	0	15	0	No cases	1
Turks and Caicos Islands	45	1	2	0	Clusters of cases	0
Saint Martin	44	1	3	0	Sporadic cases	0
Curaçao	25	0	1	0	No cases	4
Falkland Islands (Malvinas)	13	0	0	0	No cases	70
Montserrat	11	0	1	0	No cases	82
British Virgin Islands	8	0	1	0	No cases	50
Bonaire, Sint Eustatius and Saba	7	0	0	0	No cases	40
Saint Barthélemy	6	0	0	0	No cases	96
Anguilla	3	0	0	0	No cases	92
Saint Pierre and Miquelon	1	0	0	0	No cases	88
Eastern Mediterranean						
Iran (Islamic Republic of)	237 878	2 449	11 408	148	Community transmission	0
Pakistan	228 474	3 191	4 712	93	Clusters of cases	0
Saudi Arabia	205 929	4 128	1 858	56	Clusters of cases	0
Qatar	99 183	530	123	2	Community transmission	0
Egypt	74 035	1 324	3 280	79	Clusters of cases	0
Iraq	58 354	2 334	2 368	106	Community transmission	0
United Arab Emirates	50 857	716	321	3	Community transmission	0
Kuwait	49 303	631	365	5	Clusters of cases	0
Oman	45 106	1177	203	10	Community transmission	0

Reporting Country/ Territory/Area	Total confirmed cases	Total confirmed new cases	Total deaths	Total new deaths	Transmission classification ¹	Days since last reported case
Afghanistan	32 951	279	864	38	Clusters of cases	0
Bahrain	28 857	447	96	1	Clusters of cases	0
Morocco	13 822	534	232	2	Clusters of cases	0
Sudan	9 767	104	608	4	Community transmission	0
Djibouti	4 736	0	55	0	Clusters of cases	1
Somalia	2 961	17	92	2	Sporadic cases	0
Lebanon	1 855	25	35	0	Clusters of cases	0
Yemen	1 252	8	338	2	Community transmission	0
Tunisia	1 181	0	50	0	Sporadic cases	1
Jordan	1 150	3	10	0	Clusters of cases	0
Libya	918	0	27	0	Clusters of cases	1
Syrian Arab Republic	338	10	10	0	Community transmission	0
Territoriesⁱⁱ						
occupied Palestinian territory	4 250	561	19	4	Clusters of cases	0
Europe						
Russian Federation	681 251	6 736	10 161	134	Clusters of cases	0
The United Kingdom	284 904	624	44 198	67	Community transmission	0
Spain	250 545	0	28 385	0	Clusters of cases	1
Italy	241 419	235	34 854	21	Community transmission	0
Turkey	204 610	1 154	5 206	20	Community transmission	0
Germany	196 335	239	9 012	2	Clusters of cases	0
France	158 734	0	29 808	0	Community transmission	1
Sweden	71 419	0	5 420	0	Community transmission	1
Belarus	63 270	273	418	6	Community transmission	0

Reporting Country/ Territory/Area	Total confirmed cases	Total confirmed new cases	Total deaths	Total new deaths	Transmission classification ¹	Days since last reported case
Belgium	61 909	71	9 771	0	Community transmission	0
Netherlands	50 493	61	6 117	6	Community transmission	0
Ukraine	47 677	0	1 227	0	Community transmission	1
Kazakhstan	47 171	1 452	240	26	Clusters of cases	0
Portugal	43 569	413	1 605	7	Community transmission	0
Poland	35 719	314	1 512	5	Community transmission	0
Switzerland	32 114	97	1 685	0	Community transmission	0
Armenia	28 606	706	484	7	Community transmission	0
Romania	28 582	416	1 731	23	Community transmission	0
Israel	28 433	944	326	2	Pending	0
Ireland	25 509	11	1 741	1	Clusters of cases	0
Azerbaijan	19 801	534	241	6	Clusters of cases	0
Austria	18 196	123	705	0	Community transmission	0
Republic of Moldova	17 672	227	582	6	Community transmission	0
Serbia	15 829	325	306	8	Pending	0
Denmark	12 832	0	606	0	Community transmission	1
Czechia	12 440	121	351	-1	Clusters of cases	0
Uzbekistan	9 829	329	31	2	Clusters of cases	0
Norway	8 895	0	251	0	Clusters of cases	2
Finland	7 248	6	329	0	Pending	0
Kyrgyzstan	7 094	0	78	0	Clusters of cases	1
North Macedonia	6 932	145	334	6	Clusters of cases	0
Tajikistan	6 159	101	52	0	Pending	0
Bulgaria	5 677	180	241	2	Clusters of cases	0

Reporting Country/ Territory/Area	Total confirmed cases	Total confirmed new cases	Total deaths	Total new deaths	Transmission classification ⁱ	Days since last reported case
Bosnia and Herzegovina	5 249	289	190	0	Community transmission	0
Luxembourg	4 476	29	110	0	Clusters of cases	0
Hungary	4 183	11	589	1	Community transmission	0
Greece	3 511	25	192	0	Clusters of cases	0
Croatia	3 094	86	113	1	Sporadic cases	0
Albania	2 893	74	76	2	Clusters of cases	0
Estonia	1 993	2	69	0	Clusters of cases	0
Iceland	1 860	5	10	0	Community transmission	0
Lithuania	1 831	3	79	0	Community transmission	0
Slovakia	1 749	29	28	0	Clusters of cases	0
Slovenia	1 679	30	111	0	Clusters of cases	0
Latvia	1 123	1	30	0	Sporadic cases	0
Cyprus	1 002	3	19	0	Clusters of cases	0
Georgia	951	5	15	0	Sporadic cases	0
Andorra	855	0	52	0	Community transmission	16
Montenegro	720	57	13	0	Clusters of cases	0
San Marino	713	0	42	0	Community transmission	15
Malta	672	0	9	0	Sporadic cases	1
Monaco	99	0	1	0	Sporadic cases	28
Liechtenstein	84	0	1	0	Pending	1
Holy See	12	0	0	0	Sporadic cases	59
Territoriesⁱⁱ						
Kosovo ^[1]	3 313	178	54	9	Community transmission	0

Reporting Country/ Territory/Area	Total confirmed cases	Total confirmed new cases	Total deaths	Total new deaths	Transmission classification ¹	Days since last reported case
Isle of Man	336	0	24	0	Pending	44
Jersey	320	1	31	0	Community transmission	0
Guernsey	252	0	13	0	Community transmission	63
Faroe Islands	187	0	0	0	Pending	72
Gibraltar	178	0	0	0	Clusters of cases	2
Greenland	13	0	0	0	Pending	37
South-East Asia						
India	673 165	24 850	19 268	613	Clusters of cases	0
Bangladesh	159 679	3 288	1 997	29	Community transmission	0
Indonesia	62 142	1 447	3 089	53	Community transmission	0
Nepal	15 491	232	34	2	Sporadic cases	0
Thailand	3 190	5	58	0	Clusters of cases	0
Maldives	2 435	25	10	2	Clusters of cases	0
Sri Lanka	2 074	5	11	0	Clusters of cases	0
Myanmar	313	7	6	0	Clusters of cases	0
Bhutan	78	0	0	0	Sporadic cases	1
Timor-Leste	24	0	0	0	No cases	72
Western Pacific						
China	85 306	19	4 648	0	Clusters of cases	0
Singapore	44 664	185	26	0	Clusters of cases	0
Philippines	41 830	1 494	1 290	10	Community transmission	0
Japan	19 522	240	977	0	Clusters of cases	0
Republic of Korea	13 091	61	283	0	Clusters of cases	0

Reporting Country/ Territory/Area	Total confirmed cases	Total confirmed new cases	Total deaths	Total new deaths	Transmission classification ⁱ	Days since last reported case
Malaysia	8 658	10	121	0	Clusters of cases	0
Australia	8 362	107	104	0	Clusters of cases	0
New Zealand	1 183	3	22	0	Clusters of cases	0
Viet Nam	355	0	0	0	Clusters of cases	7
Mongolia	220	0	0	0	Sporadic cases	5
Brunei Darussalam	141	0	3	0	No cases	58
Cambodia	141	0	0	0	Sporadic cases	6
Lao People's Democratic Republic	19	0	0	0	Sporadic cases	83
Fiji	18	0	0	0	Sporadic cases	75
Papua New Guinea	11	0	0	0	Sporadic cases	9
Territoriesⁱⁱ						
Guam	280	2	5	0	Clusters of cases	0
French Polynesia	62	0	0	0	Sporadic cases	7
Northern Mariana Islands (Commonwealth of the)	31	0	2	0	Pending	2
New Caledonia	21	0	0	0	Sporadic cases	25
Subtotal for all regions	11 124 504	203 836	528 191	5 195		
Other*	741	0	13	0	Not applicable	-
Grand total	11 125 245	203 836	528 204	5 195		

**See [Annex 1](#) for data, table and figure notes.

Technical guidance and other resources

- To view all technical guidance documents regarding COVID-19, please go to [this webpage](#).
- Updates from WHO regional offices
 - [WHO AFRO](#)
 - [WHO EMRO](#)
 - [WHO EURO](#)
 - [WHO PAHO](#)
 - [WHO SEARO](#)
 - [WHO WPRO](#)
- [Research and Development](#)
- [Online courses on COVID-19](#) and in [additional national languages](#)
- [The Strategic Preparedness and Response Plan \(SPRP\)](#) outlining the support the international community can provide to all countries to prepare and respond to the virus
- [WHO Coronavirus Disease \(COVID-19\) Dashboard](#)
- [Weekly COVID-19 Operations Updates](#)

Recommendations and advice for the public

- [Protect yourself](#)
- [Questions and answers](#)
- [Travel advice](#)
- [EPI-WIN](#): tailored information for individuals, organizations and communities

Case definitions

WHO periodically updates the [Global Surveillance for human infection with coronavirus disease \(COVID-19\)](#) document which includes surveillance definitions.

Definition of COVID-19 death

A COVID-19 death is defined for surveillance purposes as a death resulting from a clinically compatible illness in a probable or confirmed COVID-19 case, unless there is a clear alternative cause of death that cannot be related to COVID-19 disease (e.g. trauma). There should be no period of complete recovery between the illness and death.

Further guidance for certification and classification (coding) of COVID-19 as cause of death is available [here](#) and [here](#).

Annex 1: Data, table and figure notes

Caution must be taken when interpreting all data presented. Differences are to be expected between information products published by WHO, national public health authorities, and other sources using different inclusion criteria and different data cut-off times. While steps are taken to ensure accuracy and reliability, all data are subject to continuous verification and change. Case detection, definitions, testing strategies, reporting practice, and lag times differ between countries/territories/areas. These factors, amongst others, influence the counts presented, with variable underestimation of true case and death counts, and variable delays to reflecting these data at global level.

The designations employed, and the presentation of these materials do not imply the expression of any opinion whatsoever on the part of WHO concerning the legal status of any country, territory or area or of its authorities, or concerning the delimitation of its frontiers or boundaries. Dotted and dashed lines on maps represent approximate border lines for which there may not yet be full agreement. Countries, territories and areas are arranged under the administering WHO region.

The mention of specific companies or of certain manufacturers' products does not imply that they are endorsed or recommended by WHO in preference to others of a similar nature that are not mentioned. Errors and omissions excepted, the names of proprietary products are distinguished by initial capital letters.

[1] All references to Kosovo should be understood to be in the context of the United Nations Security Council resolution 1244 (1999). In the map, number of cases of Serbia and Kosovo (UNSCR 1244, 1999) have been aggregated for visualization purposes.

Counts reflect laboratory-confirmed cases and deaths, based on [WHO case definitions](#), unless stated otherwise (see Country, territory, or area-specific updates and errata), and include both domestic and repatriated cases.

Other*: includes cases reported from international conveyances.

Due to the recent trend of countries conducting data reconciliation exercises which remove large numbers of cases or deaths from their total counts, WHO will now display such data as negative numbers in the "new cases" / "new deaths" columns as appropriate. This will aid readers in identifying when such adjustments occur. When additional details become available that allow the subtractions to be suitably apportioned to previous days, graphics will be updated accordingly. Prior situation reports will not be edited; see covid19.who.int for the most up-to-date data.

Additional table notes

i Transmission classification is based on a process of country/territory/area self-reporting. Classifications are reviewed on a weekly basis and may be revised as new information becomes available. Differing degrees of transmission may be present within countries/territories/areas; classification is based on the highest category reported within a country/territory/area. Categories:

- No cases: with no confirmed cases
- Sporadic cases: with one or more cases, imported or locally detected
- Clusters of cases: experiencing cases, clustered in time, geographic location and/or by common exposures

- Community transmission: experiencing larger outbreaks of local transmission defined through an assessment of factors including, but not limited to: large numbers of cases not linkable to transmission chains; large numbers of cases from sentinel lab surveillance; and/or multiple unrelated clusters in several areas of the country/territory/area
- Pending: transmission classification has not been reported to WHO

ii “Territories” include territories, areas, overseas dependencies and other jurisdictions of similar status.

Country, territory, or area-specific updates and errata

- **Update 5 July 2020, Qatar:** Counts adjusted retrospectively by national authorities: 385 cases were excluded.