

# Coronavirus disease (COVID-19)

## Situation Report – 193

Data as received by WHO from national authorities by 10:00 CEST, 31 July 2020

### Highlights

In his regular [media briefing](#), WHO Director-General Dr Tedros highlighted the high rates of COVID-19 in long-term care facilities, drawing attention to a recently published WHO [policy brief](#). Dr Tedros also reminded us that COVID-19 is not only a disease that affects the elderly and that “young people must take the same precautions to protect themselves and protect others as everyone else. They can be leaders – they should be leaders and drivers of change.”

During this pandemic, even the strongest health systems in the world have been overwhelmed and unable to adequately provide essential health services and care for conditions not associated with COVID-19. In an address to the Virtual Symposium on the Impact of the COVID-19 Pandemic and HIV on SDG 3.3, WHO Regional Director for Europe, Dr Hans Henri P. Kluge emphasized the need to “[be on the alert to expand capacity to deal with a resurgence of COVID-19 and, at the same time, to maintain essential health services.](#)”

WHO has published [interim guidance](#) on the provision of safe water, sanitation and waste management and hygienic conditions which is essential for preventing disease and for protecting human health during all infectious disease outbreaks, including during the COVID-19 pandemic.

Today’s [Subject in Focus](#) highlights new guidance on public health considerations while resuming international travel.

### Situation in numbers (by WHO Region)

Total (new cases in last 24 hours)

<b>Globally</b>	17 106 007 cases (292 527)	668 910 deaths (6 812)
<b>Africa</b>	770 421 cases (16 031)	13 234 deaths (396)
<b>Americas</b>	9 152 173 cases (171 946)	351 121 deaths (4 567)
<b>Eastern Mediterranean</b>	1 533 357 cases (12 612)	39 661 deaths (458)
<b>Europe</b>	3 333 300 cases (25 241)	212 520 deaths (438)
<b>South-East Asia</b>	2 009 963 cases (60 113)	44 031 deaths (914)
<b>Western Pacific</b>	306 052 cases (6 584)	8 330 deaths (39)

## Subject in Focus: Public health considerations while resuming international travel

In response to the COVID-19 pandemic, 198 countries/areas/territories have implemented measures that are significantly interfering with international traffic as defined under Article 43 of the International Health Regulations (IHR 2005). Only one third of the 198 countries have provided a public health rationale for these measures, and only a few countries conduct and communicate regular risk assessments and reviews of measures. As of 23 July 2020, only 63 of 198 countries/areas/territories have lifted measures that were implemented to restrict the international movement of people.

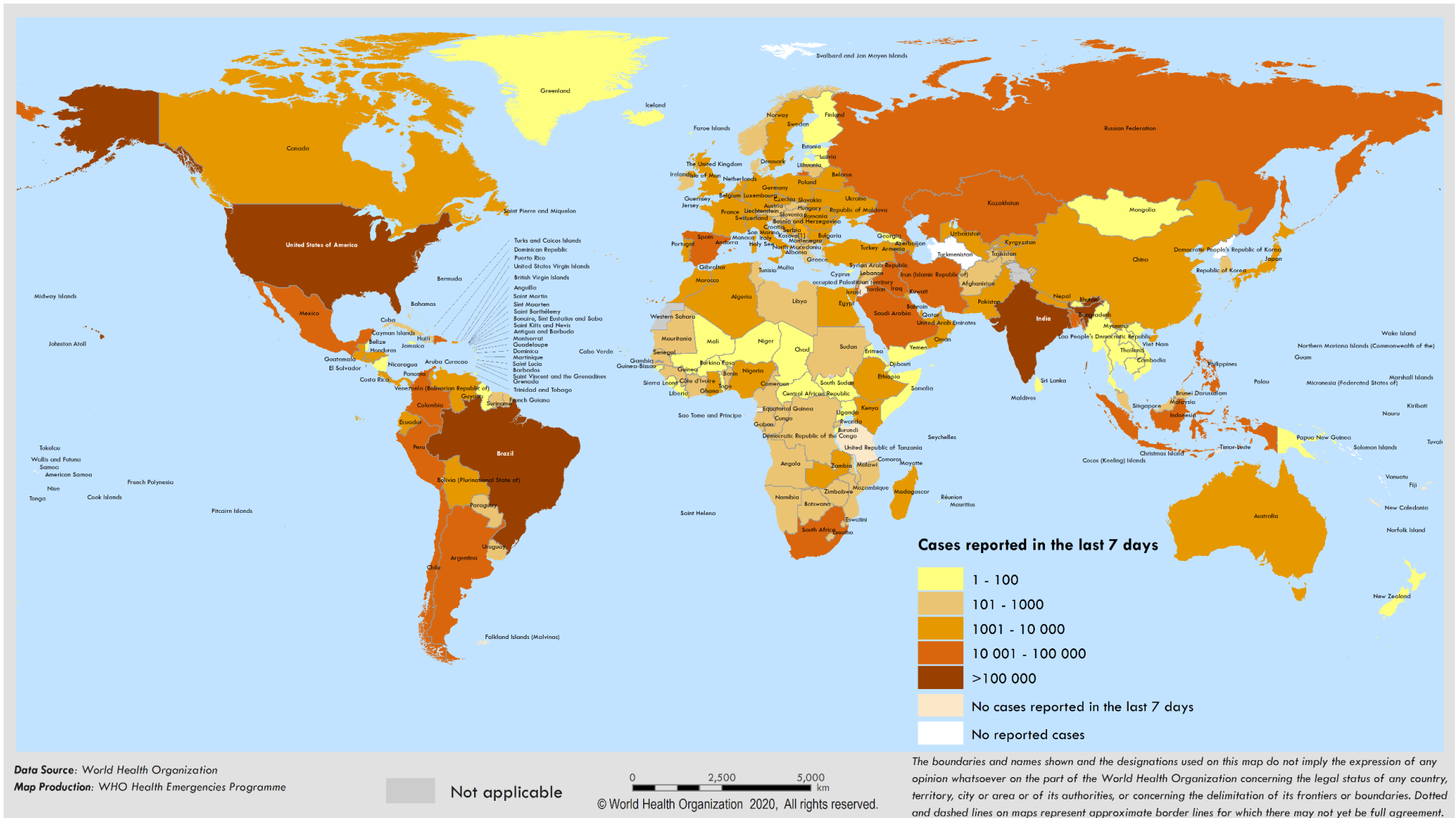
As countries consider to either gradually lift or re-introduce restrictions with the intention of controlling virus transmission, WHO published "[Public health considerations while resuming international travel](#)" in order to inform national decision-making processes. The publication advises countries to conduct risk assessments, as not doing so while restricting travel may have adverse effects on the overall public health situation.

The multi-sectoral risk assessment should take into account country context, the local epidemiology and transmission patterns, the national health and social measures to control the outbreak, and the capacities of health systems in both departure and destination countries, including at points of entry. Measures must be proportionate to the public health risks and should be regularly reassessed and communicated to the public.

The guidance underlines the importance of basic surveillance, isolation of cases, contact tracing and self-monitoring as well as risk communication and community engagement. Support for countries in defining their needs and priorities is also provided in the form of an overview of capacities at points of entry along with considerations for the use of digital tools and immunity certificates.

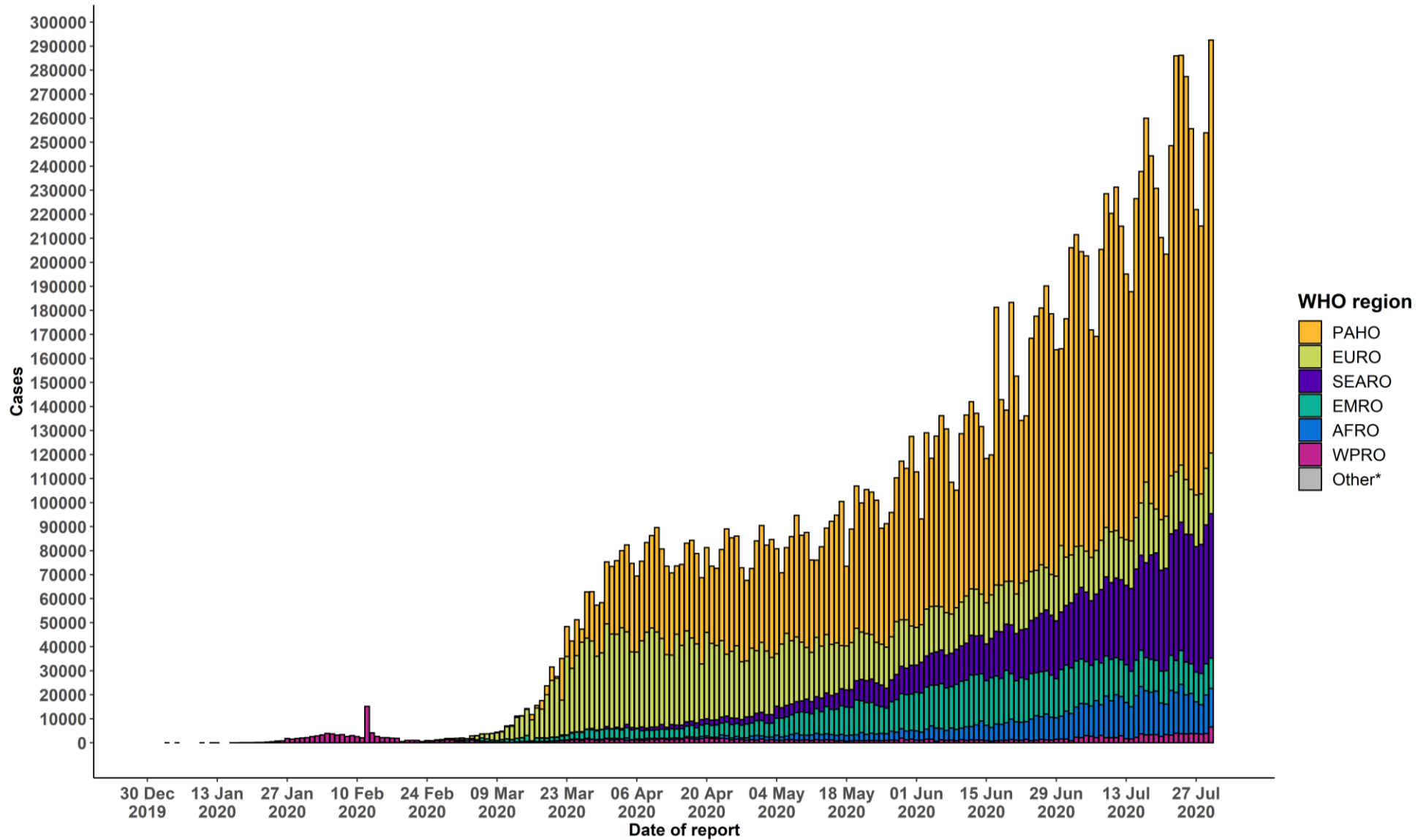
# Surveillance

Figure 1. Number of confirmed\* COVID-19 cases reported in the last seven days by country, territory or area, 25 July to 31 July \*\*



\*\*See [Annex 1](#) for data, table and figure notes.

Figure 2. Number of confirmed\* COVID-19 cases, by date of report and WHO region, 30 December through 31 July\*\*



\*\*See [Annex 1](#) for data, table and figure notes.

**Table 1. Countries, territories or areas with reported laboratory-confirmed\* COVID-19 cases and deaths, by WHO region. Data as of 10 AM CEST, 31 July 2020\*\***

Reporting Country/Territory/Area	Total confirmed* cases	Total confirmed* new cases	Total deaths	Total new deaths	Transmission classification <sup>i</sup>	Days since last reported case
<b>Africa</b>						
South Africa	482 169	11 046	7 812	315	Community transmission	0
Nigeria	42 689	481	878	5	Community transmission	0
Ghana	35 142	0	175	0	Community transmission	1
Algeria	29 831	602	1 200	14	Community transmission	0
Kenya	19 913	788	325	14	Community transmission	0
Cameroon	17 255	0	391	0	Community transmission	1
Ethiopia	16 615	805	263	10	Community transmission	0
Côte d'Ivoire	15 978	265	100	2	Community transmission	0
Madagascar	10 748	431	105	6	Community transmission	0
Senegal	10 106	145	204	4	Community transmission	0
Democratic Republic of the Congo	9 009	79	214	2	Community transmission	0
Gabon	7 352	0	49	0	Community transmission	1
Guinea	7 242	59	46	0	Community transmission	0
Mauritania	6 270	0	156	0	Community transmission	1
Zambia	5 555	306	149	3	Community transmission	0
Central African Republic	4 605	0	59	0	Community transmission	1
Malawi	3 981	123	109	2	Community transmission	0
Congo	3 376	176	56	2	Community transmission	0
Zimbabwe	3 092	213	53	12	Clusters of cases	0
Eswatini	2 577	26	40	0	Community transmission	0
Mali	2 522	1	124	0	Community transmission	0

Reporting Country/Territory/Area	Total confirmed* cases	Total confirmed* new cases	Total deaths	Total new deaths	Transmission classification <sup>1</sup>	Days since last reported case
Cabo Verde	2 418	45	23	0	Clusters of cases	0
Equatorial Guinea	2 350	0	41	0	Community transmission	14
South Sudan	2 322	0	46	0	Community transmission	2
Namibia	2 052	66	10	1	Clusters of cases	0
Rwanda	1 994	31	5	0	Clusters of cases	0
Guinea-Bissau	1 981	0	26	0	Community transmission	1
Sierra Leone	1 818	15	67	0	Community transmission	0
Mozambique	1 808	60	11	0	Community transmission	0
Benin	1 805	0	36	0	Community transmission	2
Liberia	1 181	2	73	1	Community transmission	0
Uganda	1 147	12	2	0	Clusters of cases	0
Niger	1 134	0	69	0	Community transmission	1
Burkina Faso	1 117	11	53	0	Community transmission	0
Angola	1 109	31	51	3	Clusters of cases	0
Chad	935	9	75	0	Community transmission	0
Togo	908	12	18	0	Community transmission	0
Sao Tome and Principe	870	2	15	0	Clusters of cases	0
Botswana	804	0	2	0	Clusters of cases	1
Lesotho	604	28	13	0	Clusters of cases	0
United Republic of Tanzania	509	0	21	0	Community transmission	84
Gambia	403	77	8	0	Sporadic cases	0
Burundi	387	9	1	0	Clusters of cases	0
Comoros	382	4	7	0	Community transmission	0

Reporting Country/Territory/Area	Total confirmed* cases	Total confirmed* new cases	Total deaths	Total new deaths	Transmission classification <sup>i</sup>	Days since last reported case
Mauritius	344	0	10	0	Sporadic cases	6
Eritrea	279	14	0	0	Sporadic cases	0
Seychelles	114	0	0	0	Sporadic cases	3
<b>Territories<sup>ii</sup></b>						
Mayotte	2 962	57	39	0	Clusters of cases	0
Réunion	657	0	4	0	Clusters of cases	5
<b>Americas</b>						
United States of America	4 388 566	65 406	150 054	1 414	Community transmission	0
Brazil	2 552 265	69 074	90 134	1 595	Community transmission	0
Mexico	408 449	5 752	45 361	485	Community transmission	0
Peru	400 683	5 678	18 816	204	Community transmission	0
Chile	353 536	1 961	9 377	99	Community transmission	0
Colombia	276 055	8 670	9 454	380	Community transmission	0
Argentina	178 996	5 641	3 311	111	Community transmission	0
Canada	115 470	476	8 917	5	Community transmission	0
Ecuador	84 370	1 177	5 657	34	Community transmission	0
Bolivia (Plurinational State of)	73 534	1 207	2 808	88	Community transmission	0
Dominican Republic	67 915	1 733	1 146	23	Community transmission	0
Panama	63 269	1 046	1 374	25	Community transmission	0
Guatemala	48 826	1 221	1 867	32	Community transmission	0
Honduras	40 944	484	1 259	45	Community transmission	0
Venezuela (Bolivarian Republic of)	17 159	588	154	3	Community transmission	0
Costa Rica	16 800	456	133	8	Community transmission	0
El Salvador	16 230	389	439	9	Community transmission	0

Reporting Country/Territory/Area	Total confirmed* cases	Total confirmed* new cases	Total deaths	Total new deaths	Transmission classification <sup>i</sup>	Days since last reported case
Haiti	7 378	7	159	1	Community transmission	0
Paraguay	4 866	192	46	1	Community transmission	0
Nicaragua	3 080	0	116	0	Community transmission	2
Cuba	2 597	9	87	0	Clusters of cases	0
Suriname	1 607	97	26	2	Clusters of cases	0
Uruguay	1 237	19	35	0	Clusters of cases	0
Jamaica	856	1	10	0	Clusters of cases	0
Bahamas	484	37	11	0	Clusters of cases	0
Guyana	398	2	20	0	Clusters of cases	0
Trinidad and Tobago	157	1	8	0	Sporadic cases	0
Barbados	110	0	7	0	Clusters of cases	3
Antigua and Barbuda	91	5	3	0	Clusters of cases	0
Saint Vincent and the Grenadines	52	0	0	0	Sporadic cases	7
Belize	48	0	2	0	Sporadic cases	5
Saint Lucia	25	1	0	0	Sporadic cases	0
Grenada	24	1	0	0	Clusters of cases	0
Dominica	18	0	0	0	Clusters of cases	48
Saint Kitts and Nevis	17	0	0	0	No cases	20
<b>Territories<sup>ii</sup></b>						
Puerto Rico	16 572	511	214	3	Community transmission	0
French Guiana	7 728	81	43	0	Community transmission	0
United States Virgin Islands	398	13	8	0	Community transmission	0
Martinique	269	0	15	0	Clusters of cases	6
Guadeloupe	244	0	14	0	Clusters of cases	1



Reporting Country/Territory/Area	Total confirmed* cases	Total confirmed* new cases	Total deaths	Total new deaths	Transmission classification <sup>1</sup>	Days since last reported case
Cayman Islands	203	0	1	0	Sporadic cases	16
Bermuda	156	0	9	0	Sporadic cases	1
Sint Maarten	126	5	15	0	Community transmission	0
Aruba	119	0	3	0	Sporadic cases	3
Turks and Caicos Islands	104	5	2	0	Clusters of cases	0
Saint Martin	53	0	3	0	Sporadic cases	1
Curaçao	29	0	1	0	Sporadic cases	6
Falkland Islands (Malvinas)	13	0	0	0	No cases	96
Montserrat	13	0	1	0	No cases	4
Bonaire, Sint Eustatius and Saba	11	0	0	0	Sporadic cases	7
British Virgin Islands	8	0	1	0	No cases	76
Saint Barthélemy	8	0	0	0	No cases	1
Saint Pierre and Miquelon	4	0	0	0	Sporadic cases	14
Anguilla	3	0	0	0	No cases	118
<b>Eastern Mediterranean</b>						
Iran (Islamic Republic of)	301 530	2 621	16 569	226	Community transmission	0
Pakistan	278 305	903	5 951	27	Clusters of cases	0
Saudi Arabia	274 219	1 629	2 869	53	Clusters of cases	0
Iraq	121 263	2 963	4 671	68	Community transmission	0
Qatar	110 460	307	171	2	Community transmission	0
Egypt	93 757	401	4 774	46	Clusters of cases	0
Oman	79 159	590	421	9	Community transmission	0
Kuwait	66 529	626	445	1	Clusters of cases	0
United Arab Emirates	60 223	302	349	2	Community transmission	0

Reporting Country/Territory/Area	Total confirmed* cases	Total confirmed* new cases	Total deaths	Total new deaths	Transmission classification <sup>i</sup>	Days since last reported case
Bahrain	40 755	444	146	2	Clusters of cases	0
Afghanistan	36 542	0	1 271	0	Clusters of cases	1
Morocco	23 259	1 046	346	12	Clusters of cases	0
Sudan	11 496	0	725	0	Community transmission	3
Djibouti	5 081	0	58	0	Clusters of cases	1
Lebanon	4 334	129	57	2	Clusters of cases	0
Libya	3 222	205	71	4	Clusters of cases	0
Somalia	3 212	0	93	0	Sporadic cases	2
Yemen	1 730	15	488	2	Community transmission	0
Tunisia	1 514	26	50	0	Sporadic cases	0
Jordan	1 191	4	11	0	Clusters of cases	0
Syrian Arab Republic	738	21	41	1	Community transmission	0
<b>Territories<sup>ii</sup></b>						
occupied Palestinian territory	14 838	380	84	1	Clusters of cases	0
<b>Europe</b>						
Russian Federation	839 981	5 482	13 963	161	Clusters of cases	0
The United Kingdom	302 305	846	45 999	38	Community transmission	0
Spain	285 430	2 789	28 443	2	Clusters of cases	0
Italy	247 158	382	35 132	3	Clusters of cases	0
Turkey	229 891	967	5 674	15	Community transmission	0
Germany	207 828	902	9 134	6	Clusters of cases	0
France	174 648	1 193	30 136	16	Clusters of cases	0
Kazakhstan	89 078	1 414	793	0	Clusters of cases	0
Sweden	80 100	318	5 739	9	Community transmission	0

Reporting Country/Territory/Area	Total confirmed* cases	Total confirmed* new cases	Total deaths	Total new deaths	Transmission classification <sup>1</sup>	Days since last reported case
Ukraine	69 884	1 090	1 693	20	Community transmission	0
Israel	68 492	1 965	493	7	Community transmission	0
Belgium	67 913	0	9 840	0	Community transmission	1
Belarus	67 808	143	559	6	Community transmission	0
Netherlands	53 963	342	6 147	0	Community transmission	0
Portugal	50 868	255	1 727	2	Clusters of cases	0
Romania	49 591	1 356	2 304	35	Community transmission	0
Poland	45 031	615	1 709	15	Community transmission	0
Armenia	38 550	354	738	10	Community transmission	0
Kyrgyzstan	35 805	662	1 378	14	Clusters of cases	0
Switzerland	34 933	219	1 703	1	Community transmission	0
Azerbaijan	31 560	339	441	3	Clusters of cases	0
Ireland	26 027	85	1 763	0	Clusters of cases	0
Serbia	25 213	321	565	7	Community transmission	0
Republic of Moldova	24 343	396	771	9	Community transmission	0
Uzbekistan	23 558	686	137	5	Clusters of cases	0
Austria	21 009	163	718	2	Community transmission	0
Czechia	16 342	249	379	5	Clusters of cases	0
Denmark	13 725	91	615	1	Community transmission	0
Bosnia and Herzegovina	11 442	313	324	12	Community transmission	0
Bulgaria	11 420	265	374	6	Clusters of cases	0
North Macedonia	10 617	117	480	4	Clusters of cases	0
Norway	9 172	22	255	0	Clusters of cases	0
Finland	7 423	9	329	0	Clusters of cases	0

Reporting Country/Territory/Area	Total confirmed* cases	Total confirmed* new cases	Total deaths	Total new deaths	Transmission classification <sup>i</sup>	Days since last reported case
Tajikistan	7 366	46	60	0	Pending	0
Luxembourg	6 616	83	114	0	Community transmission	0
Albania	5 197	92	154	4	Clusters of cases	0
Croatia	5 071	148	144	3	Clusters of cases	0
Hungary	4 505	21	596	0	Community transmission	0
Greece	4 401	65	203	0	Clusters of cases	0
Montenegro	3 111	46	48	1	Clusters of cases	0
Slovakia	2 265	20	28	0	Clusters of cases	0
Slovenia	2 139	24	117	0	Clusters of cases	0
Lithuania	2 062	19	80	0	Community transmission	0
Estonia	2 051	9	69	0	Sporadic cases	0
Iceland	1 872	11	10	0	Community transmission	0
Latvia	1 228	4	31	0	Clusters of cases	0
Georgia	1 168	8	17	0	Sporadic cases	0
Cyprus	1 084	4	19	0	Clusters of cases	0
Andorra	922	4	52	0	Community transmission	0
Malta	814	28	9	0	Sporadic cases	0
San Marino	716	0	42	0	Community transmission	21
Monaco	99	0	1	0	Sporadic cases	54
Liechtenstein	89	1	1	0	Sporadic cases	0
Holy See	12	0	0	0	Sporadic cases	85
<b>Territories<sup>ii</sup></b>						
Kosovo <sup>[1]</sup>	8 061	258	202	16	Community transmission	0

Reporting Country/Territory/Area	Total confirmed* cases	Total confirmed* new cases	Total deaths	Total new deaths	Transmission classification <sup>1</sup>	Days since last reported case
Isle of Man	336	0	24	0	No cases	70
Jersey	335	0	31	0	Community transmission	1
Guernsey	252	0	13	0	Community transmission	89
Faroe Islands	220	0	0	0	Sporadic cases	2
Gibraltar	186	0	0	0	Clusters of cases	1
Greenland	14	0	0	0	No cases	2
<b>South-East Asia</b>						
India	1 638 870	55 078	35 747	779	Clusters of cases	0
Bangladesh	234 889	2 695	3 083	48	Community transmission	0
Indonesia	106 336	1 904	5 058	83	Community transmission	0
Nepal	19 547	274	52	3	Clusters of cases	0
Maldives	3 719	152	16	1	Clusters of cases	0
Thailand	3 310	6	58	0	Clusters of cases	0
Sri Lanka	2 814	4	11	0	Clusters of cases	0
Myanmar	353	0	6	0	Clusters of cases	1
Bhutan	101	0	0	0	Sporadic cases	1
Timor-Leste	24	0	0	0	No cases	98
<b>Western Pacific</b>						
Philippines	89 374	3 888	1 983	21	Community transmission	0
China	87 956	276	4 666	1	Clusters of cases	0
Singapore	51 809	278	27	0	Clusters of cases	0
Japan	34 372	1 323	1 006	2	Clusters of cases	0
Australia	16 303	721	189	13	Clusters of cases	0

Reporting Country/Territory/Area	Total confirmed* cases	Total confirmed* new cases	Total deaths	Total new deaths	Transmission classification <sup>i</sup>	Days since last reported case
Republic of Korea	14 305	36	301	1	Clusters of cases	0
Malaysia	8 964	8	124	0	Clusters of cases	0
New Zealand	1 210	0	22	0	Clusters of cases	1
Viet Nam	509	50	0	0	Clusters of cases	0
Mongolia	291	0	0	0	Sporadic cases	1
Cambodia	234	0	0	0	Sporadic cases	1
Brunei Darussalam	141	0	3	0	No cases	84
Papua New Guinea	63	0	2	1	Sporadic cases	2
Fiji	27	0	0	0	Sporadic cases	10
Lao People's Democratic Republic	20	0	0	0	Sporadic cases	6
<b>Territories<sup>ii</sup></b>						
Guam	348	2	5	0	Clusters of cases	0
French Polynesia	62	0	0	0	Sporadic cases	33
Northern Mariana Islands (Commonwealth of the)	42	2	2	0	Pending	0
New Caledonia	22	0	0	0	Sporadic cases	16
<b>Subtotal for all regions</b>	<b>17 105 266</b>	<b>292 527</b>	<b>668 897</b>	<b>6 812</b>		
Other <sup>†</sup>	741	0	13	0	Not applicable	-
<b>Grand total</b>	<b>17 106 007</b>	<b>292 527</b>	<b>668 910</b>	<b>6 812</b>		

**\*\*See [Annex 1](#) for data, table and figure notes.**

---

## Technical guidance and other resources

- To view all technical guidance documents regarding COVID-19, please go to [this webpage](#).
- Updates from WHO regional offices
  - [WHO AFRO](#)
  - [WHO PAHO](#)
  - [WHO EMRO](#)
  - [WHO SEARO](#)
  - [WHO EURO](#)
  - [WHO WPRO](#)
- [Research and Development](#)
- [Online courses on COVID-19](#) and in [additional national languages](#)
- [The Strategic Preparedness and Response Plan](#) (SPRP) outlining the support the international community can provide to all countries to prepare and respond to the virus
- [WHO Coronavirus Disease \(COVID-19\) Dashboard](#)
- [Weekly COVID-19 Operations Updates](#)

---

## Recommendations and advice for the public

- [Protect yourself](#)
- [Questions and answers](#)
- [Travel advice](#)
- [EPI-WIN](#): tailored information for individuals, organizations and communities

---

## Case definitions

WHO periodically updates the [Global Surveillance for human infection with coronavirus disease \(COVID-19\)](#) document which includes surveillance definitions.

### Definition of COVID-19 death

A COVID-19 death is defined for surveillance purposes as a death resulting from a clinically compatible illness in a probable or confirmed COVID-19 case, unless there is a clear alternative cause of death that cannot be related to COVID-19 disease (e.g. trauma). There should be no period of complete recovery between the illness and death.

Further guidance for certification and classification (coding) of COVID-19 as cause of death is available [here](#) and [here](#).

---

## Annex 1: Data, table and figure notes

Caution must be taken when interpreting all data presented. Differences are to be expected between information products published by WHO, national public health authorities, and other sources using different inclusion criteria and different data cut-off times. While steps are taken to ensure accuracy and reliability, all data are subject to continuous verification and change. Case detection, definitions, testing strategies, reporting practice, and lag times differ between countries/territories/areas. These factors, amongst others, influence the counts presented, with variable underestimation of true case and death counts, and variable delays to reflecting these data at global level.

The designations employed, and the presentation of these materials do not imply the expression of any opinion whatsoever on the part of WHO concerning the legal status of any country, territory or area or of its authorities, or concerning the delimitation of its frontiers or boundaries. Dotted and dashed lines on maps represent approximate border lines for which there may not yet be full agreement. Countries, territories and areas are arranged under the administering WHO region.

The mention of specific companies or of certain manufacturers' products does not imply that they are endorsed or recommended by WHO in preference to others of a similar nature that are not mentioned. Errors and omissions excepted, the names of proprietary products are distinguished by initial capital letters.

[<sup>1</sup>] All references to Kosovo should be understood to be in the context of the United Nations Security Council resolution 1244 (1999). In the map, number of cases of Serbia and Kosovo (UNSCR 1244, 1999) have been aggregated for visualization purposes.

\*A small number of countries/territories/areas report combined probable and laboratory-confirmed cases; efforts are underway to identify these for notation in the data table. †Other: includes cases reported from international conveyances.

Due to the recent trend of countries conducting data reconciliation exercises which remove large numbers of cases or deaths from their total counts, WHO will now display such data as negative numbers in the “new cases” / “new deaths” columns as appropriate. This will aid readers in identifying when such adjustments occur. When additional details become available that allow the subtractions to be suitably apportioned to previous days, graphics will be updated accordingly. Prior situation reports will not be edited; see [covid19.who.int](https://covid19.who.int) for the most up-to-date data.

### Additional table notes

<sup>i</sup> Transmission classification is based on a process of country/territory/area self-reporting. Classifications are reviewed on a weekly basis and may be revised as new information becomes available. Differing degrees of transmission may be present within countries/territories/areas; classification is based on the highest category reported within a country/territory/area. Categories:

- No cases: with no confirmed cases;
- Sporadic cases: with one or more cases, imported or locally detected;
- Clusters of cases: experiencing cases, clustered in time, geographic location and/or by common exposures;



- Community transmission: experiencing larger outbreaks of local transmission defined through an assessment of factors including, but not limited to: large numbers of cases not linkable to transmission chains; large numbers of cases from sentinel lab surveillance; and/or multiple unrelated clusters in several areas of the country/territory/area;
- Pending: transmission classification has not been reported to WHO.

ii “Territories” include territories, areas, overseas dependencies and other jurisdictions of similar status.

### **Country, territory, or area-specific notes, updates and errata**

- **Update 31 July 2020, Ireland:** Counts adjusted retrospectively by national authorities: case and death counts adjusted for 1–19 March, 25 May, 31 May, 26–30 July.
- **Update 31 July 2020, Belgium:** Counts adjusted retrospectively by national authorities: case and death counts adjusted for 18–30 July.
- **Update 31 July 2020, Guadeloupe:** Counts adjusted retrospectively by national authorities: case counts adjusted on 30 July.
- **Update 31 July 2020, Saint Barthélemy:** Counts adjusted retrospectively by national authorities: case counts adjusted on 30 July.
- **Update 31 July 2020, Saint Martin:** Counts adjusted retrospectively by national authorities: case counts adjusted on 30 July.