

# Coronavirus disease (COVID-19)

## Situation Report – 194

Data as received by WHO from national authorities by 10:00 CEST, 1 August 2020

### Highlights

The [fourth meeting of the International Health Regulations \(2005\) Emergency Committee](#) regarding COVID-19 was convened by the WHO Director-General on 31 July 2020. The Director-General declared that the outbreak of COVID-19 continues to constitute a public health emergency of international concern (PHEIC). [The recommendations from the Emergency Committee highlight the need for response efforts to continue over the long term.](#)

WHO has updated the interim guidance on [Water, sanitation, hygiene \(WASH\), and waste management for SARS-CoV-2](#). The document provides additional details on risks associated with excreta and untreated sewage, on hand hygiene, on protecting WASH workers and on supporting the continuation and strengthening of WASH services, especially in underserved areas.

WHO has published a [draft for Target Product Profiles \(TPP\) for COVID-19 therapeutics](#). The three sets of TPPs describe the preferred and minimally acceptable profiles for therapeutic agents for the treatment of those with COVID-19, ranging from mild through critically ill patients. Comments on this document are welcomed by submitting a [comment form](#). All forms should be completed with the details of the individual or organization providing the comment.

For [World Breastfeeding Week](#), WHO and UNICEF are calling on governments to protect and promote women's access to skilled breastfeeding counselling. This is a critical component of breastfeeding support and, amidst the COVID-19 pandemic, it is even more important to find innovative solutions to ensure that access to these essential services is not disrupted.

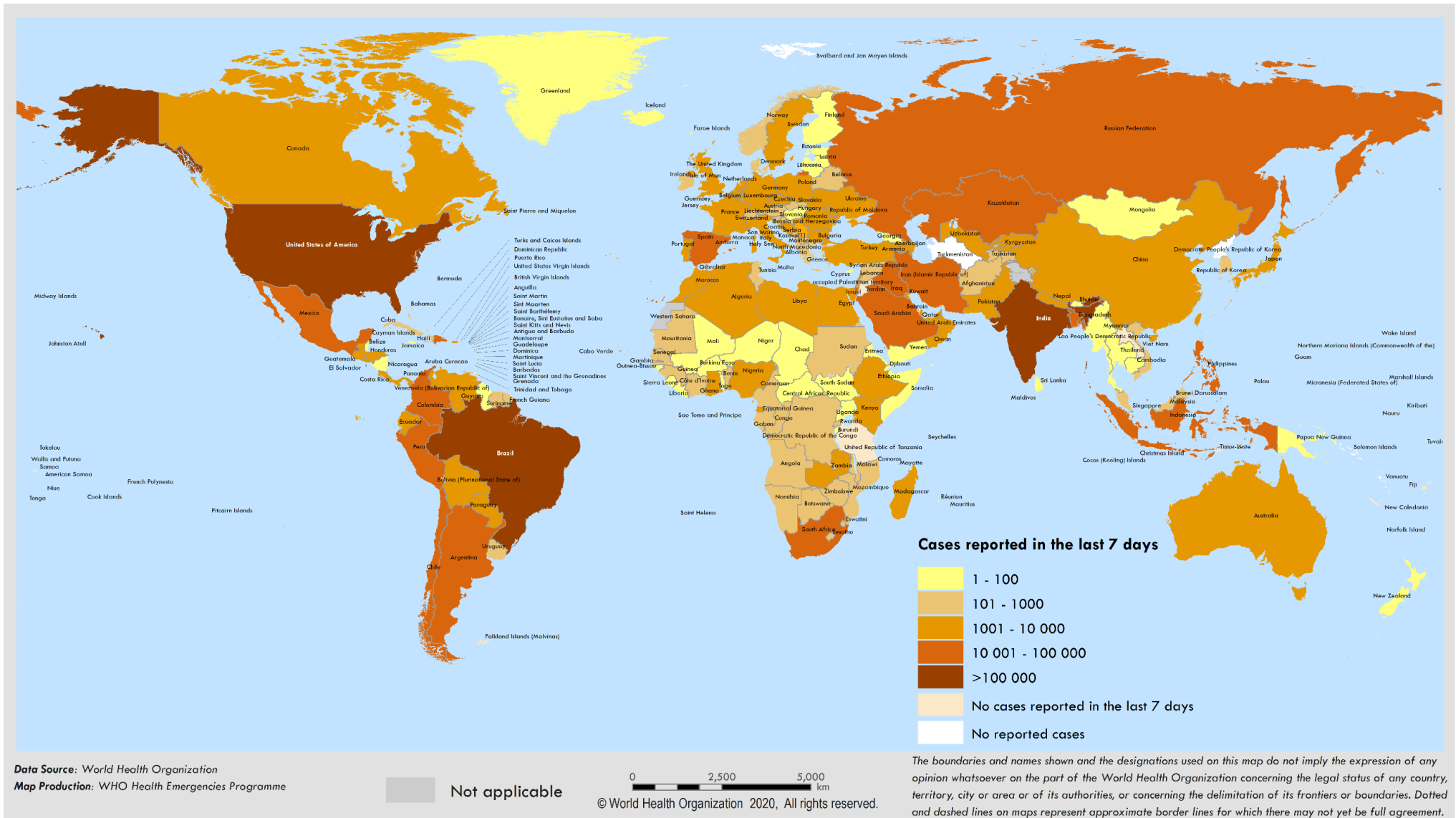
### Situation in numbers (by WHO Region)

Total (new cases in last 24 hours)

<b>Globally</b>	17 396 943 cases (289 321)	675 060 deaths (6 142)
<b>Africa</b>	788 448 cases (18 027)	13 545 deaths (311)
<b>Americas</b>	9 320 330 cases (168 157)	355 217 deaths (4 096)
<b>Eastern Mediterranean</b>	1 544 994 cases (11 637)	40 019 deaths (358)
<b>Europe</b>	3 357 465 cases (22 550)	212 978 deaths (450)
<b>South-East Asia</b>	2 072 194 cases (62 231)	44 900 deaths (869)
<b>Western Pacific</b>	312 771 cases (6 719)	8 388 deaths (58)

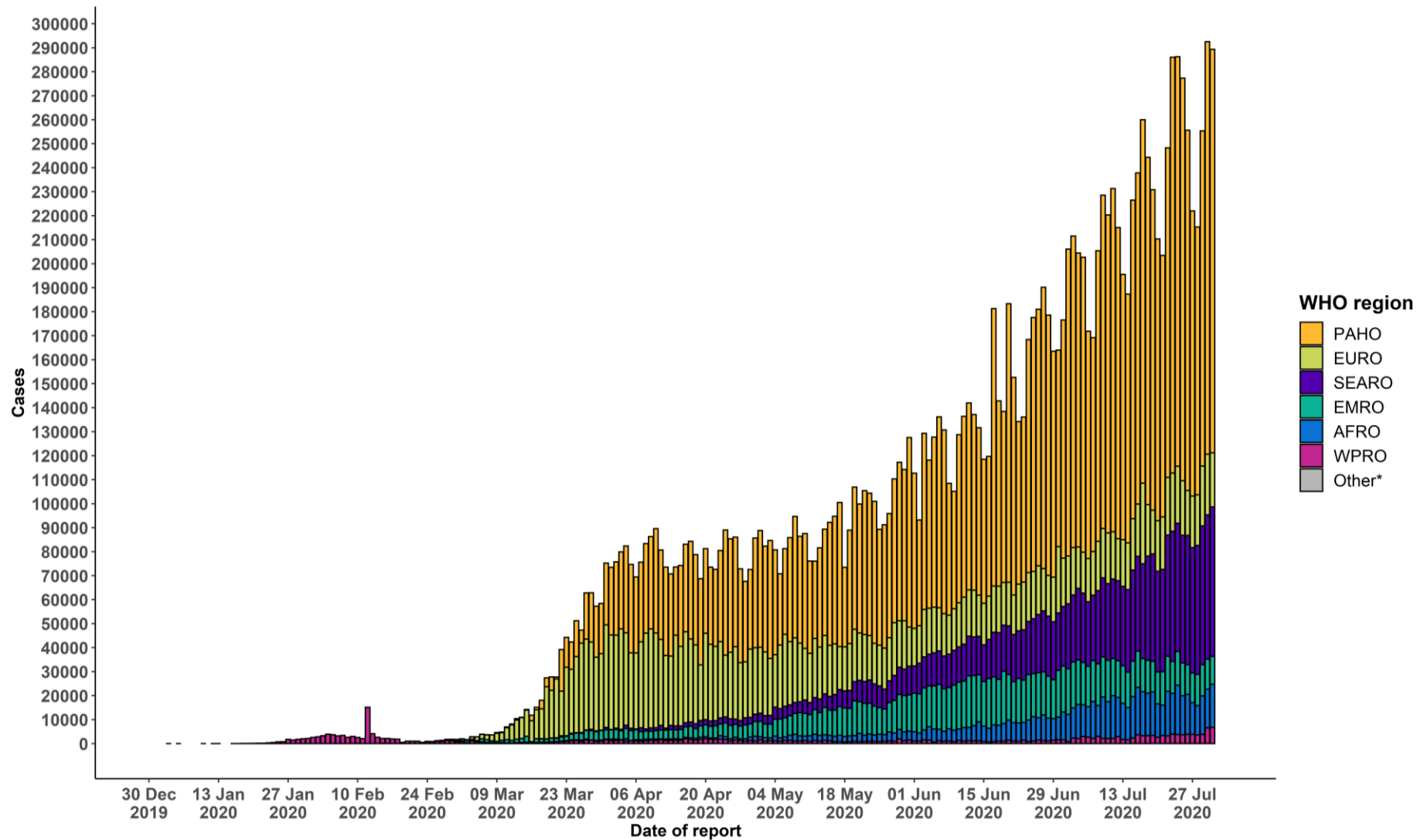
# Surveillance

Figure 1. Number of confirmed\* COVID-19 cases reported in the last seven days by country, territory or area, 26 July to 1 August \*\*



\*\*See [Annex 1](#) for data, table and figure notes.

Figure 2. Number of confirmed COVID-19 cases, by date of report and WHO region, 30 December through 1 August\*\*



\*\*See [Annex 1](#) for data, table and figure notes.

**Table 1. Countries, territories or areas with reported laboratory-confirmed\* COVID-19 cases and deaths, by WHO region. Data as of 10 AM CEST, 1 August 2020\*\***

Reporting Country/Territory/Area	Total confirmed* cases	Total confirmed* new cases	Total deaths	Total new deaths	Transmission classification <sup>i</sup>	Days since last reported case
<b>Africa</b>						
South Africa	493 183	11 014	8 005	193	Community transmission	0
Nigeria	43 151	462	879	1	Community transmission	0
Ghana	35 501	359	182	7	Community transmission	0
Algeria	30 394	563	1 210	10	Community transmission	0
Kenya	20 636	723	341	16	Community transmission	0
Ethiopia	17 530	915	274	11	Community transmission	0
Cameroon	17 255	0	391	0	Community transmission	2
Côte d'Ivoire	16 047	69	102	2	Community transmission	0
Madagascar	10 868	120	106	1	Community transmission	0
Senegal	10 232	126	205	1	Community transmission	0
Democratic Republic of the Congo	9 069	60	214	0	Community transmission	0
Gabon	7 352	0	49	0	Community transmission	2
Guinea	7 308	66	46	0	Community transmission	0
Mauritania	6 310	40	157	1	Community transmission	0
Zambia	5 963	408	151	2	Community transmission	0
Equatorial Guinea	4 821	2 471	83	42	Community transmission	0
Central African Republic	4 608	3	59	0	Community transmission	0
Malawi	4 078	97	114	5	Community transmission	0
Congo	3 376	0	56	0	Community transmission	1
Zimbabwe	3 169	77	67	14	Clusters of cases	0
Eswatini	2 648	71	40	0	Community transmission	0

Reporting Country/Territory/Area	Total confirmed* cases	Total confirmed* new cases	Total deaths	Total new deaths	Transmission classification <sup>1</sup>	Days since last reported case
Mali	2 522	0	124	0	Community transmission	1
Cabo Verde	2 451	33	23	0	Clusters of cases	0
South Sudan	2 352	30	46	0	Community transmission	0
Namibia	2 129	77	10	0	Clusters of cases	0
Rwanda	2 022	28	5	0	Clusters of cases	0
Guinea-Bissau	1 981	0	27	1	Community transmission	2
Mozambique	1 864	56	11	0	Community transmission	0
Sierra Leone	1 823	5	67	0	Community transmission	0
Benin	1 805	0	36	0	Community transmission	3
Liberia	1 186	5	75	2	Community transmission	0
Uganda	1 154	7	3	1	Clusters of cases	0
Burkina Faso	1 138	21	53	0	Community transmission	0
Niger	1 136	2	69	0	Community transmission	0
Angola	1 109	0	51	0	Clusters of cases	1
Chad	936	1	75	0	Community transmission	0
Togo	927	19	18	0	Community transmission	0
Sao Tome and Principe	871	1	15	0	Clusters of cases	0
Botswana	804	0	2	0	Clusters of cases	2
Lesotho	604	0	13	0	Clusters of cases	1
United Republic of Tanzania	509	0	21	0	Community transmission	85
Gambia	498	95	9	1	Sporadic cases	0
Burundi	387	0	1	0	Clusters of cases	1
Comoros	382	0	7	0	Community transmission	1

Reporting Country/Territory/Area	Total confirmed* cases	Total confirmed* new cases	Total deaths	Total new deaths	Transmission classification <sup>1</sup>	Days since last reported case
Mauritius	344	0	10	0	Sporadic cases	7
Eritrea	279	0	0	0	Sporadic cases	1
Seychelles	114	0	0	0	Sporadic cases	4
Territories <sup>ii</sup>						
Mayotte	2 962	0	39	0	Clusters of cases	1
Réunion	660	3	4	0	Clusters of cases	0
Americas						
United States of America	4 456 389	67 823	151 265	1 211	Community transmission	0
Brazil	2 610 102	57 837	91 263	1 129	Community transmission	0
Mexico	416 179	7 730	46 000	639	Community transmission	0
Peru	407 492	6 809	19 021	205	Community transmission	0
Chile	355 667	2 131	9 457	80	Community transmission	0
Colombia	286 020	9 965	9 810	356	Community transmission	0
Argentina	185 373	6 377	3 466	155	Community transmission	0
Canada	115 799	329	8 929	12	Community transmission	0
Ecuador	85 355	985	5 702	45	Community transmission	0
Bolivia (Plurinational State of)	75 234	1 700	2 894	86	Community transmission	0
Dominican Republic	69 649	1 734	1 160	14	Community transmission	0
Panama	64 191	922	1 397	23	Community transmission	0
Guatemala	49 789	963	1 924	57	Community transmission	0
Honduras	41 426	482	1 312	53	Community transmission	0
Venezuela (Bolivarian Republic of)	17 859	700	158	4	Community transmission	0
Costa Rica	17 290	490	140	7	Community transmission	0
El Salvador	16 632	402	448	9	Community transmission	0

Reporting Country/Territory/Area	Total confirmed* cases	Total confirmed* new cases	Total deaths	Total new deaths	Transmission classification <sup>i</sup>	Days since last reported case
Haiti	7 412	34	161	2	Community transmission	0
Paraguay	5 207	341	47	1	Community transmission	0
Nicaragua	3 080	0	116	0	Community transmission	3
Cuba	2 608	11	87	0	Clusters of cases	0
Suriname	1 650	43	26	0	Clusters of cases	0
Uruguay	1 243	6	35	0	Clusters of cases	0
Jamaica	864	8	10	0	Clusters of cases	0
Bahamas	508	24	14	3	Clusters of cases	0
Guyana	401	3	20	0	Clusters of cases	0
Trinidad and Tobago	169	12	8	0	Sporadic cases	0
Barbados	110	0	7	0	Clusters of cases	4
Antigua and Barbuda	91	0	3	0	Clusters of cases	1
Saint Vincent and the Grenadines	54	2	0	0	Sporadic cases	0
Belize	48	0	2	0	Sporadic cases	6
Saint Lucia	25	0	0	0	Sporadic cases	1
Grenada	24	0	0	0	Clusters of cases	1
Dominica	18	0	0	0	Clusters of cases	49
Saint Kitts and Nevis	17	0	0	0	No cases	21
<b>Territories<sup>ii</sup></b>						
Puerto Rico	16 781	209	219	5	Community transmission	0
French Guiana	7 799	71	43	0	Community transmission	0
United States Virgin Islands	406	8	8	0	Community transmission	0
Martinique	269	0	15	0	Clusters of cases	7
Guadeloupe	244	0	14	0	Clusters of cases	2

Reporting Country/Territory/Area	Total confirmed* cases	Total confirmed* new cases	Total deaths	Total new deaths	Transmission classification <sup>1</sup>	Days since last reported case
Cayman Islands	203	0	1	0	Sporadic cases	17
Bermuda	156	0	9	0	Sporadic cases	2
Sint Maarten	128	2	15	0	Community transmission	0
Aruba	120	1	3	0	Sporadic cases	0
Turks and Caicos Islands	107	3	2	0	Clusters of cases	0
Saint Martin	53	0	3	0	Sporadic cases	2
Curaçao	29	0	1	0	Sporadic cases	7
Falkland Islands (Malvinas)	13	0	0	0	No cases	97
Montserrat	13	0	1	0	No cases	5
Bonaire, Sint Eustatius and Saba	11	0	0	0	Sporadic cases	8
British Virgin Islands	8	0	1	0	No cases	77
Saint Barthélemy	8	0	0	0	No cases	2
Saint Pierre and Miquelon	4	0	0	0	Sporadic cases	15
Anguilla	3	0	0	0	No cases	119
<b>Eastern Mediterranean</b>						
Iran (Islamic Republic of)	304 204	2 674	16 766	197	Community transmission	0
Pakistan	278 305	0	5 951	0	Clusters of cases	1
Saudi Arabia	275 905	1 686	2 866	- 3	Clusters of cases	0
Iraq	124 609	3 346	4 741	70	Community transmission	0
Qatar	110 695	235	174	3	Community transmission	0
Egypt	94 078	321	4 805	31	Clusters of cases	0
Oman	79 159	0	421	0	Community transmission	1
Kuwait	66 957	428	447	2	Clusters of cases	0
United Arab Emirates	60 506	283	351	2	Community transmission	0



Reporting Country/Territory/Area	Total confirmed* cases	Total confirmed* new cases	Total deaths	Total new deaths	Transmission classification <sup>i</sup>	Days since last reported case
Bahrain	40 982	227	148	2	Clusters of cases	0
Afghanistan	36 710	168	1 283	12	Clusters of cases	0
Morocco	24 322	1 063	353	7	Clusters of cases	0
Sudan	11 644	148	746	21	Community transmission	0
Djibouti	5 081	0	58	0	Clusters of cases	2
Lebanon	4 555	221	59	2	Clusters of cases	0
Libya	3 621	399	74	3	Clusters of cases	0
Somalia	3 212	0	93	0	Sporadic cases	3
Yemen	1 732	2	494	6	Community transmission	0
Tunisia	1 535	21	50	0	Sporadic cases	0
Jordan	1 193	2	11	0	Clusters of cases	0
Syrian Arab Republic	757	19	43	2	Community transmission	0
<b>Territories<sup>ii</sup></b>						
occupied Palestinian territory	15 232	394	85	1	Clusters of cases	0
<b>Europe</b>						
Russian Federation	845 443	5 462	14 058	95	Clusters of cases	0
The United Kingdom	303 185	880	46 119	120	Community transmission	0
Spain	288 522	3 092	28 445	2	Clusters of cases	0
Italy	247 537	379	35 141	9	Clusters of cases	0
Turkey	230 873	982	5 691	17	Community transmission	0
Germany	209 653	955	9 148	7	Clusters of cases	0
France	175 920	1 272	30 147	11	Clusters of cases	0
Kazakhstan	90 367	1 289	793	0	Clusters of cases	0
Sweden	80 422	322	5 743	4	Community transmission	0

Reporting Country/Territory/Area	Total confirmed* cases	Total confirmed* new cases	Total deaths	Total new deaths	Transmission classification <sup>1</sup>	Days since last reported case
Ukraine	71 056	1 172	1 709	16	Community transmission	0
Belgium	68 658	0	9 841	0	Community transmission	1
Israel	68 492	0	493	0	Community transmission	1
Belarus	67 808	0	559	0	Community transmission	1
Netherlands	54 301	338	6 147	0	Community transmission	0
Portugal	51 072	204	1 735	8	Clusters of cases	0
Romania	50 886	1 295	2 343	39	Community transmission	0
Poland	45 688	657	1 716	7	Community transmission	0
Armenia	38 841	291	749	11	Community transmission	0
Kyrgyzstan	36 299	494	1 397	19	Clusters of cases	0
Switzerland	34 933	0	1 703	0	Community transmission	1
Azerbaijan	31 878	318	448	7	Clusters of cases	0
Ireland	26 065	38	1 763	0	Clusters of cases	0
Serbia	25 552	339	573	8	Community transmission	0
Republic of Moldova	24 733	390	778	7	Community transmission	0
Uzbekistan	24 304	746	143	6	Clusters of cases	0
Austria	21 098	89	718	0	Community transmission	0
Czechia	16 574	232	382	3	Clusters of cases	0
Denmark	13 789	64	615	0	Community transmission	0
Bulgaria	11 690	270	383	9	Clusters of cases	0
Bosnia and Herzegovina	11 442	0	324	0	Community transmission	1
North Macedonia	10 762	145	486	6	Clusters of cases	0
Norway	9 208	36	255	0	Clusters of cases	0
Finland	7 432	9	329	0	Clusters of cases	0

Reporting Country/Territory/Area	Total confirmed* cases	Total confirmed* new cases	Total deaths	Total new deaths	Transmission classification <sup>i</sup>	Days since last reported case
Tajikistan	7 409	43	60	0	Pending	0
Luxembourg	6 695	79	114	0	Community transmission	0
Albania	5 276	79	157	3	Clusters of cases	0
Croatia	5 138	67	145	1	Clusters of cases	0
Hungary	4 505	0	596	0	Community transmission	1
Greece	4 477	76	206	3	Clusters of cases	0
Montenegro	3 184	73	49	1	Clusters of cases	0
Slovakia	2 292	27	29	1	Clusters of cases	0
Slovenia	2 165	26	117	0	Clusters of cases	0
Lithuania	2 075	13	80	0	Community transmission	0
Estonia	2 064	13	69	0	Sporadic cases	0
Iceland	1 885	13	10	0	Community transmission	0
Latvia	1 231	3	32	1	Clusters of cases	0
Georgia	1 171	3	17	0	Sporadic cases	0
Cyprus	1 114	30	19	0	Clusters of cases	0
Andorra	925	3	66	14	Community transmission	0
Malta	824	10	9	0	Sporadic cases	0
San Marino	716	0	42	0	Community transmission	22
Monaco	99	0	1	0	Sporadic cases	55
Liechtenstein	89	0	1	0	Sporadic cases	1
Holy See	12	0	0	0	Sporadic cases	86
<b>Territories<sup>ii</sup></b>						
Kosovo <sup>[1]</sup>	8 287	226	217	15	Community transmission	0

Reporting Country/Territory/Area	Total confirmed* cases	Total confirmed* new cases	Total deaths	Total new deaths	Transmission classification <sup>1</sup>	Days since last reported case
Isle of Man	336	0	24	0	No cases	71
Jersey	335	0	31	0	Community transmission	2
Guernsey	252	0	13	0	Community transmission	90
Faroe Islands	225	5	0	0	Sporadic cases	0
Gibraltar	187	1	0	0	Clusters of cases	0
Greenland	14	0	0	0	No cases	3
<b>South-East Asia</b>						
India	1 695 988	57 118	36 511	764	Clusters of cases	0
Bangladesh	237 661	2 772	3 111	28	Community transmission	0
Indonesia	108 376	2 040	5 131	73	Community transmission	0
Nepal	19 771	224	56	4	Clusters of cases	0
Maldives	3 793	74	16	0	Clusters of cases	0
Thailand	3 312	2	58	0	Clusters of cases	0
Sri Lanka	2 815	1	11	0	Clusters of cases	0
Myanmar	353	0	6	0	Clusters of cases	2
Bhutan	101	0	0	0	Sporadic cases	2
Timor-Leste	24	0	0	0	No cases	99
<b>Western Pacific</b>						
Philippines	93 354	3 980	2 023	40	Community transmission	0
China	88 122	166	4 668	2	Clusters of cases	0
Singapore	52 205	396	27	0	Clusters of cases	0
Japan	35 836	1 464	1 011	5	Clusters of cases	0
Australia	16 905	602	196	7	Clusters of cases	0

Reporting Country/Territory/Area	Total confirmed* cases	Total confirmed* new cases	Total deaths	Total new deaths	Transmission classification <sup>1</sup>	Days since last reported case
Republic of Korea	14 336	31	301	0	Clusters of cases	0
Malaysia	8 976	12	125	1	Clusters of cases	0
New Zealand	1 212	2	22	0	Clusters of cases	0
Viet Nam	558	49	2	2	Clusters of cases	0
Mongolia	291	0	0	0	Sporadic cases	2
Cambodia	239	5	0	0	Sporadic cases	0
Brunei Darussalam	141	0	3	0	No cases	85
Papua New Guinea	72	9	2	0	Sporadic cases	0
Fiji	27	0	1	1	Sporadic cases	11
Lao People's Democratic Republic	20	0	0	0	Sporadic cases	7
<b>Territories<sup>ii</sup></b>						
Guam	351	3	5	0	Clusters of cases	0
French Polynesia	62	0	0	0	Sporadic cases	34
Northern Mariana Islands (Commonwealth of the)	42	0	2	0	Pending	1
New Caledonia	22	0	0	0	Sporadic cases	17
<b>Subtotal for all regions</b>	<b>17 396 202</b>	<b>289 321</b>	<b>675 047</b>	<b>6 142</b>		
Other <sup>†</sup>	741	0	13	0	Not applicable	-
<b>Grand total</b>	<b>17 396 943</b>	<b>289 321</b>	<b>675 060</b>	<b>6 142</b>		

**\*\*See [Annex 1](#) for data, table and figure notes.**

---

## Technical guidance and other resources

- To view all technical guidance documents regarding COVID-19, please go to [this webpage](#).
- Updates from WHO regional offices
  - [WHO AFRO](#)
  - [WHO PAHO](#)
  - [WHO EMRO](#)
  - [WHO SEARO](#)
  - [WHO EURO](#)
  - [WHO WPRO](#)
- [Research and Development](#)
- [Online courses on COVID-19](#) and in [additional national languages](#)
- [The Strategic Preparedness and Response Plan](#) (SPRP) outlining the support the international community can provide to all countries to prepare and respond to the virus
- [WHO Coronavirus Disease \(COVID-19\) Dashboard](#)
- [Weekly COVID-19 Operations Updates](#)

---

## Recommendations and advice for the public

- [Protect yourself](#)
- [Questions and answers](#)
- [Travel advice](#)
- [EPI-WIN](#): tailored information for individuals, organizations and communities

---

## Case definitions

WHO periodically updates the [Global Surveillance for human infection with coronavirus disease \(COVID-19\)](#) document which includes surveillance definitions.

### Definition of COVID-19 death

A COVID-19 death is defined for surveillance purposes as a death resulting from a clinically compatible illness in a probable or confirmed COVID-19 case, unless there is a clear alternative cause of death that cannot be related to COVID-19 disease (e.g. trauma). There should be no period of complete recovery between the illness and death.

Further guidance for certification and classification (coding) of COVID-19 as cause of death is available [here](#) and [here](#).

---

## Annex 1: Data, table and figure notes

Caution must be taken when interpreting all data presented. Differences are to be expected between information products published by WHO, national public health authorities, and other sources using different inclusion criteria and different data cut-off times. While steps are taken to ensure accuracy and reliability, all data are subject to continuous verification and change. Case detection, definitions, testing strategies, reporting practice, and lag times differ between countries/territories/areas. These factors, amongst others, influence the counts presented, with variable underestimation of true case and death counts, and variable delays to reflecting these data at global level.

The designations employed, and the presentation of these materials do not imply the expression of any opinion whatsoever on the part of WHO concerning the legal status of any country, territory or area or of its authorities, or concerning the delimitation of its frontiers or boundaries. Dotted and dashed lines on maps represent approximate border lines for which there may not yet be full agreement. Countries, territories and areas are arranged under the administering WHO region.

The mention of specific companies or of certain manufacturers' products does not imply that they are endorsed or recommended by WHO in preference to others of a similar nature that are not mentioned. Errors and omissions excepted, the names of proprietary products are distinguished by initial capital letters.

[<sup>1</sup>] All references to Kosovo should be understood to be in the context of the United Nations Security Council resolution 1244 (1999). In the map, number of cases of Serbia and Kosovo (UNSCR 1244, 1999) have been aggregated for visualization purposes.

\*A small number of countries/territories/areas report combined probable and laboratory-confirmed cases; efforts are underway to identify these for notation in the data table. †Other: includes cases reported from international conveyances.

Due to the recent trend of countries conducting data reconciliation exercises which remove large numbers of cases or deaths from their total counts, WHO will now display such data as negative numbers in the “new cases” / “new deaths” columns as appropriate. This will aid readers in identifying when such adjustments occur. When additional details become available that allow the subtractions to be suitably apportioned to previous days, graphics will be updated accordingly. Prior situation reports will not be edited; see [covid19.who.int](https://covid19.who.int) for the most up-to-date data.

### Additional table notes

<sup>i</sup> Transmission classification is based on a process of country/territory/area self-reporting. Classifications are reviewed on a weekly basis and may be revised as new information becomes available. Differing degrees of transmission may be present within countries/territories/areas; classification is based on the highest category reported within a country/territory/area. Categories:

- No cases: with no confirmed cases;
- Sporadic cases: with one or more cases, imported or locally detected;
- Clusters of cases: experiencing cases, clustered in time, geographic location and/or by common exposures;

- Community transmission: experiencing larger outbreaks of local transmission defined through an assessment of factors including, but not limited to: large numbers of cases not linkable to transmission chains; large numbers of cases from sentinel lab surveillance; and/or multiple unrelated clusters in several areas of the country/territory/area;
- Pending: transmission classification has not been reported to WHO.

ii “Territories” include territories, areas, overseas dependencies and other jurisdictions of similar status.

### Country, territory, or area-specific notes, updates and errata

- **Update 1 August 2020, Austria:** Counts adjusted retrospectively by national authorities: case and death counts adjusted from 26 February to 22 March and from 22 July to 24 July. First case and first death also adjusted.
- **Update 1 August 2020, Belgium:** Counts adjusted retrospectively by national authorities: case and death counts from 2 July to 31 July.
- **Update 1 August 2020, Bulgaria:** Counts adjusted retrospectively by national authorities: case and death counts adjusted from 8 March to 21 March and 11 June.
- **Update 1 August 2020, Croatia:** Counts adjusted retrospectively by national authorities: case and death counts adjusted from 26 February to 22 March and 30 July.
- **Update 1 August 2020, Germany:** Counts adjusted retrospectively by national authorities: case and death counts adjusted from 28 February to 22 March, on 1 May, 14 July and 30-31 July. First death also adjusted.
- **Update 1 August 2020, Greece:** Counts adjusted retrospectively by national authorities: case and death counts adjusted from 27 February to 22 March and from 3 June to 8 June. First case also adjusted.
- **Update 1 August 2020, Hungary:** Counts adjusted retrospectively by national authorities: case and death counts adjusted from 5 March to 22 March and on 8 July. First case also adjusted.
- **Update 1 August 2020, Netherlands:** Counts adjusted retrospectively by national authorities: case and death counts adjusted from 27 February to 22 March and on 16 June. First case also adjusted.
- **Update 1 August 2020, Poland:** Counts adjusted retrospectively by national authorities: case and death counts adjusted from 4 March to 22 March and on 4 June. First case and first death also adjusted.