

Situational Report No. 01

Disease Outbreak/Event: COVID-19	Preparedness Response start date: 30 th January, 2020
Date of report: 13 th February, 2020	Prepared by: MOH/ZNPHI
Country: Zambia	Correspondence: Dr. K. Malama (malamakennedy@gmail.com)

1. CURRENT GLOBAL SITUATION UPDATE

- **Background:** On 31st December, 2019 China reported an outbreak of a novel coronavirus that was first reported in Wuhan, Hubei Province, now officially named COVID-19
- The WHO declared the outbreak a Public Health Emergency of International Concern (PHEIC) on 30th January, 2020.
- As of 12th February, 2020, the WHO reported that:
 - 45,171 cases had been reported globally
 - Of these, 44, 730 confirmed cases and 1114 deaths were reported in China.
- No confirmed cases have been reported from any African country to date.

Global Numbers

- 45,171 confirmed (2068 new)
- 1,115 deaths (97 new)
- **China**
 - 44,730 confirmed (2022 new)
 - 1,114 deaths (97 new)
- **Outside China (24 countries)**
 - 441 confirmed (46 new)
 - 1 death (0 new)

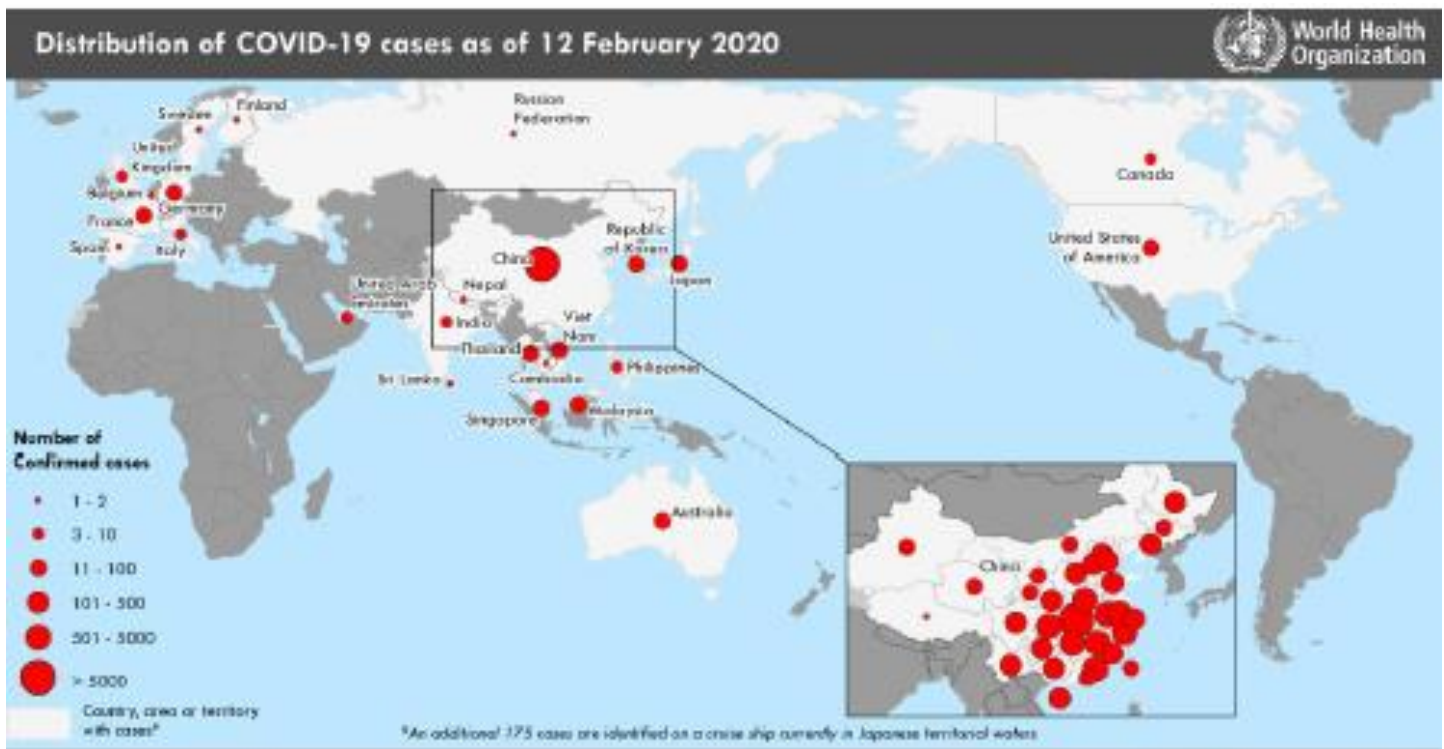


Figure 1: Countries, territories or areas reporting confirmed cases of COVID-19 as of 12th February, 2020 (Source: WHO)

2. ACTIONS TO DATE

2.1 CO-ORDINATION

- An Incident Management Structure (IMS) was set up at the Zambia National Public Health Institute following the declaration of the outbreak as a PHEIC. The IMS meets twice weekly to receive updates on preparedness efforts around the country. (Refer to Annex 1 for IMS structure)
- Technical co-ordinating meetings are being held with cooperating partners and other stakeholders. The meetings are chaired by the Director, ZNPFI.
- A meeting of the National Epidemic Preparedness, Prevention Control and Management Committee (NEPPC&MC), chaired by the Hon. Minister of Health, Dr Chitalu Chilufya, was held on 4th February 2020 at the Taj Pamodzi Hotel in Lusaka.
- A high level inter-ministerial coordinating meeting, chaired by the Secretary to the Cabinet, was held on 6th February, 2020; these meetings are scheduled to be held fortnightly.
- Technical guidelines for health care workers and staff at points of entry have been developed as part of preparedness efforts.
- A multi-sectoral emergency contingency plan has been developed by the Ministry of Health/ ZNPFI with support from the WHO



Figure 2: COVID-19 Contingency planning meeting with cooperating partners and stakeholders held at ZNPFI on 6th February 2020

2.2 HEALTH FACILITIES PREPAREDNESS

- Two main isolation facilities have been designated, i.e. Tubalange Mini Hospital in Chilanga and the New wing at Levy Mwanawasa Hospital Teaching Hospital (Not commisioned).
- Additional isolation facilities have been designated in other provinces (See Annex 2 for detailed list)
- Facilities have been provided with case definitions, SOPs, and other repoting tools



Figure 3: Chinese delegation visits the isolation facility at Tubalange Hospital in Chilanga

2.3 POINT OF ENTRY PREPAREDNESS

- Zambia has 16 designated POEs including 4 international airports
 - The ZNPFI conducted an orientation of POE staff at KKIA on 21st January, 2020. The orientation including Infection Prevention and Control (IPC) practices
 - MOH conducted orientation of staff at the other three international airports

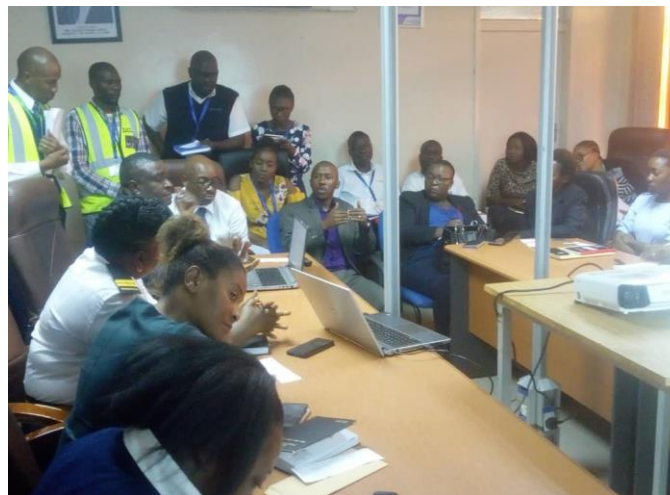


Figure 4: Orientation of staff at KKIA held on 21st January 2020 by the Zambia National Public Health Institute

- POE staff at the four international airports have been provided with PPE including gloves and face masks
- The POEs have also been provided with case definitions and risk assessment forms.
- Active passenger screening for COVID-19 is being performed. Table 1 below provides a summary from KKIA in Lusaka and SMKIA in Ndola.

Table 1: Passenger Screening Report from KKIA and SMKIA

REPORT DATE	POE	DAILY FIGURES				CUMULATIVE FIGURES (FROM 29/01/20)			
		# of Flights/buses received	Total passengers screened	Passengers from at risk countries	Passengers with fever	# of Flights/buses received	Total # of passengers screened	Passengers from at risk countries	Passengers with fever
11/02/2020	KKIA	12	522	173	0	203	10,092	1,987	1
11/02/2020	SMKIA	-	-	1	0	-	-	105	0
TOTAL		12	522	174	0	203	10,092	2,092	1

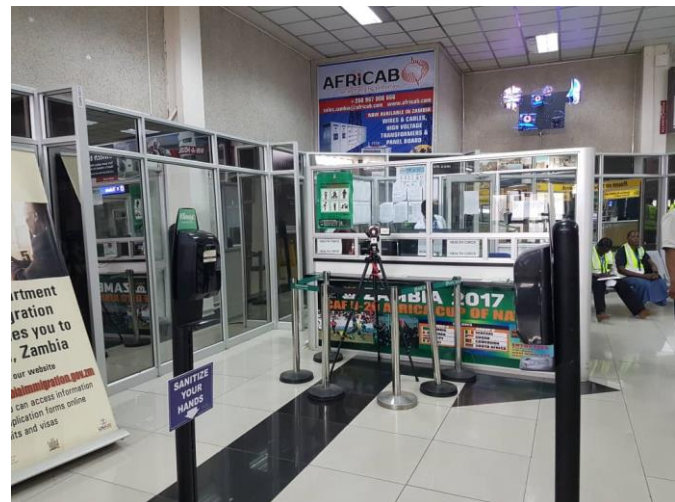
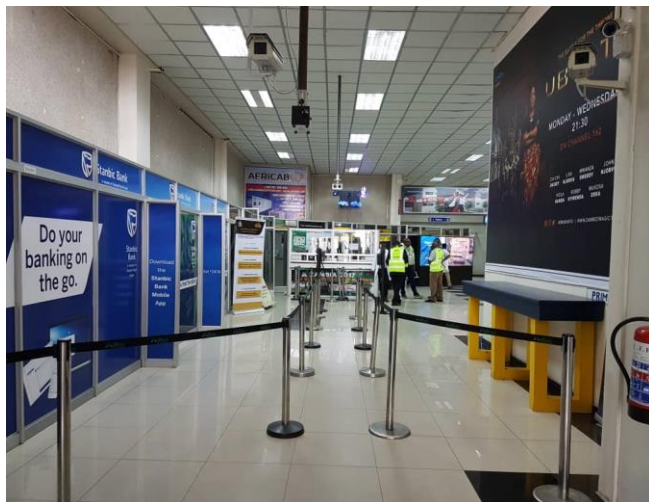


Figure 5: Passenger screening facilities set up at KKIA

2.4 SURVEILLANCE

- Event based surveillance has been heightened and is tracking alerts received regarding COVID-19
- As at 11th February 2020, Fourteen (14) alerts had been received and followed up; of these, five (5) had tested negative for COVID-19; eight (8) were not cases and did not meet case definition and did not require samples to be collected; one (1) was being followed-up and being investigated.

2.5 HEALTH PROMOTION AND RISK COMMUNICATION

- The Ministry of Health, in collaboration with its partners, has developed IEC materials on COV-19
- Interactive risk communication and health promotion programmes have been broadcast on a number of radio and television stations including ZNBC, Prime TV, QTV, Radio Phoenix, Radio Christian Voice, Kwitu FM, Hot FM and Money FM.
- Additional programmes have been scheduled and will continue to run as part of preparedness efforts
- Three hotlines (**0953-898941; 0964-638726; 0974-493553**) have been set up at the ZNPHI for the public to call for information regarding COVID-19.



Figure 6: One of the interactive health promotion programmes held on ZNBC television on COVID-19

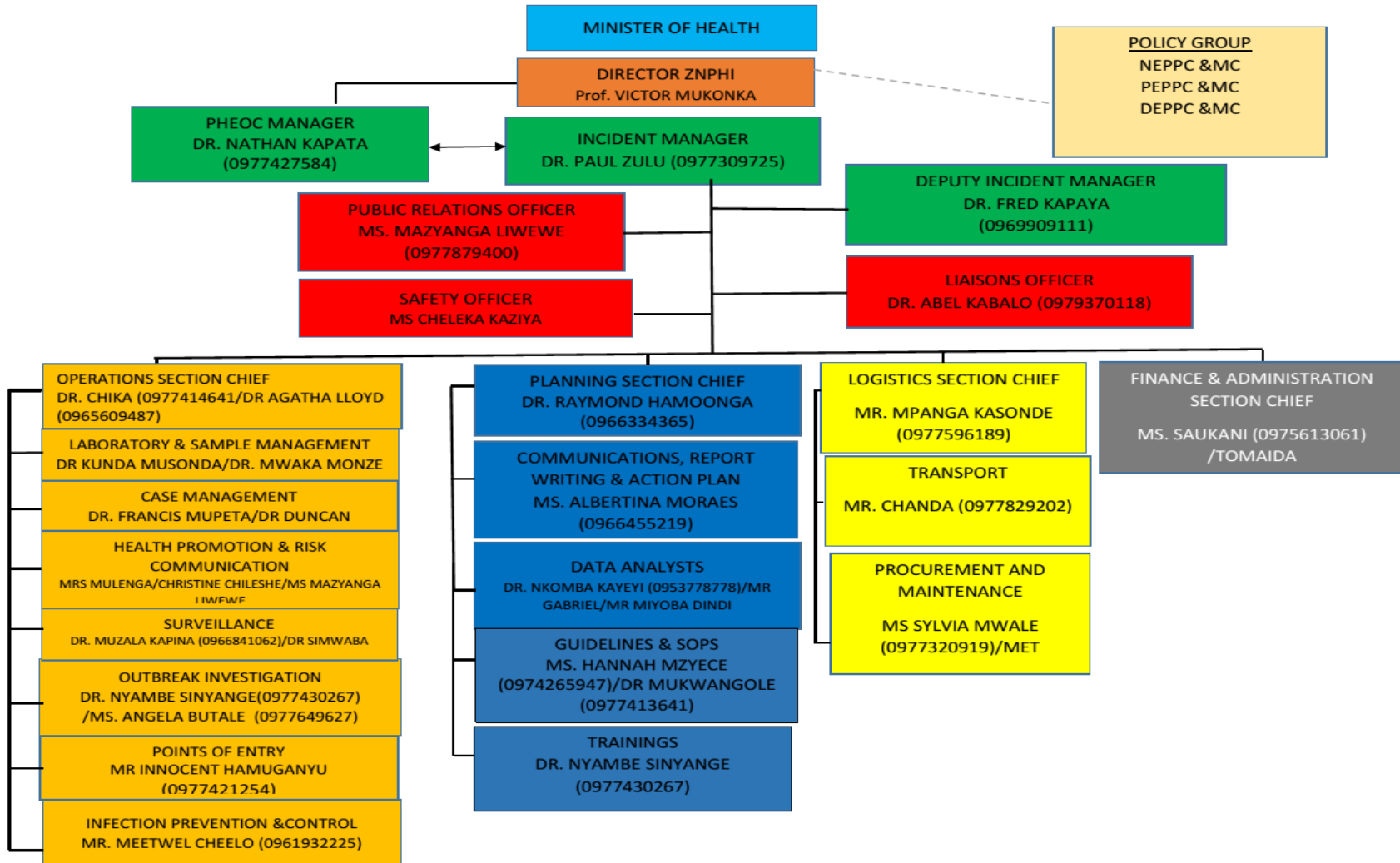
3. PRIORITY ACTIONS AND RECOMMENDATIONS

- Continued screening of travellers from affected regions
- Detailed training of frontline health workers and POE staff on COVID-19 preparedness and response
- Procurement of PPE and medical supplies (including diagnostics and laboratory consumables) and equipping of designated isolation facilities
- Printing and distribution of health promotion materials
- Early isolation of alerts and suspected cases
- Health education and risk communication

4. CONCLUSION

Zambia has been named among 13 African countries that are at high risk of importation of COVID-19. The Ministry of Health has heightened its surveillance efforts at all POE and preparedness efforts at health facilities. The Ministry will continue to coordinate efforts across sectors to ensure the health security of the Zambia population.

ANNEX 1: NATIONAL LEVEL INCIDENT MANAGEMENT SYSTEM FOR THE COVID-19 PREPAREDNESS RESPONSE



ANNEX 2: LIST OF DESIGNATED ISOLATION FACILITIES FOR THE COVID-19 PREPAREDNESS RESPONSE

PROVINCE	DISTRICT	ISOLATION FACILITY
Munchinga	Isoka	Lualizi and Kafwimbi RHC
Munchinga	Lavushimanda	Red Rhino school, Muwele Market .
Munchinga	Nakonde	Nakonde Hospital and Nakonde Urban Clinic.
Munchinga	Chama	FTC
Munchinga	Shiwang'andu	Lwanya RHC
Munchinga	Mpika	Chibansa RHC
Munchinga	Kanchibiya	Kopa Primary school ,LuchembeKanchibiya resettlement scheme,Chalabesa RHC.
Munchinga	Chinsali	Nambuluma RHC
Munchinga	Mafinga	Mulekatembo
Western	Senanga	Litambya RHC
Western	Shangombo	Shangombo Secondary School
Western		Shangombo RHC
Western	Kaoma	Kaoma Trades
Western		Kaoma Youth Resource Centre
Western	Luampa	Kahumbu Primary School
Western	Lukulu	Lukulu Old Hospital
Western	Mitete	Lukulu Old Hospital
Western	Kalabo	Wenela RHC

Western	Nalolo	Muoyo RHC
Western	Sioma	Old Nangwesh Refugee Camp
Western	Mulobezi	Mulobezi HAHC
Western	Mwandi	Situlu Health Post
Western	Sesheke	Mulimambango
Western	Sikongo	Sikongo RHC
Western	Limulunga	Nan'oko Health Post
Western		Mongu
Western		Mweeke HP
Western	Nkeyema	Nkeyema Zonal Health Centre
Central	Chitambo	Muchinka RHC
Central	Mkushi	Kasalamkanga RHC
Central	Serenje	Serenje Boma School
Central	Iuano	Old Mkushi Health Centre
Central	Kapiri	Tazara dry port
Central	Kabwe	Old Mukobeko clinic
Central	Chibombo	Twalumba RHC
Central	Chisamba	Malombe RHC
Central	Shibuyunji	Sichobo Rural Health Centre
Central	Mumbwa	Mumbwa Urban Clinic

Central	Itezhi tezhi	Itezhi tezhi Basic School/Uphill Scholl and and Itezhi Tezhi Boarding School
Central	Ngabwe	Iwonde primary school
Copperbelt	Chililabombwe	Council Hall
Copperbelt	Chingola	Kalilo Health Centre
Copperbelt	Kalulushi	Kalulushi Urban Health Centre
Copperbelt	Kitwe	Garnerton Clinic
Copperbelt	Luanshya	Chibolya Clinic
Copperbelt	Lufwanyama	Shimukunami Rural Health Centre
Copperbelt	Masaiti	Masaiti District Hospital
Copperbelt	Mpongwe	Bwembelelo Health Post
Copperbelt	Mufulira	Mutundu RHC
Copperbelt	Ndola	Itawa clinic (2019-nCoV), Main Masala clinic (Cholera)
Northern	Chilubi	Chaba RHC
Northern		Chilubi RHC
Northern	Kaputa	Kaputa RHC
Northern		Kalaba RHC
Northern		Kapepula HP

Northern	Kasama	Lukupu Rural Centre
Northern	Lunte	Chitoshi RHC
Northern		Mukupu Koama RHC
Northern		Mulenga Mapesa HP
Northern	Lupososhi	Chungu RHC
Northern		Nsombo RHC
Northern	Luwingu	Ipusikilo RHC
Northern	Mbala	Chulungoma Urban Clinic
Northern		Kaluluzi Health Post
Northern	Mporokoso	Township Clinic
Northern		Chiwala RHC
Northern	Mpulungu	Mpulungu Urban Clinic
Northern		Mpulungu Harbor Holding facility
Northern	Mungwi	Mungwi Baptist H. C
Northern		Kayambi RHC
Northern	Nsama	Nsumbu RHC
Northern	Senga	Mwiluzi Health Post
Northern		Sumbi Health Post