



Situational Report No. 02

Disease Outbreak/Event: COVID-19	Preparedness Response start date: 30 th January, 2020
Date of report: 25 th February, 2020	Prepared by: MOH/ZNPPI
Country: Zambia	Correspondence: Prof. V. Mukonka (vmukonka@gmail.com)



1. CURRENT GLOBAL SITUATION UPDATE

- **Background:** On 31st December, 2019 China reported an outbreak of a novel coronavirus disease, now officially named Coronavirus Disease 2019 (COVID-19), that was first reported in Wuhan, Hubei Province. Symptoms of the illness include fever, cough, and breathing difficulty. In severe cases, COVID-19 leads to pneumonia, kidney failure and may result in death.
- The WHO declared the outbreak a Public Health Emergency of International Concern (PHEIC) on 30th January, 2020.
- According to the WHO COVID situation report (No.35 of 24th February, 2020:
 - 79,331 cases and 2,618 deaths had been reported globally
 - Of these, 77, 262 confirmed cases and 2,595 deaths have been recorded in China alone.



Global Numbers as of 24/02/20

 79,331 confirmed (715 new)
 2,618 deaths (156 new)

- **China**

 77,262 confirmed (415 new)
 2,595 deaths (150 new)

- **Outside China (29 countries)**

 2,069 confirmed (300 new)
 23 deaths (6 new)

**New: in last 24hrs*

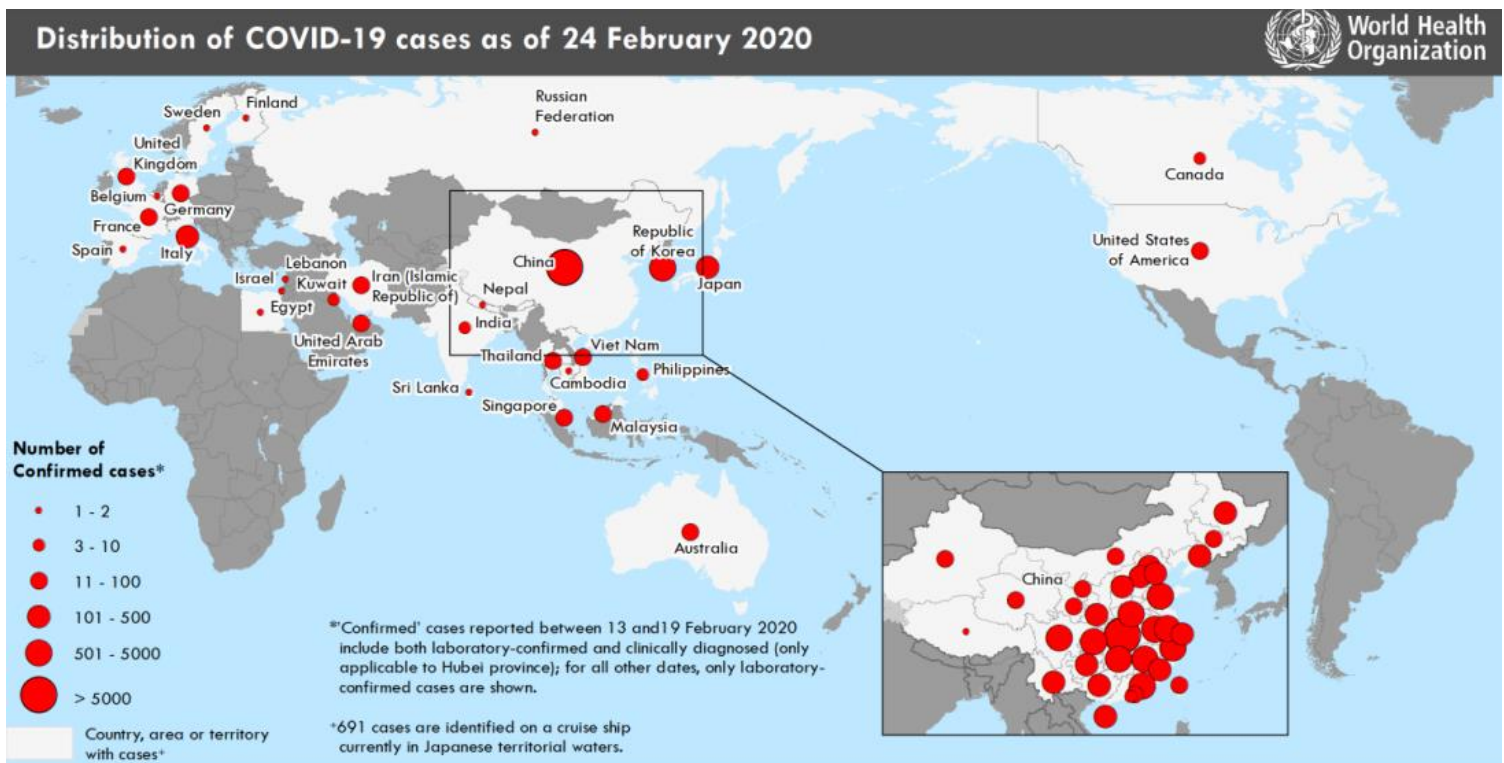


Figure 1: Countries, territories or areas reporting confirmed cases of COVID-19 as of 24th February, 2020 (Source: WHO)

- In Africa, one confirmed case was reported from Egypt on 14 February, 2020; all 17 contacts of the case tested negative for COVID-19 and have since been placed under home isolation.
- Persons under investigation (PUI) have been reported from Angola, Botswana, Burkina Faso, Cameroon, Cote d'Ivoire, Democratic Republic of the Congo (DRC), Ethiopia, Equatorial Guinea, Gabon, Ghana, Guinea, Kenya, Madagascar, Mauritius, Morocco, Mozambique, Namibia, Nigeria, South Africa, South Sudan, Sudan, Swaziland, Tunisia, Uganda, and Zimbabwe.
- The Africa CDC conducted a training in infection, prevention and control for COVID-19 hosted by Nigeria. Participants were drawn from countries including Zambia, Zimbabwe, South Africa, Namibia, Tunisia, South Sudan, Sudan, DRC, Mozambique, Madagascar, Mali, Senegal, Sierra Leone, Cote d'Ivoire, and Ghana.

Map of African countries with persons under investigation for COVID-19

23 February 2020

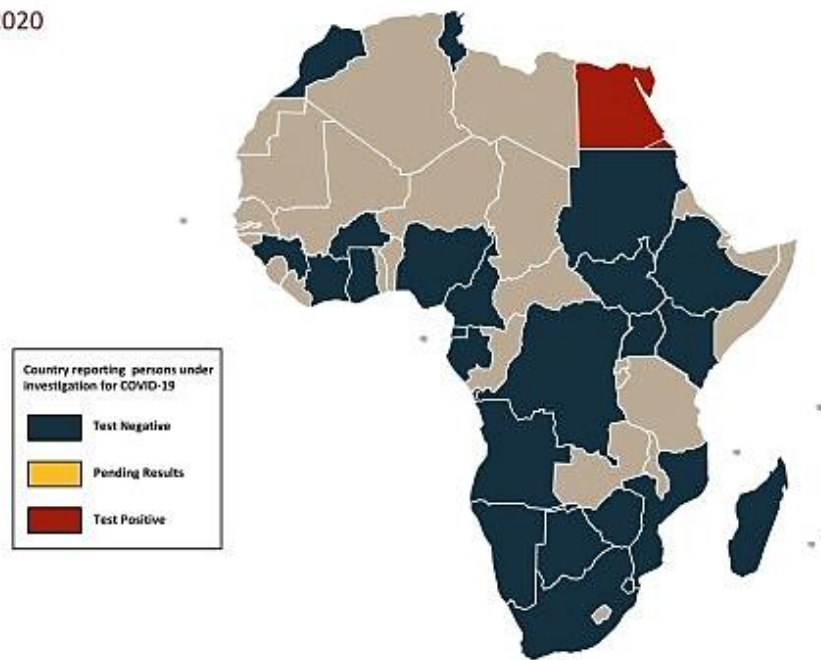


Figure 2: Map of African countries with persons under investigation for COVID-19 as of 23rd February, 2020 (Source: Africa CDC)

2. ACTIONS TO DATE

2.1 CO-ORDINATION

- An Incident Management Structure (IMS) was set up at the Zambia National Public Health Institute following the declaration of the outbreak as a PHEIC. The IMS meets twice weekly to receive updates on preparedness efforts around the country. (Refer to Annex 1 for IMS structure)
- Technical co-ordinating meetings are being held with cooperating partners and other stakeholders. The meetings are chaired by the Director, ZNPFI.
- National Epidemic Preparedness, Prevention Control and Management Committee (NEPPC&MC) Meetings, chaired by the Hon. Minister of Health, Dr Chitalu Chilufya, MP, MCC, are held regularly and the last one was held on 4th February 2020 at the Taj Pamodzi Hotel in Lusaka.
- High level inter-ministerial coordinating meeting, chaired by the Secretary to the Cabinet, are scheduled to be held fortnightly, the next meeting has been planned for 27th February, 2020.
- Technical guidelines for health care workers and staff at points of entry have been developed as part of preparedness efforts; electronic copies have been distributed and hard copies are yet to be printed.
- A multi-sectoral emergency contingency plan for COVID-19 has been developed by ZNPFI/ Ministry of Health with support from the WHO in collaboration with relevant stakeholders.

2.2 TRAINING

- Frontline FETP residents through the Surveillance and Disease Intelligence unit of the ZNPHI were oriented in monitoring and contact tracing for COVID-19.



Figure 3: Orientation meeting for FETP residents held in RCC boardroom, ZNPHI, on 20th February, 2020

2.3 POINT OF ENTRY PREPAREDNESS

Zambia has 16 designated POEs including 4 international airports and surveillance has been heightened at all the airports.

- POE staff at the four international airports have been provided with PPE including gloves and face masks. The POEs have also been provided with case definitions and risk assessment forms.
- Active passenger screening for COVID-19 is being performed. Travellers from affected regions are being quarantined either at home or at the designated facility depending on whether or not they are asymptomatic. Table 1 below provides a summary from KKIA in Lusaka and SMKIA in Ndola.

Table 1: Passenger Screening Report from Intercity, KKIA and SMKIA

REPORT DATE	POE	DAILY FIGURES				CUMULATIVE FIGURES			
		# of Flights/ buses received	Total passengers screened	Passengers from at risk countries	Passengers with fever	# of Flights/ buses received	Total # of passengers screened	Passengers from at risk countries	Passengers with fever
18/02/2020	KKIA	10	561	163	0	302	15,174	1,987	1
22/02/2020	SMKIA	-	-	7	0	-	-	243	0
19/02/2020	Intercity	53	318	0	0	-	823	-	0
Total		63	879	170	0	302	15,997	2,230	1

- Table 2 below provides a summary of the countries of origin of screened travellers at the POEs as well as their self-reported destinations after arrival in Zambia

Table 2: Self-reported Place of residence of screened passengers arriving in Zambia from at-risk countries

POE	Countries from which passengers departed	Destination within Zambia
KKIA	China, Japan, DRC, UK, Canada, Germany, Australia, Singapore, USA, Dubai, Spain, Philippines,	Lusaka, Ndola, Solwezi, Kafue, Kitwe, Chililabombwe, Luanshya, Chongwe, Mazabuka, Kabwe, Mufulira, Chipata
SMKIA	China, South Africa, Thailand,	Kitwe, Kalulushi, Chingiola, Chambeshi, Lusaka, Ndola, Chililabombwe, Luanshya,
Intercity	Tanzania, Zimbabwe, DRC, China, Thailand, France, Philippines, Hong Kong, Dubai, India, USA, UAE, UK, Japan, Australia, Malaysia, Turkey, Canada, Nepal,	Lusaka, Ndola, Kasama, Lower Zambezi, Kafue, Maamba, Shiwangandu, Livingstone, Kabwe, Chingola, Kitwe, Kasempa, Chilanga, Mufulira, Petauke, Solwezi, Luanshya, Kasempa, Chongwe, Chipata, Mazabuka, Mufulira, Ndola, Kapiri Mposhi, Luanshya, Sesheke, Kalulushi, Mpongwe, Lundazi, Mkushi,

2.4 HEALTH FACILITY PREPAREDNESS

- Two main isolation facilities have been designated at Levy Mwanawasa Hospital in Lusaka and Tubalange Mini Hospital in Chilanga
- Additional isolation facilities have been designated in other provinces (See Annex 2 for detailed list)
- Facilities have been provided with case definitions, SOPs, and other reporting tools
- The ZNPFI conducted a training on COVID-19 for clinical teams in Kabwe from 18th - 21st February 2020. A total of 30 people were trained in clinical case management and 37 staff trained from POEs.



Figure 4: COVID-19 training for clinical teams held recently in Kabwe

2.4 SURVEILLANCE

- Event based surveillance has been heightened and is tracking alerts received regarding COVID-19
- To date, eighteen (18) alerts have been received; of these, 16 of these were uneventful and two are still being followed up.
- All travellers coming from China are being followed up and monitored by the surveillance team.
- There has been no confirmed case of COVID-19 reported in the country.

2.5 HEALTH PROMOTION AND RISK COMMUNICATION

- The Ministry of Health, in collaboration with its partners, has developed IEC materials on COVID-19. Materials were translated into 7 local languages and pre-tested.
- Interactive risk communication and health promotion programmes have been broadcast on a number of radio and television stations including ZNBC, Prime TV, QTV, Radio Phoenix, Radio Christian Voice, Kwitu FM, Hot FM and Money FM.
- Additional programmes have been scheduled and will continue to run as part of preparedness efforts.
- Three hotlines (**0953-898941; 0964-638726; 0974-493553**) have been set up at the ZNPFI for the public to call for information regarding COVID-19.



Figure 5: Workshop for the development, translation and pretesting of IEC materials on COVID-19, 18th-24th February 2020

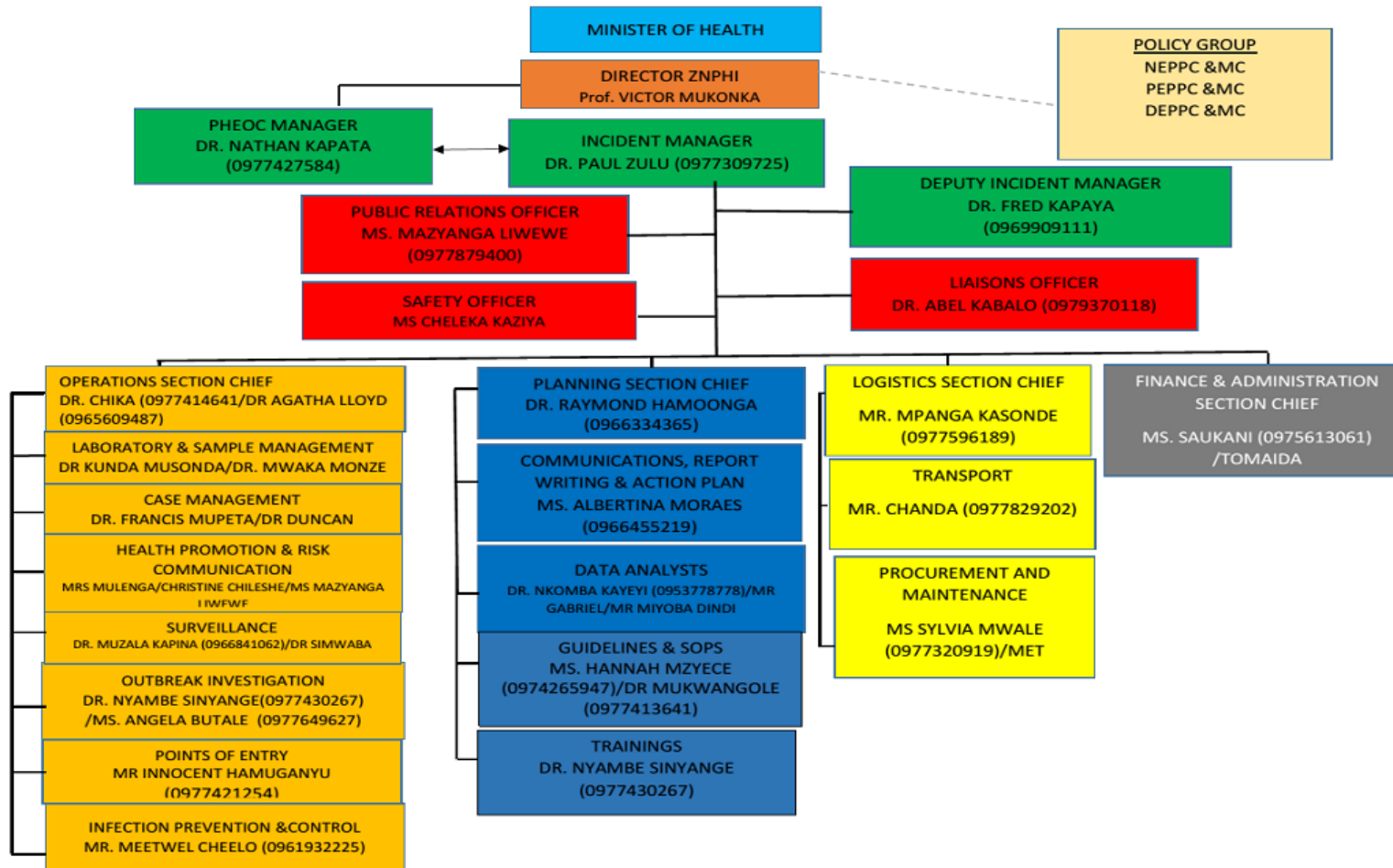
3. PRIORITY ACTIONS AND RECOMMENDATIONS

- Continued screening of travellers from affected regions; home quarantine and follow up for asymptomatic persons and isolation at designated facility for symptomatic persons.
- Printing and distribution of health promotion materials
- Detailed training of frontline health workers and POE staff on COVID-19 preparedness and response
- Procurement of PPE and medical supplies (including diagnostics and laboratory consumables) and equipping of designated isolation facilities

4. CONCLUSION

Zambia continues to maintain heightened surveillance efforts at all POE and preparedness efforts at health facilities. The Ministry will continue to coordinate efforts across sectors to ensure the health security of the Zambia population.

ANNEX 1: NATIONAL LEVEL INCIDENT MANAGEMENT SYSTEM FOR THE COVID-19 PREPAREDNESS RESPONSE



ANNEX 2: LIST OF DESIGNATED ISOLATION FACILITIES FOR THE COVID-19 PREPAREDNESS RESPONSE

PROVINCE	DISTRICT	ISOLATION FACILITY
Munchinga	Isoka	Lualizi and Kafwimbi RHC
Munchinga	Lavushimanda	Red Rhino school, Muwele Market .
Munchinga	Nakonde	Nakonde Hospital and Nakonde Urban Clinic.
Munchinga	Chama	FTC
Munchinga	Shiwang'andu	Lwanya RHC
Munchinga	Mpika	Chibansa RHC
Munchinga	Kanchibiya	Kopa Primary school ,LuchembeKanchibiya resettlement scheme,Chalabesa RHC.
Munchinga	Chinsali	Nambuluma RHC
Munchinga	Mafinga	Mulekatembo
Western	Senanga	Litambya RHC
Western	Shangombo	Shangombo Secondary School
Western		Shangombo RHC
Western	Kaoma	Kaoma Trades
Western		Kaoma Youth Resource Centre
Western	Luampa	Kahumbu Primary School
Western	Lukulu	Lukulu Old Hospital
Western	Mitete	Lukulu Old Hospital
Western	Kalabo	Wenela RHC

Western	Nalolo	Muoyo RHC
Western	Sioma	Old Nangwesh Refugee Camp
Western	Mulobezi	Mulobezi HAHC
Western	Mwandi	Situlu Health Post
Western	Sesheke	Mulimambango
Western	Sikongo	Sikongo RHC
Western	Limulunga	Nan'oko Health Post
Western	Mongu	Mongu D Hospital
Western		Mweeke HP
Western	Nkeyema	Nkeyema Zonal Health Centre
Central	Chitambo	Muchinka RHC
Central	Mkushi	Kasalamkanga RHC
Central	Serenje	Serenje Boma School
Central	luano	Old Mkushi Health Centre
Central	Kapiri	Tazara dry port
Central	Kabwe	Old Mukobeko clinic
Central	Chibombo	Twalumba RHC
Central	Chisamba	Malombe RHC
Central	Shibuyunji	Sichobo Rural Health Centre
Central	Mumbwa	Mumbwa Urban Clinic



Central	Itezhi tezhi	Itezhi tezhi Basic School/Uphill Scholl and and Itezhi Tezhi Boarding School
Central	Ngabwe	Iwonde primary school
Copperbelt	Chililabombwe	Council Hall
Copperbelt	Chingola	Kalilo Health Centre
Copperbelt	Kalulushi	Kalulushi Urban Health Centre
Copperbelt	Kitwe	Garnerton Clinic
Copperbelt	Luanshya	Chibolya Clinic
Copperbelt	Lufwanyama	Shimukunami Rural Health Centre
Copperbelt	Masaiti	Masaiti District Hospital
Copperbelt	Mpongwe	Bwembelelo Health Post
Copperbelt	Mufulira	Mutundu RHC
Copperbelt	Ndola	Itawa clinic (2019-nCoV), Main Masala clinic (Cholera)
Northern	Chilubi	Chaba RHC
Northern		Chilubi RHC
Northern	Kaputa	Kaputa RHC
Northern		Kalaba RHC
Northern		Kapepula HP

Northern	Kasama	Lukupu Rural Centre
Northern	Lunte	Chitoshi RHC
Northern		Mukupu Koama RHC
Northern		Mulenga Mapesa HP
Northern	Lupososhi	Chungu RHC
Northern		Nsombo RHC
Northern	Luwingu	Ipusikilo RHC
Northern	Mbala	Chulungoma Urban Clinic
Northern		Kaluluzi Health Post
Northern	Mporokoso	Township Clinic
Northern		Chiwala RHC
Northern	Mpulungu	Mpulungu Urban Clinic
Northern		Mpulungu Harbor Holding facility
Northern	Mungwi	Mungwi Baptist H. C
Northern		Kayambi RHC
Northern	Nsama	Nsumbu RHC
Northern	Senga	Mwiluzi Health Post
Northern		Sumbi Health Post