

Preparedness Situational Report No. 03

Disease Outbreak/Event: COVID-19

Preparedness Response start date: 30th January, 2020

Date of report: 10th March, 2020

Prepared by: MOH/ZNPHI

Country: Zambia

Correspondence: Prof. V. Mukonka (vmukonka@gmail.com)

- Background: On 31st December, 2019 China reported an outbreak of a novel coronavirus disease, now officially

1. CURRENT GLOBAL SITUATION UPDATE

first reported in Wuhan, Hubei Province. Symptoms of the illness include fever, cough, and breathing difficulty. In severe cases, COVID-19 leads to pneumonia, kidney failure and may result in death.

- The WHO declared the outbreak a Public Health Emergency of International Concern (PHEIC) on 30th January, 2020.

- As of 10th March 2020, 101 cases had been recorded in 10 African countries: 59 in Egypt, 20 in Algeria, 7 in South Africa, 4 in Senegal, 2 in Burkina Faso, 2 in Cameroon, 2 in Morocco, 2 in Nigeria, 2 in Tunisia and 1 in Togo.

Global Numbers as of 09/03/20

👤 109,577 confirmed (3993 new)

👤 3,809 deaths (225 new)

- **China**

👤 80,904 confirmed (45 new)

👤 3,123 deaths (23 new)

- **Outside China - 104 countries (3 New)**

👤 28,673 confirmed (3948 new)

👤 686 deaths (202 new)

**New: in last 24hrs*

Map of African countries with Confirmed and persons under investigation for COVID-19

10 March 2020 - 9:00 am EAT

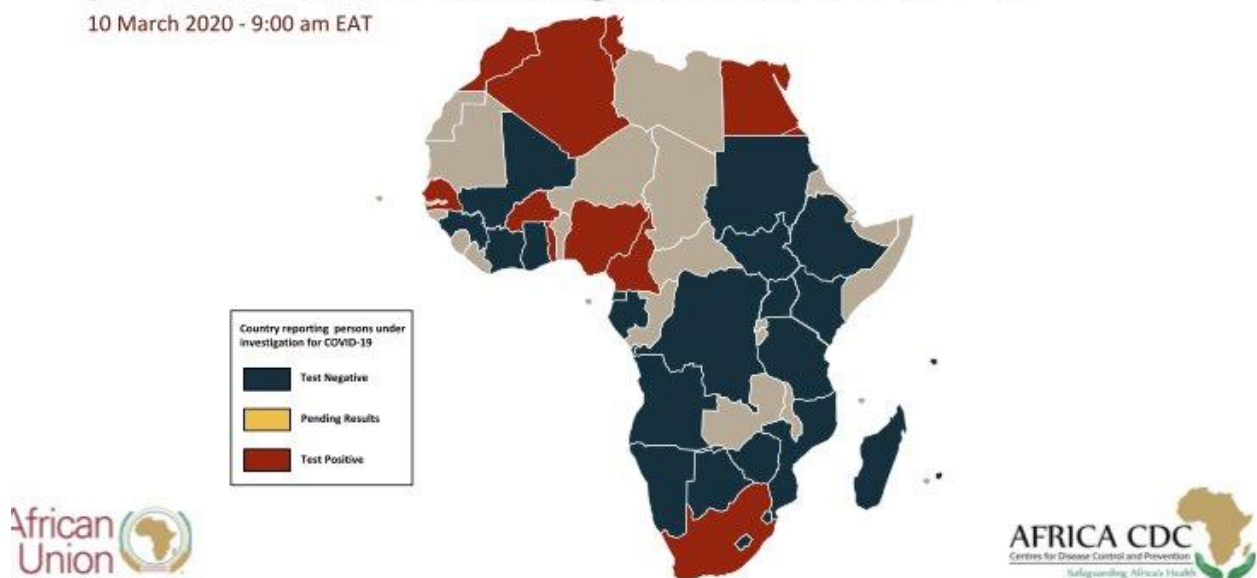


Figure 1: Map of African countries with persons under investigation for COVID-19 as of 10th March, 2020 (Source: Africa CDC)

2. ACTIONS TO DATE

2.1 CO-ORDINATION

- The Hon. Minister of Health, Dr. Chitalu Chilufya, in his address to parliament on Wednesday 4th March 2020, announced that K57,000,000 contingency emergency fund had been set up to strengthen the preparedness response and enhance public health security.
- An Incident Management Structure (IMS) was set up at the Zambia National Public Health Institute following the declaration of the outbreak as a PHEIC. The IMS meets twice weekly to receive updates on preparedness efforts around the country. (Refer to Annex 1 for IMS structure)
- Technical co-ordinating meetings are being held with cooperating partners and other stakeholders. The meetings are chaired by the Director, ZNPHI.
- A meeting of the National Epidemic Preparedness, Prevention Control and Management Committee (NEPPC&MC), chaired by the Hon. Minister of Health, Dr Chitalu Chilufya, was held on 4th February 2020 at the Taj Pamodzi Hotel in Lusaka. A second meeting has been scheduled for **Wednesday 11th March 2020.**
- A high level inter-ministerial coordinating meeting, chaired by the Secretary to the Cabinet, was held on 6th February, 2020. Meetings have been scheduled to be held fortnightly.
- Technical guidelines for health care workers and staff at points of entry have been developed as part of preparedness efforts.
- A multi-sectoral emergency contingency plan has been developed by the Ministry of Health with

2.2 SURVEILLANCE

support from the WHO.

- Event based surveillance has been heightened and is tracking alerts received related to COVID-19
- The COVID-19 status for Zambia is summarised in the table below:

Table 1: COVID-19 surveillance and monitoring report as of 10th March 2020

| Parameter | Number |
|--|--------|
| Total screened | 1225 |
| Risk persons under observations | 602 |
| Risk persons under observations complete 14 days | 369 |
| Number of alerts notified & verified as non-cases | 25 |
| Risk persons under investigation | 3 |
| Number of COVID-19 confirmed cases | 0 |

2.3 POINT OF ENTRY PREPAREDNESS

- Surveillance has also been heightened at designated points of entry. To date, 120 POE staff have received training on COVID-19.
- POE staff at the four international airports have been provided with PPE including gloves and face masks. The POEs have also been provided with case definitions and risk assessment forms.
- Active passenger screening for COVID-19 is being performed. Travellers from affected regions are being quarantined either at home or at the designated facility depending on whether or not they are symptomatic.

2.4 LABORATORY CAPACITY

- The University Teaching Hospital Virology Lab (UTHVL) (WHO-certified National Influenza Centre) is the designated primary diagnostic laboratory for COVID-19, with additional capacity at the School of Veterinary Medicine (SVM), UNZA.
- Two validated tests are currently being used, the Japanese and German tests. Both UTHVL and SVM have specific reagents (primers & probes) for PCR diagnosis of SARS-CoV-2 (the causative agent for COVID-19). These have been provided by the WHO and Hokkaido University respectively.
- Additional laboratory reagents are being mobilised with support from other partners including USCDC. New assays are expected to be validated in the coming week
- UTHVL participated in SARS-CoV-2 diagnosis training provided by Africa CDC and WHO.
- To date, all 25 samples tested have been negative for SARS-CoV-2
- Training on sample collection and packaging have been included in the workshop for clinicians



Figure 2: Demonstration of COVID-19 Sample collection during the training of clinicians held in Lusaka recently

2.5 HEALTH FACILITY PREPAREDNESS

- The ZNPFI conducted a training for clinical teams on COVID-19. A total of 120 clinicians from UTH, Levy Mwanawasa and Tubalange facilities as well as Lusaka sub-districts have been trained to date.
- Two main isolation facilities have been designated at Tubalange Mini Hospital in Chilanga and Levy Mwanawasa Hospital in Lusaka
- Additional isolation facilities have been designated in other provinces (See Annex 2 for detailed list)
- Facilities have been provided with case definitions, SOPs, and other reporting tools

2.6 HEALTH PROMOTION AND RISK COMMUNICATION

- Interactive risk communication and health promotion programmes have been broadcast on a number of radio and television stations including ZNBC, Prime TV, QTV, Radio Phoenix, Radio Christian Voice, Kwitu FM, Hot FM and Money FM.
- Additional programmes have been scheduled and will continue to run as part of preparedness efforts
- Three hotlines (0953-898941; 0964-638726; 0974-493553) have been set up at the ZNPFI for the public to call for information regarding COVID-19.
- The developed IEC materials are available at the following link: <http://znphi.co.zm/news/new-coronavirus-covid-19-travelers-guide-and-fact-sheet/>

3. GAPS AND CHALLENGES

- Language barriers during passenger screening
- Non-inclusion of private health facilities in trainings held for clinicians

4. PRIORITY ACTIONS AND RECOMMENDATIONS

- Limited logistical supplies (below monthly projections) due to increased global demand
- Continued screening of travellers at POEs.
- Printing and distribution of health promotion materials
- Broaden list of at risk countries for passenger screening and monitoring list in line with evolving global situation
- Detailed training of staff at private health facilities on COVID-19 preparedness and response
- Local manufacture of viral transport media

4. CONCLUSION

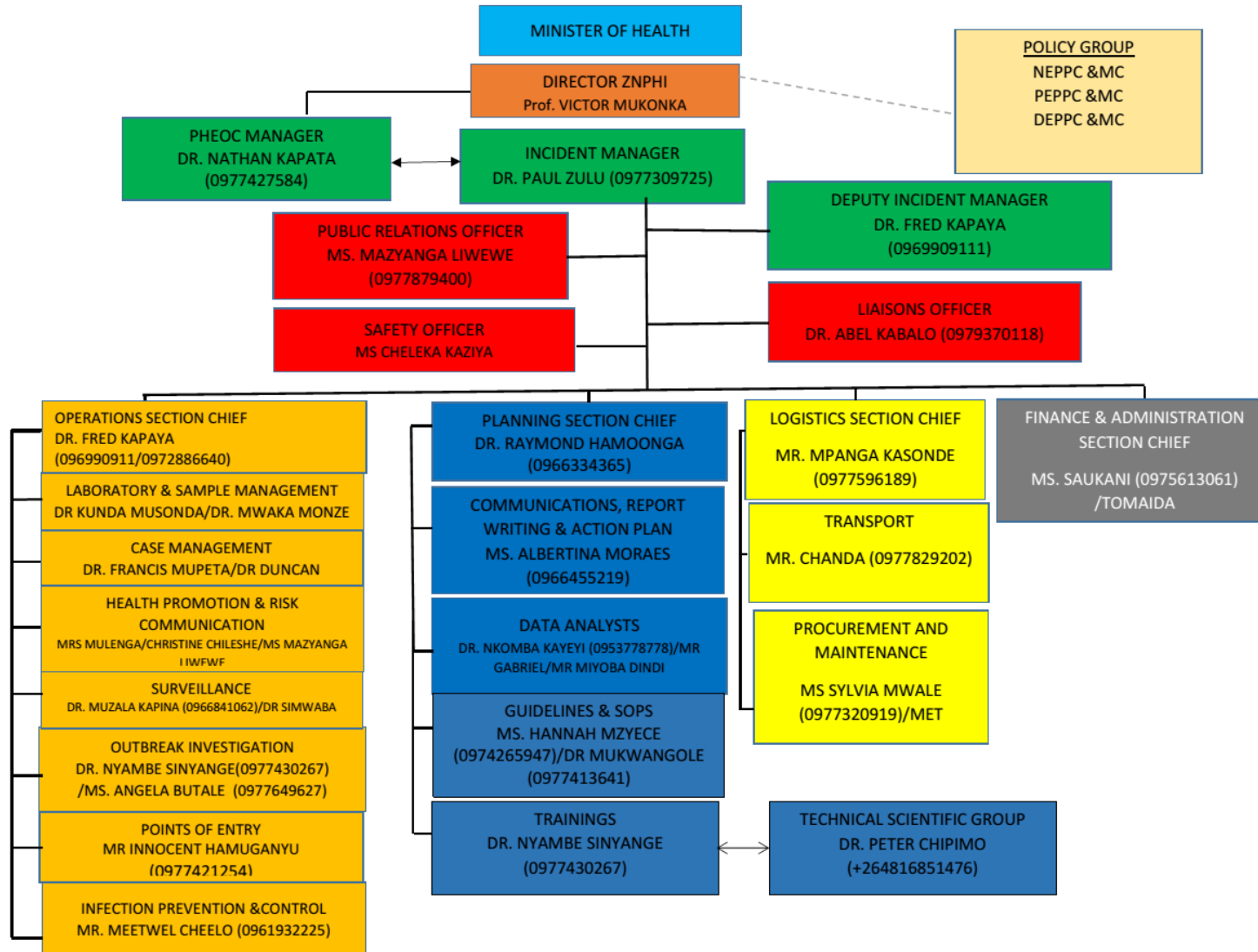


Ministry of Health



Zambia remains at risk of importation of COVID-19. We will maintain heightened surveillance efforts at all POE and preparedness efforts at health facilities. The Ministry will continue to coordinate efforts across sectors to ensure the health security of the Zambia population.

ANNEX 1: NATIONAL LEVEL INCIDENT MANAGEMENT SYSTEM FOR THE COVID-19 PREPAREDNESS RESPONSE



ANNEX 2: LIST OF DESIGNATED ISOLATION FACILITIES FOR THE COVID-19 PREPAREDNESS RESPONSE

| PROVINCE | DISTRICT | ISOLATION FACILITY |
|------------------|--------------|--|
| Munchinga | Isoka | Lualizi and Kafwimbi RHC |
| Munchinga | Lavushimanda | Red Rhino school, Muwele Market . |
| Munchinga | Nakonde | Nakonde Hospital and Nakonde Urban Clinic. |
| Munchinga | Chama | FTC |
| Munchinga | Shiwang'andu | Lwanya RHC |
| Munchinga | Mpika | Chibansa RHC |
| Munchinga | Kanchibiya | Kopa Primary school ,LuchembeKanchibiya resettlement scheme,Chalabesa RHC. |
| Munchinga | Chinsali | Nambuluma RHC |
| Munchinga | Mafinga | Mulekatembo |
| Western | Senanga | Litambya RHC |
| Western | Shangombo | Shangombo Secondary School |
| Western | | Shangombo RHC |
| Western | Kaoma | Kaoma Trades |
| Western | | Kaoma Youth Resource Centre |
| Western | Luampa | Kahumbu Primary School |
| Western | Lukulu | Lukulu Old Hospital |
| Western | Mitete | Lukulu Old Hospital |
| Western | Kalabo | Wenela RHC |

| | | |
|----------------|------------|-----------------------------|
| Western | Nalolo | Muoyo RHC |
| Western | Sioma | Old Nangwesh Refugee Camp |
| Western | Mulobezi | Mulobezi HAHC |
| Western | Mwandi | Situlu Health Post |
| Western | Sesheke | Mulimambango |
| Western | Sikongo | Sikongo RHC |
| Western | Limulunga | Nan'oko Health Post |
| Western | Mongu | Mongu D Hospital |
| Western | | Mweeke HP |
| Western | Nkeyema | Nkeyema Zonal Health Centre |
| Central | Chitambo | Muchinka RHC |
| Central | Mkushi | Kasalamkanga RHC |
| Central | Serenje | Serenje Boma School |
| Central | Iluano | Old Mkushi Health Centre |
| Central | Kapiri | Tazara dry port |
| Central | Kabwe | Old Mukobeko clinic |
| Central | Chibombo | Twalumba RHC |
| Central | Chisamba | Malombe RHC |
| Central | Shibuyunji | Sichobo Rural Health Centre |
| Central | Mumbwa | Mumbwa Urban Clinic |



| | | |
|-------------------|---------------------|---|
| Central | Itezhi tezhi | Itezhi tezhi Basic School/Uphill Scholl and and Itezhi Tezhi Boarding School |
| Central | Ngabwe | Iwonde primary school |
| Copperbelt | Chililabombwe | Council Hall |
| Copperbelt | Chingola | Kalilo Health Centre |
| Copperbelt | Kalulushi | Kalulushi Urban Health Centre |
| Copperbelt | Kitwe | Garnerton Clinic |
| Copperbelt | Luanshya | Chibolya Clinic |
| Copperbelt | Lufwanyama | Shimukunami Rural Health Centre |
| Copperbelt | Masaiti | Masaiti District Hospital |
| Copperbelt | Mpongwe | Bwembelelo Health Post |
| Copperbelt | Mufulira | Mutundu RHC |
| Copperbelt | Ndola | Itawa clinic, Main Masala clinic (Cholera) |
| Northern | Chilubi | Chaba RHC |
| Northern | | Chilubi RHC |
| Northern | Kaputa | Kaputa RHC |
| Northern | | Kalaba RHC |
| Northern | | Kapepula HP |

| | | |
|-----------------|-----------|----------------------------------|
| Northern | Kasama | Lukupu Rural Centre |
| Northern | Lunte | Chitoshi RHC |
| Northern | | Mukupu Koama RHC |
| Northern | | Mulenga Mapesa HP |
| Northern | Lupososhi | Chungu RHC |
| Northern | | Nsombo RHC |
| Northern | Luwingu | Ipusikilo RHC |
| Northern | Mbala | Chulungoma Urban Clinic |
| Northern | | Kaluluzi Health Post |
| Northern | Mporokoso | Township Clinic |
| Northern | | Chiwala RHC |
| Northern | Mpulungu | Mpulungu Urban Clinic |
| Northern | | Mpulungu Harbor Holding facility |
| Northern | Mungwi | Mungwi Baptist H. C |
| Northern | | Kayambi RHC |
| Northern | Nsama | Nsumbu RHC |
| Northern | Senga | Mwiluzi Health Post |
| Northern | | Sumbi Health Post |