

## ZAMBIA SITUATION REPORT NO. 106

**Disease Outbreak:** COVID-19  
**Report date:** Sunday 10<sup>th</sup> January 2021

**Response start date:** 30<sup>th</sup> January, 2020  
**Prepared by:** MOH/ZNPPI/WHO  
**Outbreak Declared:** 18<sup>th</sup> March, 2020  
**Correspondence:** [ims.covid@znphi.co.zm](mailto:ims.covid@znphi.co.zm)

### 1. SITUATION UPDATE

↑ **Cases this week (4<sup>th</sup> - 10<sup>th</sup> Jan): 6,146 (↑)**

#### 1.1 CURRENT CASE NUMBERS (as of 09:00 hours CAT)

- In the past epidemiological week, there were 6,146 new confirmed cases, 75 deaths and 1,515 recoveries. This represents a **251.60% increase** in the number of new cases recorded in the last 7 days, compared to the previous week (1,748 cases recorded).
- In the past 24 hrs, there were **1,161 new confirmed cases, 5 deaths and 86 recoveries**.
- Cumulative number of confirmed COVID-19 cases recorded to date is **27,728 with 469 deaths (CFR=1.69%) and 20,598 recoveries (74.29% recovered)**.
- Of the 469 total deaths among the confirmed cases, **164 have been classified as COVID-19 deaths (CFR=0.59%) and 291 as associated deaths; 14 BIDs are pending classification**. See Annex 1 for definitions
- There are currently **6,661 active cases**: of these, 191 are hospitalised (with 112 on Oxygen therapy and 9 in critical condition); 6,470 patients are under community management.

#### Global Numbers

(Source: JHU)

♂ **89,892,099 Confirmed**  
♀ **1,930,505 Deaths**  
♂ **49,873,068 Recoveries**

#### Africa Numbers

(Source: Africa CDC)

♂ **3,022,512 Confirmed**  
♀ **72,134 Deaths**  
♂ **2,451,591 Recoveries**

### 2. EPIDEMIOLOGICAL HIGHLIGHTS (By Epi-week)

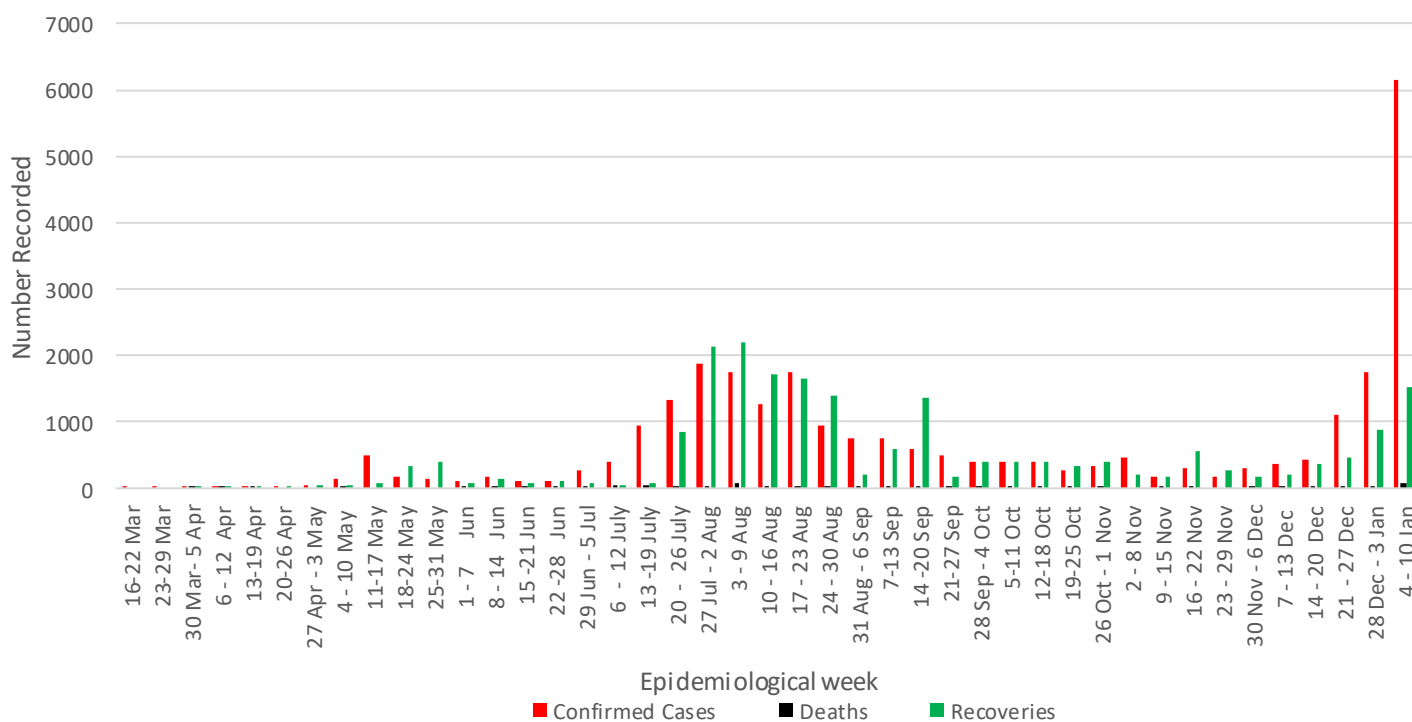


Figure 1: Weekly COVID-19 confirmed cases (N=27,728), deaths (N=469) and recoveries (N=20,598) as of 10<sup>th</sup> January 2021

**Zambia COVID-19 Statistics**  
10th January, 2021

Cumulative tests: 698,215 (11,700 New)  
Total confirmed cases: 27,728 (1,161 New)  
Total recoveries: 20,598 (86 New)  
Total deaths: 469 (5 New)  
[164 COVID-19 Deaths; 291 COVID-19 Associated;  
14 Pending Classification]  
Active cases: 6,661 [191 Hospitalised]

\* New - in the last 24hrs

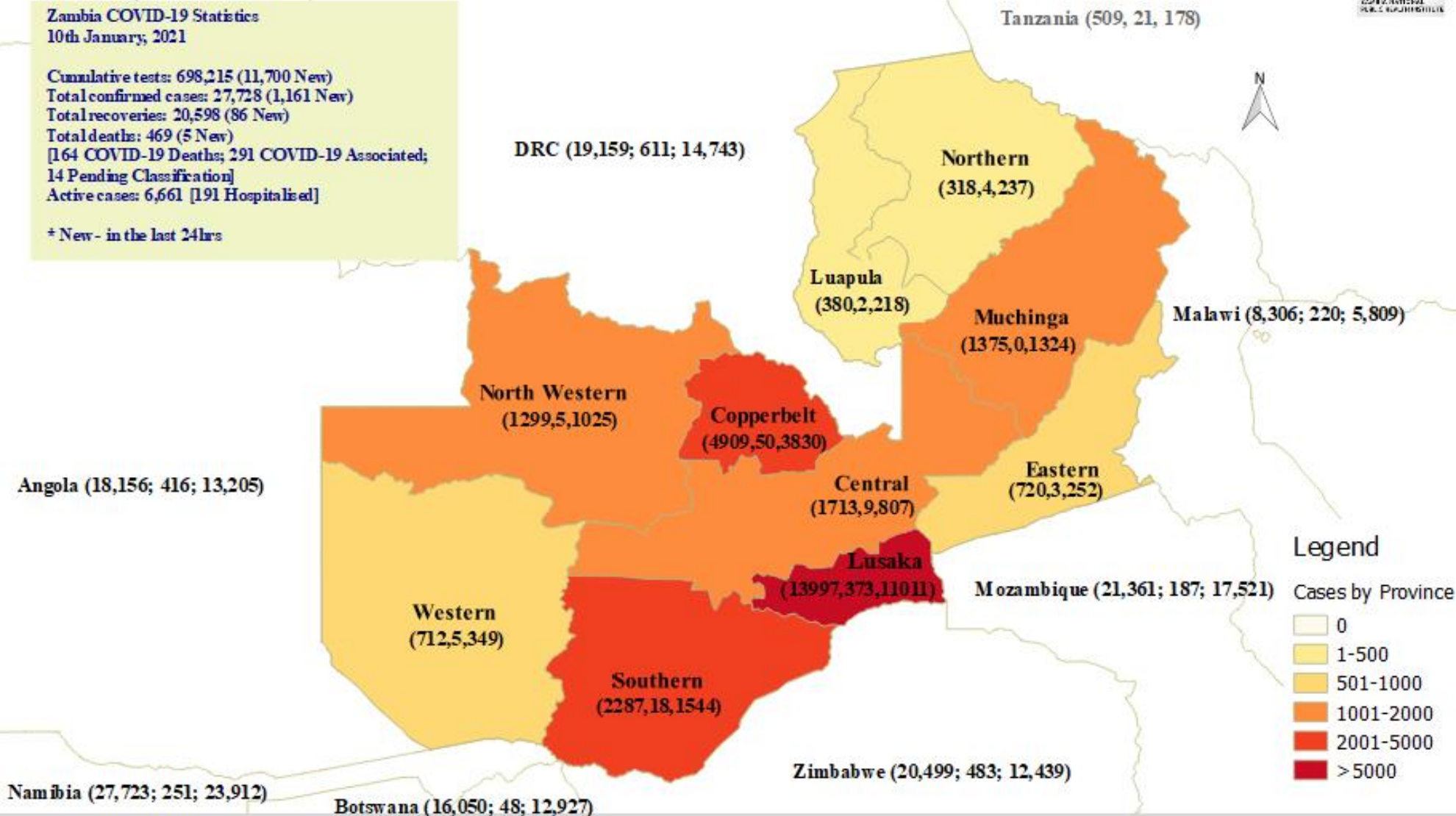


Figure 2: Map showing confirmed COVID-19 cases, deaths and recoveries (in brackets) by province and in neighbouring countries, as of 10<sup>th</sup> January 2021



ZAMBIA STATISTICS - 10/01/21  
27,728 Cumulative cases  
# of affected districts: 107 (\*2 new districts)

Confirmed Cases by District

Lusaka 13225	Serenje 64	Nkeyema 14
Ndola 2311	Mpongwe 62	Itezhi-tezhi 12
Kabwe 1160	Sinazongwe 61	Limulunga 12
Kitwe 1149	Kapiri Mposhi 57	Chembe 11
Livingstone 1088	Nchelenge 55	Mushindano 11
Nakonde 989	Masaiti 49	Mufumbwe 11
Sotwezi 846	Mkushi 47	Chifunabuli 10
Mongu 416	Nyimba 44	Mwense 10
Chingola 383	Mwinilunga 42	Lupososhi 10
Chipata 376	Petauke 41	Pemba 10
Chililabombwe 361	Seshele 38	Lunte 7
Choma 357	Zambezi 37	Itezhi-tezhi 6
Mufulira 278	Senanga 34	Chipangali 5
Chirundu 255	Luwingu 32	Mporokoso 5
Kalumbila 241	Siavonga 32	Luampa 5
Mansa 216	Kawambwa 31	Kasenengwa 4
Mpika 199	Senga Hill 31	Milenge 4
Kafue 190	Mantowe 29	Nsama 4
Mazabuka 166	Namwala 28	Mafinga 3
Chinsali 163	Chilubi 27	Manyinga 3
Kasama 161	Luano 26	Chasefu 2
Katete 148	Lukulu 26	Mbereshi 2
Chikankata 144	Lundazi 25	Chiengi 2
Chibombo 137	Mitete 25	Kanchibiya 2
Kalutshi 132	Samfya 24	Mwandi 2
Kazungula 123	Chadiza 22	Shangombo 2*
Chilanga 118	Luangwa 22	Lumezi 1
Luanshya 117	Mbala 22	Lusangazi 1
Mumbwa 116	Kalabo 22	Vubwi 1
Monze 102	Sinda 21	Kaputa 1
Rufunsa 99	Mungwi 21	Sikongo 1
Kaoma 95	Mulobezi 20*	
Chisamba 94	Isoka 19	
Kalomo 94	Kabompo 19	
Chongwe 88	Chavuma 16	
Zimba 68	Mwansabombwe 15	
Lufwanyama 67	Mpulungu 15	
Kasempa 67	Gwenbe 14	

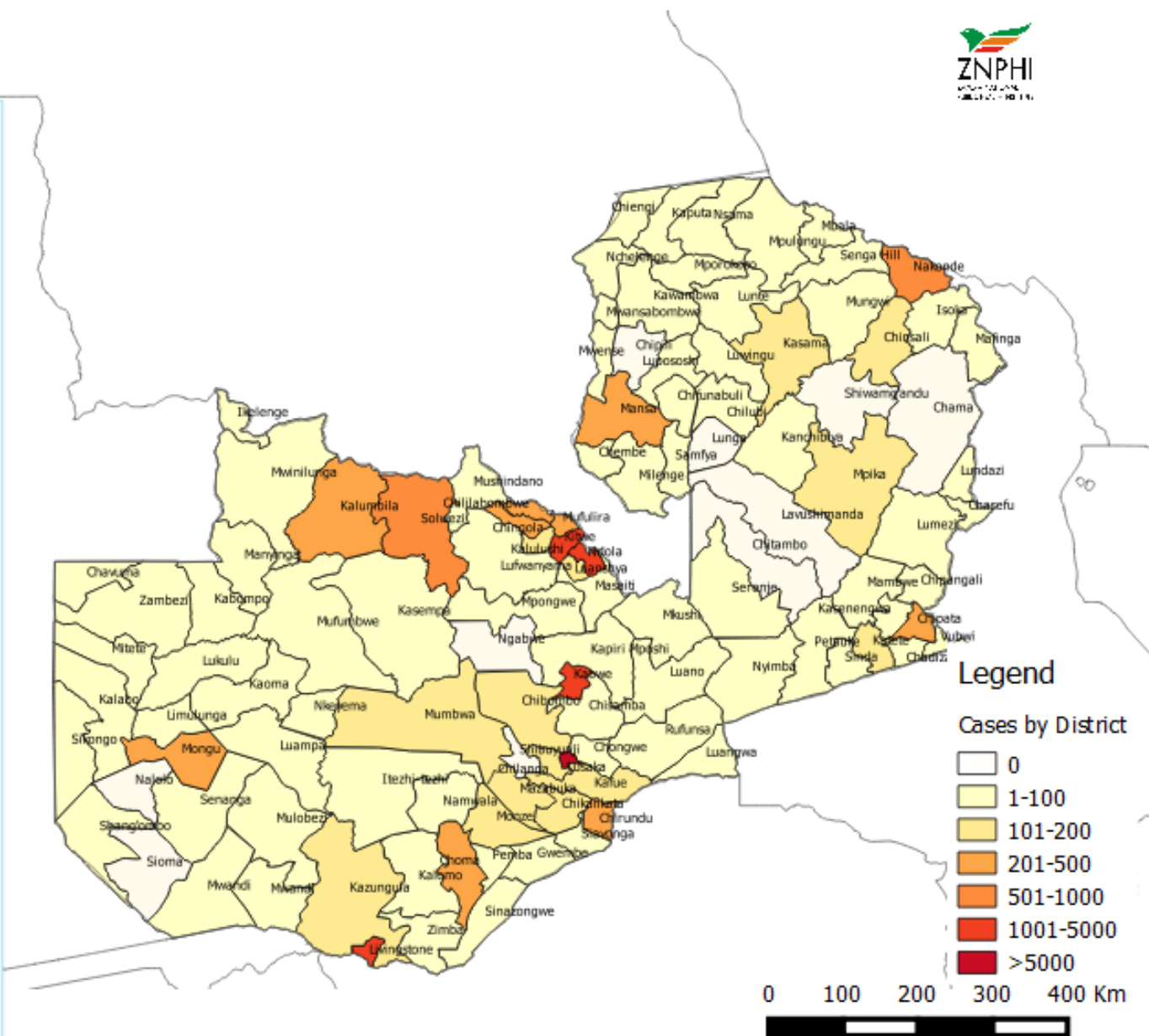


Figure 3: Map showing distribution of confirmed COVID-19 cases by district, as of 10<sup>th</sup> January 2021

- **Age distribution:** Below is a graph showing the age distribution of confirmed cases by month, between March and December 2020

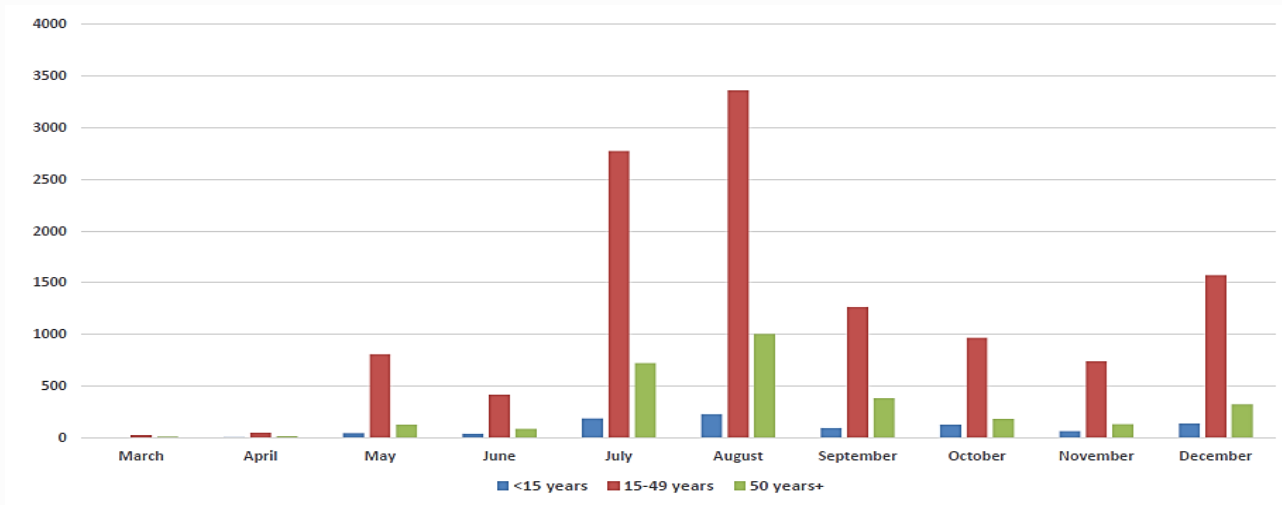


Figure 4: Age distribution of confirmed cases (March – December, 2020)

### 3. ACTIONS TO DATE

#### 3.1 CO-ORDINATION

- **Regional/Continental level:**

- Zambia hosts the Southern Africa Regional Collaborating Centre of the Africa CDC and has been coordinating the response at regional level. To date, **Southern Africa has recorded 1,369,221 confirmed cases of COVID-19 including 35,268 deaths and 1,072,201 recoveries.** Zambia continues to participate in AU meetings to ensure continued regional and continental trade and strategies to stop transmission of COVID-19.

- **National Level:**

- The government continues to enforce the measures and interventions to control the spread of COVID-19 countrywide as outlined in the Statutory instruments **SI21 and SI22 of 2020 on COVID-19 and presidential directives** issued in March 2020.
- A **COVID-19 contingency plan** outlining the country's COVID-19 preparedness and response activities was finalised and continues to be regularly updated as the outbreak evolves.

#### BACKGROUND

The WHO was alerted of an increase in the number of pneumonia cases of unknown cause detected in Wuhan City, Hubei Province, China. The disease now called Coronavirus Disease 2019 (COVID-19) is caused by a new coronavirus named SARS-CoV-2. The WHO declared the outbreak a PHEIC on 30<sup>th</sup> January and further declared COVID-19 a pandemic on 12<sup>th</sup> March. Zambia recorded its first two cases of COVID-19 on 18<sup>th</sup> March 2020. The first 28 cases in Zambia all had a history of travel to Europe or Asia. Three weeks into the outbreak, cases were noted among people without history of travel but in contact with confirmed cases. There has since been an increase in local person-person transmission with increasing geographic spread. Cases have been reported in all ten provinces, with Western province being the last to record cases of COVID-19.

- An eight pronged strategy has been implemented in response to the outbreak: **Surveillance and case finding; Case management; Infection prevention and control; Risk communication and community engagement; Laboratory diagnosis; Logistics and supply chain management; Appropriate competent and adequate workforce; and Routine essential health services**
- The public health safety measures that have been implemented in response to the outbreak include closure of schools and higher learning institutions; mandatory wearing of a mask while out in public; continued screening of travellers into Zambia; redirection of all international flights to land and depart from KKIA only; suspension of non-essential travel to countries with confirmed COVID-19 cases; restriction of public gatherings; restaurants to operate only on take away and delivery basis; and closure of all bars, nightclubs, cinemas, gyms and casinos. Travellers into Zambia must be isolated at designated government facilities, or alternatively at designated lodges and hotels at own cost, while awaiting test results. However, a number of measures have been eased over time. The details are provided below
- **Easing of public health and safety measures:** the following measures have been eased to date
  - **24<sup>th</sup> April, 2020:** Resumed congregation at places of worship, non-contact sports, and operation of saloons and barbershops subject to adherence to public health regulation, guidelines and certification
  - **8<sup>th</sup> May, 2020:** Restaurants, cinemas, gyms, and casinos reopened; hotels, lodges event management, tour operators and other business proprietors that closed voluntarily advised to consider reopening
  - **1<sup>st</sup> June 2020:** Primary and secondary schools reopened for examination classes only.
  - **8<sup>th</sup> June 2020:** Commenced phased reopening of colleges and universities for final year students only
  - **25<sup>th</sup> June 2020:** All international airports reopened
  - **11<sup>th</sup> September 2020:** Reopening of all non-examination classes in universities, colleges and schools announced during the Presidential state of the nation address. Schools were scheduled to reopen between the 14<sup>th</sup> and 28<sup>th</sup> September 2020 subject to adherence to public health certification, guidelines, regulations and measures. The **partial reopening of bars, taverns and nightclubs** with immediate effect was also announced; the establishments will be allowed to operate subject to adherence to public health certification, guidelines, regulations and measures, and will **only operate between the hours of 6pm to 11pm from Fridays to Sundays.**
- **Technical level:** The ZNPHI continues to provide leadership and partner collaboration on the response through the Public Health Emergency Operation Centre (PHEOC).
  - Technical co-ordinating meetings are being held with cooperating partners and other stakeholders. The meetings are chaired by the Director, ZNPHI
  - The Incident Management System (IMS) continues to meet at ZNPHI (with a Zoom link provided to ensure social distancing) on Tuesdays and Thursdays. The IMS structure is available at **Annex 2**

### 3.3 SURVEILLANCE

#### ➤ Newly reported COVID-19 cases

Table 1: Breakdown of confirmed COVID-19 cases reported on 10<sup>th</sup> January 2021

DATE	REPORTS	NUMBERS BY LOCATION
10 <sup>th</sup> January, 2021	Cases	365 Lusaka, 143 Kabwe, 140 Ndola, 74 Rufunsa, 52 Chipata, 49 Kitwe, 40 Katete, 40 Livingstone, 20 Mulobezi, 18 Serenje, 17 Mansa, 16 Kapiri – Mposhi, 14 Mongu, 13 Samfya, 11 Petauke, 9 Chikankata, 9 Kasama, 9 Sinda, 8 Chembe, 8 Chibombo, 8 Chilubi, 8 Kalomo, 8 Mwense, 7 Chadiza, 7 Isoka, 7 Sesheke, 7 Solwezi, 5 Kawambwa, 5 Mufulira, 5 Zimba, 4 Kabompo, 4 Kalabo, 4 Nyimba, 4 Senanga, 3 Limulunga, 3 Mambwe, 2 Kalulushi, 2 Luampa, 2 Lundazi, 2 Mpongwe, 2 Mushindano, 2 Shangombo, 2 Sinazongwe, 1 Chisamba, 1 Mbaka, 1 Mwandi
	Deaths	2 Lusaka (facility), 1 Livingstone (facility), 1 Mongu (facility), 1 Solwezi (facility)
	Recoveries	52 Southern, 13 Lusaka, 6 Eastern, 6 Luapula, 5 Western, 3 North-western, 1 Northern
<b>TOTAL</b>	<b>1,161 New confirmed cases; 5 deaths; 86 recoveries</b>	

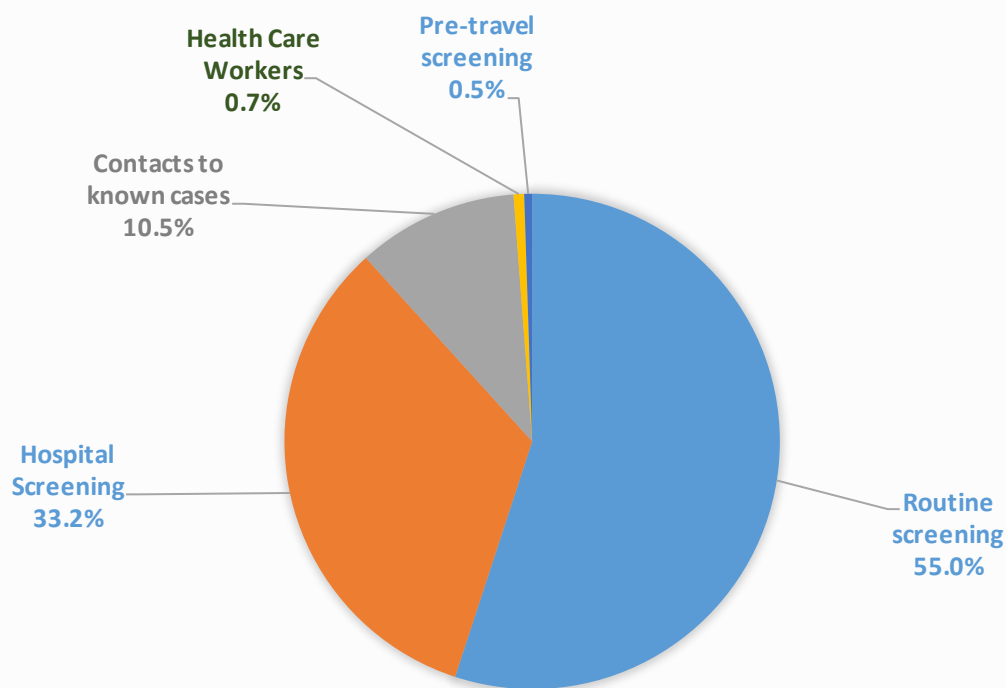


Figure 5: Categorisation of confirmed cases reported 10<sup>th</sup> January 2021

### 3.4 CASE MANAGEMENT

- There are currently 191 COVID-19 patients hospitalised in facilities around the country; of these, 112 are on Oxygen therapy and 9 are in critical condition
- Five facility deaths were recorded in the last 24hrs

Table 3: National distribution of hospitalised COVID-19 patients by province – 10<sup>th</sup> January 2021

PROVINCE	FACILITY	TOTAL # OF PATIENTS	# OF PATIENTS ON OXYGEN	# OF CRITICAL PATIENTS	DEATHS
Central	Kabwe General Hospital	5	3	0	0
Copperbelt	Ndola Teaching Hospital	2	2	0	0
	Kitwe Teaching Hospital	5	1	0	0
Eastern	Chipata General Hospital	9	5	1	0
Luapula	Mansa General Hospital	4	2	0	0
	Milenge	1	0	0	0
Lusaka	Levy Mwanawasa	82	62	8	2
	UTH	35	20	0	0
	Kafue	1	0	0	0
	Rufunsa	1	0	0	0
	Chirundu	4	0	0	0
	Chongwe	1	1	0	0
Muchinga	Chinsali General Hospital	0	0	0	0
Northern	Mbala	9	1	0	0
North-western	Kalumbila	7	1	0	0
	Solwezi	1	0	0	1
Southern	Livingstone Hospital	10	5	0	1
	Choma	5	5	0	0
	Chikankata	1	0	0	0
	Monze	1	1	0	0
Western	Mongu	6	2	0	1
	Kaoma	1	1	0	0
<b>TOTAL</b>		<b>191</b>	<b>112</b>	<b>9</b>	<b>5</b>

- Below is the community management model and admission/discharge criteria for persons who test positive for COVID-19:

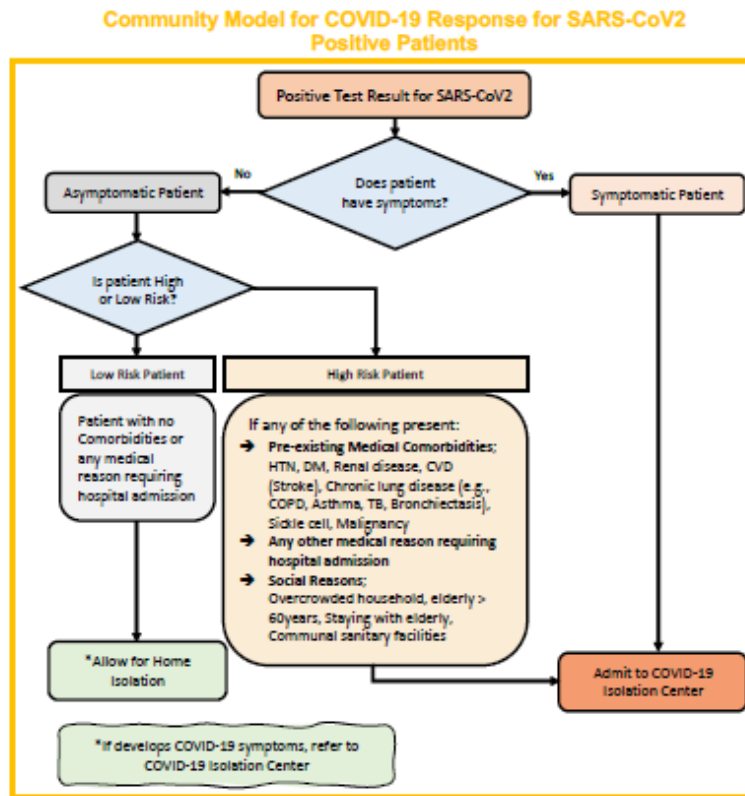


Figure 7: Community management model for COVID-19 patients

SETTING	Hospital/Facility Care	Patients with Medical Conditions requiring continued Care beyond COVID-19 Recovery	Home Care
ADMISSION	<ul style="list-style-type: none"> <li>→ Any symptoms for COVID-19</li> <li>→ Asymptomatic High-Risk patients</li> <li>→ Presence of other Medical conditions</li> <li>→ Where Home Isolation is not feasible</li> </ul>	<ul style="list-style-type: none"> <li>→ As medically indicated</li> </ul>	<ul style="list-style-type: none"> <li>→ Asymptomatic</li> <li>→ No comorbidity</li> <li>→ If home Isolation feasible</li> </ul>
DISCHARGE / DEISOLATION	<ul style="list-style-type: none"> <li>→ Asymptomatic for at least 3 days plus 1 negative PCR at day 7 or beyond AND</li> <li>→ 14 days since first Positive PCR</li> </ul>	<ul style="list-style-type: none"> <li>→ Two negative PCR Tests at least 24 hours apart</li> </ul>	<ul style="list-style-type: none"> <li>→ 1 negative PCR at day 7 or beyond AND</li> <li>→ 14 days since first Positive PCR</li> </ul>

Figure 8: Admission and Discharge criteria for COVID-19 patients



### 3.5 LABORATORY AND SAMPLE MANAGEMENT

- The currently **designated laboratories** for COVID-19 diagnostics are listed below (Table 2). A sample referral system is in place for samples being collected in other provinces.
- Zambia is utilising real-time Reverse Transcriptase Polymerase Chain Reaction (RT-PCR), Gene Xpert, Hologic Panther, RDT, and Roche Cobas 6800 testing platforms for COVID-19 diagnosis. Testing facilities are available in all 10 provinces.

Table 2: National Laboratory Diagnostic Capacity for COVID-19 by province

PROVINCE	INSTITUTION	TESTING PLATFORM(S)
<b>Central</b>	Kabwe General Hospital	Gene Xpert
	TDRC, Ndola	RT-PCR
<b>Copperbelt</b>	Arthur Davison Children's Hospital	Cobas 6800
<b>Eastern</b>	Chipata General Hospital	Gene Xpert
<b>Luapula</b>	Mansa General Hospital	Gene Xpert
	ZNS Luamfumu	Gene Xpert
<b>Lusaka</b>	UTH, Levy (Virology, ACOE, PCOE), Lusaka	RT-PCR; Gene Xpert; Cobas 6800; Panther;
	UNZA – SVM, Lusaka	RT-PCR
	CIDRZ, Lusaka	RT-PCR
	CHAZ, Lusaka	RT PCR
	Lancet	RT PCR
	Mtendere Mission Hospital, Chirundu	Gene Xpert
	MedLand Hospital, Lusaka	RT PCR
	Victoria Hospital	RT PCR
	Zambia Air Force Hospital, Lusaka	Gene Xpert
	ZNPHRL, Lusaka	RT PCR
<b>Muchinga</b>	Chinsali General Hospital	Gene Xpert & PCR
<b>Northern</b>	Kasama General Hospital	Gene Xpert
	Solwezi General Hospital, Solwezi	Panther
<b>North-western</b>	Kansanshi Mine Hospital (Mary Begg), Solwezi	Gene Xpert
	Macha Research Trust	RT-PCR
<b>Southern</b>	Livingstone Teaching Hospital	Gene Xpert
<b>Western</b>	Lewanika General Hospital	Gene Xpert

- In the past week (28<sup>th</sup> December to 3<sup>rd</sup> January), **60,242 tests** were conducted (compared to **38,928 tests** the previous week), out of which **2.90%** tested positive for SARS-CoV-2 (compared to 2.87% the previous week).
- In the week under review (4<sup>th</sup> January to 10<sup>th</sup> January): **74,169 tests** have been conducted, out of which **8.29%** have tested positive for SARS-CoV-2.
- In the last 24hrs, **11,700 tests** were conducted, out of which **1,161** samples tested positive for SARS-CoV-2 (9.92% positive).
- To date, a total of **698,215 tests** have been conducted, with a cumulative **27,728 confirmed positive (3.97% positivity rate)** for SARS-CoV-2. The testing coverage is **41,071 per 1,000,000 population**

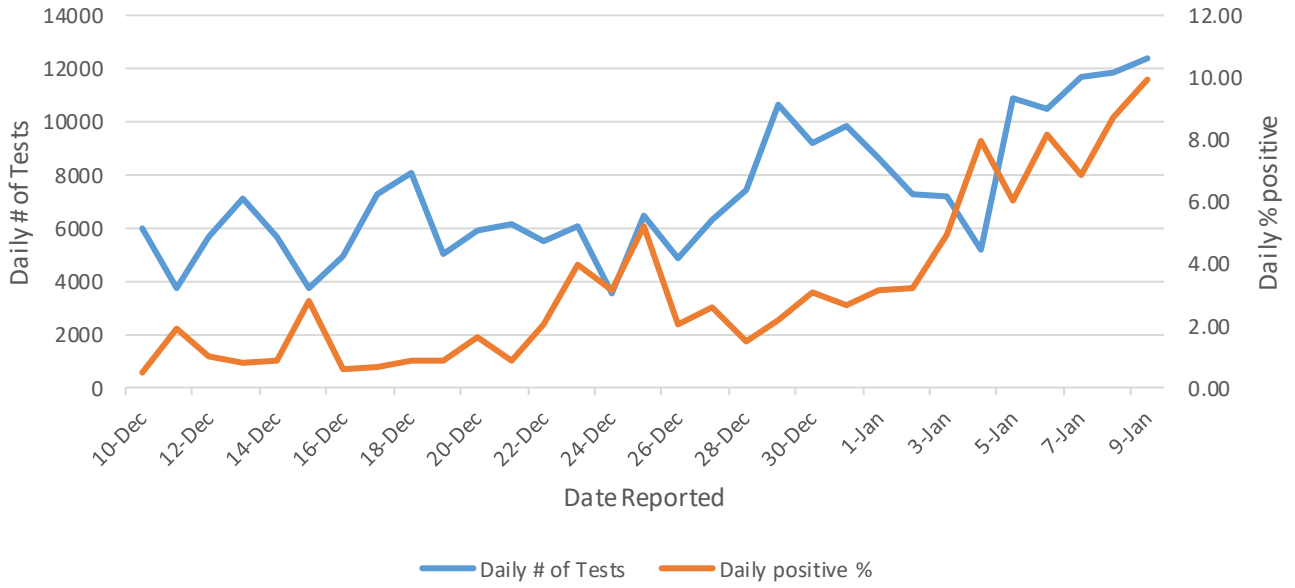


Figure 6: Daily number of tests vs % of positive results recorded (8 December 2020 to 10<sup>th</sup> January, 2021)

## ANNEX 1: CORONAVIRUS DISEASE 2019 (COVID-19) CASE DEFINITIONS

### **1. Suspect case:**

A. Patient with acute respiratory infection (fever and at least one sign/symptom of respiratory disease e.g. cough, shortness of breath), AND with no other aetiology that fully explains the clinical presentation AND a history of travel to or residence in a country/area or territory reporting local transmission of COVID-19 during the 14 days prior to symptom onset,

**OR**

B. Patient with any acute respiratory illness AND having been in contact with a confirmed or probable COVID-19 case in the last 14 days prior to symptom onset,

**OR**

C. Patient with severe acute respiratory infection (fever and at least one sign/symptom of respiratory disease e.g. cough, shortness of breath), AND requiring hospitalization AND with no other aetiology that fully explains the clinical presentation

**2. Probable case:** A suspect case for whom testing for COVID-19 is inconclusive or is tested positive using a pan-coronavirus assay and without laboratory evidence of other respiratory pathogens.

**3. Confirmed case:** A person with laboratory confirmation of COVID-19 infection, irrespective of clinical signs and symptoms.

**4. COVID-19 Death:** COVID-19 death is defined for surveillance purposes as a death resulting from a clinically compatible illness in a probable or confirmed COVID-19 case, unless there is a clear alternative cause of death that cannot be related to COVID disease (e.g. trauma). There should be no period of complete recovery between the illness and death.

**5. COVID-19 Associated Death:** a death of an individual in whom COVID-19 has been detected but it is not the primary cause of death

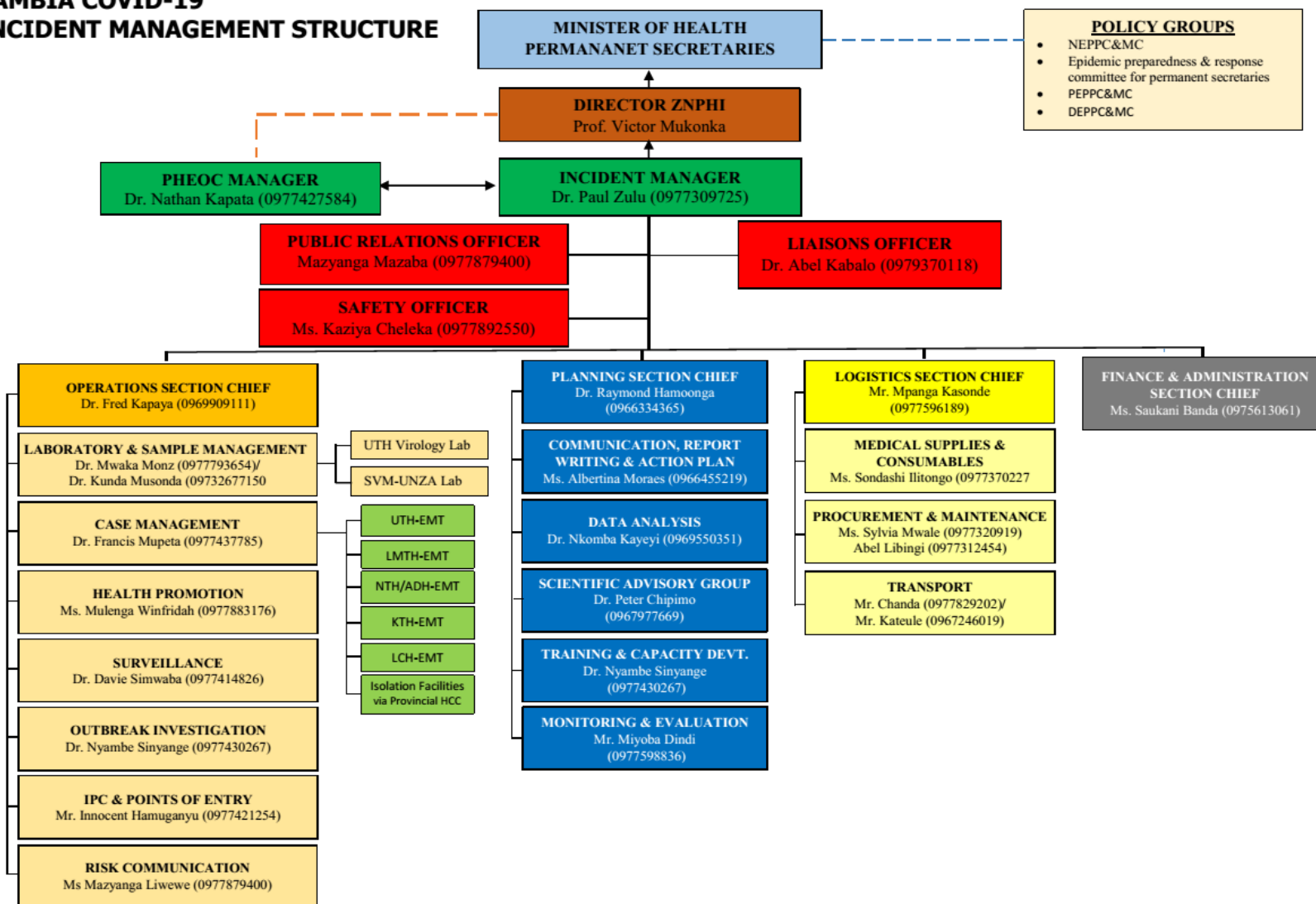
**6. COVID-19 Unclassified Death:** a death of an individual in whom COVID-19 has been detected but the cause of death is yet to be classified as either a COVID-19 death or associated death following expert review

**7. Contact:** a person who experienced any one of the following exposures during the 2 days before and the 14 days after the onset of symptoms of a probable or confirmed case: a. Face-to-face contact with a probable or confirmed case within 1 meter and for more than 15 minutes; b. Direct physical contact with a probable or confirmed case; c. Direct care for a patient with probable or confirmed COVID-19 disease without using proper personal protective equipment; OR d. Other situations as indicated by local risk assessments.

## ANNEX 2: NATIONAL LEVEL INCIDENT MANAGEMENT SYSTEM FOR THE COVID-19 PREPAREDNESS RESPONSE

### ZAMBIA COVID-19

### INCIDENT MANAGEMENT STRUCTURE



**POLICY GROUPS**

- NEPPC&MC
- Epidemic preparedness & response committee for permanent secretaries
- PEPPC&MC
- DEPPC&MC

### ANNEX 3: LIST OF DESIGNATED ISOLATION FACILITIES FOR THE COVID-19 OUTBREAK RESPONSE

PROVINCE	DISTRICT	ISOLATION FACILITY
<b>Eastern</b>	Chipata	Walera HP and Chipata District Hospital
	Chadiza	Sadzu RHC and Chilenga HP
	Lundazi	Lundazi New Hospital Male Ward
	Mambwe	Agriculture Field Training Centre and ADRA shade in Nsefu
	Petauke	Zuze Health Post
	Katete	Katete Livestock Market
	Nyimba	Chininkhu Health Post
	Sinda	Ukasimbe Health Post and Chinzule HP
	Vubwi	Chigwe Health Post
	Kasenengwa	Kanzutu Health Post
	Lumezi	Lumezi Hospital, Mwasemphangwe Zonal and Mwanya RHC
	Chasefu	Kanyanga Mission Hospital
	Chipangali	Mkanda RHC and Chinunda RHC
	Lusangazi	Ukwimi Trades
<b>Southern</b>	Livingstone	Mosi Oa Tunya Health centre
	Zimba	Zimba Basic school
	Siavonga	Kabbila Health Post
	Pemba	Pemba Main Clinic
	Kalomo	Mawaya Clinic
	Monze	Mulumbwa Health Post
	Mazabuka	Research clinic
	Chikankata	Nansenga Rural Health centre
	Namwala	Nchole Health Post
	Choma	Njase Clinic
	Gweembe	Munyumbwe HAHC
	Kazungula	Kazungula hospital admin block
	Sinazongwe	Sinazongwe rural health centre
<b>Lusaka</b>	Chilanga	Tubalange Mini Hospital, Mount Makulu Health Post

	Chirundu	Lumbembe Clinic
	Kafue	Shikoswe Clinic
	Luangwa	Kavalamanja RHC, Chitpoe RHC, Kasinsa RHC, Mandombe RHC
	Lusaka	Levy Mwanawasa, UTH, Tubalange Mini Hospital, Chawama SD, Matero SD, Chilenje SD, Kanyama SD, Chipata SD, Victoria Hospital, Bauleni
	Rufunsa	Rufunsa RHC, Chinyunyu RHC
<b>Muchinga</b>	Isoka	Lualizi and Kafwimbi RHC
	Lavushimanda	Red Rhino school, Muwele Market .
	Nakonde	Nakonde Hospital and Nakonde Urban Clinic.
	Chama	FTC
	Shiwang'andu	Lwanya RHC
	Mpika	Chibansa RHC
	Kanchibiya	Kopa Primary school, LuchembeKanchibiya resettlement scheme, Chalabesa RHC.
	Chinsali	Nambuluma RHC
	Mafinga	Mulekatembo
	<b>Western</b>	Senanga
Shangombo		Shangombo Secondary School
		Shangombo RHC
Kaoma		Kaoma Trades
		Kaoma Youth Resource Centre
Luampa		Kahumbu Primary School
Lukulu		Lukulu Old Hospital

	Mitete	Lukulu Old Hospital
	Kalabo	Wenela RHC
	Nalolo	Muoyo RHC
	Sioma	Old Nangwesh Refugee Camp
	Mulobezi	Mulobezi HAHC
	Mwandi	Situlu Health Post
	Sesheke	Mulimambango
	Sikongo	Sikongo RHC
	Limulunga	Nan'oko Health Post
	Mongu	Mongu D Hospital, Mweeke HP
	Nkeyema	Nkeyema Zonal Health Centre
<b>Central</b>	Chitambo	Muchinka RHC
	Mkushi	Kasalamkanga RHC
	Serenje	Serenje Boma School
	Iuano	Old Mkushi Health Centre
	Kapiri	Tazara dry port
	Kabwe	Old Mukobeko clinic
	Chibombo	Twalumba RHC
	Chisamba	Malombe RHC
	Shibuyunji	Sichobo Rural Health Centre
	Mumbwa	Mumbwa Urban Clinic
	Itezhi tezhi	Itezhi tezhi Basic School/Uphill Scholl and and Itezhi Tezhi Boarding School
	Ngabwe	Iwonde primary school

<b>Copperbelt</b>	Chililabombwe	Council Hall	
	Chingola	Kalilo Health Centre	
	Kalulushi	Kalulushi Urban Health Centre	
	Kitwe	Gamerton Clinic	
	Luanshya	Chibolya Clinic	
	Lufwanyama	Shimukunami Rural Health Centre	
	Masaiti	Masaiti District Hospital	
	Mpongwe	Bwembelelo Health Post	
	Mufulira	Mutundu RHC	
	Ndola	Itawa clinic	
	<b>Northern</b>	Chilubi	Chaba RHC Chilubi RHC
		Kaputa	Kaputa RHC Kalaba RHC Kapepula HP
Kasama		Lukupura Rural Centre	
Lunte		Chitoshi RHC Mukupa Koama RHC Mulenga Mapesa HP	
Lupososhi		Chungu RHC Nsombo RHC	
Luwingu		Ipusikilo RHC	
Mbala		Chulungoma Urban Clinic Kaluluzi Health Post	
Mporokoso		Township Clinic Chiwala RHC	
Mpulungu		Mpulungu Urban Clinic	
Mungwi		Mungwi Baptist HC, Kayambi RHC	
Nsama		NsumbuRHC	
Senga		Nsumbu RHC, Mwiluzi HP, Sumbi HP	

