

SITUATION REPORT NO. 11




Disease Outbreak: COVID-19
Date of report: 29th March, 2020
Country: Zambia

Response start date: 30th January, 2020
Prepared by: MOH/ZNPPI/WHO
Correspondence: ims.covid@znphi.co.zm

1. CURRENT SITUATION UPDATE

- **Country Highlights:** As of 11hrs on 29th March 2020, there was **one (1) new confirmed case** recorded in the past 24 hours. The total number of confirmed cases is **twenty-nine (29)**. **There have been zero (0) deaths recorded** (Refer to Annex 1)
 - **Levy Mwanawasa Hospital:** There are currently **29** patients admitted at Levy Mwanawasa Hospital in Lusaka: 27 confirmed positive and 2 suspected cases (with results pending)
 - **Masaiti District Hospital (Copperbelt):** There are currently two (2) confirmed positive cases. No new cases were recorded.

Zambia Current Numbers

 **29 Confirmed (1 new)**
 **0 Deaths (0 new)**
 **0 Recoveries (0 new)**

Global Numbers

(Source: WHO)

 **634,835 confirmed (63,159 new)**
 **29,957 deaths (3,464 new)**

**New: in the last 24hrs*

Table 1: COVID-19 Cumulative surveillance and case management report as of 29th March 2020

Parameter	Number
Number of high risk persons under observation	3,142
Number of high risk persons that have completed 14 days observation	757
Number of alerts notified & verified as non-cases	171
Number of suspected cases reported today	64
Total Number of Samples Received	475
Total Number of Results Processed	400
Total Number of Confirmed COVID-19 Positive Cases	29

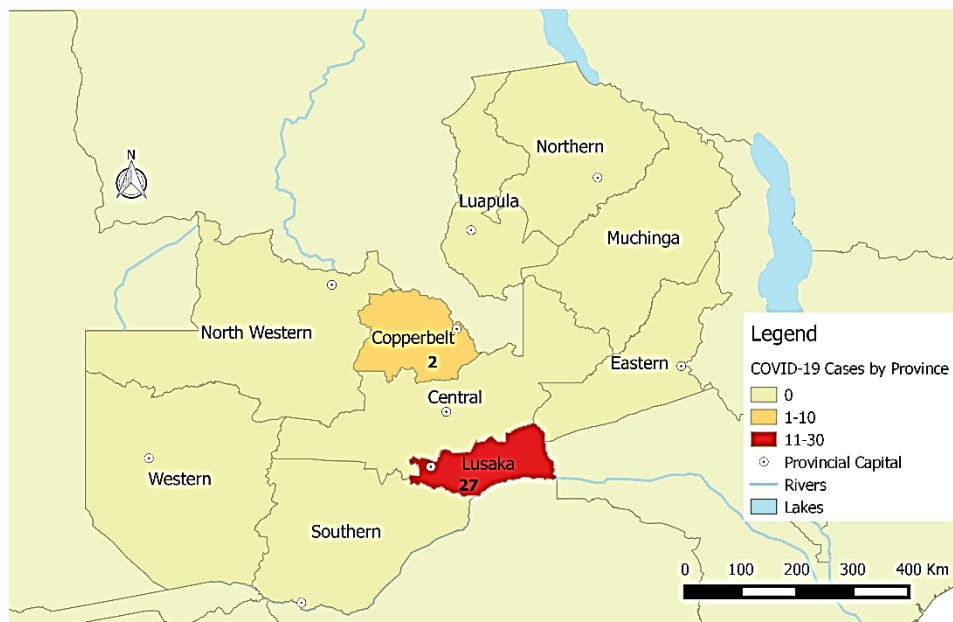


Figure 1: Map of Zambia showing confirmed COVID-19 cases by province as of 29th March 2020

2. ACTIONS TO DATE

2.1 CO-ORDINATION

- **Policy Level:** Government measures and interventions to control the spread of COVID-19 came into effect at midnight on Thursday 26th March, 2020 in line with the Public Health Act, statutory instruments **SI21** and **SI22**, and the presidential directives.
 - Daily press briefings held at 11:30 on the evolving outbreak situation in Zambia.
 - Meetings of the Committee of Ministers, Committee of Permanent Secretaries, and the National Epidemic Preparedness, Prevention Control and Management Committee (NEPPC&MC) have been convened since the declaration of the outbreak
- **Technical level:**
 - The IMS continues to meet on Tuesdays and Thursdays. (Refer to Annex 2 for the IMS structure)
 - Technical co-ordinating meetings are being held with cooperating partners and other stakeholders. The meetings are chaired by the Director, ZNPPI

2.2 SURVEILLANCE

- **Surveillance** (including Event Based Surveillance) is being actively conducted at POEs, health facilities, and sentinel sites
 - Screening facilities have been set up at POEs; additionally, screening is being done at the dry port in Makeni for all buses coming in from outside the country

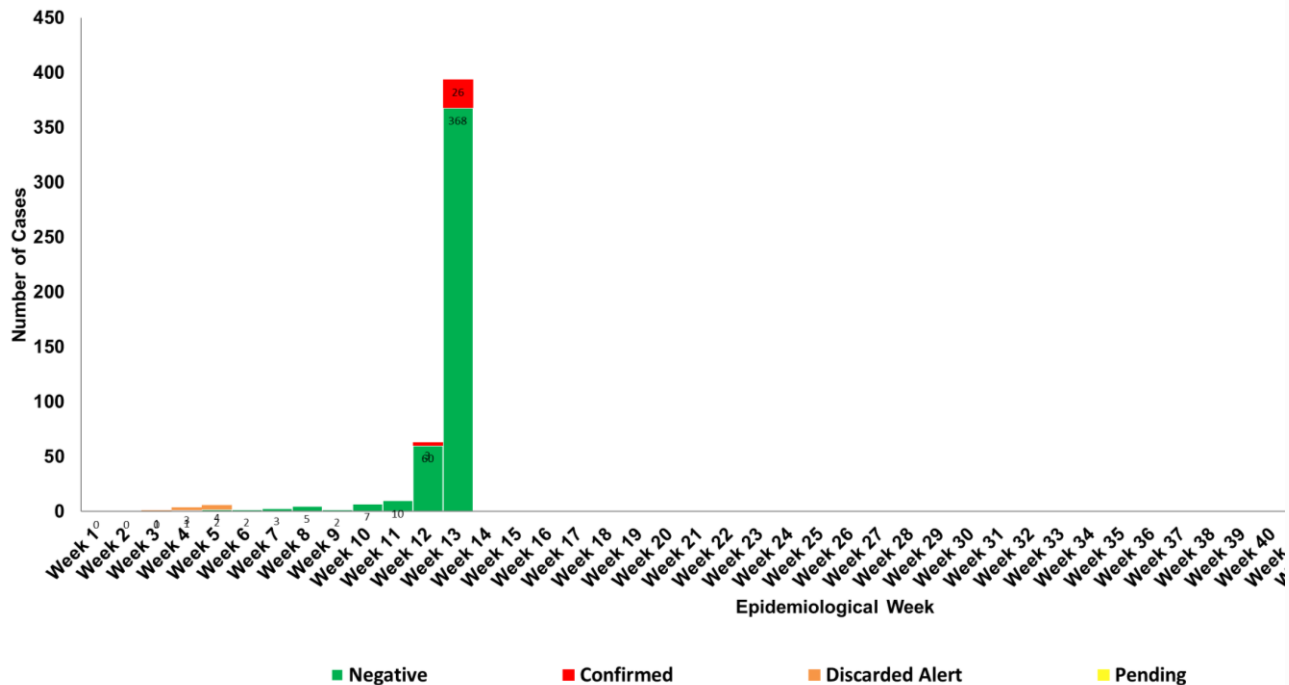


Figure 2: Epi-curve of COVID-19 alerts and testing as of 29th March 2020 (*discarded alerts did not meet the case definition)

Table 2: Summary of COVID-19 cases recorded country-wide as of 29th March 2020

Reporting Province	New Cases	Total Confirmed Cases	New Deaths	Total Deaths	Transmission Classification	Days since last confirmed case discharged
Lusaka	1	27	0	0	Imported/Local	0
Copperbelt	0	2	0	0	Imported	0
Central	0	0	0	0	N/A	0
Southern	0	0	0	0	N/A	0
Eastern	0	0	0	0	N/A	0
Western	0	0	0	0	N/A	0
Northern	0	0	0	0	N/A	0
N/Western	0	0	0	0	N/A	0
Luapula	0	0	0	0	N/A	0
Muchinga	0	0	0	0	N/A	0
Total	1	29	0	0		

- Contact Tracing:** surveillance teams continue to actively follow up contacts of confirmed cases. All travellers who arrived in Zambia aboard Turkish Airways, Kenya Airways, Emirates and South African Airlines from 15th March 2020 to date must remain in self-quarantine and notify the health authorities if they develop any symptoms.

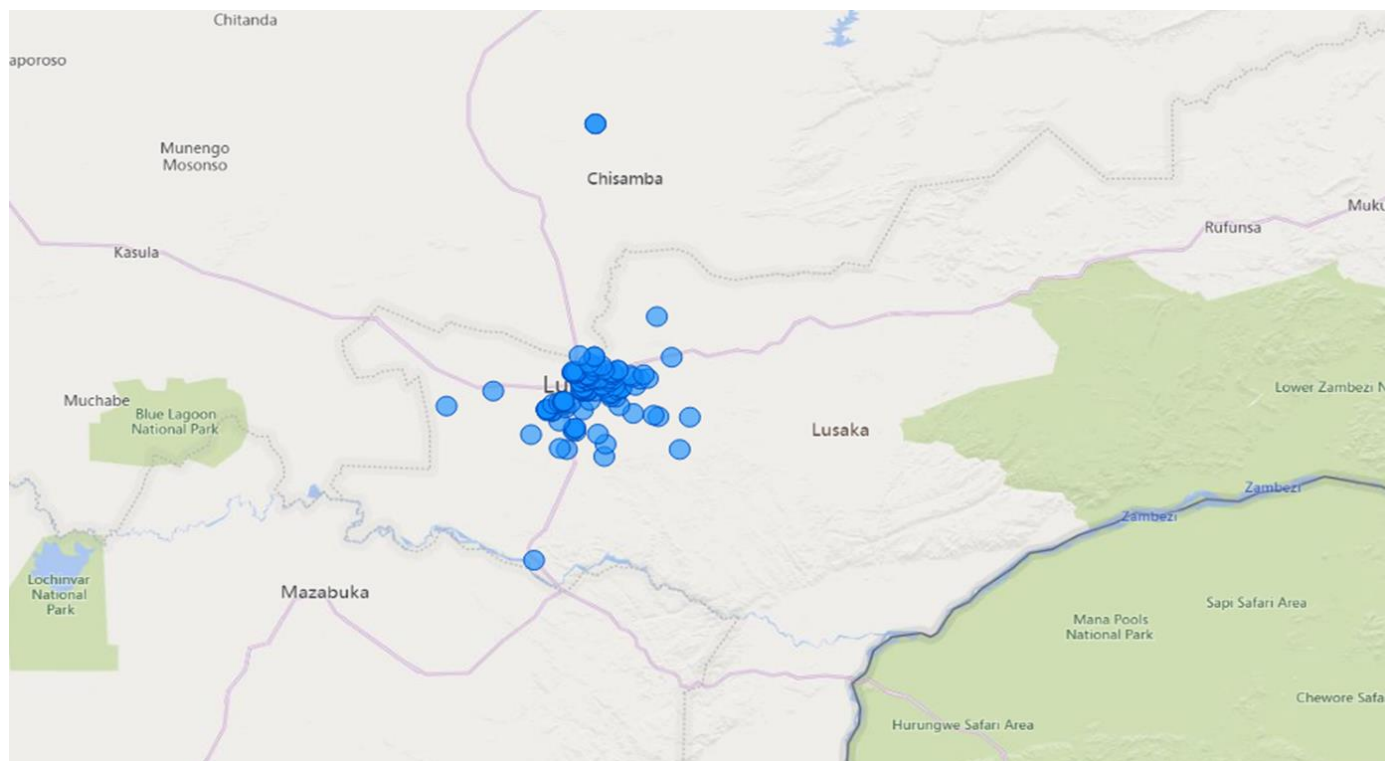


Figure 3: Distribution summary of contacts of confirmed cases, 29th March 2020

- **Arrivals at KKIA and the dry port in Makeni:** over 400 arrivals were recorded on 28th March 2020. Countries of original departure include: Australia, DRC, China, Ethiopia, Germany, Japan, Kenya, Lesotho, Mexico, Mozambique, Nigeria, Seychelles, South Africa, Sudan, Sweden, Tanzania, Uganda, USA and Zimbabwe (See Table 3 below)

Table 3: Number of arrivals by Port of Entry, Lusaka, as of 28th March 2020

Report Date	Point of Entry	Countries of Original Departure	Number of Arrivals
28/03/2020	KKIA	China, Ethiopia, Germany, Japan, Kenya, Mexico, Mozambique, Nigeria, Seychelles, South Africa, Sudan, Sweden, Uganda, USA and Zimbabwe	74
27-28/03/2020	Makeni Dry Port	Australia, DRC, Lesotho, South Africa, Tanzania and Zimbabwe	330
Total Number of Arrivals			404

- Tents for the dry port were provided by UNICEF and mounted with support from ZNS. Furniture was mobilised by the Provincial Health Office. Two extra thermal scanners to enhance screening and tablets for efficient data capture were also provided. Council police have been stationed at the port
- 60 Environmental Health Technologists (EHTs) were trained in Lusaka to reinforce capacity
- **Laboratory:** Total samples received to date is 475; 400 results have been processed with 29 confirmed positive. Summary of tests conducted to date is available in Annex 1
- **Case Management:** Refer to Annex 1 for detailed summary
- **Levy Mwanawasa Hospital:** 29 patients currently admitted (27 confirmed positive; 2 suspected (results pending). One of the 27 confirmed cases has an underlying chronic respiratory illness and is currently on oxygen but improving with specialist medical care. Screening structures have been set up at the facility.
- **Masaiti District Hospital:** 2 confirmed positive case admitted at the facility; no new admissions
- **Tubalange Hospital:** there are currently no cases admitted at the facility
- **University Teaching Hospital:** There are currently no patients admitted at the facility Screening structures have been set up here as well.
- **Isolation facilities** have also been set up in all high risk districts across the ten provinces; detailed list available at Annex 4

3. GAPS AND CHALLENGES

- **Logistics:** low stocks of sample collection supplies and other logistical supplies due to limited availability and increased demand on the global market.
- **Surveillance:** non-adherence to quarantine directives; incorrect/incomplete contact information provided on surveillance forms

4. PRIORITY ACTIONS AND RECOMMENDATIONS

- **Policy Level:** revocation of licenses of businesses not complying with the public health directives
- **Surveillance:** additional thermal scanners to be procured and placed at the POEs to avoid overcrowding and enhance social distancing; set up/identification of designated quarantine facilities to enforce guidelines on quarantine.
- **Logistics:** additional quantities of PPE will be distributed to the PHOs during the week of 29th March 2020.

5. CONCLUSION

Zambia confirmed one new case of COVID-19 in the last 24 hours, bringing the total number to 29 cases. The case had a history of travel to Pakistan. Cases remain confined to Lusaka and Copperbelt provinces only and are being managed at the designated isolation facilities. Early detection through contact tracing, testing and management of COVID-19 cases are key to the response efforts. A robust multi-sectoral response remains in effect to ensure resilience of the health system for provision of routine health care as well as outbreak response.

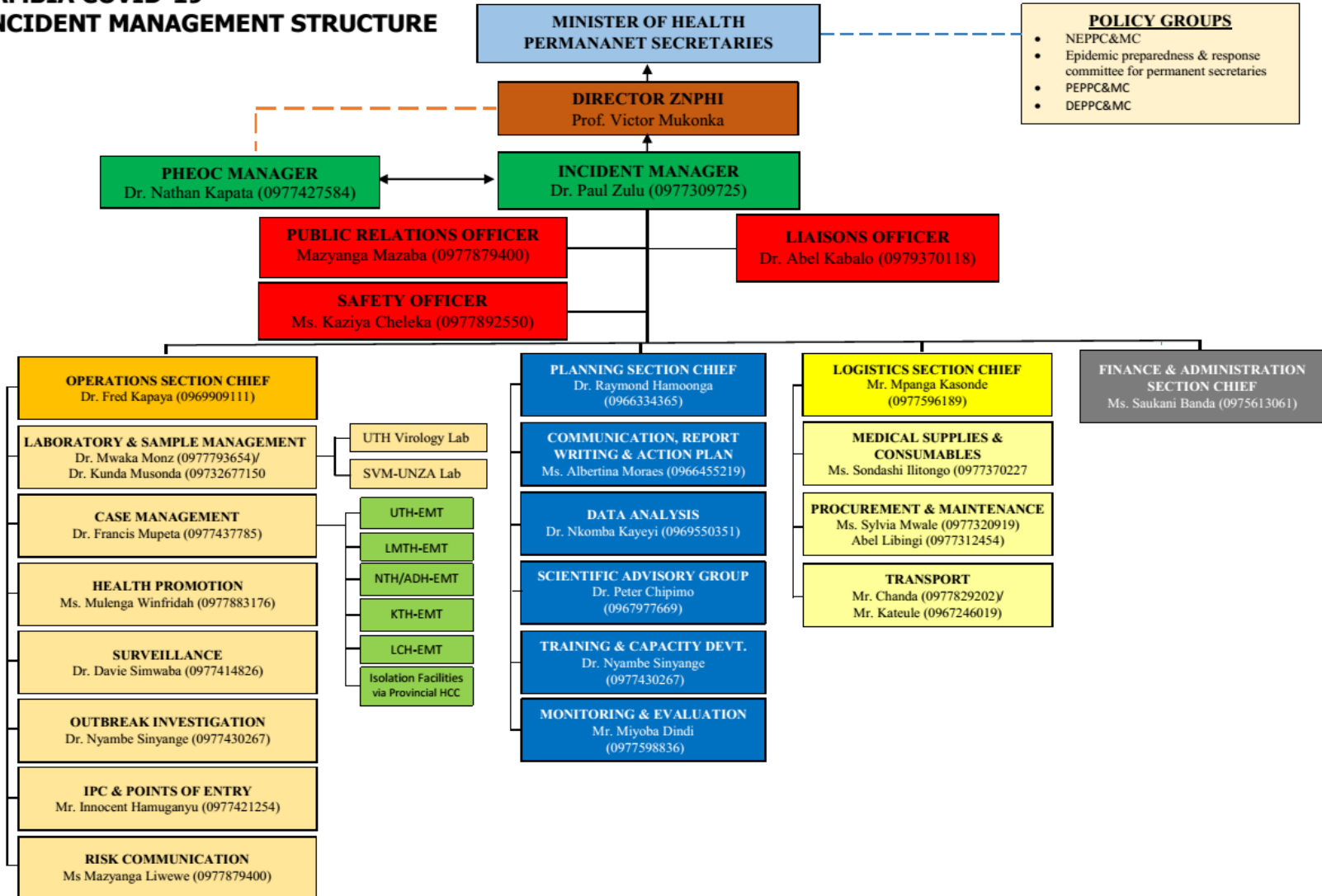
ANNEX 1: EPIDEMIOLOGICAL DATA AS OF 18:00HRS ON 29TH MARCH 2020*

Total Cases	Daily Total			Cumulative since outbreak declared		
Suspected cases	64			-		
Confirmed cases	1			29		
UTH Virology Laboratory						
Samples received	75			475		
Samples with results processed	50			400		
Number of re-tests	1			4		
COVID-19 positive	1			29		
COVID-19 negative	49			371		
Samples with results pending	75			-		
Statistics By Health Facility	Tubalange	Levy	Masaiti	UTH	Daily Total	Cumulative since outbreak declared
Admissions/Discharges						
New Admissions	0	1	0	0	1	48
Currently Admitted	0	29	2	0	31	-
Discharges	0	0	0	0	0	17
Transferred in	0	0	0	0	0	7
Transferred out	0	0	0	0	0	7
Deaths						
Deaths among suspected cases	0	0	0	0	0	0
Deaths among lab confirmed cases	0	0	0	0	0	0

*Reported figures may vary due to continual data cleaning and verification as part of quality assurance

ANNEX 2: NATIONAL LEVEL INCIDENT MANAGEMENT SYSTEM FOR THE COVID-19 PREPAREDNESS RESPONSE

ZAMBIA COVID-19 INCIDENT MANAGEMENT STRUCTURE



ANNEX 3: CORONAVIRUS DISEASE 2019 (COVID-19) CASE DEFINITIONS

Case Definitions

1. Suspect case:

A. Patient with acute respiratory infection (fever and at least one sign/symptom of respiratory disease e.g. cough, shortness of breath), AND with no other aetiology that fully explains the clinical presentation AND a history of travel to or residence in a country/area or territory reporting local transmission of COVID-19 during the 14 days prior to symptom onset,

OR

B. Patient with any acute respiratory illness AND having been in contact with a confirmed or probable COVID-19 case in the last 14 days prior to symptom onset,

OR

C. Patient with severe acute respiratory infection (fever and at least one sign/symptom of respiratory disease e.g. cough, shortness of breath), AND requiring hospitalization AND with no other aetiology that fully explains the clinical presentation

2. Probable case: A suspect case for whom testing for COVID-19 is inconclusive or is tested positive using a pan-coronavirus assay and without laboratory evidence of other respiratory pathogens.

3. Confirmed case: A person with laboratory confirmation of COVID-19 infection, irrespective of clinical signs and symptoms.

4. Person Under Investigation: a suspected case, irrespective of admission status, with either history of travel to an area with local transmission or worked in/attended a health care facility treating COVID-19 infections or admission to a facility for severe pneumonia of unknown aetiology

5. Contact: a person who experienced any one of the following exposures during the 2 days before and the 14 days after the onset of symptoms of a probable or confirmed case: a. Face-to-face contact with a probable or confirmed case within 1 meter and for more than 15 minutes; b. Direct physical contact with a probable or confirmed case; c. Direct care for a patient with probable or confirmed COVID-19 disease without using proper personal protective equipment; OR d. Other situations as indicated by local risk assessments.

ANNEX 4: LIST OF DESIGNATED ISOLATION FACILITIES FOR THE COVID-19 PREPAREDNESS RESPONSE

PROVINCE	DISTRICT	ISOLATION FACILITY
Eastern	Chipata	Walera HP and Chipata District Hospital
	Chadiza	Sadzu RHC and Chilenga HP
	Lundazi	Lundazi New Hospital Male Ward
	Mambwe	Agriculture Field Training Centre and ADRA shade in Nsefu
	Petauke	Zuze Health Post
	Katete	Katete Livestock Market
	Nyimba	Chininkhu Health Post
	Sinda	Ukasimbe Health Post and Chinzule HP
	Vubwi	Chigwe Health Post
	Kasenengwa	Kanzutu Health Post
	Lumezi	Lumezi Hospital, Mwasemphangwe Zonal and Mwanya RHC
	Chasefu	Kanyanga Mission Hospital
	Chipangali	Mkanda RHC and Chinunda RHC
	Lusangazi	Ukwimi Trades
Southern	Livingstone	Mosi Oa Tunya Health centre
	Zimba	Zimba Basic school
	Siavonga	Kabbila Health Post
	Pemba	Pemba Main Clinic
	Kalomo	Mawaya Clinic
	Monze	Mulumbwa Health Post
	Mazabuka	Research clinic
	Chikankata	Nansenga Rural Health centre
	Namwala	Nchole Health Post
	Choma	Njase Clinic
	Gweembe	Munyumbwe HAHC
	Kazungula	Kazungula hospital admin block
	Sinazongwe	Sinazongwe rural health centre
Lusaka	Chilanga	Tubalange Mini Hospital, Mount Makulu Health Post

	Chirundu	Lumbembe Clinic
	Kafue	Shikoswe Clinic
	Luangwa	Kavalamanja RHC, Chitpoe RHC, Kasinsa RHC, Mandombe RHC
	Lusaka	Levy Mwanawasa, UTH, Tubalange Mini Hospital, Chawama SD, Matero SD, Chilenje SD, Kanyama SD, Chipata SD
	Rufunsa	Rufunsa RHC, Chinyunyu RHC
Muchinga	Isoka	Lualizi and Kafwimbi RHC
	Lavushimanda	Red Rhino school, Muwele Market .
	Nakonde	Nakonde Hospital and Nakonde Urban Clinic.
	Chama	FTC
	Shiwang'andu	Lwanya RHC
	Mpika	Chibansa RHC
	Kanchibiya	Kopa Primary school ,LuchembeKanchibiya resettlement scheme,Chalabesa RHC.
	Chinsali	Nambuluma RHC
	Mafinga	Mulekatembo
Western	Senanga	Litambya RHC
	Shangombo	Shangombo Secondary School
		Shangombo RHC
	Kaoma	Kaoma Trades
		Kaoma Youth Resource Centre
	Luampa	Kahumbu Primary School
Lukulu	Lukulu Old Hospital	

	Mitete	Lukulu Old Hospital
	Kalabo	Wenela RHC
	Nalolo	Muoyo RHC
	Sioma	Old Nangwesh Refugee Camp
	Mulobezi	Mulobezi HAHC
	Mwandi	Situlu Health Post
	Sesheke	Mulimambango
	Sikongo	Sikongo RHC
	Limulunga	Nan'oko Health Post
	Mongu	Mongu D Hospital, Mweeke HP
	Nkeyema	Nkeyema Zonal Health Centre
Central	Chitambo	Muchinka RHC
	Mkushi	Kasalamkanga RHC
	Serenje	Serenje Boma School
	Iuano	Old Mkushi Health Centre
	Kapiri	Tazara dry port
	Kabwe	Old Mukobeko clinic
	Chibombo	Twalumba RHC
	Chisamba	Malombe RHC
	Shibuyunji	Sichobo Rural Health Centre
	Mumbwa	Mumbwa Urban Clinic
	Itezhi tezhi	Itezhi tezhi Basic School/Uphill Scholl and and Itezhi Tezhi Boarding School
	Ngabwe	Iwonde primary school

Copperbelt	Chililabombwe	Council Hall	
	Chingola	Kalilo Health Centre	
	Kalulushi	Kalulushi Urban Health Centre	
	Kitwe	Garnerton Clinic	
	Luanshya	Chibolya Clinic	
	Lufwanyama	Shimukunami Rural Health Centre	
	Masaiti	Masaiti District Hospital	
	Mpongwe	Bwembelelo Health Post	
	Mufulira	Mutundu RHC	
	Ndola	Itawa clinic (2019-nCoV)	
	Northern	Chilubi	Chaba RHC Chilubi RHC
		Kaputa	Kaputa RHC Kalaba RHC Kapepula HP
Kasama		Lukupula Rural Centre	
Lunte		Chitoshi RHC Mukupa Koama RHC Mulenga Mapesa HP	
Lupososhi		Chungu RHC Nsombo RHC	
Luwingu		Ipusikilo RHC	
Mbala		Chulungoma Urban Clinic Kaluluzi Health Post	
Mporokoso		Township Clinic Chizala RHC	
Mpulungu		Mpulungu Urban Clinic	
Mungwi		Mungwi Baptist HC, Kayambi RHC	
Nsama		NsumbuRHC	
Senga		Nsumbu RHC, Mwiluzi HP, Sumbi HP	

