

## ZAMBIA SITUATION REPORT NO. 123

Disease Outbreak: COVID-19

Response start date: 30<sup>th</sup> January, 2020

Outbreak Declared: 18<sup>th</sup> March, 2020

Report date: Wednesday 27<sup>th</sup> January 202

Prepared by: MOH/ZNPPI/WHO

Correspondence: [ims.covid@znphi.co.zm](mailto:ims.covid@znphi.co.zm)

### 1. SITUATION UPDATE

*This week (25<sup>th</sup> – 31<sup>st</sup> Jan)* ↑ **Cases 3,574** ↓ **Deaths 49** ↑ **Recoveries 5,322**

#### 1.1 CURRENT CASE NUMBERS (as of 09:00 hours CAT)

- In the past 24 hrs, there were **1,289 new confirmed cases, 16 deaths and 920 recoveries**.
- Cumulative number of confirmed COVID-19 cases recorded to date is **48,911** with **688 deaths (CFR=1.40%)** and **41,282 recoveries (84.40% recovered)**.
- Of the 688 total deaths among the confirmed cases, **301 have been classified as COVID-19 deaths (CFR=0.62%)** and **382 as associated deaths; 5 deaths are pending classification**. See Annex 1 for definitions
- There are currently **6,941 active cases**: of these, 492 are hospitalised (with 308 on Oxygen therapy and 48 in critical condition); 6,449 patients are under community management.

#### Global Numbers

(Source: JHU)

↑ **100,837,607 Confirmed**

↓ **2,167,096 Deaths**

↑ **55,502,986 Recoveries**

#### Africa Numbers

(Source: Africa CDC)

↑ **3,473,940 Confirmed**

↓ **86,898 Deaths**

↑ **2,955,394 Recoveries**

### 2. EPIDEMIOLOGICAL HIGHLIGHTS

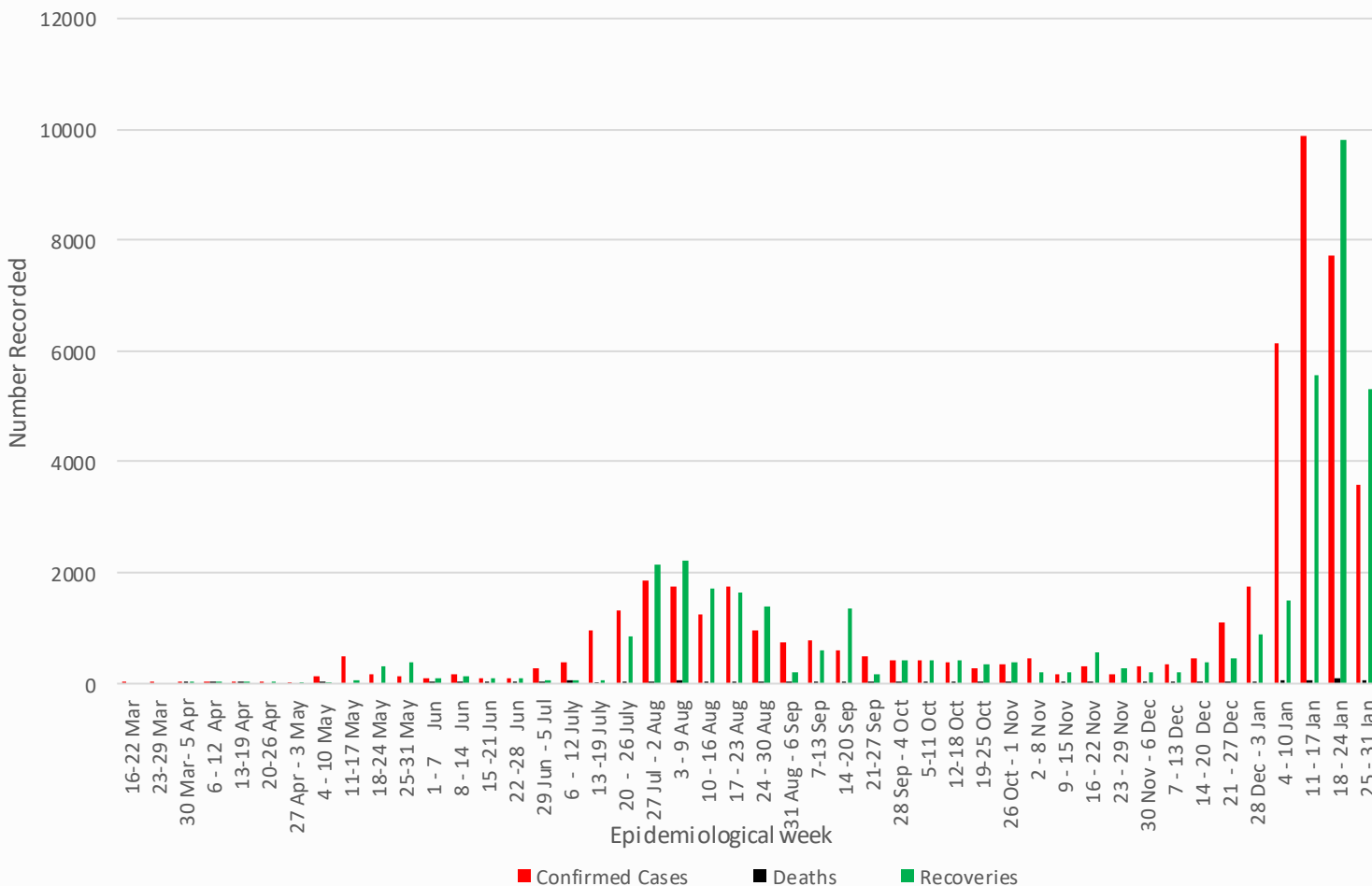


Figure 1: Weekly COVID-19 confirmed cases (N=48,911), deaths (N=688) and recoveries (N=41,282) as of 27<sup>th</sup> January 2021

- **Age and sex distribution:** Below is a table showing the age and sex distribution of confirmed cases and death, based on data compiled up to 20<sup>th</sup> January, 2021

| Age Groups                | Positive Cases (%) |                   | Deaths (%)       |                  | CFR (%)      |
|---------------------------|--------------------|-------------------|------------------|------------------|--------------|
|                           | Male               | Female            | Male             | Female           |              |
| ≤1 year                   | 0.34%              | 0.29%             | 0.52%            | 1.29%            | 3.47%        |
| >1-4 years                | 0.54%              | 0.46%             | 0.77%            | 1.29%            | 2.48%        |
| 5-9 years                 | 0.85%              | 0.90%             | 0.52%            | 1.03%            | 1.06%        |
| 10-14 years               | 1.08%              | 1.39%             | 0.26%            | 0.00%            | 0.13%        |
| 15-19 years               | 1.99%              | 2.76%             | 1.29%            | 1.55%            | 0.72%        |
| 20-24 years               | 5.92%              | 7.03%             | 3.35%            | 0.77%            | 0.38%        |
| 25-29 years               | 8.12%              | 7.63%             | 4.64%            | 2.32%            | 0.53%        |
| 30-39 years               | 15.05%             | 11.42%            | 11.34%           | 6.19%            | 0.80%        |
| 40-49 years               | 11.58%             | 6.65%             | 10.05%           | 2.84%            | 0.85%        |
| 50+ years                 | 9.26%              | 6.73%             | 26.55%           | 23.45%           | 3.77%        |
| <b>Total %</b>            | <b>54.73%</b>      | <b>45.27%</b>     | <b>59.28%</b>    | <b>40.72%</b>    | <b>1.41%</b> |
| <b>Median Age (Range)</b> | <b>35 (1-99)</b>   | <b>31 (1-100)</b> | <b>47 (1-94)</b> | <b>56 (1-96)</b> |              |

Figure 4: Age and sex distribution of confirmed cases/deaths (based on data compiled up to 20<sup>th</sup> January, 2021)

### 3. ACTIONS TO DATE

#### 3.1 CO-ORDINATION

##### ➤ Regional/Continental level:

- Zambia hosts the Southern Africa Regional Collaborating Centre of the Africa CDC and has been coordinating the response at regional level. To date, **Southern Africa has recorded 1,654,134 confirmed cases; 46,018 deaths; and 1,423,351 recoveries.** Zambia continues to participate in AU meetings to ensure continued regional and continental trade and strategies to stop transmission of COVID-19.

##### ➤ National Level:

- The government continues to enforce the measures and interventions to control the spread of COVID-19 countrywide as outlined in the Statutory instruments **SI21 and SI22 of 2020 on COVID-19 and presidential directives** issued in March 2020.
- A **COVID-19 contingency plan** outlining the country's COVID-19 preparedness and response activities was finalised and continues to be regularly updated as the outbreak evolves.

#### BACKGROUND

The WHO was alerted of an increase in the number of pneumonia cases of unknown cause detected in Wuhan City, Hubei Province, China. The disease now called Coronavirus Disease 2019 (COVID-19) is caused by a new coronavirus named SARS-CoV-2. The WHO declared the outbreak a PHEIC on 30<sup>th</sup> January and further declared COVID-19 a pandemic on 12<sup>th</sup> March. Zambia recorded its first two cases of COVID-19 on 18<sup>th</sup> March 2020. The first 28 cases in Zambia all had a history of travel to Europe or Asia. Three weeks into the outbreak, cases were noted among people without history of travel but in contact with confirmed cases. By mid-June 2020, cases had been reported in all ten provinces, with Western province being the last to confirm cases of COVID-19. Generalised local person-person transmission is now established throughout the country.

- Technical co-ordinating meetings are being held with cooperating partners and other stakeholders. The meetings are chaired by the Director, ZNP HI
- The Incident Management System (IMS) continues to meet at ZNP HI (with a Zoom link provided to ensure social distancing) on Tuesdays and Thursdays. The IMS structure is available at **Annex 2**

### 3.2 SURVEILLANCE

➤ **Newly reported COVID-19 cases:** surveillance continues to identify new cases around the country. See table 1 below for a breakdown of statistics reported within the last 24hrs.

Table 1: Breakdown of confirmed COVID-19 cases reported on 27<sup>th</sup> January 2021

| PROVINCE             | NUMBERS BY DISTRICT   |                  | PROVINCIAL RECOVERIES |
|----------------------|---|------------------|-----------------------|
|                      | CASES   | DEATHS           |                       |
| <b>CENTRAL</b>       | Chibombo 13, Chisamba 17, Chitambo 31, Itezhi-tezhi 9, Kabwe 41, Kapiri Mposhi 5, Luano 2, Mumbwa 5, Ngabwe 1, Serenje 15, Shibuyunji 3 <b>[TOTAL: 142]</b> | 1                | 56                    |
| <b>COPPERBELT</b>    | Chilila bombwe 29, Chingola 35, Kalulushi 14, Kitwe 30, Luanshya 33, Masaiti 4, Mufulira 6, Ndola 77 <b>[TOTAL: 228]</b>                                    | 5                | 71                    |
| <b>EASTERN</b>       | Chadiza 2, Chasefu 1, Chipata 35, Katete 5, Lumezi 1, Lundazi 1, Mambwe 2, Nyimba 3, Petauke 1, Sinda 2, Vubwi 1 <b>[TOTAL: 54]</b>                         | 1                | 18                    |
| <b>LUAPULA</b>       | Chembe 1, Chienge 1, Kawambwa 1, Mansa 31, Mwansabombwe 4, Nchelenge 10, Samfya 2 <b>[TOTAL: 50]</b>  | 0                | 169                   |
| <b>LUSAKA</b>        | Chilanga 9, Chongwe 9, Kafue 33, Luangwa 5, Lusaka 400, Rufunsa 7 <b>[TOTAL: 463]</b>   | 5                | 167                   |
| <b>MUCHINGA</b>      | Chama 7, Mpika 17, Nakonde 8 <b>[TOTAL: 32]</b>   | 1                | 17                    |
| <b>NORTHERN</b>      | Chilubi 4, Kasama 17, Luwingu 2, Mbala 5, Mporokoso 5, Mungwi 3, Nsama 3 <b>[TOTAL: 39]</b>   | 2                | 37                    |
| <b>NORTH-WESTERN</b> | Ikelenge 2, Kalumbila 109, Kasempa 12, Manyinga 3, Mwini Lunga 3, Solwezi 34, Zambezi 11 <b>[TOTAL: 174]</b>  | 0                | 207                   |
| <b>SOUTHERN</b>      | Chikankata 4, Choma 1, Gwembe 3, Kalomo 2, Kazungula 1, Mazabuka 13, Monze 8, Namwala 4, Pemba 2, Siavonga 4, Zimba 3 <b>[TOTAL: 45]</b>                    | 0                | 128                   |
| <b>WESTERN</b>       | Kalabo 11, Kaoma 3, Limulunga 2, Luampa 3, Mongu 2, Mwandi 23, Nkeyema 6, Senanga 2, Sikongo 4, Sioma 1 <b>[TOTAL: 57]</b>                                  | 1                | 50                    |
| <b>TOTAL</b>         | <b>1,289 New Cases</b>  | <b>16 Deaths</b> | <b>920 Recoveries</b> |

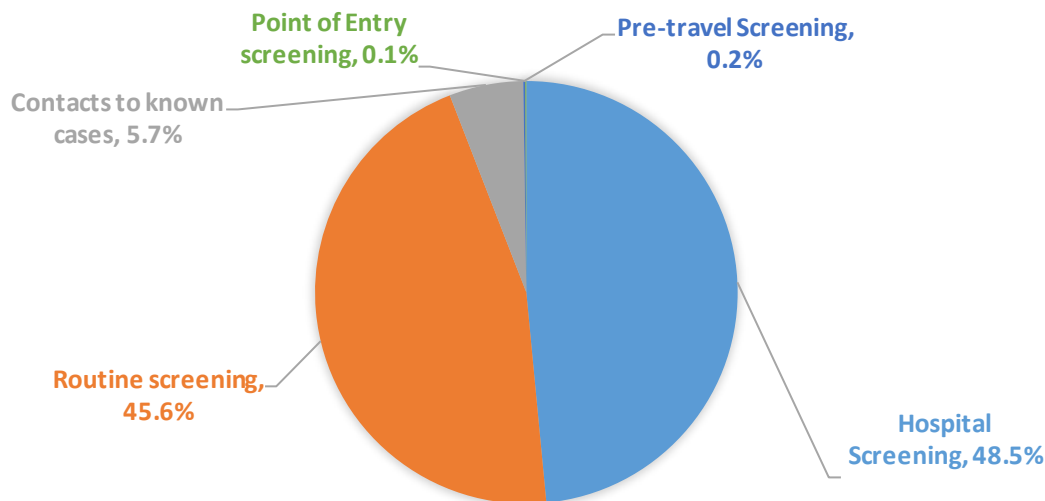


Figure 5: Categorisation of confirmed cases reported 27<sup>th</sup> January 2021

### 3.4 CASE MANAGEMENT

- There are currently 492 COVID-19 patients hospitalised in facilities around the country; of these, 308 are on Oxygen therapy and 48 are in critical condition
- Sixteen (16) deaths were recorded in the last 24hrs: of these, nine (9) were classified as COVID-19 deaths, two (2) as COVID-associated and five (5) deaths are pending classification.

Table 2: National distribution of hospitalised COVID-19 patients by province – 27<sup>th</sup> January 2021

| PROVINCE     | FACILITY          | No PATIENTS | PATIENTS ON OXYGEN | CRITICAL  | MORTALITY | PROVINCIAL DISCHARGES |
|--------------|-------------------|-------------|--------------------|-----------|-----------|-----------------------|
| LUSAKA       | LEVY              | 95          | 79                 | 29        | 2         | 167                   |
|              | UTH               | 57          | 43                 | 6         | 1         |                       |
|              | Maina Soko        | 29          | 20                 | 3         | 1         |                       |
|              | Victoria          | 9           | 9                  | 0         | 0         |                       |
|              | Fairview          | 4           | 3                  | 0         | 0         |                       |
|              | MultiCare Chinese | 12          | 5                  | 0         | 0         |                       |
|              | Medland           | 9           | 7                  | 4         | 0         |                       |
|              | Tubalange         | 4           | 2                  | 1         | 0         |                       |
|              | Bauteni           | 1           | 0                  | 0         | 0         |                       |
|              | Kafue             | 4           | 2                  | 0         | 0         |                       |
| CENTRAL      | Chongwe           | 4           | 4                  | 0         | 1         | 56                    |
|              | Bwacha Kabwe      | 4           | 0                  | 0         | 0         |                       |
| COPPERBELT   | Kabwe             | 7           | 3                  | 0         | 1         | 71                    |
|              | NTH               | 37          | 29                 | 0         | 1         |                       |
|              | KTH               | 17          | 13                 | 2         | 3         |                       |
|              | Masaiti           | 3           | 1                  | 0         | 0         |                       |
|              | NNGH              | 15          | 3                  | 0         | 0         |                       |
|              | KCM               | 20          | 9                  | 0         | 1         |                       |
| EASTERN      | Mufulira          | 22          | 8                  | 0         | 0         | 18                    |
|              | CCH               | 16          | 8                  | 1         | 1         |                       |
|              | CDH               | 14          | 9                  | 2         | 0         |                       |
|              | Mwami             | 4           | 0                  | 0         | 0         |                       |
|              | Petauke           | 4           | 3                  | 0         | 0         |                       |
|              | Nyimba            | 1           | 0                  | 0         | 0         |                       |
| LUAPULA      | Lundazi           | 3           | 2                  | 0         | 0         | 169                   |
|              | Chadiza           | 4           | 1                  | 0         | 0         |                       |
| MUCHINGA     | Mansa             | 12          | 10                 | 0         | 0         | 17                    |
|              | Chilonga          | 0           | 0                  | 0         | 1         |                       |
| NORTHERN     | Chinsali          | 1           | 0                  | 0         | 0         | 37                    |
|              | Kasama Gen        | 6           | 4                  | 0         | 2         |                       |
|              | Kasama Lukupa     | 6           | 0                  | 0         | 0         |                       |
|              | Luwingu           | 2           | 1                  | 0         | 0         |                       |
| NORTHWESTERN | Mbala             | 2           | 1                  | 0         | 0         | 207                   |
|              | SGH               | 13          | 6                  | 0         | 0         |                       |
|              | Mary Begg         | 4           | 2                  | 0         | 0         |                       |
|              | Mukinge           | 4           | 0                  | 0         | 0         |                       |
|              | Lumwana DH        | 1           | 1                  | 0         | 0         |                       |
|              | Kalumbila MB      | 2           | 1                  | 0         | 0         |                       |
| SOUTHERN     | Livingstone       | 8           | 4                  | 0         | 0         | 128                   |
|              | Choma             | 2           | 2                  | 0         | 0         |                       |
|              | Monze             | 7           | 5                  | 0         | 0         |                       |
|              | Namwala           | 6           | 0                  | 0         | 0         |                       |
|              | Mazabuka          | 2           | 1                  | 0         | 0         |                       |
|              | Chikankata        | 2           | 1                  | 0         | 0         |                       |
|              | Maamba            | 1           | 0                  | 0         | 0         |                       |
|              | Siavonga          | 2           | 0                  | 0         | 0         |                       |
|              | Kalomo            | 2           | 1                  | 0         | 0         |                       |
| WESTERN      | Macha             | 2           | 0                  | 0         | 0         | 50                    |
|              | Mongu             | 5           | 4                  | 0         | 0         |                       |
|              | Kaoma             | 1           | 1                  | 0         | 1         |                       |
| <b>TOTAL</b> |                   | <b>492</b>  | <b>308</b>         | <b>48</b> | <b>16</b> | <b>920</b>            |

- Below is the community management model and admission/discharge criteria for persons who test positive for COVID-19:

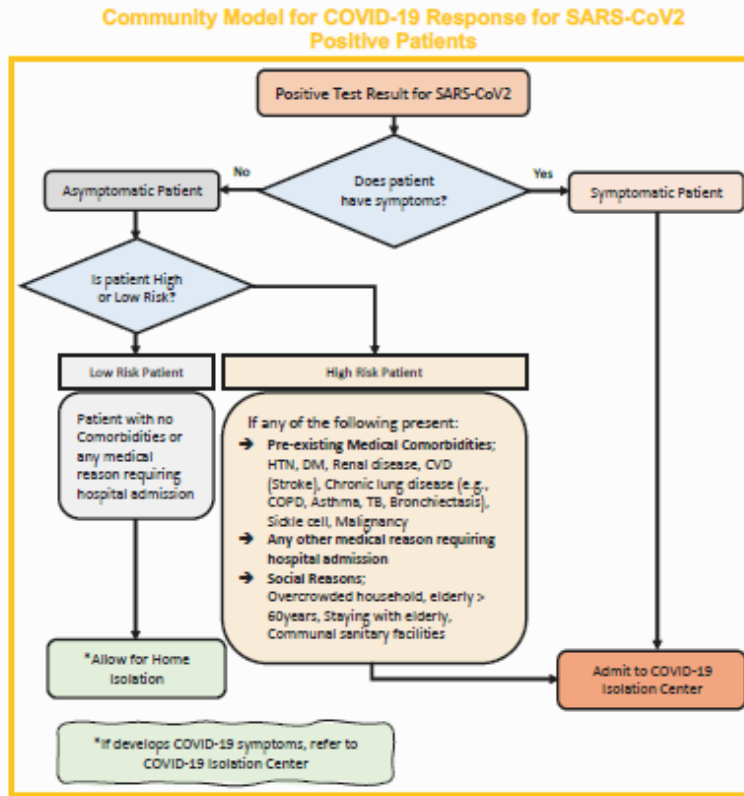


Figure 6: Community management model for COVID-19 patients

|  |  |  |   |
|--|--|--|---|
| <b>S E T T I N G</b>                             | Hospital/Facility Care   | Patients with Medical Conditions requiring continued Care beyond COVID-19 Recovery                 | Home Care   |
| <b>A D M I S S I O N</b>                         | <ul style="list-style-type: none"> <li>→ Any symptoms for COVID-19</li> <li>→ Asymptomatic High-Risk patients</li> <li>→ Presence of other Medical conditions</li> <li>→ Where Home Isolation is not feasible</li> </ul> | <ul style="list-style-type: none"> <li>→ As medically indicated</li> </ul>                         | <ul style="list-style-type: none"> <li>→ Asymptomatic</li> <li>→ No comorbidity</li> <li>→ If home Isolation feasible</li> </ul>      |
| <b>D I S C H A R G E / D E I S O L A T I O N</b> | <ul style="list-style-type: none"> <li>→ Asymptomatic for at least 3 days plus 1 negative PCR at day 7 or beyond AND</li> <li>→ 14 days since first Positive PCR</li> </ul>  | <ul style="list-style-type: none"> <li>→ Two negative PCR Tests at least 24 hours apart</li> </ul> | <ul style="list-style-type: none"> <li>→ 1 negative PCR at day 7 or beyond AND</li> <li>→ 14 days since first Positive PCR</li> </ul> |

Figure 7: Admission and Discharge criteria for COVID-19 patients

### 3.5 LABORATORY AND SAMPLE MANAGEMENT

- Zambia is utilising a number of testing platforms to run COVID-19 diagnostics, including real-time Polymerase Chain Reaction (RT-PCR), Gene Xpert, Hologic Panther, RDT, and Roche Cobas 6800. Laboratory facilities are available in all 10 provinces. Table 2 lists the currently **designated laboratories**

Table 3: National Laboratory Diagnostic Capacity for COVID-19 by province

| PROVINCE             | INSTITUTION                                 | TESTING PLATFORM(S)                          |
|----------------------|---|--|
| <b>Central</b>       | Kabwe General Hospital                      | Gene Xpert                                   |
|                      | TDRC, Ndola                                 | RT-PCR                                       |
| <b>Copperbelt</b>    | Arthur Davison Children's Hospital          | Cobas 6800                                   |
| <b>Eastern</b>       | Chipata General Hospital                    | Gene Xpert                                   |
| <b>Luapula</b>       | Mansa General Hospital                      | Gene Xpert                                   |
|                      | ZNS Luamfumu                                | Gene Xpert                                   |
| <b>Lusaka</b>        | UTH, Levy (Virology, ACOE, PCOE), Lusaka    | RT-PCR; Gene Xpert; Cobas 6800; Panther; RDT |
|                      | UNZA – SVM, Lusaka                          | RT-PCR                                       |
|                      | CIDRZ, Lusaka                               | RT-PCR                                       |
|                      | CHAZ, Lusaka                                | RT PCR                                       |
|                      | Lancet                                      | RT PCR                                       |
|                      | Mtendere Mission Hospital, Chirundu         | Gene Xpert                                   |
|                      | MedLand Hospital, Lusaka                    | RT PCR                                       |
|                      | Victoria Hospital                           | RT PCR                                       |
|                      | Zambia Air Force Hospital, Lusaka           | Gene Xpert                                   |
|                      | ZNPHRL, Lusaka                              | RT PCR                                       |
| <b>Muchinga</b>      | Chinsali General Hospital                   | Gene Xpert & PCR                             |
| <b>Northern</b>      | Kasama General Hospital                     | Gene Xpert                                   |
|                      | Solwezi General Hospital, Solwezi           | Panther                                      |
| <b>North-western</b> | Kansashi Mine Hospital (Mary Begg), Solwezi | Gene Xpert                                   |
|                      | Macha Research Trust                        | RT-PCR                                       |
| <b>Southern</b>      | Livingstone Teaching Hospital               | Gene Xpert                                   |
| <b>Western</b>       | Lewanika General Hospital                   | Gene Xpert                                   |

- In the past week (18<sup>th</sup> to 24<sup>th</sup> January), **68,941 tests** were conducted (compared to **69,353** tests the previous week), out of which **11.22%** tested positive for SARS-CoV-2 (compared to 14.24% the previous week).
- Current week (25<sup>th</sup> to 31<sup>st</sup> January): so far, **31,062 tests** have been conducted (**20.42%** positivity)
- In the last 24hrs, **11,862 tests** were conducted, out of which **1,289** samples tested positive for SARS-CoV-2 (10.87% positive).
- To date, a total of **867,571 tests** have been conducted, with a cumulative **48,911 confirmed positive (5.64% positivity rate)** for SARS-CoV-2. The testing coverage is **51,034 per 1,000,000 population**

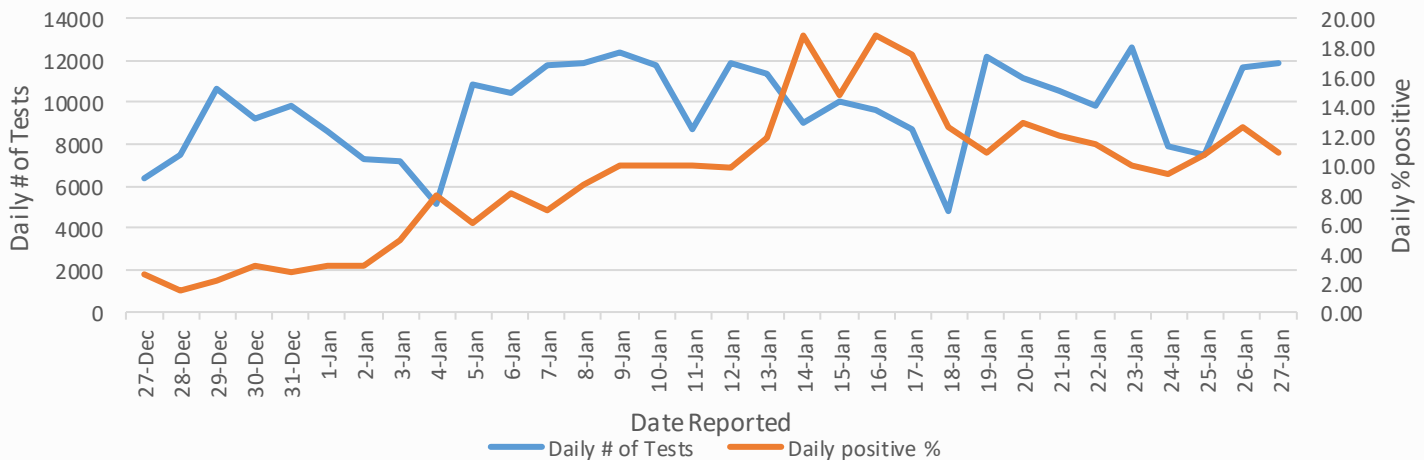


Figure 6: Daily number of tests vs % of positive results recorded (27<sup>th</sup> December 2020 to 27<sup>th</sup> January, 2021

## ANNEX 1: CORONAVIRUS DISEASE 2019 (COVID-19) CASE DEFINITIONS

### **1. Suspect case:**

A. Patient with acute respiratory infection (fever and at least one sign/symptom of respiratory disease e.g. cough, shortness of breath), AND with no other aetiology that fully explains the clinical presentation AND a history of travel to or residence in a country/area or territory reporting local transmission of COVID-19 during the 14 days prior to symptom onset,

**OR**

B. Patient with any acute respiratory illness AND having been in contact with a confirmed or probable COVID-19 case in the last 14 days prior to symptom onset,

**OR**

C. Patient with severe acute respiratory infection (fever and at least one sign/symptom of respiratory disease e.g. cough, shortness of breath), AND requiring hospitalization AND with no other aetiology that fully explains the clinical presentation

**2. Probable case:** A suspect case for whom testing for COVID-19 is inconclusive or is tested positive using a pan-coronavirus assay and without laboratory evidence of other respiratory pathogens.

**3. Confirmed case:** A person with laboratory confirmation of COVID-19 infection, irrespective of clinical signs and symptoms.

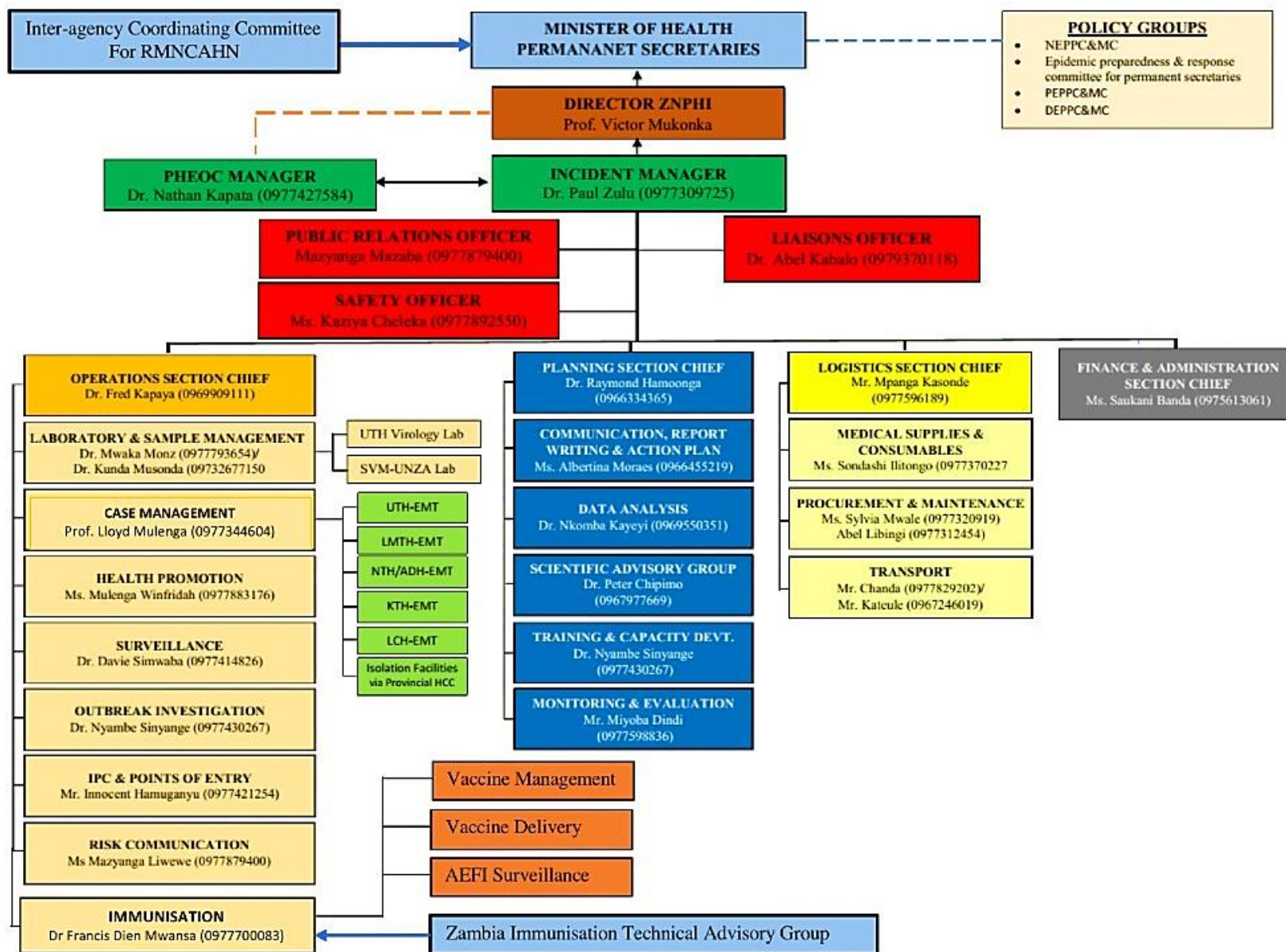
**4. COVID-19 Death:** COVID-19 death is defined for surveillance purposes as a death resulting from a clinically compatible illness in a probable or confirmed COVID-19 case, unless there is a clear alternative cause of death that cannot be related to COVID disease (e.g. trauma). There should be no period of complete recovery between the illness and death.

**5. COVID-19 Associated Death:** a death of an individual in whom COVID-19 has been detected but it is not the primary cause of death

**6. COVID-19 Unclassified Death:** a death of an individual in whom COVID-19 has been detected but the cause of death is yet to be classified as either a COVID-19 death or associated death following expert review

**7. Contact:** a person who experienced any one of the following exposures during the 2 days before and the 14 days after the onset of symptoms of a probable or confirmed case: a. Face-to-face contact with a probable or confirmed case within 1 meter and for more than 15 minutes; b. Direct physical contact with a probable or confirmed case; c. Direct care for a patient with probable or confirmed COVID-19 disease without using proper personal protective equipment; OR d. Other situations as indicated by local risk assessments.

## ANNEX 2: NATIONAL LEVEL INCIDENT MANAGEMENT SYSTEM FOR THE COVID-19 PREPAREDNESS RESPONSE





### ANNEX 3: LIST OF DESIGNATED ISOLATION FACILITIES FOR THE COVID-19 OUTBREAK RESPONSE

| PROVINCE        | DISTRICT    | ISOLATION FACILITY  |
|-----------------|-------------|---|
| <b>Eastern</b>  | Chipata     | Walera HP and Chipata District Hospital                   |
|                 | Chadiza     | Sadzu RHC and Chilenga HP                                 |
|                 | Lundazi     | Lundazi New Hospital Male Ward                            |
|                 | Mambwe      | Agriculture Field Training Centre and ADRA shade in Nsefu |
|                 | Petauke     | Zuze Health Post  |
|                 | Katete      | Katete Livestock Market                                   |
|                 | Nyimba      | Chininkhu Health Post                                     |
|                 | Sinda       | Ukasimbe Health Post and Chinzule HP                      |
|                 | Vubwi       | Chigwe Health Post  |
|                 | Kasenengwa  | Kanzutu Health Post                                       |
|                 | Lumezi      | Lumezi Hospital, Mwasemphangwe Zonal and Mwanya RHC       |
|                 | Chasefu     | Kanyanga Mission Hospital                                 |
|                 | Chipangali  | Mkanda RHC and Chinunda RHC                               |
|                 | Lusangazi   | Ukwimi Trades   |
| <b>Southern</b> | Livingstone | Mosi Oa Tunya Health centre                               |
|                 | Zimba       | Zimba Basic school  |
|                 | Siavonga    | Kabbila Health Post                                       |
|                 | Pemba       | Pemba Main Clinic   |
|                 | Kalomo      | Mawaya Clinic   |
|                 | Monze       | Mulumbwa Health Post                                      |
|                 | Mazabuka    | Research clinic   |
|                 | Chikankata  | Nansenga Rural Health centre                              |
|                 | Namwala     | Nchole Health Post  |
|                 | Choma       | Njase Clinic  |
|                 | Gweembe     | Munyumbwe HAHC  |
|                 | Kazungula   | Kazungula hospital admin block                            |
|                 | Sinazongwe  | Sinazongwe rural health centre                            |
| <b>Lusaka</b>   | Chilanga    | Tubalange Mini Hospital, Mount Makulu Health Post         |

|                 |                |  |
|-----------------|----------------|--|
|                 | Chirundu       | Lumbembe Clinic  |
|                 | Kafue          | Shikoswe Clinic  |
|                 | Luangwa        | Kavalamanja RHC, Chitpoe RHC, Kasinsa RHC, Mandombe RHC  |
|                 | Lusaka         | Levy Mwanawasa, UTH, Tubalange Mini Hospital, Chawama SD, Matero SD, Chilenje SD, Kanyama SD, Chipata SD, Victoria Hospital, Bauleni |
|                 | Rufunsa        | Rufunsa RHC, Chinyunyu RHC   |
| <b>Muchinga</b> | Isoka          | Lualizi and Kafwimbi RHC   |
|                 | Lavushimanda   | Red Rhino school, Muwele Market .  |
|                 | Nakonde        | Nakonde Hospital and Nakonde Urban Clinic.   |
|                 | Chama          | FTC  |
|                 | Shiwang'andu   | Lwanya RHC   |
|                 | Mpika          | Chibansa RHC   |
|                 | Kanchibiya     | Kopa Primary school, LuchembeKanchibiya resettlement scheme, Chalabesa RHC.  |
|                 | Chinsali       | Nambuluma RHC  |
|                 | Mafinga        | Mulekatembo  |
|                 | <b>Western</b> | Senanga  |
| Shangombo       |                | Shangombo Secondary School   |
|                 |                | Shangombo RHC  |
| Kaoma           |                | Kaoma Trades   |
|                 |                | Kaoma Youth Resource Centre  |
| Luampa          |                | Kahumbu Primary School   |
| Lukulu          |                | Lukulu Old Hospital  |

|                |              |  |
|----------------|--------------|--|
|                | Mitete       | Lukulu Old Hospital  |
|                | Kalabo       | Wenela RHC   |
|                | Nalolo       | Muoyo RHC  |
|                | Sioma        | Old Nangwesh Refugee Camp  |
|                | Mulobezi     | Mulobezi HAHC  |
|                | Mwandi       | Situlu Health Post   |
|                | Sesheke      | Mulimambango   |
|                | Sikongo      | Sikongo RHC  |
|                | Limulunga    | Nan'oko Health Post  |
|                | Mongu        | Mongu D Hospital, Mweeke HP  |
|                | Nkeyema      | Nkeyema Zonal Health Centre  |
| <b>Central</b> | Chitambo     | Muchinka RHC   |
|                | Mkushi       | Kasalamkanga RHC   |
|                | Serenje      | Serenje Boma School  |
|                | Iuano        | Old Mkushi Health Centre   |
|                | Kapiri       | Tazara dry port  |
|                | Kabwe        | Old Mukobeko clinic  |
|                | Chibombo     | Twalumba RHC   |
|                | Chisamba     | Malombe RHC  |
|                | Shibuyunji   | Sichobo Rural Health Centre  |
|                | Mumbwa       | Mumbwa Urban Clinic  |
|                | Itezhi tezhi | Itezhi tezhi Basic School/Uphill Scholl and and Itezhi Tezhi Boarding School |
|                | Ngabwe       | Iwonde primary school  |

|                   |                 |   |
|-------------------|-----------------|---|
| <b>Copperbelt</b> | Chililabombwe   | Council Hall                                    |
|                   | Chingola        | Kalilo Health Centre                            |
|                   | Kalulushi       | Kalulushi Urban Health Centre                   |
|                   | Kitwe           | Gamerton Clinic                                 |
|                   | Luanshya        | Chibolya Clinic                                 |
|                   | Lufwanyama      | Shimukunami Rural Health Centre                 |
|                   | Masaiti         | Masaiti District Hospital                       |
|                   | Mpongwe         | Bwembelelo Health Post                          |
|                   | Mufulira        | Mutundu RHC                                     |
|                   | Ndola           | Itawa clinic                                    |
|                   | <b>Northern</b> | Chilubi   |
| Kaputa            |                 | Kaputa RHC Kalaba RHC Kapepula HP               |
| Kasama            |                 | Lukupura Rural Centre                           |
| Lunte             |                 | Chitoshi RHC Mukupa Koama RHC Mulenga Mapesa HP |
| Lupososhi         |                 | Chungu RHC Nsombo RHC                           |
| Luwingu           |                 | Ipusikilo RHC                                   |
| Mbala             |                 | Chulungoma Urban Clinic Kaluluzi Health Post    |
| Mporokoso         |                 | Township Clinic Chiwala RHC                     |
| Mpulungu          |                 | Mpulungu Urban Clinic                           |
| Mungwi            |                 | Mungwi Baptist HC, Kayambi RHC                  |
| Nsama             |                 | NsumbuRHC                                       |
| Senga             |                 | Nsumbu RHC, Mwiluzi HP, Sumbi HP                |

