

ZAMBIA SITUATION REPORT NO. 129

Disease Outbreak: COVID-19

Response start date: 30th January, 2020

Outbreak Declared: 18th March, 2020

Report date: Tuesday 2nd February 2021

Prepared by: MOH/ZNPPI/WHO

Correspondence: ims.covid@znphi.co.zm

1. SITUATION UPDATE

This week (1st - 7th Feb)  Cases **2,016**  Deaths **31**  Recoveries **1,696**


1.1 CURRENT CASE NUMBERS (as of 09:00 hours CAT)

- In the past 24 hrs, there were **1,191 new confirmed cases, 14 deaths and 302 recoveries**.
- Cumulative number of confirmed COVID-19 cases recorded to date is **56,233** with **794 deaths (CFR=1.41%)** and **49,696 recoveries (88.38% recovered)**.
- Of the 794 total deaths among the confirmed cases, **359 have been classified as COVID-19 deaths (CFR=0.64%)** and **408 as associated deaths; 27 deaths are pending classification**. See Annex 1 for definitions
- There are currently **5,743 active cases**: of these, 464 (8.08%) are hospitalised (with 310 on Oxygen therapy and 37 in critical condition); **5,279** patients are under community management.

Global Numbers (Source: JHU)

 **103,435,830 Confirmed**

 **2,238,785 Deaths**

 **57,356,033 Recoveries**

Africa Numbers (Source: Africa CDC)

 **3,579,368 Confirmed**

 **91,524 Deaths**

 **3,074,154 Recoveries**

2. EPIDEMIOLOGICAL HIGHLIGHTS

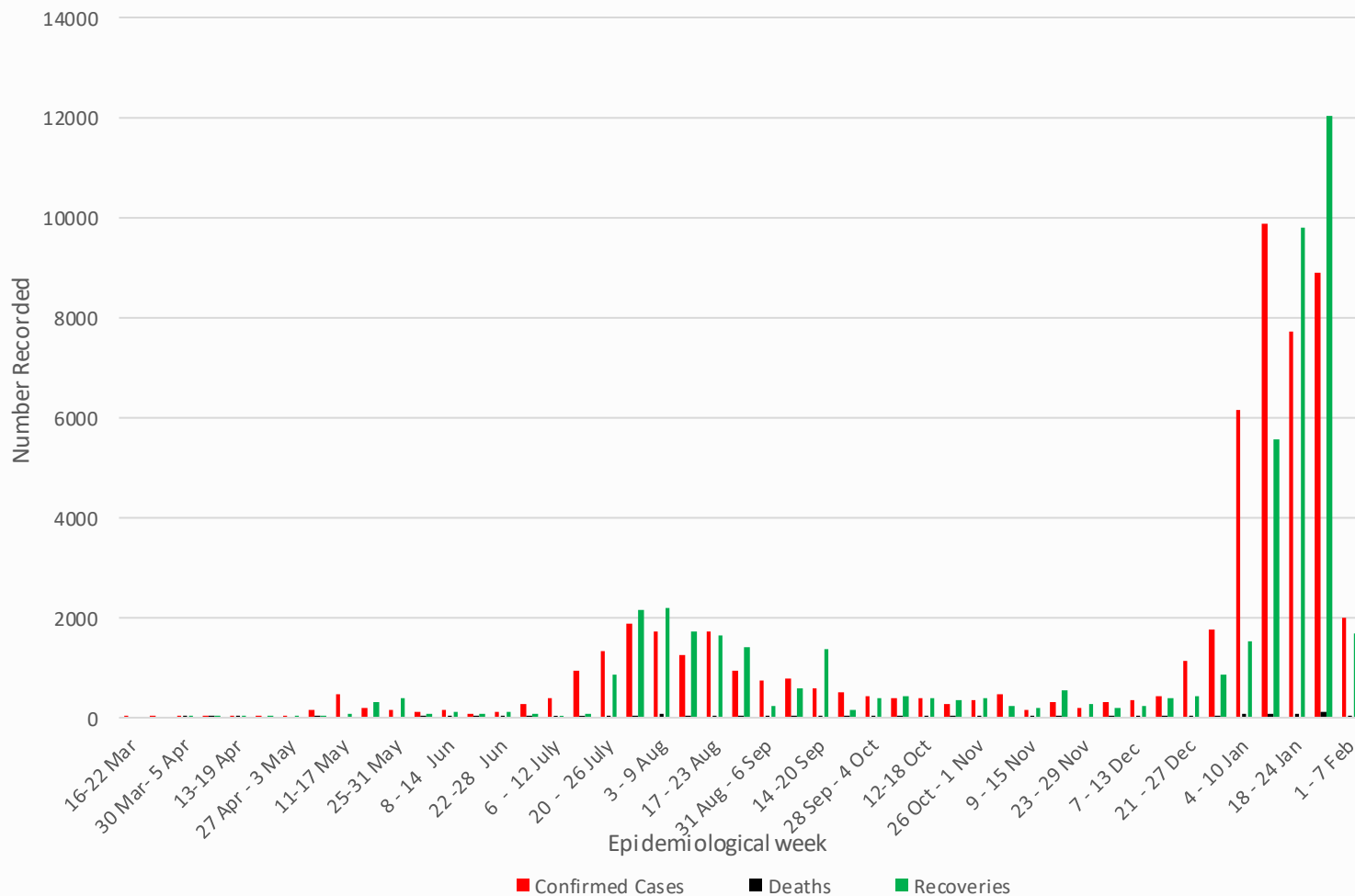


Figure 1: Weekly COVID-19 confirmed cases (N=56,233), deaths (N=794) and recoveries (N=49,696) as of 2nd February, 2021

- **Age and sex distribution:** Below is a table showing the age and sex distribution of confirmed cases and death, based on data compiled up to 20th January, 2021

Age Groups	Positive Cases (%)		Deaths (%)		CFR (%)
	Male	Female	Male	Female	
≤1 year	0.34%	0.29%	0.52%	1.29%	3.47%
>1-4 years	0.54%	0.46%	0.77%	1.29%	2.48%
5-9 years	0.85%	0.90%	0.52%	1.03%	1.06%
10-14 years	1.08%	1.39%	0.26%	0.00%	0.13%
15-19 years	1.99%	2.76%	1.29%	1.55%	0.72%
20-24 years	5.92%	7.03%	3.35%	0.77%	0.38%
25-29 years	8.12%	7.63%	4.64%	2.32%	0.53%
30-39 years	15.05%	11.42%	11.34%	6.19%	0.80%
40-49 years	11.58%	6.65%	10.05%	2.84%	0.85%
50+ years	9.26%	6.73%	26.55%	23.45%	3.77%
Total %	54.73%	45.27%	59.28%	40.72%	1.41%
Median Age (Range)	35 (1-99)	31 (1-100)	47 (1-94)	56 (1-96)	

Table 1: Age and sex distribution of confirmed cases/deaths (based on data compiled up to January, 2021)

3. ACTIONS TO DATE

3.1 CO-ORDINATION

➤ Regional/Continental level:

- Zambia hosts the Southern Africa Regional Collaborating Centre of the Africa CDC and has been coordinating the response at regional level. To date, **Southern Africa has recorded 1,708,718 confirmed cases; 49,224 deaths; and 1,497,951 recoveries.** Zambia continues to participate in AU meetings to ensure continued regional and continental trade and strategies to stop transmission of COVID-19.

➤ National Level:

- The government continues to enforce measures and interventions to control the spread of COVID-19 countrywide as outlined in the Statutory instruments **SI21 and SI22 of 2020 on COVID-19 and presidential directives.**
- A **COVID-19 contingency plan** outlining the country's COVID-19 preparedness and response activities is available and continues to be regularly updated as the outbreak evolves.

BACKGROUND

The WHO was alerted of an increase in the number of pneumonia cases of unknown cause detected in Wuhan City, Hubei Province, China. The disease now called Coronavirus Disease 2019 (COVID-19) is caused by a new coronavirus named SARS-CoV-2. The WHO declared the outbreak a PHEIC on 30th January and further declared COVID-19 a pandemic on 12th March. Zambia recorded its first two cases of COVID-19 on 18th March 2020. The first 28 cases in Zambia all had a history of travel to Europe or Asia. Three weeks into the outbreak, cases were noted among people without history of travel but in contact with confirmed cases. By mid-June 2020, cases had been reported in all ten provinces, with Western province being the last to confirm cases of COVID-19. Generalised local person-person transmission is now established throughout the country.

- Technical co-ordinating meetings are held with cooperating partners and other stakeholders. The meetings are chaired by the Director, ZNPPI
- The Incident Management System (IMS) continues to meet at ZNPPI (with a Zoom link provided to ensure social distancing) on Tuesdays and Thursdays. The IMS structure is available at **Annex 2**

3.2 SURVEILLANCE

- Active surveillance is ongoing in healthcare facilities, at community level, through contact tracing and at points of entry. See table 1 below for a breakdown of statistics reported within the last 24hrs.

Table 2: Breakdown of confirmed COVID-19 cases reported on 2nd February 2021

PROVINCE	NUMBERS BY DISTRICT		PROVINCIAL RECOVERIES
	CASES	DEATHS	
CENTRAL	Chibombo 5, Chisamba 1, Chitambo 5, Kabwe 78, Kapiri Mposhi 2, Mkushi 6, Mumbwa 1, Serenje 16, Shibuyunji 12 [TOTAL: 126]	0	13
COPPERBELT	Chilila bombwe 12, Chingola 31, Kitwe 18, Luanshya 26, Masaiti 9, Mufulira 62, Ndola 101 [TOTAL: 259]	5	139
EASTERN	Chadiza 21, Chasefu 2, Chipangali 1, Chipata 14, Katete 8, Lumezi 2, Lundazi 1, Petauke 9, Sinda 5, Vubwi 2 [TOTAL: 65]	4	10
LUAPULA	Chienge 3, Chifunabuli 8, Mansa 7, Mwansabombwe 1, Mwense 8, Nchelenge 2, Samfya 4 [TOTAL: 33]	1	11
LUSAKA	Chongwe 5, Kafue 44, Luangwa 15, Lusaka 159, Rufunsa 12 [TOTAL: 235]	2	47
MUCHINGA	Chinsali 27, Isoka 5, Mafinga 5, Mpika 54, Nakonde 6, Shiwangandu 8 [TOTAL: 105]	0	0
NORTHERN	Chilubi 8, Kasama 10, Lupososhi 2, Luwingu 9, Mbala 15, Mporokoso 3, Mpulungu 4, Nsama 4, Senga Hill 2 [TOTAL: 57]	0	0
NORTH-WESTERN	Chavuma 2, Kabompo 5, Kalumbila 37, Kasempa 14, Manyinga 7, Mufumbwe 7, Mwinilunga 2, Solwezi 77 [TOTAL: 151]	0	0
SOUTHERN	Chikankata 1, Choma 2, Gwembe 1, Kalomo 4, Kazungula 3, Livingstone 22, Mazabuka 9, Monze 8, Namwala 65, Sinazongwe 1 [TOTAL: 116]	2	82
WESTERN	Kalabo 14, Kaoma 3, Luampa 7, Mongu 13, Nkeyema 2, Senanga 4, Sioma 1 [TOTAL: 44]	0	0
TOTAL	1,191 New Cases	14 Deaths	302 Recoveries

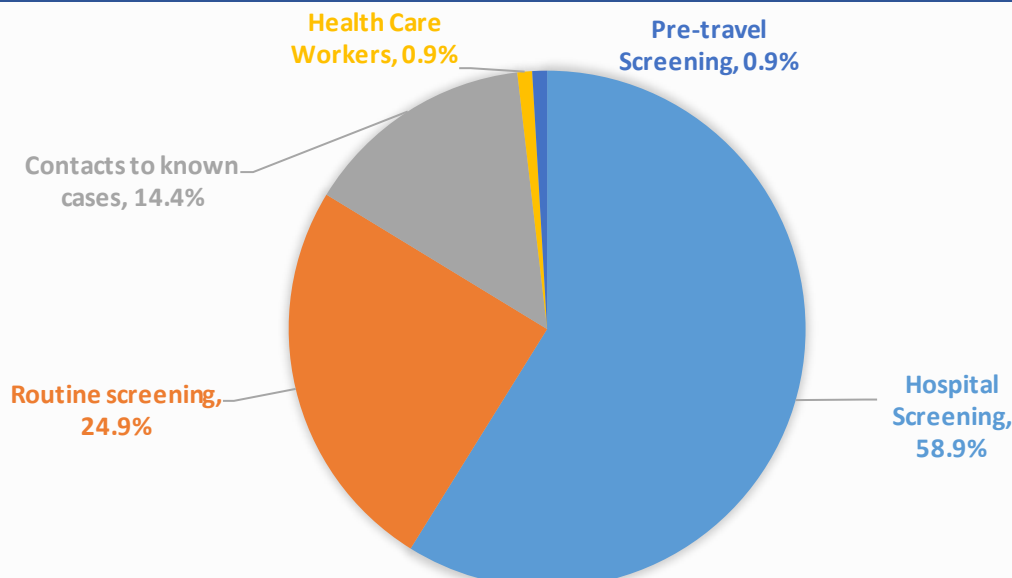


Figure 2: Categorisation of confirmed cases reported 2nd February 2021

3.4 CASE MANAGEMENT

- There are currently 464 COVID-19 patients hospitalised in facilities around the country; of these, 310 are on Oxygen therapy and 37 are in critical condition
- Fourteen (14) deaths were recorded in the last 24hrs: of these, ten (10) were classified as COVID-19 deaths, three (3) as COVID-associated and one (1) death was pending classification.
- The revised guidelines for the home management of COVID-19 cases can be accessed [here](#).
- The community management model and admission/discharge criteria for persons who test positive for COVID-19 available at **Annex 3**.

Table 3: National distribution of hospitalised COVID-19 patients by province – 2nd February 2021

PROVINCE	TOTAL # OF PATIENTS	ON OXYGEN	CRITICAL
CENTRAL	15	5	0
COPPERBELT	135	87	19
EASTERN	31	11	1
LUAPULA	13	8	1
LUSAKA	195	155	15
MUCHINGA	5	0	0
NORTHERN	16	11	1
NORTH-WESTERN	23	13	0
SOUTHERN	23	14	0
WESTERN	8	6	0
TOTAL	464	310	37

3.5 LABORATORY AND SAMPLE MANAGEMENT

- Below is a chart showing the number of tests conducted by province vs. the number of confirmed cases and percentage positivity

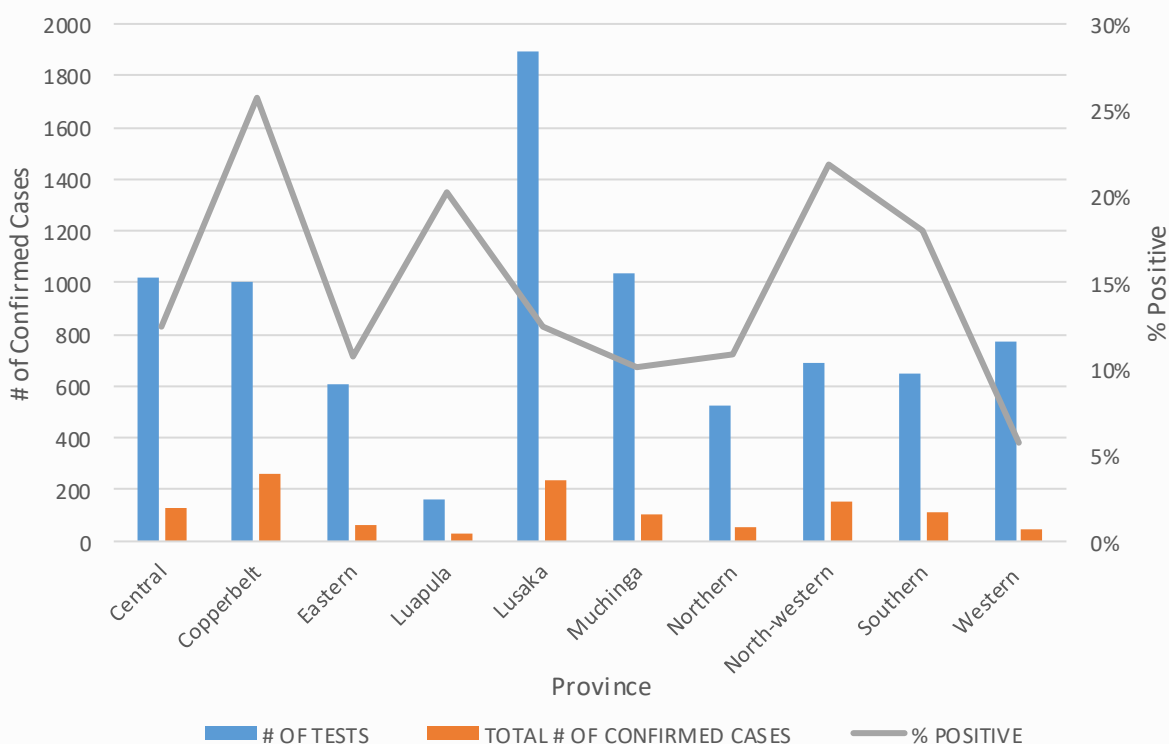


Figure 3: Number of tests by Province vs # of confirmed cases reported (2nd February 2021)

- Zambia is utilising a number of testing platforms to run COVID-19 diagnostics, including real-time Polymerase Chain Reaction (RT-PCR), Gene Xpert, Hologic Panther, RDT, and Roche Cobas 6800. Laboratory facilities are available in all 10 provinces. See **Annex 4** for a list of the currently **designated laboratories**
- The testing strategy was revised in January 2021 from mass testing to a more targeted approach. the revised strategy can be found [here](#).
- In the past week (25th - 31st January), **75,320 tests** were conducted (compared to **68,941** tests the previous week), out of which **11.79%** tested positive for SARS-CoV-2 (compared to 11.22% the previous week).
- Current week (1st – 7th February): so far, **13,955 tests** have been conducted (**14.45%** positivity)
- In the last 24hrs, **8,355 tests** were conducted, out of which **1,191** samples tested positive for SARS-CoV-2 (14.25% positive).
- To date, a total of **925,784 tests** have been conducted, with a cumulative **56,9233 confirmed positive (6.07% positivity rate)** for SARS-CoV-2. The testing coverage is **54,458 per 1,000,000 population**

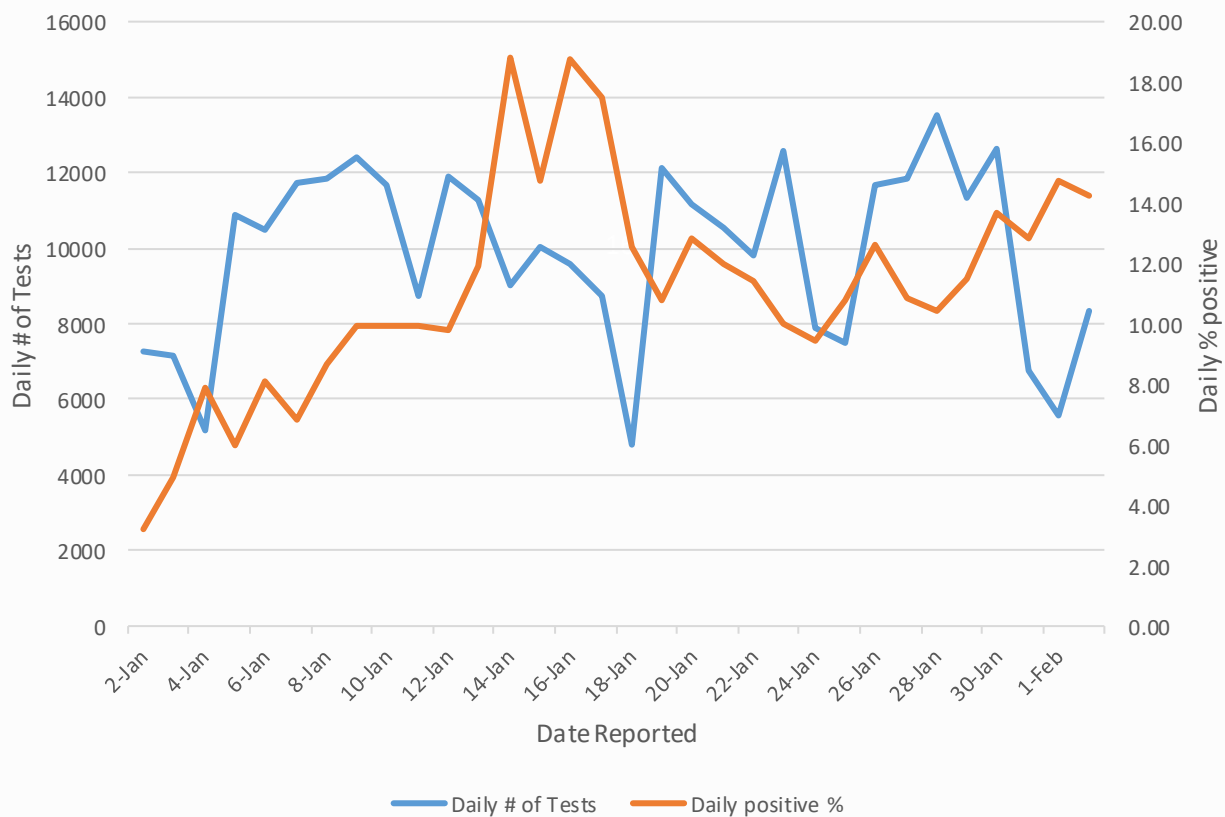


Figure 4: Daily number of tests vs % of positive results recorded (2nd January to 2nd February, 2021)

ANNEX 1: CORONAVIRUS DISEASE 2019 (COVID-19) CASE DEFINITIONS

1. Suspect case:

A. Patient with acute respiratory infection (fever and at least one sign/symptom of respiratory disease e.g. cough, shortness of breath), AND with no other aetiology that fully explains the clinical presentation AND a history of travel to or residence in a country/area or territory reporting local transmission of COVID-19 during the 14 days prior to symptom onset,

OR

B. Patient with any acute respiratory illness AND having been in contact with a confirmed or probable COVID-19 case in the last 14 days prior to symptom onset,

OR

C. Patient with severe acute respiratory infection (fever and at least one sign/symptom of respiratory disease e.g. cough, shortness of breath), AND requiring hospitalization AND with no other aetiology that fully explains the clinical presentation

2. Probable case: A suspect case for whom testing for COVID-19 is inconclusive or is tested positive using a pan-coronavirus assay and without laboratory evidence of other respiratory pathogens.

3. Confirmed case: A person with laboratory confirmation of COVID-19 infection, irrespective of clinical signs and symptoms.

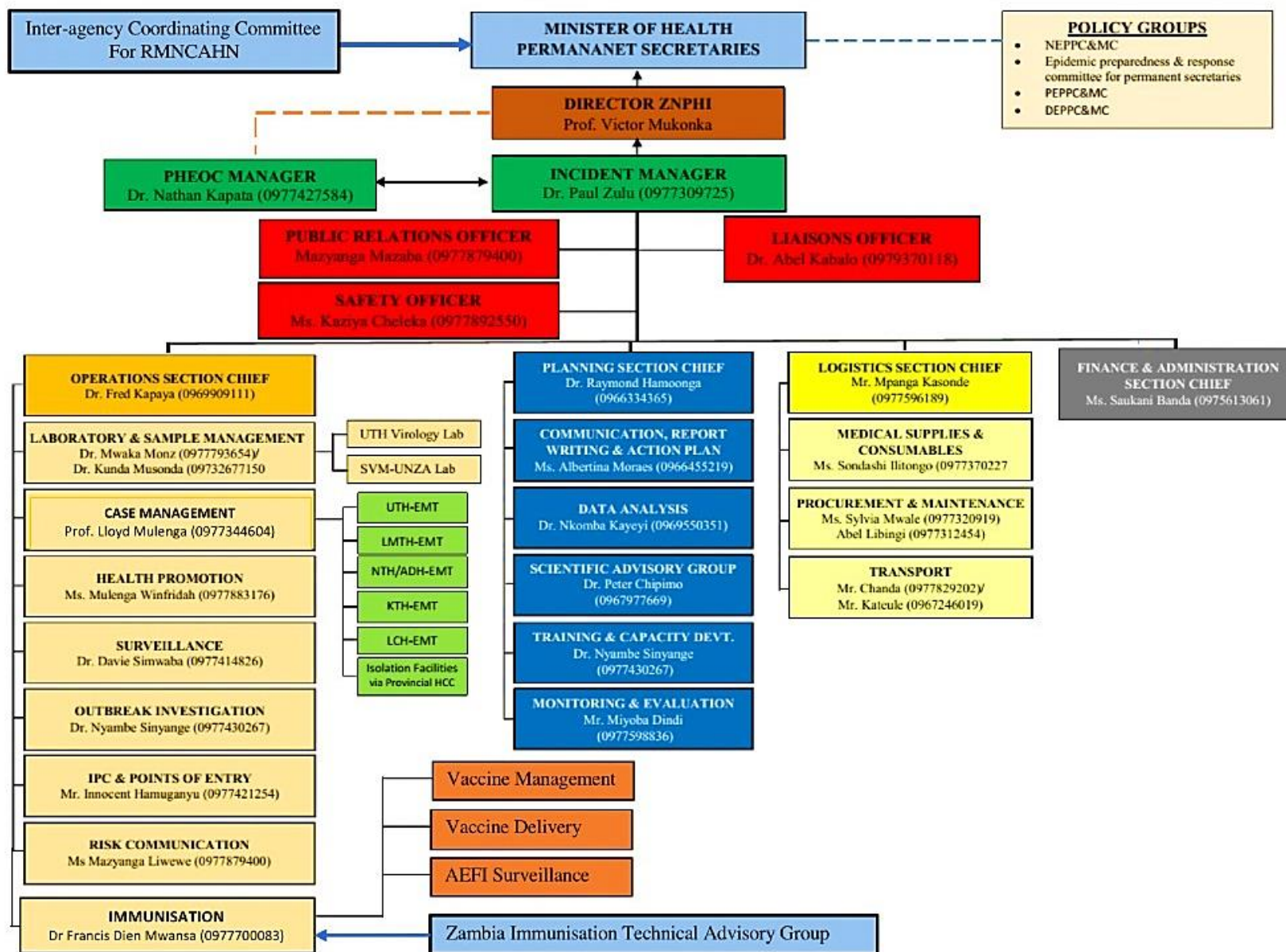
4. COVID-19 Death: COVID-19 death is defined for surveillance purposes as a death resulting from a clinically compatible illness in a probable or confirmed COVID-19 case, unless there is a clear alternative cause of death that cannot be related to COVID disease (e.g. trauma). There should be no period of complete recovery between the illness and death.

5. COVID-19 Associated Death: a death of an individual in whom COVID-19 has been detected but it is not the primary cause of death

6. COVID-19 Unclassified Death: a death of an individual in whom COVID-19 has been detected but the cause of death is yet to be classified as either a COVID-19 death or associated death following expert review

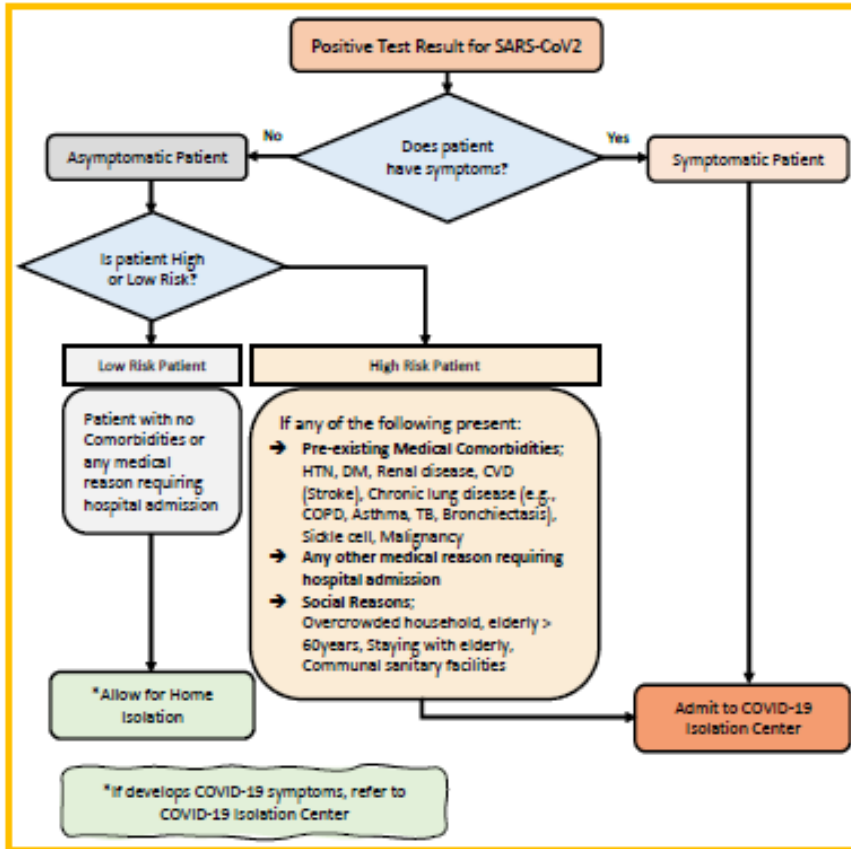
7. Contact: a person who experienced any one of the following exposures during the 2 days before and the 14 days after the onset of symptoms of a probable or confirmed case: a. Face-to-face contact with a probable or confirmed case within 1 meter and for more than 15 minutes; b. Direct physical contact with a probable or confirmed case; c. Direct care for a patient with probable or confirmed COVID-19 disease without using proper personal protective equipment; OR d. Other situations as indicated by local risk assessments.

ANNEX 2: NATIONAL LEVEL INCIDENT MANAGEMENT SYSTEM FOR THE COVID-19 PREPAREDNESS RESPONSE



ANNEX 3: CASE MANAGEMENT MODELS

Community Model for COVID-19 Response for SARS-CoV2 Positive Patients



Admission and Discharge Criteria for Covid-19 Patients

S E T T I N G	Hospital/Facility Care	Patients with Medical Conditions requiring continued Care beyond COVID-19 Recovery	Home Care
A D M I S S I O N	<ul style="list-style-type: none"> → Any symptoms for COVID-19 → Asymptomatic High-Risk patients → Presence of other Medical conditions → Where Home Isolation is not feasible 	<ul style="list-style-type: none"> → As medically indicated 	<ul style="list-style-type: none"> → Asymptomatic → No comorbidity → If home Isolation feasible
D I S C H A R G E / D E I S O L A T I O N	<ul style="list-style-type: none"> → Asymptomatic for at least 3 days plus 1 negative PCR at day 7 or beyond AND → 14 days since first Positive PCR 	<ul style="list-style-type: none"> → Two negative PCR Tests at least 24 hours apart 	<ul style="list-style-type: none"> → 1 negative PCR at day 7 or beyond AND → 14 days since first Positive PCR

ANNEX 4: LIST OF DESIGNATED COVID-19 DIAGNOSTIC LABORATORIES

PROVINCE	INSTITUTION	TESTING PLATFORM(S)
Central	Kabwe General Hospital	Gene Xpert
Copperbelt	TDRC, Ndola Arthur Davison Children's Hospital	RT-PCR Cobas 6800
Eastern	Chipata General Hospital	Gene Xpert
Luapula	Mansa General Hospital ZNS Luamfumu	Gene Xpert Gene Xpert
Lusaka	UTH, Levy (Virology, ACOE, PCOE), Lusaka UNZA – SVM, Lusaka CIDRZ, Lusaka CHAZ, Lusaka Lancet Mtendere Mission Hospital, Chirundu MedLand Hospital, Lusaka Victoria Hospital Zambia Air Force Hospital, Lusaka ZNP HRL, Lusaka	RT-PCR; Gene Xpert; Cobas 6800; Panther; RDT RT-PCR RT-PCR RT PCR RT PCR Gene Xpert RT PCR RT PCR Gene Xpert RT PCR
Muchinga	Chinsali General Hospital	Gene Xpert & PCR
Northern	Kasama General Hospital	Gene Xpert
North-western	Solwezi General Hospital, Solwezi Kansanshi Mine Hospital (Mary Begg), Solwezi	Panther Gene Xpert
Southern	Macha Research Trust Livingstone Teaching Hospital	RT-PCR Gene Xpert
Western	Lewanika General Hospital	Gene Xpert