

## ZAMBIA SITUATION REPORT NO. 17



<b>Disease Outbreak:</b> COVID-19	<b>Response start date:</b> 30 <sup>th</sup> January, 2020	<b>Outbreak Declared:</b> 18 <sup>th</sup> March, 2020
<b>Date of report:</b> 4 <sup>th</sup> April, 2020	<b>Prepared by:</b> MOH/ZNPHI/WHO	<b>Correspondence:</b> <a href="mailto:ims.covid@znphi.co.zm">ims.covid@znphi.co.zm</a>

### 1. SITUATION UPDATE

#### 1.1 CURRENT CASE NUMBERS




- As of 17:00 hours on Saturday, 4<sup>th</sup> April, 2020:
  - There were **no new confirmed cases of COVID-19** recorded in the past 24 hours.
  - The two recovered cases were discharged after a second negative test result was recorded. One suspected case (with a negative test result) was also discharged.
  - The total number of confirmed cases recorded to date is **thirty-nine (39) with one (1) death** (Refer to Annex 1).
  - All cases (suspected/confirmed) are admitted to designated isolation facilities.

#### Zambia Current Numbers

 **39 Confirmed (0 new)**  
 **1 Death (0 new)**  
 **2 Recoveries (0 new)**

#### Global Numbers

(Source: Johns Hopkins University)

 **1,181,825 Confirmed (151,197 new)**  
 **63,902 Deaths (9,927 new)**  
 **244,246 Recoveries (25,475 new)**

*\*New: in the last 24hrs*

#### 1.1 EPIDEMIOLOGICAL HIGHLIGHTS

Table 1: COVID-19 Summary surveillance and case management report as of 4<sup>th</sup> April 2020

Parameter	Number
Cumulative number of high risk persons recorded	5,666
Number of high risk persons currently observation	766
Cumulative number of high risk persons that have completed 14 days observation	1,419
Cumulative number of alerts notified & verified as non-cases	269
Number of suspected cases reported today	55
Cumulative Number of Samples Received	964
Total Number of Results Processed	910
<b>Total Number of Confirmed COVID-19 Positive Cases</b>	<b>39</b>

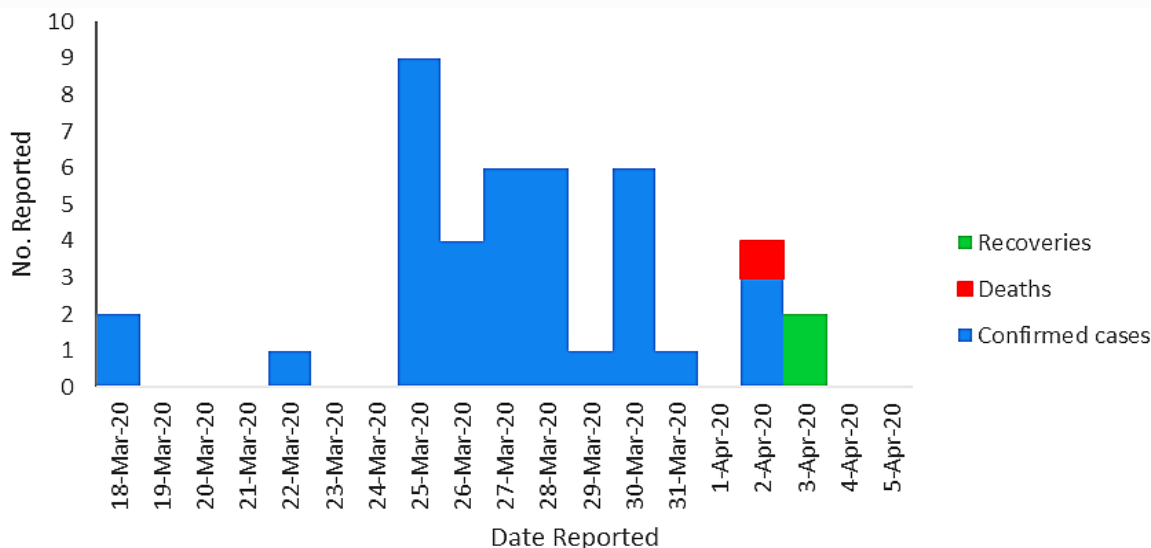


Figure 1: Epi-curve of COVID-19 confirmed cases (N=39), recoveries (N=2,) and deaths (N=1) as of 4<sup>th</sup> April 2020

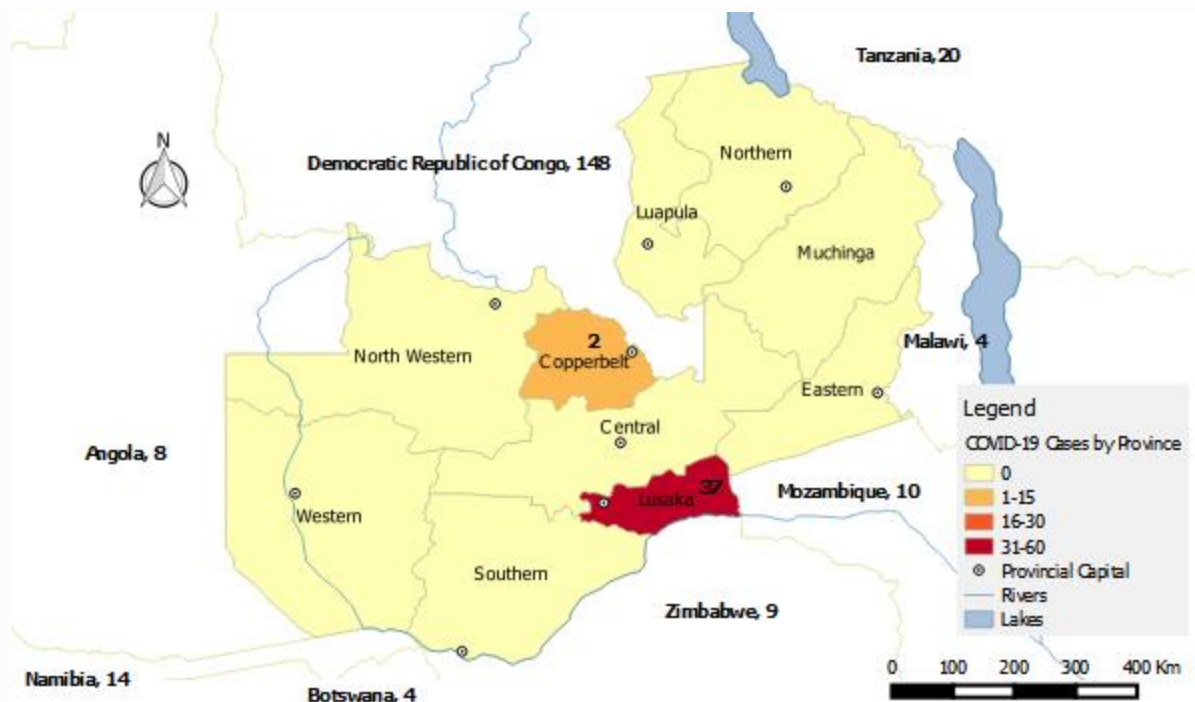


Figure 2: Map of Zambia showing confirmed COVID-19 cases by province, and confirmed cases in neighbouring countries as of 4<sup>th</sup> April 2020

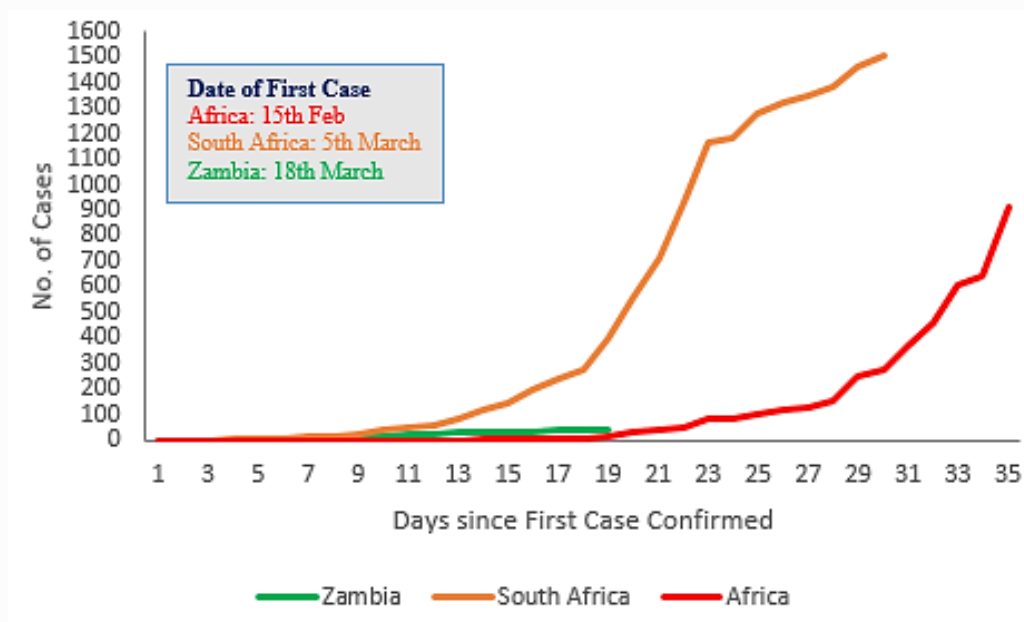


Figure 3: Cumulative trend graph comparing the number of confirmed cases in Zambia, South Africa and the whole of Africa recorded during the first 35 days (Sources: MoH Zambia, NICD South Africa, Africa CDC)

Table 2: Summary of COVID-19 cases recorded country-wide as of 4<sup>th</sup> April 2020

Reporting Province	New Cases	Total Confirmed Cases	New Deaths	Total Deaths	Transmission Classification	Days since last confirmed case discharged
Lusaka	0	37	0	0	25 Imported 12 Local	0
Copperbelt	0	2	0	0	2 Imported	0
Central	0	0	0	0	N/A	0
Southern	0	0	0	0	N/A	0
Eastern	0	0	0	0	N/A	0
Western	0	0	0	0	N/A	0
Northern	0	0	0	0	N/A	0
N/Western	0	0	0	0	N/A	0
Luapula	0	0	0	0	N/A	0
Muchinga	0	0	0	0	N/A	0
<b>Total</b>	<b>0</b>	<b>39</b>	<b>0</b>	<b>0</b>		

- **Age and Sex distribution:** Of the confirmed cases, 81% are male and 19% are female; the most affected age group is between 15-30 years old.

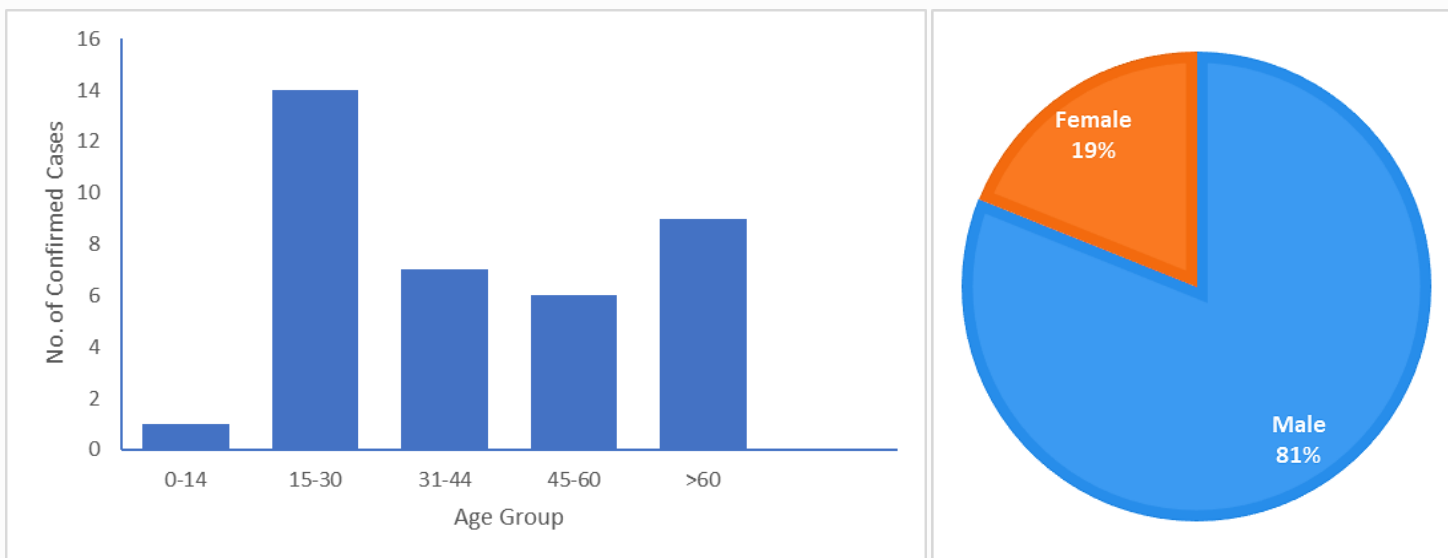


Figure 1: Age and Sex distribution of confirmed cases reported as of 4<sup>th</sup> April 2020

## 2. ACTIONS TO DATE

### 2.1 CO-ORDINATION

#### ➤ Policy Level:

- The Minister of Health, Dr. Chitalu Chilufya has been appointed to serve on the African Union Coordinating Committee on COVID-19 constituted to ensure heightened preparedness, prevention, disease intelligence and response to the outbreak at continental level.
- At SADC level, Zambia is party 11 key areas agreed on by member states as part of regional initiatives to coordinate the outbreak response including preparedness and response, surveillance, diagnostics and laboratory testing, risk communication, facilitation of the movement of goods and services, regional trade, regulatory provisions, and disaster risk management.
- Meetings of the Council of Ministers, Committee of Permanent Secretaries, and the National Epidemic Preparedness, Prevention Control and Management Committee (NEPPC&MC) have been convened since the declaration of the outbreak
- Recruitment of surge staff to support the outbreak response including 400 doctors and over 3000 para-medical staff.
- Statutory instruments **SI21 and SI22 of 2020** to facilitate the management of COVID-19 were signed into effect on 13<sup>th</sup> March 2020 and have been operationalised.

#### ➤ Technical level:

- The IMS continues to meet on Tuesdays and Thursdays. (Refer to Annex 2 for structure)
- Technical co-ordinating meetings are being held with cooperating partners and other stakeholders. The meetings are chaired by the Director, ZNP HI
- Development, printing and distribution of various SOPs in targeted areas of operation is ongoing

### 2.2 SURVEILLANCE

Surveillance is being actively conducted at POEs, health facilities, and sentinel sites. Surveillance and outbreak investigation teams continue to strengthen contact tracing, monitoring of persons under quarantine and adherence, verification and follow up of alerts and timely transport of cases to isolation facilities.

Public Health Specialists in each of the sub-districts in Lusaka serve as Incident Commanders and coordinate daily activities of field team.

An average of 5 hospitals teams per province has been trained on COVID-19 surveillance, IPC, case management and specimen collection.

- **Contact Tracing:** surveillance teams continue to actively follow up contacts of confirmed cases. All travellers into Zambia must remain in self-quarantine and will be monitored for a minimum period of 14 days; any persons who develop any symptoms of COVID-19 must notify the health authorities.
- **Screening at POEs:** screening of travellers into Zambia remains in effect. All international flights have been directed to land only at KKIA. Screening facilities are also available at the dry port along Kafue Road which services buses coming from South Africa, Zimbabwe and Botswana.
  - There has been an over 95% reduction in the number of passengers screened between the months of February and March.
  - Currently only Ethiopian and Malawian Airlines are still flying into Zambia.
  - Social distancing during screening is being observed.
- **Laboratory:** The University Teaching Hospital Virology Lab (UTHVL) (WHO-certified National Influenza Centre) is the designated primary diagnostic laboratory for COVID-19, with additional capacity at the School of Veterinary Medicine (SVM), UNZA and the Tropical Diseases Research Centre (TDRC) on the Copperbelt. A sample referral system is in place for samples being collected in other provinces.
  - Support for the labs has been received from US CDC, WHO and Africa CDC.
  - Additional testing sites are being explored at Ndola Teaching Hospital and Arthur Davison Children's Hospital on the Copperbelt as well as in Southern Province.
  - The total number of samples received to date is 964; 910 results have been processed with 39 confirmed positive for SARS-CoV-2. Summary of tests conducted to date is available in Annex1
  - The standard test turn-around time is 24 hours, but can take up to 36-48 hours where repeat or confirmatory testing is required
  - **Criteria for testing:** individuals who meet the case definition or individuals who have had contact/been exposed to a confirmed positive case and are symptomatic
- **Case Management:** All symptomatic cases (suspected, probable and confirmed) are admitted to the designated isolation facilities. Patients are only considered recovered once they record two negative re-test results. Refer to Annex 1 for detailed summary
  - **Levy Mwanawasa Hospital:** In the last 24 hours, the facility had no new admissions of suspected cases; three patients were discharged (two recovered and one suspected case with a negative test result). There are currently 35 patients admitted at the facility (34 confirmed positive; 1 suspected with results pending).
  - **Masaiti District Hospital:** There are 2 confirmed positive cases admitted at the facility; no new admissions

- **Tubalange Hospital:** there are currently no cases admitted at the facility
- **University Teaching Hospital:** There are currently no patients admitted at the facility.
- **COVID-19 Screening Facilities:** Dedicated screening structures have been set up at the UTH and Levy Mwanawasa, away from the areas of routine service delivery.
- **Isolation facilities** have also been set up in all high risk districts across the ten provinces; a detailed list is available at Annex 4

### 3. GAPS AND CHALLENGES

- **Logistics:** low stocks of sample collection supplies, PPE and other logistical supplies due to limited availability and increased demand on the global market.
- **Surveillance:** incorrect contact information being provided on surveillance forms; staff welfare; incomplete information on sample investigation forms
- **Screening at POEs:** trucks marooned at Livingstone and Kazungula while truck drivers are screened and quarantined; inadequate space for mandatory quarantine; non-observance of social distancing and restriction on public gatherings.

### 4. PRIORITY ACTIONS AND RECOMMENDATIONS

- **Surveillance:** Rapid response teams stationed at POEs have been reinforced with efficient screening services and IPC in place. Disinfection points have also set up along major highways.
- **Case management:** Re-tests to be carried out for all confirmed cases still admitted at isolation facilities in Lusaka and on the Copperbelt.
- **Logistics:** donated materials to be availed to the front line for the outbreak response and high density areas
- **Policy level:** clean-up of the central business district and communities in Lusaka

### 5. CONCLUSION

Zambia recorded no new confirmed cases of COVID-19 in the last 24 hours. The total number of confirmed cases stands at 39 with one death. All admitted cases remain stable. The Government has put in place measures to ensure the importation of essential commodities including food, medicines and fuel continues while reinforcing measures to minimise the risk of importation of COVID-19 into the country through the multi-sectoral response.

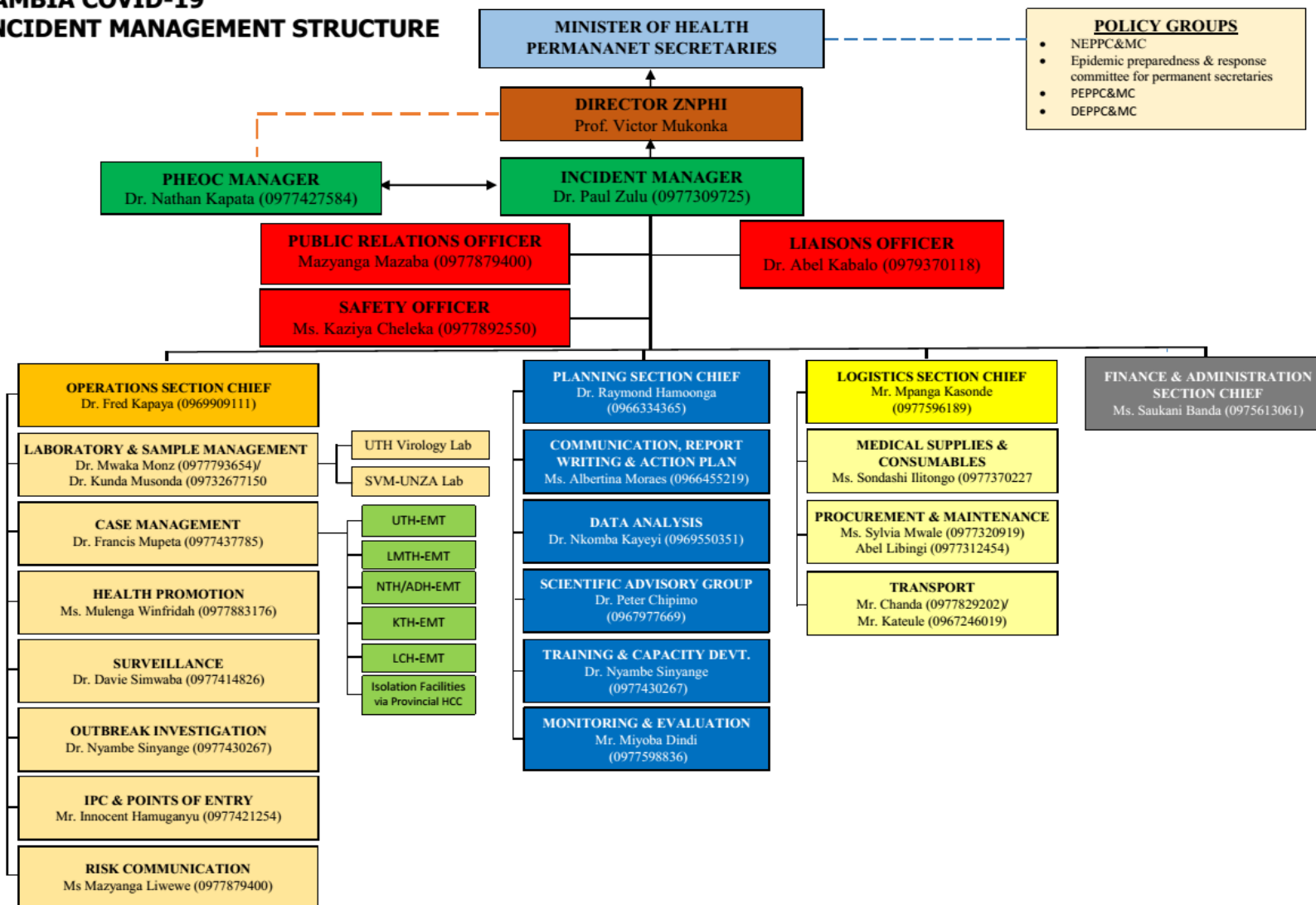
**ANNEX 1: EPIDEMIOLOGICAL DATA AS OF 17:00HRS ON 4 APRIL 2020\***

<b>Total Cases</b>	<b>Daily Total</b>			<b>Cumulative since outbreak declared</b>		
Suspected cases	<b>58</b>			<b>-</b>		
Confirmed cases	<b>0</b>			<b>39</b>		
Recovered	<b>0</b>			<b>2</b>		
<b>Diagnostics and Laboratory Testing</b>						
Samples received	<b>54</b>			<b>964</b>		
Samples with results processed	<b>54</b>			<b>910</b>		
COVID-19 positive	<b>0</b>			<b>39</b>		
COVID-19 negative	<b>54</b>			<b>871</b>		
Samples with results pending	<b>39</b>			<b>-</b>		
Number of re-tests	<b>6</b>			<b>20</b>		
<b>Statistics By Health Facility</b>	<b>Tubalange</b>	<b>Levy</b>	<b>Masaiti</b>	<b>UTH</b>	<b>Daily Total</b>	<b>Cumulative since outbreak declared</b>
<b>Admissions/Discharges</b>						
New Admissions	0	0	0	0	<b>0</b>	<b>65</b>
Currently Admitted	0	35	2	0	<b>37</b>	<b>-</b>
Discharges	0	3	0	0	<b>3</b>	<b>29</b>
Transferred in	0	0	0	0	<b>0</b>	<b>7</b>
Transferred out	0	0	0	0	<b>0</b>	<b>7</b>
<b>Deaths</b>						
Deaths among suspected cases	0	0	0	0	<b>0</b>	<b>0</b>
Deaths among lab confirmed cases	0	0	0	0	<b>0</b>	<b>1</b>

*\*Reported figures may vary due to continual data cleaning and verification as part of quality assurance*

## ANNEX 2: NATIONAL LEVEL INCIDENT MANAGEMENT SYSTEM FOR THE COVID-19 PREPAREDNESS RESPONSE

### ZAMBIA COVID-19 INCIDENT MANAGEMENT STRUCTURE





## ANNEX 3: CORONAVIRUS DISEASE 2019 (COVID-19) CASE DEFINITIONS

### Case Definitions

#### **1. Suspect case:**

A. Patient with acute respiratory infection (fever and at least one sign/symptom of respiratory disease e.g. cough, shortness of breath), AND with no other aetiology that fully explains the clinical presentation AND a history of travel to or residence in a country/area or territory reporting local transmission of COVID-19 during the 14 days prior to symptom onset,

**OR**

B. Patient with any acute respiratory illness AND having been in contact with a confirmed or probable COVID-19 case in the last 14 days prior to symptom onset,

**OR**

C. Patient with severe acute respiratory infection (fever and at least one sign/symptom of respiratory disease e.g. cough, shortness of breath), AND requiring hospitalization AND with no other aetiology that fully explains the clinical presentation

**2. Probable case:** A suspect case for whom testing for COVID-19 is inconclusive or is tested positive using a pan-coronavirus assay and without laboratory evidence of other respiratory pathogens.

**3. Confirmed case:** A person with laboratory confirmation of COVID-19 infection, irrespective of clinical signs and symptoms.

**4. Person Under Investigation:** a suspected case, irrespective of admission status, with either history of travel to an area with local transmission or worked in/attended a health care facility treating COVID-19 infections or admission to a facility for severe pneumonia of unknown aetiology

**5. Contact:** a person who experienced any one of the following exposures during the 2 days before and the 14 days after the onset of symptoms of a probable or confirmed case: a. Face-to-face contact with a probable or confirmed case within 1 meter and for more than 15 minutes; b. Direct physical contact with a probable or confirmed case; c. Direct care for a patient with probable or confirmed COVID-19 disease without using proper personal protective equipment; OR d. Other situations as indicated by local risk assessments.

## ANNEX 4: LIST OF DESIGNATED ISOLATION FACILITIES FOR THE COVID-19 OUTBREAK RESPONSE

PROVINCE	DISTRICT	ISOLATION FACILITY
<b>Eastern</b>	Chipata	Walera HP and Chipata District Hospital
	Chadiza	Sadzu RHC and Chilenga HP
	Lundazi	Lundazi New Hospital Male Ward
	Mambwe	Agriculture Field Training Centre and ADRA shade in Nsefu
	Petauke	Zuze Health Post
	Katete	Katete Livestock Market
	Nyimba	Chininkhu Health Post
	Sinda	Ukasimbe Health Post and Chinzule HP
	Vubwi	Chigwe Health Post
	Kasenengwa	Kanzutu Health Post
	Lumezi	Lumezi Hospital, Mwasemphangwe Zonal and Mwanya RHC
	Chasefu	Kanyanga Mission Hospital
	Chipangali	Mkanda RHC and Chinunda RHC
	Lusangazi	Ukwimi Trades
<b>Southern</b>	Livingstone	Mosi Oa Tunya Health centre
	Zimba	Zimba Basic school
	Siavonga	Kabbila Health Post
	Pemba	Pemba Main Clinic
	Kalomo	Mawaya Clinic
	Monze	Mulumbwa Health Post
	Mazabuka	Research clinic
	Chikankata	Nansenga Rural Health centre
	Namwala	Nchole Health Post
	Choma	Njase Clinic
	Gweembe	Munyumbwe HAHC
	Kazungula	Kazungula hospital admin block
	Sinazongwe	Sinazongwe rural health centre
	<b>Lusaka</b>	Chilanga

	Chirundu	Lumbembe Clinic
	Kafue	Shikoswe Clinic
	Luangwa	Kavalamanja RHC, Chitpoe RHC, Kasinsa RHC, Mandombe RHC
	Lusaka	Levy Mwanawasa, UTH, Tubalange Mini Hospital, Chawama SD, Matero SD, Chilenje SD, Kanyama SD, Chipata SD, Victoria Hospital, Bauleni
	Rufunsa	Rufunsa RHC, Chinyunyu RHC
<b>Muchinga</b>	Isoka	Lualizi and Kafwimbi RHC
	Lavushimanda	Red Rhino school, Muwele Market .
	Nakonde	Nakonde Hospital and Nakonde Urban Clinic.
	Chama	FTC
	Shiwang'andu	Lwanya RHC
	Mpika	Chibansa RHC
	Kanchibiya	Kopa Primary school ,LuchembeKanchibiya resettlement scheme, Chalabesa RHC.
	Chinsali	Nambuluma RHC
	Mafinga	Mulekatembo
	<b>Western</b>	Senanga
Shangombo		Shangombo Secondary School
		Shangombo RHC
Kaoma		Kaoma Trades
		Kaoma Youth Resource Centre
Luampa		Kahumbu Primary School
Lukulu		Lukulu Old Hospital

	Mitete	Lukulu Old Hospital
	Kalabo	Wenela RHC
	Nalolo	Muoyo RHC
	Sioma	Old Nangwesh Refugee Camp
	Mulobezi	Mulobezi HAHC
	Mwandi	Situlu Health Post
	Sesheke	Mulimambango
	Sikongo	Sikongo RHC
	Limulunga	Nan'oko Health Post
	Mongu	Mongu D Hospital, Mweeke HP
	Nkeyema	Nkeyema Zonal Health Centre
<b>Central</b>	Chitambo	Muchinka RHC
	Mkushi	Kasalamkanga RHC
	Serenje	Serenje Boma School
	Iuano	Old Mkushi Health Centre
	Kapiri	Tazara dry port
	Kabwe	Old Mukobeko clinic
	Chibombo	Twalumba RHC
	Chisamba	Malombe RHC
	Shibuyunji	Sichobo Rural Health Centre
	Mumbwa	Mumbwa Urban Clinic
	Itezhi tezhi	Itezhi tezhi Basic School/Uphill Scholl and and Itezhi Tezhi Boarding School
	Ngabwe	Iwonde primary school

<b>Copperbelt</b>	Chililabombwe	Council Hall	
	Chingola	Kalilo Health Centre	
	Kalulushi	Kalulushi Urban Health Centre	
	Kitwe	Garnerton Clinic	
	Luanshya	Chibolya Clinic	
	Lufwanyama	Shimukunami Rural Health Centre	
	Masaiti	Masaiti District Hospital	
	Mpongwe	Bwembelelo Health Post	
	Mufulira	Mutundu RHC	
	Ndola	Itawa clinic	
	<b>Northern</b>	Chilubi	Chaba RHC Chilubi RHC
		Kaputa	Kaputa RHC Kalaba RHC Kapepula HP
Kasama		Lukupula Rural Centre	
Lunte		Chitoshi RHC Mukupa Koama RHC Mulenga Mapesa HP	
Lupososhi		Chungu RHC Nsombo RHC	
Luwingu		Ipusikilo RHC	
Mbala		Chulungoma Urban Clinic Kaluluzi Health Post	
Mporokoso		Township Clinic Chiwala RHC	
Mpulungu		Mpulungu Urban Clinic	
Mungwi		Mungwi Baptist HC, Kayambi RHC	
Nsama		NsumbuRHC	
Senga	Nsumbu RHC, Mwiluzi HP, Sumbi HP		

