

ZAMBIA SITUATION REPORT NO. 21

Disease Outbreak: COVID-19	Response start date: 30 th January, 2020	Outbreak Declared: 18 th March, 2020
Date of report: 8 th April, 2020	Prepared by: MOH/ZNPPI/WHO	Correspondence: ims.covid@znphi.co.zm

1. SITUATION UPDATE

1.1 CURRENT CASE NUMBERS


- As of 17:00 hours on Wednesday, 8th April, 2020:
 - There were **no new confirmed cases of COVID-19, no deaths and no recoveries** recorded in the past 24 hours.
 - The total number of confirmed cases recorded to date is **thirty-nine (39), with 1 death (CFR=2.56%) and 7 recoveries** (Refer to Annex 1).
 - All cases (suspected/confirmed) are admitted to designated isolation facilities.

Zambia Statistics

 **39 Confirmed (0 new)**
 **1 Death (0 new)**
 **7 Recoveries (0 new)**

Global Statistics

(Source: Johns Hopkins University)

 **1,511,104 Confirmed (82,676 new)**
 **88,338 Deaths (6,318 new)**
 **319,064 Recoveries (18,866 new)**

*New: in the last 24hrs

1.1 EPIDEMIOLOGICAL HIGHLIGHTS

Table 1: COVID-19 Summary surveillance and case management report as of 8th April 2020

Parameter	Number
Cumulative number of high risk persons under observation	6,236
Cumulative number of high risk persons that have completed 14 days observation	1,672
Cumulative number of alerts notified & verified as non-cases	434
Number of suspected cases reported today	155
Cumulative Number of Samples Received	1,314
Total Number of Results Processed	1,222
Total Number of Confirmed COVID-19 Positive Cases	39
Total number of currently isolated positive cases	31

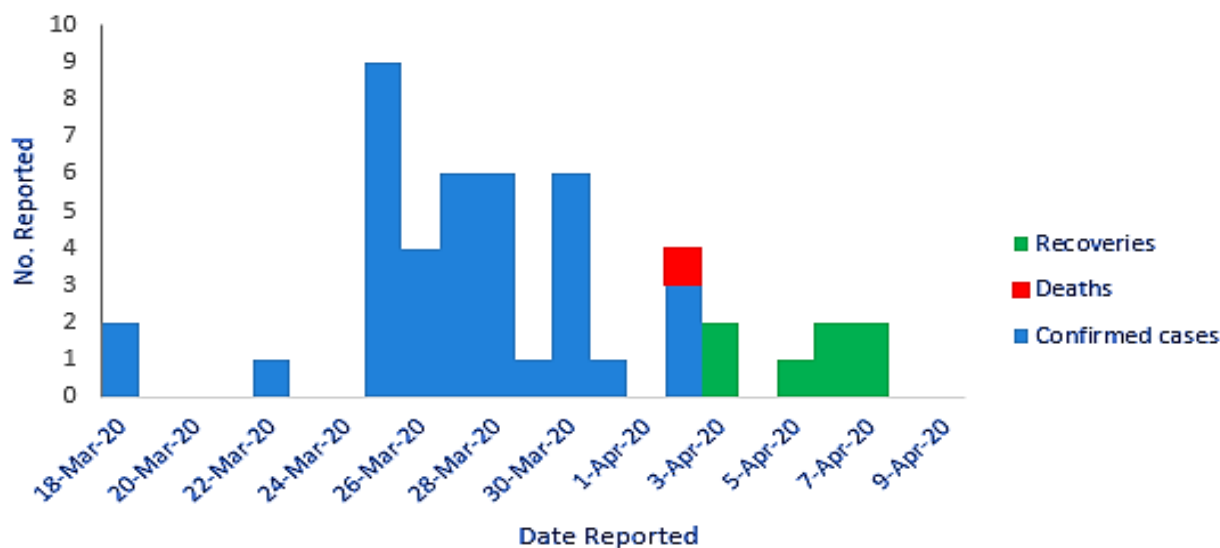


Figure 1: Epi-curve of COVID-19 confirmed cases (N=39), recoveries (N=7) and deaths (N=1) as of 8th April 2020

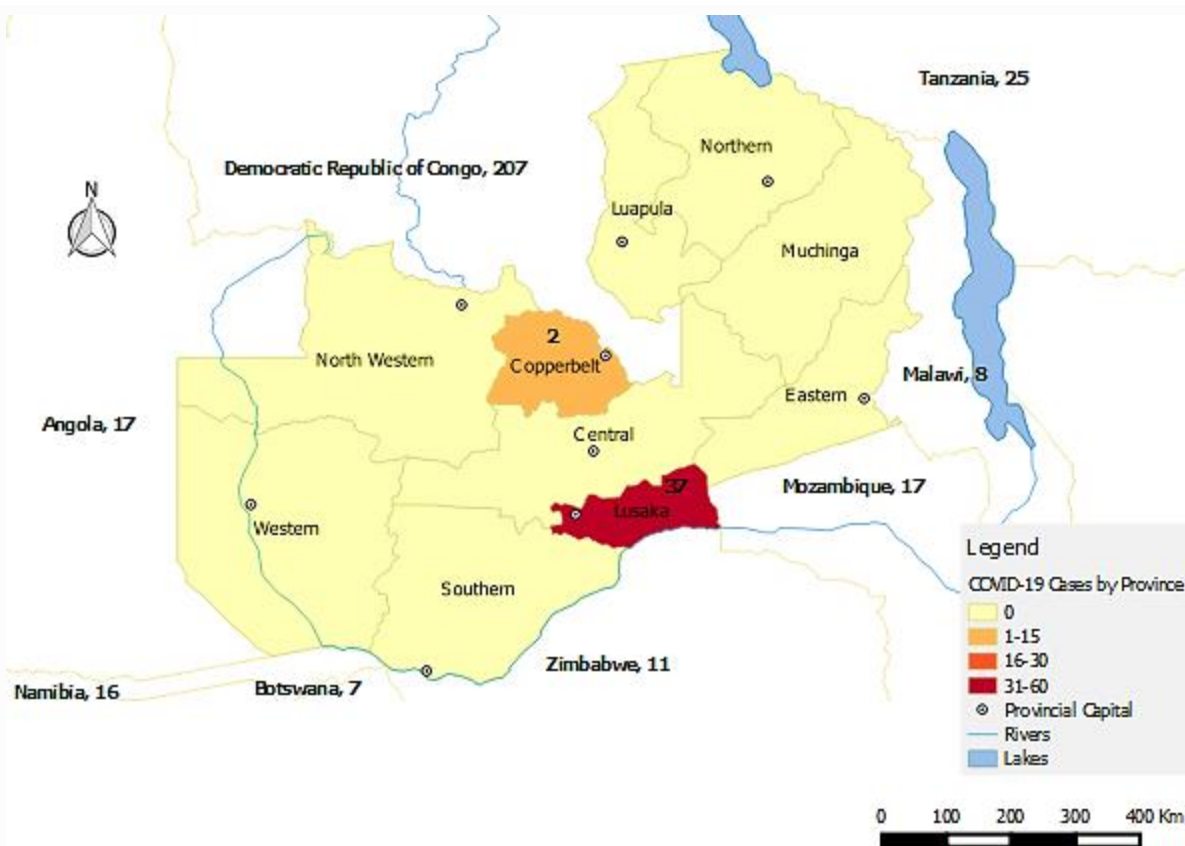


Figure 2: Map of Zambia showing confirmed COVID-19 cases by province, and confirmed cases in neighbouring countries as of 8th April 2020

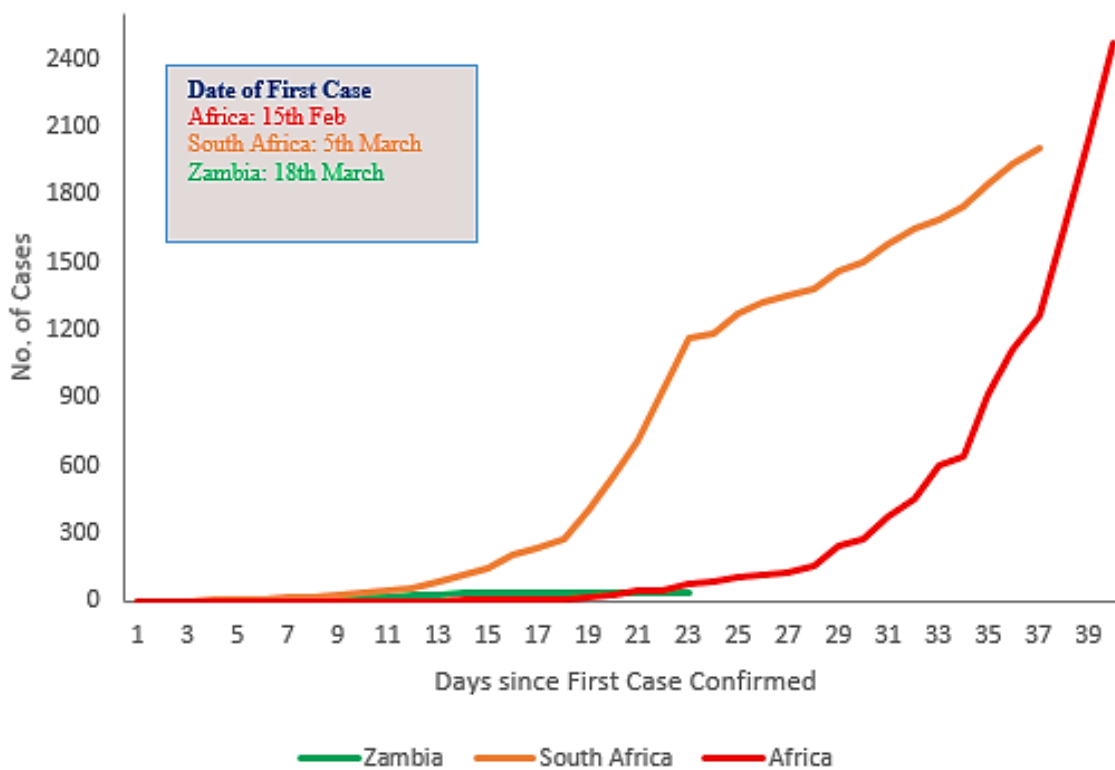


Figure 3: Cumulative trend graph comparing the number of confirmed cases in Zambia, South Africa and the whole of Africa recorded during the first 40 days (Sources: MoH Zambia, NICD South Africa, Africa CDC)

Table 2: Summary of COVID-19 cases recorded country-wide as of 8th April 2020

Reporting Province	New Cases	Total Confirmed Cases	New Deaths	Total Deaths	Transmission Classification	Days since last confirmed case reported
Lusaka	0	37	0	1	25 Imported 12 Local	6
Copperbelt	0	2	0	0	2 Imported	13
Central	0	0	0	0	N/A	0
Southern	0	0	0	0	N/A	0
Eastern	0	0	0	0	N/A	0
Western	0	0	0	0	N/A	0
Northern	0	0	0	0	N/A	0
N/Western	0	0	0	0	N/A	0
Luapula	0	0	0	0	N/A	0
Muchinga	0	0	0	0	N/A	0
Total	0	39	0	1		

- **Age and Sex distribution:** Of the confirmed cases, 81% are male and 19% are female; the most affected age group is between 15-30 years old.

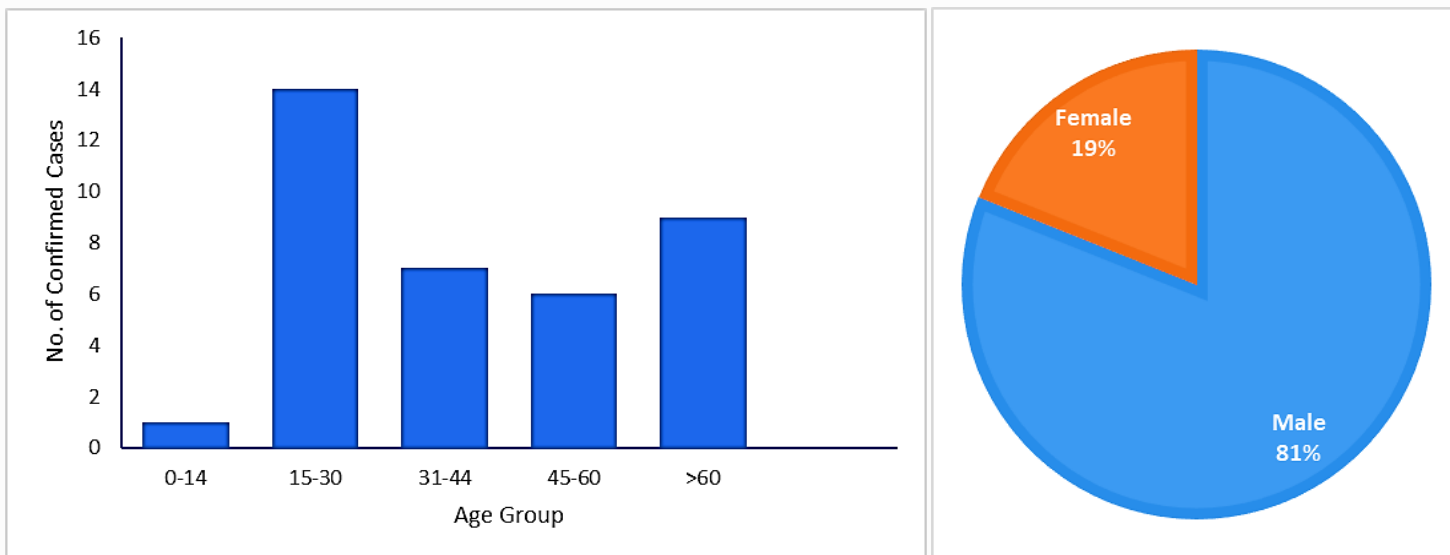


Figure 4: Age and Sex distribution of confirmed cases, April 2020

2. ACTIONS TO DATE

2.1 CO-ORDINATION

- **Regional level:** Zambia hosts the Southern Africa Regional Collaborating Centre of the Africa CDC and has been coordinating the response at regional level. To date, 1,865 confirmed cases of COVID-19 including 19 deaths have been recorded in Southern Africa.
- **Policy Level:** The government has put in place measures and interventions to control the spread of COVID-19
 - Statutory instruments No. **21** and **22 of 2020 on COVID-19** where issued in March 2020.
 - Meetings of the Committee of Ministers, Committee of Permanent Secretaries, and the National Epidemic Preparedness, Prevention Control and Management Committee (NEPPC&MC) have been convened since the declaration of the outbreak
 - Press briefings are held daily on the evolving outbreak situation in Zambia.
- **Technical level:** The ZNP HI is providing leadership and partner collaboration on the response.
 - The IMS continues to meet at the ZNP HI (with a Zoom link provided to ensure social distancing) on Tuesdays and Thursdays. (Refer to Annex 2 for structure)
 - Technical co-ordinating meetings are being held with cooperating partners and other stakeholders. The meetings are chaired by the Director, ZNP HI
 - All the response pillars under the IMS have an Incident Coordinator whose responsibility it is to map the partners and resources for the respective units to ensure no duplication of efforts and resources. Public Health Specialists in each of the sub-districts in Lusaka serve as Incident Commanders and coordinate daily activities of field team.

2.2 SURVEILLANCE

Surveillance is being actively conducted around the country at community level, points of entry (POEs), health facilities, and sentinel sites. Surveillance and outbreak investigation teams continue to strengthen contact tracing, monitoring of persons under quarantine and adherence, verification and follow up of alerts and timely transport of cases to isolation facilities. Hospitals teams in each of the 10 provinces have been trained on COVID-19 surveillance, case management, specimen collection, and Infection, Prevention and Control (IPC).

- **Contact Tracing:** surveillance teams continue to actively follow up contacts of confirmed cases. All travellers into Zambia must remain in self-quarantine and will be monitored for a minimum period of 14 days; any persons who develop symptoms of COVID-19 must notify the health authorities.

- **Sub-district teams:** five strategic teams have been constituted in each sub-district assigned to quarantine adherence, follow up of confirmed cases, contact tracing, follow up and verification of alerts, and risk communication.

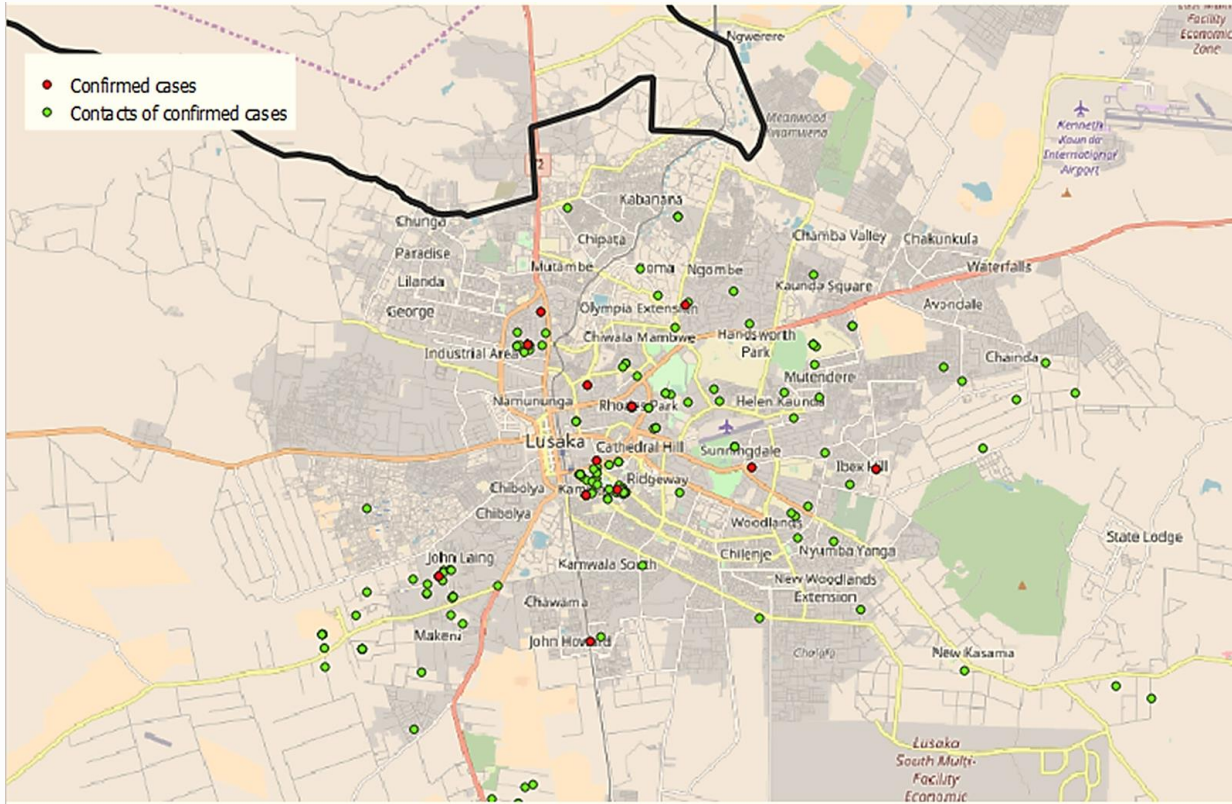


Figure 5: Locations in Lusaka district with confirmed cases of COVID-19 and traced contacts, April 2020

- **Screening at POEs:** screening of travellers into Zambia remains in effect. All international flights have been directed to land only at KKIA. Screening facilities are also available at the dry port along Kafue Road which services buses coming from South Africa, Zimbabwe and Botswana.
 - Residence has been set up at the University of Zambia for truck drivers undergoing the mandatory 14-day quarantine period. To date, 195 truck drivers have been quarantined at the facility. Of these, 147 have tested negative and will be released.
- **Laboratory:** The University Teaching Hospital Virology Lab (UTHVL) (WHO-certified National Influenza Centre) is the designated primary diagnostic laboratory for COVID-19, with additional capacity at the School of Veterinary Medicine (SVM), UNZA and the Tropical Diseases Research Centre (TDRC) on the Copperbelt. A sample referral system is in place for samples being collected in other provinces.
 - Testing of community alerts, suspects under quarantine, contacts of confirmed cases as well as re-testing of confirmed cases is ongoing.
 - 1,314 total samples have been received to date is; of these, 1,222 results have been processed with 39 confirmed positive for SARS-CoV-2. Summary of tests conducted to date is available in Annex1

- The standard test turn-around time is 24 hours, but can take up to 36-48 hours where repeat or confirmatory testing is required
- **Criteria for testing:** individuals who meet the case definition or individuals who have had contact/been exposed to a confirmed positive case and/or are symptomatic
- **Case Management:** All symptomatic cases (suspected, probable and confirmed) are admitted to the designated isolation facilities. Patients are only considered recovered once they record two negative re-test results. Refer to Annex 1 for detailed summary
 - **Levy Mwanawasa Hospital:** In the last 24 hours, the facility had no new admissions of suspected cases; no recoveries were recorded. There are currently 29 patients admitted at the facility (all confirmed positive). Three of the cases have mild pneumonia.
 - **Masaiti District Hospital:** There have been no new admissions to the facility. There are 2 confirmed positive cases still admitted in a stable condition; re-test results were still positive.
 - **Tubalange Hospital:** there are currently no cases admitted at the facility
 - **University Teaching Hospital:** There are currently no patients admitted at the facility.
 - **COVID-19 Screening Facilities:** Dedicated screening structures have been set up at the UTH and Levy Mwanawasa, away from the areas of routine service delivery.
 - **Isolation facilities** have also been set up in all high risk districts across the ten provinces; a detailed list is available at Annex 4

3. GAPS AND CHALLENGES

- **Human Resource:** high staff turnover resulting in a need to train and reorient health workers; staff welfare (responders and field teams); additional numbers of staff still required for both field and clinical teams
- **Surveillance:** incorrect contact information being provided on surveillance forms; some persons under the 14-day quarantine and monitoring do not answer calls making it difficult to get updates on their health status; non-observance of quarantine and restriction on public gatherings; incomplete information on sample investigation forms
- **Logistics:** low stocks of sample collection supplies, PPE and other logistical supplies due to limited availability and increased demand on the global market.

4. PRIORITY ACTIONS AND RECOMMENDATIONS

- **Logistics:** actualise pledges made towards the response and avail contingency list to partners; regularly updated partner mapping.
- **Surveillance:** Training and reorientation of response staff; continued community engagement and risk communication

5. CONCLUSION

In the last 24 hours, Zambia did not record any new confirmed cases of COVID-19. This marks the sixth consecutive day with no new cases reported. The cumulative number of confirmed cases stands at 39 with one death and seven recoveries. The Ministry of Health in collaboration other line Ministries and partners continue to mount a strategic and coordinated response to the COVID-19 outbreak. Surveillance, diagnostic services as well as services at POEs will continue to be strengthened.

ANNEX 1: EPIDEMIOLOGICAL DATA AS OF 17:00HRS ON 8th APRIL 2020*

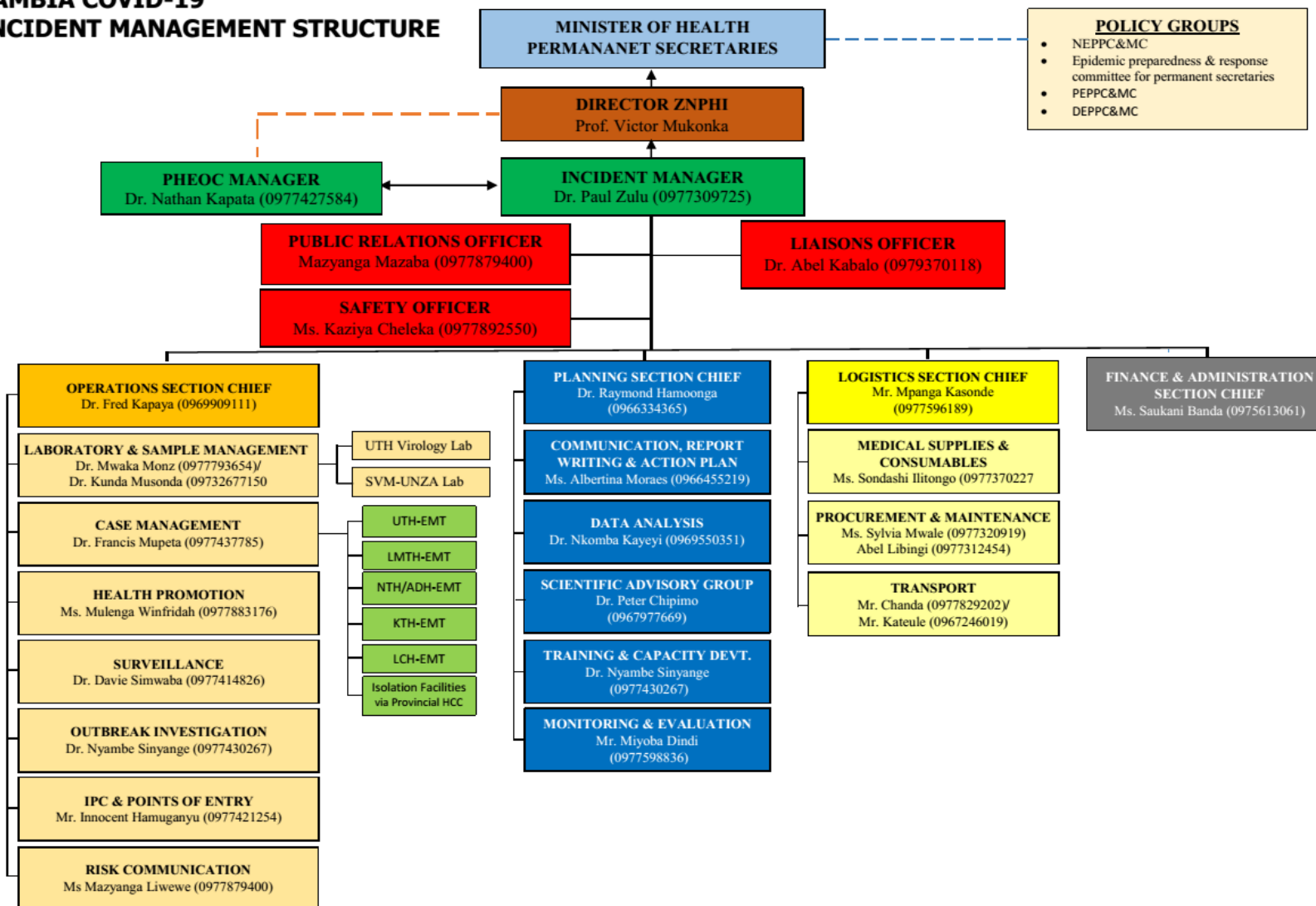
Total Cases	Daily Total			Cumulative since outbreak declared		
Suspected cases	155			-		
Confirmed cases	0			39		
Recovered	0			7		
Diagnostics and Laboratory Testing						
Samples received**	92			1314		
Samples with results processed	135			1222		
COVID-19 positive	0			39		
COVID-19 negative	135			1183		
Samples with results pending	92			-		
Statistics By Health Facility	Tubalange	Levy	Masaiti	UTH	Daily Total	Cumulative since outbreak declared
Admissions/Discharges						
New Admissions	0	0	0	0	0	65
Currently Admitted	0	29	2	0	31	-
Discharges	0	2	0	0	2	33
Transferred in	0	0	0	0	0	7
Transferred out	0	0	0	0	0	7
Deaths						
Deaths among suspected cases	0	0	0	0	0	0
Deaths among lab confirmed cases	0	0	0	0	0	1

*Reported figures may vary due to continual data cleaning and verification as part of quality assurance

**Includes samples for re-test of confirmed positive cases

ANNEX 2: NATIONAL LEVEL INCIDENT MANAGEMENT SYSTEM FOR THE COVID-19 PREPAREDNESS RESPONSE

ZAMBIA COVID-19 INCIDENT MANAGEMENT STRUCTURE



ANNEX 3: CORONAVIRUS DISEASE 2019 (COVID-19) CASE DEFINITIONS

Case Definitions

1. Suspect case:

A. Patient with acute respiratory infection (fever and at least one sign/symptom of respiratory disease e.g. cough, shortness of breath), AND with no other aetiology that fully explains the clinical presentation AND a history of travel to or residence in a country/area or territory reporting local transmission of COVID-19 during the 14 days prior to symptom onset,

OR

B. Patient with any acute respiratory illness AND having been in contact with a confirmed or probable COVID-19 case in the last 14 days prior to symptom onset,

OR

C. Patient with severe acute respiratory infection (fever and at least one sign/symptom of respiratory disease e.g. cough, shortness of breath), AND requiring hospitalization AND with no other aetiology that fully explains the clinical presentation

2. Probable case: A suspect case for whom testing for COVID-19 is inconclusive or is tested positive using a pan-coronavirus assay and without laboratory evidence of other respiratory pathogens.

3. Confirmed case: A person with laboratory confirmation of COVID-19 infection, irrespective of clinical signs and symptoms.

4. Person Under Investigation: a suspected case, irrespective of admission status, with either history of travel to an area with local transmission or worked in/attended a health care facility treating COVID-19 infections or admission to a facility for severe pneumonia of unknown aetiology

5. Contact: a person who experienced any one of the following exposures during the 2 days before and the 14 days after the onset of symptoms of a probable or confirmed case: a. Face-to-face contact with a probable or confirmed case within 1 meter and for more than 15 minutes; b. Direct physical contact with a probable or confirmed case; c. Direct care for a patient with probable or confirmed COVID-19 disease without using proper personal protective equipment; OR d. Other situations as indicated by local risk assessments.

ANNEX 4: LIST OF DESIGNATED ISOLATION FACILITIES FOR THE COVID-19 OUTBREAK RESPONSE

PROVINCE	DISTRICT	ISOLATION FACILITY
Eastern	Chipata	Walera HP and Chipata District Hospital
	Chadiza	Sadzu RHC and Chilenga HP
	Lundazi	Lundazi New Hospital Male Ward
	Mambwe	Agriculture Field Training Centre and ADRA shade in Nsefu
	Petauke	Zuze Health Post
	Katete	Katete Livestock Market
	Nyimba	Chininkhu Health Post
	Sinda	Ukasimbe Health Post and Chinzule HP
	Vubwi	Chigwe Health Post
	Kasenengwa	Kanzutu Health Post
	Lumezi	Lumezi Hospital, Mwasemphangwe Zonal and Mwanya RHC
	Chasefu	Kanyanga Mission Hospital
	Chipangali	Mkanda RHC and Chinunda RHC
	Lusangazi	Ukwimi Trades
Southern	Livingstone	Mosi Oa Tunya Health centre
	Zimba	Zimba Basic school
	Siavonga	Kabbila Health Post
	Pemba	Pemba Main Clinic
	Kalomo	Mawaya Clinic
	Monze	Mulumbwa Health Post
	Mazabuka	Research clinic
	Chikankata	Nansenga Rural Health centre
	Namwala	Nchole Health Post
	Choma	Njase Clinic
	Gweembe	Munyumbwe HAHC
	Kazungula	Kazungula hospital admin block
	Sinazongwe	Sinazongwe rural health centre
	Lusaka	Chilanga

	Chirundu	Lumbembe Clinic
	Kafue	Shikoswe Clinic
	Luangwa	Kavalamanja RHC, Chitpoe RHC, Kasinsa RHC, Mandombe RHC
	Lusaka	Levy Mwanawasa, UTH, Tubalange Mini Hospital, Chawama SD, Matero SD, Chilenje SD, Kanyama SD, Chipata SD, Victoria Hospital, Bauleni
	Rufunsa	Rufunsa RHC, Chinyunyu RHC
Muchinga	Isoka	Lualizi and Kafwimbi RHC
	Lavushimanda	Red Rhino school, Muwele Market .
	Nakonde	Nakonde Hospital and Nakonde Urban Clinic.
	Chama	FTC
	Shiwang'andu	Lwanya RHC
	Mpika	Chibansa RHC
	Kanchibiya	Kopa Primary school ,LuchembeKanchibiya resettlement scheme,Chalabesa RHC.
	Chinsali	Nambuluma RHC
	Mafinga	Mulekatembo
	Western	Senanga
Shangombo		Shangombo Secondary School
		Shangombo RHC
Kaoma		Kaoma Trades
		Kaoma Youth Resource Centre
Luampa		Kahumbu Primary School
Lukulu	Lukulu Old Hospital	

	Mitete	Lukulu Old Hospital
	Kalabo	Wenela RHC
	Nalolo	Muoyo RHC
	Sioma	Old Nangwesh Refugee Camp
	Mulobezi	Mulobezi HAHC
	Mwandi	Situlu Health Post
	Sesheke	Mulimambango
	Sikongo	Sikongo RHC
	Limulunga	Nan'oko Health Post
	Mongu	Mongu D Hospital, Mweeke HP
	Nkeyema	Nkeyema Zonal Health Centre
Central	Chitambo	Muchinka RHC
	Mkushi	Kasalamkanga RHC
	Serenje	Serenje Boma School
	Iuano	Old Mkushi Health Centre
	Kapiri	Tazara dry port
	Kabwe	Old Mukobeko clinic
	Chibombo	Twalumba RHC
	Chisamba	Malombe RHC
	Shibuyunji	Sichobo Rural Health Centre
	Mumbwa	Mumbwa Urban Clinic
	Itezhi tezhi	Itezhi tezhi Basic School/Uphill Scholl and and Itezhi Tezhi Boarding School
	Ngabwe	Iwonde primary school

Copperbelt	Chililabombwe	Council Hall
	Chingola	Kalilo Health Centre
	Kalulushi	Kalulushi Urban Health Centre
	Kitwe	Garnerton Clinic
	Luanshya	Chibolya Clinic
	Lufwanyama	Shimukunami Rural Health Centre
	Masaiti	Masaiti District Hospital
	Mpongwe	Bwembelelo Health Post
	Mufulira	Mutundu RHC
	Ndola	Itawa clinic
	Northern	Chilubi
Kaputa		Kaputa RHC Kalaba RHC Kapepula HP
Kasama		Lukupu Rural Centre
Lunte		Chitoshi RHC Mukupa Koama RHC Mulenga Mapesa HP
Lupososhi		Chungu RHC Nsombo RHC
Luwingu		Ipusikilo RHC
Mbala		Chulungoma Urban Clinic Kaluluzi Health Post
Mporokoso		Township Clinic Chiwala RHC
Mpulungu		Mpulungu Urban Clinic
Mungwi		Mungwi Baptist HC, Kayambi RHC
Nsama		NsumbuRHC
Senga	Nsumbu RHC, Mwiluzi HP, Sumbi HP	

