

ZAMBIA COVID-19 SITUATION REPORT NO. 298

Disease Pandemic: COVID-19

Response start date: 30th January, 2020

Outbreak Declared: 18th March, 2020

Report date: Monday 19th July, 2021

Prepared by: MOH/ZNP HI/WHO

Correspondence: ims.covid@znphi.co.zm

1. SITUATION UPDATE *This week (19th – 25th July)* **Cases 630** **Deaths 29** **Recoveries 1,621**

1.1 CURRENT NUMBERS (as of 09:00 hours CAT)




➤ In the last 24hrs, we recorded **630 new cases** out of 3,174 tests (20% positivity), **29 deaths and 1,621 recoveries**

- The cumulative number of confirmed COVID-19 cases recorded to date is **186,279** with **3,113 deaths (CFR=1.7%)** and **173,320 recoveries (93% recovered)**. Of the total deaths, **2,315** have been classified as **COVID-19 deaths (CFR=1.2%)** and **798** as **associated deaths**. See [Annex 1](#) for definitions.

- Currently: there are **9,846 active cases**: of these, 9,059 (92%) under community management and 787 (8%) hospitalised

Global Numbers

(Source: Worldometre)

 **191,547,279 Confirmed**
 **4,109,825 Deaths (2.2% CFR)**
 **174,385,798 Recoveries**

Africa Numbers

(Source: Africa CDC)

 **6,243,003 Confirmed**
 **158,078 Deaths (2.6% CFR)**
 **5,442,182 Recoveries**

2. EPIDEMIOLOGICAL HIGHLIGHTS

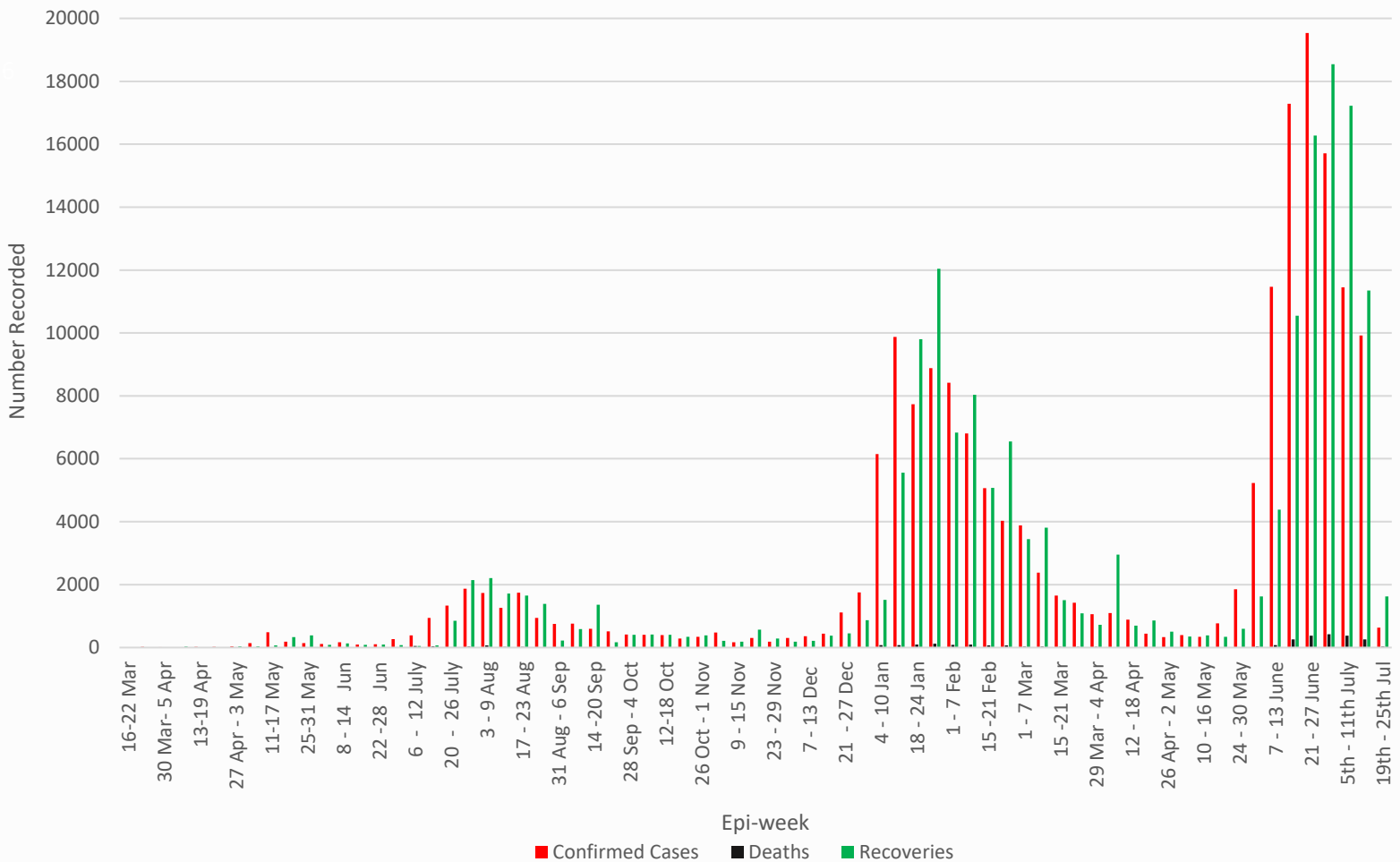


Figure 1: Epicurve of COVID-19 confirmed cases, deaths and recoveries by week as of 19th July, 2021

3. ACTIONS TO DATE

3.1 CO-ORDINATION

➤ Regional/Continental level:

- Zambia continues to participate in AU meetings to ensure continued regional and continental trade and strategies to stop transmission of COVID-19. Zambia also hosts the Southern Africa Regional Collaborating Centre of the Africa CDC and has been coordinating the response at regional level. To date, Southern Africa has recorded 2,980,595 cases; 80,844 deaths; and 2,609,512 recoveries. Detailed updates on the COVID-19 statistics can be accessed on the [Africa CDC website](#), and the Vaccination Dashboard can be accessed [here](#)

➤ National Level:

- Government is implementing a **nine-pronged strategy** in response to the COVID-19 outbreak: Surveillance and case finding; **Case management; Infection prevention and control; Risk communication and community engagement; Laboratory diagnosis; Logistics and supply chain management; Appropriate competent and adequate workforce; Routine essential health services; and Vaccination.**
 - The government continues to enforce measures and interventions to control the spread of COVID-19 countrywide as outlined in the Statutory instruments **SI21 and SI22 of 2020 on COVID-19 and presidential directives.**
 - The **COVID-19 contingency plan** outlining the country's COVID-19 preparedness and response activities underwent revision in the first week of April, 2021 and was approved by Cabinet.
 - Technical co-ordinating meetings are held with cooperating partners and other stakeholders. The meetings are chaired by the Director General, ZNPFI
- The **Incident Management System (IMS)** continues to meet at ZNPFI (with a Zoom link provided to ensure social distancing) on Tuesdays and Thursdays. The IMS structure is available at **Annex 2**
- An update on the enhanced measures to prevent and mitigate the spread of COVID-19 in Zambia was issued to the public on Friday 16th July 2021 (see **Annex 3**)

BACKGROUND

The WHO was alerted of an increase in the number of pneumonia cases of unknown cause detected in Wuhan City, Hubei Province, China. The disease now called Coronavirus Disease 2019 (COVID-19) is caused by a new coronavirus named SARS-CoV-2. The WHO declared the outbreak a PHEIC on 30th January and further declared COVID-19 a pandemic on 12th March. Zambia recorded its first two cases of COVID-19 on 18th March 2020. The first 28 cases in Zambia all had a history of travel to Europe or Asia. Three weeks into the outbreak, cases were noted among people without history of travel but in contact with confirmed cases. By mid-June 2020, cases had been reported in all ten provinces, with Western province being the last to confirm cases of COVID-19. Generalised local person-person transmission is now established throughout the country. To date, Zambia has had two waves of the pandemic, with a third wave currently being experienced.

3.2 SURVEILLANCE

- Active surveillance is ongoing in healthcare facilities, at community level, through contact tracing and at points of entry. The surveillance report for new cases, deaths and recoveries from the last 24 hours broken down by province in Table 1 below.

3.3 CLINICAL CASE MANAGEMENT

- All confirmed COVID-19 cases are managed either under facility or community models; the community management model and admission/discharge criteria for persons who test positive for COVID-19 available at **Annex 4**. The revised guidelines for the home management of COVID-19 cases can be accessed [here](#).
 - In the last 24 hours, there were 96 newly admitted COVID-19 patients.
 - There are currently 787 COVID-19 patients hospitalised in facilities around the country; of these, 583 are on Oxygen therapy and 134 are in critical condition

Table 1: Breakdown of surveillance and case management statistics reported in the last 24hrs by province

PROVINCE	NUMBERS BY PROVINCE				
	NEW CASES	DEATHS	RECOVERIES	ACTIVE	ADMITTED
CENTRAL	60	3	75	633	24
COPPERBELT	93	5	267	1,130	197
EASTERN	40	7	231	1,270	80
LUAPULA	0	0	114	702	23
LUSAKA	210	4	347	1,671	259
MUCHINGA	39	2	87	795	17
NORTHERN	47	1	143	967	29
NORTH-WESTERN	35	0	88	901	51
SOUTHERN	36	6	186	716	66
WESTERN	70	1	83	1,061	41
TOTAL	630 New Cases	29 Deaths	1,621 Recoveries	9,846 Active	787 Admitted

3.4 COVID-19 VACCINATION PROGRAMME

- The vaccination programme was officially launched on Wednesday 14th April, 2021 by the Hon. Minister of Health, Dr. Jonas Chanda, following the receipt of 228,000 doses of AstraZeneca under the COVAX facility.
- An additional 228,000 doses of AstraZeneca donated by the Government of France through the COVAX facility were received in the country on 5th July, 2021.
 - Administration of Dose 2 of the AstraZeneca vaccine commenced on **Wednesday, 23rd June 2021**.
 - Administration of Dose 1 resumed on Friday 9th July, 2021, following an earlier decision to halt the programme
 - In the last 24 hours, we entered the following records: **4,948 Dose 1 and 1,378 Dose 2** AstraZeneca

- Following data cleaning and consolidation, cumulatively to date, 217,521 Dose 1 and 59,192 Dose 2 AstraZeneca (27% of dose 1) have been administered, and an additional 6,899 Dose 1 and 6,336 Dose 2 Sinopharm (92% of dose 1) were administered in Lusaka and on the Copperbelt

➤ The distribution of the cumulative AstraZeneca dose 1 and dose 2 vaccinations by province is as follows:

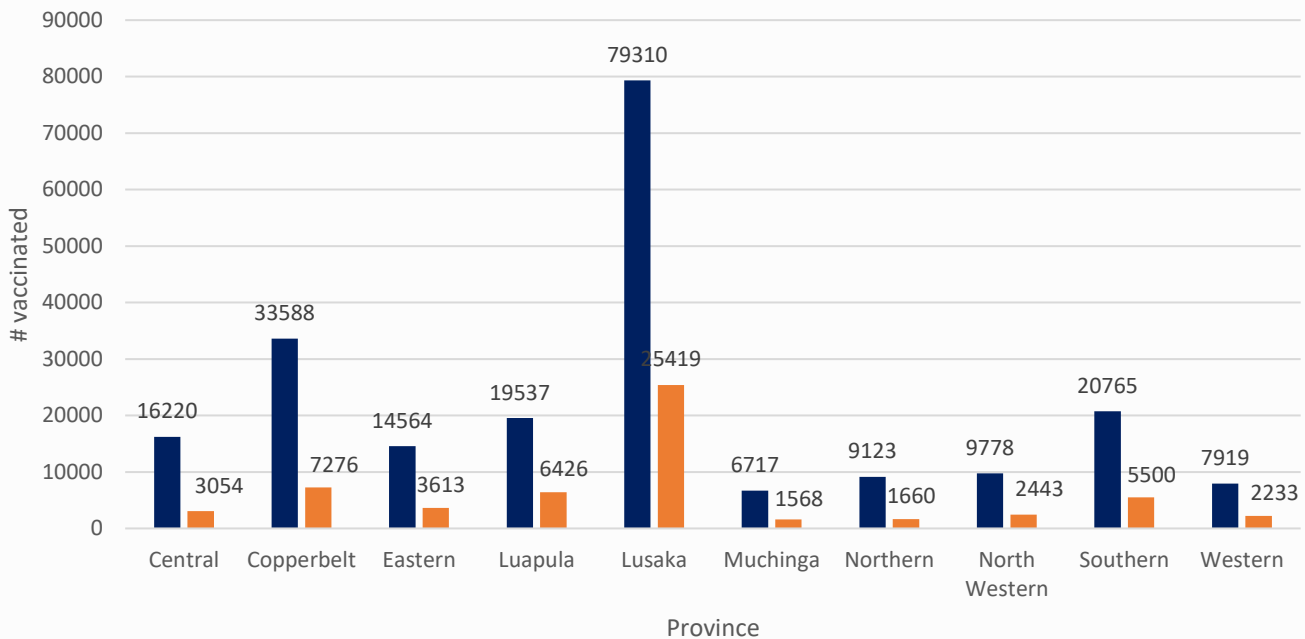


Figure 2: Distribution of cumulative vaccinations AstraZeneca Dose 1 (N=217,521) versus Dose 2 (N=59,192) by province

3.5 LABORATORY AND SAMPLE MANAGEMENT

- Zambia is utilising a number of testing platforms, including real-time Polymerase Chain Reaction (RT-PCR), Gene Xpert, Hologic Panther, and Roche Cobas 6800, as well as Standard Q and Panbio Rapid Diagnostic Tests. See **Annex 5** for a list of the currently **designated diagnostic laboratories**. A list of testing centres can be found here: <https://arcg.is/15rqeP> and the revised testing strategy can be found [here](#).
- **Previous week analysis (12th - 18th July): 51,151 tests** were conducted in the previous week (**19% tested positive** for SARS-CoV-2) compared to **49,130 tests** the week before last (**23% positivity**).
- **Current week analysis (19th - 25th July):** In the last 24 hrs, 3,174 tests were conducted (20% positivity)
- To date, a cumulative **2,017,643 tests** have been conducted, with a cumulative **186,279 confirmed positive (9% overall positivity)** for SARS-CoV-2.
- The testing coverage is **118,685 per 1,000,000 population**

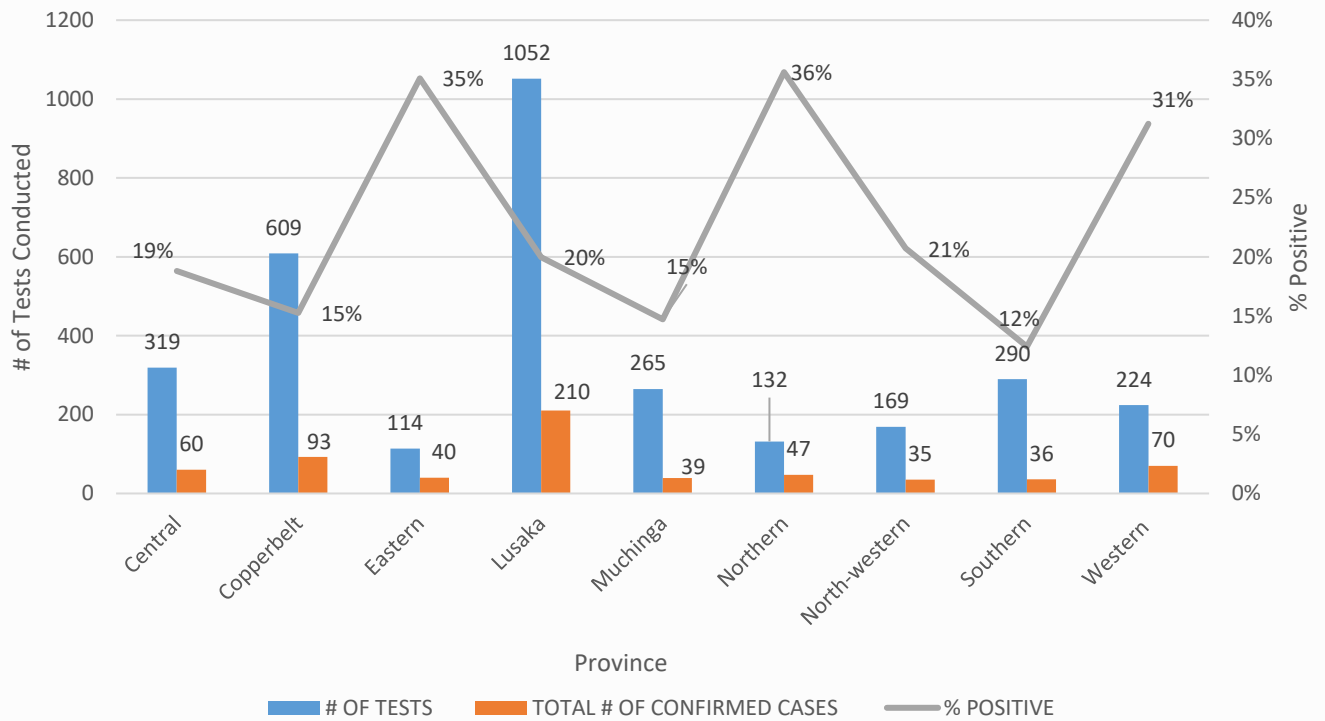


Figure 3: Number of tests by Province vs # of confirmed cases reported (19th July, 2021)

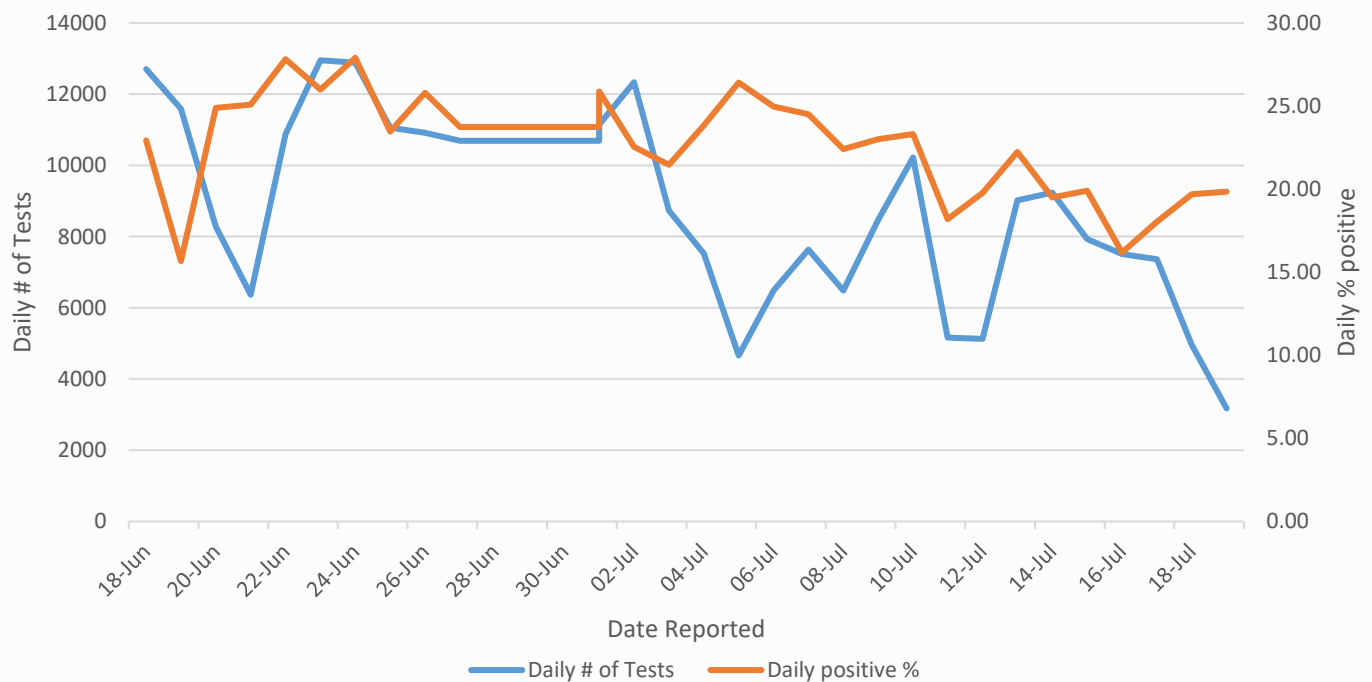


Figure 4: Daily number of tests vs % of positive results recorded (past month)

3.6 ENFORCEMENT OF MEASURES

- In the last 24 hours, a total of 1,922 premises were inspected countrywide, of which 1,666 (88%) were compliant; 169 (9%) were served with notices of improvement and 47 (3%) were closed.

ANNEX 1: CORONA VIRUS DISEASE 2019 (COVID-19) CASE DEFINITIONS

1. Suspect case:

A. Patient with acute respiratory infection (fever and at least one sign/symptom of respiratory disease e.g. cough, shortness of breath), AND with no other aetiology that fully explains the clinical presentation AND a history of travel to or residence in a country/area or territory reporting local transmission of COVID-19 during the 14 days prior to symptom onset,

OR

B. Patient with any acute respiratory illness AND having been in contact with a confirmed or probable COVID-19 case in the last 14 days prior to symptom onset,

OR

C. Patient with severe acute respiratory infection (fever and at least one sign/symptom of respiratory disease e.g. cough, shortness of breath), AND requiring hospitalization AND with no other aetiology that fully explains the clinical presentation

2. Probable case: A suspect case for whom testing for COVID-19 is inconclusive or is tested positive using a pan-coronavirus assay and without laboratory evidence of other respiratory pathogens.

3. Confirmed case: A person with laboratory confirmation of COVID-19 infection, irrespective of clinical signs and symptoms.

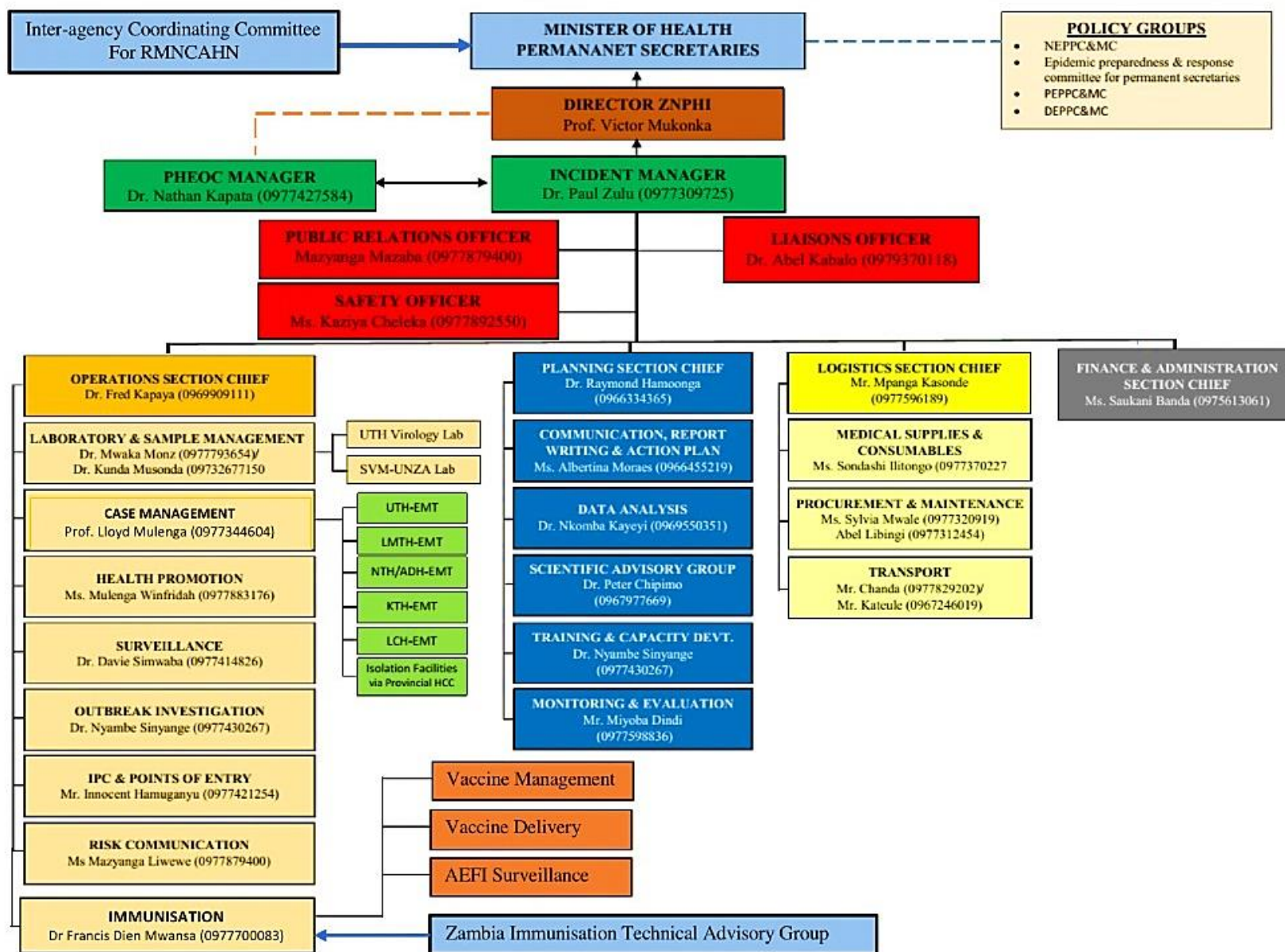
4. COVID-19 Death: COVID-19 death is defined for surveillance purposes as a death resulting from a clinically compatible illness in a probable or confirmed COVID-19 case, unless there is a clear alternative cause of death that cannot be related to COVID disease (e.g. trauma). There should be no period of complete recovery between the illness and death.

5. COVID-19 Associated Death: a death of an individual in whom COVID-19 has been detected but it is not the primary cause of death

6. COVID-19 Unclassified Death: a death of an individual in whom COVID-19 has been detected but the cause of death is yet to be classified as either a COVID-19 death or associated death following expert review

7. Contact: a person who experienced any one of the following exposures during the 2 days before and the 14 days after the onset of symptoms of a probable or confirmed case: a. Face-to-face contact with a probable or confirmed case within 1 meter and for more than 15 minutes; b. Direct physical contact with a probable or confirmed case; c. Direct care for a patient with probable or confirmed COVID-19 disease without using proper personal protective equipment; OR d. Other situations as indicated by local risk assessments.

ANNEX 2: NATIONAL LEVEL INCIDENT MANAGEMENT SYSTEM FOR THE COVID-19 PREPAREDNESS RESPONSE

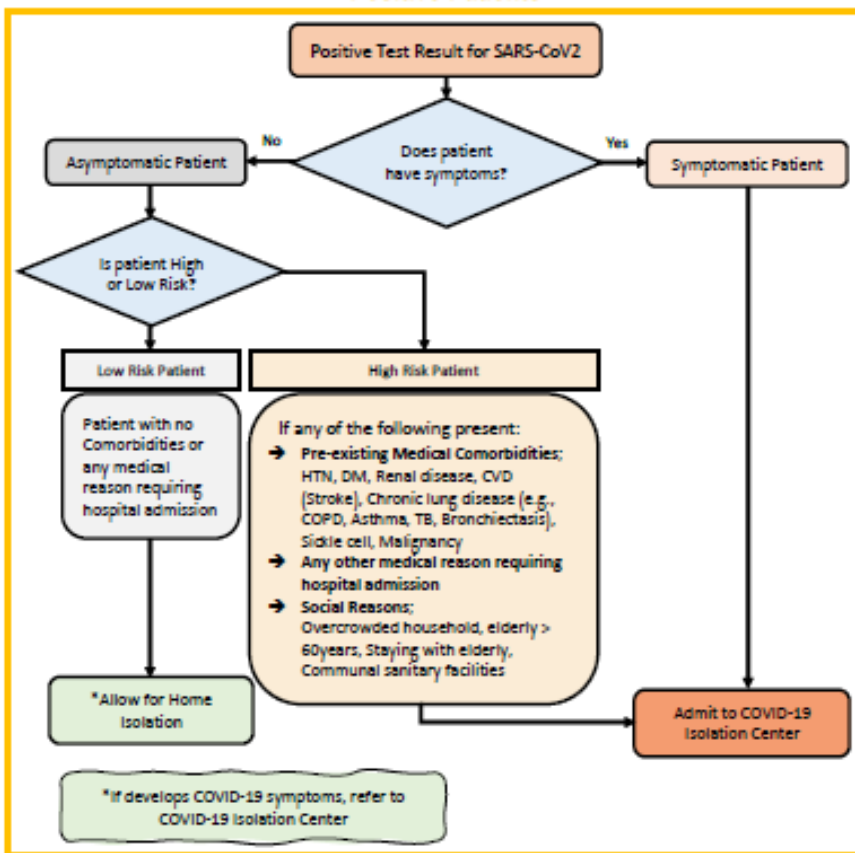


ANNEX 3: UPDATED PUBLIC HEALTH MEASURES TO CIRB COVID-19 IN ZAMBIA; WITH EFFECT FROM FRIDAY 16TH JULY, 2021

1. General Certificate of Education (GCE) and Grade 9 external examinations will be allowed to proceed and will be administered as scheduled on Monday 19th July 2021 under strict adherence to the COVID-19 guidelines.
2. Pre, primary and secondary schools to remain closed and re-open on Monday 16th August 2021 subject to the inspection and certification by the Ministries of General Education, Health in conjunction with the Disaster Management and Mitigation Unit (DMMU), depending on the evolution of the COVID-19 pandemic.
3. Universities, colleges and other institutions of higher learning to continue with on-line classes only for the next 21 days.
4. Bars and taverns to continue operating only on a take-away basis for the next 21 days.
5. Casinos and night clubs to remain closed for the next 21 days.
6. Restaurants to continue operating only on a take-away basis for the next 21 days.
7. Churches and other places of worship to conduct only two one-hour services per week.
8. Gymnasiums to remain closed for the next 21 days except for outdoor activities with strict adherence to the COVID-19 health guidelines.
9. Wedding parties, Chilanga mulilos, matebetos and kitchen parties remain suspended.
10. Funerals to only have 50 mourners.
11. Public transport operators must ensure masking up and physical distancing is always observed. Bus and train stations authorities to ensure full adherence to the Five (5) Golden Rules.
12. All Markets to ensure adherence to the public health guidelines in line with the Five (5) Golden Rules.
13. All physical conferences, workshops and general meetings remain suspended until further notice.

ANNEX 4: CASE MANAGEMENT MODELS

Community Model for COVID-19 Response for SARS-CoV2 Positive Patients



Admission and Discharge Criteria for Covid-19 Patients

S E T T I N G	Hospital/Facility Care	Patients with Medical Conditions requiring continued Care beyond COVID-19 Recovery	Home Care
A D M I S S I O N	<ul style="list-style-type: none"> → Any symptoms for COVID-19 → Asymptomatic High-Risk patients → Presence of other Medical conditions → Where Home Isolation is not feasible 	<ul style="list-style-type: none"> → As medically indicated 	<ul style="list-style-type: none"> → Asymptomatic → No comorbidity → If home Isolation feasible
D I S C H A R G E / D E I S O L A T I O N	<ul style="list-style-type: none"> → Asymptomatic for at least 3 days plus 1 negative PCR at day 7 or beyond AND → 14 days since first Positive PCR 	<ul style="list-style-type: none"> → Two negative PCR Tests at least 24 hours apart 	<ul style="list-style-type: none"> → 1 negative PCR at day 7 or beyond AND → 14 days since first Positive PCR

ANNEX 5: LIST OF DESIGNATED COVID-19 PCR DIAGNOSTIC LABORATORIES

PROVINCE	INSTITUTION
Central	Kabwe General Hospital
Copperbelt	TDRC, Ndola Arthur Davison Children's Hospital
Eastern	Chipata General Hospital
Luapula	Mansa General Hospital
Lusaka	Lusaka District: Coptic; CIDRZ; CFB; Levy; MedLand Hospital; UTH (Virology, ACOE, PCOE); UNZA – SVM; CIDRZ; CHAZ; Lancet; Victoria Hospital; ZNPHRL; Zambia Air Force Hospital; Untold Global Healt; Metropolis, Nature by Nature Chirundu district: Mtendere Mission Hospital
Muchinga	Chinsali General Hospital
Northern	Kasama General Hospital
North-western	Solwezi: Solwezi General Hospital; Kansanshi Mine Hospital (Mary Begg)
Southern	Macha Research Trust Livingstone Teaching Hospital
Western	Lewanika General Hospital

