

ZAMBIA COVID-19 SITUATION REPORT NO. 299

Disease Pandemic: COVID-19

Response start date: 30th January, 2020

Outbreak Declared: 18th March, 2020

Report date: Tuesday 20th July, 2021

Prepared by: MOH/ZNP HI/WHO

Correspondence: ims.covid@znphi.co.zm

1. SITUATION UPDATE *This week (19th – 25th July)* **Cases 1,953** **Deaths 54** **Recoveries 3,029**

1.1 CURRENT NUMBERS (as of 09:00 hours CAT)




➤ In the last 24hrs, we recorded **1,323 new cases** out of 7,174 tests (18% positivity), **25 deaths** and **1,408 recoveries**

- The cumulative number of confirmed COVID-19 cases recorded to date is **187,602** with **3,138 deaths (CFR=1.7%)** and **174,728 recoveries (93% recovered)**. Of the total deaths, **2,336** have been classified as **COVID-19 deaths (CFR=1.2%)** and **802** as **associated deaths**. See [Annex 1](#) for definitions.

- Currently: there are **9,736 active cases**: of these, 8,966 (92%) under community management and 770 (8%) hospitalised

Global Numbers

(Source: Worldometre)

 **192,063,181 Confirmed**
 **4,116,946 Deaths (2.2% CFR)**
 **174,765,405 Recoveries**

Africa Numbers

(Source: Africa CDC)

 **6,267,776 Confirmed**
 **158,697 Deaths (2.6% CFR)**
 **5,477,934 Recoveries**

2. EPIDEMIOLOGICAL HIGHLIGHTS

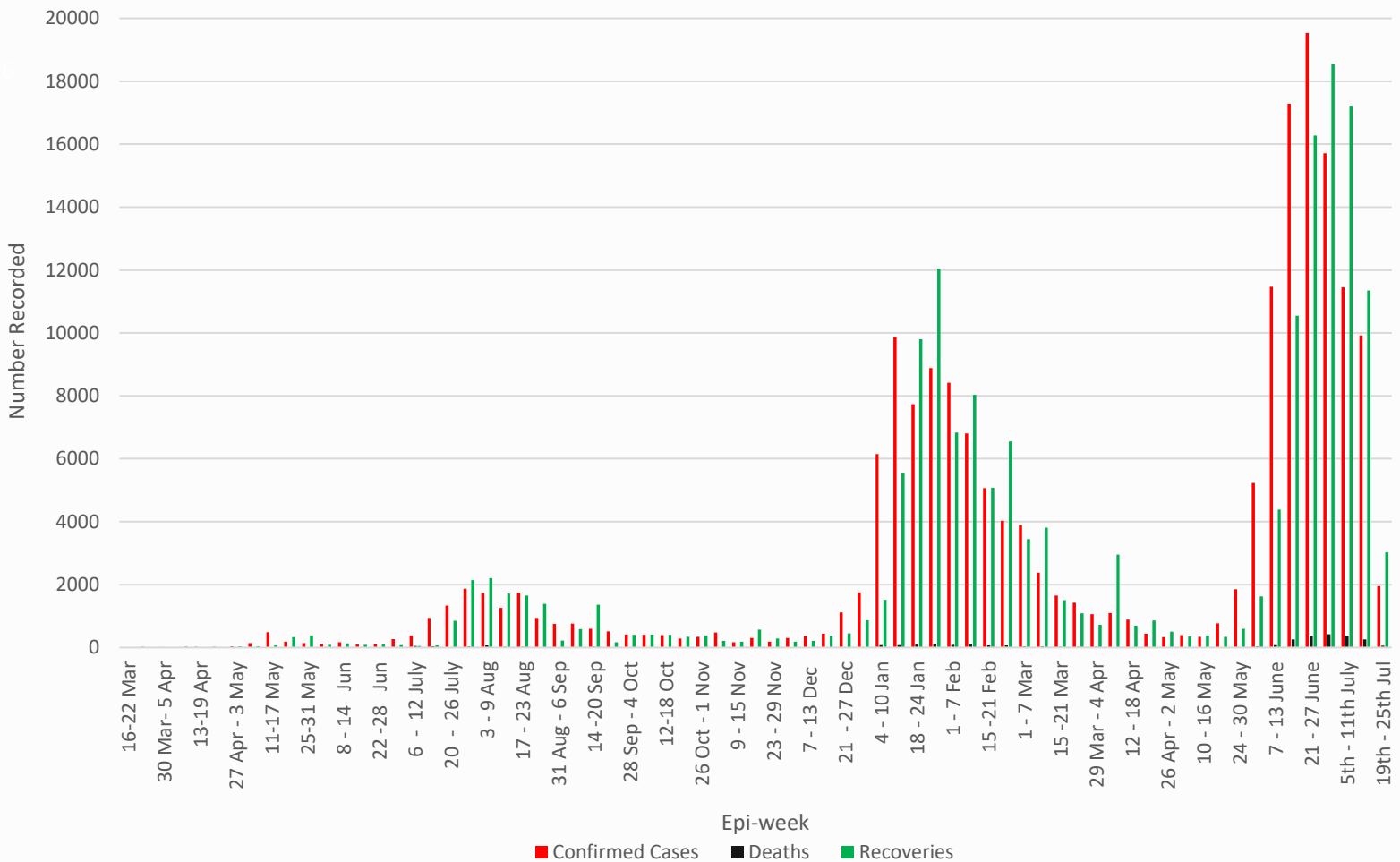


Figure 1: Epicurve of COVID-19 confirmed cases, deaths and recoveries by week as of 20th July, 2021

3. ACTIONS TO DATE

3.1 CO-ORDINATION

➤ Regional/Continental level:

- Zambia continues to participate in AU meetings to ensure continued regional and continental trade and strategies to stop transmission of COVID-19. Zambia also hosts the Southern Africa Regional Collaborating Centre of the Africa CDC and has been coordinating the response at regional level. Detailed updates on the COVID-19 statistics can be accessed on the [Africa CDC website](#), and the Vaccination Dashboard can be accessed [here](#)

➤ National Level:

- Government is implementing a **nine-pronged strategy** in response to the COVID-19 outbreak: **Surveillance and case finding; Case management; Infection prevention and control; Risk communication and community engagement; Laboratory diagnosis; Logistics and supply chain management; Appropriate competent and adequate workforce; Routine essential health services; and Vaccination.**
 - The government continues to enforce measures and interventions to control the spread of COVID-19 countrywide as outlined in the Statutory instruments **SI21 and SI22 of 2020 on COVID-19 and presidential directives.**
 - The **COVID-19 contingency plan** outlining the country's COVID-19 preparedness and response activities underwent revision in the first week of April, 2021 and was approved by Cabinet.
 - Technical co-ordinating meetings are held with cooperating partners and other stakeholders. The meetings are chaired by the Director General, ZNPFI
- The **Incident Management System (IMS)** continues to meet at ZNPFI (with a Zoom link provided to ensure social distancing) on Tuesdays and Thursdays. The IMS structure is available at **Annex 2**
- An update on the enhanced measures to prevent and mitigate the spread of COVID-19 in Zambia was issued to the public on Friday 16th July 2021 (see **Annex 3**)

BACKGROUND

The WHO was alerted of an increase in the number of pneumonia cases of unknown cause detected in Wuhan City, Hubei Province, China. The disease now called Coronavirus Disease 2019 (COVID-19) is caused by a new coronavirus named SARS-CoV-2. The WHO declared the outbreak a PHEIC on 30th January and further declared COVID-19 a pandemic on 12th March. Zambia recorded its first two cases of COVID-19 on 18th March 2020. The first 28 cases in Zambia all had a history of travel to Europe or Asia. Three weeks into the outbreak, cases were noted among people without history of travel but in contact with confirmed cases. By mid-June 2020, cases had been reported in all ten provinces, with Western province being the last to confirm cases of COVID-19. Generalised local person-person transmission is now established throughout the country. To date, Zambia has had two waves of the pandemic, with a third wave currently being experienced.

3.2 SURVEILLANCE AND CLINICAL CASE MANAGEMENT

- Active surveillance is ongoing in healthcare facilities, at community level, through contact tracing and at points of entry. The surveillance and case management reports are provided in Table 1 and 2 below.

Table 1: Breakdown of new and cumulative cases, deaths and recoveries by province

PROVINCE	NUMBERS BY PROVINCE						
	New Cases	New Deaths	New Recoveries	Cumul. Cases	Cumul. Deaths	Cumul. Recoveries	Total Active
CENTRAL	145	2	55	16,206	117	15,368	721
COPPERBELT	158	6	114	25,914	634	24,112	1,168
EASTERN	142	5	158	18,280	274	16,757	1,249
LUAPULA	134	3	63	8,265	59	7,436	770
LUSAKA	136	3	575	62,166	1,389	59,548	1,229
MUCHINGA	91	1	80	7,446	60	6,581	805
NORTHERN	177	3	106	8,045	108	6,902	1,035
N/WESTERN	139	0	74	11,641	123	10,552	966
SOUTHERN	116	1	93	18,883	282	17,863	738
WESTERN	85	1	90	10,756	92	9,609	1,055
TOTAL	1,323 New Cases	25 New Deaths	1,408 New Recoveries	187,602 Cases	3,138 Deaths	174,728 Recoveries	9,736 Active

- All confirmed COVID-19 cases are managed either under facility or community models; the community management model and admission/discharge criteria for persons who test positive for COVID-19 available at **Annex 4**. The revised guidelines for the home management of COVID-19 cases can be accessed [here](#).

Table 2: Breakdown of case management statistics reported in the last 24hrs by province

PROVINCE	NEW ADMISSIONS	FACILITY DISCHARGES	CURRENTLY ADMITTED
CENTRAL	7	8	22
COPPERBELT	30	15	200
EASTERN	10	8	72
LUAPULA	8	4	24
LUSAKA	28	21	250
MUCHINGA	2	2	16
NORTHERN	10	2	35
N/WESTERN	11	15	48
SOUTHERN	9	7	67
WESTERN	4	8	36
TOTAL	119	90	770

3.3 COVID-19 VACCINATION PROGRAMME

- The vaccination programme was officially launched on Wednesday 14th April, 2021 by the Hon. Minister of Health, Dr. Jonas Chanda.
 - To date, 228,000 doses of AstraZeneca have been received under the COVAX facility and an additional 228,000 doses of AstraZeneca were donated by the Government of France through the COVAX facility (received in the country on 5th July, 2021). A further 151,200 doses of the Johnson and Johnson vaccine are expected to arrive in the country tomorrow, 21st July, 2021
 - Administration of Dose 2 of the AstraZeneca vaccine commenced on **Wednesday, 23rd June 2021**.
 - Administration of Dose 1 resumed on Friday 9th July, 2021, following an earlier decision to halt the programme
 - In the last 24 hours, we administered: **7,943 Dose 1 and 3,309 Dose 2 AstraZeneca vaccinations**. Cumulatively to date, 225,464 Dose 1 and 62,501 Dose 2 AstraZeneca (27% of dose 1) have been administered, and an additional 6,899 Dose 1 and 6,336 Dose 2 Sinopharm (92% of dose 1) were administered in Lusaka and on the Copperbelt
- The distribution of the cumulative AstraZeneca dose 1 and dose 2 vaccinations by province is as follows:

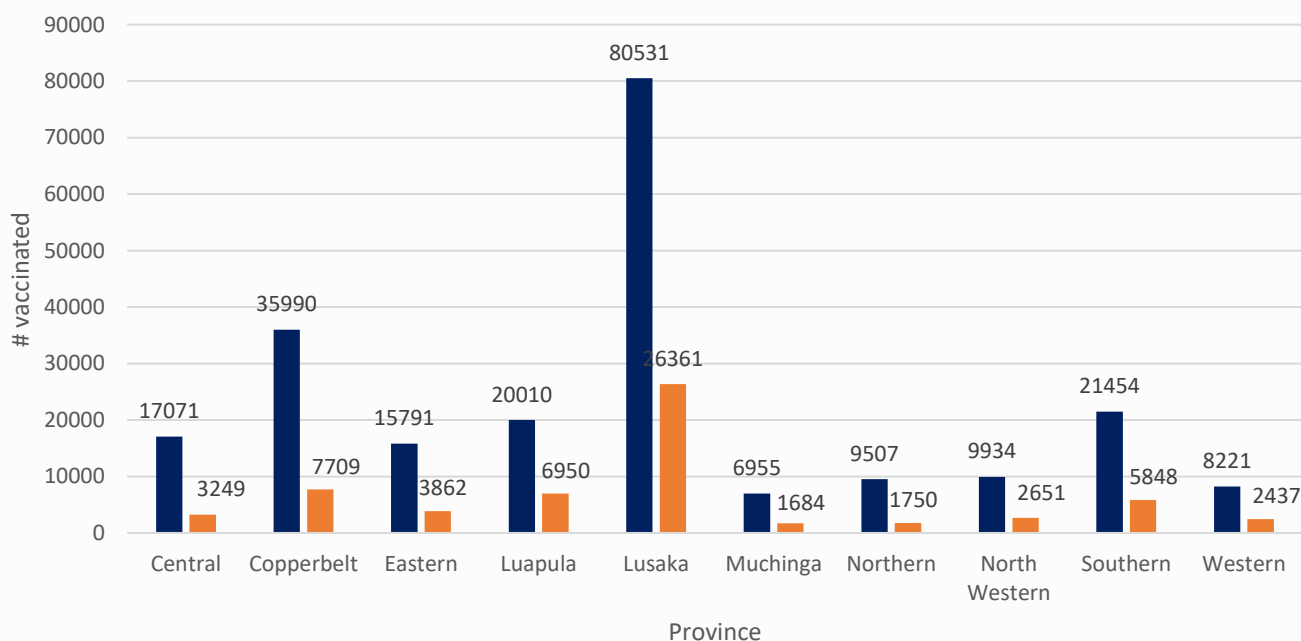


Figure 2: Distribution of cumulative vaccinations AstraZeneca Dose 1 (N=225,464) versus Dose 2 (N=62,501) by province

3.4 LABORATORY AND SAMPLE MANAGEMENT

- Zambia is utilising a number of testing platforms, including real-time Polymerase Chain Reaction (RT-PCR), Gene Xpert, Hologic Panther, and Roche Cobas 6800, as well as Standard Q and Panbio Rapid Diagnostic Tests. See **Annex 5** for a list of the currently **designated diagnostic laboratories**. A list of testing centres can be found here: <https://arcg.is/15rqeP> and the revised testing strategy can be found [here](#).

- **Previous week analysis (12th - 18th July): 51,151 tests** were conducted in the previous week (**19%** tested positive for SARS-CoV-2) compared to **49,130 tests** the week before last (**23%** positivity).
- **Current week analysis (19th - 25th July):** In the last 24 hrs, 7,174 tests were conducted (18% positivity); the cumulative number of tests conducted this week now stands at 10,348 (19% positivity).
- To date, a cumulative **2,024,817 tests** have been conducted, with a cumulative **187,602 confirmed positive (9% overall positivity)** for SARS-CoV-2.
- The testing coverage is **119,107 per 1,000,000 population**

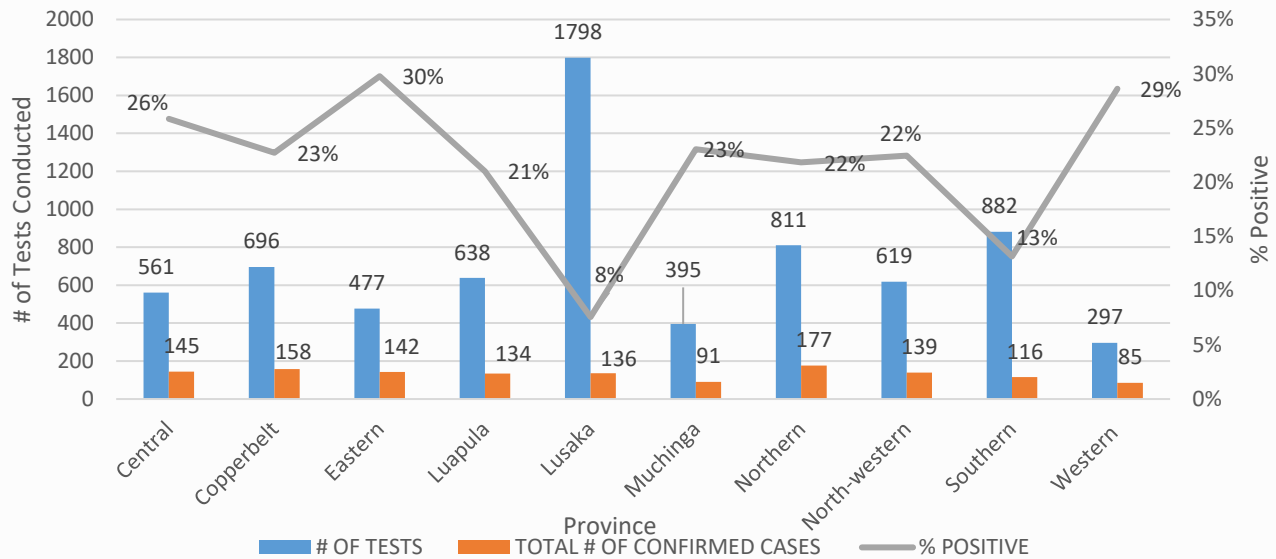


Figure 3: Number of tests by Province vs # of confirmed cases reported (20th July, 2021)

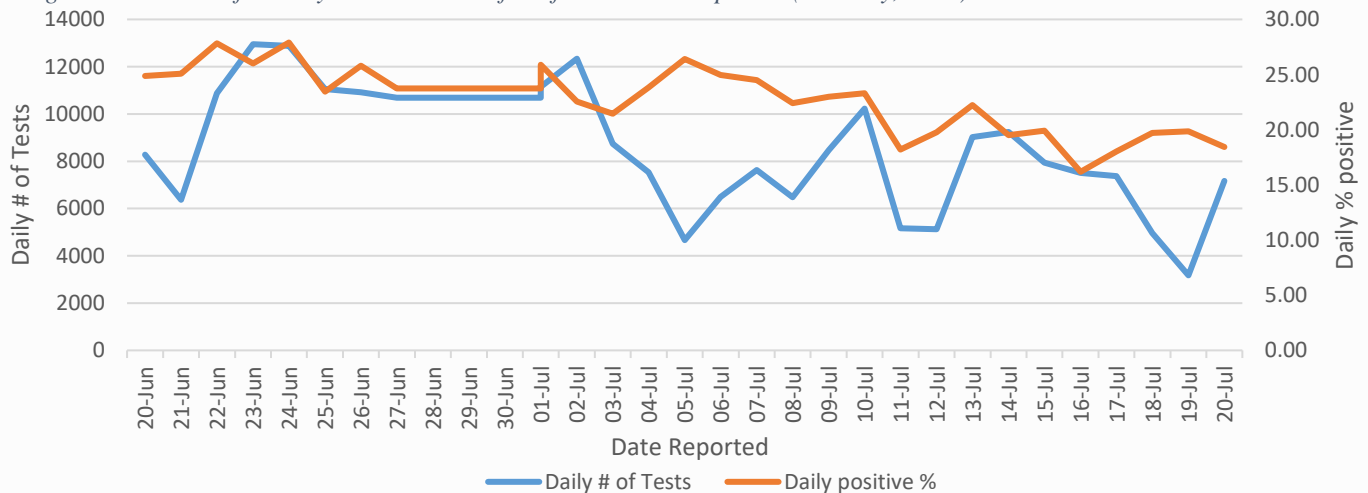


Figure 4: Daily number of tests vs % of positive results recorded (past month)

3.6 ENFORCEMENT OF MEASURES

- In the last 24 hours, a total of 1,865 premises were inspected countrywide, of which 1,593 (87%) were compliant; 158 (8%) were served with notices of improvement and 87 (5%) were closed.

ANNEX 1: CORONA VIRUS DISEASE 2019 (COVID-19) CASE DEFINITIONS

1. Suspect case:

A. Patient with acute respiratory infection (fever and at least one sign/symptom of respiratory disease e.g. cough, shortness of breath), AND with no other aetiology that fully explains the clinical presentation AND a history of travel to or residence in a country/area or territory reporting local transmission of COVID-19 during the 14 days prior to symptom onset,

OR

B. Patient with any acute respiratory illness AND having been in contact with a confirmed or probable COVID-19 case in the last 14 days prior to symptom onset,

OR

C. Patient with severe acute respiratory infection (fever and at least one sign/symptom of respiratory disease e.g. cough, shortness of breath), AND requiring hospitalization AND with no other aetiology that fully explains the clinical presentation

2. Probable case: A suspect case for whom testing for COVID-19 is inconclusive or is tested positive using a pan-coronavirus assay and without laboratory evidence of other respiratory pathogens.

3. Confirmed case: A person with laboratory confirmation of COVID-19 infection, irrespective of clinical signs and symptoms.

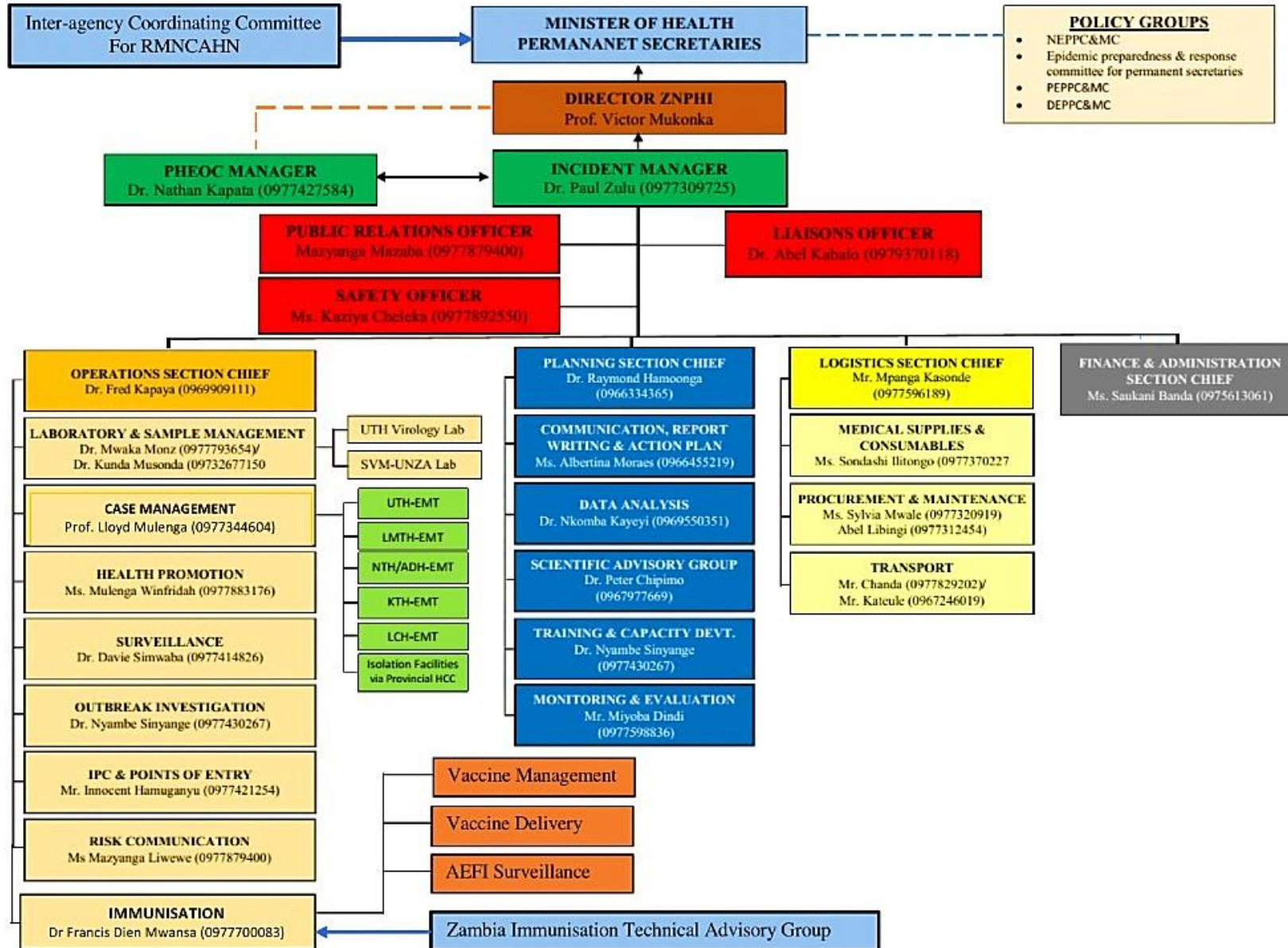
4. COVID-19 Death: COVID-19 death is defined for surveillance purposes as a death resulting from a clinically compatible illness in a probable or confirmed COVID-19 case, unless there is a clear alternative cause of death that cannot be related to COVID disease (e.g. trauma). There should be no period of complete recovery between the illness and death.

5. COVID-19 Associated Death: a death of an individual in whom COVID-19 has been detected but it is not the primary cause of death

6. COVID-19 Unclassified Death: a death of an individual in whom COVID-19 has been detected but the cause of death is yet to be classified as either a COVID-19 death or associated death following expert review

7. Contact: a person who experienced any one of the following exposures during the 2 days before and the 14 days after the onset of symptoms of a probable or confirmed case: a. Face-to-face contact with a probable or confirmed case within 1 meter and for more than 15 minutes; b. Direct physical contact with a probable or confirmed case; c. Direct care for a patient with probable or confirmed COVID-19 disease without using proper personal protective equipment; OR d. Other situations as indicated by local risk assessments.

ANNEX 2: NATIONAL LEVEL INCIDENT MANAGEMENT SYSTEM FOR THE COVID-19 PREPAREDNESS RESPONSE

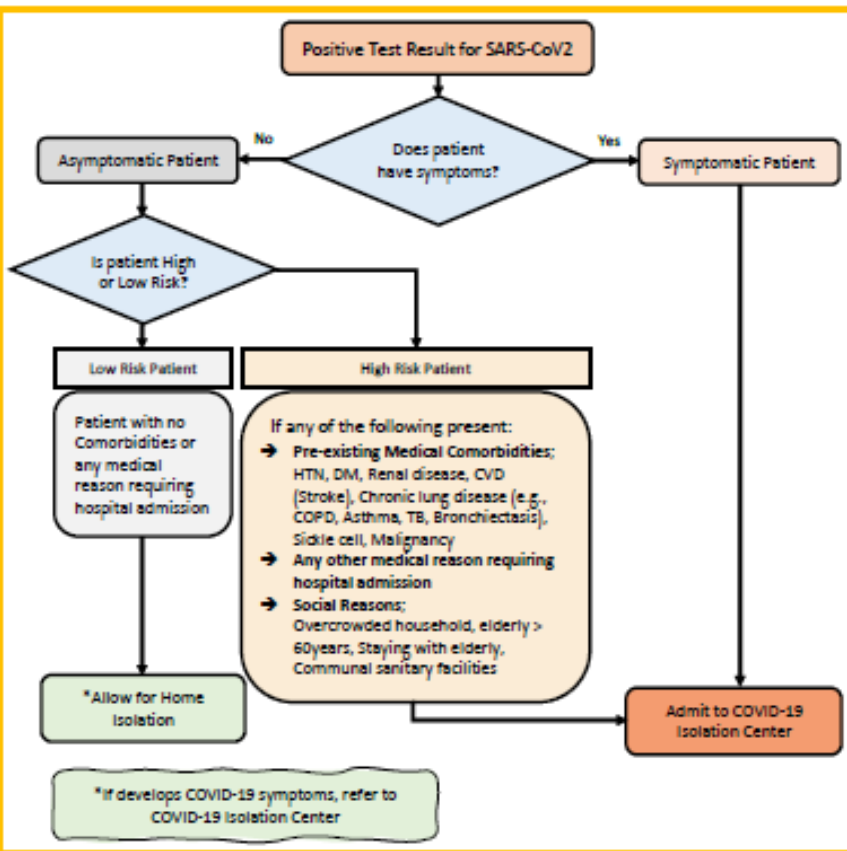


ANNEX 3: UPDATED PUBLIC HEALTH MEASURES TO CIRB COVID-19 IN ZAMBIA; WITH EFFECT FROM FRIDAY 16TH JULY, 2021

1. General Certificate of Education (GCE) and Grade 9 external examinations will be allowed to proceed and will be administered as scheduled on Monday 19th July 2021 under strict adherence to the COVID-19 guidelines.
2. Pre, primary and secondary schools to remain closed and re-open on Monday 16th August 2021 subject to the inspection and certification by the Ministries of General Education, Health in conjunction with the Disaster Management and Mitigation Unit (DMMU), depending on the evolution of the COVID-19 pandemic.
3. Universities, colleges and other institutions of higher learning to continue with on-line classes only for the next 21 days.
4. Bars and taverns to continue operating only on a take-away basis for the next 21 days.
5. Casinos and night clubs to remain closed for the next 21 days.
6. Restaurants to continue operating only on a take-away basis for the next 21 days.
7. Churches and other places of worship to conduct only two one-hour services per week.
8. Gymnasiums to remain closed for the next 21 days except for outdoor activities with strict adherence to the COVID-19 health guidelines.
9. Wedding parties, Chilanga mulilos, matebetos and kitchen parties remain suspended.
10. Funerals to only have 50 mourners.
11. Public transport operators must ensure masking up and physical distancing is always observed. Bus and train stations authorities to ensure full adherence to the Five (5) Golden Rules.
12. All Markets to ensure adherence to the public health guidelines in line with the Five (5) Golden Rules.
13. All physical conferences, workshops and general meetings remain suspended until further notice.

ANNEX 4: CASE MANAGEMENT MODELS

Community Model for COVID-19 Response for SARS-CoV2 Positive Patients



Admission and Discharge Criteria for Covid-19 Patients

SETTING	Hospital/Facility Care	Patients with Medical Conditions requiring continued Care beyond COVID-19 Recovery	Home Care
ADMISSION	<ul style="list-style-type: none"> → Any symptoms for COVID-19 → Asymptomatic High-Risk patients → Presence of other Medical conditions → Where Home Isolation is not feasible 	<ul style="list-style-type: none"> → As medically indicated 	<ul style="list-style-type: none"> → Asymptomatic → No comorbidity → If home Isolation feasible
DISCHARGE / DEISOLATION	<ul style="list-style-type: none"> → Asymptomatic for at least 3 days plus 1 negative PCR at day 7 or beyond AND → 14 days since first Positive PCR 	<ul style="list-style-type: none"> → Two negative PCR Tests at least 24 hours apart 	<ul style="list-style-type: none"> → 1 negative PCR at day 7 or beyond AND → 14 days since first Positive PCR

ANNEX 5: LIST OF DESIGNATED COVID-19 PCR DIAGNOSTIC LABORATORIES

PROVINCE	INSTITUTION
Central	Kabwe General Hospital
Copperbelt	TDRC, Ndola Arthur Davison Children's Hospital
Eastern	Chipata General Hospital
Luapula	Mansa General Hospital
Lusaka	Lusaka District: Coptic; CIDRZ; CFB; Levy; MedLand Hospital; UTH (Virology, ACOE, PCOE); UNZA – SVM; CIDRZ; CHAZ; Lancet; Victoria Hospital; ZNPHRL; Zambia Air Force Hospital; Untold Global Healt; Metropolis, Nature by Nature Chirundu district: Mtendere Mission Hospital
Muchinga	Chinsali General Hospital
Northern	Kasama General Hospital
North-western	Solwezi: Solwezi General Hospital; Kansanshi Mine Hospital (Mary Begg)
Southern	Macha Research Trust Livingstone Teaching Hospital
Western	Lewanika General Hospital

