

ZAMBIA COVID-19 SITUATION REPORT NO. 300

Disease Pandemic: COVID-19

Response start date: 30th January, 2020

Outbreak Declared: 18th March, 2020

Report date: Wednesday 21st July, 2021 Prepared by: MOH/ZNP HI/WHO

Correspondence: ims.covid@znphi.co.zm

1. SITUATION UPDATE This week (19th – 25th July)  **Cases 2,924**  **Deaths 78**  **Recoveries 3,730**



1.1 CURRENT NUMBERS (as of 09:00 hours CAT)

➤ In the last 24hrs, we recorded **971 new cases** out of 5,682 tests (17% positivity), **24 deaths and 701 recoveries**

- The cumulative number of confirmed COVID-19 cases recorded to date is **188,573** with **3,162 deaths (CFR=1.7%)** and **175,429 recoveries (93% recovered)**. Of the total deaths, **2,355** have been classified as **COVID-19 deaths (CFR=1.2%)** and **807** as **associated deaths**. See [Annex 1](#) for definitions.
- Currently: there are **9,982 active cases**: of these, 9,247 (93%) under community management and 735 (7%) hospitalised

Global Numbers

(Source: Worldometre)

 **192,405,259 Confirmed**
 **4,136,928 Deaths (2.2% CFR)**
 **175,069,371 Recoveries**

Africa Numbers

(Source: Africa CDC)

 **6,281,998 Confirmed**
 **159,719 Deaths (2.6% CFR)**
 **5,513,426 Recoveries**

2. EPIDEMIOLOGICAL HIGHLIGHTS

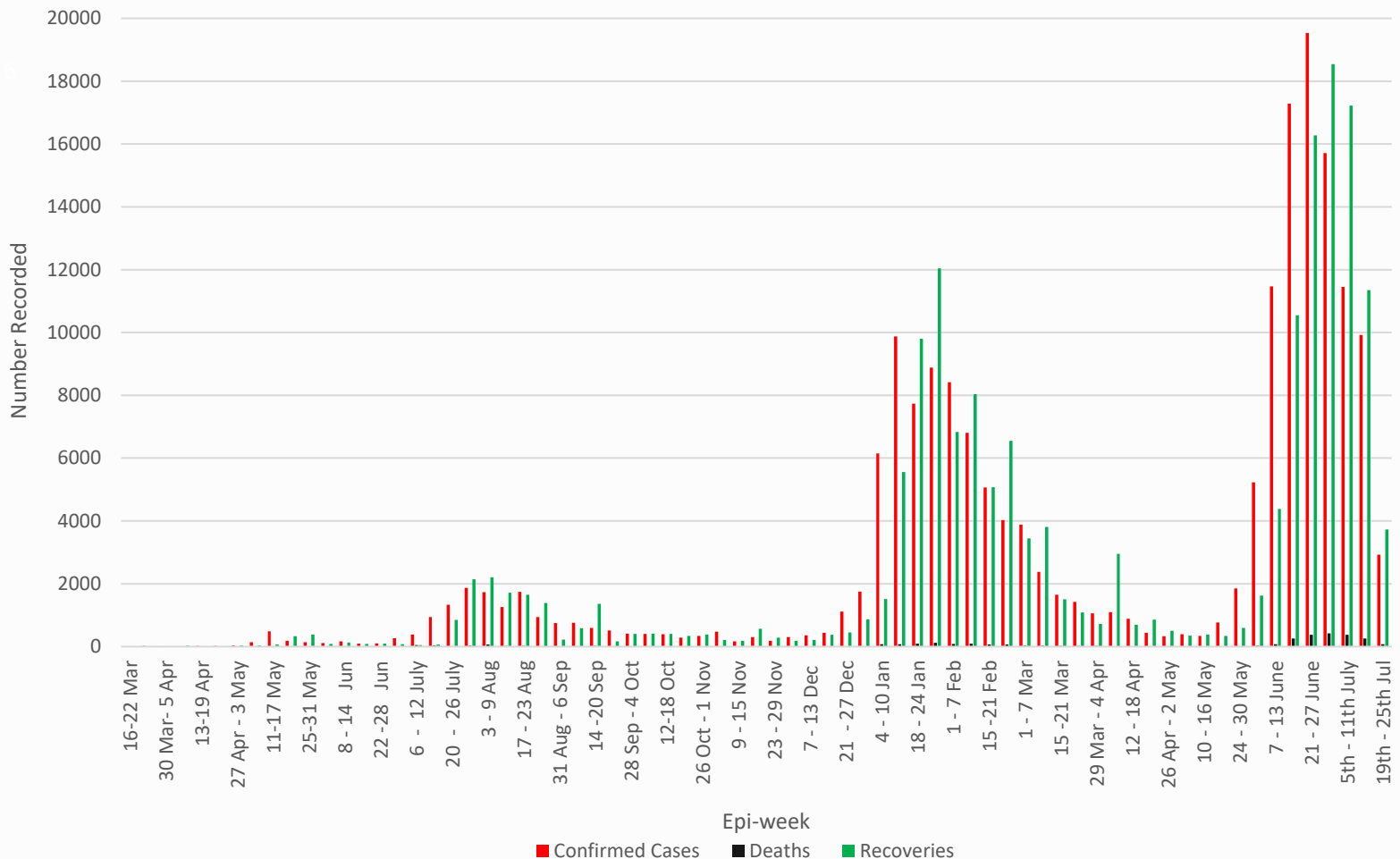


Figure 1: Epicurve of COVID-19 confirmed cases, deaths and recoveries by week as of 21st July, 2021

3. ACTIONS TO DATE

3.1 CO-ORDINATION

➤ Regional/Continental level:

- Zambia continues to participate in AU meetings to ensure continued regional and continental trade and strategies to stop transmission of COVID-19. Zambia also hosts the Southern Africa Regional Collaborating Centre of the Africa CDC and has been coordinating the response at regional level. To date, Southern Africa has recorded 2,994,979 cases; 82,009 deaths; and 2,656,879 recoveries. Detailed updates on the COVID-19 statistics can be accessed on the [Africa CDC website](#), and the Vaccination Dashboard can be accessed [here](#)

➤ National Level:

- Government is implementing a **nine-pronged strategy** in response to the COVID-19 outbreak: Surveillance and case finding; **Case management; Infection prevention and control; Risk communication and community engagement; Laboratory diagnosis; Logistics and supply chain management; Appropriate competent and adequate workforce; Routine essential health services; and Vaccination.**
 - The government continues to enforce measures and interventions to control the spread of COVID-19 countrywide as outlined in the Statutory instruments **SI21 and SI22 of 2020 on COVID-19 and presidential directives.**
 - The **COVID-19 contingency plan** outlining the country's COVID-19 preparedness and response activities underwent revision in the first week of April, 2021 and was approved by Cabinet.
 - Technical co-ordinating meetings are held with cooperating partners and other stakeholders. The meetings are chaired by the Director General, ZNPFI
- The **Incident Management System (IMS)** continues to meet at ZNPFI (with a Zoom link provided to ensure social distancing) on Tuesdays and Thursdays. The IMS structure is available at **Annex 2**
- An update on the enhanced measures to prevent and mitigate the spread of COVID-19 in Zambia was issued to the public on Friday 16th July 2021 (see **Annex 3**)

BACKGROUND

The WHO was alerted of an increase in the number of pneumonia cases of unknown cause detected in Wuhan City, Hubei Province, China. The disease now called Coronavirus Disease 2019 (COVID-19) is caused by a new coronavirus named SARS-CoV-2. The WHO declared the outbreak a PHEIC on 30th January and further declared COVID-19 a pandemic on 12th March. Zambia recorded its first two cases of COVID-19 on 18th March 2020. The first 28 cases in Zambia all had a history of travel to Europe or Asia. Three weeks into the outbreak, cases were noted among people without history of travel but in contact with confirmed cases. By mid-June 2020, cases had been reported in all ten provinces, with Western province being the last to confirm cases of COVID-19. Generalised local person-person transmission is now established throughout the country. To date, Zambia has had two waves of the pandemic, with a third wave currently being experienced.

3.2 SURVEILLANCE AND CLINICAL CASE MANAGEMENT

- Active surveillance is ongoing in healthcare facilities, at community level, through contact tracing and at points of entry. The surveillance and case management reports are provided in Table 1 and 2 below.

Table 1: Breakdown of new and cumulative cases, deaths and recoveries by province

PROVINCE	NUMBERS BY PROVINCE						
	New Cases	New Deaths	New Recoveries	Cumul. Cases	Cumul. Deaths	Cumul. Recoveries	Total Active
CENTRAL	128	2	64	16,334	119	15,432	783
COPPERBELT	132	6	77	26,046	640	24,189	1,217
EASTERN	115	0	79	18,395	274	16,836	1,285
LUAPULA	90	2	66	8,355	61	7,502	792
LUSAKA	138	5	119	62,304	1,394	59,667	1,243
MUCHINGA	81	0	72	7,527	60	6,653	814
NORTHERN	133	3	23	8,178	111	6,925	1,142
N/WESTERN	6	3	69	11,647	126	10,621	900
SOUTHERN	106	2	74	18,989	284	17,937	768
WESTERN	42	1	58	10,798	93	9,667	1,038
TOTAL	971 New Cases	24 New Deaths	701 New Recoveries	188,573 Cases	3,162 Deaths	175,429 Recoveries	9,982 Active

- All confirmed COVID-19 cases are managed either under facility or community models; the community management model and admission/discharge criteria for persons who test positive for COVID-19 available at **Annex 4**. The revised guidelines for the home management of COVID-19 cases can be accessed [here](#).

Table 2: Breakdown of case management statistics reported in the last 24hrs by province

PROVINCE	NEW ADMISSIONS	FACILITY DISCHARGES	CURRENTLY ADMITTED	PATIENTS ON OXYGEN	CRITICAL PATIENTS
CENTRAL	7	3	23	14	3
COPPERBELT	26	23	195	152	16
EASTERN	14	17	70	53	15
LUAPULA	7	6	23	18	2
LUSAKA	19	38	221	183	60
MUCHINGA	2	2	20	7	5
NORTHERN	9	6	35	13	6
N/WESTERN	8	9	44	22	6
SOUTHERN	9	5	65	47	16
WESTERN	6	2	39	27	2
TOTAL	107	111	735	536	131

*Note: Critical patients are a sub-set of those on Oxygen

3.3 COVID-19 VACCINATION PROGRAMME

- The vaccination programme was officially launched on **Wednesday 14th April, 2021** by the Hon. Minister of Health, Dr. Jonas Chanda. Administration of Dose 1 was paused temporarily on 24th May, 2021 following a decision to ring fence the remaining doses for use as dose 2. Administration of Dose 2 of the AstraZeneca vaccine commenced on **Wednesday, 23rd June 2021**; **Dose 1** vaccinations resumed on Friday 9th July, 2021.
 - To date, 228,000 doses of AstraZeneca have been received under the COVAX facility and an additional 228,000 doses of AstraZeneca were donated by the Government of France through the COVAX facility (received in the country on 5th July, 2021). A further 151,200 doses of the Johnson and Johnson vaccine arrived in the country today, 21st July, 2021
 - In the last 24 hours, we administered: **7,665 Dose 1 and 3,614 Dose 2 AstraZeneca vaccinations**. Cumulatively to date, 233,129 Dose 1 and 66,115 Dose 2 AstraZeneca (28% of dose 1) have been administered, and an additional 6,899 Dose 1 and 6,336 Dose 2 Sinopharm (92% of dose 1) were administered in Lusaka and on the Copperbelt
- The distribution of the cumulative AstraZeneca dose 1 and dose 2 vaccinations by province is as follows:

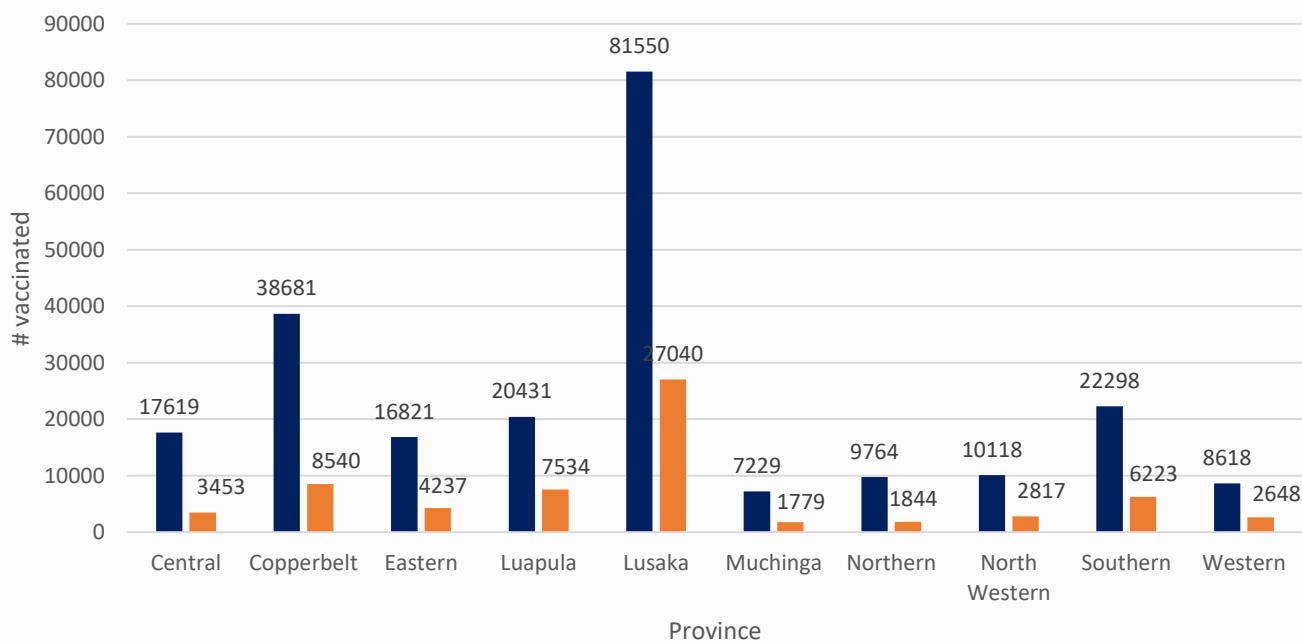


Figure 2: Distribution of cumulative vaccinations AstraZeneca Dose 1 (N=233,129) versus Dose 2 (N=66,115) by province

3.4 LABORATORY AND SAMPLE MANAGEMENT

- Zambia is utilising a number of testing platforms, including real-time Polymerase Chain Reaction (RT-PCR), Gene Xpert, Hologic Panther, and Roche Cobas 6800, as well as Standard Q and Panbio Rapid Diagnostic Tests. See **Annex 5** for a list of the currently **designated diagnostic laboratories**. A list of testing centres can be found here: <https://arcg.is/15rqeP> and the revised testing strategy can be found [here](#).

- **Previous week analysis (12th - 18th July): 51,151 tests** were conducted in the previous week (**19%** tested positive for SARS-CoV-2) compared to **49,130 tests** the week before last (**23%** positivity).
- **Current week analysis (19th - 25th July):** In the last 24 hrs, 5,682 tests were conducted (17% positivity); the cumulative number of tests conducted this week now stands at 16,030 (18% positivity).
- To date, a cumulative **2,030,499 tests** have been conducted, with a cumulative **188,573 confirmed positive (9% overall positivity)** for SARS-CoV-2.
- The testing coverage is **119,441 per 1,000,000 population**

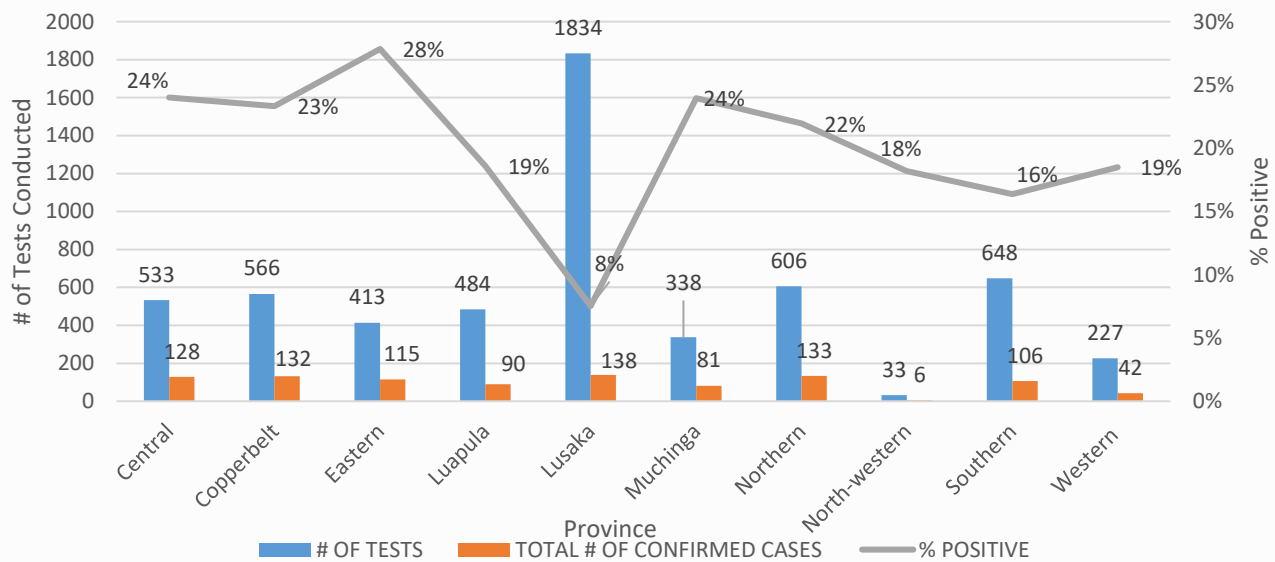


Figure 3: Number of tests by Province vs # of confirmed cases reported (21st July, 2021)

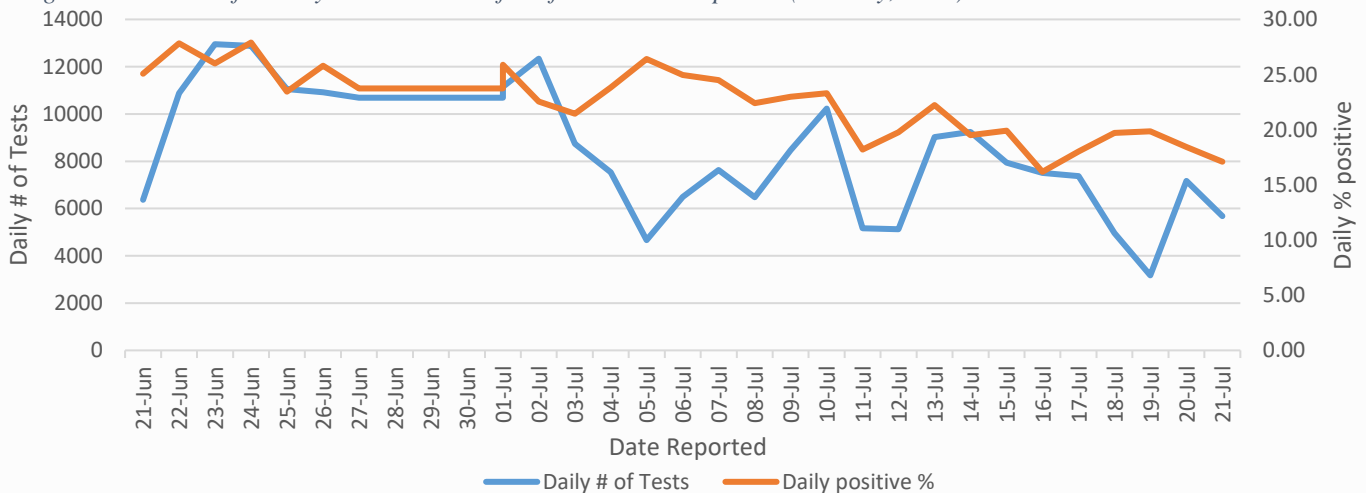


Figure 4: Daily number of tests vs % of positive results recorded (past month)

3.6 ENFORCEMENT OF MEASURES

- In the last 24 hours, a total of 1,690 premises were inspected countrywide, of which 1,414 (84%) were compliant; 232 (14%) were served with notices of improvement and 46 (3%) were closed.

ANNEX 1: CORONA VIRUS DISEASE 2019 (COVID-19) CASE DEFINITIONS

1. Suspect case:

A. Patient with acute respiratory infection (fever and at least one sign/symptom of respiratory disease e.g. cough, shortness of breath), AND with no other aetiology that fully explains the clinical presentation AND a history of travel to or residence in a country/area or territory reporting local transmission of COVID-19 during the 14 days prior to symptom onset,

OR

B. Patient with any acute respiratory illness AND having been in contact with a confirmed or probable COVID-19 case in the last 14 days prior to symptom onset,

OR

C. Patient with severe acute respiratory infection (fever and at least one sign/symptom of respiratory disease e.g. cough, shortness of breath), AND requiring hospitalization AND with no other aetiology that fully explains the clinical presentation

2. Probable case: A suspect case for whom testing for COVID-19 is inconclusive or is tested positive using a pan-coronavirus assay and without laboratory evidence of other respiratory pathogens.

3. Confirmed case: A person with laboratory confirmation of COVID-19 infection, irrespective of clinical signs and symptoms.

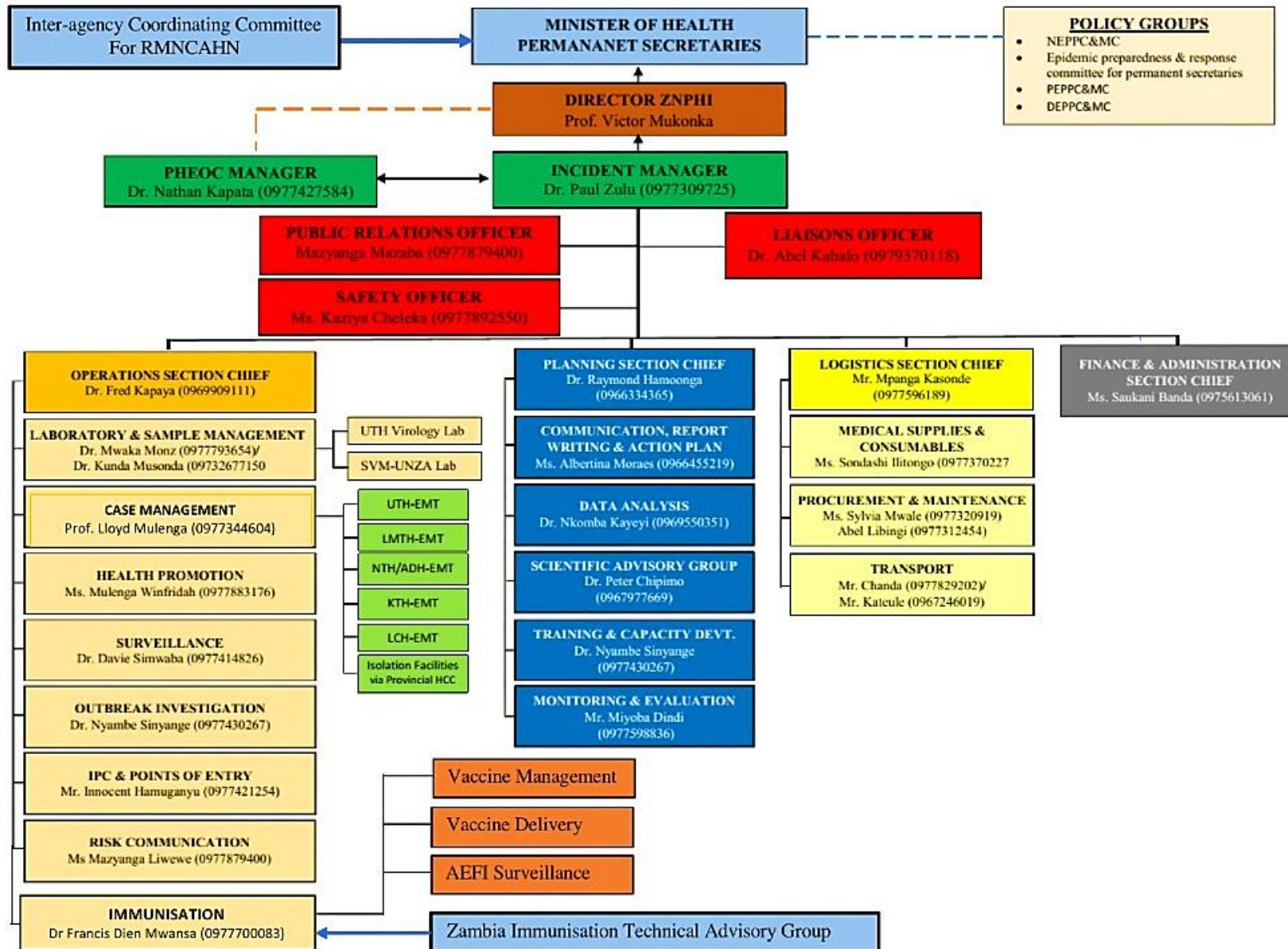
4. COVID-19 Death: COVID-19 death is defined for surveillance purposes as a death resulting from a clinically compatible illness in a probable or confirmed COVID-19 case, unless there is a clear alternative cause of death that cannot be related to COVID disease (e.g. trauma). There should be no period of complete recovery between the illness and death.

5. COVID-19 Associated Death: a death of an individual in whom COVID-19 has been detected but it is not the primary cause of death

6. COVID-19 Unclassified Death: a death of an individual in whom COVID-19 has been detected but the cause of death is yet to be classified as either a COVID-19 death or associated death following expert review

7. Contact: a person who experienced any one of the following exposures during the 2 days before and the 14 days after the onset of symptoms of a probable or confirmed case: a. Face-to-face contact with a probable or confirmed case within 1 meter and for more than 15 minutes; b. Direct physical contact with a probable or confirmed case; c. Direct care for a patient with probable or confirmed COVID-19 disease without using proper personal protective equipment; OR d. Other situations as indicated by local risk assessments.

ANNEX 2: NATIONAL LEVEL INCIDENT MANAGEMENT SYSTEM FOR THE COVID-19 PREPAREDNESS RESPONSE

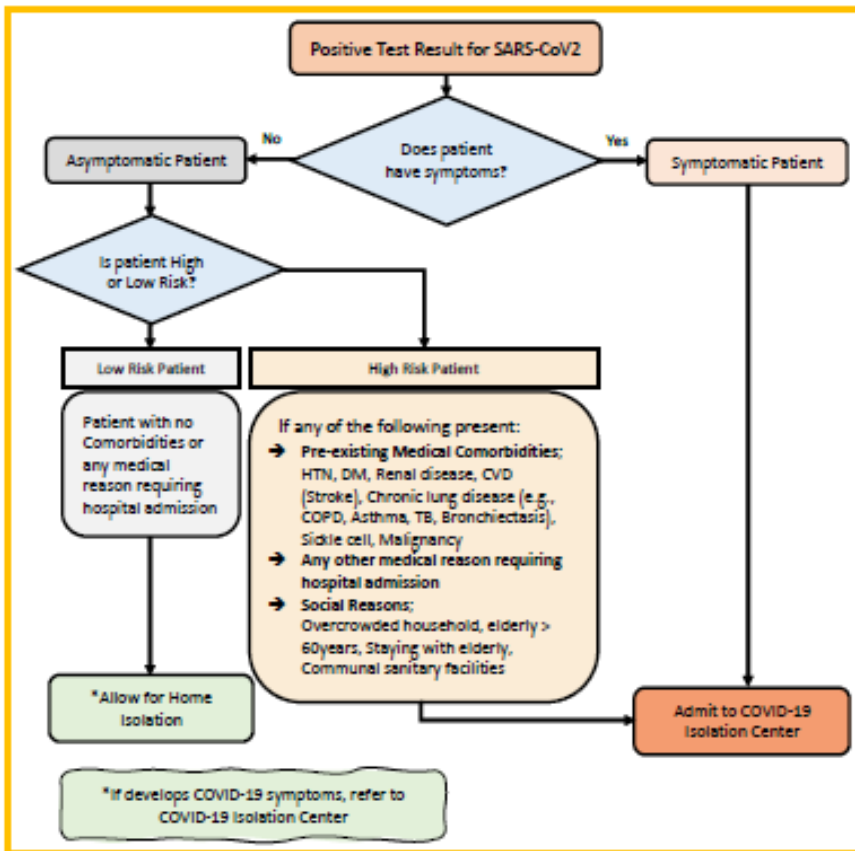


ANNEX 3: UPDATED PUBLIC HEALTH MEASURES TO CIRB COVID-19 IN ZAMBIA; WITH EFFECT FROM FRIDAY 16TH JULY, 2021

1. General Certificate of Education (GCE) and Grade 9 external examinations will be allowed to proceed and will be administered as scheduled on Monday 19th July 2021 under strict adherence to the COVID-19 guidelines.
2. Pre, primary and secondary schools to remain closed and re-open on Monday 16th August 2021 subject to the inspection and certification by the Ministries of General Education, Health in conjunction with the Disaster Management and Mitigation Unit (DMMU), depending on the evolution of the COVID-19 pandemic.
3. Universities, colleges and other institutions of higher learning to continue with on-line classes only for the next 21 days.
4. Bars and taverns to continue operating only on a take-away basis for the next 21 days.
5. Casinos and night clubs to remain closed for the next 21 days.
6. Restaurants to continue operating only on a take-away basis for the next 21 days.
7. Churches and other places of worship to conduct only two one-hour services per week.
8. Gymnasiums to remain closed for the next 21 days except for outdoor activities with strict adherence to the COVID-19 health guidelines.
9. Wedding parties, Chilanga mulilos, matebetos and kitchen parties remain suspended.
10. Funerals to only have 50 mourners.
11. Public transport operators must ensure masking up and physical distancing is always observed. Bus and train stations authorities to ensure full adherence to the Five (5) Golden Rules.
12. All Markets to ensure adherence to the public health guidelines in line with the Five (5) Golden Rules.
13. All physical conferences, workshops and general meetings remain suspended until further notice.

ANNEX 4: CASE MANAGEMENT MODELS

Community Model for COVID-19 Response for SARS-CoV2 Positive Patients



Admission and Discharge Criteria for Covid-19 Patients

S E T T I N G	Hospital/Facility Care	Patients with Medical Conditions requiring continued Care beyond COVID-19 Recovery	Home Care
A D M I S S I O N	<ul style="list-style-type: none"> → Any symptoms for COVID-19 → Asymptomatic High-Risk patients → Presence of other Medical conditions → Where Home Isolation is not feasible 	<ul style="list-style-type: none"> → As medically indicated 	<ul style="list-style-type: none"> → Asymptomatic → No comorbidity → If home Isolation feasible
D I S C H A R G E / D E I S O L A T I O N	<ul style="list-style-type: none"> → Asymptomatic for at least 3 days plus 1 negative PCR at day 7 or beyond AND → 14 days since first Positive PCR 	<ul style="list-style-type: none"> → Two negative PCR Tests at least 24 hours apart 	<ul style="list-style-type: none"> → 1 negative PCR at day 7 or beyond AND → 14 days since first Positive PCR

ANNEX 5: LIST OF DESIGNATED COVID-19 PCR DIAGNOSTIC LABORATORIES

PROVINCE	INSTITUTION
Central	Kabwe General Hospital
Copperbelt	TDRC, Ndola Arthur Davison Children's Hospital
Eastern	Chipata General Hospital
Luapula	Mansa General Hospital
Lusaka	Lusaka District: Coptic; CIDRZ; CFB; Levy; MedLand Hospital; UTH (Virology, ACOE, PCOE); UNZA – SVM; CIDRZ; CHAZ; Lancet; Victoria Hospital; ZNPHRL; Zambia Air Force Hospital; Untold Global Healt; Metropolis, Nature by Nature Chirundu district: Mtendere Mission Hospital
Muchinga	Chinsali General Hospital
Northern	Kasama General Hospital
North-western	Solwezi: Solwezi General Hospital; Kansanshi Mine Hospital (Mary Begg)
Southern	Macha Research Trust Livingstone Teaching Hospital
Western	Lewanika General Hospital

