

ZAMBIA COVID-19 SITUATION REPORT NO. 309

Disease Pandemic: COVID-19 Response start date: 30th January, 2020 Outbreak Declared: 18th March, 2020
Report date: Thursday 5th August, 2021 Prepared by: MOH/ZNP HI/WHO Correspondence: ims.covid@znp hi.co.zm

1. SITUATION UPDATE *This week (2nd – 8th Aug)* **Cases 2,162** **Deaths 41** **Recoveries 2,173**



1.1 CURRENT NUMBERS (as of 09:00 hours CAT)

➤ In the last 24hrs: we recorded **664 new cases** out of 8,217 tests (8% positivity), **17 deaths** and **621 recoveries**

- **Cumulative numbers** recorded to date: **198,455 cases**; **3,447 deaths** (CFR=1.7%) and **190,279 recoveries** (96% recovered). Of the total deaths, **2,587 have been classified as COVID-19 deaths** (CFR=1.3%) and **860 as associated deaths**. See [Annex 1](#) for definitions.
- **Currently**: there are **4,729 active cases**: of these, 4,354 (92%) are under community management and 375 (8%) hospitalised



Global Numbers

(Source: Worldometre)

 **201,380,995 Confirmed**
 **4,276,293 Deaths (2.1% CFR)**
 **181,285,928 Recoveries**

Africa Numbers

(Source: Africa CDC)

 **6,866,597 Confirmed**
 **174,054 Deaths (2.5% CFR)**
 **6,016,902 Recoveries**

2. EPIDEMIOLOGICAL HIGHLIGHTS

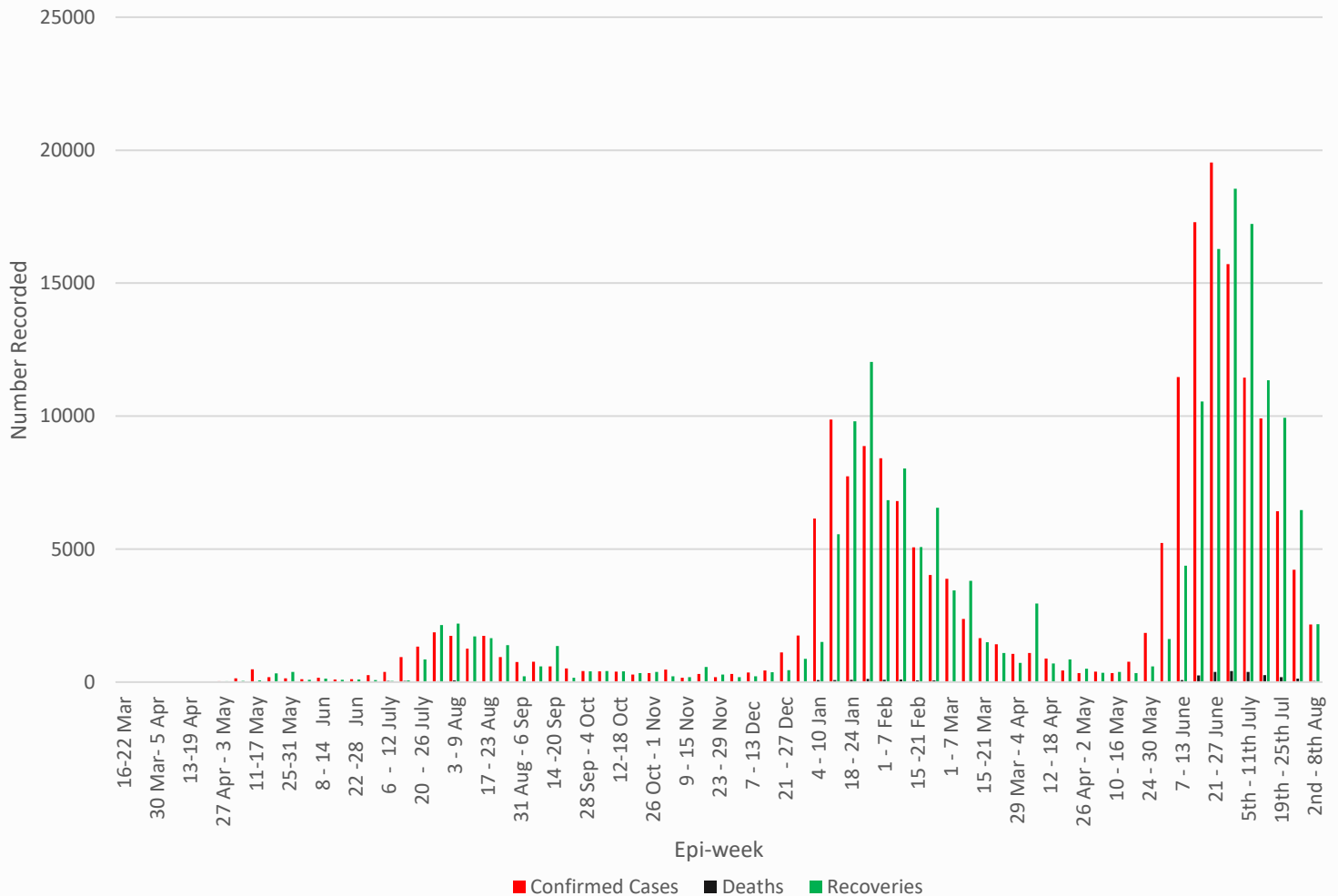


Figure 1: Epicurve of COVID-19 confirmed cases, deaths and recoveries by week, as of 5th August, 2021

3. ACTIONS TO DATE

3.1 CO-ORDINATION

- **Regional/Continental level:** Zambia continues to participate in AU meetings to ensure continued regional and continental trade and strategies to stop transmission of COVID-19. Zambia also hosts the Southern Africa Regional Collaborating Centre of the Africa CDC and has been coordinating the response at regional level. To date, Southern Africa has recorded 3,298,093 cases; 90,814 deaths; and 2,934,534 recoveries. Detailed updates on the COVID-19 statistics can be accessed on the [Africa CDC website](#), and the Vaccination Dashboard can be accessed [here](#)
- **National Level:** Government is implementing a **nine-pronged strategy** in response to the COVID-19 outbreak: **Surveillance and case finding; Case management; Infection prevention and control; Risk communication and community engagement; Laboratory diagnosis; Logistics and supply chain management; Appropriate competent and adequate workforce; Routine essential health services; and Vaccination.**
 - The **Incident Management System (IMS)** meets every Tuesday and Thursday via Zoom

3.2 SURVEILLANCE AND CLINICAL CASE MANAGEMENT

- Active surveillance is ongoing in healthcare facilities, at community level, through contact tracing and at points of entry. The surveillance and case management reports are provided in Table 1 and 2 below.

Table 1: Breakdown of new and cumulative cases, deaths and recoveries by province

PROVINCE	NUMBERS BY PROVINCE						
	New Cases	New Deaths	New Recoveries	Cumul. Cases	Cumul. Deaths	Cumul. Recoveries	Total Active
CENTRAL	97	0	34	16,988	129	16,518	341
COPPERBELT	104	1	55	27,207	715	25,834	658
EASTERN	86	3	112	19,588	305	18,647	636
LUAPULA	32	2	82	9,276	75	8,821	380
LUSAKA	65	4	68	63,437	1,433	61,663	341
MUCHINGA	54	0	75	8,439	67	7,903	469
NORTHERN	106	0	87	9,408	132	8,707	569
N/WESTERN	66	2	39	12,893	149	11,906	838
SOUTHERN	37	3	14	19,815	325	19,263	227
WESTERN	17	2	55	11,404	117	11,017	270
TOTAL	664 New Cases	17 New Deaths	621 New Recoveries	198,455 Cases	3,447 Deaths	190,279 Recoveries	4,729 Active

3.3 CLINICAL CASE MANAGEMENT

- All confirmed COVID-19 cases are managed either under facility or community models; the community management model and admission/discharge criteria for persons who test positive for COVID-19 available at **Annex 4**. The revised guidelines for the home management of COVID-19 cases can be accessed [here](#).
- In the last 24hrs, there were 53 new admissions. There are currently 375 patients hospitalised in COVID-19 facilities around the country. Of these, 255 (68%) are on oxygen therapy and 82 (22%) are in critical condition.

3.3 COVID-19 VACCINATION PROGRAMME

- The vaccination programme was officially launched on **Wednesday 14th April, 2021** by the Hon. Minister of Health, Dr. Jonas Chanda. Administration of Dose 1 was paused temporarily on 24th May, 2021 following a decision to ring fence the remaining doses for use as dose 2. Administration of Dose 2 of the AstraZeneca vaccine commenced on **Wednesday, 23rd June 2021**; **Dose 1** vaccinations resumed on Friday 9th July, 2021.
 - To date, 228,000 doses of AstraZeneca have been received under the COVAX facility and an additional 228,000 doses of AstraZeneca were donated by the Government of France through the COVAX facility (received in the country on 5th July, 2021). A further 151,200 doses of the Johnson and Johnson vaccine arrived in the country today, 21st July, 2021. Administration of the J&J commenced in Lusaka on 23rd July, 2021.
 - In the last 24 hours, **3,440 Dose 1 and 781 Dose 2 AstraZeneca vaccinations as well as 7,133 doses of Johnson and Johnson** were administered. Cumulatively to date, 286,023 Dose 1 and 101,411 Dose 2 AstraZeneca (35% of dose 1) **and** 65,091 doses of J&J have been administered. In addition, 6,899 Dose 1 and 6,336 Dose 2 Sinopharm (92% of dose 1) were administered in Lusaka and on the Copperbelt to Chinese nationals by their embassy.

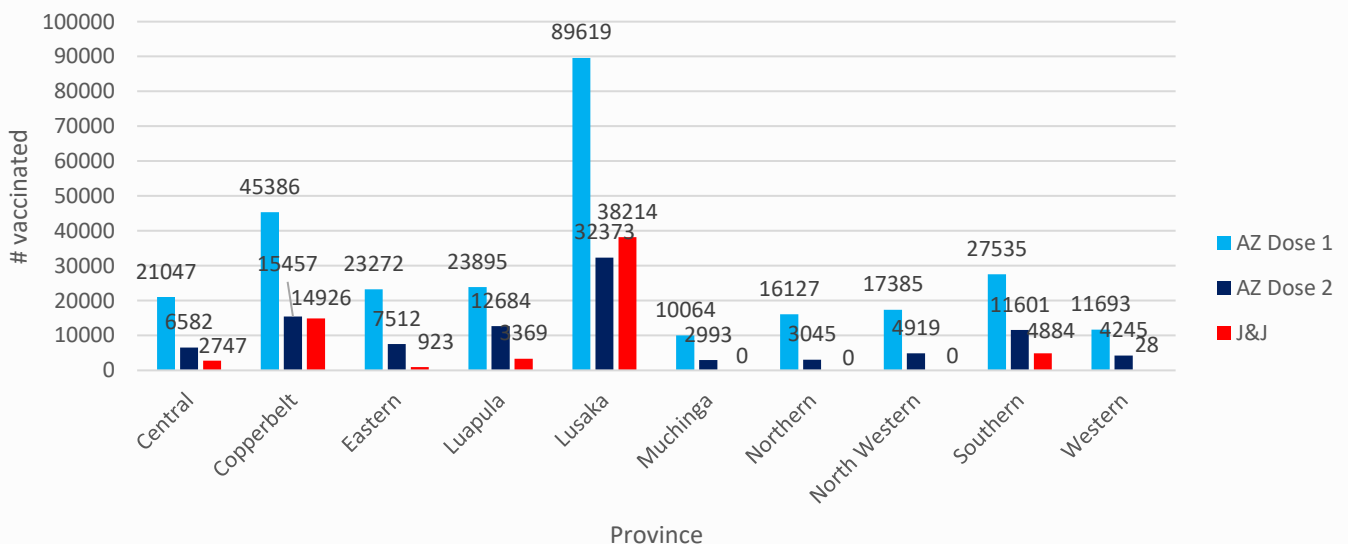


Figure 2: Distribution of cumulative AstraZeneca (Dose 1 and Dose 2) and J&J vaccinations by province, as of 5th August

3.4 LABORATORY AND SAMPLE MANAGEMENT

- Zambia is utilising a number of testing platforms, including real-time Polymerase Chain Reaction (RT-PCR), Gene Xpert, Hologic Panther, and Roche Cobas 6800, as well as Standard Q and Panbio Rapid Diagnostic Tests. See **Annex 5** for a list of the currently **designated diagnostic laboratories**. A list of testing centres can be found here: <https://arcg.is/15rqeP> and the revised testing strategy can be found [here](#).
- **Previous week analysis (26th July – 1st August): 42,595 tests were conducted in the previous week (10% tested positive for SARS-CoV-2) compared to 38,542 tests the week before last (17% positivity).**
- **Current week analysis (2nd – 8th Aug): In the last 24 hrs, 8,217 tests were conducted (8% positivity); the cumulative number of tests conducted this week now stands at 24,953 (9% positivity)**

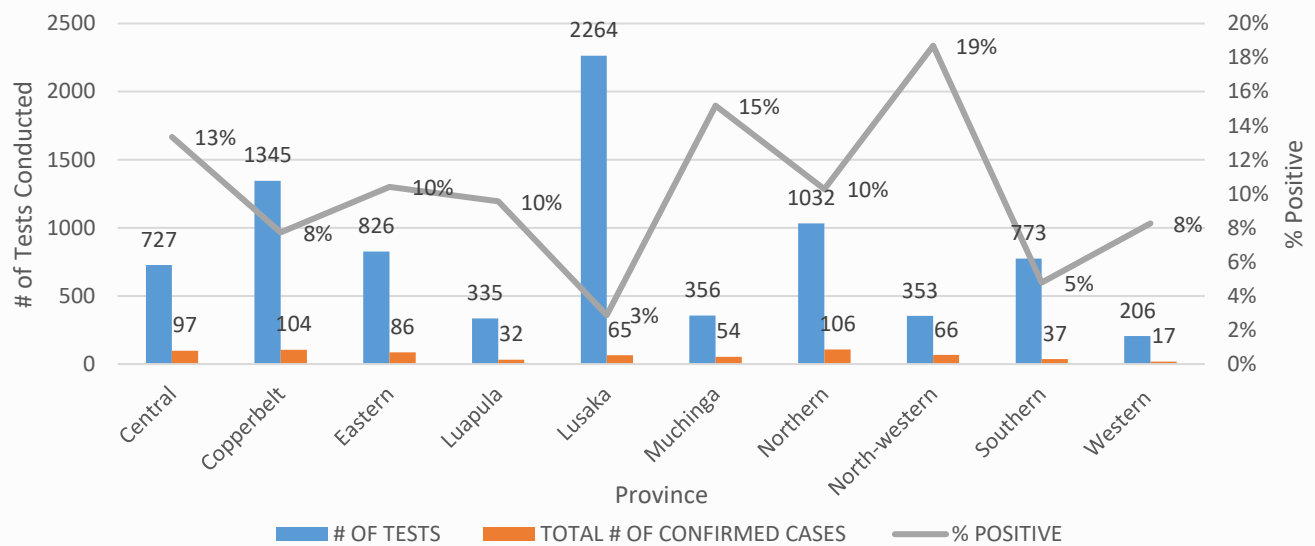


Figure 3: Number of tests by Province vs # of confirmed cases reported (5th Aug, 2021)

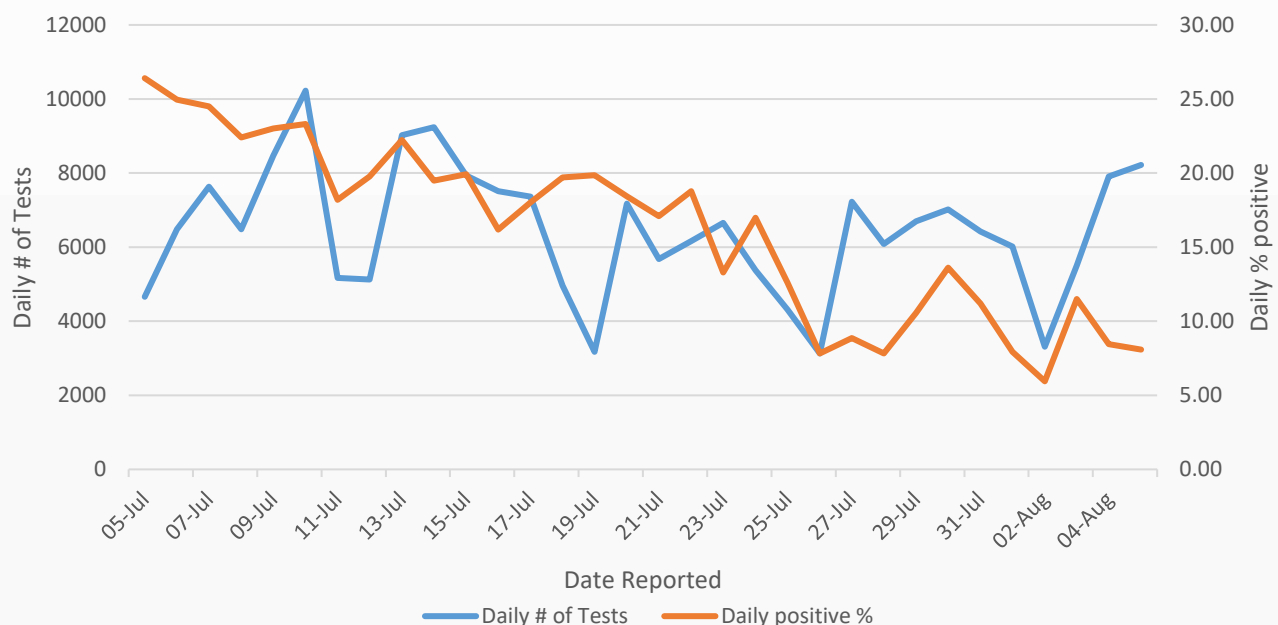


Figure 4: Daily number of tests vs % of positive results recorded (past month)

ANNEX 1: CORONAVIRUS DISEASE 2019 (COVID-19) CASE DEFINITIONS

1. Suspect case:

A. Patient with acute respiratory infection (fever and at least one sign/symptom of respiratory disease e.g. cough, shortness of breath), AND with no other aetiology that fully explains the clinical presentation AND a history of travel to or residence in a country/area or territory reporting local transmission of COVID-19 during the 14 days prior to symptom onset,

OR

B. Patient with any acute respiratory illness AND having been in contact with a confirmed or probable COVID-19 case in the last 14 days prior to symptom onset,

OR

C. Patient with severe acute respiratory infection (fever and at least one sign/symptom of respiratory disease e.g. cough, shortness of breath), AND requiring hospitalization AND with no other aetiology that fully explains the clinical presentation

2. Probable case: A suspect case for whom testing for COVID-19 is inconclusive or is tested positive using a pan-coronavirus assay and without laboratory evidence of other respiratory pathogens.

3. Confirmed case: A person with laboratory confirmation of COVID-19 infection, irrespective of clinical signs and symptoms.

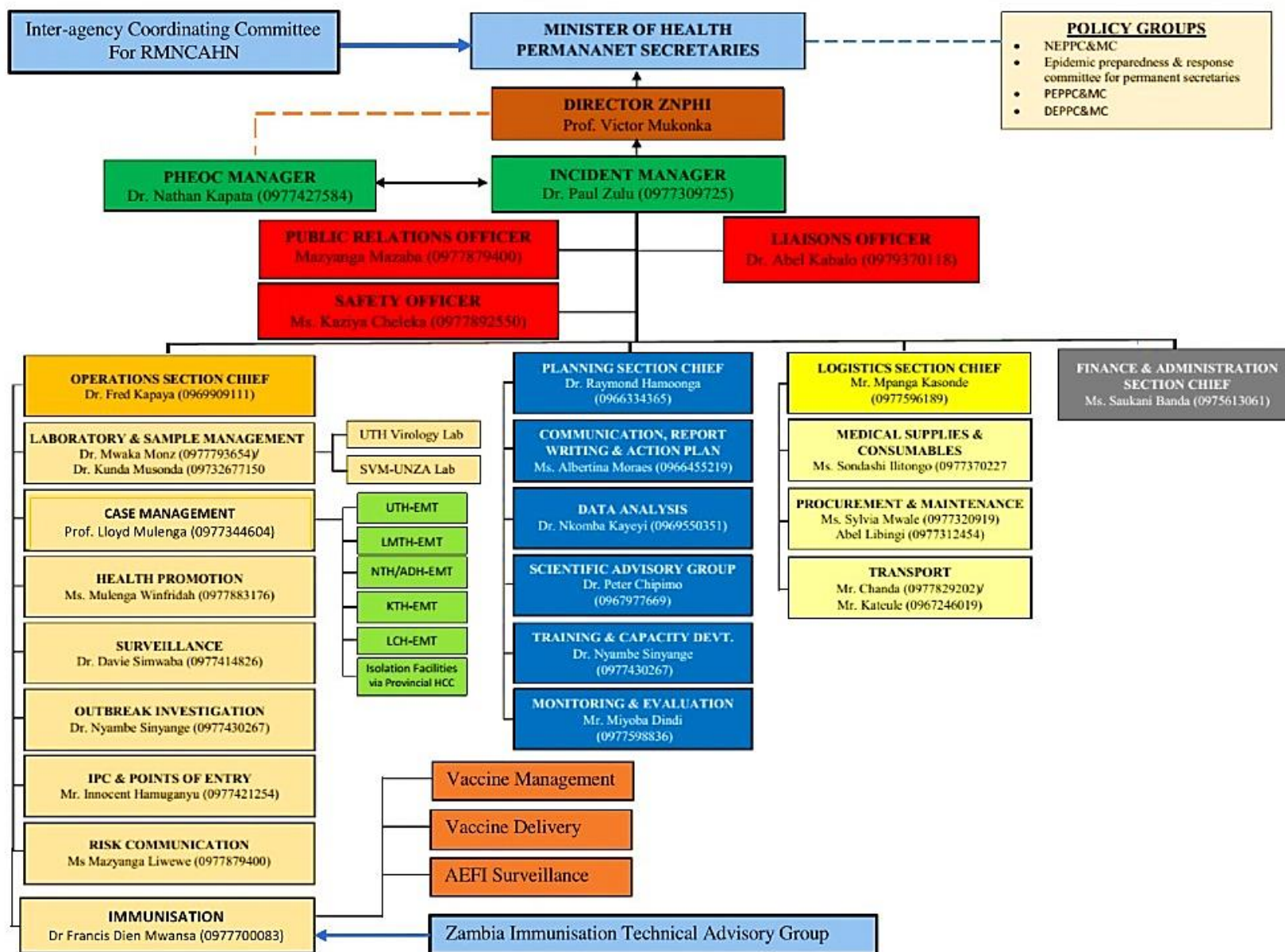
4. COVID-19 Death: COVID-19 death is defined for surveillance purposes as a death resulting from a clinically compatible illness in a probable or confirmed COVID-19 case, unless there is a clear alternative cause of death that cannot be related to COVID disease (e.g. trauma). There should be no period of complete recovery between the illness and death.

5. COVID-19 Associated Death: a death of an individual in whom COVID-19 has been detected but it is not the primary cause of death

6. COVID-19 Unclassified Death: a death of an individual in whom COVID-19 has been detected but the cause of death is yet to be classified as either a COVID-19 death or associated death following expert review

7. Contact: a person who experienced any one of the following exposures during the 2 days before and the 14 days after the onset of symptoms of a probable or confirmed case: a. Face-to-face contact with a probable or confirmed case within 1 meter and for more than 15 minutes; b. Direct physical contact with a probable or confirmed case; c. Direct care for a patient with probable or confirmed COVID-19 disease without using proper personal protective equipment; OR d. Other situations as indicated by local risk assessments.

ANNEX 2: NATIONAL LEVEL INCIDENT MANAGEMENT SYSTEM FOR THE COVID-19 PREPAREDNESS RESPONSE

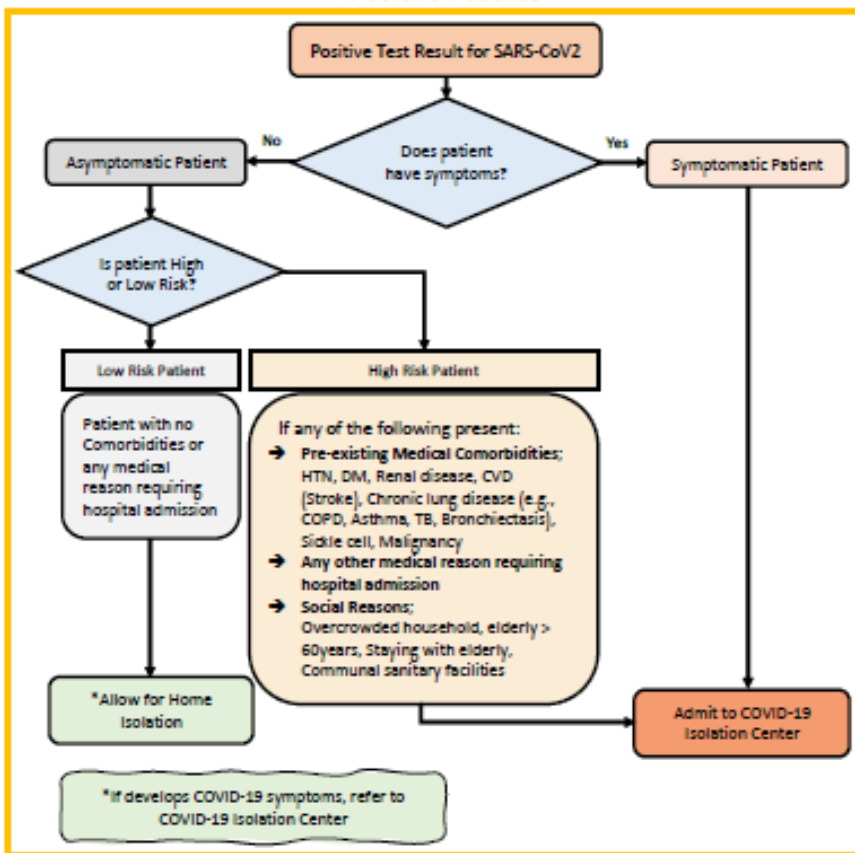


ANNEX 3: UPDATED PUBLIC HEALTH MEASURES TO CIRB COVID-19 IN ZAMBIA; WITH EFFECT FROM FRIDAY 16TH JULY, 2021

1. General Certificate of Education (GCE) and Grade 9 external examinations will be allowed to proceed and will be administered as scheduled on Monday 19th July 2021 under strict adherence to the COVID-19 guidelines.
2. Pre, primary and secondary schools to remain closed and re-open on Monday 16th August 2021 subject to the inspection and certification by the Ministries of General Education, Health in conjunction with the Disaster Management and Mitigation Unit (DMMU), depending on the evolution of the COVID-19 pandemic.
3. Universities, colleges and other institutions of higher learning to continue with on-line classes only for the next 21 days.
4. Bars and taverns to continue operating only on a take-away basis for the next 21 days.
5. Casinos and night clubs to remain closed for the next 21 days.
6. Restaurants to continue operating only on a take-away basis for the next 21 days.
7. Churches and other places of worship to conduct only two one-hour services per week.
8. Gymnasiums to remain closed for the next 21 days except for outdoor activities with strict adherence to the COVID-19 health guidelines.
9. Wedding parties, Chilanga mulilos, matebetos and kitchen parties remain suspended.
10. Funerals to only have 50 mourners.
11. Public transport operators must ensure masking up and physical distancing is always observed. Bus and train stations authorities to ensure full adherence to the Five (5) Golden Rules.
12. All Markets to ensure adherence to the public health guidelines in line with the Five (5) Golden Rules.
13. All physical conferences, workshops and general meetings remain suspended until further notice.

ANNEX 4: CASE MANAGEMENT MODELS

Community Model for COVID-19 Response for SARS-CoV2 Positive Patients



Admission and Discharge Criteria for Covid-19 Patients

S E T T I N G	Hospital/Facility Care	Patients with Medical Conditions requiring continued Care beyond COVID-19 Recovery	Home Care
A D M I S S I O N	<ul style="list-style-type: none"> → Any symptoms for COVID-19 → Asymptomatic High-Risk patients → Presence of other Medical conditions → Where Home Isolation is not feasible 	<ul style="list-style-type: none"> → As medically indicated 	<ul style="list-style-type: none"> → Asymptomatic → No comorbidity → If home Isolation feasible
D I S C H A R G E / D E I S O L A T I O N	<ul style="list-style-type: none"> → Asymptomatic for at least 3 days plus 1 negative PCR at day 7 or beyond AND → 14 days since first Positive PCR 	<ul style="list-style-type: none"> → Two negative PCR Tests at least 24 hours apart 	<ul style="list-style-type: none"> → 1 negative PCR at day 7 or beyond AND → 14 days since first Positive PCR

ANNEX 5: LIST OF DESIGNATED COVID-19 PCR DIAGNOSTIC LABORATORIES

PROVINCE	INSTITUTION
Central	Kabwe General Hospital
Copperbelt	TDRC, Ndola Arthur Davison Children's Hospital
Eastern	Chipata General Hospital
Luapula	Mansa General Hospital
Lusaka	Lusaka District: Coptic; CIDRZ; CFB; Levy; MedLand Hospital; UTH (Virology, ACOE, PCOE); UNZA – SVM; CIDRZ; CHAZ; Lancet; Victoria Hospital; ZNPHRL; Zambia Air Force Hospital; Untold Global Healt; Metropolis, Nature by Nature Chirundu district: Mtendere Mission Hospital
Muchinga	Chinsali General Hospital
Northern	Kasama General Hospital
North-western	Solwezi: Solwezi General Hospital; Kansanshi Mine Hospital (Mary Begg)
Southern	Macha Research Trust Livingstone Teaching Hospital
Western	Lewanika General Hospital

