

ZAMBIA COVID-19 SITUATION REPORT NO. 310

Disease Pandemic: COVID-19

Response start date: 30th January, 2020

Outbreak Declared: 18th March, 2020

Report date: Friday 6th August, 2021

Prepared by: MOH/ZNPPI/WHO

Correspondence: ims.covid@znphi.co.zm

1. SITUATION UPDATE *This week (2nd – 8th Aug)* **Cases 2,842** **Deaths 53** **Recoveries 3,058**

1.1 CURRENT NUMBERS (as of 09:00 hours CAT)

➤ In the last 24hrs: we recorded **680 new cases** out of 7,845 tests (9% positivity), **12 deaths** and **885 recoveries**

- **Cumulative numbers** recorded to date: **199,135 cases**; **3,459 deaths** (CFR=1.7%) and **191,164 recoveries** (96% recovered). Of the total deaths, **2,597 have been classified as COVID-19 deaths** (CFR=1.3%) and **862 as associated deaths**. See [Annex 1](#) for definitions.
- **Currently**: there are **4,512 active cases**: of these, 4,169 (92%) are under community management and 343 (8%) hospitalised

Global Numbers

(Source: Worldometre)

 **202,228,427 Confirmed**
 **4,287,620 Deaths (2.1% CFR)**
 **181,790,595 Recoveries**

Africa Numbers

(Source: Africa CDC)

 **6,930,871 Confirmed**
 **175,106 Deaths (2.5% CFR)**
 **6,056,726 Recoveries**

2. EPIDEMIOLOGICAL HIGHLIGHTS

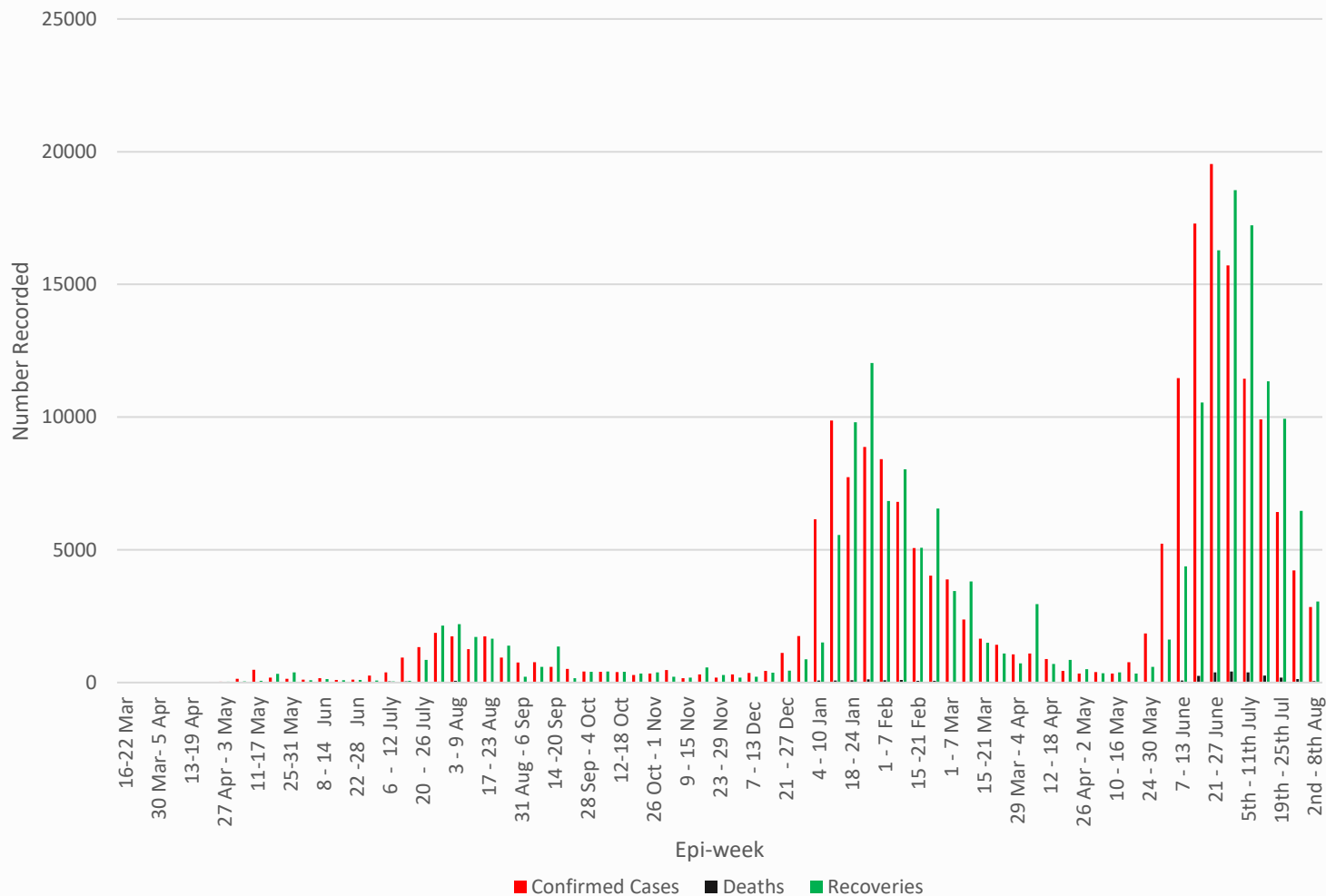


Figure 1: Epicurve of COVID-19 confirmed cases, deaths and recoveries by week, as of 6th August, 2021

3. ACTIONS TO DATE

3.1 CO-ORDINATION

- **Regional/Continental level:** Zambia continues to participate in AU meetings to ensure continued regional and continental trade and strategies to stop transmission of COVID-19. Zambia also hosts the Southern Africa Regional Collaborating Centre of the Africa CDC and has been coordinating the response at regional level. To date, Southern Africa has recorded 3,324,368 cases; 91,464 deaths; and 2,957,987 recoveries. Detailed updates on the COVID-19 statistics can be accessed on the [Africa CDC website](#), and the Vaccination Dashboard can be accessed [here](#)
- **National Level:** Government is implementing a **nine-pronged strategy** in response to the COVID-19 outbreak: **Surveillance and case finding; Case management; Infection prevention and control; Risk communication and community engagement; Laboratory diagnosis; Logistics and supply chain management; Appropriate competent and adequate workforce; Routine essential health services; and Vaccination.**
 - The **Incident Management System (IMS)** meets every Tuesday and Thursday via Zoom

3.2 SURVEILLANCE AND CLINICAL CASE MANAGEMENT

- Active surveillance is ongoing in healthcare facilities, at community level, through contact tracing and at points of entry. The surveillance and case management reports are provided in Table 1 and 2 below.

Table 1: Breakdown of new and cumulative cases, deaths and recoveries by province

| PROVINCE | NUMBERS BY PROVINCE | | | | | | |
|-------------------|----------------------|----------------------|---------------------------|----------------------|---------------------|---------------------------|---------------------|
| | New Cases | New Deaths | New Recoveries | Cumul. Cases | Cumul. Deaths | Cumul. Recoveries | Total Active |
| CENTRAL | 82 | 0 | 8 | 17,070 | 129 | 16,526 | 415 |
| COPPERBELT | 159 | 1 | 48 | 27,366 | 716 | 25,882 | 768 |
| EASTERN | 71 | 2 | 91 | 19,659 | 307 | 18,738 | 614 |
| LUAPULA | 45 | 0 | 45 | 9,321 | 75 | 8,866 | 380 |
| LUSAKA | 57 | 4 | 68 | 63,494 | 1,437 | 61,731 | 326 |
| MUCHINGA | 47 | 0 | 72 | 8,486 | 67 | 7,975 | 444 |
| NORTHERN | 53 | 4 | 99 | 9,461 | 136 | 8,806 | 519 |
| N/WESTERN | 105 | 1 | 398 | 12,998 | 150 | 12,304 | 544 |
| SOUTHERN | 37 | 0 | 32 | 19,852 | 325 | 19,295 | 232 |
| WESTERN | 24 | 0 | 24 | 11,428 | 117 | 11,041 | 270 |
| TOTAL | 680 New Cases | 12 New Deaths | 885 New Recoveries | 199,135 Cases | 3,459 Deaths | 191,164 Recoveries | 4,512 Active |

3.3 CLINICAL CASE MANAGEMENT

- All confirmed COVID-19 cases are managed either under facility or community models; the community management model and admission/discharge criteria for persons who test positive for COVID-19 available at **Annex 4**. The revised guidelines for the home management of COVID-19 cases can be accessed [here](#).
- In the last 24hrs, of the 680 new cases, 41 (6%) were hospitalised.
- 885 patients were discharged in total; of these, 50 (6%) were discharged from COVID-19 isolation centres
- Twelve deaths were recorded; 10 were classified as COVID-19 deaths and 2 as COVID-19 associated deaths
- There are currently 343 patients hospitalised in COVID-19 facilities around the country. Of these, 247 (72%) are on oxygen therapy and 78 (23%) are in critical condition.

3.3 COVID-19 VACCINATION PROGRAMME

- The vaccination programme was officially launched on **Wednesday 14th April, 2021** by the Hon. Minister of Health, Dr. Jonas Chanda. Administration of Dose 1 was paused temporarily on 24th May, 2021 following a decision to ring fence the remaining doses for use as dose 2. Administration of Dose 2 of the AstraZeneca vaccine commenced on **Wednesday, 23rd June 2021; Dose 1** vaccinations resumed on Friday 9th July, 2021.
 - To date, 228,000 doses of AstraZeneca have been received under the COVAX facility and an additional 228,000 doses of AstraZeneca were donated by the Government of France through the COVAX facility (received in the country on 5th July, 2021). A further 151,200 doses of the Johnson and Johnson vaccine arrived in the country today, 21st July, 2021. Administration of the J&J commenced in Lusaka on 23rd July, 2021.
 - In the last 24 hours, **4,251 Dose 1 and 985 Dose 2 AstraZeneca vaccinations as well as 7,133 doses of Johnson and Johnson** were administered. Cumulatively to date, 290,274 Dose 1 and 102,396 Dose 2 AstraZeneca (35% of dose 1) **and** 72,224 doses of J&J have been administered. In addition, 6,899 Dose 1 and 6,336 Dose 2 Sinopharm (92% of dose 1) were administered in Lusaka and on the Copperbelt to Chinese nationals by their embassy.

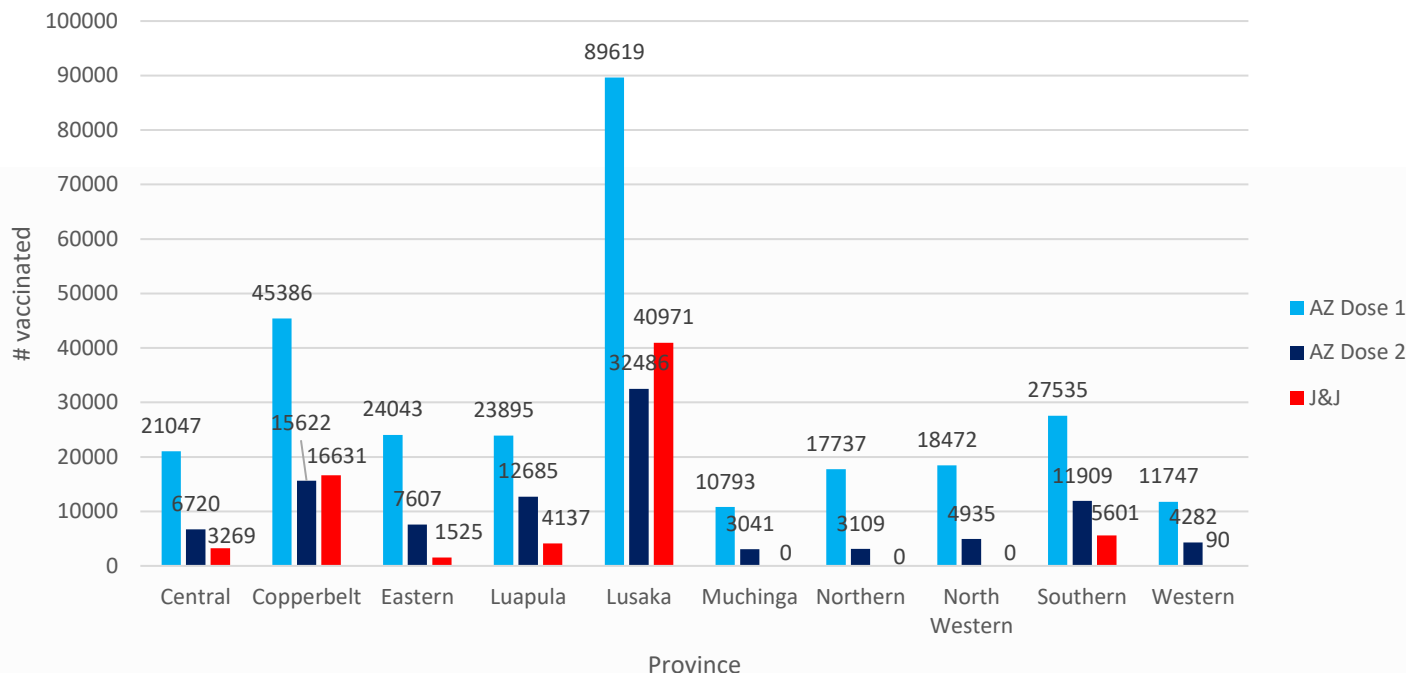


Figure 2: Distribution of cumulative AstraZeneca (Dose 1 and Dose 2) and J&J vaccinations by province, as of 6th August

3.4 LABORATORY AND SAMPLE MANAGEMENT

- Zambia is utilising a number of testing platforms, including real-time Polymerase Chain Reaction (RT-PCR), Gene Xpert, Hologic Panther, and Roche Cobas 6800, as well as Standard Q and Panbio Rapid Diagnostic Tests. See **Annex 5** for a list of the currently **designated diagnostic laboratories**. A list of testing centres can be found here: <https://arccg.is/15rqeP> and the revised testing strategy can be found [here](#).
- **Previous week analysis (26th July – 1st August):** 42,595 tests were conducted in the previous week (10% tested positive for SARS-CoV-2) compared to 38,542 tests the week before last (17% positivity).
- **Current week analysis (2nd – 8th Aug):** In the last 24 hrs, 7,845 tests were conducted (9% positivity); the cumulative number of tests conducted this week now stands at 32,798 (9% positivity)

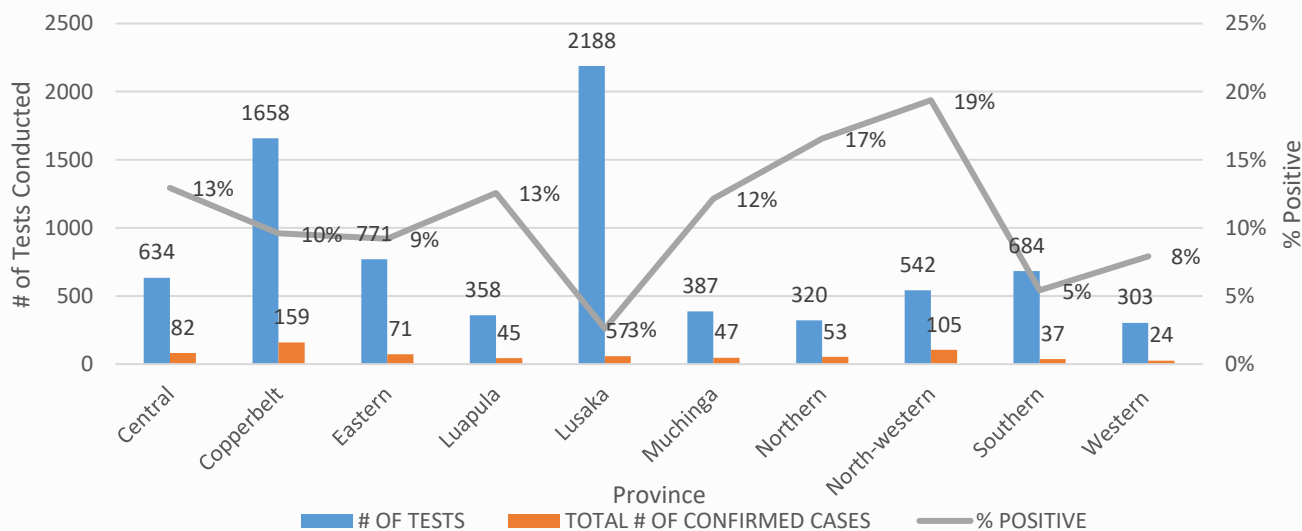


Figure 3: Number of tests by Province vs # of confirmed cases reported (6th Aug, 2021)

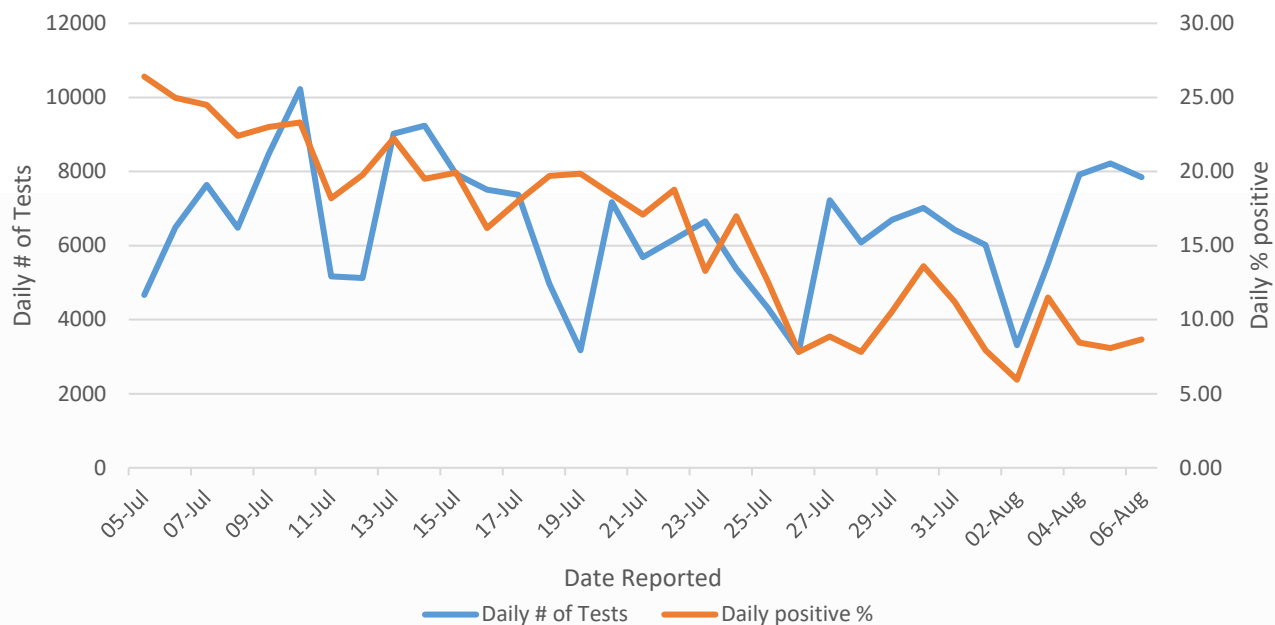


Figure 4: Daily number of tests vs % of positive results recorded (past month)

ANNEX 1: CORONA VIRUS DISEASE 2019 (COVID-19) CASE DEFINITIONS

1. Suspect case:

A. Patient with acute respiratory infection (fever and at least one sign/symptom of respiratory disease e.g. cough, shortness of breath), AND with no other aetiology that fully explains the clinical presentation AND a history of travel to or residence in a country/area or territory reporting local transmission of COVID-19 during the 14 days prior to symptom onset,

OR

B. Patient with any acute respiratory illness AND having been in contact with a confirmed or probable COVID-19 case in the last 14 days prior to symptom onset,

OR

C. Patient with severe acute respiratory infection (fever and at least one sign/symptom of respiratory disease e.g. cough, shortness of breath), AND requiring hospitalization AND with no other aetiology that fully explains the clinical presentation

2. Probable case: A suspect case for whom testing for COVID-19 is inconclusive or is tested positive using a pan-coronavirus assay and without laboratory evidence of other respiratory pathogens.

3. Confirmed case: A person with laboratory confirmation of COVID-19 infection, irrespective of clinical signs and symptoms.

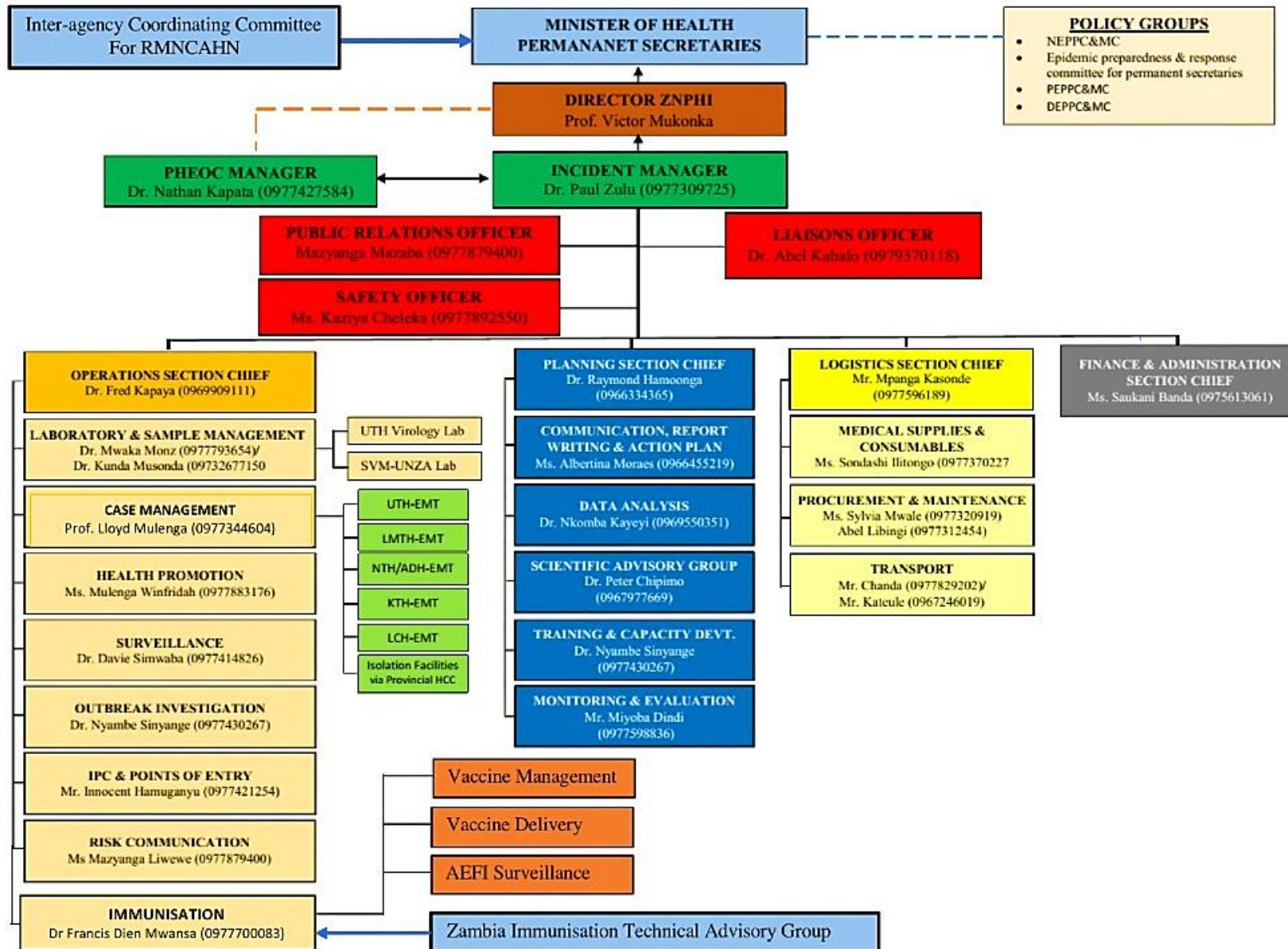
4. COVID-19 Death: COVID-19 death is defined for surveillance purposes as a death resulting from a clinically compatible illness in a probable or confirmed COVID-19 case, unless there is a clear alternative cause of death that cannot be related to COVID disease (e.g. trauma). There should be no period of complete recovery between the illness and death.

5. COVID-19 Associated Death: a death of an individual in whom COVID-19 has been detected but it is not the primary cause of death

6. COVID-19 Unclassified Death: a death of an individual in whom COVID-19 has been detected but the cause of death is yet to be classified as either a COVID-19 death or associated death following expert review

7. Contact: a person who experienced any one of the following exposures during the 2 days before and the 14 days after the onset of symptoms of a probable or confirmed case: a. Face-to-face contact with a probable or confirmed case within 1 meter and for more than 15 minutes; b. Direct physical contact with a probable or confirmed case; c. Direct care for a patient with probable or confirmed COVID-19 disease without using proper personal protective equipment; OR d. Other situations as indicated by local risk assessments.

ANNEX 2: NATIONAL LEVEL INCIDENT MANAGEMENT SYSTEM FOR THE COVID-19 PREPAREDNESS RESPONSE

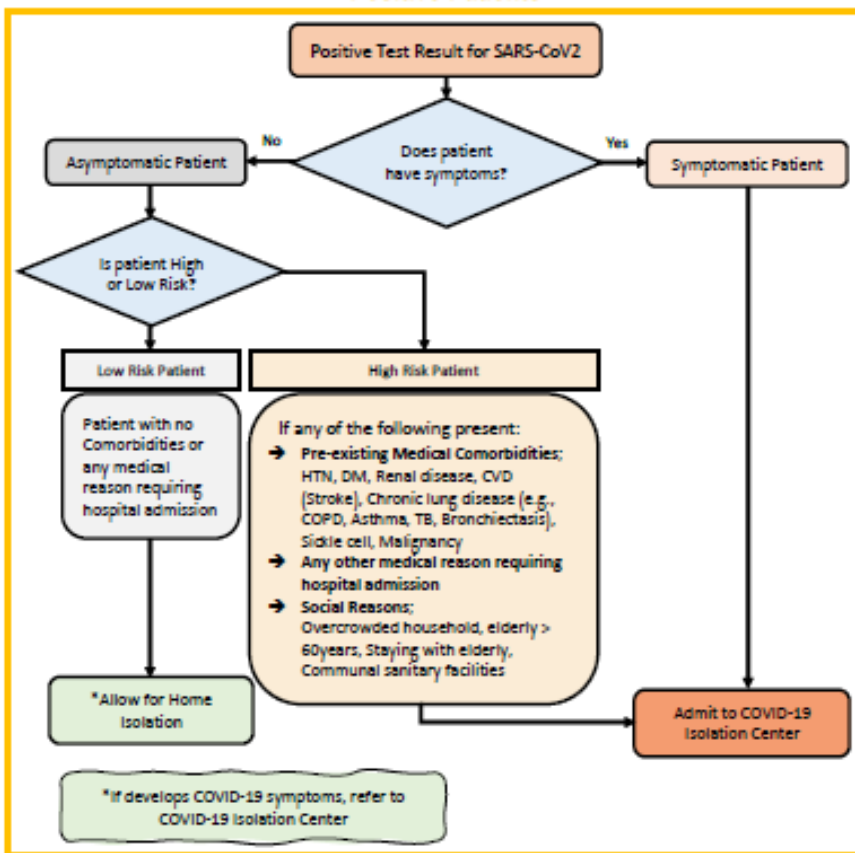


ANNEX 3: UPDATED PUBLIC HEALTH MEASURES TO CIRB COVID-19 IN ZAMBIA; WITH EFFECT FROM FRIDAY 16TH JULY, 2021

1. General Certificate of Education (GCE) and Grade 9 external examinations will be allowed to proceed and will be administered as scheduled on Monday 19th July 2021 under strict adherence to the COVID-19 guidelines.
2. Pre, primary and secondary schools to remain closed and re-open on Monday 16th August 2021 subject to the inspection and certification by the Ministries of General Education, Health in conjunction with the Disaster Management and Mitigation Unit (DMMU), depending on the evolution of the COVID-19 pandemic.
3. Universities, colleges and other institutions of higher learning to continue with on-line classes only for the next 21 days.
4. Bars and taverns to continue operating only on a take-away basis for the next 21 days.
5. Casinos and night clubs to remain closed for the next 21 days.
6. Restaurants to continue operating only on a take-away basis for the next 21 days.
7. Churches and other places of worship to conduct only two one-hour services per week.
8. Gymnasiums to remain closed for the next 21 days except for outdoor activities with strict adherence to the COVID-19 health guidelines.
9. Wedding parties, Chilanga mulilos, matebetos and kitchen parties remain suspended.
10. Funerals to only have 50 mourners.
11. Public transport operators must ensure masking up and physical distancing is always observed. Bus and train stations authorities to ensure full adherence to the Five (5) Golden Rules.
12. All Markets to ensure adherence to the public health guidelines in line with the Five (5) Golden Rules.
13. All physical conferences, workshops and general meetings remain suspended until further notice.

ANNEX 4: CASE MANAGEMENT MODELS

Community Model for COVID-19 Response for SARS-CoV2 Positive Patients



Admission and Discharge Criteria for Covid-19 Patients

| | | | |
|---|--|--|---|
| S E T T I N G | Hospital/Facility Care | Patients with Medical Conditions requiring continued Care beyond COVID-19 Recovery | Home Care |
| A D M I S S I O N | <ul style="list-style-type: none"> → Any symptoms for COVID-19 → Asymptomatic High-Risk patients → Presence of other Medical conditions → Where Home Isolation is not feasible | <ul style="list-style-type: none"> → As medically indicated | <ul style="list-style-type: none"> → Asymptomatic → No comorbidity → If home Isolation feasible |
| D I S C H A R G E / D E I S O L A T I O N | <ul style="list-style-type: none"> → Asymptomatic for at least 3 days plus 1 negative PCR at day 7 or beyond AND → 14 days since first Positive PCR | <ul style="list-style-type: none"> → Two negative PCR Tests at least 24 hours apart | <ul style="list-style-type: none"> → 1 negative PCR at day 7 or beyond AND → 14 days since first Positive PCR |

ANNEX 5: LIST OF DESIGNATED COVID-19 PCR DIAGNOSTIC LABORATORIES

| PROVINCE | INSTITUTION |
|----------------------|---|
| Central | Kabwe General Hospital |
| Copperbelt | TDRC, Ndola Arthur Davison Children's Hospital |
| Eastern | Chipata General Hospital |
| Luapula | Mansa General Hospital |
| Lusaka | Lusaka District: Coptic; CIDRZ; CFB; Levy; MedLand Hospital; UTH (Virology, ACOE, PCOE); UNZA – SVM; CIDRZ; CHAZ; Lancet; Victoria Hospital; ZNPHRL; Zambia Air Force Hospital; Untold Global Healt; Metropolis, Nature by Nature Chirundu district: Mtendere Mission Hospital |
| Muchinga | Chinsali General Hospital |
| Northern | Kasama General Hospital |
| North-western | Solwezi: Solwezi General Hospital; Kansanshi Mine Hospital (Mary Begg) |
| Southern | Macha Research Trust Livingstone Teaching Hospital |
| Western | Lewanika General Hospital |

