

## ZAMBIA SITUATION REPORT NO. 32

<b>Disease Outbreak:</b> COVID-19	<b>Response start date:</b> 30 <sup>th</sup> January, 2020	<b>Outbreak Declared:</b> 18 <sup>th</sup> March, 2020
<b>Date of report:</b> 19 <sup>th</sup> April, 2020	<b>Prepared by:</b> MOH/ZNPHI/WHO	<b>Correspondence:</b> <a href="mailto:ims.covid@znphi.co.zm">ims.covid@znphi.co.zm</a>

### ➤ SITUATION UPDATE

#### 1.1 CURRENT CASE NUMBERS



- As of 17:00 hours on Sunday, 19<sup>th</sup> April, 2020:
  - There were **4 new confirmed cases of COVID-19, no recoveries and 1 COVID-19 related death** recorded in the past 24 hours.
  - The total number of confirmed cases recorded to date is **61, with 3 deaths (CFR=4.92%) and 33 recoveries** (Refer to Annex 1).
  - There are currently 25 active cases; 22 in Lusaka, 2 on the Copperbelt and 1 in Kabwe. All cases (suspected/confirmed) are admitted to designated isolation facilities.

#### Zambia Statistics

 **61 Confirmed (4 new)**  
 **3 Deaths (1 new)**  
 **33 Recoveries (0 new)**

#### Global Statistics

(Source: Johns Hopkins University)

 **2,332,004 Confirmed (21,432 new)**  
 **160,767 Deaths (2,076 new)**  
 **597,220 Recoveries (1,894 new)**

*\*New: in the last 24hrs*

### 1. EPIDEMIOLOGICAL HIGHLIGHTS

Table 1: COVID-19 Summary surveillance and case management report

Parameter	Number
Cumulative number of high risk persons under observation	8,709
Cumulative number of high risk persons that have completed 14 days observation	2,482
Cumulative number of alerts notified & verified as non-cases	766
Number of suspected cases reported	30
Cumulative Number of Samples Received	3236
Total Number of Results Processed	2755
<b>Total Number of Confirmed COVID-19 Positive Cases</b>	<b>61</b>
Total number of currently isolated positive cases	25

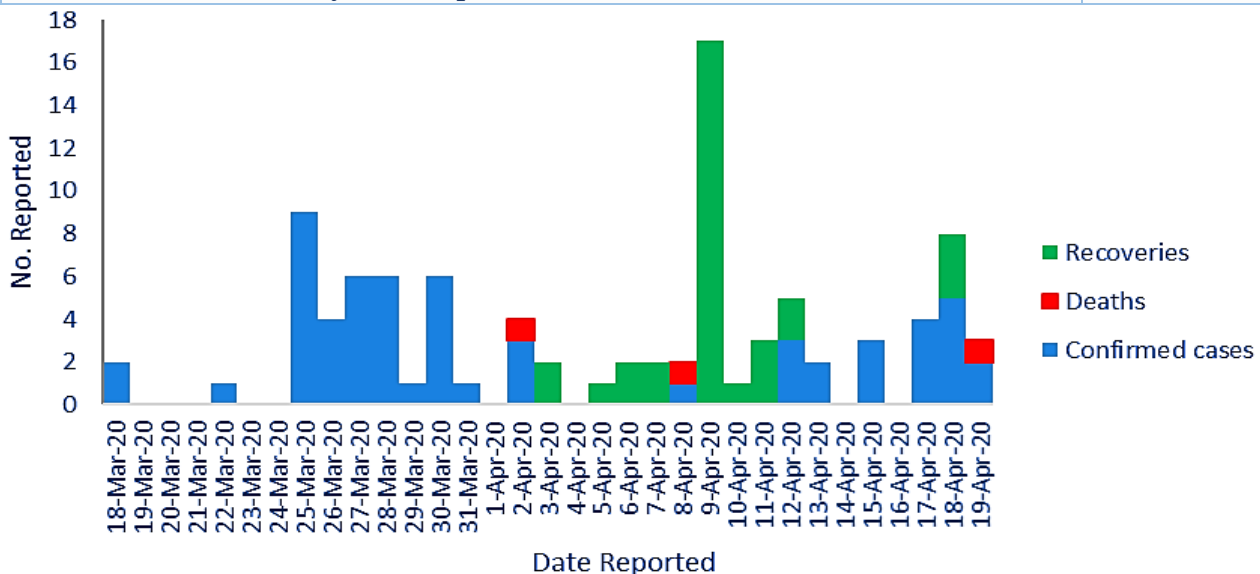


Figure 1: Epi-curve of COVID-19 confirmed cases (N=61), deaths (N=3) and recoveries (N=33) as of 19<sup>th</sup> April 2020

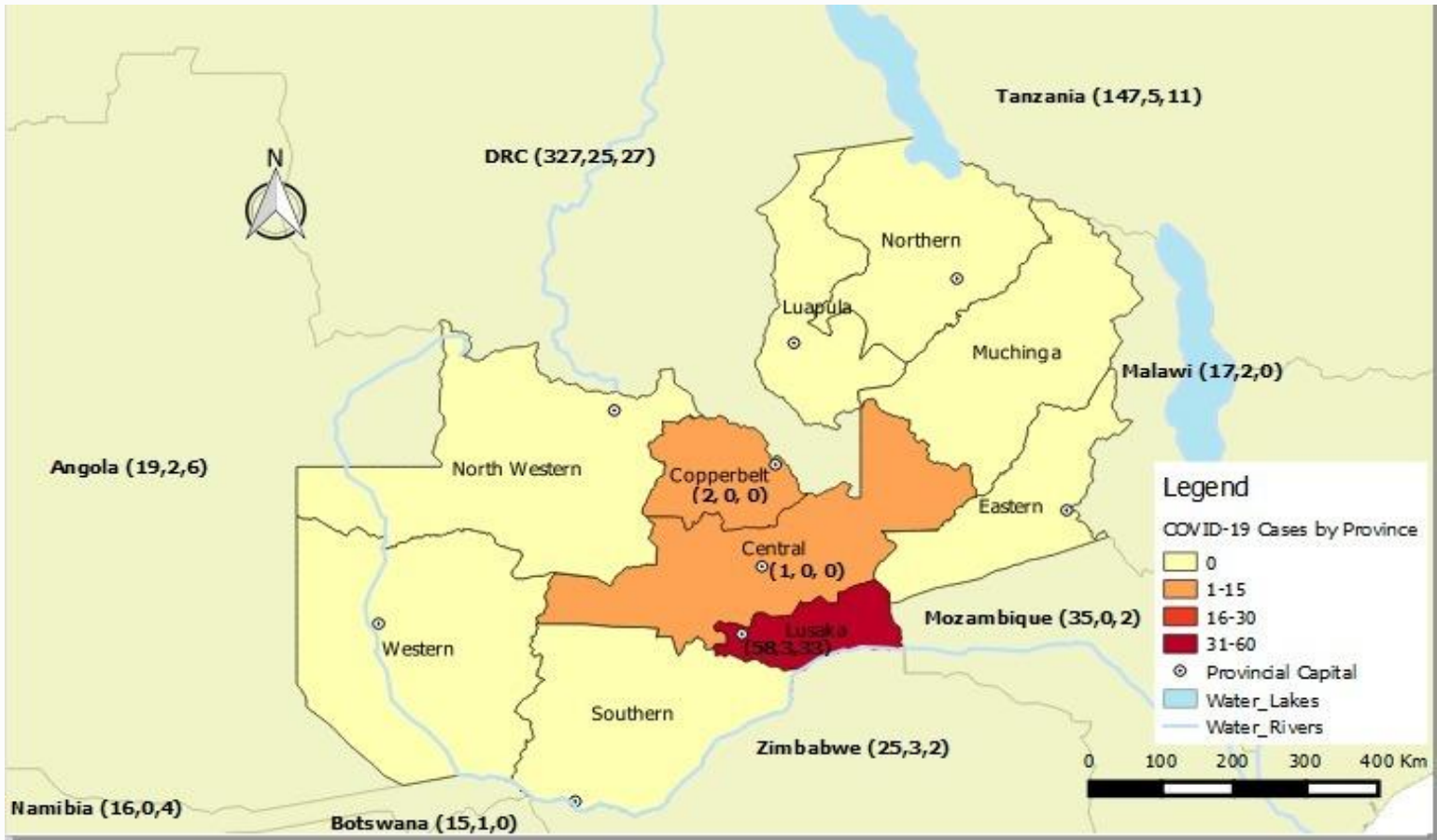


Figure 2: Map of Zambia showing confirmed COVID-19 cases, deaths and recoveries (in brackets) by province, as well as confirmed cases, deaths and recoveries (in brackets) in neighbouring countries as of 19<sup>th</sup> April 2020

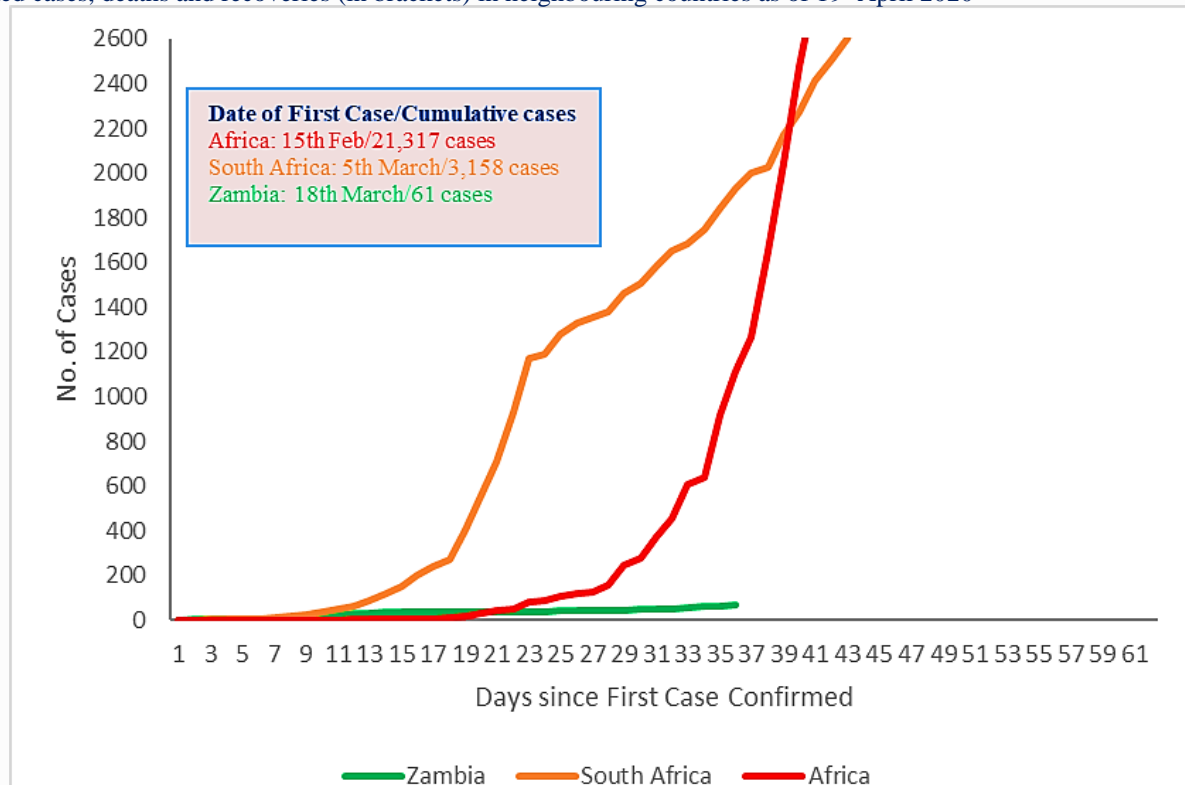


Figure 3: Cumulative trend graph comparing the number of confirmed cases in Zambia, South Africa and the whole Africa recorded during the first 60 days (Sources: MoH Zambia, NICD South Africa, Africa CDC)

Table 2: Summary of COVID-19 cases recorded country-wide as of 19<sup>th</sup> April 2020

Reporting Province	New Cases	Total Confirmed Cases	New Deaths	Total Deaths	New Recoveries	Total Recoveries	Transmission Classification	Days since last confirmed case reported
Lusaka	4	58	1	3	0	33	26 Imported 32 Local	0
Copperbelt	0	2	0	0	0	0	2 Imported	24
Central	0	1	0	0	0	0	1 Local	3
Southern	0	0	0	0	0	0	N/A	N/A
Eastern	0	0	0	0	0	0	N/A	N/A
Western	0	0	0	0	0	0	N/A	N/A
Northern	0	0	0	0	0	0	N/A	N/A
N/Western	0	0	0	0	0	0	N/A	N/A
Luapula	0	0	0	0	0	0	N/A	N/A
Muchinga	0	0	0	0	0	0	N/A	N/A
<b>Total</b>	<b>4</b>	<b>61</b>	<b>1</b>	<b>3</b>	<b>0</b>	<b>33</b>	<b>28 imported; 33 local</b>	

➤ **Age and Sex distribution:** The proportion of confirmed cases that are female increased from 33% to 36%. The most affected age group remains those aged between 15-30 years old, with 20 of the confirmed cases falling in this age bracket.

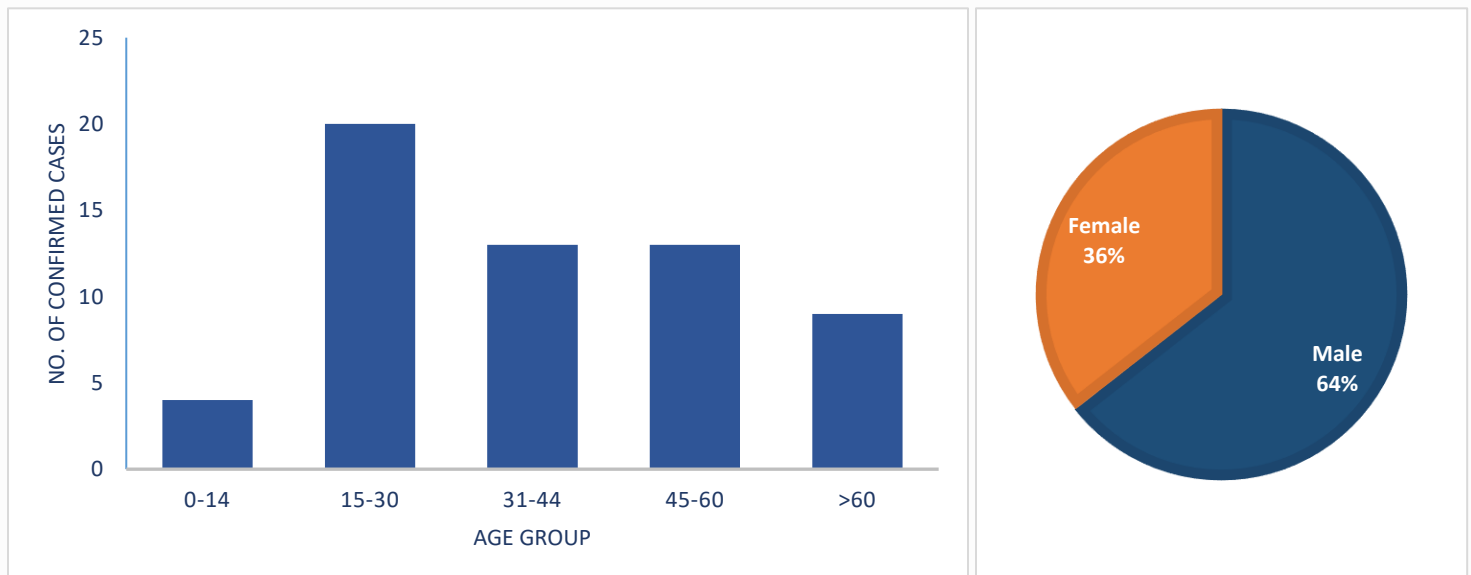


Figure 4: Age and Sex distribution of confirmed cases, as of 19<sup>th</sup> April 2020

## ➤ ACTIONS TO DATE

### 2.1 CO-ORDINATION

➤ **Regional/Continental level:** Zambia hosts the Southern Africa Regional Collaborating Centre of the Africa CDC and has been coordinating the response at regional level. To date, Southern Africa has recorded 3,249 confirmed cases of COVID-19 including 64 deaths and 965 recoveries. Zambia continues to participate in AU meetings to ensure continued regional and continental trade and strategies to stop transmission of COVID-19.

1. **Policy Level:** The government continues to enforce the measures and interventions to control the spread of COVID-19 countrywide as outlined in the Statutory instruments **SI21 and SI22 of 2020 on COVID-19 and presidential directives** issued in March 2020. The measures include wearing of a mask while out in public; continued screening of travellers into Zambia; redirection of all international flights to land and depart from KKIA only; suspension of non-essential travel to countries with confirmed COVID-19 cases; restriction of public gatherings; restaurants to operate only on take away and delivery basis; and closure of all bars, nightclubs, cinemas, gyms and casinos. Following continued disregard of quarantine directives, travellers into Zambia will now be isolated at designated facilities at own cost while awaiting test results.

- Meetings of the Committee of Ministers, Committee of Permanent Secretaries, and the National Epidemic Preparedness, Prevention Control and Management Committee (NEPPC&MC) have been convened since the declaration of the outbreak
- Press briefings are held daily on the evolving outbreak situation in Zambia.

➤ **Technical level:** The ZNPFI continues to provide leadership and partner collaboration on the response.

- The IMS continues to meet at the ZNPFI (with a Zoom link provided to ensure social distancing) on Tuesdays and Thursdays. (Refer to Annex 2 for structure)
- Technical co-ordinating meetings are being held with cooperating partners and other stakeholders. The meetings are chaired by the Director, ZNPFI
- All the response pillars under the IMS have an Incident Coordinator whose responsibility it is to map the partners and resources for the respective units to ensure no duplication of efforts and resources. Public Health Specialists in each of the sub-districts in Lusaka serve as Incident Commanders and coordinate daily activities of field teams.

## 2.2 SURVEILLANCE

Surveillance is being actively conducted around the country at community level, health facilities, points of entry (POEs), and sentinel sites. Efforts for rapid detection of any cases of COVID-19 in Lusaka, Kabwe and Kafue continue including testing, contact tracing, monitoring of persons under quarantine and adherence, verification and follow up of alerts and timely transport of cases to isolation facilities. Sub-district teams continue to carry out quarantine adherence monitoring, follow up of confirmed cases, contact tracing, follow up and verification of alerts, and risk communication

- **Case finding:** The profile of the four new cases reported is as follows:
  - 29-year-old female from Kafue Estates
  - 55-year old male from Kafue Railways
  - 26-year old female from Lusaka, Libala South (Health Care Worker)
  - 36-year old female from Lusaka, Chalala Serena (Health Care Worker).
  - The COVID-19 related death recorded was of a 19-year old female who was brought in to the Chilenje Hospital in critical condition after having attempted to commit suicide using a named herbicide which causes respiratory distress and multiple organ failure.
- **Contact Tracing:** Investigations to trace and screen all contacts remain in effect. Rapid response teams in Kafue and Lusaka continue to conduct mass screening and contact tracing. Surveillance teams also continue to actively follow up contacts of confirmed cases and community alerts.

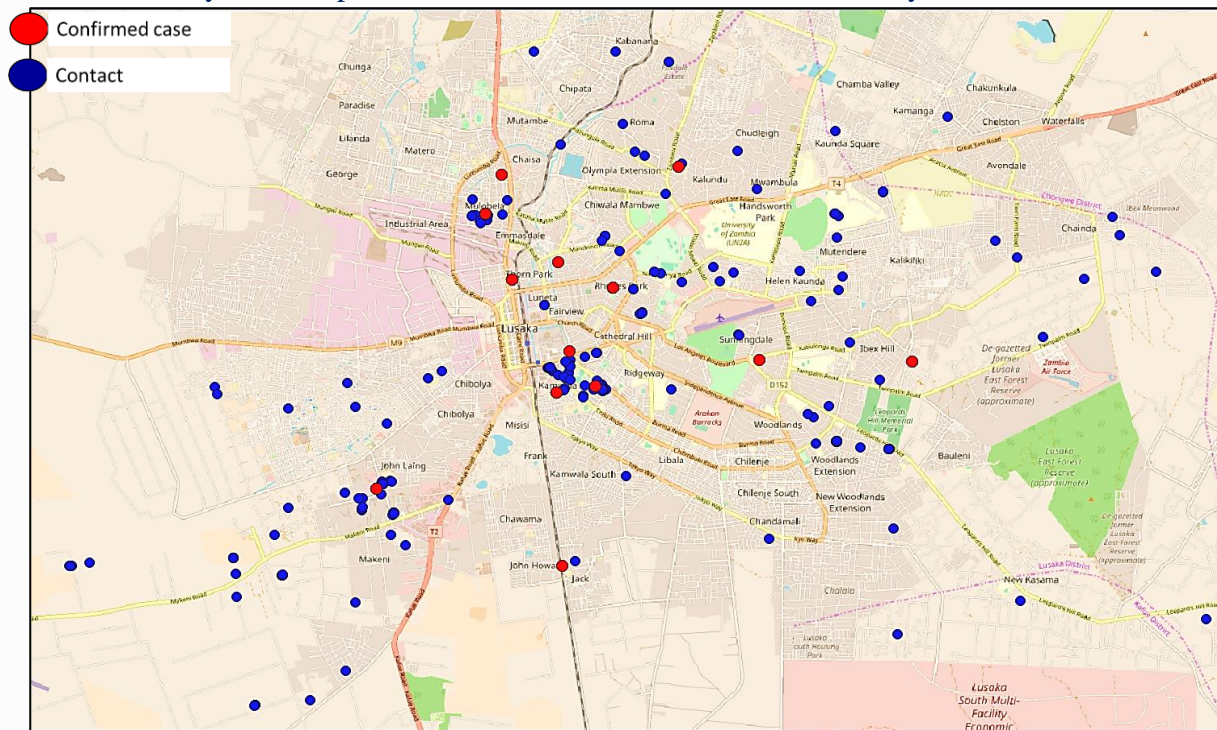


Figure 5: Distribution of confirmed cases and traced contacts on Lusaka, last updated 17<sup>th</sup> April 2020

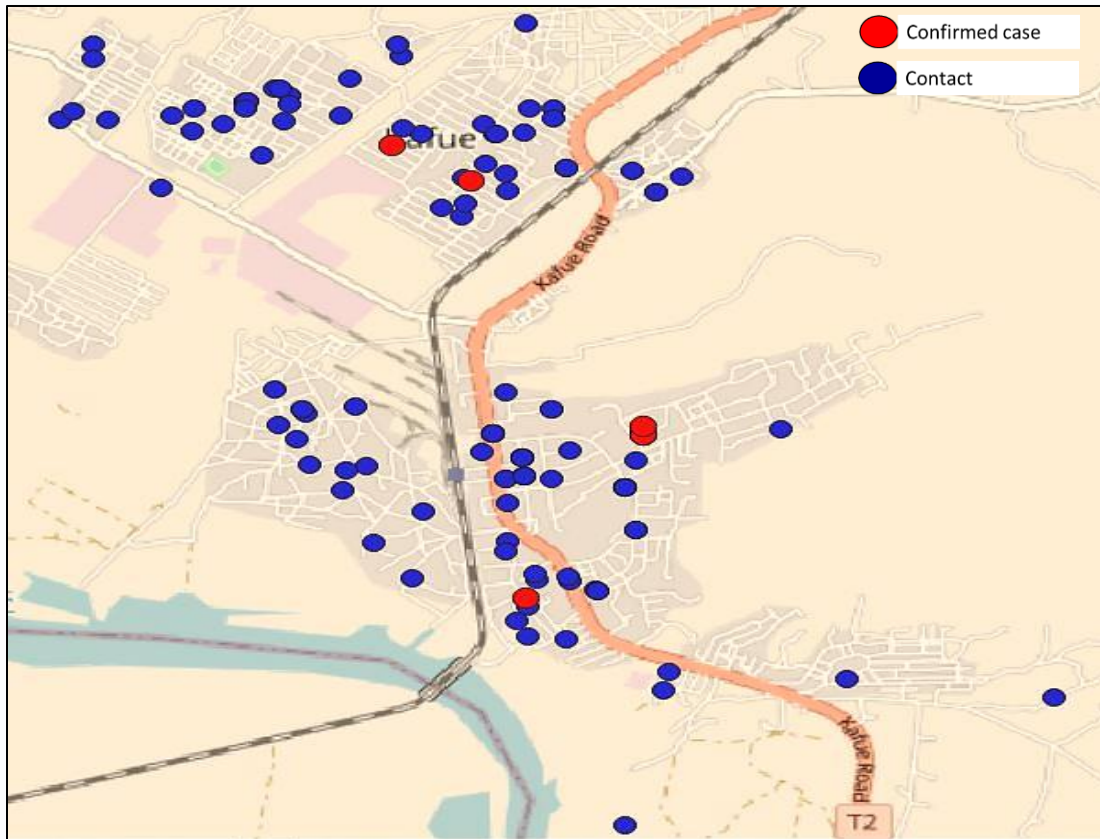


Figure 5: Distribution of confirmed cases and traced contacts on Kafue, last updated 18<sup>th</sup> April 2020

➤ **Update on cases reported on 18<sup>th</sup> April, 2020:**

- **Kafue:** Two new positives were isolated during the mass screening process. Forty-six (46) swabs were collected from contacts. Contact tracing, mass screening and testing continues.
- **Chilenje Cases:** Thirty people were tested, 2 of whom were positive

➤ **Points of Entry:** Active screening continues in all PoEs. Trucks entering the borders carrying essential commodities proceed to their destination under secure escort, at which point the drivers are placed under quarantine pending test results

➤ **Laboratory:** There are currently 3 designated laboratories for COVID-19 diagnostics, namely the University Teaching Hospital Virology Lab (UTHVL) (WHO-certified National Influenza Centre), the School of Veterinary Medicine (SVM), UNZA and the Tropical Diseases Research Centre (TDRC) on the Copperbelt. A sample referral system is in place for samples being collected in other provinces. Zambia is utilising **Polymerase Chain Reaction (PCR) testing** for COVID-19 diagnosis. Some rapid diagnostic testing (RDT) has been conducted using a total antibody test (IgM and IgG). The RDT has an 86.43% sensitivity and 99.57% specificity. However, preliminary data has shown that there is a higher likelihood of false positives and false negatives within the first 3-5 days of infection; sensitivity does

increase by day 8. Therefore, results from the RDT results have to undergo confirmatory testing with PCR.

- In the last 24 hours, **410 PCR tests** were conducted; **four (4)** of which were positive. A total of **3,236 samples** have been received to date; of these, **2,755 results** have been processed with **61 confirmed positive** for SARS-CoV-2. Summary of tests conducted to date is available in Annex 1
  - The standard turn-around time for the PCR test is 24 hours, but can take up to 36-48 hours where repeat or confirmatory testing is required
  - Testing of community alerts, suspects under quarantine, contacts of confirmed cases as well as re-testing of confirmed cases is ongoing.
  - **Criteria for testing:** individuals who meet the case definition or individuals who have had contact/been exposed to a confirmed positive case and/or are symptomatic. Testing is being expanded in all communities with confirmed cases.
- **Case Management:** All symptomatic cases (suspected, probable and confirmed) are admitted to the designated isolation facilities. *Patients are only considered recovered once they record two negative re-test results within a 24hour period.* Refer to Annex 1 for detailed summary. Additionally, all health workers are required to undergo 14-day quarantine following their shift at the isolation facilities before they return to their communities.
- **Levy Mwanawasa Hospital:** In the last 24 hours, the facility had 4 new admissions of confirmed cases and 1 death recorded. There are currently 22 patients admitted at the facility (all confirmed positive). All patients are stable.
  - **Masaiti District Hospital:** In the last 24 hours, the facility had no new admissions of confirmed cases; no recoveries were recorded. There are 2 confirmed positive cases still admitted; all patients are in a stable condition.
  - **Kabwe Mother, New-born and Children's Hospital:** In the last 24 hours, the facility had no new admissions; there is currently 1 confirmed case admitted.
  - **COVID-19 Screening Facilities:** Dedicated screening structures have been set up at the UTH and Levy Mwanawasa, away from the areas of routine service delivery.
  - **Isolation facilities** have also been set up in all high risk districts across the ten provinces; a detailed list is available at Annex 4

### 3. GAPS AND CHALLENGES

- **Laboratory:** Limited fridge/ freezer space for storage of accumulating samples
- **Surveillance and outbreak investigation:** non-adherence to self-quarantine and socio-distancing
- **RCCE:** Need mega phones & batteries; need transport to intensify PA to reach masses country wide; need transport and talk time for Health Promotion Officers; need incentives for community volunteers;
- **POEs:** require 1000 tablets to be supplied to all PoEs for real time monitoring (RTM); inadequate thermal scanners at POEs; data management; highly porous borders

### 4. PRIORITY ACTIONS AND RECOMMENDATIONS

- **Laboratory:** PCR testing of persons identified through serological screening of high risk communities in Kafue; commissioning of new freezers for COVID 19 samples
- **Surveillance and outbreak investigation:** Mass screening and contact screening in Kafue, Lusaka and Kabwe; continued active case finding, monitoring of quarantined persons and responding to community alerts country wide.
- **RCCE:** Intensify activities in Kafue and all the provinces; continue radio/television discussion programmes and announcements; continued review of IEC materials as the outbreak evolves
- **POE:** continued active screening at all POEs

### 5. CONCLUSION

In the last 24 hours, Zambia recorded 4 new confirmed cases of COVID-19, with 2 being health care workers. A Covid-19 related death was also recorded. Government continues to implement key measures to control the outbreak including screening and targeted testing in communities, POEs and health facilities, restriction of public gatherings, mandatory quarantine of travellers and closure of academic institutions and entertainment facilities.



### ANNEX 1: EPIDEMIOLOGICAL DATA AS OF 17:00HRS ON 19<sup>th</sup> APRIL 2020\*

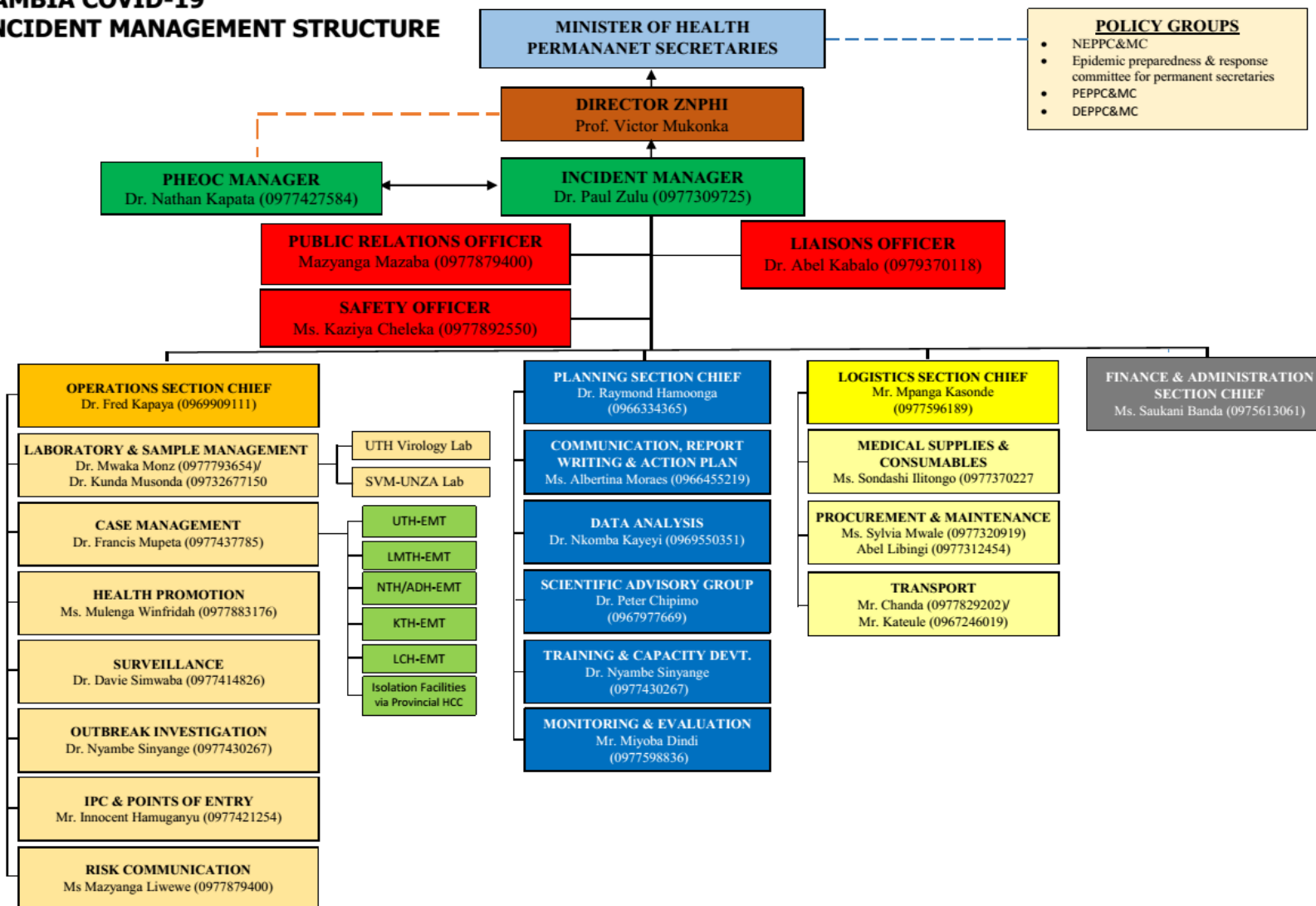
Total Cases	Daily Total			Cumulative since outbreak declared		
Suspected cases	30					
Confirmed cases	4			61		
Recovered	0			33		
<b>Diagnostics and Laboratory Testing</b>						
Samples received**	481			3236		
Samples with results processed	410			2755		
COVID-19 positive	4			61		
COVID-19 negative	406			2694		
Samples with results pending	481			-		
<b>Statistics By Health Facility</b>	<b>Kabwe MNC</b>	<b>Levy</b>	<b>Masaiti</b>	<b>UTH</b>	<b>Daily Total</b>	<b>Cumulative since outbreak declared</b>
<b>Admissions/Discharges</b>						
New Admissions	0	4	0	0	4	94
Currently Admitted	1	22	2	0	25	-
Discharges	0	0	0	0	0	66
Transferred in	0	0	0	0	0	7
Transferred out	0	0	0	0	0	7
<b>Deaths</b>						
Deaths among suspected cases	0	0	0	0	0	0
Deaths among lab confirmed cases	0	0	0	0	0	2

\*Reported figures may vary due to continual data cleaning and verification as part of quality assurance

\*\*Includes samples for re-test of confirmed positive cases

## ANNEX 2: NATIONAL LEVEL INCIDENT MANAGEMENT SYSTEM FOR THE COVID-19 PREPAREDNESS RESPONSE

### ZAMBIA COVID-19 INCIDENT MANAGEMENT STRUCTURE



## ANNEX 3: CORONAVIRUS DISEASE 2019 (COVID-19) CASE DEFINITIONS

### Case Definitions

#### 1. Suspect case:

A. Patient with acute respiratory infection (fever and at least one sign/symptom of respiratory disease e.g. cough, shortness of breath), AND with no other aetiology that fully explains the clinical presentation AND a history of travel to or residence in a country/area or territory reporting local transmission of COVID-19 during the 14 days prior to symptom onset,

**OR**

B. Patient with any acute respiratory illness AND having been in contact with a confirmed or probable COVID-19 case in the last 14 days prior to symptom onset,

**OR**

C. Patient with severe acute respiratory infection (fever and at least one sign/symptom of respiratory disease e.g. cough, shortness of breath), AND requiring hospitalization AND with no other aetiology that fully explains the clinical presentation

2. Probable case: A suspect case for whom testing for COVID-19 is inconclusive or is tested positive using a pan-coronavirus assay and without laboratory evidence of other respiratory pathogens.

3. Confirmed case: A person with laboratory confirmation of COVID-19 infection, irrespective of clinical signs and symptoms.

4. Person Under Investigation: a suspected case, irrespective of admission status, with either history of travel to an area with local transmission or worked in/attended a health care facility treating COVID-19 infections or admission to a facility for severe pneumonia of unknown aetiology

5. Contact: a person who experienced any one of the following exposures during the 2 days before and the 14 days after the onset of symptoms of a probable or confirmed case: a. Face-to-face contact with a probable or confirmed case within 1 meter and for more than 15 minutes; b. Direct physical contact with a probable or confirmed case; c. Direct care for a patient with probable or confirmed COVID-19 disease without using proper personal protective equipment; OR d. Other situations as indicated by local risk assessments.

#### ANNEX 4: LIST OF DESIGNATED ISOLATION FACILITIES FOR THE COVID-19 OUTBREAK RESPONSE

PROVINCE	DISTRICT	ISOLATION FACILITY
<b>Eastern</b>	Chipata	Walera HP and Chipata District Hospital
	Chadiza	Sadzu RHC and Chilenga HP
	Lundazi	Lundazi New Hospital Male Ward
	Mambwe	Agriculture Field Training Centre and ADRA shade in Nsefu
	Petauke	Zuze Health Post
	Katete	Katete Livestock Market
	Nyimba	Chininkhu Health Post
	Sinda	Ukasimbe Health Post and Chinzule HP
	Vubwi	Chigwe Health Post
	Kasenengwa	Kanzutu Health Post
	Lumezi	Lumezi Hospital, Mwasemphangwe Zonal and Mwanya RHC
	Chasefu	Kanyanga Mission Hospital
	Chipangali	Mkanda RHC and Chinunda RHC

<b>Southern</b>	Lusangazi	Ukwimi Trades
	Livingstone	Mosi Oa Tunya Health centre
	Zimba	Zimba Basic school
	Siavonga	Kabbila Health Post
	Pemba	Pemba Main Clinic
	Kalomo	Mawaya Clinic
	Monze	Mulumbwa Health Post
	Mazabuka	Research clinic
	Chikankata	Nansenga Rural Health centre
	Namwala	Nchole Health Post
	Choma	Njase Clinic
	Gweembe	Munyumbwe HAHC
	Kazungula	Kazungula hospital admin block
Sinazongwe	Sinazongwe rural health centre	
<b>Lusaka</b>	Chilanga	Tubalange Mini Hospital, Mount Makulu Health Post
	Chirundu	Lumbembe Clinic
	Kafue	Shikoswe Clinic
	Luangwa	Kavalamanja RHC, Chitpoe RHC, Kasinsa RHC, Mandombe RHC

	Lusaka	Levy Mwanawasa, UTH, Tubalange Mini Hospital, Chawama SD, Matero SD, Chilenje SD, Kanyama SD, Chipata SD, Victoria Hospital, Bauleni
	Rufunsa	Rufunsa RHC, Chinyunyu RHC
<b>Muchinga</b>	Isoka	Lualizi and Kafwimbi RHC
	Lavushimanda	Red Rhino school, Muwele Market .
	Nakonde	Nakonde Hospital and Nakonde Urban Clinic.
	Chama	FTC
	Shiwang'andu	Lwanya RHC
	Mpika	Chibansa RHC
	Kanchibiya	Kopa Primary school ,LuchembeKanchibiya resettlement scheme,Chalabesa RHC.

	Chinsali	Nambuluma RHC
	Mafinga	Mulekatembo
<b>Western</b>	Senanga	Litambya RHC
	Shangombo	Shangombo Secondary School
		Shangombo RHC
	Kaoma	Kaoma Trades
		Kaoma Youth Resource Centre
	Luampa	Kahumbu Primary School
	Lukulu	Lukulu Old Hospital
	Mitete	Lukulu Old Hospital
	Kalabo	Wenela RHC
	Nalolo	Muoyo RHC
	Sioma	Old Nangwesh Refugee Camp
Mulobezi	Mulobezi HAHC	
Mwandi	Situlu Health Post	

	Sesheke	Mulimambango
	Sikongo	Sikongo RHC
	Limulunga	Nan'oko Health Post
	Mongu	Mongu D Hospital, Mweeke HP
	Nkeyema	Nkeyema Zonal Health Centre
<b>Central</b>	Chitambo	Muchinka RHC
	Mkushi	Kasalamkanga RHC
	Serenje	Serenje Boma School
	Iuano	Old Mkushi Health Centre
	Kapiri	Tazara dry port
	Kabwe	Old Mukobeko clinic
	Chibombo	Twalumba RHC
	Chisamba	Malombe RHC
	Shibuyunji	Sichobo Rural Health Centre
	Mumbwa	Mumbwa Urban Clinic

	Itezhi tezhi	Itezhi tezhi Basic School/Uphill Scholl and and Itezhi Tezhi Boarding School
	Ngabwe	Iwonde primary school
<b>Copperbelt</b>	Chililabombwe	Council Hall
	Chingola	Kalilo Health Centre
	Kalulushi	Kalulushi Urban Health Centre
	Kitwe	Garnerton Clinic
	Luanshya	Chibolya Clinic
	Lufwanyama	Shimukunami Rural Health Centre
	Masaiti	Masaiti District Hospital
	Mpongwe	Bwembelelo Health Post
	Mufulira	Mutundu RHC
	Ndola	Itawa clinic
	Mushidamo	Kichikwe RHC

<b>North-western</b>	Solwezi	SGH/Solwezi College of Nursing
	Kalumbila	Nkulumazhiba Health Facility
	Mwinilunga	Farmers Training College
	Ikelenge	Sachibondu Mission RHC
	Ikelenge	Mukangala RHC (Secondary site)
	Kasempa	Mukinge Mission
	Mufumbwe	Mufumbwe Day Secondary Sch
	Manyinga	Loloma Mission Hospital
	Kabompo	Government Guest House
	Zambezi	Chilenga Health Facility
	Chavuma	Chavuma District Hospital
<b>Northern</b>	Chilubi	Chaba RHC Chilubi RHC
	Kaputa	Kaputa RHC Kalaba RHC Kapepula HP

	Kasama	Lukupa Rural Centre
	Lunte	Chitoshi RHC Mukupa Koama RHC Mulenga Mapesa HP
	Lupososhi	Chungu RHC Nsombo RHC
	Luwingu	Ipusikilo RHC
	Mbala	Chulungoma Urban Clinic Kaluluzi Health Post
	Mporokoso	Township Clinic Chiwala RHC
	Mpulungu	Mpulungu Urban Clinic
	Mungwi	Mungwi Baptist HC, Kayambi RHC
	Nsama	NsumbuRHC
	Senga	Nsumbu RHC, Mwiluzi HP, Sumbi HP

