

## SITUATION REPORT NO. 8

**Disease Outbreak:** COVID-19

Response start date: **30<sup>th</sup> January, 2020**

**Date of report:** 26<sup>th</sup> March, 2020

**Prepared by:** MOH/ZNPPI/WHO

**Country:** Zambia

**Correspondence:** [ims.covid@znphi.co.zm](mailto:ims.covid@znphi.co.zm)

### 1. CURRENT SITUATION UPDATE

➤ **Highlights:** As of 18hrs on 26<sup>th</sup> March 2020:

- There were **four (4) new confirmed cases** recorded in the past 24 hours (3 in Lusaka and 1 on the Copperbelt). The total number of confirmed cases is **sixteen (16)**. **There have been zero (0) deaths recorded**
- **Levy Mwanawasa Hospital (Lusaka):** There are currently seventeen (17) patients admitted at Levy Mwanawasa Hospital in Lusaka: 15 confirmed positive; 1 negative; and 1 suspected cases (with results pending); there were no discharges (Refer to Annex 1)
- **Masaiti District Hospital (Copperbelt):** There is currently one (1) confirmed positive case admitted

#### Zambia Current Numbers

 **16 Confirmed (4 new)**

 0 Deaths (0 new)

 0 Recoveries (0 new)

#### Global Numbers as of 25/03/20

(Source: WHO)

 **414,179** confirmed (40,712 new)

 18,440 deaths (2,202 new)

*\*New: in the last 24hrs*

Table 1: COVID-19 Cumulative surveillance and case management report as of 26<sup>th</sup> March 2020

| Parameter   | Number |
|---|--------|
| Total Number of Suspected COVID-19 Cases                            | 72     |
| Total Number of Confirmed COVID-19 Positive Cases                   | 16     |
| Number of high risk persons under observation                       | 2,864  |
| Number of high risk persons that have completed 14 days observation | 640    |
| Number of alerts notified & verified as non-cases                   | 135    |

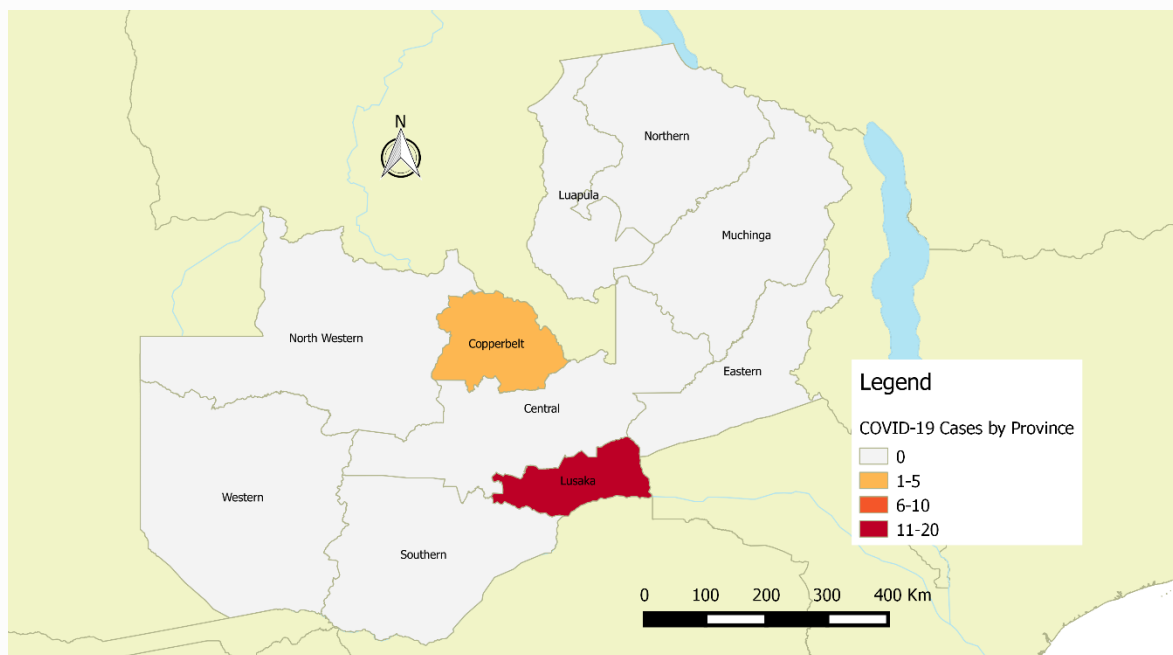


Figure 1: Map of Zambia showing confirmed COVID-19 cases by province as of 26th March 2020

## 2. ACTIONS TO DATE

### 2.1 CO-ORDINATION

- **Policy Level:** Government measures and interventions to control the spread of COVID-19 will come into effect at midnight tonight, Thursday 26<sup>th</sup> March, 2020. The measures include continued screening of travellers into Zambia (symptomatic travellers will be isolated at a health facility; asymptomatic travellers are required to undergo quarantine at their own cost and monitoring for at least 14 days); redirection of all international flights to land and depart from KKIA only; suspension of non-essential travel to countries with confirmed COVID-19 cases; restriction of public gatherings to no more than 50 people; restaurants to operate only on take away and delivery basis; and closure of all bars, nightclubs, cinemas, gyms and casinos.
- **Technical level:** The IMS continues to meet on Tuesdays and Thursdays. (Refer to Annex 2 for the IMS structure)

### 2.2 SURVEILLANCE

- **POE, health facility, sentinel site and Event Based Surveillance:** surveillance data is being collected from all these sites and remains heightened country wide.
  - The number of cases reported country-wide is summarised in the table 2 below
  - Standard case definitions are being used (Refer to Annex 3).

| Reporting Province | New Cases | Total Confirmed cases | New Deaths | Total Deaths | Transmission classification | Days since last reported case<br>Date since last confirmed discharged |
|--------------------|-----------|-----------------------|------------|--------------|-----------------------------|---|
| Lusaka             | 3         | 15                    | 0          | 0            | Imported/local              | 0   |
| Copperbelt         | 1         | 1                     | 0          | 0            | Imported                    | 0   |
| Central            | 0         | 0                     | 0          | 0            | N/A                         | 0   |
| Southern           | 0         | 0                     | 0          | 0            | N/A                         | 0   |
| Eastern            | 0         | 0                     | 0          | 0            | N/A                         | 0   |
| Western            | 0         | 0                     | 0          | 0            | N/A                         | 0   |
| Northern           | 0         | 0                     | 0          | 0            | N/A                         | 0   |
| N/Western          | 0         | 0                     | 0          | 0            | N/A                         | 0   |
| Luapula            | 0         | 0                     | 0          | 0            | N/A                         | 0   |
| Muchinga           | 0         | 0                     | 0          | 0            | N/A                         | 0   |
| <b>Total</b>       | <b>4</b>  | <b>16</b>             | <b>0</b>   | <b>0</b>     |                             |   |

- Coordination and response structures have been set up provincial level; plans and budgets have been developed and submitted to national level for approval and support.

- All airports except KKIA have been closed to international flights; screening at KKIA and ground crossings has been intensified.
- Additional contact tracing teams have been dispatched to Copperbelt and Southern provinces. Training of more contact tracers to build capacity is underway.
- **Laboratory:**
  - Four additional samples were confirmed positive for SARS-CoV-2. Summary of tests conducted to date is available in Annex 1
  - Training for lab staff currently underway, with staff from private facilities to be incorporated
- **Case Management:** Refer to Annex 1 for detailed summary
  - **Isolation facilities** have been set up in all high risk districts across the ten provinces; an assessment of each was conducted. The report will be shared with all partners once finalised
  - **Levy Mwanawasa Hospital:** 12 patients currently admitted (10 confirmed positive; 1 suspected (results pending); 1 negative). Screening structures have been set up at the facility
  - **Tubalange Hospital:** there are currently no cases admitted at the facility
  - **University Teaching Hospital:** Screening structures have been set up here as well. There are currently no patients admitted at the facility
  - **Masaiti District Hospital:** There is currently 1 confirmed positive case admitted at the facility

### 2.3 LOGISTICS

- Supplies catalogued at Medical Stores Limited so far include:
  - 208 test kits able to run 96 reactions
  - 52,000 facemasks and 1000 plastic face shields
  - 48,500 N95 masks
  - 1100 pieces of coveralls

### 2.4 Health Promotion

- Review of IEC materials underway to reflect the evolving pandemic with inclusion of messages on quarantine, isolation, and social distancing.
- IEC materials received from ZAMBEEF and WaterAID
- Installation of equipment at ZNP HI for dedicated call centre scheduled and to be completed in 48hours.

### 3. GAPS AND CHALLENGES

- **Case Management:** vent scale up and additional oxygen concentrators required
- **Logistics:** logistical supplies pledged by partners yet to be delivered; currently on GRZ procured items are in use.
- **Surveillance:** swabs for sample collection urgently required; need to scale up/decentralise testing to provinces with quality assurance mechanisms in place

### 4. PRIORITY ACTIONS AND RECOMMENDATIONS

- **Case management:** WHO procurement process initiated to scale up vent support and increase number of available oxygen concentrators; provision of psychosocial care for staff and patients at the isolation facilities.
- **Logistics:** Sanket Laboratories has a plane prepositioned and ready to import masks and gloves from India; Logistics team to provide necessary linkages and guidance
- **Surveillance:** explore possibility of using high throughput instruments (2 identified), Gene Xpert, and high level labs in order to reduce test turn-around time and through-put.
- **Health promotion:** orientation of marketeers, transporters as well as the differently-abled scheduled for next week

### 5. CONCLUSION

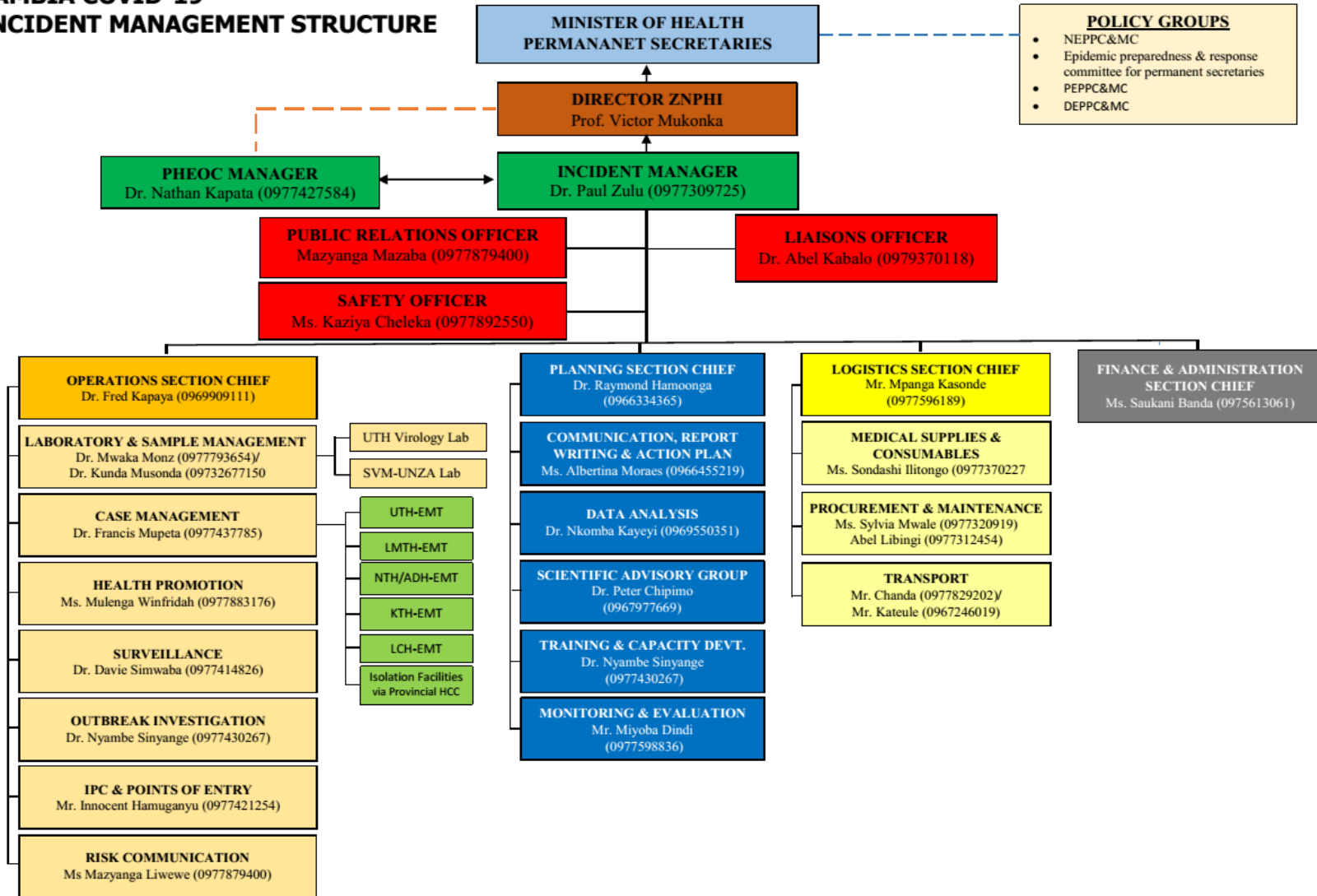
Zambia recorded four additional confirmed cases of COVID-19 bringing the total number to 16. During the IMS meeting, partners were urged to continue to identify sections of the IMS that they can integrate into in order to strengthen the response to the outbreak.

**ANNEX 1: EPIDEMIOLOGICAL DATA AS OF 18:00HRS ON 26<sup>TH</sup> MARCH 2020**

| <b>Total Cases</b>                   |  | <b>Daily Total</b> |             |                |            | <b>Cumulative since outbreak declared</b> |   |
|--------------------------------------|--|--------------------|-------------|----------------|------------|---|---|
| Suspected cases                      |  | <b>0</b>           |             |                |            | <b>72</b>                                 |   |
| Confirmed cases                      |  | <b>4</b>           |             |                |            | <b>16</b>                                 |   |
| <b>Statistics By Health Facility</b> |  | <b>Tubalange</b>   | <b>Levy</b> | <b>Masaiti</b> | <b>UTH</b> | <b>Daily Total</b>                        | <b>Cumulative since outbreak declared</b> |
| <b>Admissions/Discharges</b>         |  |                    |             |                |            |   |   |
| New Admissions                       |  | 0                  | 3           | 1              | 0          | <b>4</b>                                  | <b>34</b>                                 |
| Currently Admitted                   |  | 0                  | 17          | 1              | 0          | <b>18</b>                                 |   |
| Discharges                           |  | 0                  | 0           | 0              | 0          | <b>0</b>                                  | <b>18</b>                                 |
| Transferred in                       |  | 0                  | 0           | 0              | 0          | <b>0</b>                                  | <b>7</b>                                  |
| Transferred out                      |  | 0                  | 0           | 0              | 0          | <b>0</b>                                  | <b>7</b>                                  |
| <b>Deaths</b>                        |  |                    |             |                |            |   |   |
| Deaths among suspected cases         |  | 0                  | 0           | 0              | 0          | <b>0</b>                                  | <b>0</b>                                  |
| Deaths among lab confirmed cases     |  | 0                  | 0           | 0              | 0          | <b>0</b>                                  | <b>0</b>                                  |
| <b>UTH Virology Laboratory</b>       |  |                    |             |                |            |   |   |
| Samples received                     |  | -                  | -           | -              | -          | <b>72</b>                                 | <b>269</b>                                |
| Samples with results processed       |  | -                  | -           | -              | -          | <b>54</b>                                 | <b>197</b>                                |
| COVID-19 positive                    |  | -                  | -           | -              | -          | <b>4</b>                                  | <b>16</b>                                 |
| COVID-19 negative                    |  | -                  | -           | -              | -          | <b>50</b>                                 | <b>181</b>                                |
| Samples with results pending         |  | -                  | -           | -              | -          | <b>72</b>                                 |   |

## ANNEX 2: NATIONAL LEVEL INCIDENT MANAGEMENT SYSTEM FOR THE COVID-19 PREPAREDNESS RESPONSE

### ZAMBIA COVID-19 INCIDENT MANAGEMENT STRUCTURE



## ANNEX 3: CORONAVIRUS DISEASE 2019 (COVID-19) CASE DEFINITIONS

### Case Definitions

#### 1. Suspect case:

A. Patient with acute respiratory infection (fever and at least one sign/symptom of respiratory disease e.g. cough, shortness of breath), AND with no other aetiology that fully explains the clinical presentation AND a history of travel to or residence in a country/area or territory reporting local transmission of COVID-19 during the 14 days prior to symptom onset,

**OR**

B. Patient with any acute respiratory illness AND having been in contact with a confirmed or probable COVID-19 case in the last 14 days prior to symptom onset,

**OR**

C. Patient with severe acute respiratory infection (fever and at least one sign/symptom of respiratory disease e.g. cough, shortness of breath), AND requiring hospitalization AND with no other aetiology that fully explains the clinical presentation

2. Probable case: A suspect case for whom testing for COVID-19 is inconclusive or is tested positive using a pan-coronavirus assay and without laboratory evidence of other respiratory pathogens.

3. Confirmed case: A person with laboratory confirmation of COVID-19 infection, irrespective of clinical signs and symptoms.

4. Person Under Investigation: a suspected case, irrespective of admission status, with either history of travel to an area with local transmission or worked in/attended a health care facility treating COVID-19 infections or admission to a facility for severe pneumonia of unknown aetiology