

SITUATION REPORT NO. 7

Disease Outbreak: COVID-19
Date of report: 25th March, 2020
Country: Zambia

Response start date: 30th January, 2020
Prepared by: MOH/ZNPFI/WHO
Correspondence: ims.covid@znpfi.co.zm

1. CURRENT SITUATION UPDATE

➤ **Country Highlights:** As of 18hrs on 25th March 2020:

- There were **nine (9) new confirmed cases** recorded in the past 24 hours. The total number of confirmed cases is **twelve (12)**. **There have been 0 deaths recorded**
- **Levy Mwanawasa Hospital:** There are currently fourteen (14) patients admitted at Levy Mwanawasa Hospital in Lusaka: 12 confirmed positive; 1 negative; and 1 suspected cases (with results pending); there was one discharge with negative result (Refer to Table 1)

Zambia Current Numbers

♂ **12 Confirmed (9 new)**
♀ **0 Deaths (0 new)**
♂ **0 Recoveries (0 new)**
Global Numbers as of 24/03/20
(Source: WHO)
♂ **372,755 confirmed (39,825 new)**
♀ **16,231 deaths (1,722 new)**
**New: in the last 24hrs*

Number of confirmed COVID-19 cases in Zambia as at 25 March 2020

Legend

Number of cases in province

□ 0

■ 12

• Zambia Cities

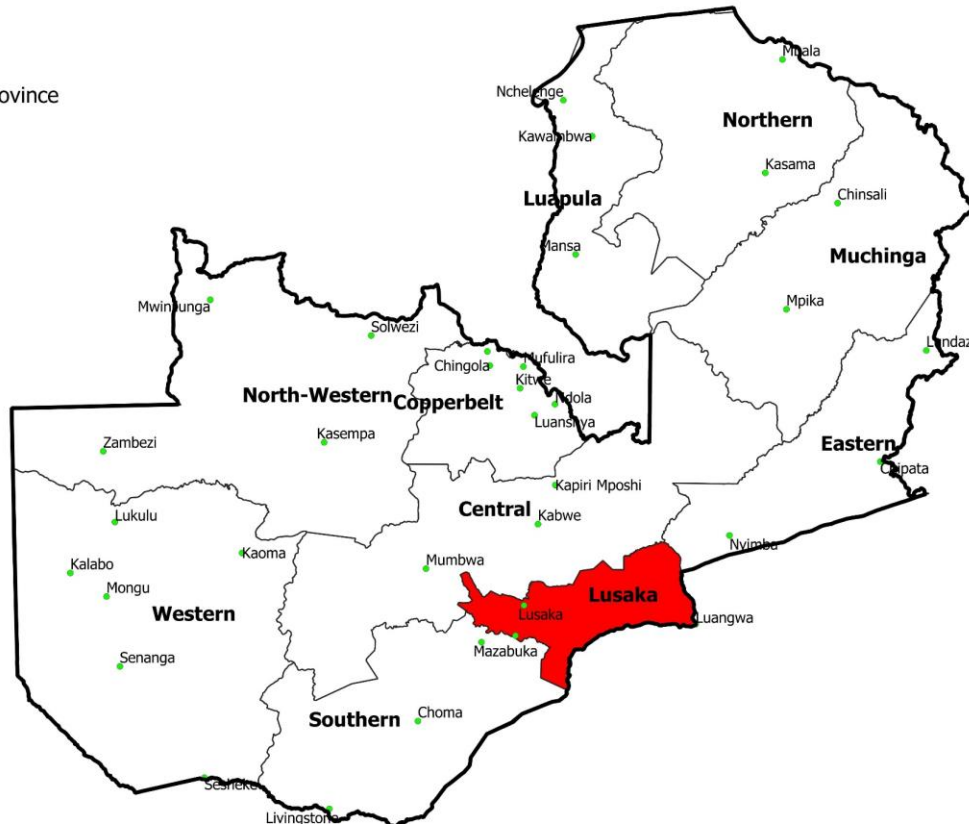


Table 1: COVID-19 Cumulative surveillance and case management report as of 25th March 2020

Parameter	Number
Total Number of Samples Received	197
Total Number of Results Processed	143
Total Number of Confirmed COVID-19 Positive Cases	12
Number of high risk persons under observation	2,796
Number of high risk persons that have completed 14 days observation	603
Number of alerts notified & verified as non-cases	103

2. ACTIONS TO DATE

2.1 CO-ORDINATION

➤ Policy Level:

- Government has put in place measures and interventions including: continued screening of travellers (symptomatic travellers are isolated at a health facility; asymptomatic travellers are required to undergo quarantine and monitoring for at least 14 days); suspension of non-essential travel to countries with confirmed COVID-19 cases; restriction of public gatherings to no more than 50 people; restaurants to operate only on take away and delivery basis; all bars, nightclubs, cinemas, gyms and casinos must close; and all international flights to land and depart from KKIA only. the measures come into effect midnight on Thursday 26th March, 2020.

➤ Technical level

- The IMS continues to meet on Tuesdays and Thursdays. (Refer to Annex 2 for the IMS structure)

2.2 SURVEILLANCE

- **POE, health facility, sentinel site and Event Based Surveillance:** remains heightened country wide. Standard case definitions are being used (Refer to Annex 2). **Contact tracing:** map of case #3 contacts shown below (Figure 1)

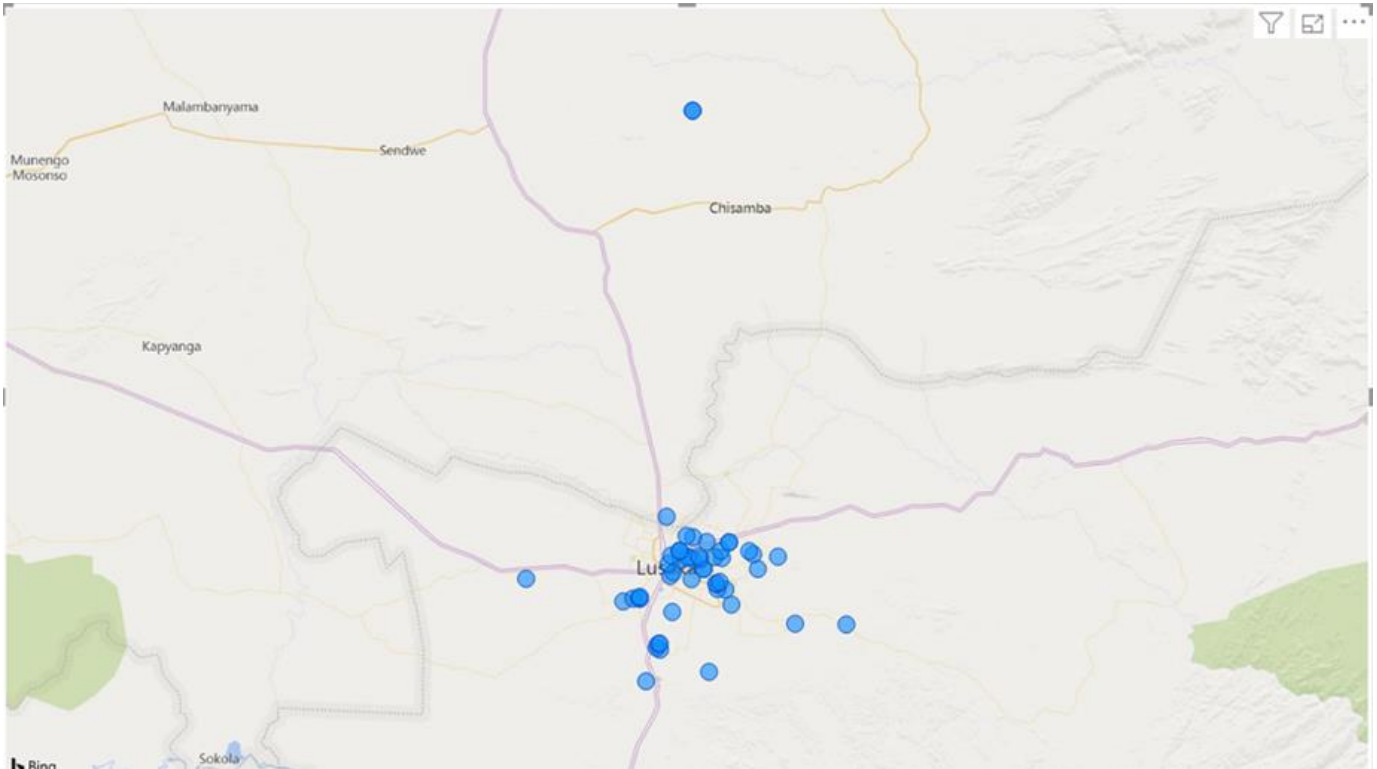


Figure 1: Map of contacts linked to Case 3 as of 24th March 2020

➤ **Laboratory:**

- To date, 12 samples confirmed positive for SARS-Cov-2. Summary of tests conducted to date is available in Table 2 below

➤ **Case Management:** Refer to Table 2 below for summary

- **Levy Mwanawasa Hospital:** Isolation facility and screening structures have been set up
- **Tubalange Hospital:** there are currently no patients admitted at the facility
- **University Teaching Hospital:** Screening structures have been set up here as well. There are currently no patients admitted at the facility

Table 2: Epidemiological Data as of 18:00hrs on 25th March 2020

Total Cases	Daily Total			Cumulative since outbreak declared	
Confirmed cases	9			12	
Statistics By Health Facility	Tubalange	Levy	UTH	Daily Total	Cumulative since outbreak declared
Admissions/Discharges					
New Admissions	0	6	0	6	30
Currently Admitted	0	14	0	14	
Discharges	0	1	0	1	13
Transferred in	0	0	0	0	7
Transferred out	0	0	0	0	7
Deaths					
Deaths among suspected cases	0	0	0	0	0
Deaths among lab confirmed cases	0	0	0	0	0
UTH Virology Laboratory					
Samples received	-	-	-	58	197
Samples with results processed	-	-	-	40	143
COVID-19 positive	-	-	-	9	12
COVID-19 negative	-	-	-	31	131
Samples with results pending	-	-	-	54	

2.2 LOGISTICS

- Supplies (test kits, face masks, protective suits and other medical equipment) donated by the Jack Ma Foundation has been received and is currently being catalogued at Medical Stores Limited
- Buffer stock of PPE delivered to Lusaka, Central, Southern, Copperbelt, Luapula and Eastern Provincial Health Offices
- Distribution to high risk District Health Offices, hospitals and POEs to be completed by Tuesday 31st March 2020

3. GAPS AND CHALLENGES

- **Case Management:** need to establish a channel for patient admission; need to secure food for late patient admissions; expectorants required for patients; additional tests required (e.g. ECG, blood culture, sputum MCS, LFTs and RFTs)
- **Logistics:** logistical supplies pledged by partners yet to be delivered; currently on GRZ procured items are in use.
- **Surveillance:** Non-compliance of quarantine rules by some passengers returning from COVID-19 risk countries; incomplete surveillance documentation and language barrier hampering efforts

4. PRIORITY ACTIONS AND RECOMMENDATIONS

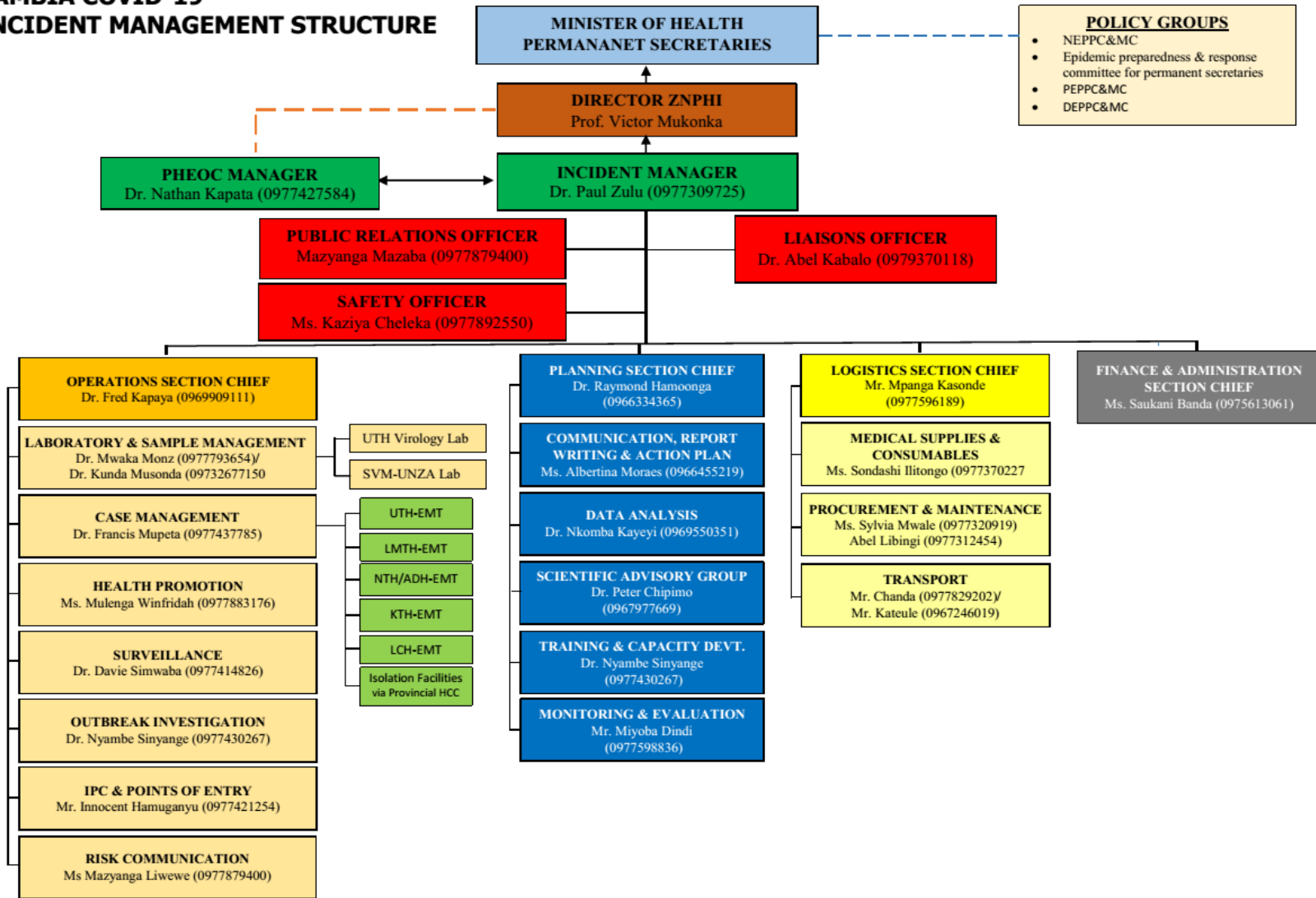
- **Case management:** provide psychosocial counselling patients
- **Logistics:** repositioning of supplies to provinces in readiness for any reported cases outside Lusaka; increase number of assigned vehicles for distribution of PPE and contact tracing; develop a platform to track and communicate logistics needs

5. CONCLUSION

Zambia recorded nine additional confirmed cases of COVID-19 bringing the total number to 12. Local transmission was established among the cases. All effort must be made to trace, test, treat and isolate all COVID-19 cases in order to break the chain of transmission.

ANNEX 1: NATIONAL LEVEL INCIDENT MANAGEMENT SYSTEM FOR THE COVID-19 PREPAREDNESS RESPONSE

ZAMBIA COVID-19 INCIDENT MANAGEMENT STRUCTURE



ANNEX 2: CORONAVIRUS DISEASE 2019 (COVID-19) CASE DEFINITIONS

Case Definitions

1. Suspect case:

A. Patient with acute respiratory infection (fever and at least one sign/symptom of respiratory disease e.g. cough, shortness of breath), AND with no other aetiology that fully explains the clinical presentation AND a history of travel to or residence in a country/area or territory reporting local transmission of COVID-19 during the 14 days prior to symptom onset,

OR

B. Patient with any acute respiratory illness AND having been in contact with a confirmed or probable COVID-19 case in the last 14 days prior to symptom onset,

OR

C. Patient with severe acute respiratory infection (fever and at least one sign/symptom of respiratory disease e.g. cough, shortness of breath), AND requiring hospitalization AND with no other aetiology that fully explains the clinical presentation

2. Probable case: A suspect case for whom testing for COVID-19 is inconclusive or is tested positive using a pan-coronavirus assay and without laboratory evidence of other respiratory pathogens.

3. Confirmed case: A person with laboratory confirmation of COVID-19 infection, irrespective of clinical signs and symptoms.

4. Person Under Investigation: a suspected case, irrespective of admission status, with either history of travel to an area with local transmission or worked in/attended a health care facility treating COVID-19 infections or admission to a facility for severe pneumonia of unknown aetiology